

# User'S Manual

10.1" HD Quad-Core Tablet with Android™ 7.1 Nougat



EGQ235SK

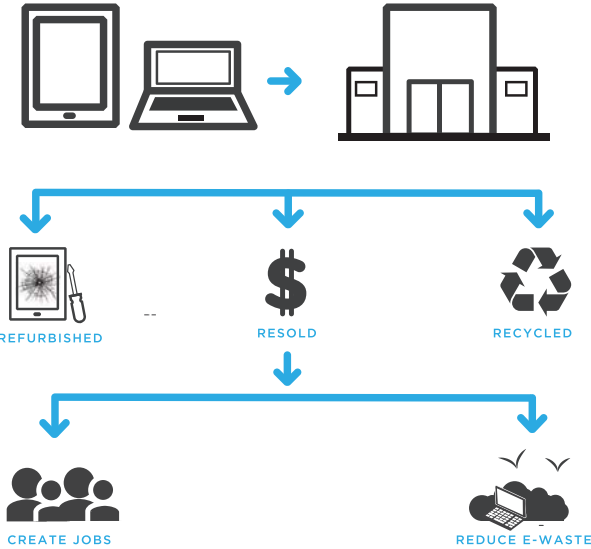
Since the tablet software updates regularly, the user manual may not cover all aspects of new features.

### Important Notices

- The new battery will be in its best condition after being fully charged and discharged 2-3 times.
- While using earphones, if the volume is excessively high it may cause hearing damage. Please adjust the volume to a safe level and moderate use.
- Do not disconnect the tablet suddenly when formatting, uploading, or downloading.
- Do not dismantle the tablet. Do not use alcohol, thinner or benzene to clean its surface.
- Do not use the tablet while driving or walking.
- The tablet is not moisture and water resistant. Please do not use it in a damp environment.
- Do not drop or hit the tablet against a hard surface or the screen may be damaged or cracked.
- Do not upgrade the firmware by yourself. The tablet should be upgraded with the right firmware and right methods offered by us. If an upgrade is needed, please contact us.

### Proper Disposal of this Product

Many states have laws regarding the disposal of computers, televisions and other electronic products, often referred to as "e-waste." The laws vary from state to state, but most prohibit disposal of e-waste as ordinary trash that goes to municipal landfills. If you live in a state with e-waste restrictions, when you discard this product at the end of its useful life, do not dispose of it with your regular trash. Instead, it should be discarded at approved e-waste repositories or collection points, taken to a local Goodwill recycling center for recycling, or it can be mailed to Ematic at 2231 Colby Ave. Los Angeles, California, 90064.

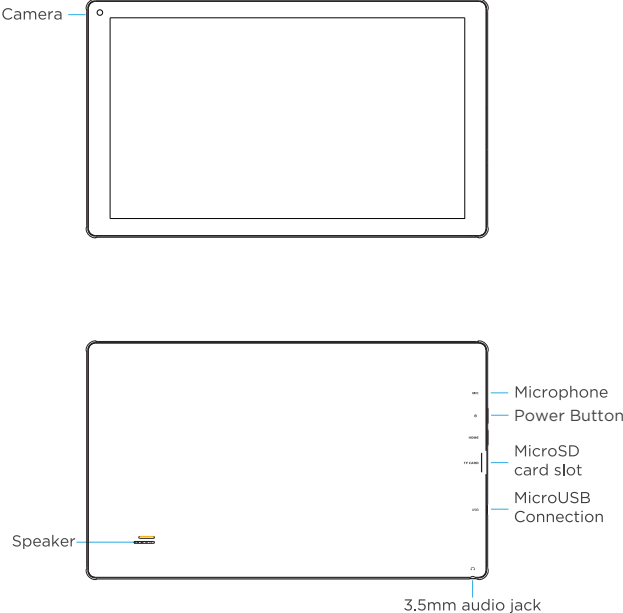


Ematic is not affiliated with Goodwill Industries International, Inc.

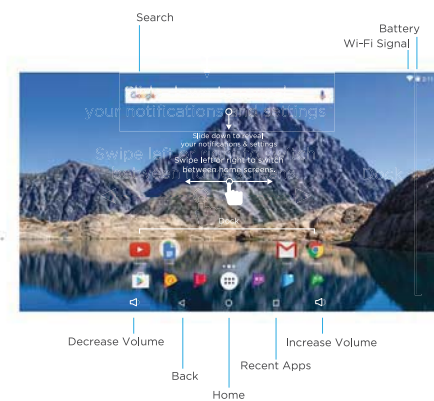
<a href="#">Section 1: Tablet Overview</a>	4
Tablet Overview	4
Screen Basics	5
Touch Screen Basics	5
<a href="#">Section 2: Initial Setup</a>	6
Charging	6
Turn on	6
Setting up your Google™ Account	7
Getting Started	7
<a href="#">Section 3: Your Home Screen</a>	8
Icons	8
Adding Icons	9
Moving Icons	9
Removing Icons	9
Take a Screenshot	9
Sleep Mode	10
Notifications	10
Manage Notifications & Interruptions	11
Change the Wallpaper	11
<a href="#">Section 4: Network Connection</a>	12
Turn On/Off Wi-Fi	12
Adding a Wi-Fi Network	13
Forget a Wi-Fi Network	13
<a href="#">Section 5: Connecting to a Computer</a>	14
PC	14
Mac	15
<a href="#">Section 6: Using the Keyboard</a>	16
Entering Text	16
Gesture Typing	17
Basic Editing	18
Keyboard settings	18
<a href="#">Section 7: Exploring Apps</a>	19
Clock	19
Camera	19
Included Apps	20
Uninstalling Apps	22
<a href="#">Section 8: Google Accounts</a>	23
Why use a Google Account?	23
Add a Google Account	24
Remove a Google Account	24

Google Play™	25
Google Play recommendations	26
Google Play Store app	26
<a href="#">Section 9: Google Now</a>	27
Google Now Cards	27
Location Access	27
Google Now Settings	29
<a href="#">Section 10: Voice Actions</a>	30
Voice Commands	31
<a href="#">Section 11: Tablet Settings</a>	32
<a href="#">Section 12: Tips &amp; Tricks</a>	32
Extending Battery Life	33
Reset/Restore	33
Troubleshooting	34
Technical Specifications	34
Customer Support	35
Limitations of Liability Statement	35

# 1. Tablet Overview



## Screen Basics



## Touch Screen Basics

Tap the screen once to activate or open something.



Touch and hold to move an item by dragging.

\*In many apps touch and hold can offer more options.



Zooming: Double tap quickly to zoom into a webpage, picture, or map. Some apps allow you to zoom in and out by touching the screen with two fingers, and pinching them together.



TIP: You can flick the screen with your finger to quickly scroll through a long list, such as a library of music.

Tap a specific location on the screen where you would like to enter text. The on-screen keyboard will pop up.

## 2. Initial Setup

### Charging

Fully charge your tablet for 6 hours before the first use.



Use the included USB wall charger.



The battery indicator will show that your device is charging.



**Attention:** Charging by connecting to a computer will be extremely slow. We recommend only using the included wall charger.

### Turn on

To start your tablet, press and hold the power key for 2 seconds. The Ematic logo indicates that the tablet is loading.

Once the screen loads, choose your language and connect to your Wi-Fi network. You will then be prompted to sign in to your Google Account.



## Setting up your Google Account


Sign in using the email address and password from your Google Account. If you don't have one yet, create one.

An email address that you use for any of the following counts as a Google Account:

- Gmail™
- YouTube™
- Google Apps™
- AdWords™
- Any other Google product

When you sign in with a Google Account, all your email, contacts, Calendar events, and other data associated with that account are automatically synced with your tablet. You can also add multiple Google Accounts later.

## Getting Started

Once your tablet loads, you will see a Welcome Screen. Tap OK to begin using your tablet. Tap  to customize your Home Screen with apps and widgets.



### 3. Your Home Screen

#### Icons

You can fill the home screen with any combinations of shortcuts, widgets, and folders you like.

When you power up your tablet for the first time, you'll see the main home screen panel. This panel is typically centered; you can access additional panels on either side of the main one by swiping your finger left or right.



**Battery Level:** The white battery level indicator will decrease and change to red as the battery is drained.



**Wi-Fi Signal:** As the Wi-Fi signal strength decreases, the blue bands will change to grey.



**All Apps:** Tap to view all apps.



**Back:** Go back to the previous screen.



**Recent apps:** Open a list of recent apps. Tap an app to open or swipe left/right to remove the thumbnail.



**Home:** Go back to the home screen. Hold and slide up to open Google Now.

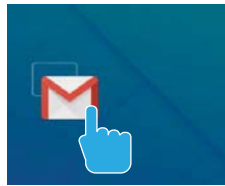


**Increase Volume**



**Decrease Volume**

## Adding Icons



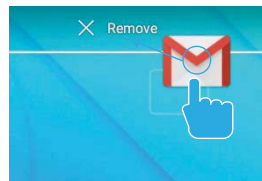
Within the All Apps menu, choose an app or swipe right to choose a widget. Tap and hold desired app or widget for about 2 seconds until the Home screen appears. Slide it wherever you want and let go.

## Moving Icons

Touch & hold the icon.  
Slide your finger to the new position.  
(To move between Home screens, slide toward the edge of the screen. To bump another icon out of the way, slide slowly towards it.)  
Lift your finger to drop the icon into its new position.

## Removing Icons

Touch and hold the app or widget and drag to the X icon at the top of the screen.



## Take a Screenshot

Make sure the image you want is displayed on the screen. Press the Screenshot icon on the status bar to take a screenshot.

You can also display or hide the screenshot button on the status bar in the settings menu.



The screenshot is automatically saved to the screenshots folder.

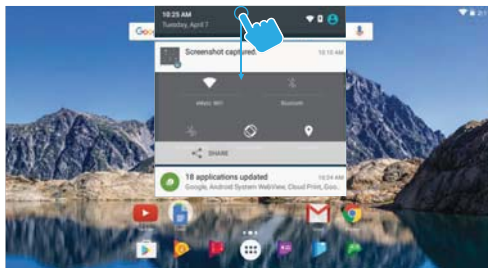
## Sleep Mode

To save battery, you should put your tablet in sleep mode by turning off the LCD display. To do this, press the power key and immediately release it. Do it again to bring up the lock screen.

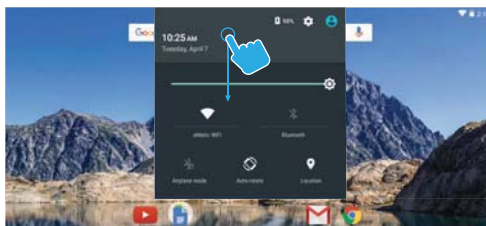


## Quick Settings & Notifications

Swipe down from the top of your Home Screen to view your Notifications.



Use two fingers to swipe from the top of your Home Screen or swipe down again from notifications to view your Quick Settings.

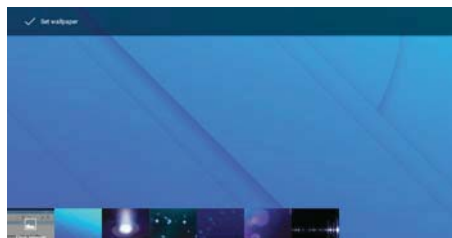


### Manage Notifications and Interruptions

Tap on Sound & notification in the Settings Menu. You can manage what notifications you see, set notification priority level by app, and see what apps have access to your notifications. You can set up your device so that notifications only appear on at certain times, for certain types of notifications, and from specific contacts.

### Change the Wallpaper

Tap and hold your finger on any open space on your home screen. A Wallpaper icon will appear.



Wallpapers: Choose from thumbnails of default images  
Pick an image: Choose a wallpaper from your personal-recent photos, screen shots or files on your drive.  
Live Wallpapers: Choose from a scrolling list of animated wallpapers.

To set your wall paper tap the "Set Wallpaper" icon at the top of the screen.

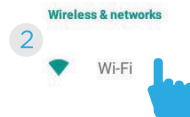
## 4. Network Connection

Wi-Fi can only be used when it connects with a Wi-Fi Access Point (AP) or a free unsecured Wi-Fi hotspot.

### Turn on Wi-Fi

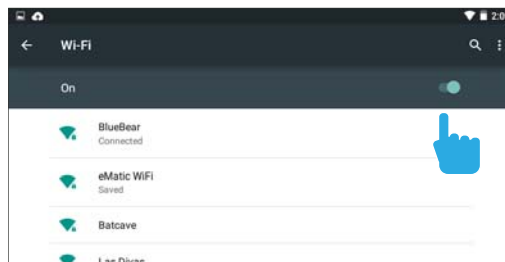



Within the All Apps menu, tap Settings.



Under Wireless & Networks, tap on Wi-Fi.

Your tablet will list the networks it finds within range. Switch the button at the top to on and scan for networks. Tap a network to connect.



When connected, the wireless indicator appears in the status bar. The white lines indicate connection strength. 

### Turn off Wi-Fi

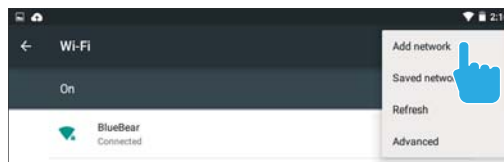
Tap the Wi-Fi ON switch under Wireless & Networks. Turn off Wi-Fi when you're not using it to extend the life of your battery between charges.

## Adding a Wi-Fi Network

Users may also add a Wi-Fi network by pressing the Menu icon in the top right corner.



Select Add network.



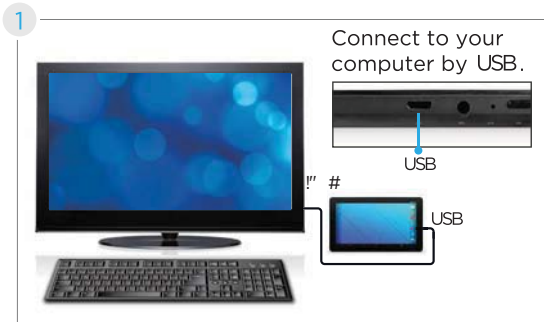
Add the network information to connect.



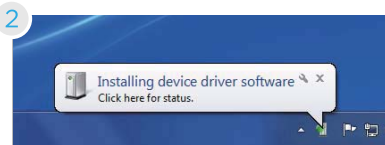
## Forget a Wi-Fi Network

In the Wi-Fi settings screen, tap the name of the network. Tap "Forget" in the dialog that opens.

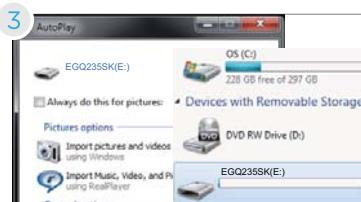
## 5. Connecting to a Computer



### PC



The device driver will install.



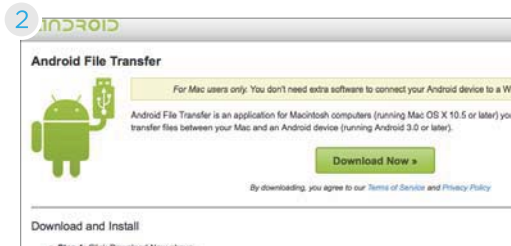
Choose open folder to view files or select the removable disk.



You will now be able to drag and drop the files from your computer onto your tablet just as you would with a USB flash drive.

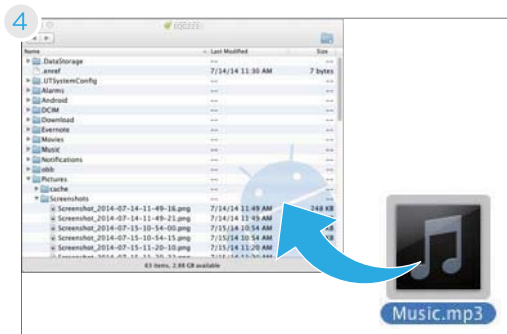


## Mac



First, install the Android File Transfer application for Mac. Go to [android.com/filetransfer](http://android.com/filetransfer) on your Mac and choose download now.

3 Install the application.



The Android File Transfer application will launch automatically when you connect your tablet. Drag & drop files to transfer.

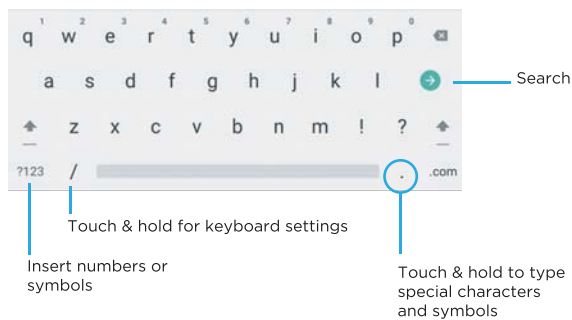
## 6. Using the Keyboard

### Entering text

Enter text using the onscreen keyboard. In most apps it will open automatically. In others, open the keyboard by touching where you want to type.

\*Depending on what you are doing, some of the keys on the keyboard may look different. Keyboard A&B appears when you are searching or browsing the net. Keyboard C appears when you are writing emails, documents, or messaging.

Keyboard A:




Keyboard B:



Keyboard C:



To make the keyboard go away, touch the modified Back button  at the bottom of the screen.

### Gesture Typing

Swipe your finger over letters you want to type, and lift after each word. The keyboard will anticipate and predict the next word in your sentence.

