

# #01\_WLAN2.4GHz\_802.11b 1Mbps\_Edge 1\_0mm\_Ch1;Ant 1

Communication System: 802.11b ; Frequency: 2412 MHz;Duty Cycle: 1:1

Medium: MSL\_2450\_181229 Medium parameters used:  $f = 2412$  MHz;  $\sigma = 1.922$  S/m;  $\epsilon_r = 51.725$ ;  $\rho = 1000$  kg/m<sup>3</sup>

Ambient Temperature : 23.5 °C ; Liquid Temperature : 22.5 °C

## DASY5 Configuration:

- Probe: ES3DV3 - SN3270; ConvF(4.36, 4.36, 4.36); Calibrated: 2018/9/24;
- Sensor-Surface: 3mm (Mechanical Surface Detection)
- Electronics: DAE4 Sn854; Calibrated: 2018/6/14
- Phantom: ELI v5.0; Type: QDOVA002AA; Serial: TP:1227
- Measurement SW: DASY52, Version 52.10 (0);SEMCAD X Version 14.6.10 (7417)

**Area Scan (61x101x1):** Interpolated grid: dx=1.200 mm, dy=1.200 mm

Maximum value of SAR (interpolated) = 0.472 W/kg

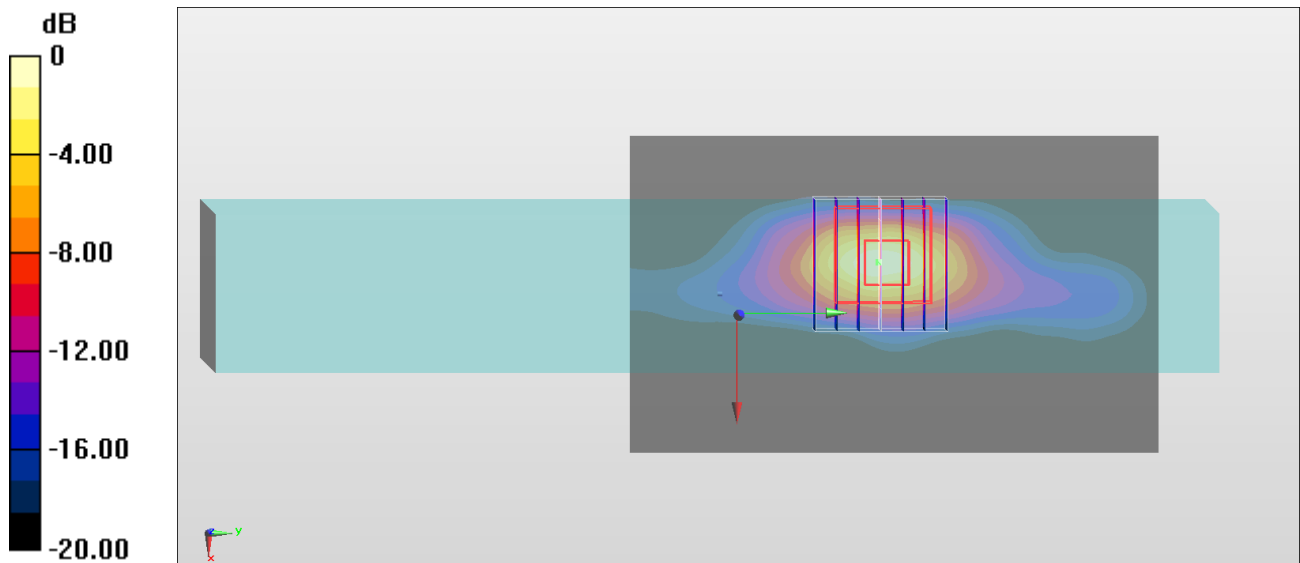
**Zoom Scan (7x7x7)/Cube 0:** Measurement grid: dx=5mm, dy=5mm, dz=5mm

Reference Value = 6.540 V/m; Power Drift = -0.18 dB

Peak SAR (extrapolated) = 1.16 W/kg

**SAR(1 g) = 0.370 W/kg; SAR(10 g) = 0.117 W/kg**

Maximum value of SAR (measured) = 0.567 W/kg



0 dB = 0.472 W/kg = -3.26 dBW/kg

**#02\_WLAN5GHz\_802.11a 6Mbps\_Edge 1\_0mm\_Ch64;Ant 1**

Communication System: 802.11a ; Frequency: 5320 MHz;Duty Cycle: 1:1

Medium: MSL\_5G\_181231 Medium parameters used:  $f = 5320$  MHz;  $\sigma = 5.504$  S/m;  $\epsilon_r = 48.961$ ;  $\rho = 1000$  kg/m<sup>3</sup>

Ambient Temperature : 23.3 °C ; Liquid Temperature : 22.3 °C

DASY5 Configuration:

- Probe: EX3DV4 - SN7306;ConvF(4.8, 4.8, 4.8) ;Calibrated: 2018/7/26
- Sensor-Surface: 1.4mm (Mechanical Surface Detection)
- Electronics: DAE3 Sn577; Calibrated: 2018/9/19
- Phantom: ELI v5.0; Type: QDOVA002AA; Serial: TP:1238
- Measurement SW: DASY52, Version 52.10 (1);SEMCAD X Version 14.6.11 (7439)

**Area Scan (71x121x1):** Interpolated grid: dx=1.000 mm, dy=1.000 mm

Maximum value of SAR (interpolated) = 1.27 W/kg

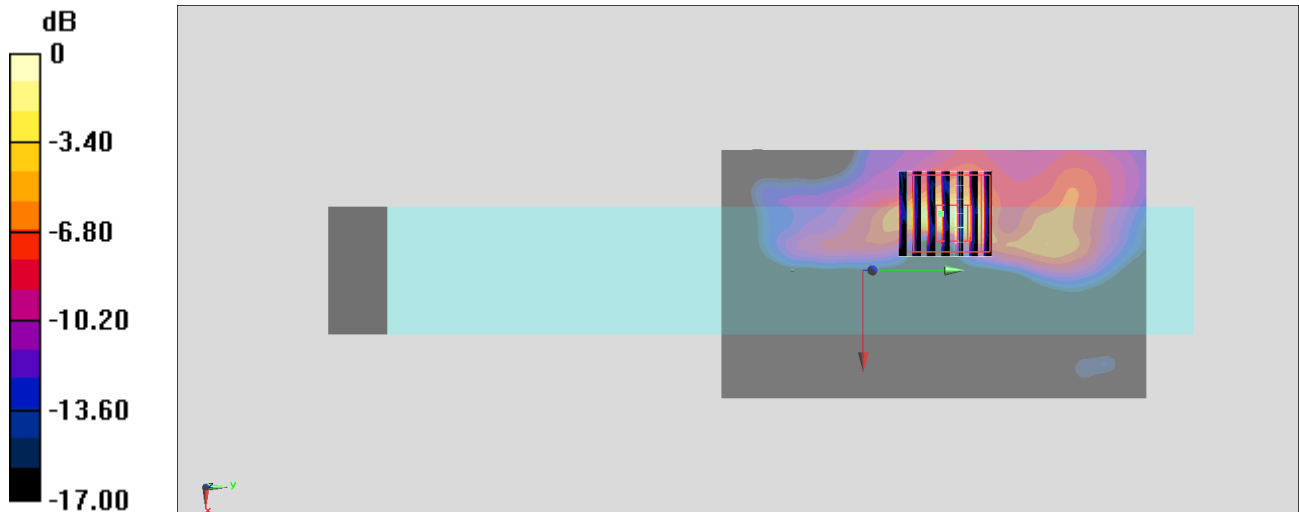
**Zoom Scan (7x7x7)/Cube 0:** Measurement grid: dx=4mm, dy=4mm, dz=1.4mm

Reference Value = 8.942 V/m; Power Drift = 0.05 dB

Peak SAR (extrapolated) = 2.45 W/kg

**SAR(1 g) = 0.477 W/kg; SAR(10 g) = 0.142 W/kg**

Maximum value of SAR (measured) = 1.44 W/kg



0 dB = 1.44 W/kg = 1.58 dBW/kg

**#03\_WLAN5GHz\_802.11a 6Mbps\_Edge 1\_0mm\_Ch100;Ant 1**

Communication System: 802.11a ; Frequency: 5500 MHz;Duty Cycle: 1:1

Medium: MSL\_5G\_181231 Medium parameters used:  $f = 5500$  MHz;  $\sigma = 5.703$  S/m;  $\epsilon_r = 48.712$ ;  $\rho = 1000$  kg/m<sup>3</sup>

Ambient Temperature : 23.3 °C ; Liquid Temperature : 22.3 °C

DASY5 Configuration:

- Probe: EX3DV4 - SN7306;ConvF(4.03, 4.03, 4.03) ;Calibrated: 2018/7/26
- Sensor-Surface: 1.4mm (Mechanical Surface Detection)
- Electronics: DAE3 Sn577; Calibrated: 2018/9/19
- Phantom: ELI v5.0; Type: QDOVA002AA; Serial: TP:1238
- Measurement SW: DASY52, Version 52.10 (1);SEMCAD X Version 14.6.11 (7439)

**Area Scan (81x121x1):** Interpolated grid: dx=1.000 mm, dy=1.000 mm

Maximum value of SAR (interpolated) = 0.444 W/kg

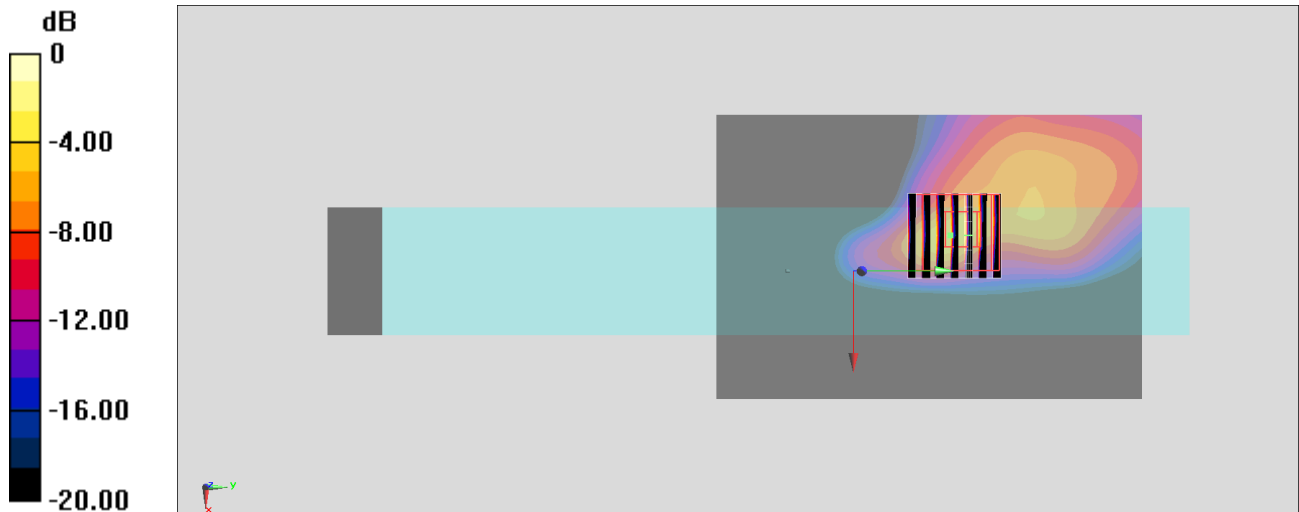
**Zoom Scan (7x7x7)/Cube 0:** Measurement grid: dx=4mm, dy=4mm, dz=1.4mm

Reference Value = 3.600 V/m; Power Drift = 0.02 dB

Peak SAR (extrapolated) = 1.91 W/kg

**SAR(1 g) = 0.412 W/kg; SAR(10 g) = 0.105 W/kg**

Maximum value of SAR (measured) = 1.10 W/kg



0 dB = 1.10 W/kg = 0.41 dBW/kg

**#04\_WLAN5GHz\_802.11a 6Mbps\_Edge 1\_0mm\_Ch149;Ant 1**

Communication System: 802.11a ; Frequency: 5745 MHz;Duty Cycle: 1:1

Medium: MSL\_5G\_181231 Medium parameters used :  $f = 5745$  MHz;  $\sigma = 5.967$  S/m;  $\epsilon_r = 48.376$ ;  $\rho = 1000$  kg/m<sup>3</sup>

Ambient Temperature : 23.3 °C ; Liquid Temperature : 22.3 °C

DASY5 Configuration:

- Probe: EX3DV4 - SN7306;ConvF(4.37, 4.37, 4.37) ;Calibrated: 2018/7/26
- Sensor-Surface: 1.4mm (Mechanical Surface Detection)
- Electronics: DAE3 Sn577; Calibrated: 2018/9/19
- Phantom: ELI v5.0; Type: QDOVA002AA; Serial: TP:1238
- Measurement SW: DASY52, Version 52.10 (1);SEMCAD X Version 14.6.11 (7439)

**Area Scan (81x121x1):** Interpolated grid: dx=1.000 mm, dy=1.000 mm

Maximum value of SAR (interpolated) = 1.18 W/kg

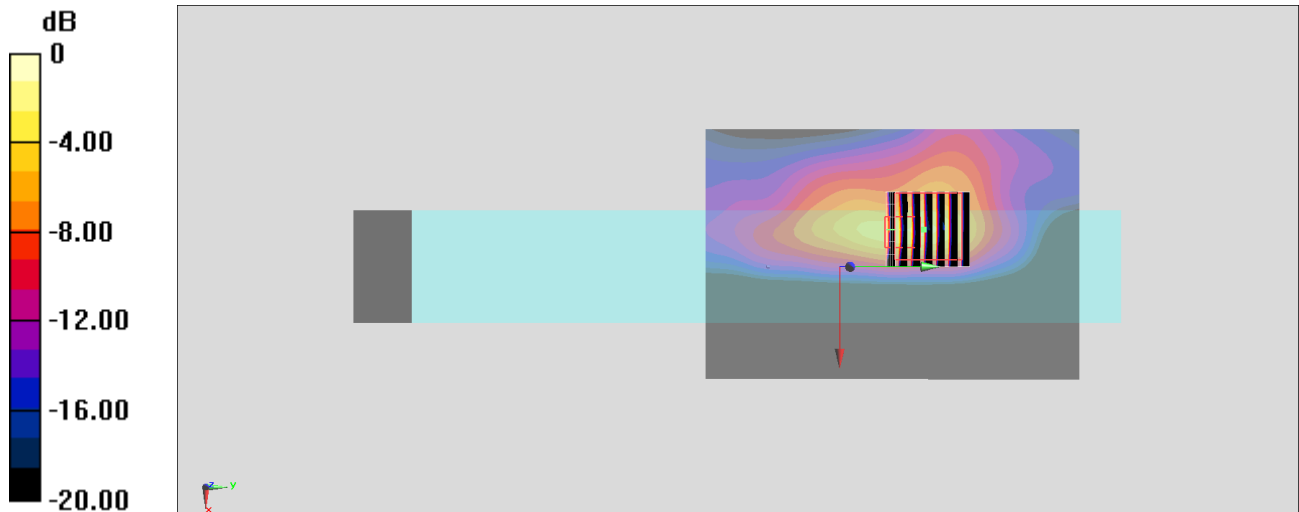
**Zoom Scan (7x7x7)/Cube 0:** Measurement grid: dx=4mm, dy=4mm, dz=1.4mm

Reference Value = 8.841 V/m; Power Drift = 0.05 dB

Peak SAR (extrapolated) = 2.34 W/kg

**SAR(1 g) = 0.473 W/kg; SAR(10 g) = 0.139 W/kg**

Maximum value of SAR (measured) = 1.38 W/kg



0 dB = 1.38 W/kg = 1.40 dBW/kg