

USER MANUAL

VERSION V0.9 MAY 2010

Terminal Hardware System



Copyright 2010 May
All Rights Reserved
Manual Version 0.9
Part Number:

The information contained in this document is subject to change without notice. We make no warranty of any kind with regard to this material, including, but not limited to, the implied warranties of merchantability and fitness for a particular purpose. We shall not be liable for errors contained herein or for incidental or consequential damages in connection with the furnishing, performance, or use of this material.

This document contains proprietary information that is protected by copyright. All rights are reserved. No part of this document may be photocopied, reproduced or translated to another language without the prior written consent of the manufacturer.

TRADEMARK

Intel® and Core™ Duo are registered trademarks of Intel® Corporation. Microsoft® and Windows® are registered trademarks of Microsoft Corporation. Other trademarks mentioned herein are the property of their respective owners.

Safety

IMPORTANT SAFETY INSTRUCTIONS

1. To disconnect the machine from the electrical power supply, turn off the power switch and remove the power cord plug from the wall socket. The wall socket must be easily accessible and in close proximity to the machine.
2. Read these instructions carefully. Save these instructions for future reference.
3. Follow all warnings and instructions marked on the product.
4. Do not use this product near water.
5. Do not place this product on an unstable cart, stand, or table. The product may fall, causing serious damage to the product.
6. Slots and openings in the cabinet and the back or bottom are provided for ventilation to ensure reliable operation of the product and to protect it from overheating. These openings must not be blocked or covered. The openings should never be blocked by placing the product on a bed, sofa, rug, or other similar surface. This product should never be placed near or over a radiator or heat register or in a built-in installation unless proper ventilation is provided.
7. This product should be operated from the type of power indicated on the marking label. If you are not sure of the type of power available, consult your dealer or local power company.
8. Do not allow anything to rest on the power cord. Do not locate this product where persons will walk on the cord.
9. Never push objects of any kind into this product through cabinet slots as they may touch dangerous voltage points or short out parts that could result in a fire or electric shock. Never spill liquid of any kind on the product.



This device complies with the requirements of the EEC directive 2004/108/EC with regard to “Electromagnetic compatibility” and 2006/95/EC “Low Voltage Directive”.



This device complies with part 15 of the FCC rules. Operation is subject to the following two conditions:

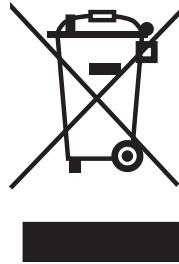
- (1) This device may not cause harmful interference.
- (2) This device must accept any interference received, including interference that may cause undesired operation.

CAUTION ON LITHIUM BATTERIES

There is a danger of explosion if the battery is replaced incorrectly. Replace only with the same or equivalent type recommended by the manufacturer. Discard used batteries according to the manufacturer's instructions.

LEGISLATION AND WEEE SYMBOL

2002/96/EC Waste Electrical and Electronic Equipment Directive on the treatment, collection, recycling and disposal of electric and electronic devices and their components.



The crossed dust bin symbol on the device means that it should not be disposed of with other household wastes at the end of its working life. Instead, the device should be taken to the waste collection centers for activation of the treatment, collection, recycling and disposal procedure.

To prevent possible harm to the environment or human health from uncontrolled waste disposal, please separate this from other types of wastes and recycle it responsibly to promote the sustainable reuse of material resources.

Household users should contact either the retailer where they purchased this product, or their local government office, for details of where and how they can take this item for environmentally safe recycling.

Business users should contact their supplier and check the terms and conditions of the purchase contract.

This product should not be mixed with other commercial wastes for disposal.

Revision History

Changes to the original user manual are listed below:

Revision	Description	Date
0.9	• Initial release	2010 May

Table of Contents


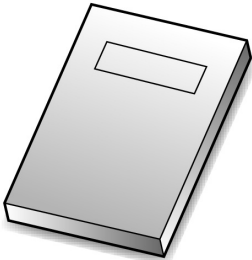
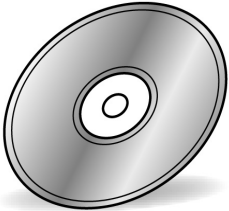
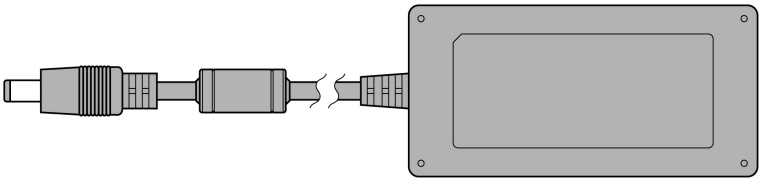
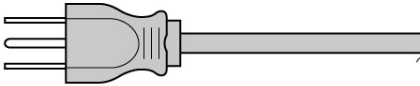
1. Item Check List	1
1-1. Standard Items	1
2. System View	2
2-1. Front View	2
2-2. Rear View	2
2-3. I/O Ports View.....	3
3. Driver Installation	4
3-1. Driver List	4
3-2. Chipset Driver Installation.....	5
3-3. VGA Driver Installation	6
3-4. Audio Driver Installation.....	8
3-5. LAN Driver Installation.....	9
3-6. POSTouch Driver Installation.....	11
4. Peripheral Installation	15
4-1. Phone Set Installation.....	15
4-2. Stand Installation	16
5. Specification	17

6. Jumper Setting.....	19
6-1. For B68 Motherboard	19
6-1-1. Motherboard Layout	19
6-1-2. Connectors & Functions	20
6-1-3. Jumper Setting	21

1. Item Check List

1-1. Standard Items

Take the system unit out of the carton. Remove the unit from the carton by holding it by the foam inserts. The following contents will be found:

	
● System	
	
● Manual	● Driver CD
	
● Power Adapter	
	
● Power Cable	

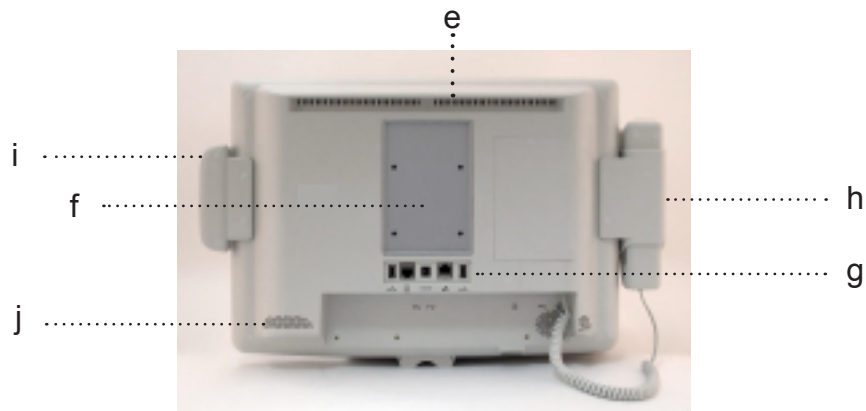
2. System View

2-1. Front View



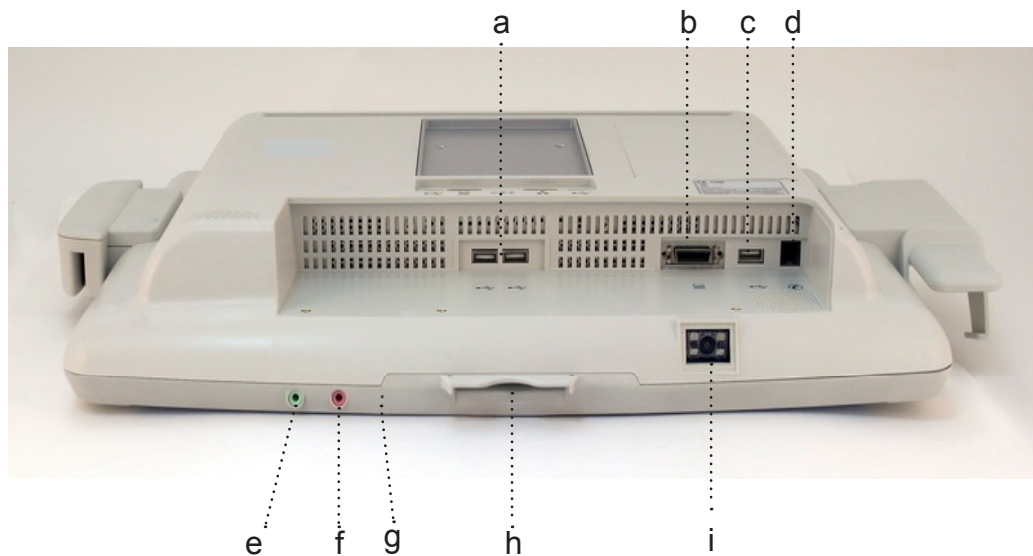
Item	Description
a	Camera
b	TV Key Pad (Power, Volume and Channel button)
c	* MSR Slot
d	* Handset

2-2. Rear View



Item	Description
e	Ventilation
f	VESA Holes
g	Rear I/O (USBx2, DC-IN, RJ48, LAN Connector)
h	* Handset cradle
i	* MSR Slot
j	Speaker

2-3. I/O Ports View



Item	Description
a	USB x2
b	SCSI Coonector
c	USB x 1
d	Phone Jack (RJ11)
e	Audio Line-out
f	Audio MIC-in
g	Built-in MIC
h	Smart Card Reader Slot
i	* 2D Scanner

Items with * asterisk mark can be added on when requested.

Note: External equipment intended for connection to singnal input / output or other connectors, shall comply with relevant UL standards (e.g. UL 60950-1 for IT equipment and UL 60601-1 / IEC 60601-1 series for medical electrical equipment).)

3. Driver Installation

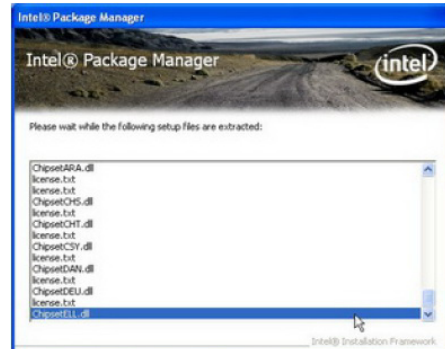
3-1. Driver List

B98 v1.1 Driver List

Item Description	Number
Chipset Driver	3-2
VGA Drivers	3-3
Audio Drivers	3-4
LAN Drivers	3-5
POS Touch Drivers	3-6

3-2. Chipset Driver Installation

Function	OS
Chipset	Windows
	Windows, Mac



a. Click “Chipset” in the Driver List menu of K938S B98. After entering chipset menu, double click to run <infinst911_autol.exe>.

b. File are extracting.



c. Click the <Next> button on the Welcome window.



d. Click <Yes> button to accept the License Agreement.



e. Click <Next> button.



f. Click <Finish> button to complete the Setup.

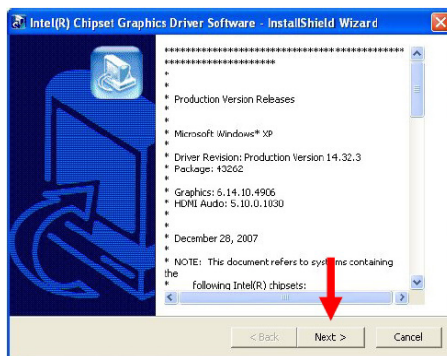
3-3. VGA Driver Installation

The VGA drivers can be found in the attached driver CD. In this case "Win2K, XP" is used as an example. The procedure might slightly differ depending on the OS installed.

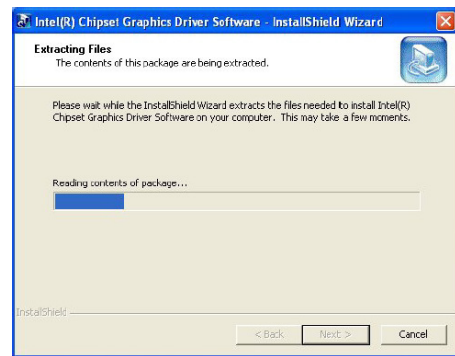


a. Click <Win2K, XP> of "VGA" section in the Driver List menu.

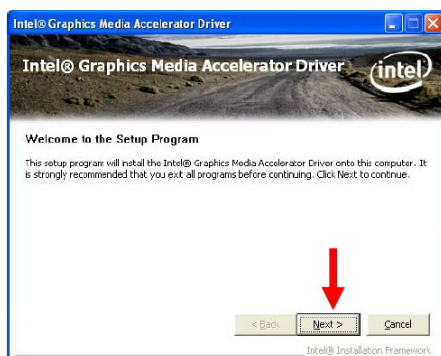
b. Double click <win2k_xp14323> to run.



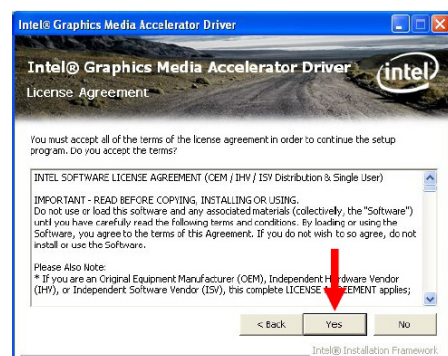
c. Click <Next> button to run the InstallShield Wizard.



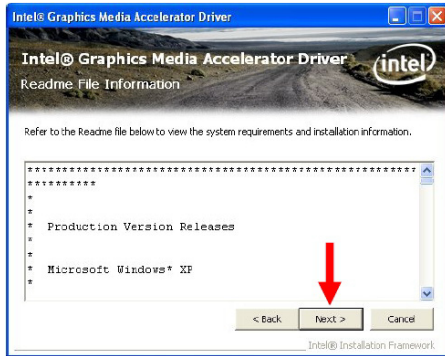
d. Files are extracting.



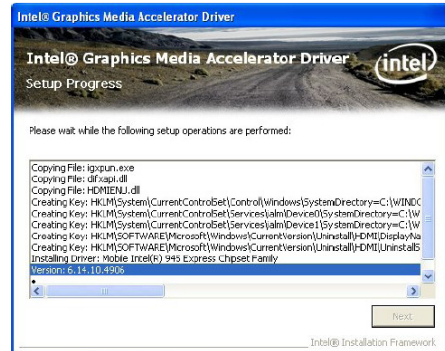
e. Click <Next> button to the Setup menu.



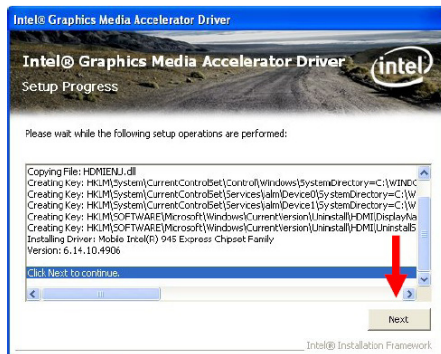
f. Click <Yes> button to accept the License Agreement.



g. Click <Next>.



h. Setup program is running.



i. Click <Next> to continue.

3-4. Audio Driver Installation

The Audio drivers can be found in the attached driver CD. In this case "Win2K, XP" is used as an example. The procedure might slightly differ depending on the OS installed.

Audio	Win2K_XP_2003
• Realtek HD Codec	Vista_Win7
	Linux

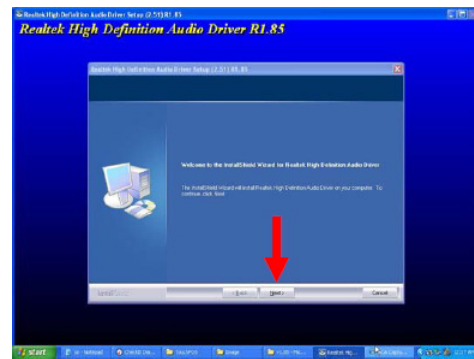


a. Click <Win2K, XP, 2003> of "Audio" section in the Driver List menu.

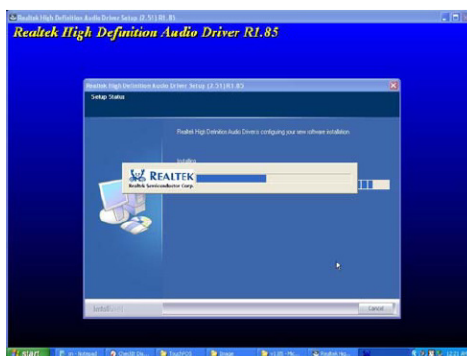
b. Double click <WDM_R185.exe> to run the InstallShield Wizard.



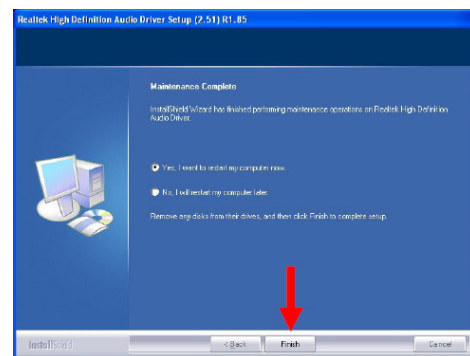
c. Files are extracting.



d. Click <Next> to start the InstallShield Wizard Setup Program.



e. Setup program is running.



f. Select <Yes, I want to restart this computer now>, then click <Finish>.

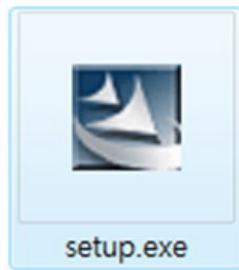
3-5. LAN Driver Installation

PCI-E 1000Mb LAN	DOS
	Win9X, ME, 2K, XP
• Realtek RTL8111	Vista
	Linux

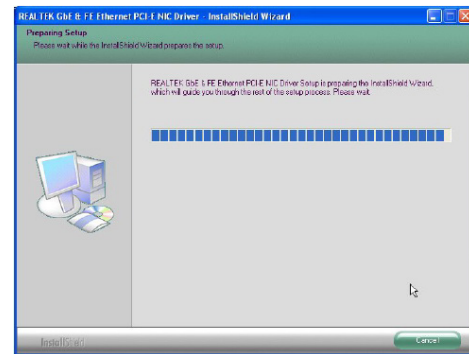


a. Click <Win9X, ME, 2K, XP> of “PCI-E LAN” section in the Driver List menu.

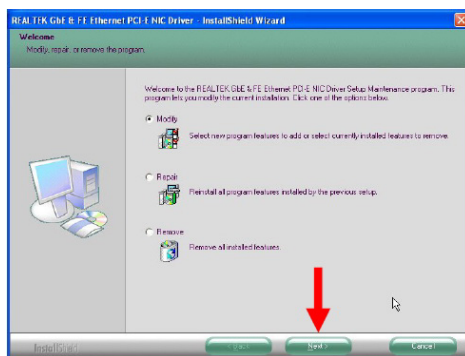
b. Double-click <v686>.



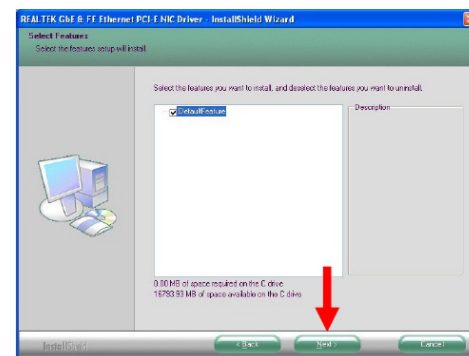
c. Double-click <setup.exe> to start installation.



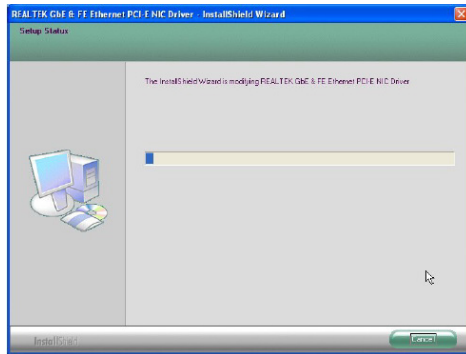
d. InstallShield Wizard is preparing the setup.



e. Select an options from <Modify>, <Repair>, or <Remove> and click <Next>.



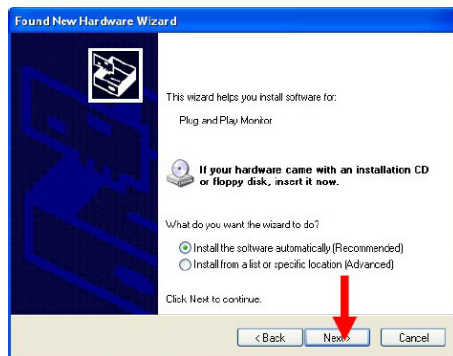
f. Click <Next>.



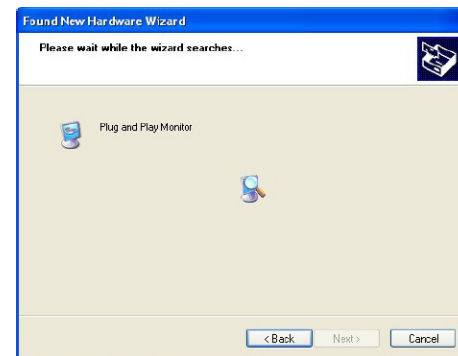
g. The Setup is running.



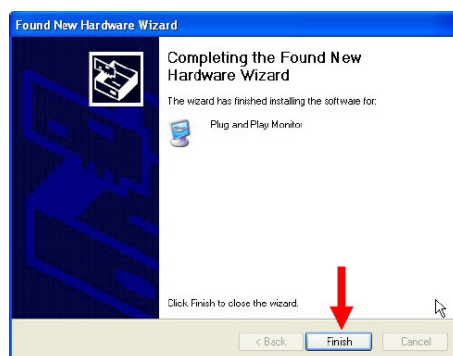
h. Select an option in the Hardware Wizard dialog and click <Next>.



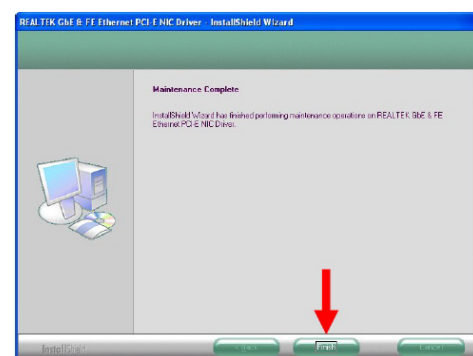
i. Select <Install the software automatically (Recommended)> and click <Next>.



j. <Found New Hardware Wizard> is running.



k. Click <Finish> to complete the <Found New Hardware Wizard>.



l. Click <Finish>.