

WiFi 2.4GHz_Rear_802.11 b_Ch 1_0mm_Chain B

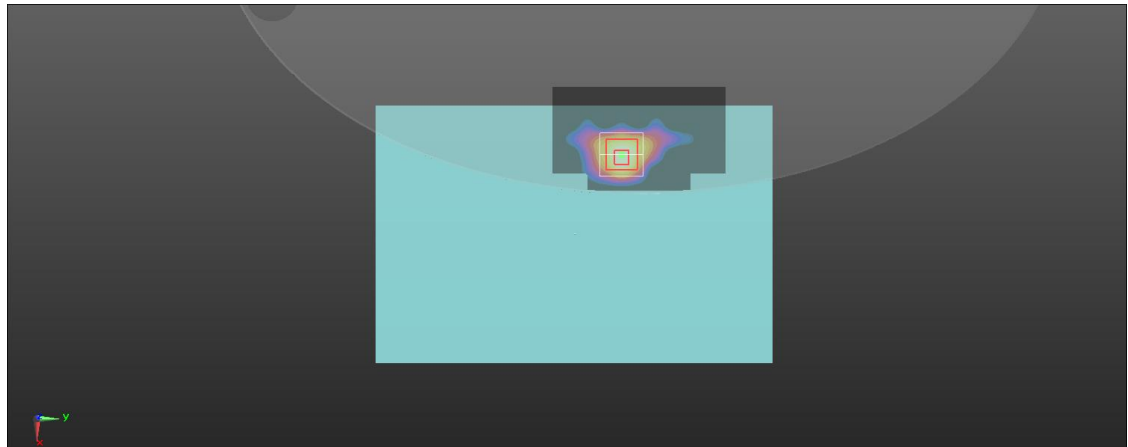
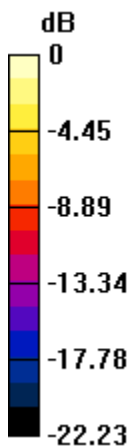
Frequency: 2412 MHz; Duty Cycle: 1:1; Room Ambient Temperature: 22.8°C; Liquid Temperature: 22.4°C
Medium parameters used : $f = 2412 \text{ MHz}$; $\sigma = 1.839 \text{ S/m}$; $\epsilon_r = 38.455$; $\rho = 1000 \text{ kg/m}^3$

DASY5 Configuration:

- Area Scan Setting: Find Secondary Maximum Within: 2.0 dB and with a peak SAR value greater than 0.0012W/kg
- Electronics: DAE4 Sn1260; Calibrated: 2021/9/20
- Probe: EX3DV4 - SN7642; ConvF(8.12, 8.12, 8.12) @ 2412 MHz; Calibrated: 2022/3/2
- Sensor-Surface: 2mm (Mechanical Surface Detection)
- Phantom: ELI

Rear/802.11b/Area Scan (61x101x1): Interpolated grid: $dx=1.200 \text{ mm}$, $dy=1.200 \text{ mm}$
Maximum value of SAR (interpolated) = 0.998 W/kg

Rear/802.11b/Zoom Scan (7x7x7)/Cube 0: Measurement grid: $dx=5\text{mm}$, $dy=5\text{mm}$, $dz=5\text{mm}$
Reference Value = 22.28 V/m; Power Drift = -0.13 dB
Peak SAR (extrapolated) = 1.46 W/kg
SAR(1 g) = 0.621 W/kg; SAR(10 g) = 0.250 W/kg
Smallest distance from peaks to all points 3 dB below = 7.8 mm
Ratio of SAR at M2 to SAR at M1 = 48.8%
Maximum value of SAR (measured) = 0.966 W/kg



0 dB = 0.966 W/kg = -0.15 dBW/kg

WiFi 2.4GHz_Rear_802.11 b_Ch 1_0mm_Chain A

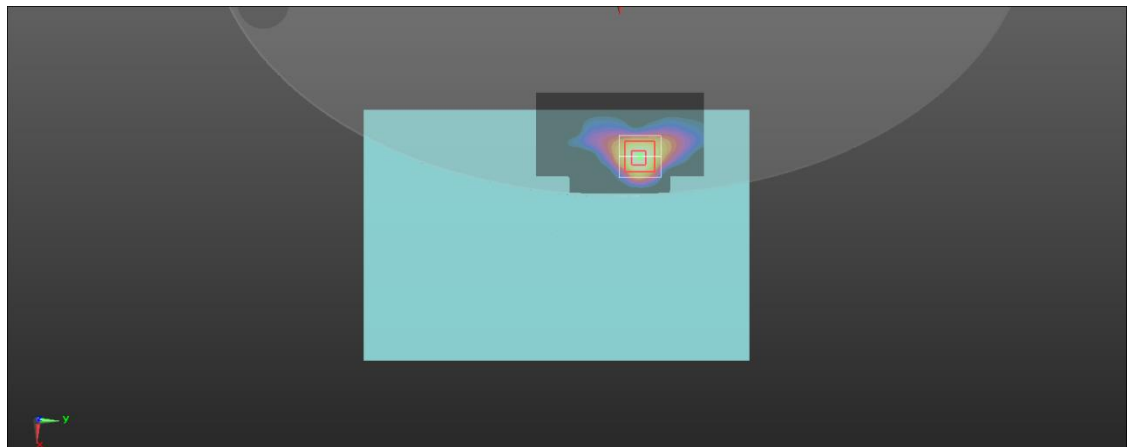
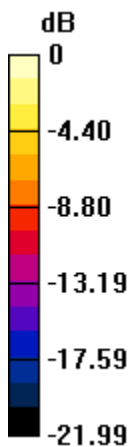
Frequency: 2412 MHz; Duty Cycle: 1:1; Room Ambient Temperature: 22.8°C; Liquid Temperature: 22.4°C
Medium parameters used : $f = 2412 \text{ MHz}$; $\sigma = 1.839 \text{ S/m}$; $\epsilon_r = 38.455$; $\rho = 1000 \text{ kg/m}^3$

DASY5 Configuration:

- Area Scan Setting: Find Secondary Maximum Within: 2.0 dB and with a peak SAR value greater than 0.0012W/kg
- Electronics: DAE4 Sn1260; Calibrated: 2021/9/20
- Probe: EX3DV4 - SN7642; ConvF(8.12, 8.12, 8.12) @ 2412 MHz; Calibrated: 2022/3/2
- Sensor-Surface: 2mm (Mechanical Surface Detection)
- Phantom: ELI

Rear/802.11b/Area Scan (61x101x1): Interpolated grid: $dx=1.200 \text{ mm}$, $dy=1.200 \text{ mm}$
Maximum value of SAR (interpolated) = 1.25 W/kg

Rear/802.11b/Zoom Scan (7x7x7)/Cube 0: Measurement grid: $dx=5\text{mm}$, $dy=5\text{mm}$, $dz=5\text{mm}$
Reference Value = 13.87 V/m; Power Drift = -0.02 dB
Peak SAR (extrapolated) = 1.56 W/kg
SAR(1 g) = 0.680 W/kg; SAR(10 g) = 0.275 W/kg
Smallest distance from peaks to all points 3 dB below = 7.8 mm
Ratio of SAR at M2 to SAR at M1 = 48.2%
Maximum value of SAR (measured) = 1.07 W/kg



0 dB = 1.07 W/kg = 0.29 dBW/kg

WiFi 5.2GHz_Rear_802.11 a_Ch 44_0mm_Chain B

Frequency: 5220 MHz; Duty Cycle: 1:1; Room Ambient Temperature: 23.1°C; Liquid Temperature: 22.7°C
Medium parameters used: $f = 5220 \text{ MHz}$; $\sigma = 4.646 \text{ S/m}$; $\epsilon_r = 35.081$; $\rho = 1000 \text{ kg/m}^3$

DASY5 Configuration:

- Area Scan Setting: Find Secondary Maximum Within: 2.0 dB and with a peak SAR value greater than 0.0012W/kg
- Electronics: DAE4 Sn1260; Calibrated: 2021/9/20
- Probe: EX3DV4 - SN7642; ConvF(5.69, 5.69, 5.69) @ 5220 MHz; Calibrated: 2022/3/2
- Sensor-Surface: 2mm (Mechanical Surface Detection)
- Phantom: ELI

Rear/802.11a/Area Scan (91x121x1): Interpolated grid: $dx=1.000 \text{ mm}$, $dy=1.000 \text{ mm}$
Maximum value of SAR (interpolated) = 1.30 W/kg

Rear/802.11a/Zoom Scan (7x7x12)/Cube 0: Measurement grid: $dx=4\text{mm}$, $dy=4\text{mm}$, $dz=2\text{mm}$

Reference Value = 15.24 V/m; Power Drift = -0.11 dB

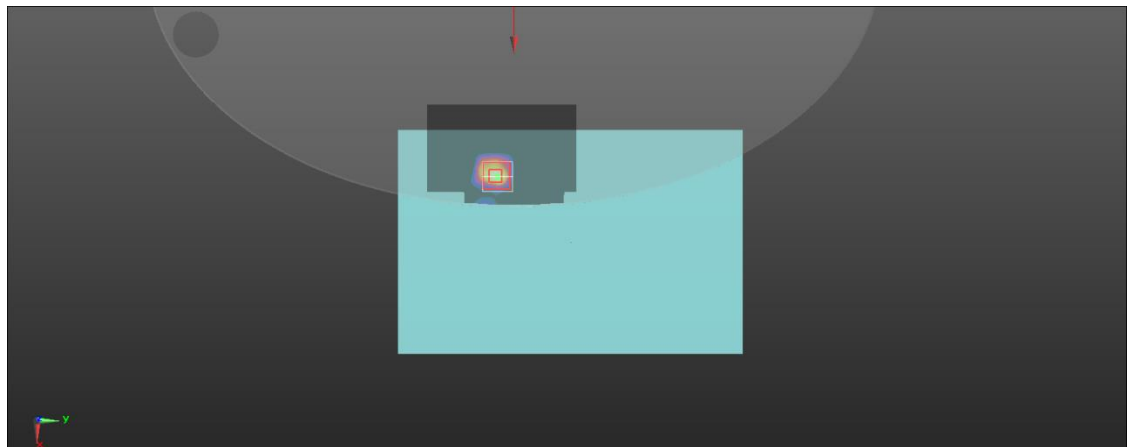
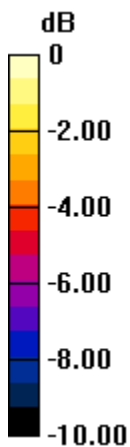
Peak SAR (extrapolated) = 2.49 W/kg

SAR(1 g) = 0.598 W/kg; SAR(10 g) = 0.191 W/kg

Smallest distance from peaks to all points 3 dB below = 6.4 mm

Ratio of SAR at M2 to SAR at M1 = 55.4%

Maximum value of SAR (measured) = 1.22 W/kg



0 dB = 1.22 W/kg = 0.86 dBW/kg

WiFi 5.2GHz_Rear_802.11 a_Ch 44_0mm_Chain A

Frequency: 5220 MHz; Duty Cycle: 1:1; Room Ambient Temperature: 23.1°C; Liquid Temperature: 22.7°C
Medium parameters used: $f = 5220 \text{ MHz}$; $\sigma = 4.646 \text{ S/m}$; $\epsilon_r = 35.081$; $\rho = 1000 \text{ kg/m}^3$

DASY5 Configuration:

- Area Scan Setting: Find Secondary Maximum Within: 2.0 dB and with a peak SAR value greater than 0.0012W/kg
- Electronics: DAE4 Sn1260; Calibrated: 2021/9/20
- Probe: EX3DV4 - SN7642; ConvF(5.69, 5.69, 5.69) @ 5220 MHz; Calibrated: 2022/3/2
- Sensor-Surface: 2mm (Mechanical Surface Detection)
- Phantom: ELI

Rear/802.11a/Area Scan (91x121x1): Interpolated grid: $dx=1.000 \text{ mm}$, $dy=1.000 \text{ mm}$
Maximum value of SAR (interpolated) = 1.08 W/kg

Rear/802.11a/Zoom Scan (7x7x12)/Cube 0: Measurement grid: $dx=4\text{mm}$, $dy=4\text{mm}$, $dz=2\text{mm}$

Reference Value = 10.66 V/m; Power Drift = -0.15 dB

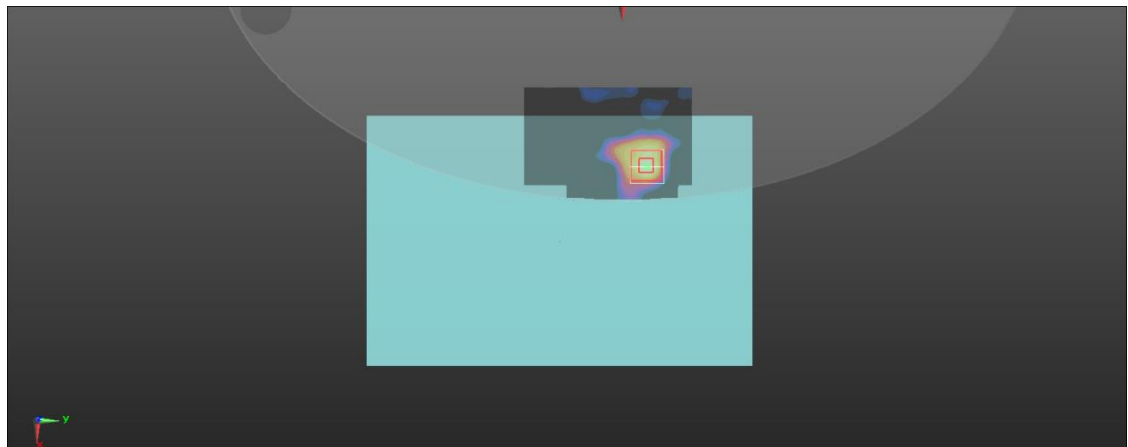
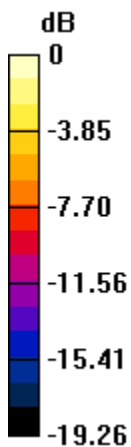
Peak SAR (extrapolated) = 1.83 W/kg

SAR(1 g) = 0.482 W/kg; SAR(10 g) = 0.154 W/kg

Smallest distance from peaks to all points 3 dB below = 6.8 mm

Ratio of SAR at M2 to SAR at M1 = 56.4%

Maximum value of SAR (measured) = 0.949 W/kg



0 dB = 0.949 W/kg = -0.23 dBW/kg

Bluetooth_Rear_GFSK_1M_Ch 0_0mm_Chain A

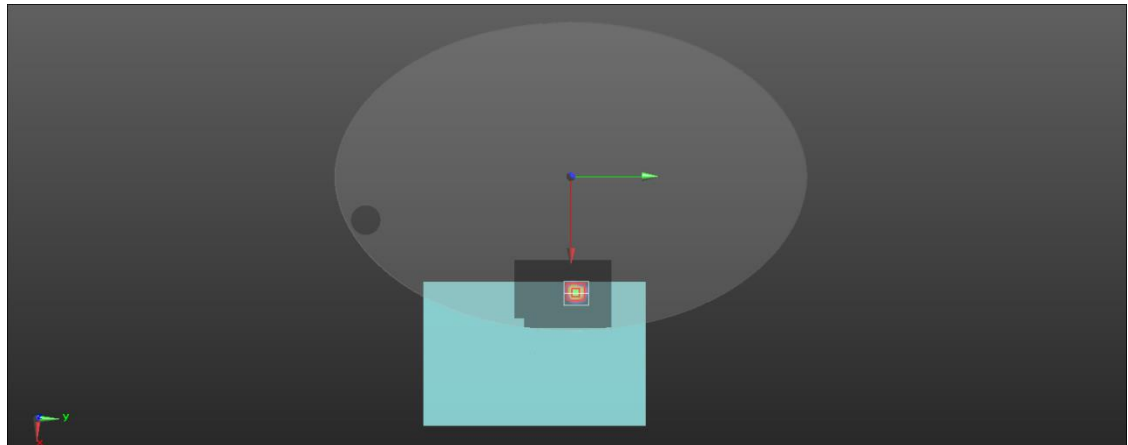
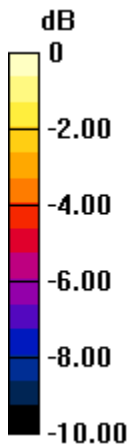
Frequency: 2402 MHz; Duty Cycle: 1:1; Room Ambient Temperature: 22.8°C; Liquid Temperature: 22.4°C
Medium parameters used : $f = 2402$ MHz; $\sigma = 1.831$ S/m; $\epsilon_r = 38.475$; $\rho = 1000$ kg/m³

DASY5 Configuration:

- Area Scan Setting: Find Secondary Maximum Within: 2.0 dB and with a peak SAR value greater than 0.0012W/kg
- Electronics: DAE4 Sn1260; Calibrated: 2021/9/20
- Probe: EX3DV4 - SN7642; ConvF(8.12, 8.12, 8.12) @ 2402 MHz; Calibrated: 2022/3/2
- Sensor-Surface: 2mm (Mechanical Surface Detection)
- Phantom: ELI

Rear/LE_GFSK/Area Scan (81x101x1): Interpolated grid: dx=1.200 mm, dy=1.200 mm
Maximum value of SAR (interpolated) = 0.0463 W/kg

Rear/LE_GFSK/Zoom Scan (7x7x7)/Cube 0: Measurement grid: dx=5mm, dy=5mm, dz=5mm
Reference Value = 4.086 V/m; Power Drift = 0.05 dB
Peak SAR (extrapolated) = 0.0820 W/kg
SAR(1 g) = 0.031 W/kg; SAR(10 g) = 0.014 W/kg
Ratio of SAR at M2 to SAR at M1 = 43.7%
Maximum value of SAR (measured) = 0.0494 W/kg



0 dB = 0.0494 W/kg = -13.06 dBW/kg