

FCC Part 22H

Frequency stability

DC 2A n5A , Normal

Mode	Value (Hz)	Limit (Hz)	Result
DC_2A_n5A_10MHz 5MHz_15kHz_1880MHz 836.5MHz_DFT-s-OFDM QPSK_RB0 RB25@0	-2.48	-2091.25 ~ 2091.25	Pass
DC_2A_n5A_10MHz 10MHz_15kHz_1880MHz 836.5MHz_DFT-s-OFDM QPSK_RB0 RB50@0	-3.62	-2091.25 ~ 2091.25	Pass
DC_2A_n5A_10MHz 15MHz_15kHz_1880MHz 836.5MHz_DFT-s-OFDM QPSK_RB0 RB75@0	-4.89	-2091.25 ~ 2091.25	Pass
DC_2A_n5A_10MHz 20MHz_15kHz_1880MHz 836.5MHz_DFT-s-OFDM QPSK_RB0 RB100@0	-2.98	-2091.25 ~ 2091.25	Pass

DC 2A n5A , T1/VN

Mode	Value (Hz)	Limit (Hz)	Result
DC_2A_n5A_10MHz 5MHz_15kHz_1880MHz 836.5MHz_DFT-s-OFDM QPSK_RB0 RB25@0	-0.83	-2091.25 ~ 2091.25	Pass
DC_2A_n5A_10MHz 10MHz_15kHz_1880MHz 836.5MHz_DFT-s-OFDM QPSK_RB0 RB50@0	-1.19	-2091.25 ~ 2091.25	Pass
DC_2A_n5A_10MHz 15MHz_15kHz_1880MHz 836.5MHz_DFT-s-OFDM QPSK_RB0 RB75@0	0	-2091.25 ~ 2091.25	Pass
DC_2A_n5A_10MHz 20MHz_15kHz_1880MHz 836.5MHz_DFT-s-OFDM QPSK_RB0 RB100@0	-7.28	-2091.25 ~ 2091.25	Pass

DC 2A n5A , T2/VN

Mode	Value (Hz)	Limit (Hz)	Result
DC_2A_n5A_10MHz 5MHz_15kHz_1880MHz 836.5MHz_DFT-s-OFDM QPSK_RB0 RB25@0	-0.36	-2091.25 ~ 2091.25	Pass
DC_2A_n5A_10MHz 10MHz_15kHz_1880MHz 836.5MHz_DFT-s-OFDM QPSK_RB0 RB50@0	1.53	-2091.25 ~ 2091.25	Pass
DC_2A_n5A_10MHz 15MHz_15kHz_1880MHz 836.5MHz_DFT-s-OFDM QPSK_RB0 RB75@0	-4.29	-2091.25 ~ 2091.25	Pass
DC_2A_n5A_10MHz 20MHz_15kHz_1880MHz 836.5MHz_DFT-s-OFDM QPSK_RB0 RB100@0	-5.83	-2091.25 ~ 2091.25	Pass

DC 2A n5A , T3/VN

Mode	Value (Hz)	Limit (Hz)	Result
DC_2A_n5A_10MHz 5MHz_15kHz_1880MHz 836.5MHz_DFT-s-OFDM QPSK_RB0 RB25@0	-3.05	-2091.25 ~ 2091.25	Pass

Mode	Value (Hz)	Limit (Hz)	Result
DC_2A_n5A_10MHz 10MHz_15kHz_1880MHz 836.5MHz_DFT-s-OFDM QPSK_RB0 RB50@0	-2.24	-2091.25 ~ 2091.25	Pass
DC_2A_n5A_10MHz 15MHz_15kHz_1880MHz 836.5MHz_DFT-s-OFDM QPSK_RB0 RB75@0	-4.51	-2091.25 ~ 2091.25	Pass
DC_2A_n5A_10MHz 20MHz_15kHz_1880MHz 836.5MHz_DFT-s-OFDM QPSK_RB0 RB100@0	-2.03	-2091.25 ~ 2091.25	Pass

DC 2A n5A , T4/VN

Mode	Value (Hz)	Limit (Hz)	Result
DC_2A_n5A_10MHz 5MHz_15kHz_1880MHz 836.5MHz_DFT-s-OFDM QPSK_RB0 RB25@0	-0.8	-2091.25 ~ 2091.25	Pass
DC_2A_n5A_10MHz 10MHz_15kHz_1880MHz 836.5MHz_DFT-s-OFDM QPSK_RB0 RB50@0	2.66	-2091.25 ~ 2091.25	Pass
DC_2A_n5A_10MHz 15MHz_15kHz_1880MHz 836.5MHz_DFT-s-OFDM QPSK_RB0 RB75@0	-3.37	-2091.25 ~ 2091.25	Pass
DC_2A_n5A_10MHz 20MHz_15kHz_1880MHz 836.5MHz_DFT-s-OFDM QPSK_RB0 RB100@0	-2.68	-2091.25 ~ 2091.25	Pass

DC 2A n5A , T5/VN

Mode	Value (Hz)	Limit (Hz)	Result
DC_2A_n5A_10MHz 5MHz_15kHz_1880MHz 836.5MHz_DFT-s-OFDM QPSK_RB0 RB25@0	-0.44	-2091.25 ~ 2091.25	Pass
DC_2A_n5A_10MHz 10MHz_15kHz_1880MHz 836.5MHz_DFT-s-OFDM QPSK_RB0 RB50@0	3.24	-2091.25 ~ 2091.25	Pass
DC_2A_n5A_10MHz 15MHz_15kHz_1880MHz 836.5MHz_DFT-s-OFDM QPSK_RB0 RB75@0	-4.85	-2091.25 ~ 2091.25	Pass
DC_2A_n5A_10MHz 20MHz_15kHz_1880MHz 836.5MHz_DFT-s-OFDM QPSK_RB0 RB100@0	-5.16	-2091.25 ~ 2091.25	Pass

DC 2A n5A , T6/VN

Mode	Value (Hz)	Limit (Hz)	Result
DC_2A_n5A_10MHz 5MHz_15kHz_1880MHz 836.5MHz_DFT-s-OFDM QPSK_RB0 RB25@0	-1.78	-2091.25 ~ 2091.25	Pass
DC_2A_n5A_10MHz 10MHz_15kHz_1880MHz 836.5MHz_DFT-s-OFDM QPSK_RB0 RB50@0	-1.74	-2091.25 ~ 2091.25	Pass
DC_2A_n5A_10MHz 15MHz_15kHz_1880MHz 836.5MHz_DFT-s-OFDM QPSK_RB0 RB75@0	1.09	-2091.25 ~ 2091.25	Pass
DC_2A_n5A_10MHz 20MHz_15kHz_1880MHz 836.5MHz_DFT-s-OFDM QPSK_RB0 RB100@0	-6.39	-2091.25 ~ 2091.25	Pass

DC 2A n5A , T7/VN

Mode	Value (Hz)	Limit (Hz)	Result
DC_2A_n5A_10MHz 5MHz_15kHz_1880MHz 836.5MHz_DFT-s-OFDM QPSK_RB0 RB25@0	-0.27	-2091.25 ~ 2091.25	Pass
DC_2A_n5A_10MHz 10MHz_15kHz_1880MHz 836.5MHz_DFT-s-OFDM QPSK_RB0 RB50@0	-3.25	-2091.25 ~ 2091.25	Pass
DC_2A_n5A_10MHz 15MHz_15kHz_1880MHz 836.5MHz_DFT-s-OFDM QPSK_RB0 RB75@0	-6.3	-2091.25 ~ 2091.25	Pass
DC_2A_n5A_10MHz 20MHz_15kHz_1880MHz 836.5MHz_DFT-s-OFDM QPSK_RB0 RB100@0	-6.56	-2091.25 ~ 2091.25	Pass

DC 2A n5A , T8/VN

Mode	Value (Hz)	Limit (Hz)	Result
DC_2A_n5A_10MHz 5MHz_15kHz_1880MHz 836.5MHz_DFT-s-OFDM QPSK_RB0 RB25@0	-0.08	-2091.25 ~ 2091.25	Pass
DC_2A_n5A_10MHz 10MHz_15kHz_1880MHz 836.5MHz_DFT-s-OFDM QPSK_RB0 RB50@0	1.06	-2091.25 ~ 2091.25	Pass
DC_2A_n5A_10MHz 15MHz_15kHz_1880MHz 836.5MHz_DFT-s-OFDM QPSK_RB0 RB75@0	-5.16	-2091.25 ~ 2091.25	Pass
DC_2A_n5A_10MHz 20MHz_15kHz_1880MHz 836.5MHz_DFT-s-OFDM QPSK_RB0 RB100@0	-7.41	-2091.25 ~ 2091.25	Pass

DC 2A n5A , TN/VH

Mode	Value (Hz)	Limit (Hz)	Result
DC_2A_n5A_10MHz 5MHz_15kHz_1880MHz 836.5MHz_DFT-s-OFDM QPSK_RB0 RB25@0	0.67	-2091.25 ~ 2091.25	Pass
DC_2A_n5A_10MHz 10MHz_15kHz_1880MHz 836.5MHz_DFT-s-OFDM QPSK_RB0 RB50@0	1.16	-2091.25 ~ 2091.25	Pass
DC_2A_n5A_10MHz 15MHz_15kHz_1880MHz 836.5MHz_DFT-s-OFDM QPSK_RB0 RB75@0	-3.87	-2091.25 ~ 2091.25	Pass
DC_2A_n5A_10MHz 20MHz_15kHz_1880MHz 836.5MHz_DFT-s-OFDM QPSK_RB0 RB100@0	-2.56	-2091.25 ~ 2091.25	Pass

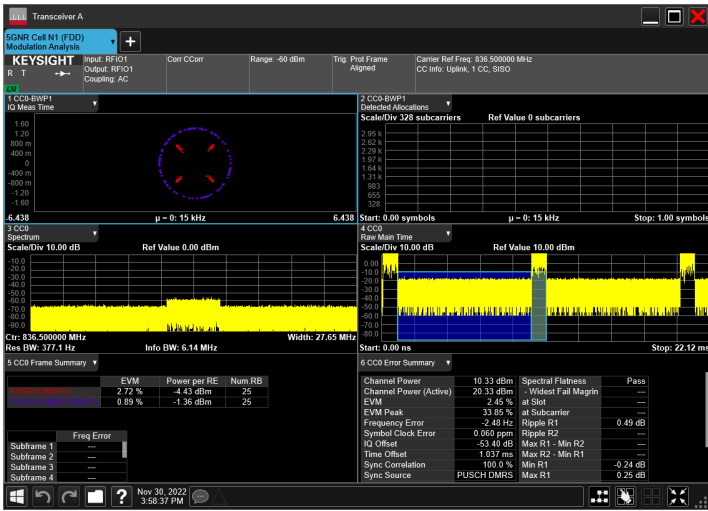
DC 2A n5A , TN/VL

Mode	Value (Hz)	Limit (Hz)	Result
DC_2A_n5A_10MHz 5MHz_15kHz_1880MHz 836.5MHz_DFT-s-OFDM QPSK_RB0 RB25@0	2.7	-2091.25 ~ 2091.25	Pass
DC_2A_n5A_10MHz 10MHz_15kHz_1880MHz 836.5MHz_DFT-s-OFDM QPSK_RB0 RB50@0	3.26	-2091.25 ~ 2091.25	Pass
DC_2A_n5A_10MHz 15MHz_15kHz_1880MHz 836.5MHz_DFT-s-OFDM QPSK_RB0 RB75@0	-0.43	-2091.25 ~ 2091.25	Pass

Mode	Value (Hz)	Limit (Hz)	Result
DC_2A_n5A_10MHz 20MHz_15kHz_1880MHz 836.5MHz_DFT-s-OFDM QPSK_RB0 RB100@0	-2.74	-2091.25 ~ 2091.25	Pass

DC_2A_n5A , Normal

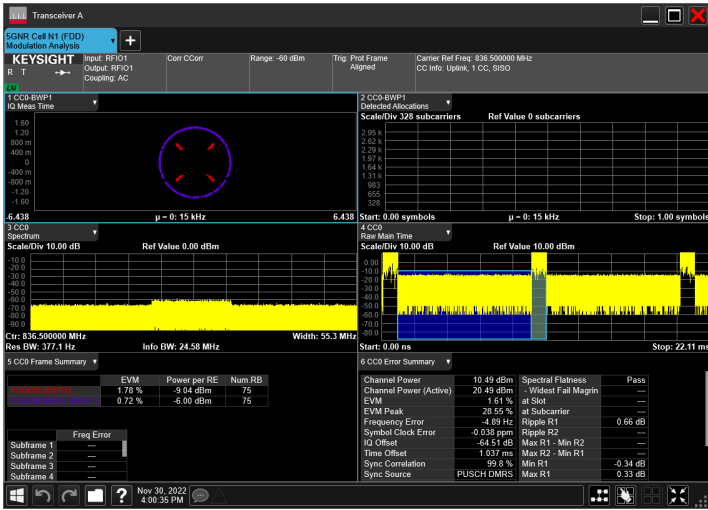
DC_2A_n5A_10MHz|5MHz 15kHz 1880MHz|836.5MHz_DFT
-s-OFDM QPSK_RB0|RB25@0



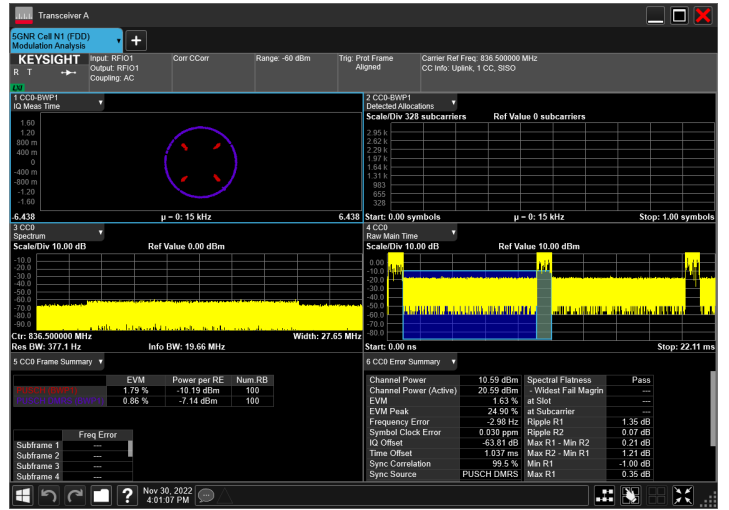
DC_2A_n5A_10MHz|10MHz 15kHz 1880MHz|836.5MHz_DF
T-s-OFDM QPSK_RB0|RB50@0



DC_2A_n5A_10MHz|15MHz 15kHz 1880MHz|836.5MHz_DF
T-s-OFDM QPSK_RB0|RB75@0

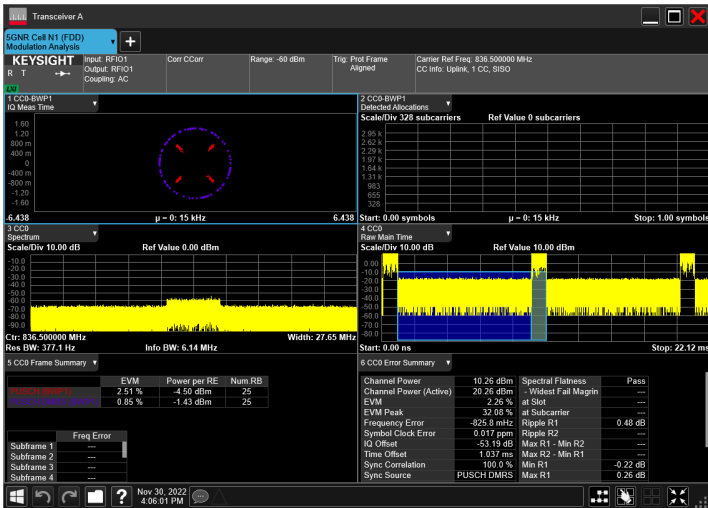


DC_2A_n5A_10MHz|20MHz 15kHz 1880MHz|836.5MHz_DF
T-s-OFDM QPSK_RB0|RB100@0

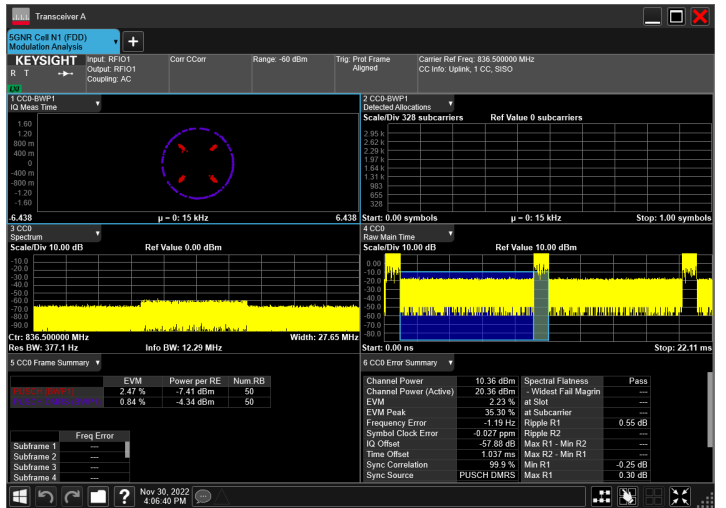


DC_2A_n5A , T1/VN

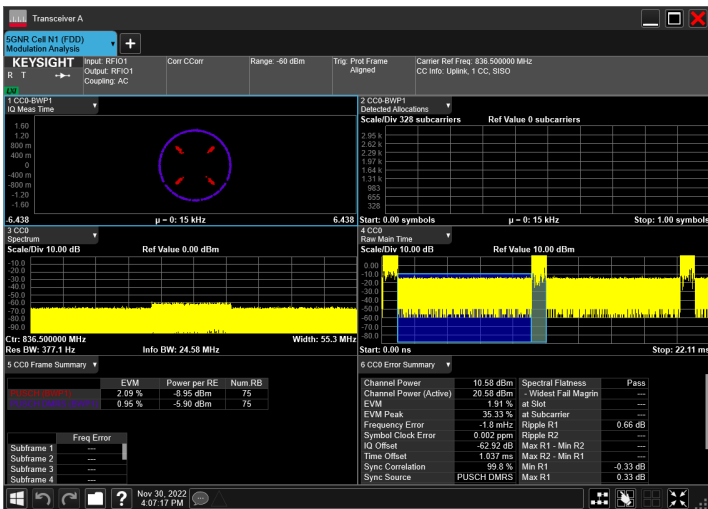
DC_2A_n5A_10MHz|5MHz 15kHz 1880MHz|836.5MHz_DFT
-s-OFDM QPSK_RB0|RB25@0



DC_2A_n5A_10MHz|10MHz 15kHz 1880MHz|836.5MHz_DF
T-s-OFDM QPSK_RB0|RB50@0



DC_2A_n5A_10MHz|15MHz 15kHz 1880MHz|836.5MHz_DF
T-s-OFDM QPSK_RB0|RB75@0



DC_2A_n5A_10MHz|20MHz 15kHz 1880MHz|836.5MHz_DF
T-s-OFDM QPSK_RB0|RB100@0



DC_2A_n5A , T2/VN

DC_2A_n5A_10MHz|5MHz 15kHz 1880MHz|836.5MHz_DFT
-s-OFDM QPSK_RB0|RB25@0



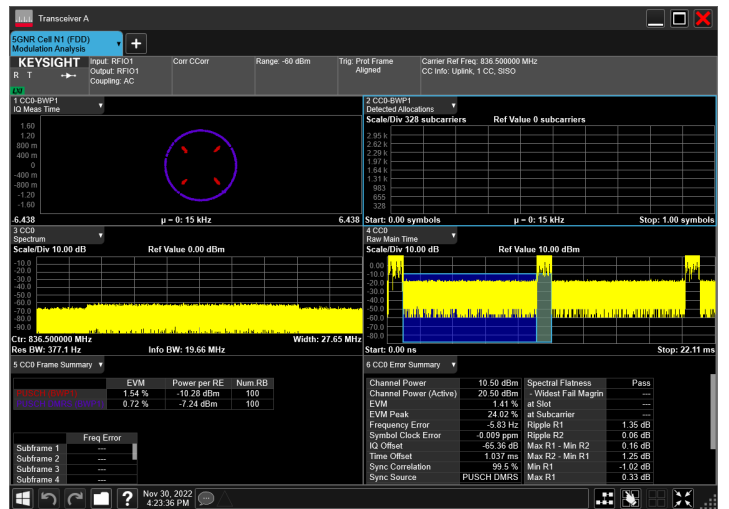
DC_2A_n5A_10MHz|10MHz 15kHz 1880MHz|836.5MHz_DF
T-s-OFDM QPSK_RB0|RB50@0



DC_2A_n5A_10MHz|15MHz 15kHz 1880MHz|836.5MHz_DF
T-s-OFDM QPSK_RB0|RB75@0

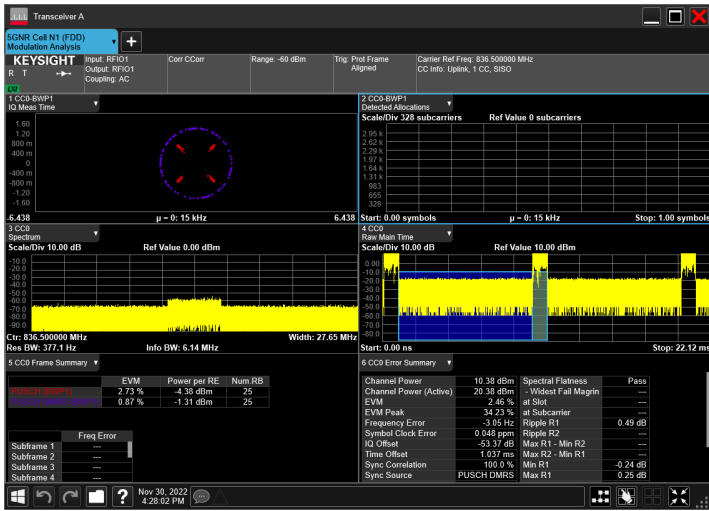


DC_2A_n5A_10MHz|20MHz 15kHz 1880MHz|836.5MHz_DF
T-s-OFDM QPSK_RB0|RB100@0



DC_2A_n5A , T3/VN

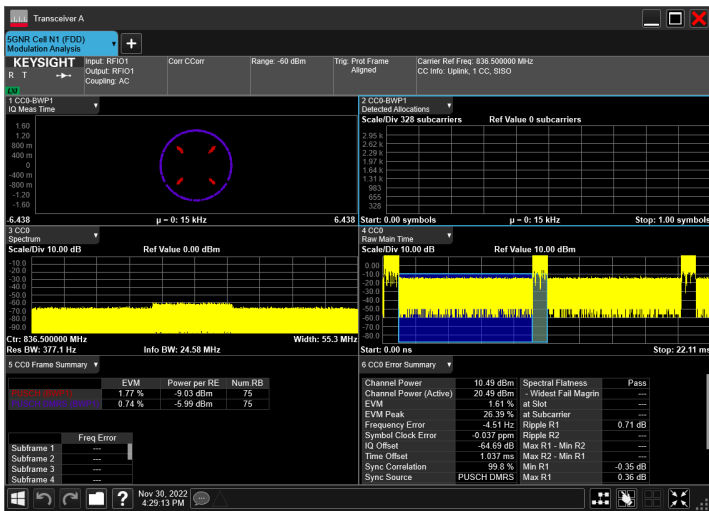
DC_2A_n5A_10MHz|5MHz 15kHz 1880MHz|836.5MHz_DFT
-s-OFDM QPSK_RB0|RB25@0



DC_2A_n5A_10MHz|10MHz 15kHz 1880MHz|836.5MHz_DF
T-s-OFDM QPSK_RB0|RB50@0



DC_2A_n5A_10MHz|15MHz 15kHz 1880MHz|836.5MHz_DF
T-s-OFDM QPSK_RB0|RB75@0

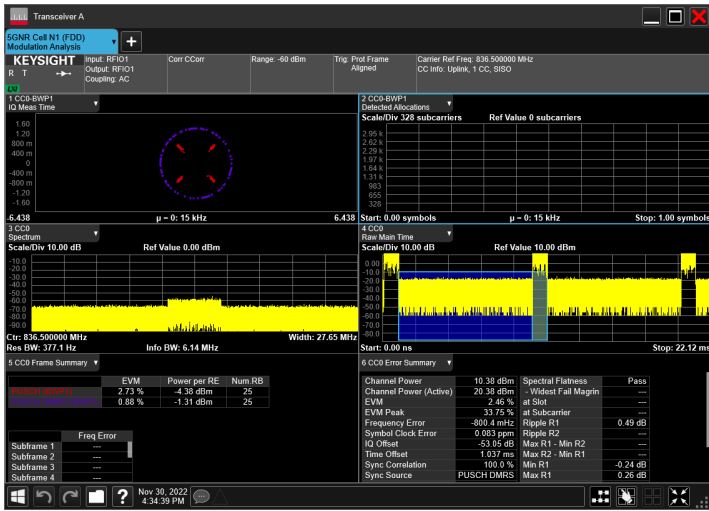


DC_2A_n5A_10MHz|20MHz 15kHz 1880MHz|836.5MHz_DF
T-s-OFDM QPSK_RB0|RB100@0

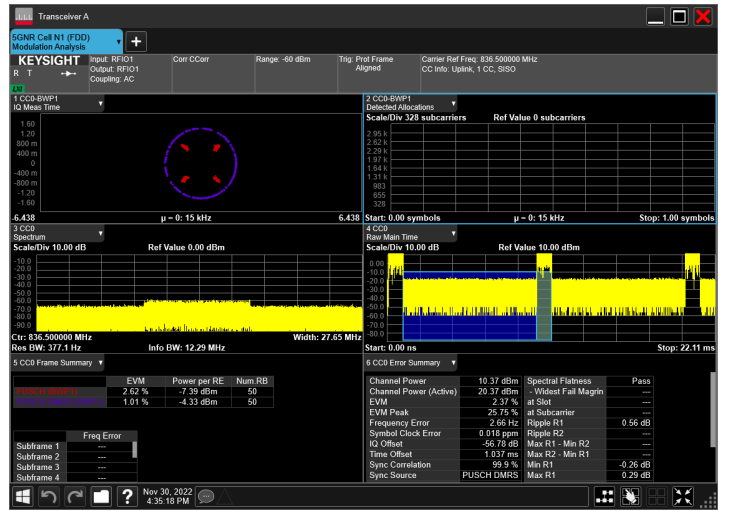


DC_2A_n5A , T4/VN

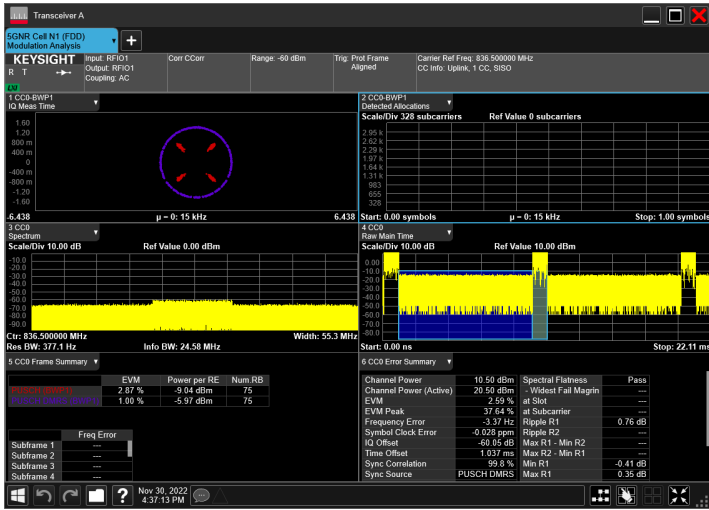
DC_2A_n5A_10MHz|5MHz 15kHz 1880MHz|836.5MHz_DFT
-s-OFDM QPSK_RB0|RB25@0



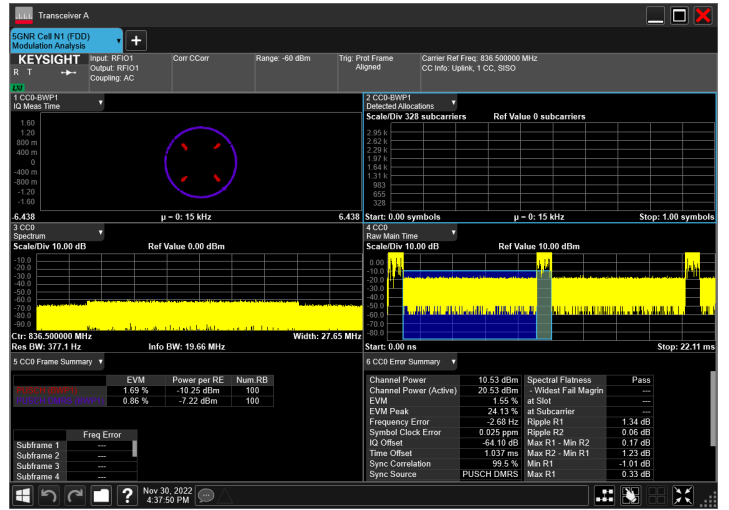
DC_2A_n5A_10MHz|10MHz 15kHz 1880MHz|836.5MHz_DF
T-s-OFDM QPSK_RB0|RB50@0



DC_2A_n5A_10MHz|15MHz 15kHz 1880MHz|836.5MHz_DF
T-s-OFDM QPSK_RB0|RB75@0

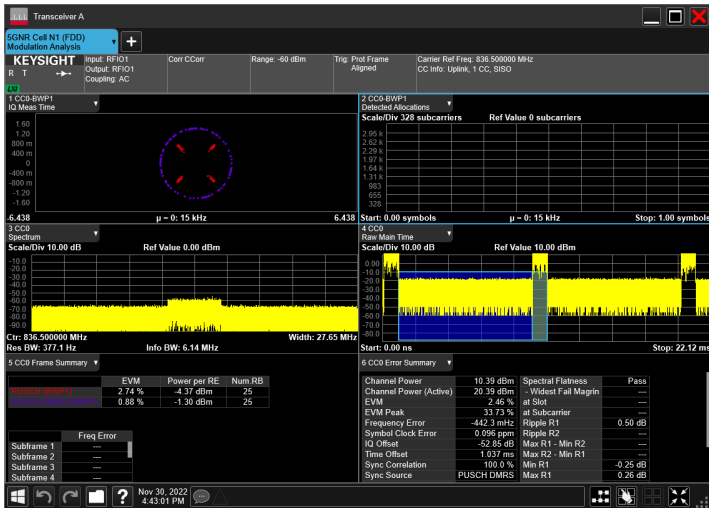


DC_2A_n5A_10MHz|20MHz 15kHz 1880MHz|836.5MHz_DF
T-s-OFDM QPSK_RB0|RB100@0



DC_2A_n5A , T5/VN

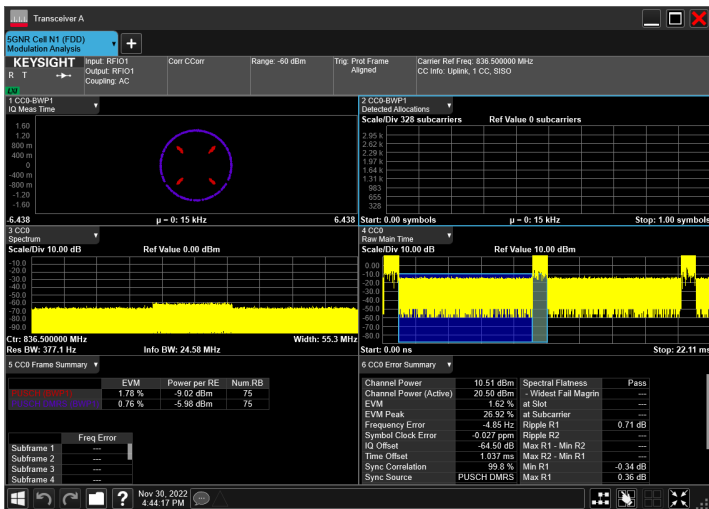
DC_2A_n5A_10MHz|5MHz 15kHz 1880MHz|836.5MHz_DFT
-s-OFDM QPSK_RB0|RB25@0



DC_2A_n5A_10MHz|10MHz 15kHz 1880MHz|836.5MHz_DF
T-s-OFDM QPSK_RB0|RB50@0



DC_2A_n5A_10MHz|15MHz 15kHz 1880MHz|836.5MHz_DF
T-s-OFDM QPSK_RB0|RB75@0

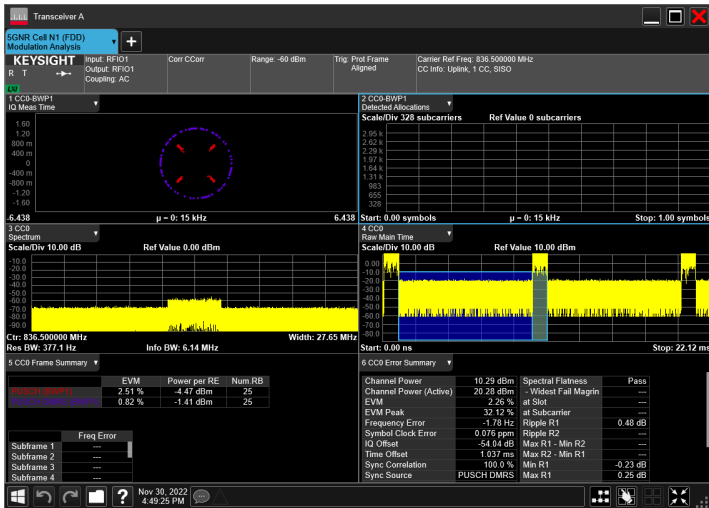


DC_2A_n5A_10MHz|20MHz 15kHz 1880MHz|836.5MHz_DF
T-s-OFDM QPSK_RB0|RB100@0



DC_2A_n5A , T6/VN

DC_2A_n5A_10MHz|5MHz 15kHz 1880MHz|836.5MHz_DFT
-s-OFDM QPSK_RB0|RB25@0



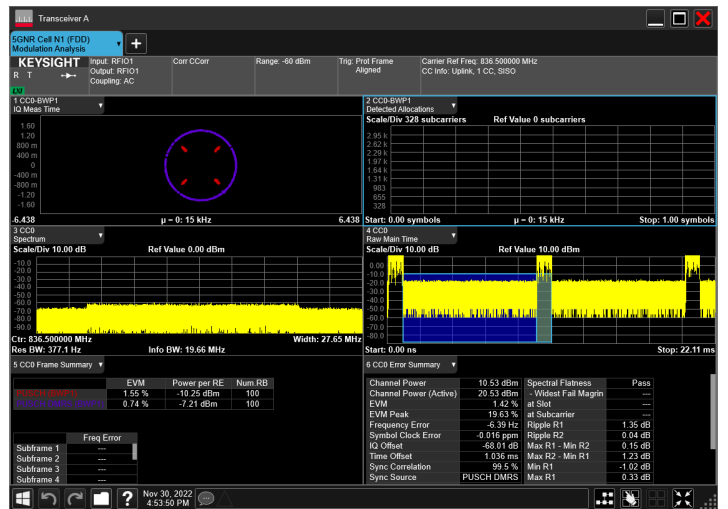
DC_2A_n5A_10MHz|10MHz 15kHz 1880MHz|836.5MHz_DF
T-s-OFDM QPSK_RB0|RB50@0



DC_2A_n5A_10MHz|15MHz 15kHz 1880MHz|836.5MHz_DF
T-s-OFDM QPSK_RB0|RB75@0

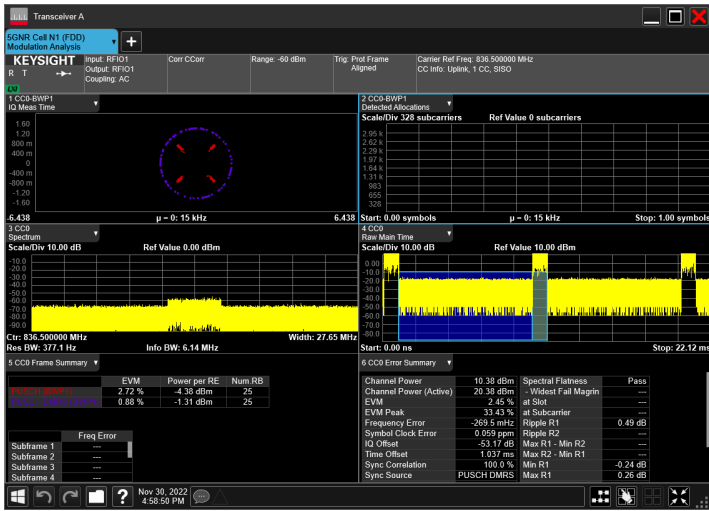


DC_2A_n5A_10MHz|20MHz 15kHz 1880MHz|836.5MHz_DF
T-s-OFDM QPSK_RB0|RB100@0



DC_2A_n5A , T7/VN

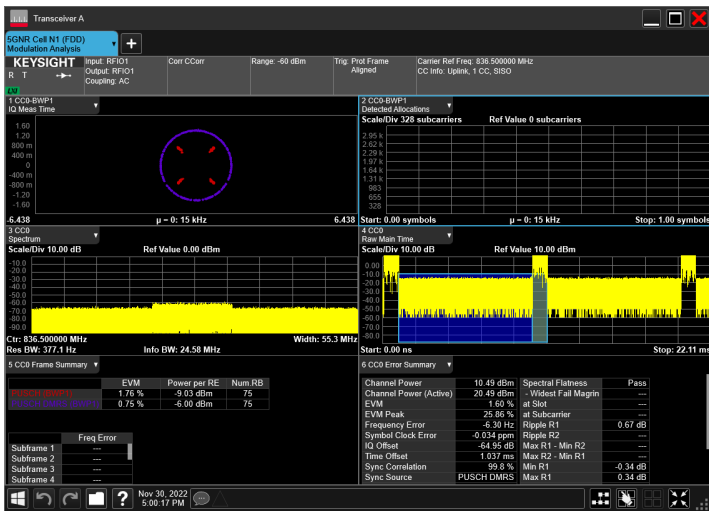
DC_2A_n5A_10MHz|5MHz 15kHz 1880MHz|836.5MHz_DFT
-s-OFDM QPSK_RB0|RB25@0



DC_2A_n5A_10MHz|10MHz 15kHz 1880MHz|836.5MHz_DF
T-s-OFDM QPSK_RB0|RB50@0



DC_2A_n5A_10MHz|15MHz 15kHz 1880MHz|836.5MHz_DF
T-s-OFDM QPSK_RB0|RB75@0

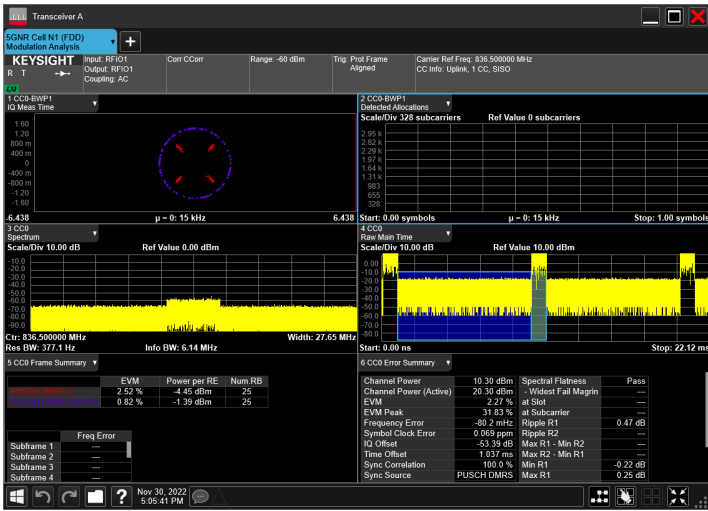


DC_2A_n5A_10MHz|20MHz 15kHz 1880MHz|836.5MHz_DF
T-s-OFDM QPSK_RB0|RB100@0

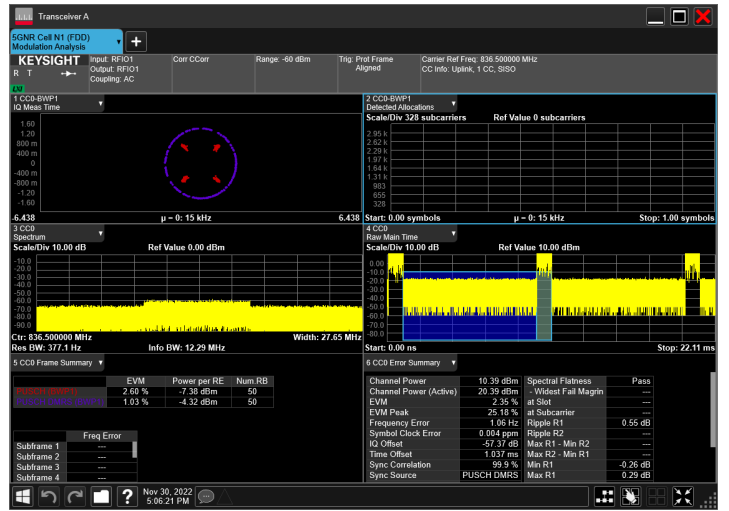


DC_2A_n5A , T8/VN

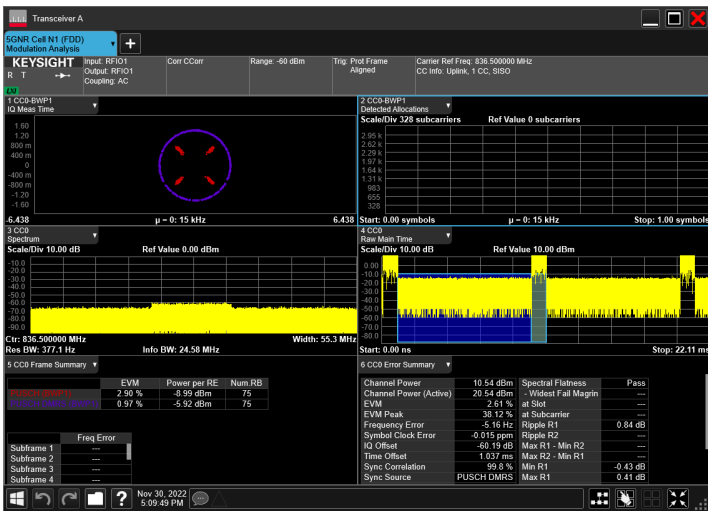
DC_2A_n5A_10MHz|5MHz 15kHz 1880MHz|836.5MHz_DFT
-s-OFDM QPSK_RB0|RB25@0



DC_2A_n5A_10MHz|10MHz 15kHz 1880MHz|836.5MHz_DF
T-s-OFDM QPSK_RB0|RB50@0



DC_2A_n5A_10MHz|15MHz 15kHz 1880MHz|836.5MHz_DF
T-s-OFDM QPSK_RB0|RB75@0

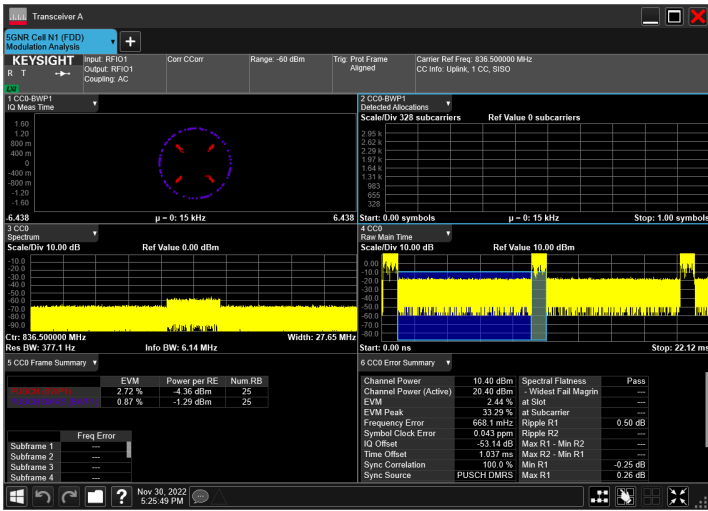


DC_2A_n5A_10MHz|20MHz 15kHz 1880MHz|836.5MHz_DF
T-s-OFDM QPSK_RB0|RB100@0



DC_2A_n5A , TN/VH

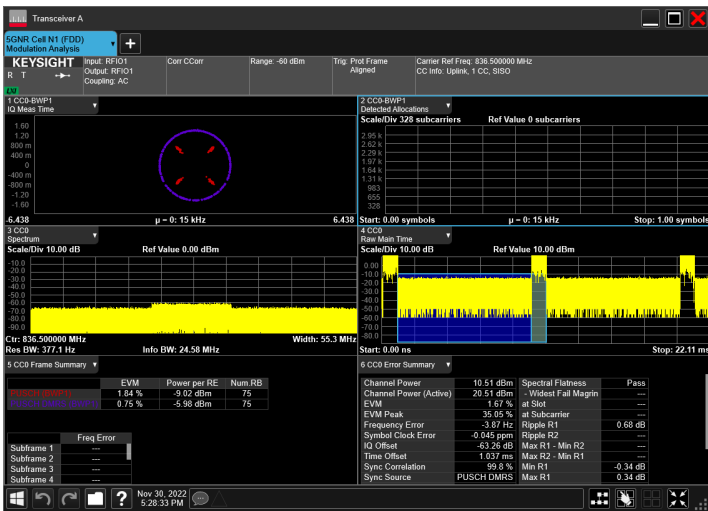
DC_2A_n5A_10MHz|5MHz 15kHz 1880MHz|836.5MHz_DFT
-s-OFDM QPSK_RB0|RB25@0



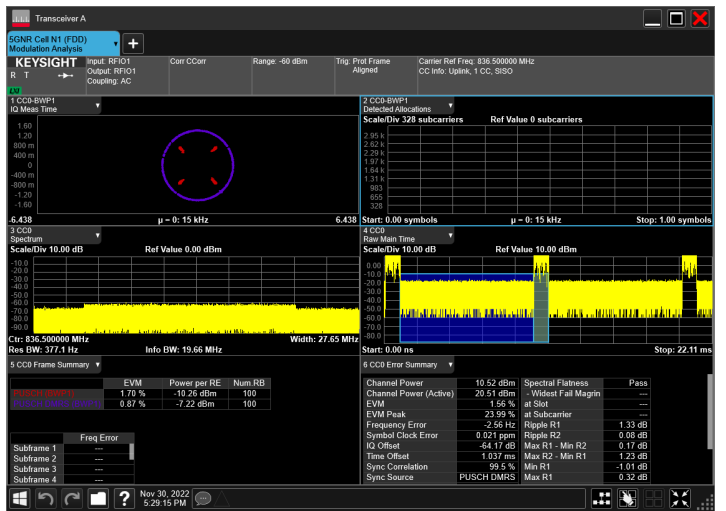
DC_2A_n5A_10MHz|10MHz 15kHz 1880MHz|836.5MHz_DF
T-s-OFDM QPSK_RB0|RB50@0



DC_2A_n5A_10MHz|15MHz 15kHz 1880MHz|836.5MHz_DF
T-s-OFDM QPSK_RB0|RB75@0

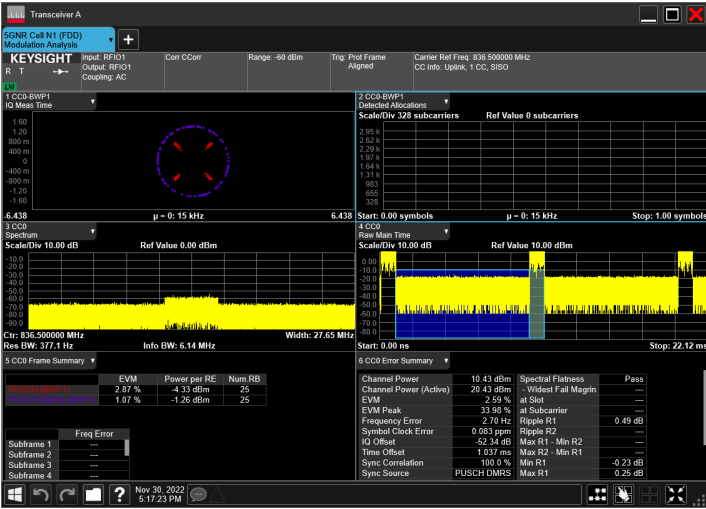


DC_2A_n5A_10MHz|20MHz 15kHz 1880MHz|836.5MHz_DF
T-s-OFDM QPSK_RB0|RB100@0

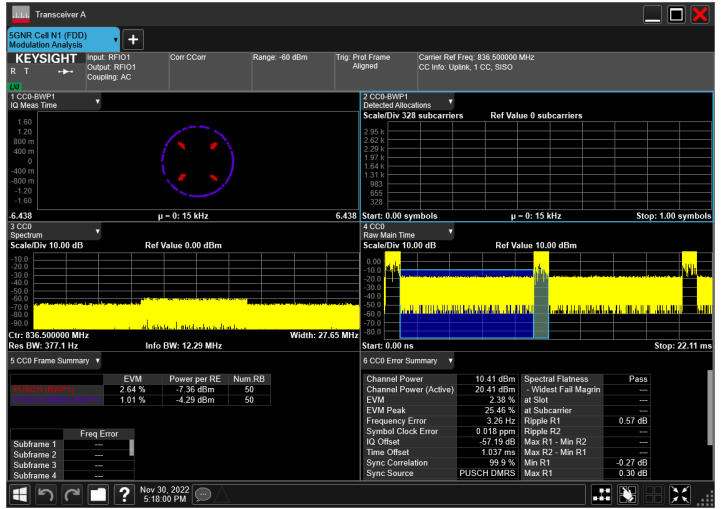


DC_2A_n5A , TN/VL

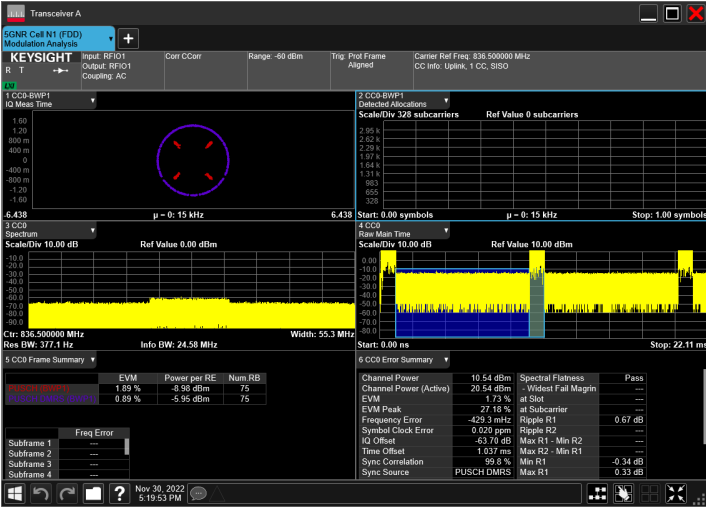
DC_2A_n5A_10MHz|5MHz 15kHz 1880MHz|836.5MHz_DFT
-s-OFDM QPSK_RB0|RB25@0



DC_2A_n5A_10MHz|10MHz 15kHz 1880MHz|836.5MHz_DF
T-s-OFDM QPSK_RB0|RB50@0



DC_2A_n5A_10MHz|15MHz 15kHz 1880MHz|836.5MHz_DF
T-s-OFDM QPSK_RB0|RB75@0



DC_2A_n5A_10MHz|20MHz 15kHz 1880MHz|836.5MHz_DF
T-s-OFDM QPSK_RB0|RB100@0

