

Measurement Report for Device  
Device Under Test Properties

Model, Manufacturer	Dimensions [mm]	IMEI	DUT Type
Device,	84.0 x 130.0 x 19.0		Hotspot

Exposure Conditions

Phantom Section	Position, Test Distance [mm]	Frequency [MHz]	Conversion Factor
5G	FRONT, 10.00	38500.0	1.0

Hardware Setup

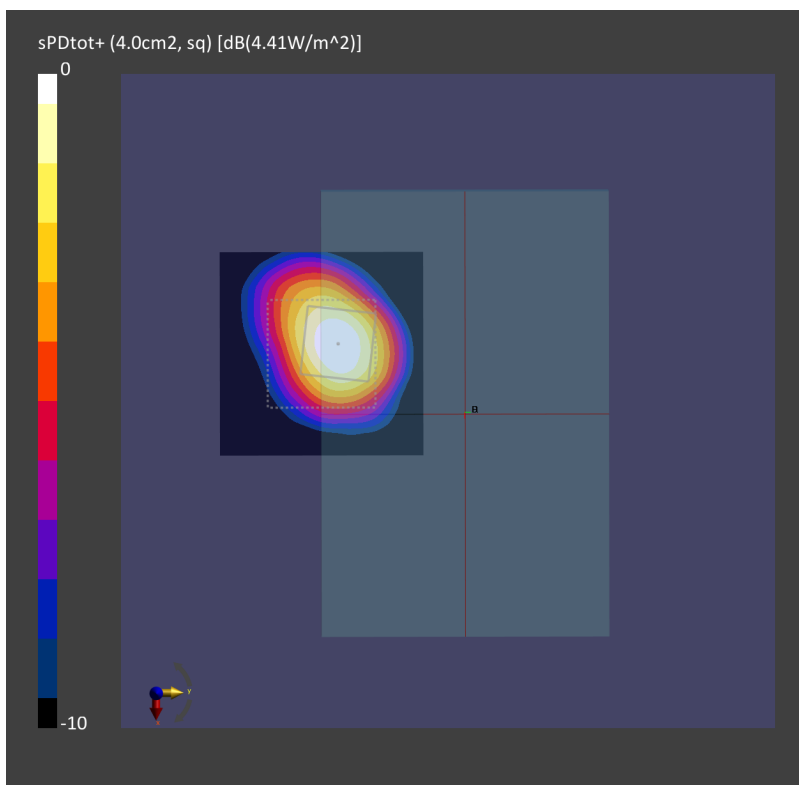
Phantom	Medium	Probe, Calibration Date	DAE, Calibration Date
mmWave - xxxx	Air -	EUmmWV4 - SN9441_F1-78GHz, 2020-11-24	DAE4 Sn316, 2021-01-19

Scans Setup

Scan Type	5G Scan
Grid Extents [mm]	60.0 x 60.0
Grid Steps [lambda]	0.25 x 0.25
Sensor Surface [mm]	10.0

Measurement Results

Date	2021-09-04, 01:30
Avg. Area [cm <sup>2</sup> ]	4.00
psPDn+ [W/m <sup>2</sup> ]	4.01
psPDtot+ [W/m <sup>2</sup> ]	4.41
H <sub>max</sub> [A/m]	0.158
E <sub>max</sub> [V/m]	54.5
max(Stot) [W/m <sup>2</sup> ]	8.05
Power Drift [dB]	-0.04



Measurement Report for Device  
Device Under Test Properties

Model, Manufacturer	Dimensions [mm]	IMEI	DUT Type
Device,	84.0 x 130.0 x 19.0		Hotspot

Exposure Conditions

Phantom Section	Position, Test Distance [mm]	Frequency [MHz]	Conversion Factor
5G	FRONT, 10.00	27500.0	1.0

Hardware Setup

Phantom	Medium	Probe, Calibration Date	DAE, Calibration Date
mmWave - xxxx	Air -	EUmmWV4 - SN9441_F1-78GHz, 2020-11-24	DAE4 Sn656, 2021-01-22

Scans Setup

Scan Type	5G Scan
Grid Extents [mm]	60.0 x 60.0
Grid Steps [lambda]	0.25 x 0.25
Sensor Surface [mm]	10.0

Measurement Results

Date	2021-07-25, 10:46
Avg. Area [cm <sup>2</sup> ]	4.00
psPDn+ [W/m <sup>2</sup> ]	2.43
psPDtot+ [W/m <sup>2</sup> ]	3.13
H <sub>max</sub> [A/m]	0.137
E <sub>max</sub> [V/m]	53.7
max(Stot) [W/m <sup>2</sup> ]	6.28
Power Drift [dB]	-0.11

