



Appendix D. Photographs of EUT and Setup

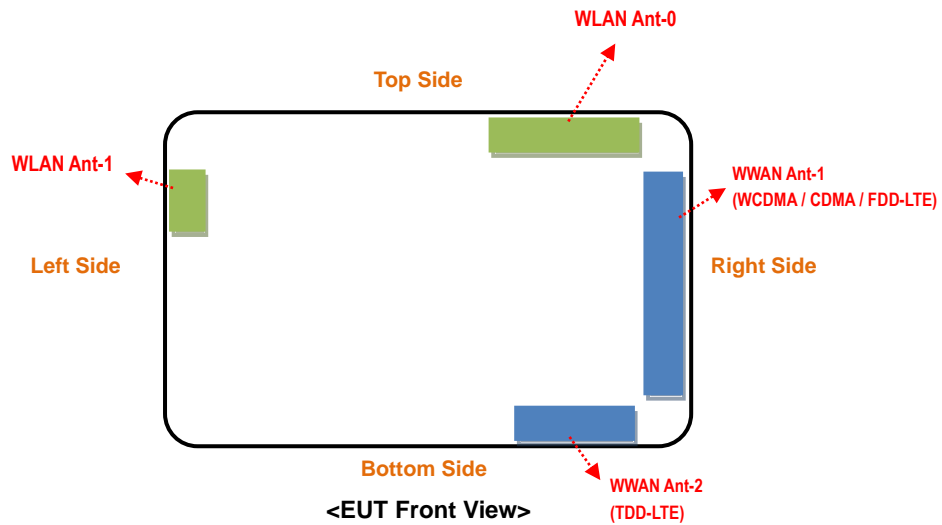
FCC SAR Test Report

<Photographs of EUT>



FCC SAR Test Report

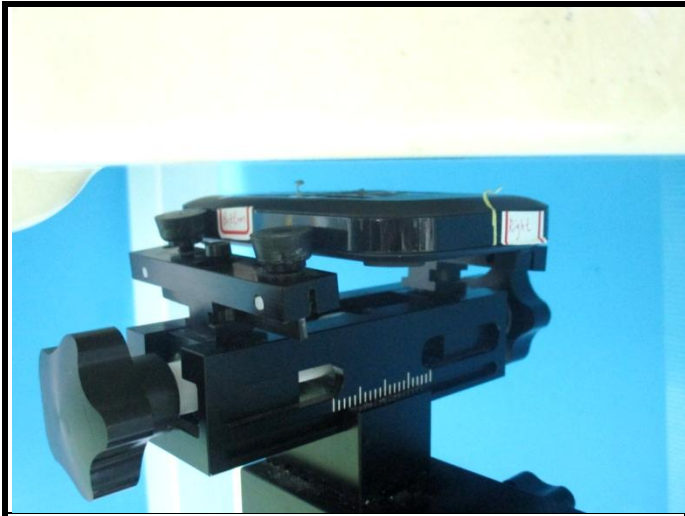
<Antenna Location>



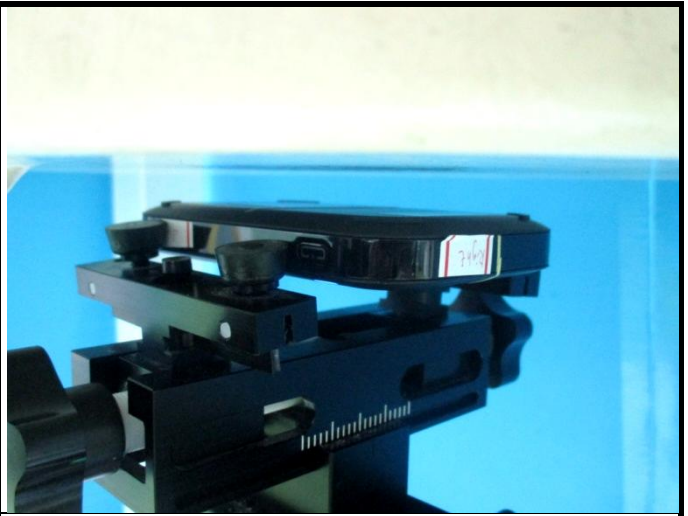
The separation distance for antenna to edge:

Antenna	To Top Side (mm)	To Bottom Side (mm)	To Left Side (mm)	To Right Side (mm)
WWAN Ant-1	5.25	5.25	95	2.5
WWAN Ant-2	61.1	1.9	68.8	9.6
WLAN Ant-0	2.3	61.1	62.1	10
WLAN Ant-1	11.6	45.7	2.5	98.2

<Photographs of SAR Setup>



Hotspot - Front Face of EUT at 10 mm



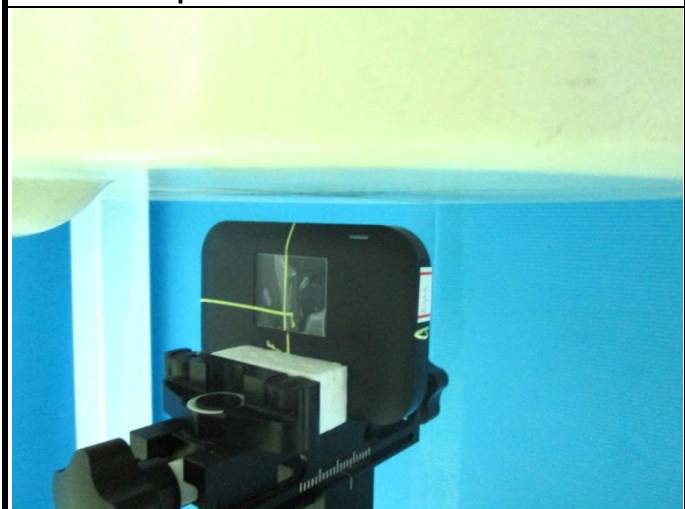
Hotspot - Rear Face of EUT at 10 mm



Hotspot - Left Side of EUT at 10 mm



Hotspot - Right Side of EUT at 10 mm



Hotspot - Top Side of EUT at 10 mm



Hotspot - Bottom Side of EUT at 10 mm