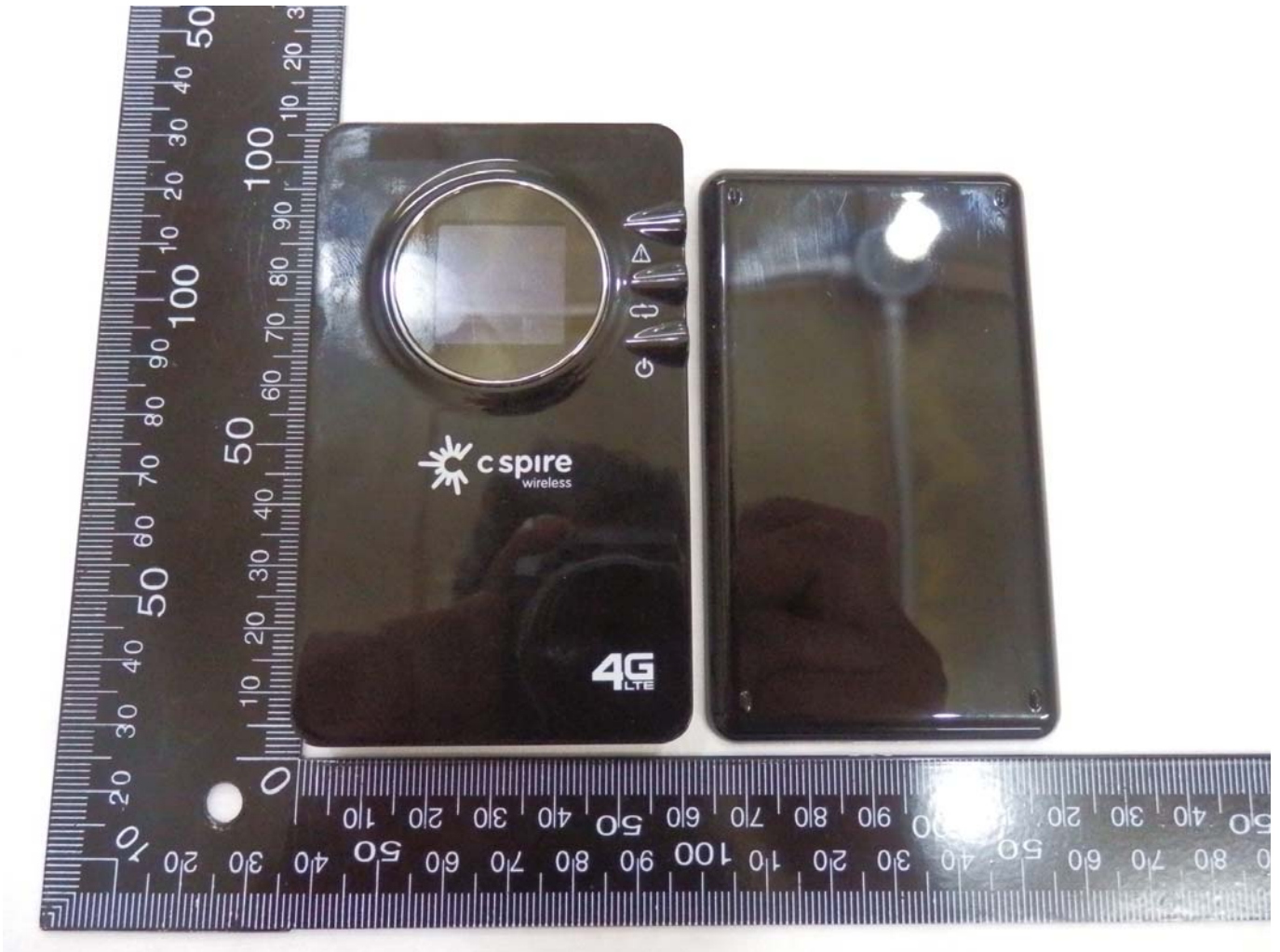


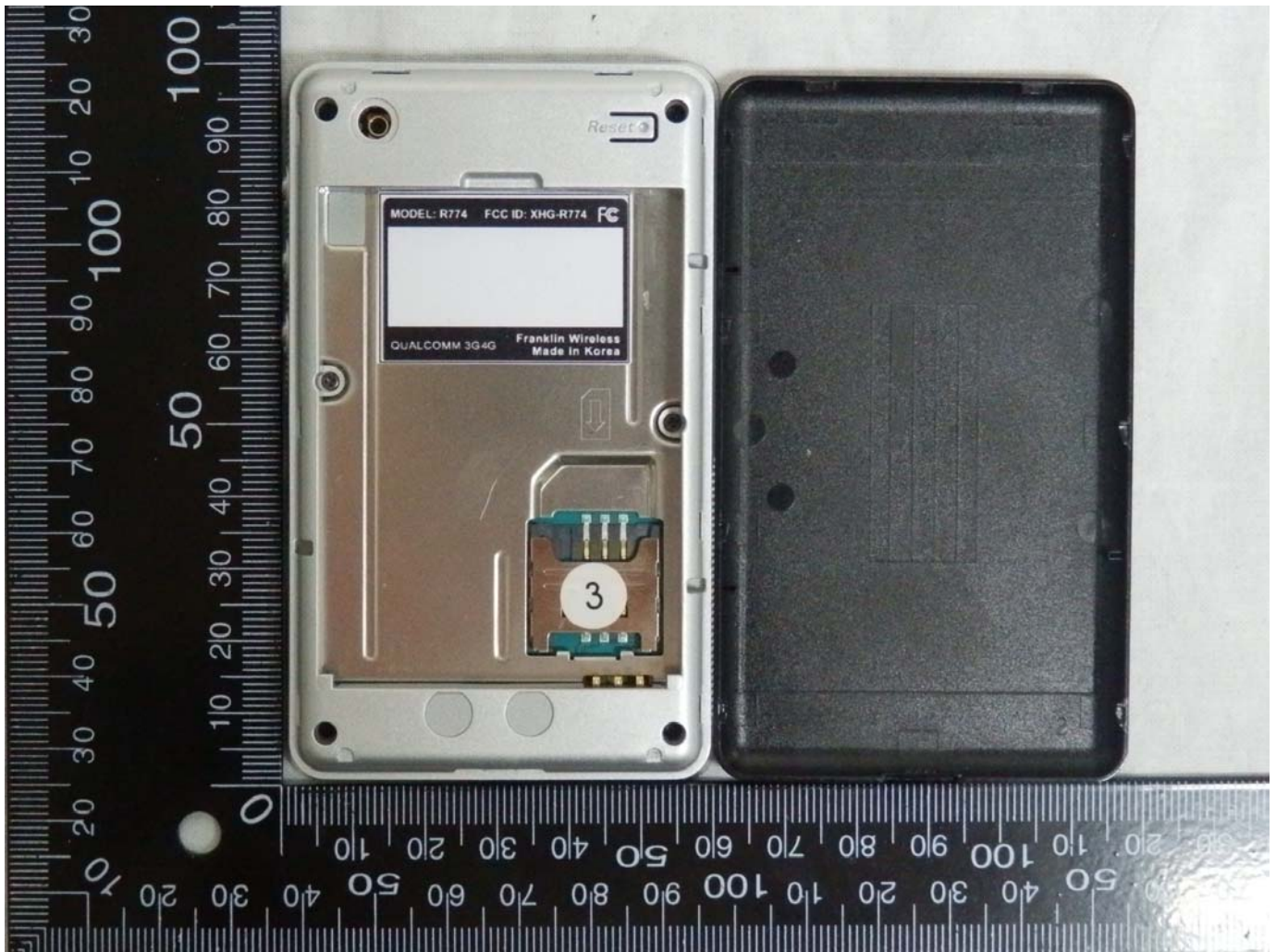
---

## Internal Photographs

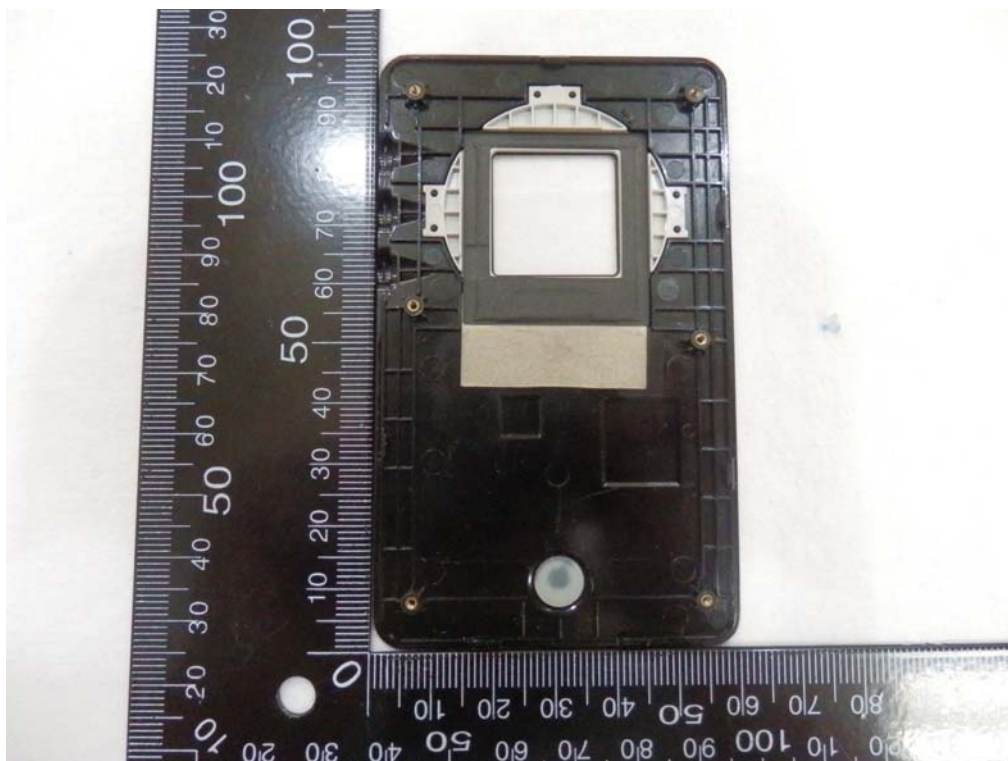
### 1. Front View



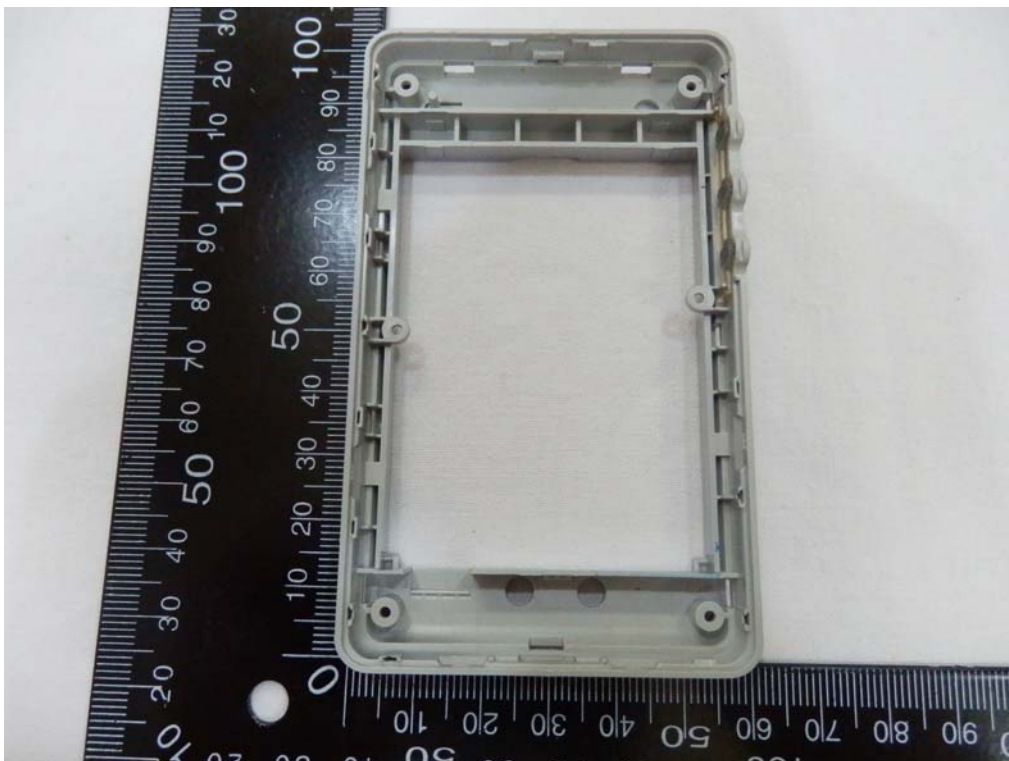
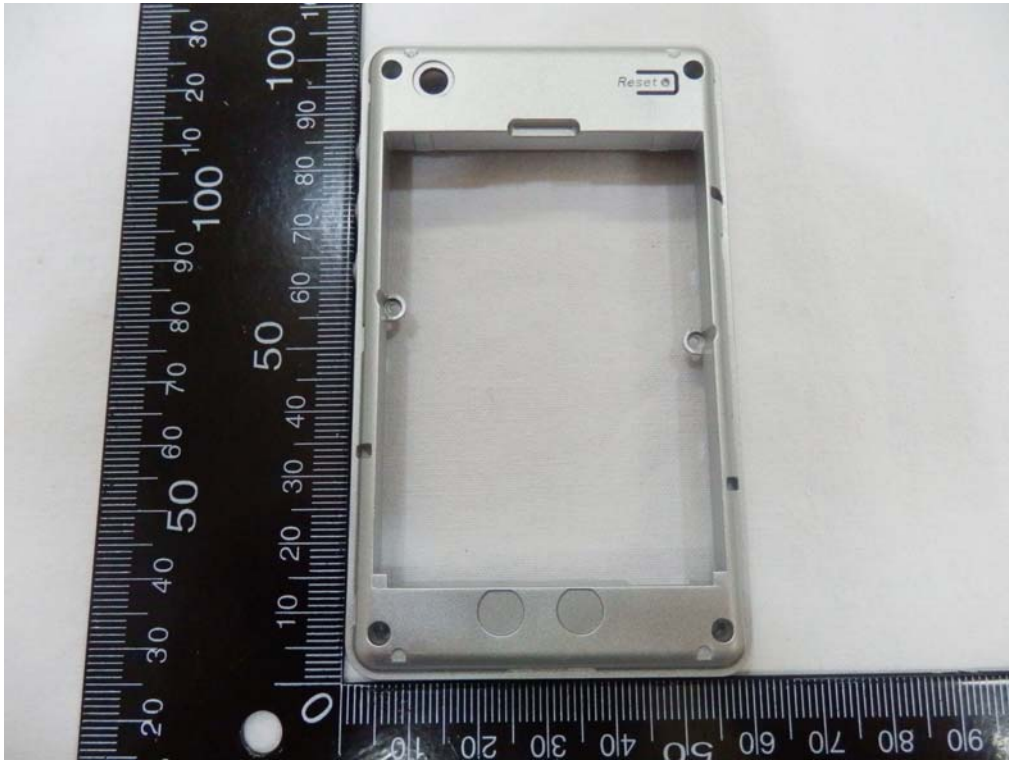
## 2.Rear View Front View



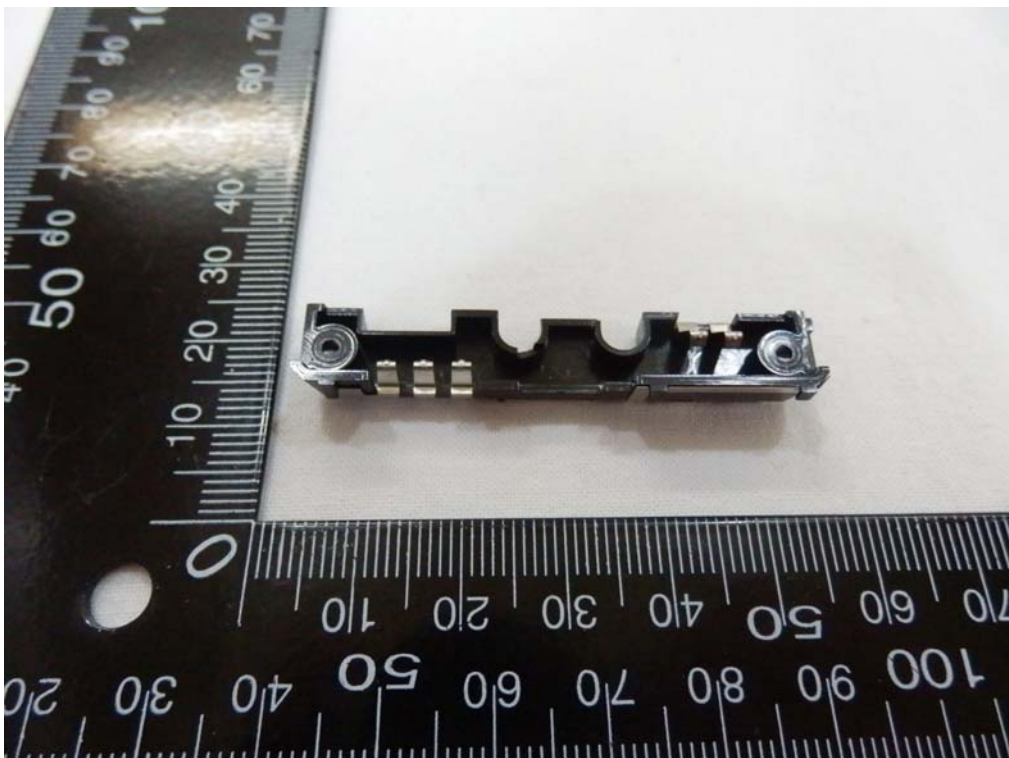
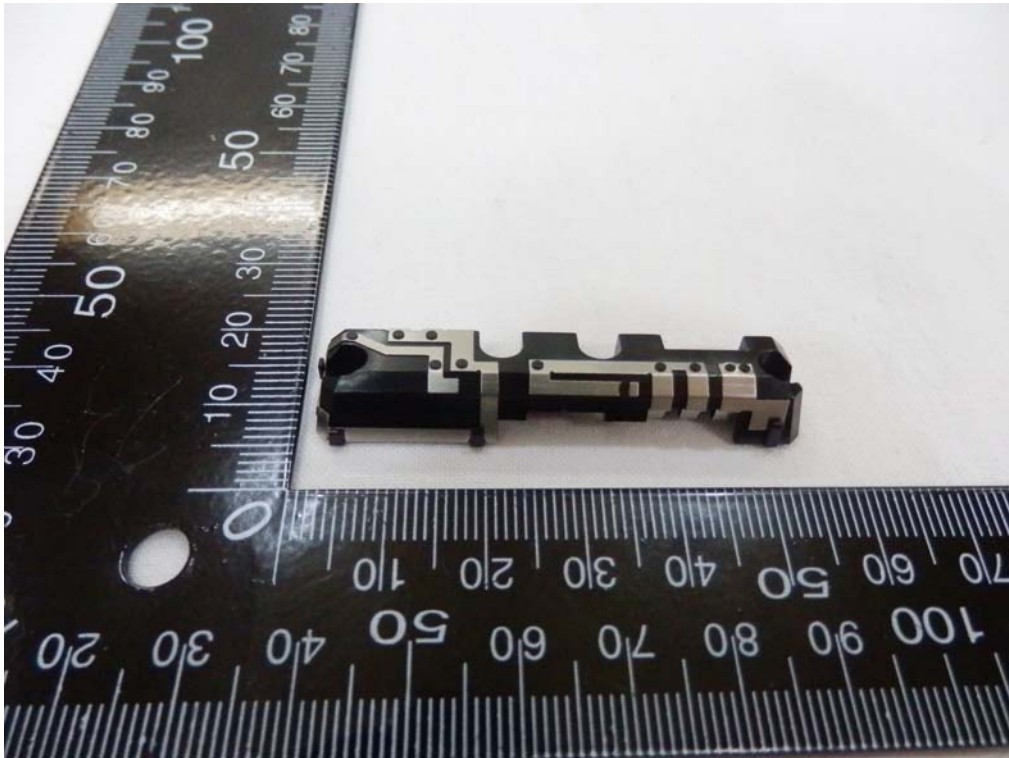
### 3. Component Board View : Front Cover Top & Bottom



#### 4. Component Board View : Rear Cover Top & Bottom



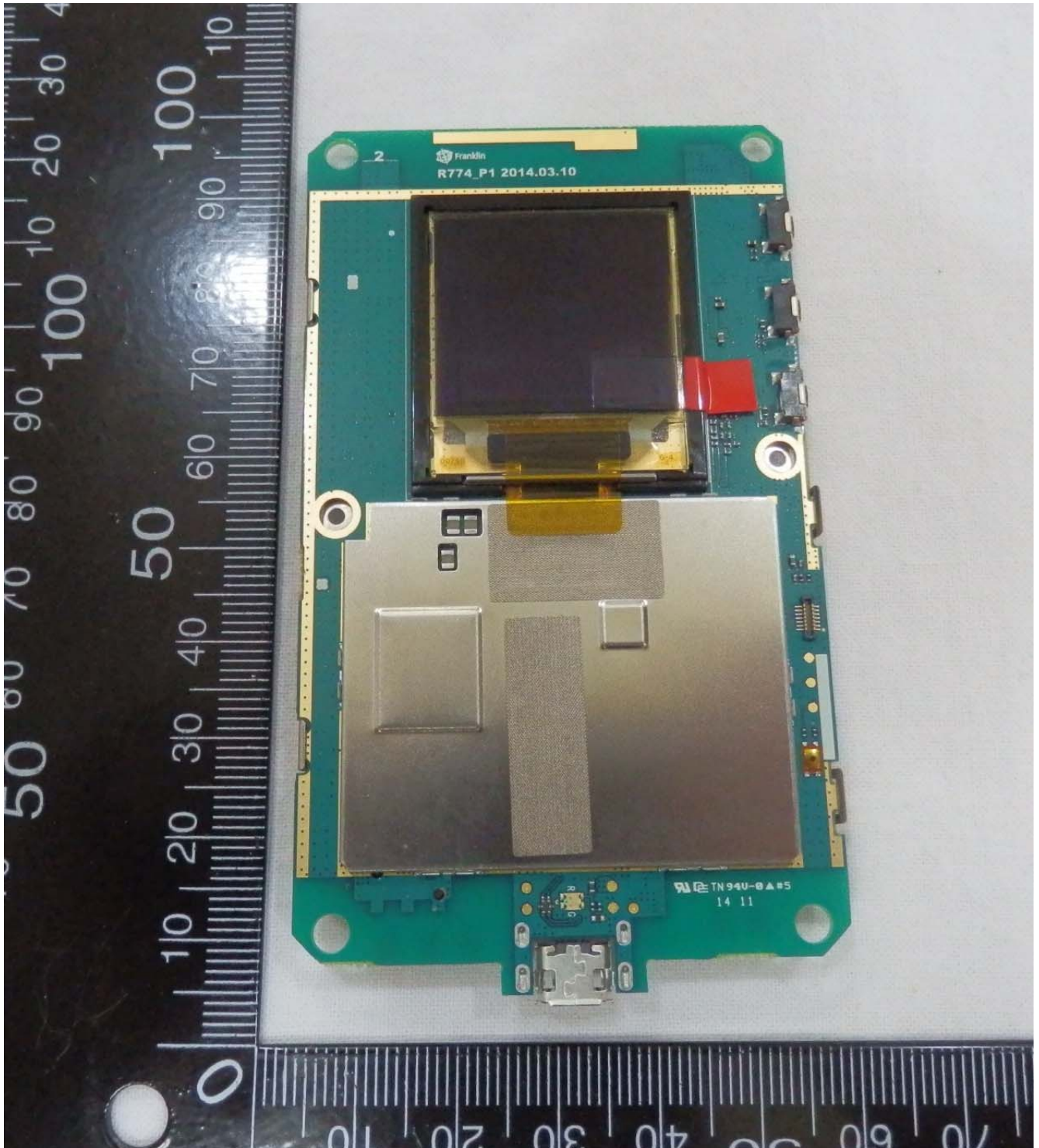
### 5. Component Board View : WIFI(2.4GHz) Antenna Top & Bottom



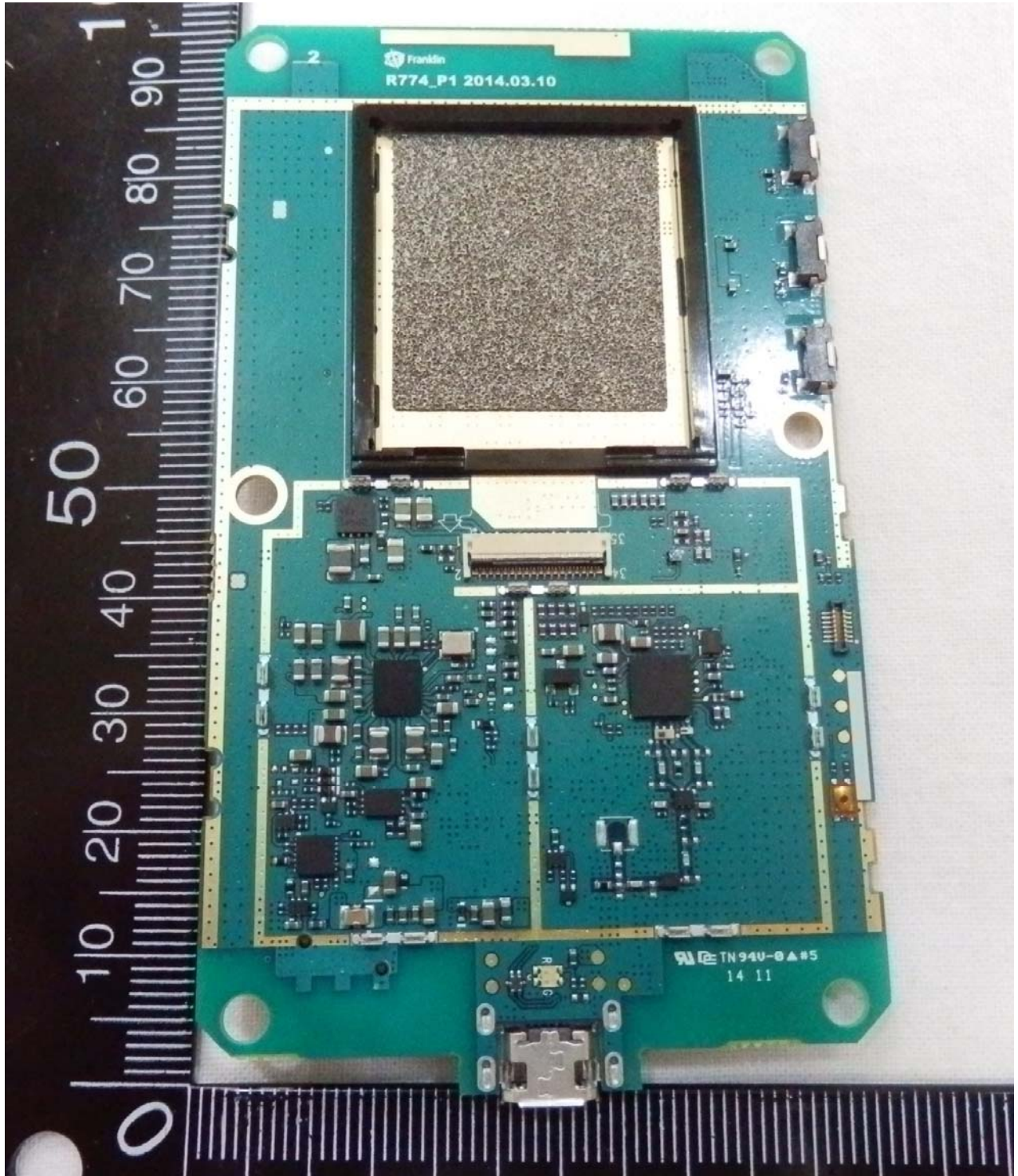
## 6. Component Board View : LTE/CDMA/PCS Antenna Top & Bottom



### 7. Component Board View : Main Board Top (1)

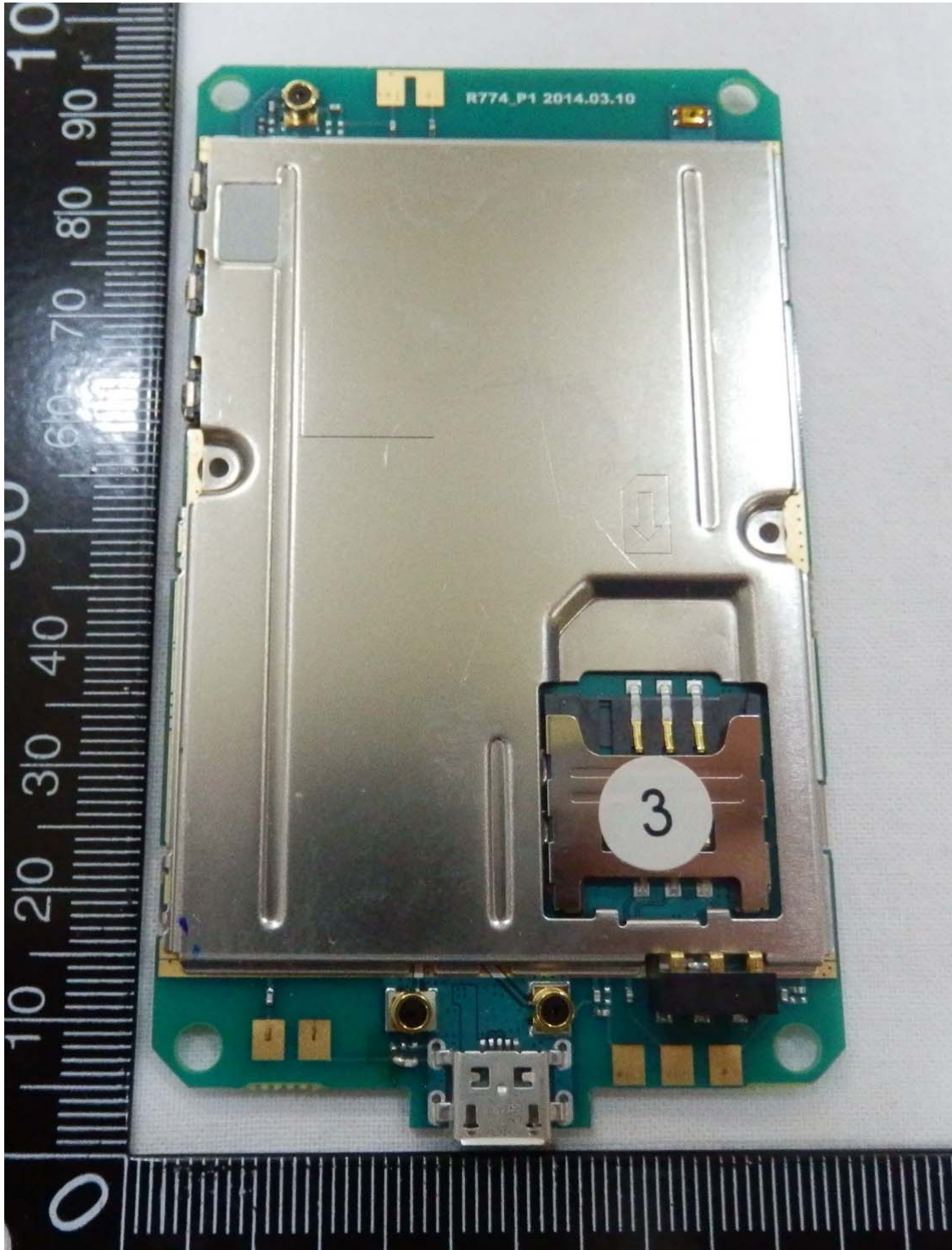


### 8. Component Board View : Main Board Top (2)

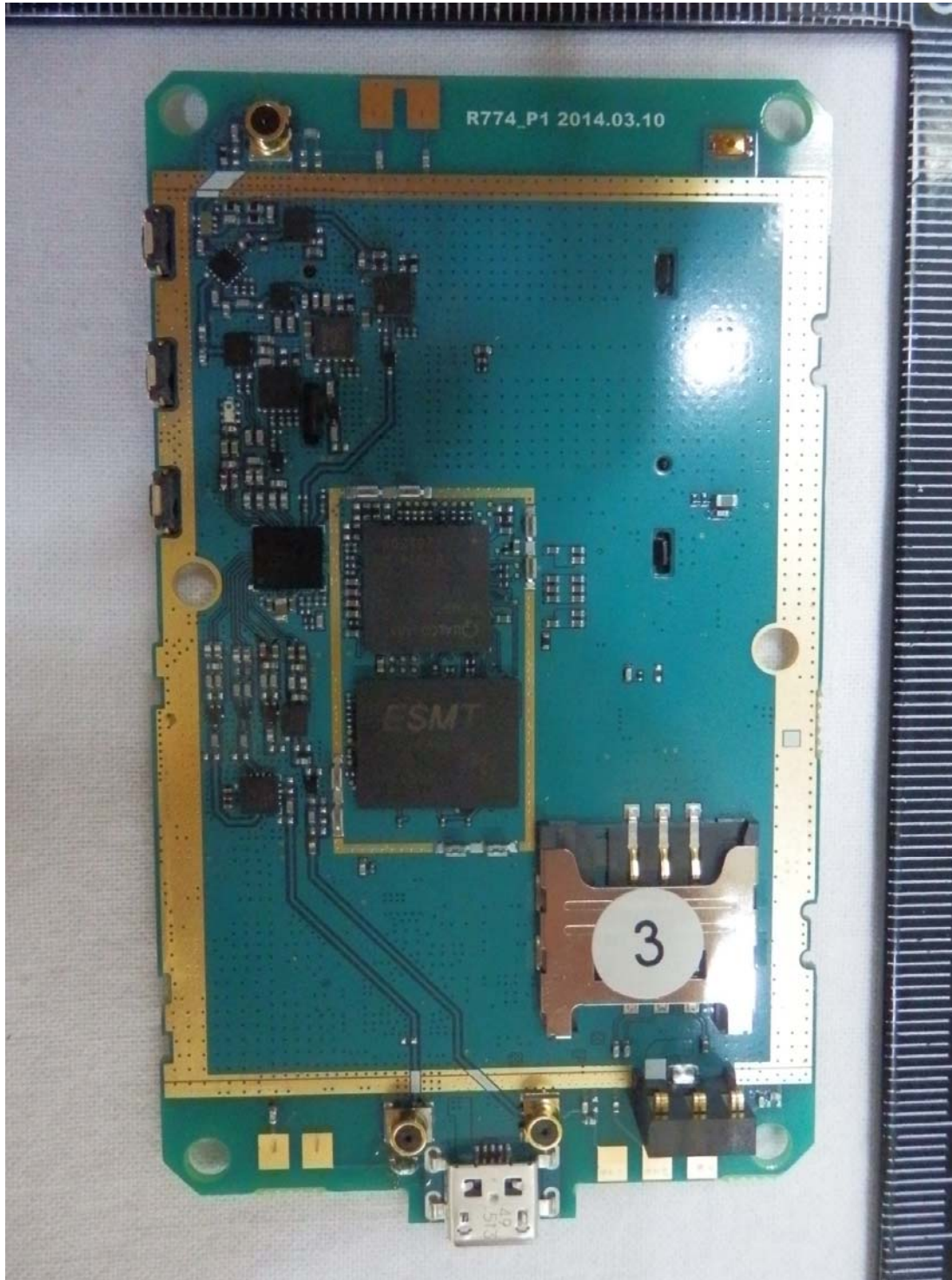




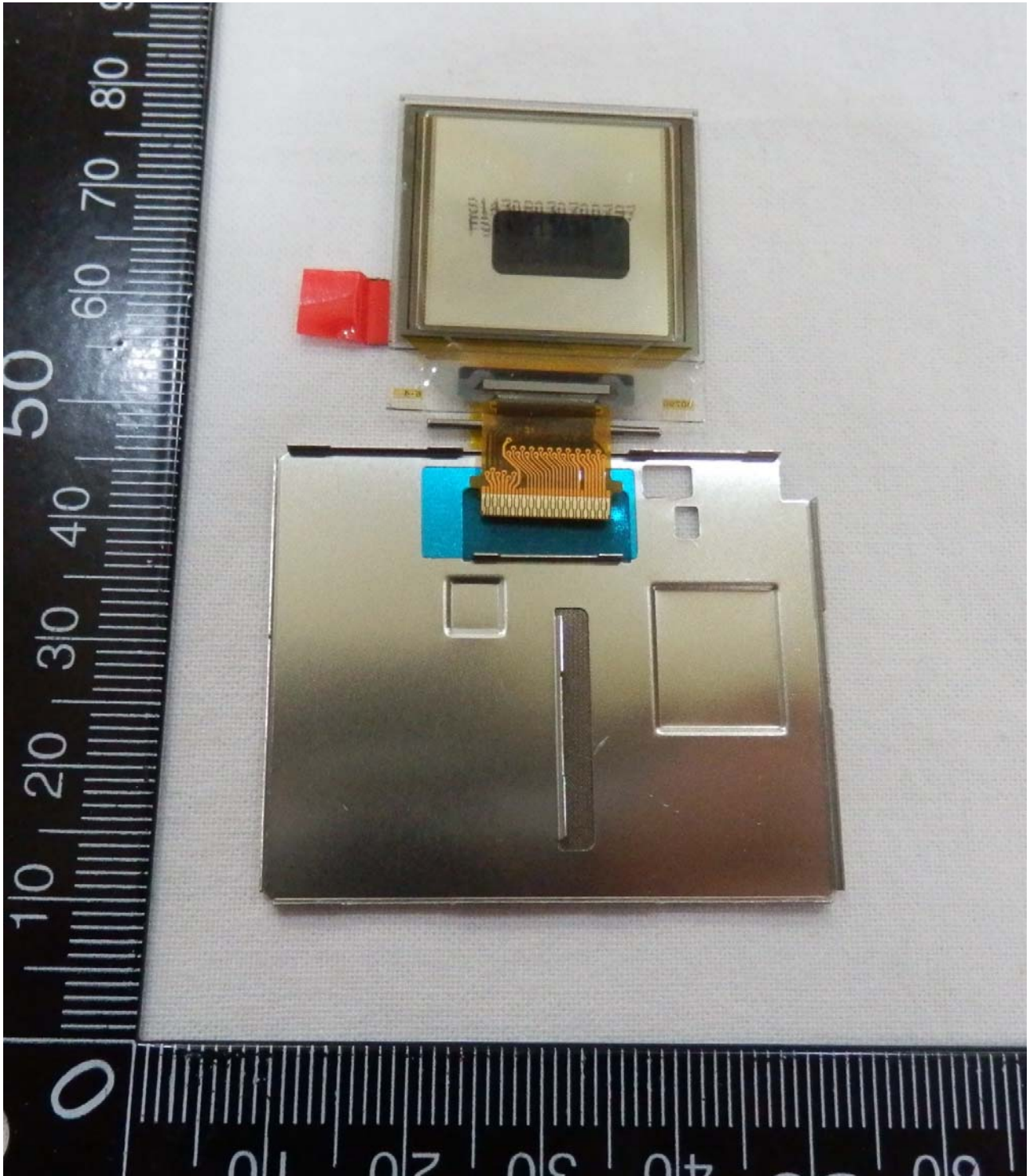
### 9. Component Board View : Main Board Bottom (1)



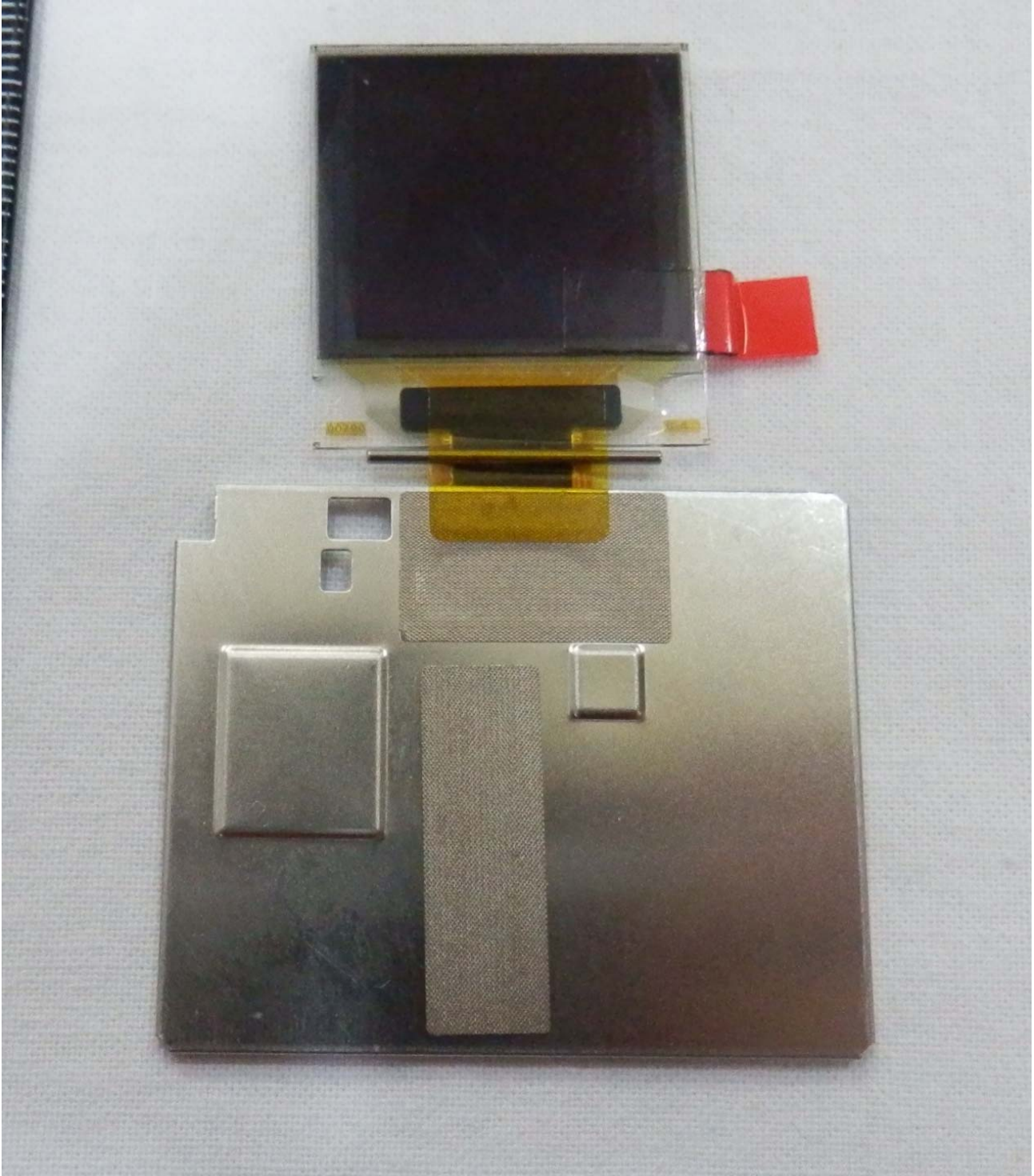
## 10. Component Board View : Main Board Bottom (2)



### 11. Component Board View : LCD Board Top



## 12. Component Board View : LCD Board Bottom



### 13. Component view : Battery

