

**FCC Part 22H****Frequency stability****n5 , Normal**

<b>Mode</b>	<b>Value (Hz)</b>	<b>Limit (Hz)</b>	<b>Result</b>
n5_5MHz_15kHz_836.5MHz_DFT-s-OFDM QPSK_RB25@0	4.73	-2091.25 ~ 2091.25	Pass
n5_10MHz_15kHz_836.5MHz_DFT-s-OFDM QPSK_RB50@0	9.9	-2091.25 ~ 2091.25	Pass
n5_15MHz_15kHz_836.5MHz_DFT-s-OFDM QPSK_RB75@0	-8.09	-2091.25 ~ 2091.25	Pass
n5_20MHz_15kHz_836.5MHz_DFT-s-OFDM QPSK_RB100@0	-0.63	-2091.25 ~ 2091.25	Pass

**n5 , T1/VN**

<b>Mode</b>	<b>Value (Hz)</b>	<b>Limit (Hz)</b>	<b>Result</b>
n5_5MHz_15kHz_836.5MHz_DFT-s-OFDM QPSK_RB25@0	5.54	-2091.25 ~ 2091.25	Pass
n5_10MHz_15kHz_836.5MHz_DFT-s-OFDM QPSK_RB50@0	0.93	-2091.25 ~ 2091.25	Pass
n5_15MHz_15kHz_836.5MHz_DFT-s-OFDM QPSK_RB75@0	-2.22	-2091.25 ~ 2091.25	Pass
n5_20MHz_15kHz_836.5MHz_DFT-s-OFDM QPSK_RB100@0	-2.84	-2091.25 ~ 2091.25	Pass

**n5 , T2/VN**

<b>Mode</b>	<b>Value (Hz)</b>	<b>Limit (Hz)</b>	<b>Result</b>
n5_5MHz_15kHz_836.5MHz_DFT-s-OFDM QPSK_RB25@0	5.39	-2091.25 ~ 2091.25	Pass
n5_10MHz_15kHz_836.5MHz_DFT-s-OFDM QPSK_RB50@0	-2.64	-2091.25 ~ 2091.25	Pass
n5_15MHz_15kHz_836.5MHz_DFT-s-OFDM QPSK_RB75@0	5.13	-2091.25 ~ 2091.25	Pass
n5_20MHz_15kHz_836.5MHz_DFT-s-OFDM QPSK_RB100@0	-18.25	-2091.25 ~ 2091.25	Pass

**n5 , T3/VN**

<b>Mode</b>	<b>Value (Hz)</b>	<b>Limit (Hz)</b>	<b>Result</b>
n5_5MHz_15kHz_836.5MHz_DFT-s-OFDM QPSK_RB25@0	5.88	-2091.25 ~ 2091.25	Pass

Mode	Value (Hz)	Limit (Hz)	Result
n5_10MHz_15kHz_836.5MHz_DFT-s-OFDM QPSK_RB50@0	-0.41	-2091.25 ~ 2091.25	Pass
n5_15MHz_15kHz_836.5MHz_DFT-s-OFDM QPSK_RB75@0	4.3	-2091.25 ~ 2091.25	Pass
n5_20MHz_15kHz_836.5MHz_DFT-s-OFDM QPSK_RB100@0	-3.04	-2091.25 ~ 2091.25	Pass

**n5 , T4/VN**

Mode	Value (Hz)	Limit (Hz)	Result
n5_5MHz_15kHz_836.5MHz_DFT-s-OFDM QPSK_RB25@0	-1.82	-2091.25 ~ 2091.25	Pass
n5_10MHz_15kHz_836.5MHz_DFT-s-OFDM QPSK_RB50@0	11.28	-2091.25 ~ 2091.25	Pass
n5_15MHz_15kHz_836.5MHz_DFT-s-OFDM QPSK_RB75@0	15.26	-2091.25 ~ 2091.25	Pass
n5_20MHz_15kHz_836.5MHz_DFT-s-OFDM QPSK_RB100@0	-15.26	-2091.25 ~ 2091.25	Pass

**n5 , T5/VN**

Mode	Value (Hz)	Limit (Hz)	Result
n5_5MHz_15kHz_836.5MHz_DFT-s-OFDM QPSK_RB25@0	-1.76	-2091.25 ~ 2091.25	Pass
n5_10MHz_15kHz_836.5MHz_DFT-s-OFDM QPSK_RB50@0	-7.65	-2091.25 ~ 2091.25	Pass
n5_15MHz_15kHz_836.5MHz_DFT-s-OFDM QPSK_RB75@0	-9.71	-2091.25 ~ 2091.25	Pass
n5_20MHz_15kHz_836.5MHz_DFT-s-OFDM QPSK_RB100@0	-10.05	-2091.25 ~ 2091.25	Pass

**n5 , T6/VN**

Mode	Value (Hz)	Limit (Hz)	Result
n5_5MHz_15kHz_836.5MHz_DFT-s-OFDM QPSK_RB25@0	7.11	-2091.25 ~ 2091.25	Pass
n5_10MHz_15kHz_836.5MHz_DFT-s-OFDM QPSK_RB50@0	2.1	-2091.25 ~ 2091.25	Pass
n5_15MHz_15kHz_836.5MHz_DFT-s-OFDM QPSK_RB75@0	8.4	-2091.25 ~ 2091.25	Pass
n5_20MHz_15kHz_836.5MHz_DFT-s-OFDM QPSK_RB100@0	-3.77	-2091.25 ~ 2091.25	Pass

**n5 , T7/VN**

Mode	Value (Hz)	Limit (Hz)	Result
n5_5MHz_15kHz_836.5MHz_DFT-s-OFDM QPSK_RB25@0	19.55	-2091.25 ~ 2091.25	Pass
n5_10MHz_15kHz_836.5MHz_DFT-s-OFDM QPSK_RB50@0	10.22	-2091.25 ~ 2091.25	Pass
n5_15MHz_15kHz_836.5MHz_DFT-s-OFDM QPSK_RB75@0	-0.15	-2091.25 ~ 2091.25	Pass
n5_20MHz_15kHz_836.5MHz_DFT-s-OFDM QPSK_RB100@0	-5.8	-2091.25 ~ 2091.25	Pass

**n5 , T8/VN**

Mode	Value (Hz)	Limit (Hz)	Result
n5_5MHz_15kHz_836.5MHz_DFT-s-OFDM QPSK_RB25@0	-5.13	-2091.25 ~ 2091.25	Pass
n5_10MHz_15kHz_836.5MHz_DFT-s-OFDM QPSK_RB50@0	-3.33	-2091.25 ~ 2091.25	Pass
n5_15MHz_15kHz_836.5MHz_DFT-s-OFDM QPSK_RB75@0	5.19	-2091.25 ~ 2091.25	Pass
n5_20MHz_15kHz_836.5MHz_DFT-s-OFDM QPSK_RB100@0	4.87	-2091.25 ~ 2091.25	Pass

**n5 , TN/VH**

Mode	Value (Hz)	Limit (Hz)	Result
n5_5MHz_15kHz_836.5MHz_DFT-s-OFDM QPSK_RB25@0	-6.77	-2091.25 ~ 2091.25	Pass
n5_10MHz_15kHz_836.5MHz_DFT-s-OFDM QPSK_RB50@0	-2.73	-2091.25 ~ 2091.25	Pass
n5_15MHz_15kHz_836.5MHz_DFT-s-OFDM QPSK_RB75@0	-2.62	-2091.25 ~ 2091.25	Pass
n5_20MHz_15kHz_836.5MHz_DFT-s-OFDM QPSK_RB100@0	6.5	-2091.25 ~ 2091.25	Pass

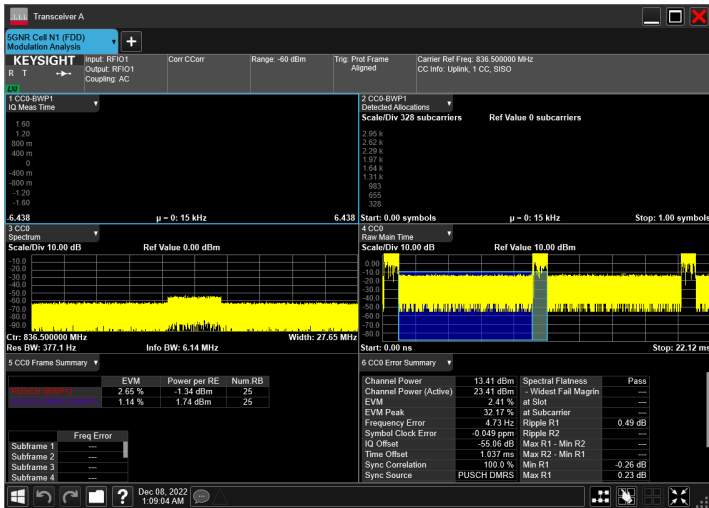
**n5 , TN/VL**

Mode	Value (Hz)	Limit (Hz)	Result
n5_5MHz_15kHz_836.5MHz_DFT-s-OFDM QPSK_RB25@0	0.89	-2091.25 ~ 2091.25	Pass
n5_10MHz_15kHz_836.5MHz_DFT-s-OFDM QPSK_RB50@0	-1.93	-2091.25 ~ 2091.25	Pass
n5_15MHz_15kHz_836.5MHz_DFT-s-OFDM QPSK_RB75@0	0.46	-2091.25 ~ 2091.25	Pass

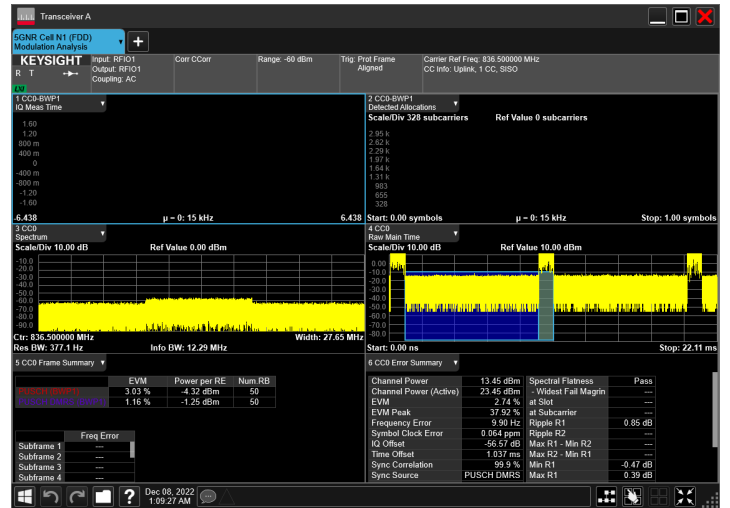
<b>Mode</b>	<b>Value (Hz)</b>	<b>Limit (Hz)</b>	<b>Result</b>
n5_20MHz_15kHz_836.5MHz_DFT-s-OFDM QPSK_RB100@0	-1.99	-2091.25 ~ 2091.25	Pass

n5 , Normal

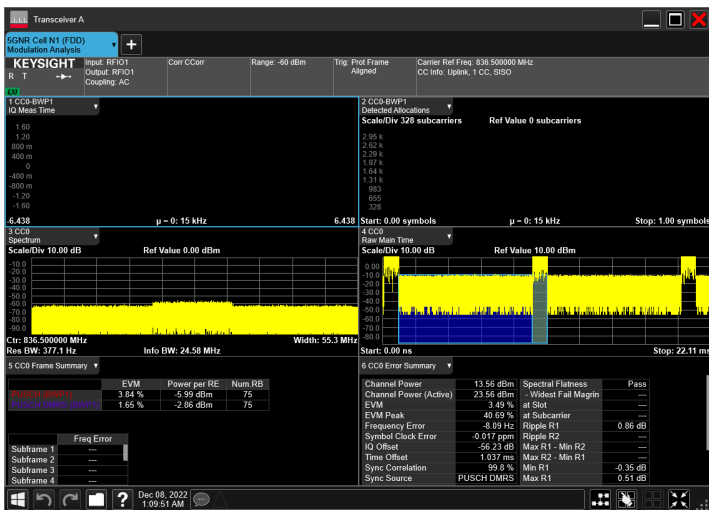
n5\_5MHz\_15kHz\_836.5MHz\_DFT-s-OFDM QPSK\_RB25@0



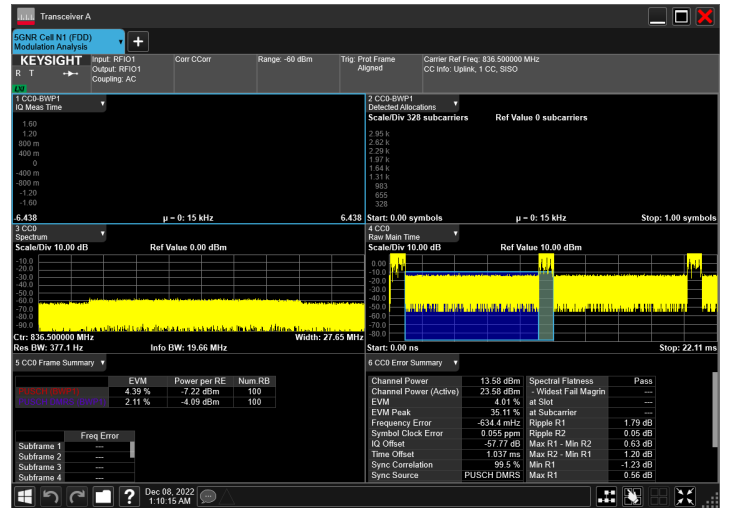
n5\_10MHz\_15kHz\_836.5MHz\_DFT-s-OFDM QPSK\_RB50@0



n5\_15MHz\_15kHz\_836.5MHz\_DFT-s-OFDM QPSK\_RB75@0

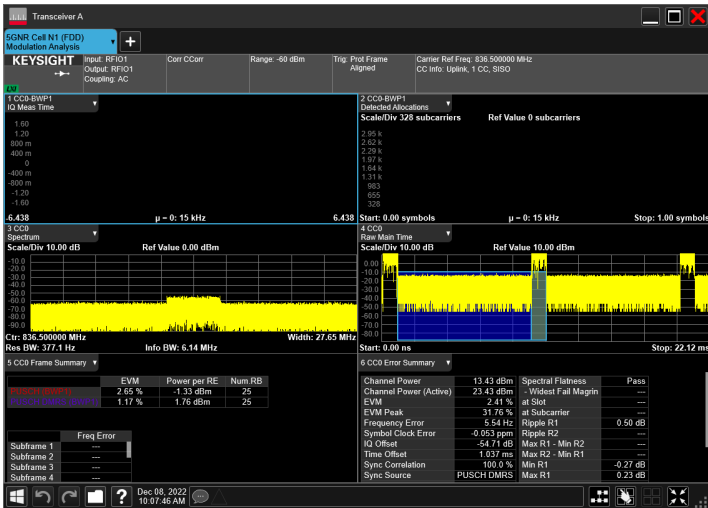


n5\_20MHz\_15kHz\_836.5MHz\_DFT-s-OFDM QPSK\_RB100@0

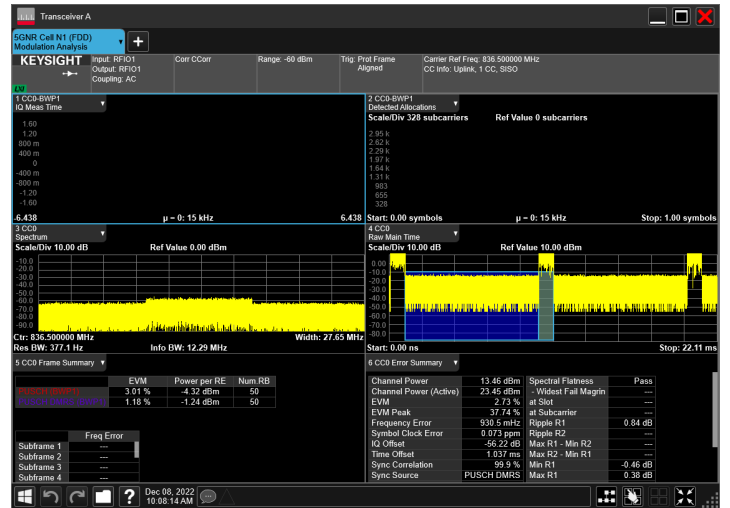


n5, T1/VN

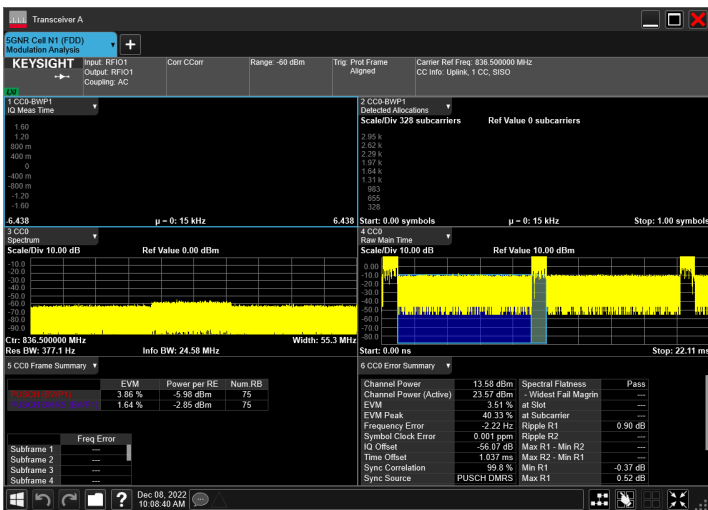
n5\_5MHz\_15kHz\_836.5MHz\_DFT-s-OFDM QPSK\_RB25@0



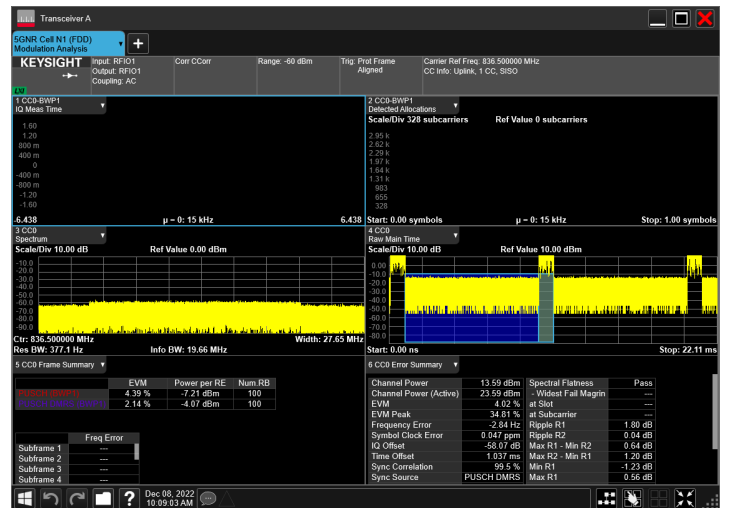
n5\_10MHz\_15kHz\_836.5MHz\_DFT-s-OFDM QPSK\_RB50@0



n5\_15MHz\_15kHz\_836.5MHz\_DFT-s-OFDM QPSK\_RB75@0

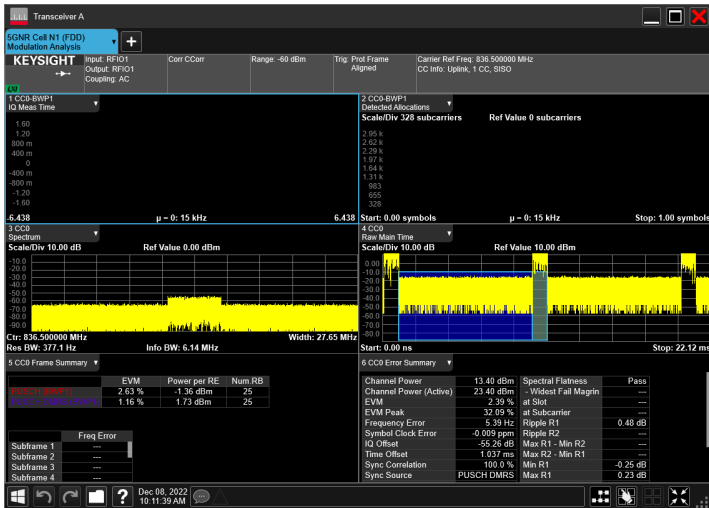


n5\_20MHz\_15kHz\_836.5MHz\_DFT-s-OFDM QPSK\_RB100@0

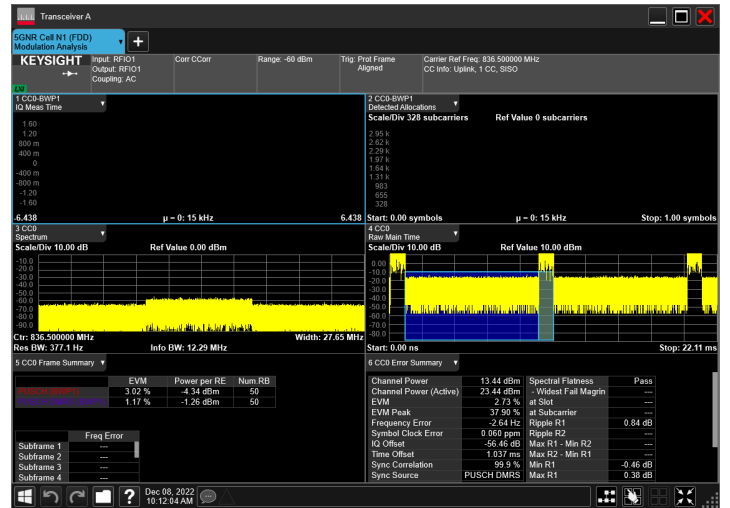


n5 , T2/VN

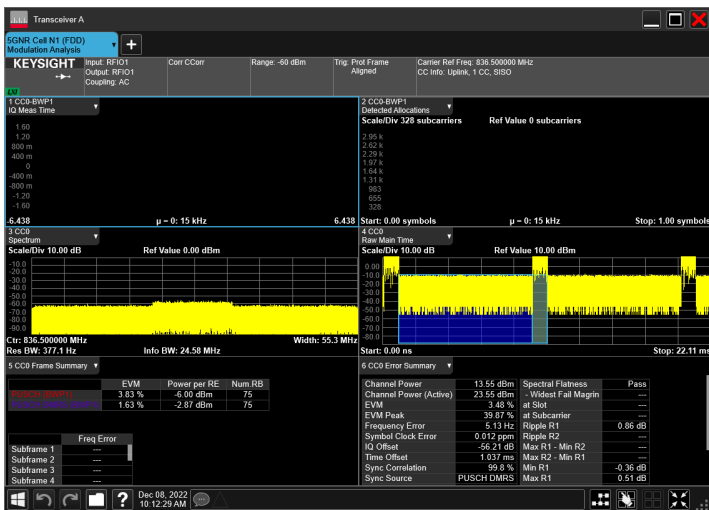
n5\_5MHz\_15kHz\_836.5MHz\_DFT-s-OFDM QPSK\_RB25@0



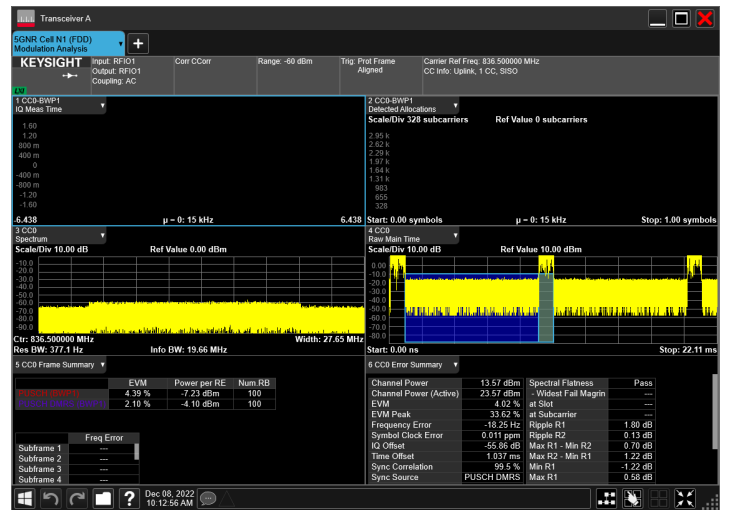
n5\_10MHz\_15kHz\_836.5MHz\_DFT-s-OFDM QPSK\_RB50@0



n5\_15MHz\_15kHz\_836.5MHz\_DFT-s-OFDM QPSK\_RB75@0

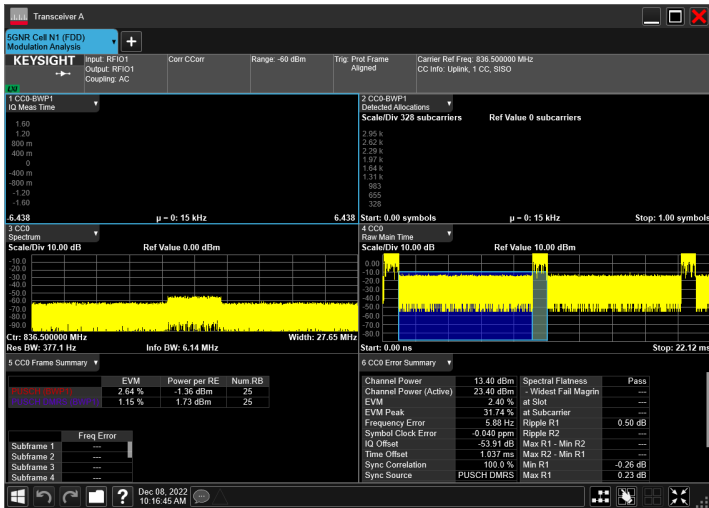


n5\_20MHz\_15kHz\_836.5MHz\_DFT-s-OFDM QPSK\_RB100@0

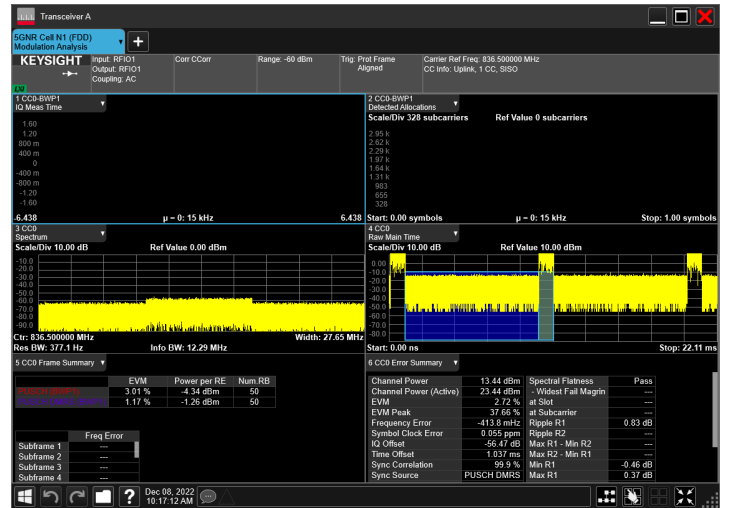


n5 , T3/VN

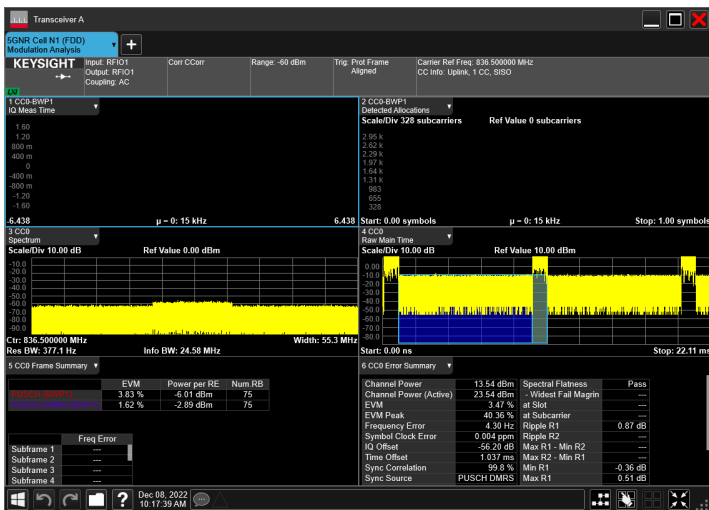
n5\_5MHz\_15kHz\_836.5MHz\_DFT-s-OFDM QPSK\_RB25@0



n5\_10MHz\_15kHz\_836.5MHz\_DFT-s-OFDM QPSK\_RB50@0



n5\_15MHz\_15kHz\_836.5MHz\_DFT-s-OFDM QPSK\_RB75@0



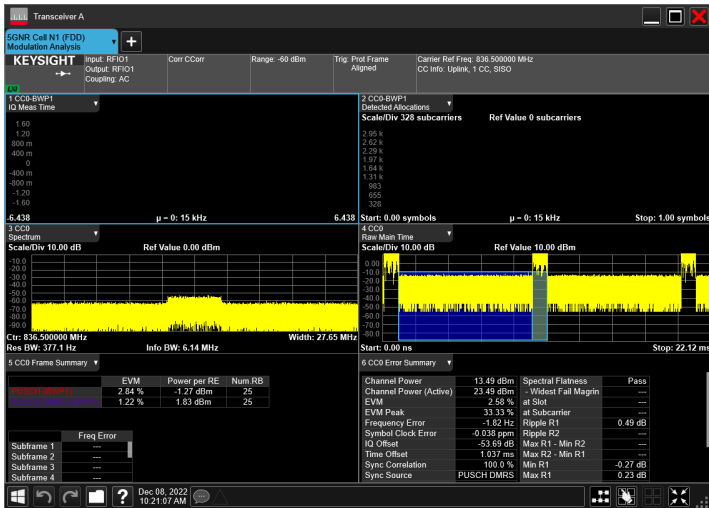
n5\_20MHz\_15kHz\_836.5MHz\_DFT-s-OFDM QPSK\_RB100@0



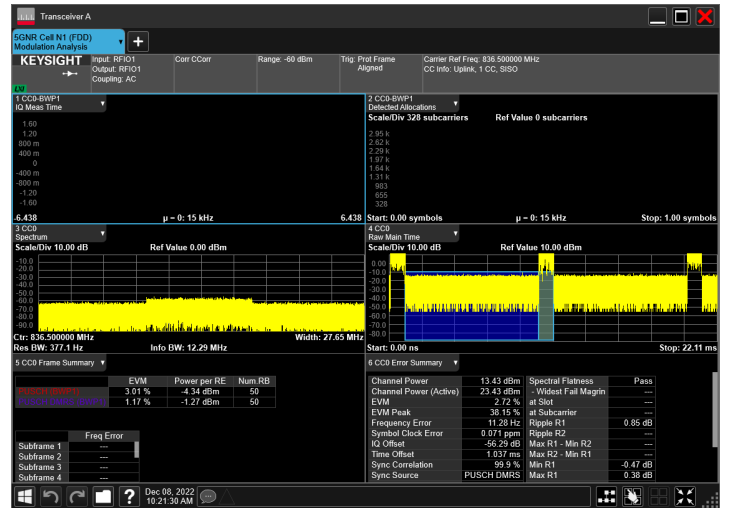


n5 , T4/VN

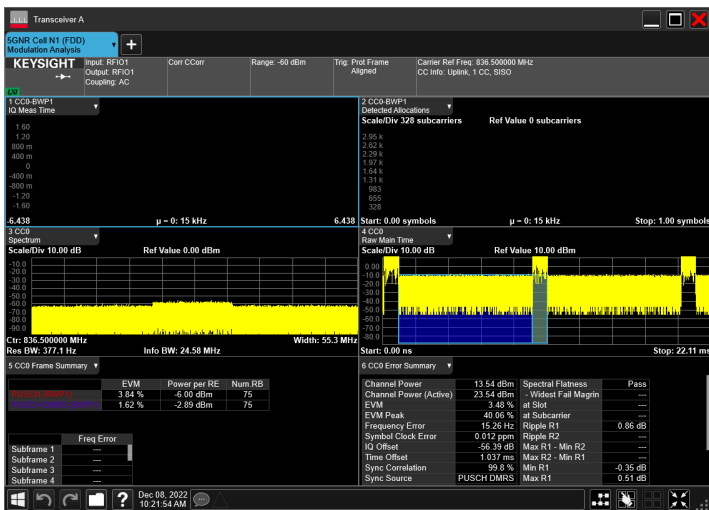
n5\_5MHz\_15kHz\_836.5MHz\_DFT-s-OFDM QPSK\_RB25@0



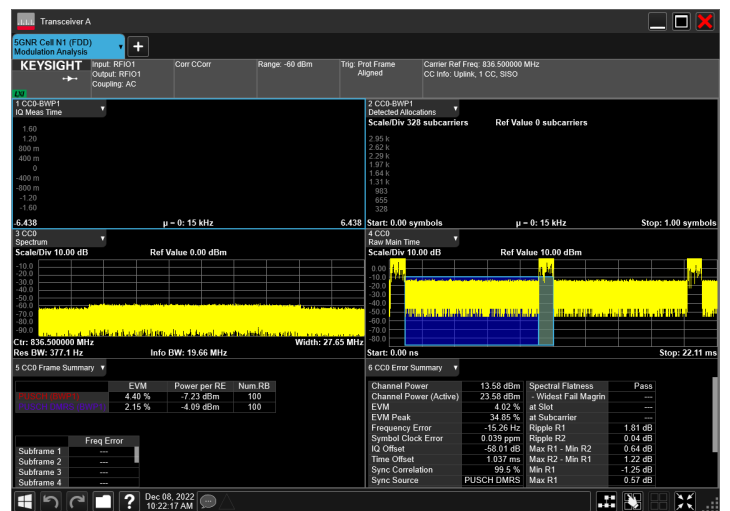
n5\_10MHz\_15kHz\_836.5MHz\_DFT-s-OFDM QPSK\_RB50@0



n5\_15MHz\_15kHz\_836.5MHz\_DFT-s-OFDM QPSK\_RB75@0

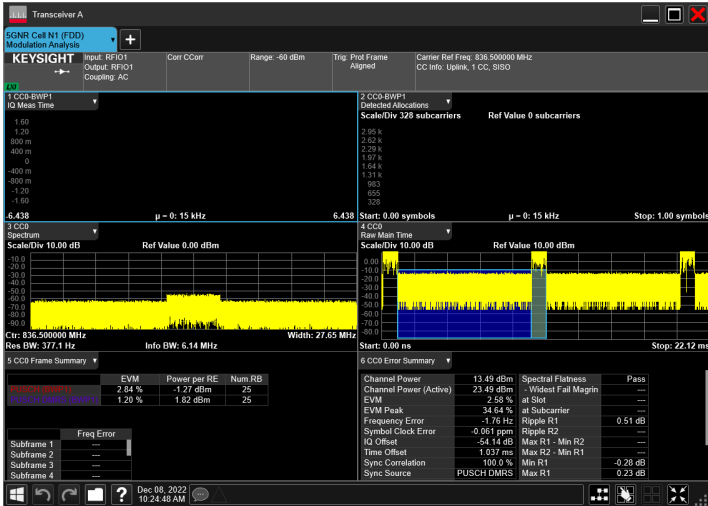


n5\_20MHz\_15kHz\_836.5MHz\_DFT-s-OFDM QPSK\_RB100@0

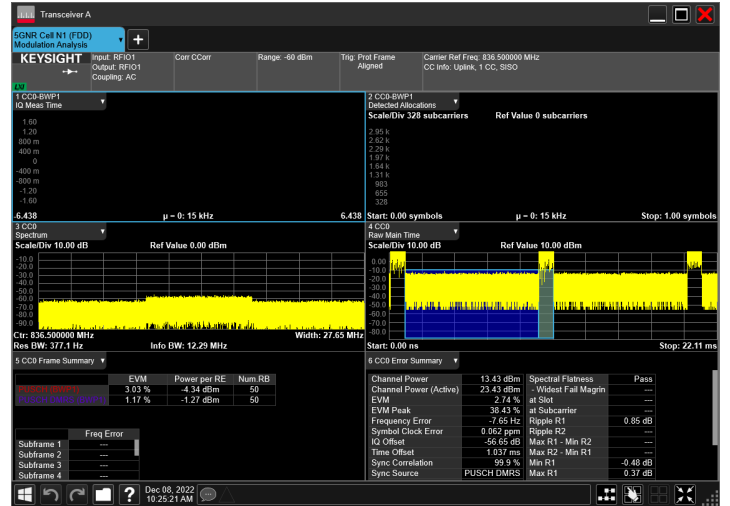


n5 , T5/VN

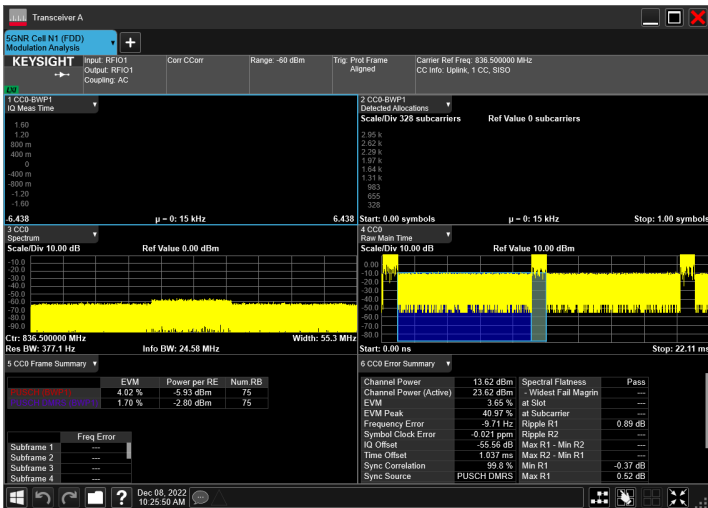
n5\_5MHz\_15kHz\_836.5MHz\_DFT-s-OFDM QPSK\_RB25@0



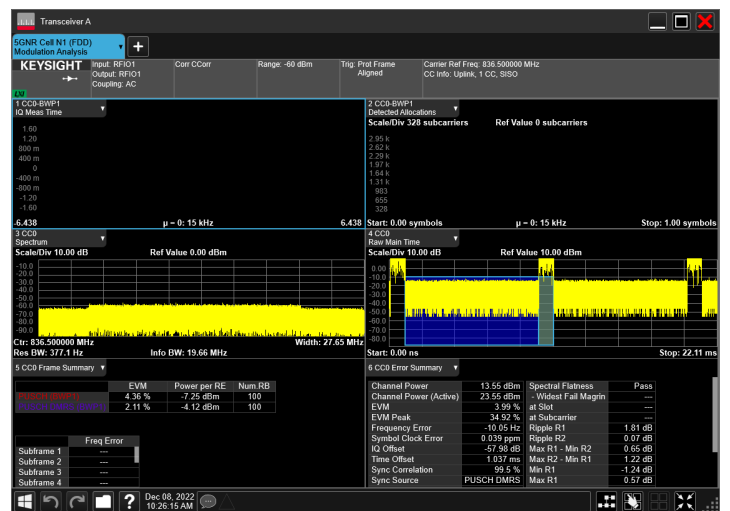
n5\_10MHz\_15kHz\_836.5MHz\_DFT-s-OFDM QPSK\_RB50@0



n5\_15MHz\_15kHz\_836.5MHz\_DFT-s-OFDM QPSK\_RB75@0

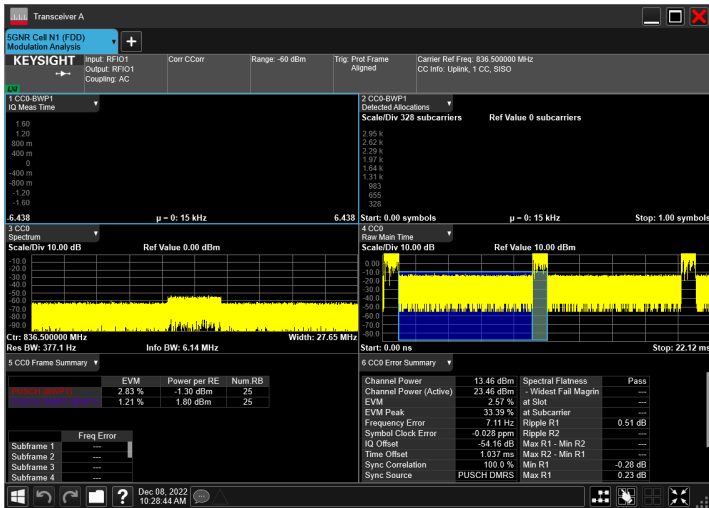


n5\_20MHz\_15kHz\_836.5MHz\_DFT-s-OFDM QPSK\_RB100@0

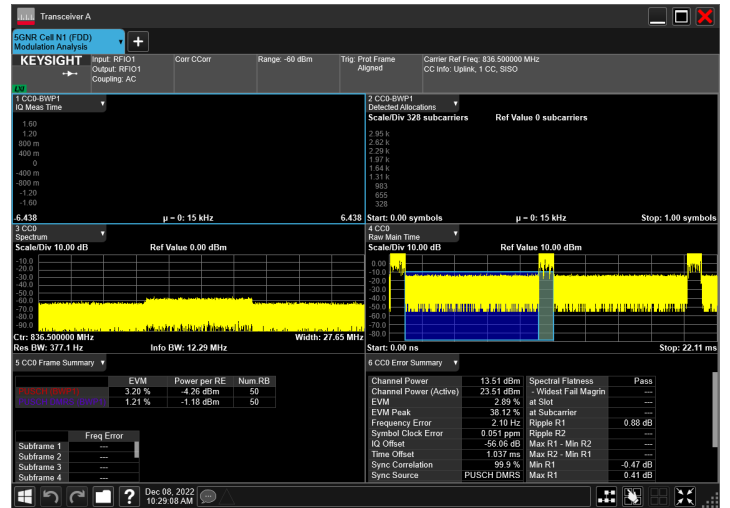


n5 , T6/VN

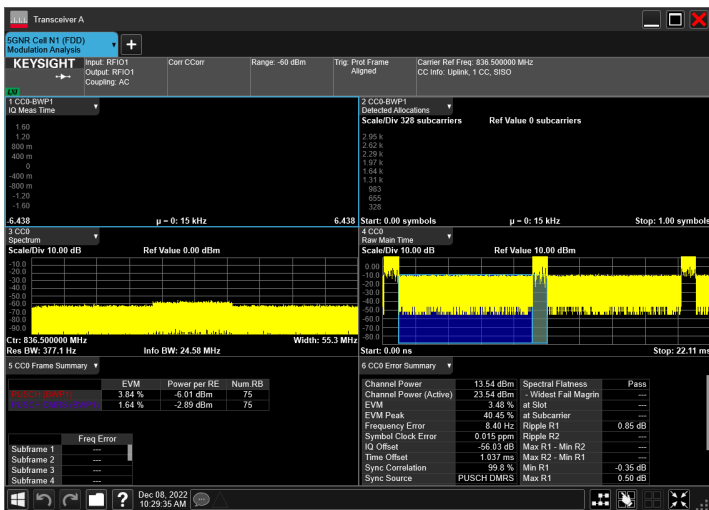
n5\_5MHz\_15kHz\_836.5MHz\_DFT-s-OFDM QPSK\_RB25@0



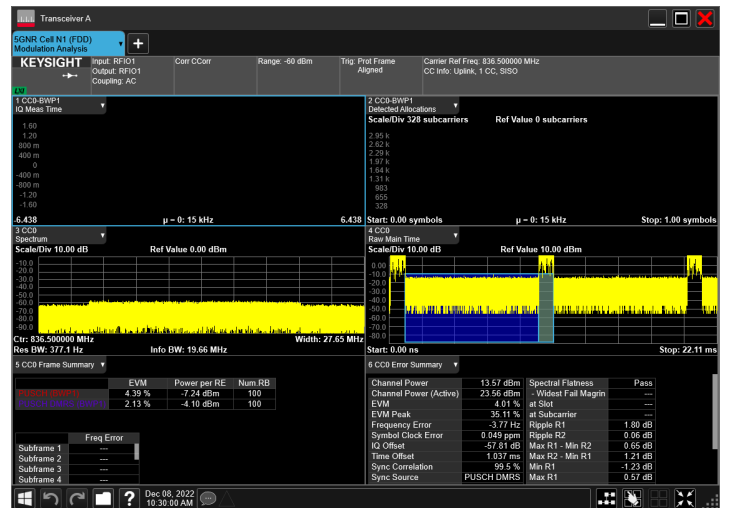
n5\_10MHz\_15kHz\_836.5MHz\_DFT-s-OFDM QPSK\_RB50@0



n5\_15MHz\_15kHz\_836.5MHz\_DFT-s-OFDM QPSK\_RB75@0

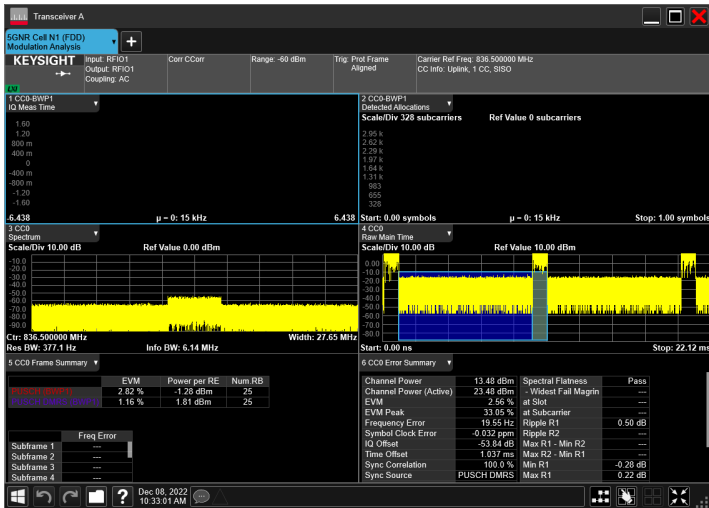


n5\_20MHz\_15kHz\_836.5MHz\_DFT-s-OFDM QPSK\_RB100@0

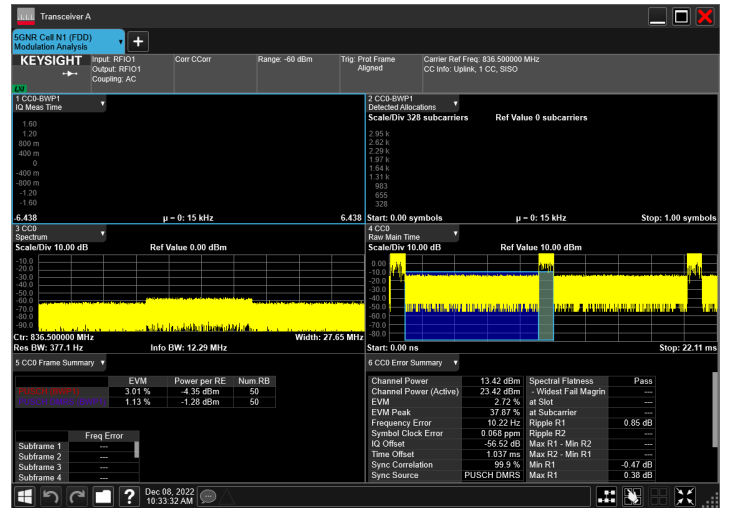


n5 , T7/VN

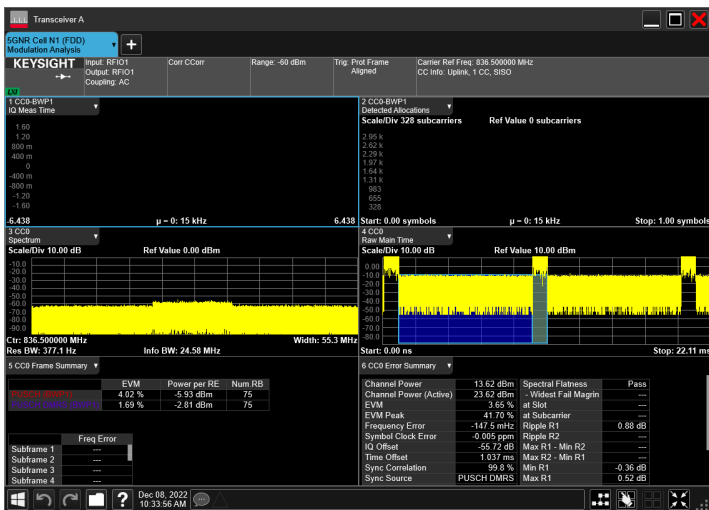
n5\_5MHz\_15kHz\_836.5MHz\_DFT-s-OFDM QPSK\_RB25@0



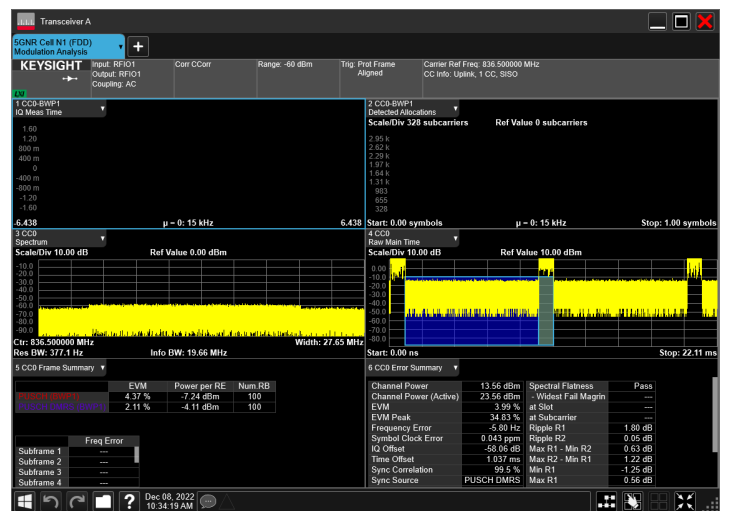
n5\_10MHz\_15kHz\_836.5MHz\_DFT-s-OFDM QPSK\_RB50@0



n5\_15MHz\_15kHz\_836.5MHz\_DFT-s-OFDM QPSK\_RB75@0

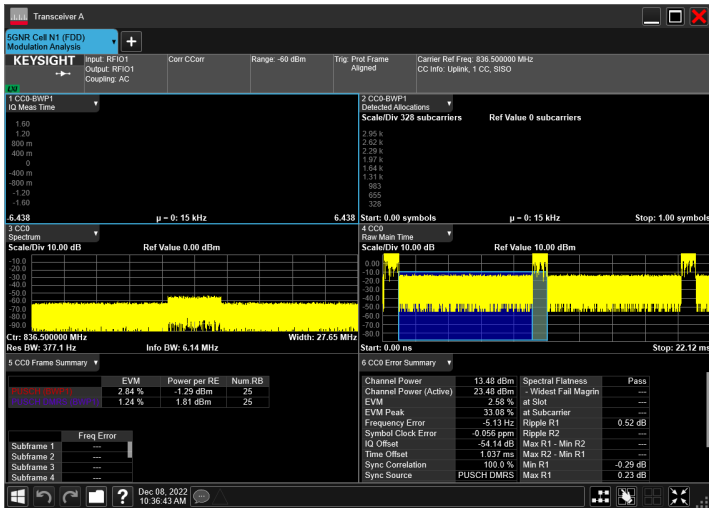


n5\_20MHz\_15kHz\_836.5MHz\_DFT-s-OFDM QPSK\_RB100@0

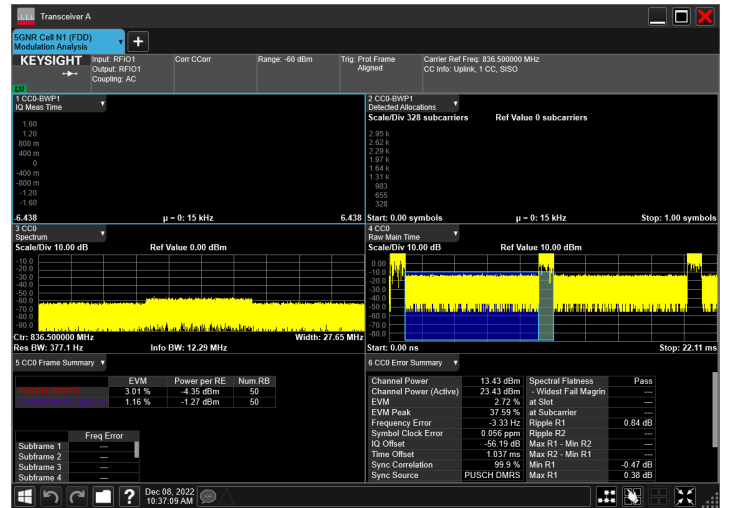


n5 , T8/VN

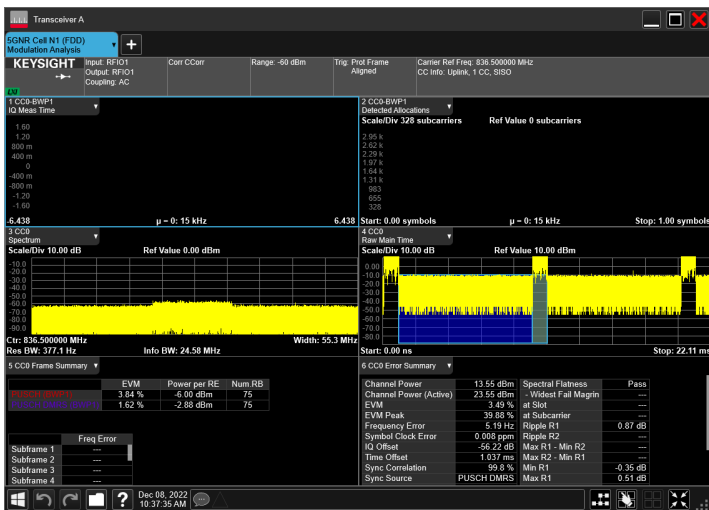
n5\_5MHz\_15kHz\_836.5MHz\_DFT-s-OFDM QPSK\_RB25@0



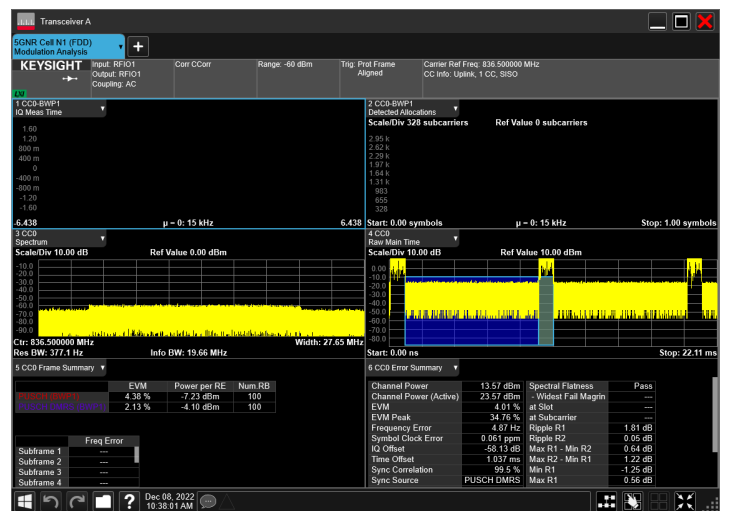
n5\_10MHz\_15kHz\_836.5MHz\_DFT-s-OFDM QPSK\_RB50@0



n5\_15MHz\_15kHz\_836.5MHz\_DFT-s-OFDM QPSK\_RB75@0

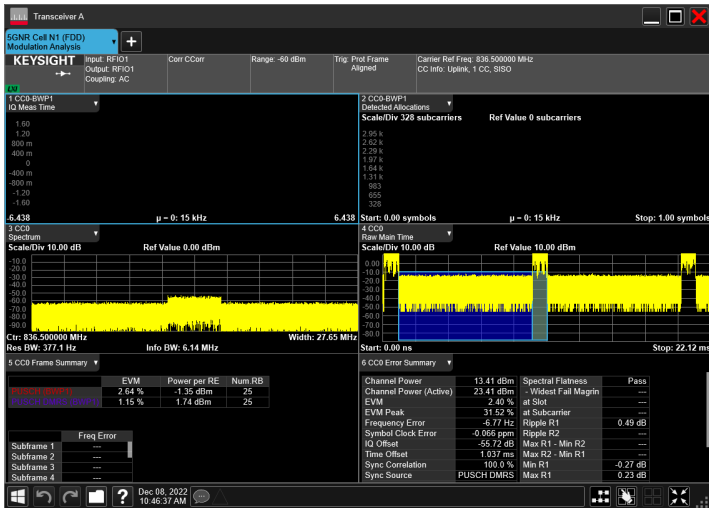


n5\_20MHz\_15kHz\_836.5MHz\_DFT-s-OFDM QPSK\_RB100@0

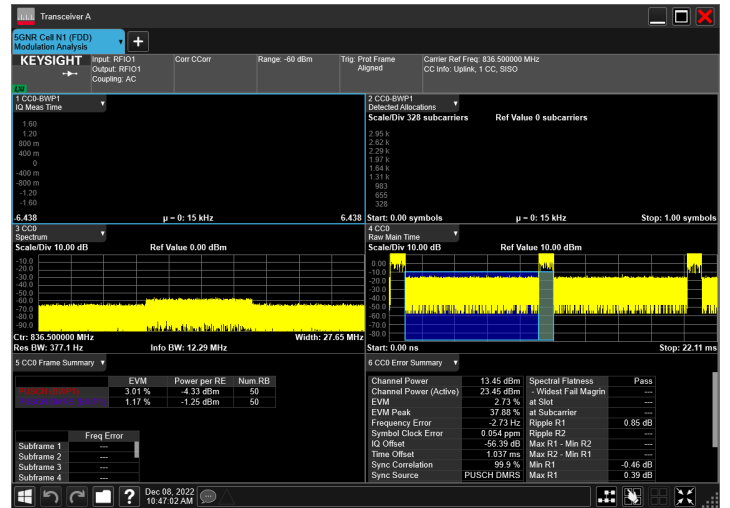


n5 , TN/VH

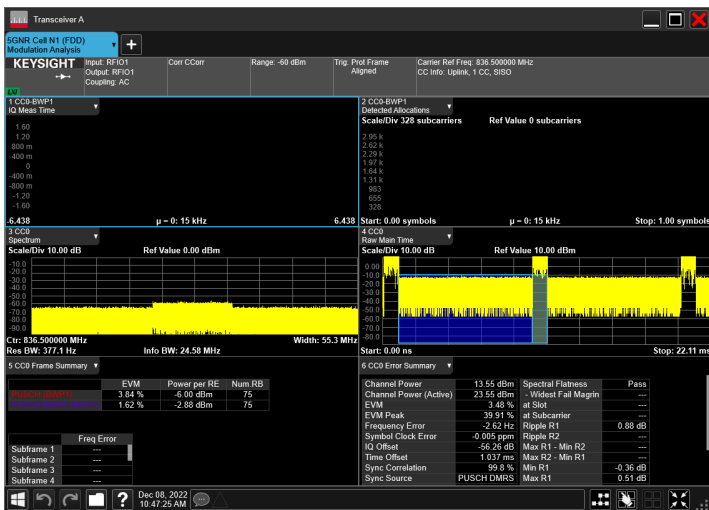
n5\_5MHz\_15kHz\_836.5MHz\_DFT-s-OFDM QPSK\_RB25@0



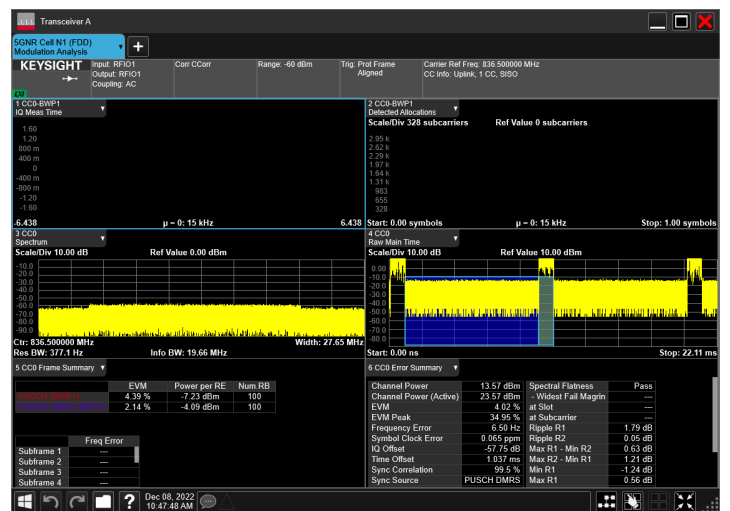
n5\_10MHz\_15kHz\_836.5MHz\_DFT-s-OFDM QPSK\_RB50@0



n5\_15MHz\_15kHz\_836.5MHz\_DFT-s-OFDM QPSK\_RB75@0

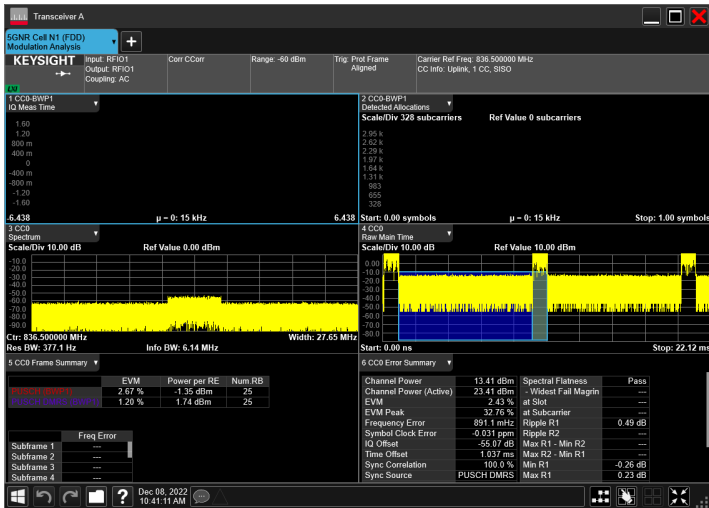


n5\_20MHz\_15kHz\_836.5MHz\_DFT-s-OFDM QPSK\_RB100@0

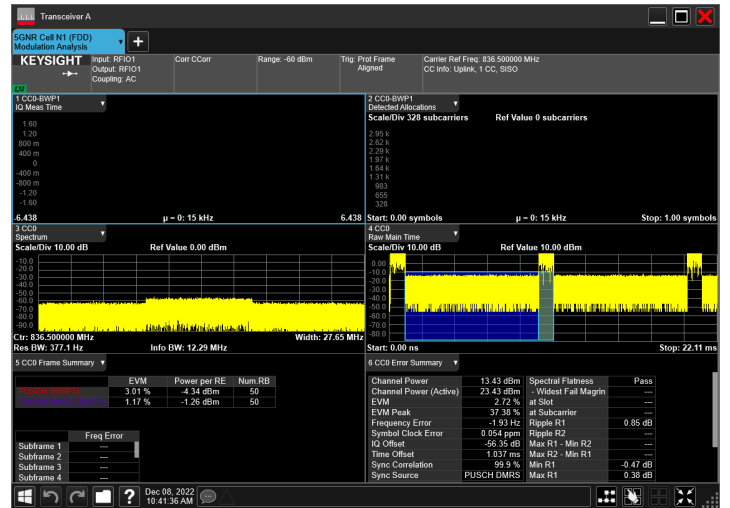


n5 , TN/VL

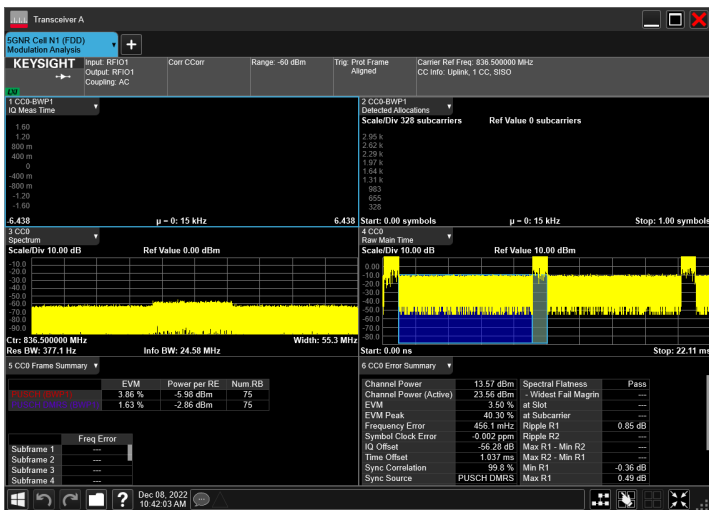
n5\_5MHz\_15kHz\_836.5MHz\_DFT-s-OFDM QPSK\_RB25@0



n5\_10MHz\_15kHz\_836.5MHz\_DFT-s-OFDM QPSK\_RB50@0



n5\_15MHz\_15kHz\_836.5MHz\_DFT-s-OFDM QPSK\_RB75@0



n5\_20MHz\_15kHz\_836.5MHz\_DFT-s-OFDM QPSK\_RB100@0

