

FCC Part 24E

Frequency stability

n2 , Normal

Mode	Value (Hz)	Limit (Hz)	Result
n2_5MHz_15kHz_1880MHz_DFT-s-OFDM QPSK_RB25@0	3.69	-470 ~ 470	Pass
n2_10MHz_15kHz_1880MHz_DFT-s-OFDM QPSK_RB50@0	32.48	-470 ~ 470	Pass
n2_15MHz_15kHz_1880MHz_DFT-s-OFDM QPSK_RB75@0	-28.61	-470 ~ 470	Pass
n2_20MHz_15kHz_1880MHz_DFT-s-OFDM QPSK_RB100@0	-20.13	-470 ~ 470	Pass

n2 , T1/VN

Mode	Value (Hz)	Limit (Hz)	Result
n2_5MHz_15kHz_1880MHz_DFT-s-OFDM QPSK_RB25@0	5.26	-470 ~ 470	Pass
n2_10MHz_15kHz_1880MHz_DFT-s-OFDM QPSK_RB50@0	0.54	-470 ~ 470	Pass
n2_15MHz_15kHz_1880MHz_DFT-s-OFDM QPSK_RB75@0	-3.99	-470 ~ 470	Pass
n2_20MHz_15kHz_1880MHz_DFT-s-OFDM QPSK_RB100@0	-11.29	-470 ~ 470	Pass

n2 , T2/VN

Mode	Value (Hz)	Limit (Hz)	Result
n2_5MHz_15kHz_1880MHz_DFT-s-OFDM QPSK_RB25@0	-26.79	-470 ~ 470	Pass
n2_10MHz_15kHz_1880MHz_DFT-s-OFDM QPSK_RB50@0	11.11	-470 ~ 470	Pass
n2_15MHz_15kHz_1880MHz_DFT-s-OFDM QPSK_RB75@0	6.1	-470 ~ 470	Pass
n2_20MHz_15kHz_1880MHz_DFT-s-OFDM QPSK_RB100@0	-1.09	-470 ~ 470	Pass

n2 , T3/VN

Mode	Value (Hz)	Limit (Hz)	Result
n2_5MHz_15kHz_1880MHz_DFT-s-OFDM QPSK_RB25@0	-24.97	-470 ~ 470	Pass

Mode	Value (Hz)	Limit (Hz)	Result
n2_10MHz_15kHz_1880MHz_DFT-s-OFDM QPSK_RB50@0	-30.68	-470 ~ 470	Pass
n2_15MHz_15kHz_1880MHz_DFT-s-OFDM QPSK_RB75@0	3.01	-470 ~ 470	Pass
n2_20MHz_15kHz_1880MHz_DFT-s-OFDM QPSK_RB100@0	-13.29	-470 ~ 470	Pass

n2 , T4/VN

Mode	Value (Hz)	Limit (Hz)	Result
n2_5MHz_15kHz_1880MHz_DFT-s-OFDM QPSK_RB25@0	1.21	-470 ~ 470	Pass
n2_10MHz_15kHz_1880MHz_DFT-s-OFDM QPSK_RB50@0	-10.85	-470 ~ 470	Pass
n2_15MHz_15kHz_1880MHz_DFT-s-OFDM QPSK_RB75@0	21.61	-470 ~ 470	Pass
n2_20MHz_15kHz_1880MHz_DFT-s-OFDM QPSK_RB100@0	-6.79	-470 ~ 470	Pass

n2 , T5/VN

Mode	Value (Hz)	Limit (Hz)	Result
n2_5MHz_15kHz_1880MHz_DFT-s-OFDM QPSK_RB25@0	19.35	-470 ~ 470	Pass
n2_10MHz_15kHz_1880MHz_DFT-s-OFDM QPSK_RB50@0	-9.24	-470 ~ 470	Pass
n2_15MHz_15kHz_1880MHz_DFT-s-OFDM QPSK_RB75@0	18.11	-470 ~ 470	Pass
n2_20MHz_15kHz_1880MHz_DFT-s-OFDM QPSK_RB100@0	19.41	-470 ~ 470	Pass

n2 , T6/VN

Mode	Value (Hz)	Limit (Hz)	Result
n2_5MHz_15kHz_1880MHz_DFT-s-OFDM QPSK_RB25@0	-1.06	-470 ~ 470	Pass
n2_10MHz_15kHz_1880MHz_DFT-s-OFDM QPSK_RB50@0	13.15	-470 ~ 470	Pass
n2_15MHz_15kHz_1880MHz_DFT-s-OFDM QPSK_RB75@0	7.46	-470 ~ 470	Pass
n2_20MHz_15kHz_1880MHz_DFT-s-OFDM QPSK_RB100@0	-1.58	-470 ~ 470	Pass

n2 , T7/VN

Mode	Value (Hz)	Limit (Hz)	Result
n2_5MHz_15kHz_1880MHz_DFT-s-OFDM QPSK_RB25@0	-18.46	-470 ~ 470	Pass
n2_10MHz_15kHz_1880MHz_DFT-s-OFDM QPSK_RB50@0	14.86	-470 ~ 470	Pass
n2_15MHz_15kHz_1880MHz_DFT-s-OFDM QPSK_RB75@0	-4.18	-470 ~ 470	Pass
n2_20MHz_15kHz_1880MHz_DFT-s-OFDM QPSK_RB100@0	19.59	-470 ~ 470	Pass

n2 , T8/VN

Mode	Value (Hz)	Limit (Hz)	Result
n2_5MHz_15kHz_1880MHz_DFT-s-OFDM QPSK_RB25@0	36.92	-470 ~ 470	Pass
n2_10MHz_15kHz_1880MHz_DFT-s-OFDM QPSK_RB50@0	7.76	-470 ~ 470	Pass
n2_15MHz_15kHz_1880MHz_DFT-s-OFDM QPSK_RB75@0	-4.57	-470 ~ 470	Pass
n2_20MHz_15kHz_1880MHz_DFT-s-OFDM QPSK_RB100@0	-8.64	-470 ~ 470	Pass

n2 , TN/VH

Mode	Value (Hz)	Limit (Hz)	Result
n2_5MHz_15kHz_1880MHz_DFT-s-OFDM QPSK_RB25@0	1.79	-470 ~ 470	Pass
n2_10MHz_15kHz_1880MHz_DFT-s-OFDM QPSK_RB50@0	19.5	-470 ~ 470	Pass
n2_15MHz_15kHz_1880MHz_DFT-s-OFDM QPSK_RB75@0	-38.96	-470 ~ 470	Pass
n2_20MHz_15kHz_1880MHz_DFT-s-OFDM QPSK_RB100@0	-5.11	-470 ~ 470	Pass

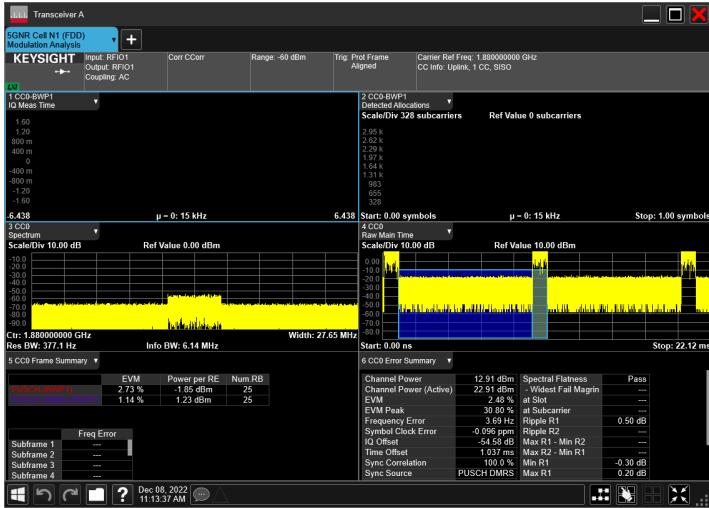
n2 , TN/VL

Mode	Value (Hz)	Limit (Hz)	Result
n2_5MHz_15kHz_1880MHz_DFT-s-OFDM QPSK_RB25@0	3.39	-470 ~ 470	Pass
n2_10MHz_15kHz_1880MHz_DFT-s-OFDM QPSK_RB50@0	-9.27	-470 ~ 470	Pass
n2_15MHz_15kHz_1880MHz_DFT-s-OFDM QPSK_RB75@0	-1.91	-470 ~ 470	Pass

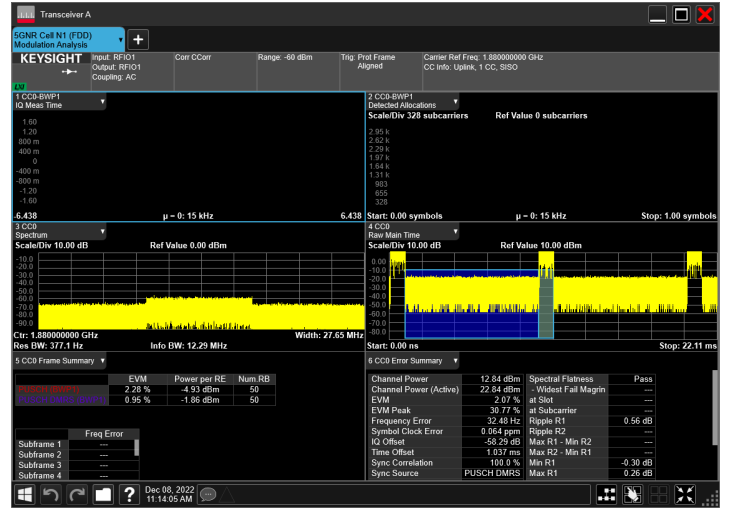
Mode	Value (Hz)	Limit (Hz)	Result
n2_20MHz_15kHz_1880MHz_DFT-s-OFDM QPSK_RB100@0	-13.28	-470 ~ 470	Pass

n2 , Normal

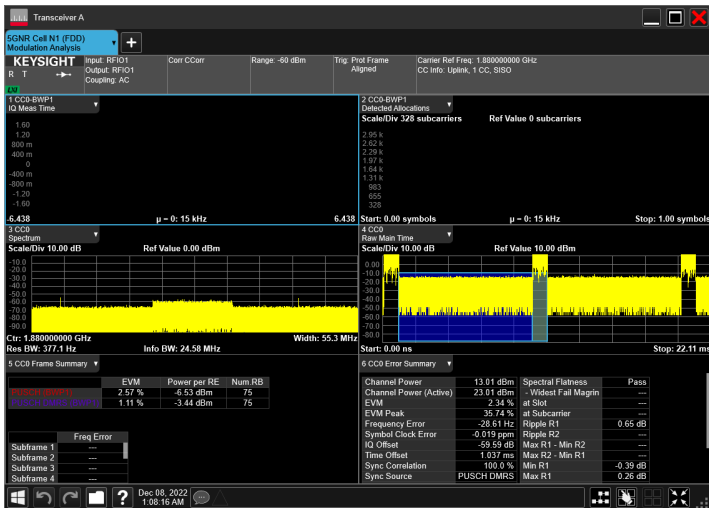
n2_5MHz_15kHz_1880MHz_DFT-s-OFDM QPSK_RB25@0



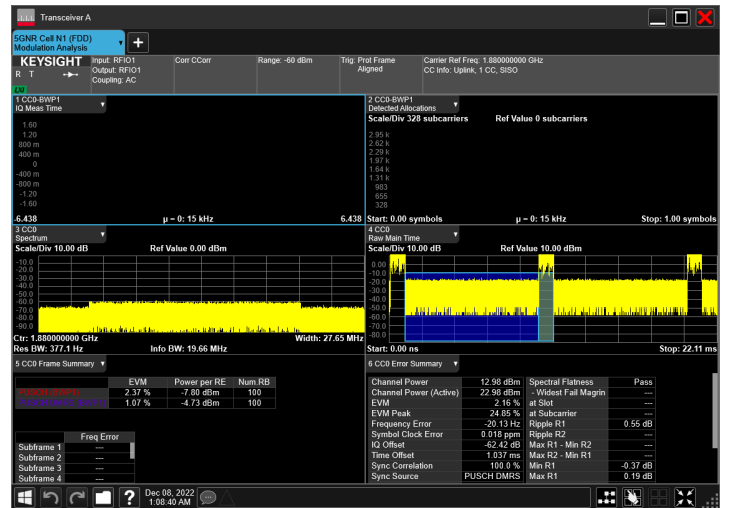
n2_10MHz_15kHz_1880MHz_DFT-s-OFDM QPSK_RB50@0



n2_15MHz_15kHz_1880MHz_DFT-s-OFDM QPSK_RB75@0



n2_20MHz_15kHz_1880MHz_DFT-s-OFDM QPSK_RB100@0

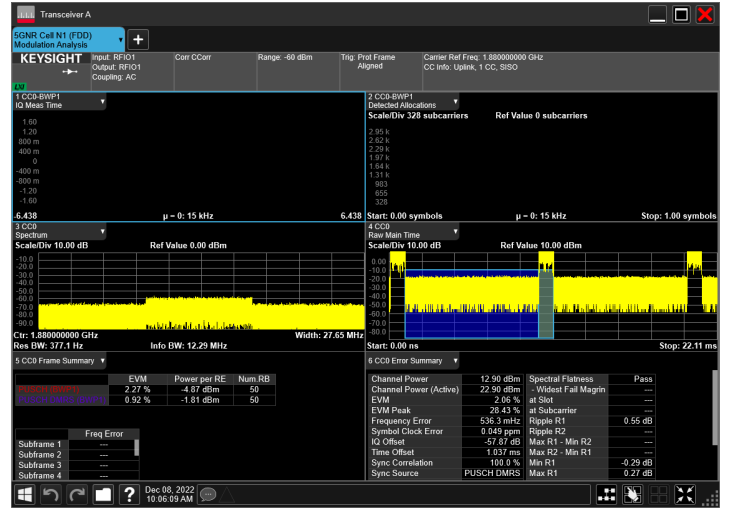


n2 , T1/VN

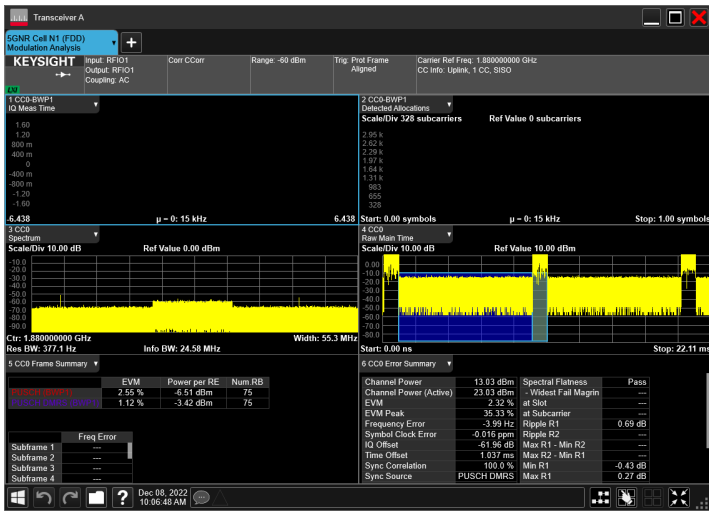
n2_5MHz_15kHz_1880MHz_DFT-s-OFDM QPSK_RB25@0



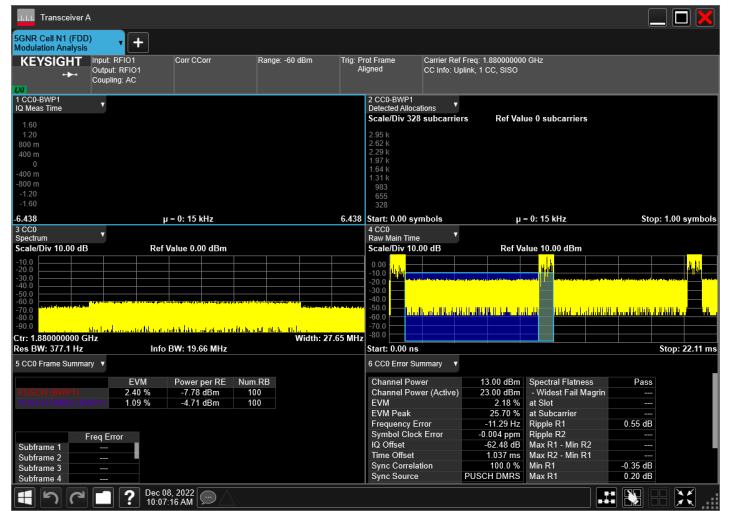
n2_10MHz_15kHz_1880MHz_DFT-s-OFDM QPSK_RB50@0



n2_15MHz_15kHz_1880MHz_DFT-s-OFDM QPSK_RB75@0

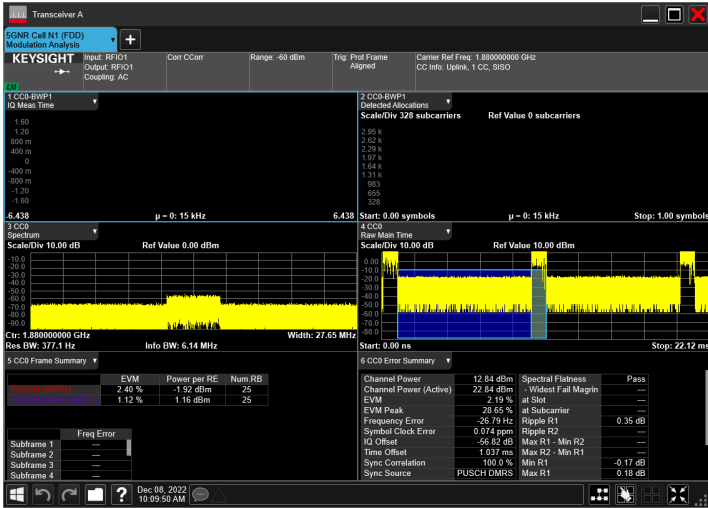


n2_20MHz_15kHz_1880MHz_DFT-s-OFDM QPSK_RB100@0

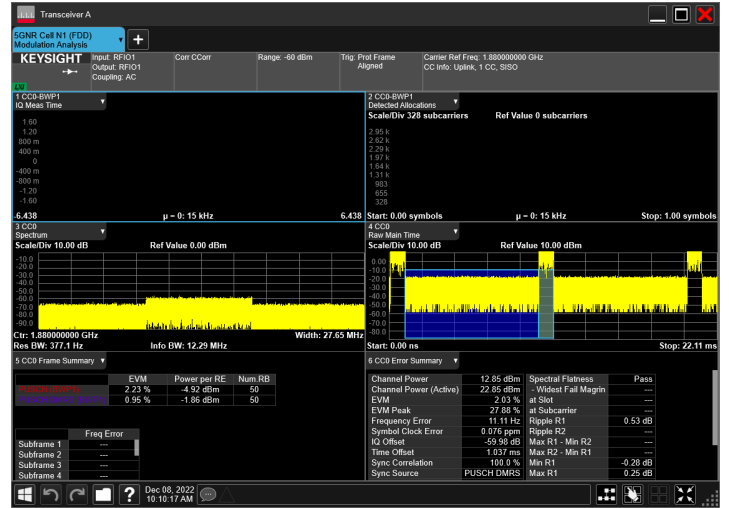


n2 , T2/VN

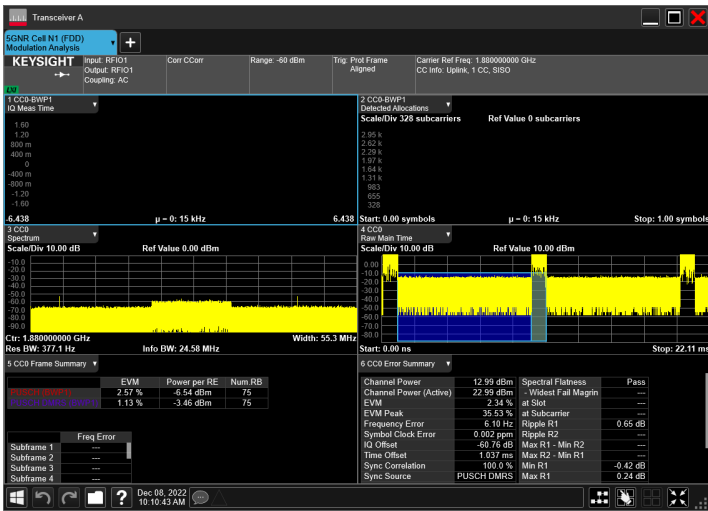
n2_5MHz_15kHz_1880MHz_DFT-s-OFDM QPSK_RB25@0



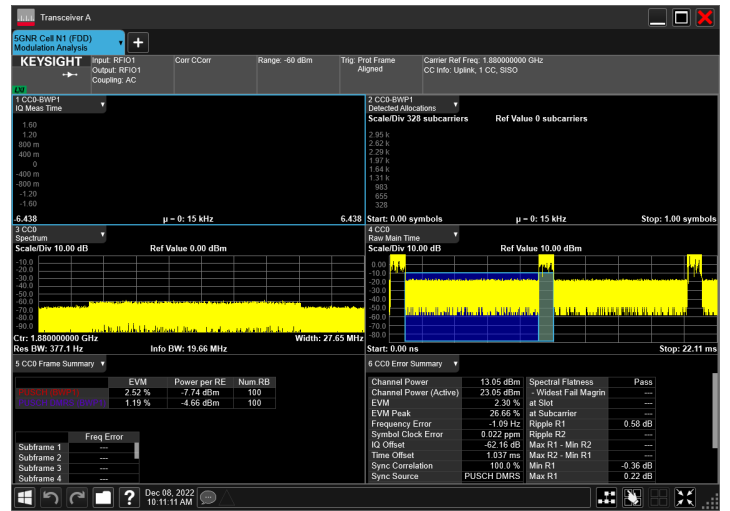
n2_10MHz_15kHz_1880MHz_DFT-s-OFDM QPSK_RB50@0



n2_15MHz_15kHz_1880MHz_DFT-s-OFDM QPSK_RB75@0

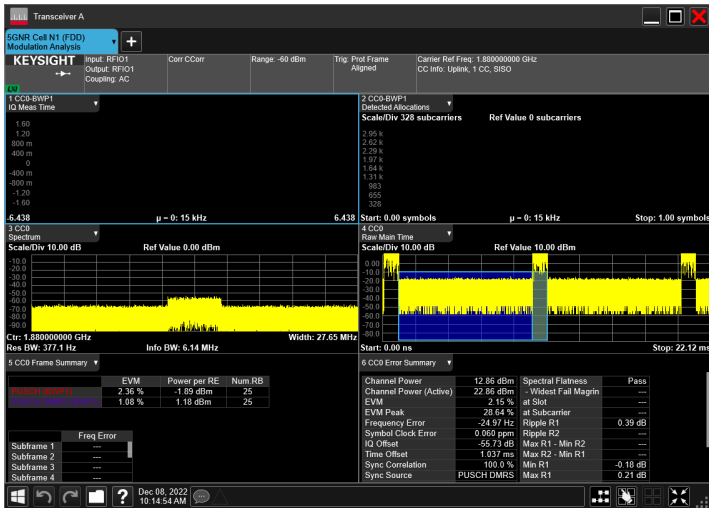


n2_20MHz_15kHz_1880MHz_DFT-s-OFDM QPSK_RB100@0

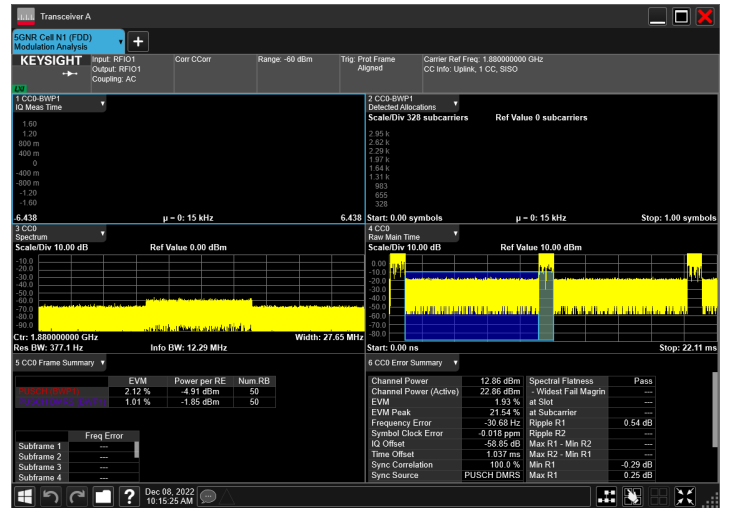


n2 , T3/VN

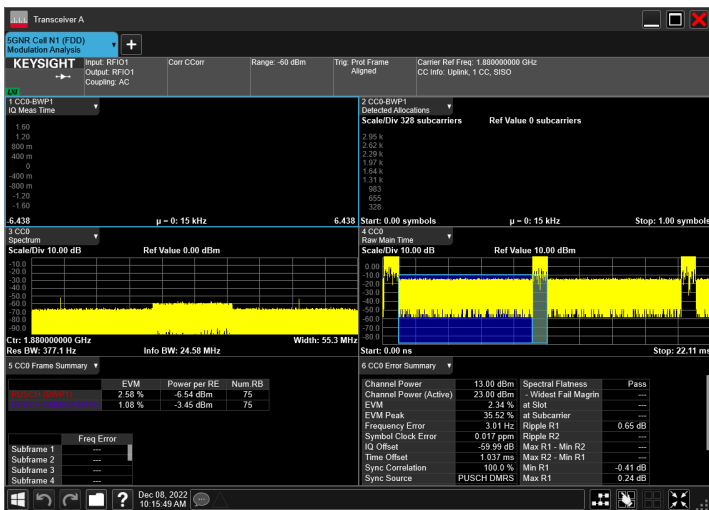
n2_5MHz_15kHz_1880MHz_DFT-s-OFDM QPSK_RB25@0



n2_10MHz_15kHz_1880MHz_DFT-s-OFDM QPSK_RB50@0



n2_15MHz_15kHz_1880MHz_DFT-s-OFDM QPSK_RB75@0

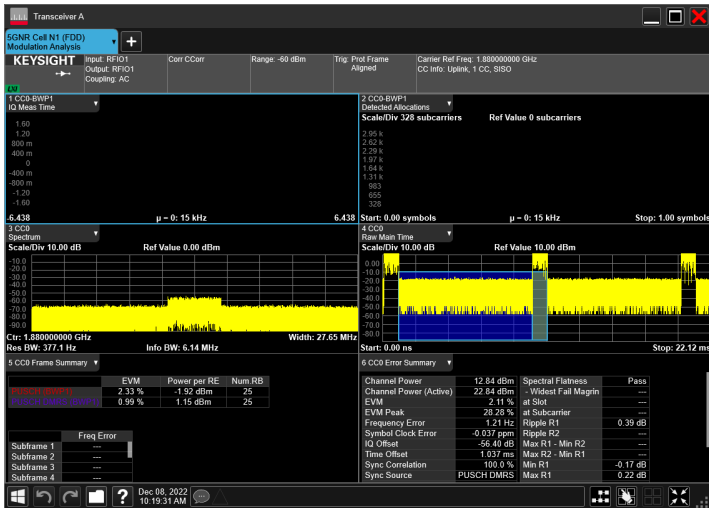


n2_20MHz_15kHz_1880MHz_DFT-s-OFDM QPSK_RB100@0

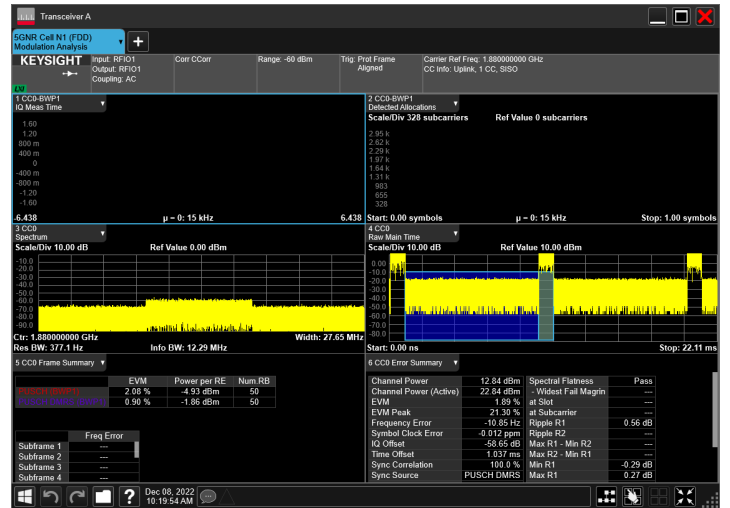


n2 , T4/VN

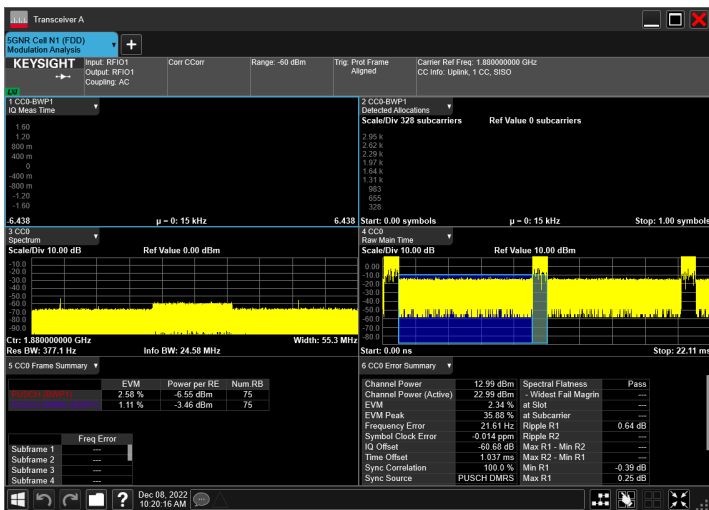
n2_5MHz_15kHz_1880MHz_DFT-s-OFDM QPSK_RB25@0



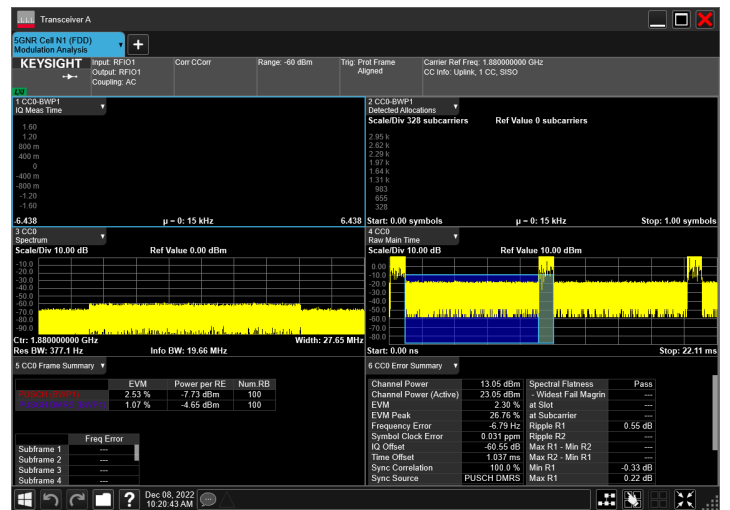
n2_10MHz_15kHz_1880MHz_DFT-s-OFDM QPSK_RB50@0



n2_15MHz_15kHz_1880MHz_DFT-s-OFDM QPSK_RB75@0

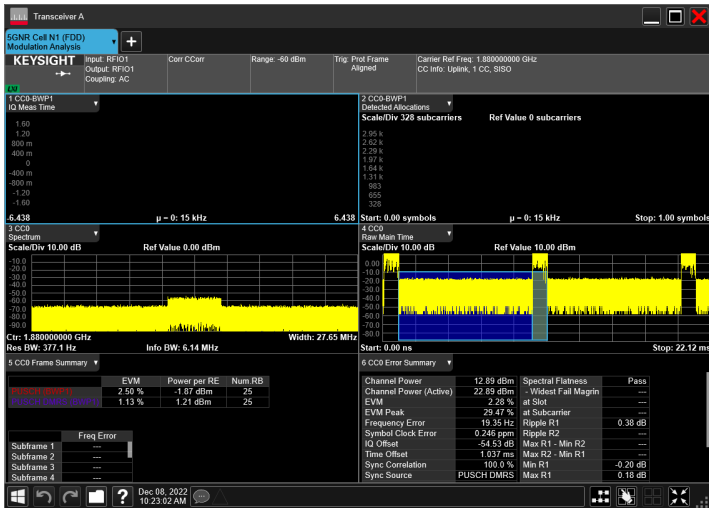


n2_20MHz_15kHz_1880MHz_DFT-s-OFDM QPSK_RB100@0

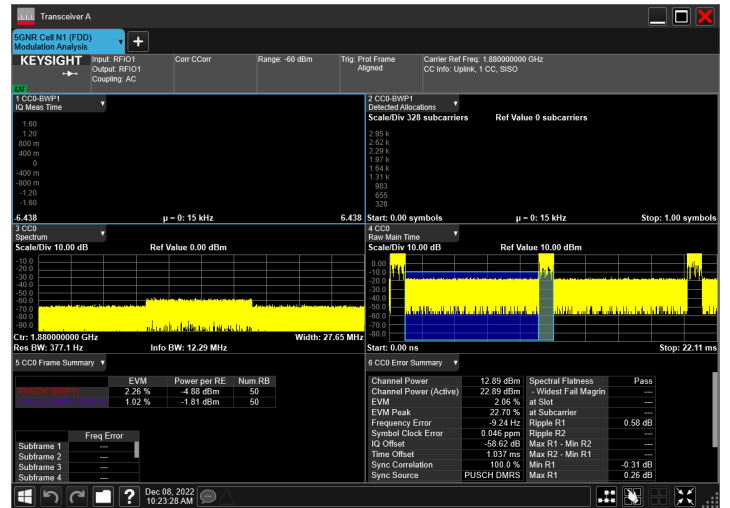


n2 , T5/VN

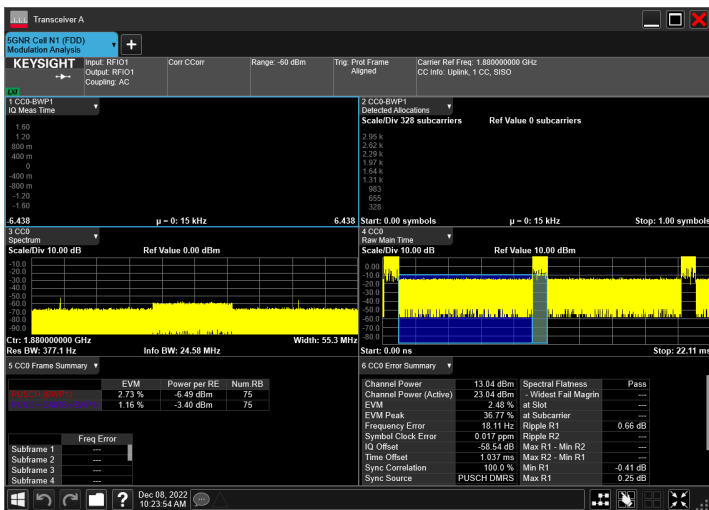
n2_5MHz_15kHz_1880MHz_DFT-s-OFDM QPSK_RB25@0



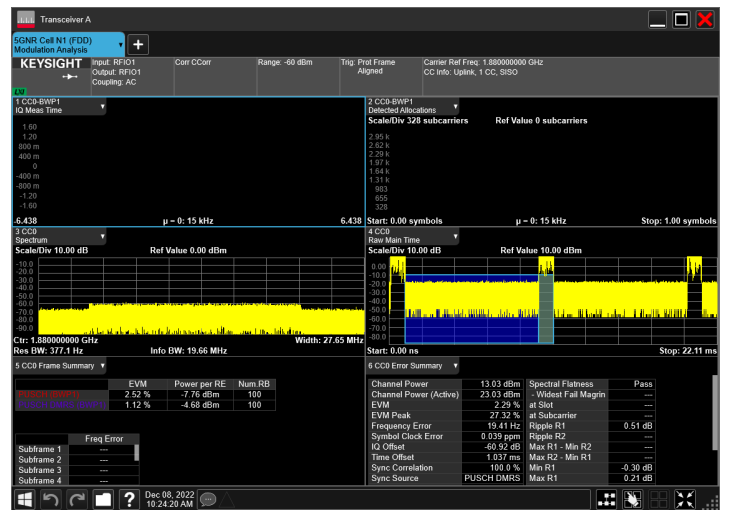
n2_10MHz_15kHz_1880MHz_DFT-s-OFDM QPSK_RB50@0



n2_15MHz_15kHz_1880MHz_DFT-s-OFDM QPSK_RB75@0

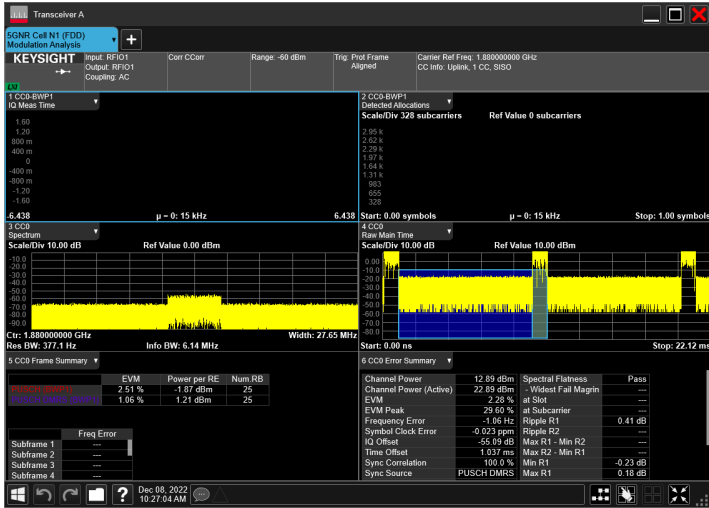


n2_20MHz_15kHz_1880MHz_DFT-s-OFDM QPSK_RB100@0

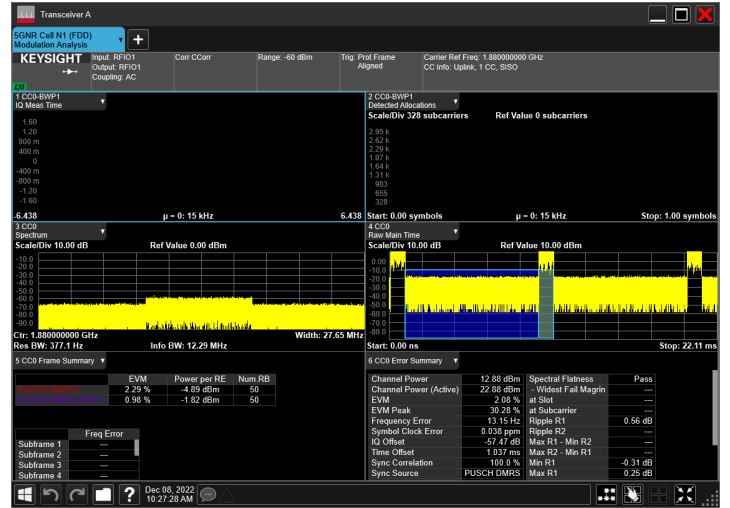


n2 , T6/VN

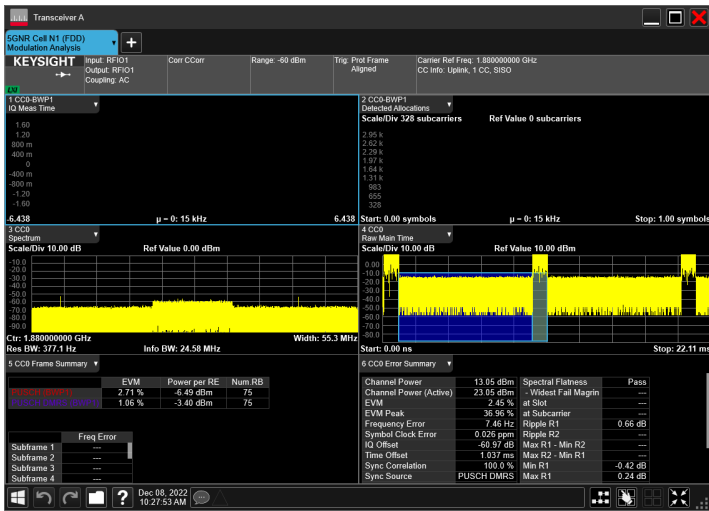
n2_5MHz_15kHz_1880MHz_DFT-s-OFDM QPSK_RB25@0



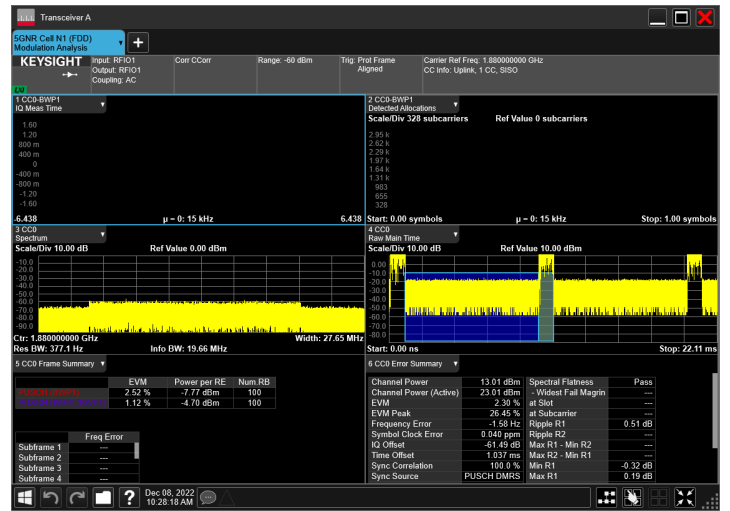
n2_10MHz_15kHz_1880MHz_DFT-s-OFDM QPSK_RB50@0



n2_15MHz_15kHz_1880MHz_DFT-s-OFDM QPSK_RB75@0

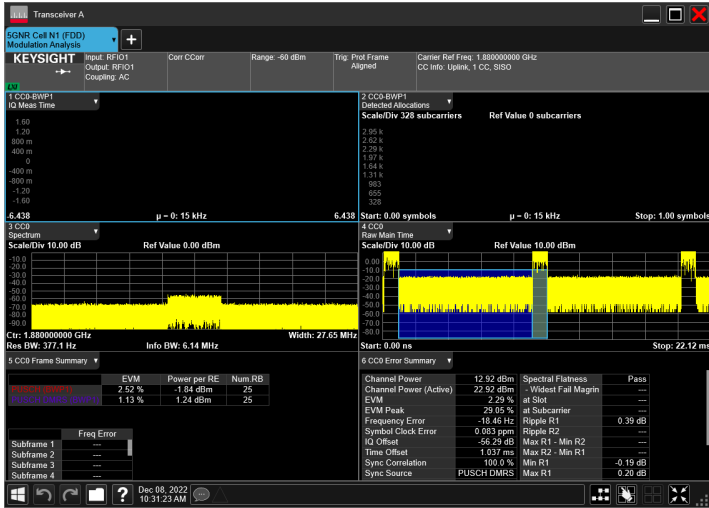


n2_20MHz_15kHz_1880MHz_DFT-s-OFDM QPSK_RB100@0

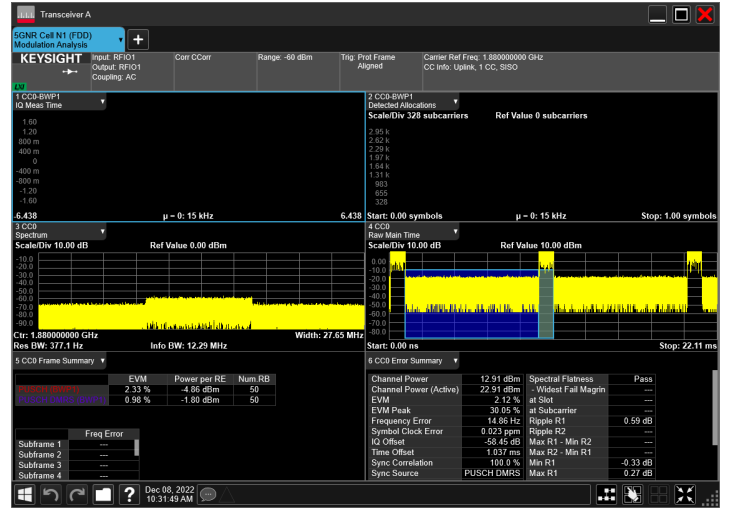


n2 , T7/VN

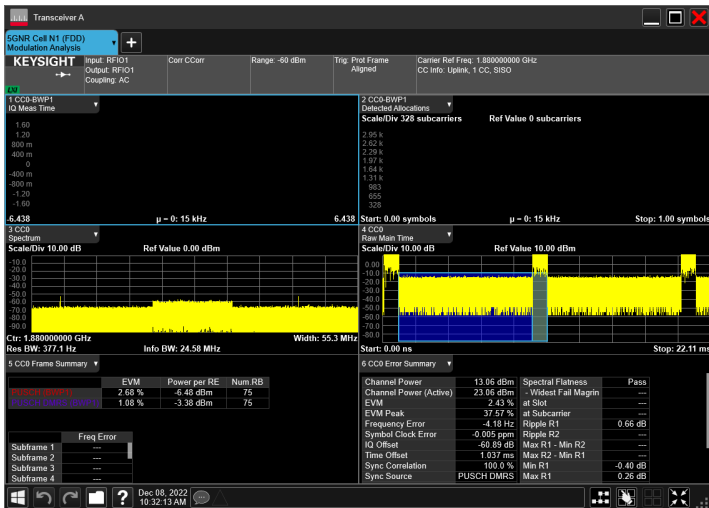
n2_5MHz_15kHz_1880MHz_DFT-s-OFDM QPSK_RB25@0



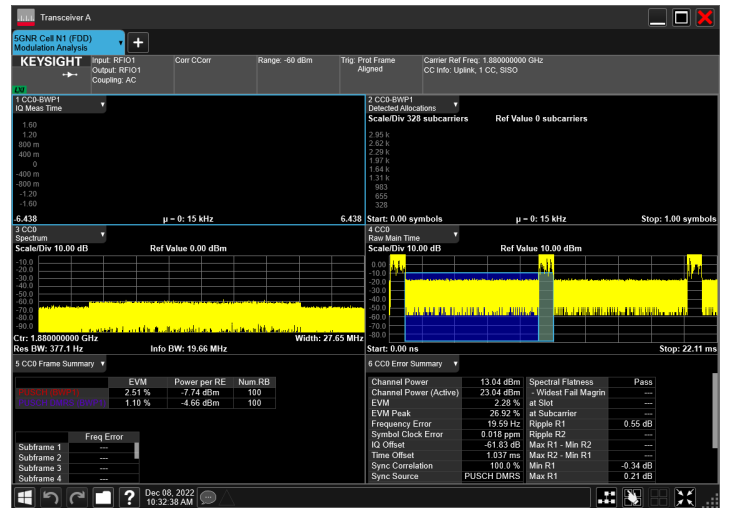
n2_10MHz_15kHz_1880MHz_DFT-s-OFDM QPSK_RB50@0



n2_15MHz_15kHz_1880MHz_DFT-s-OFDM QPSK_RB75@0

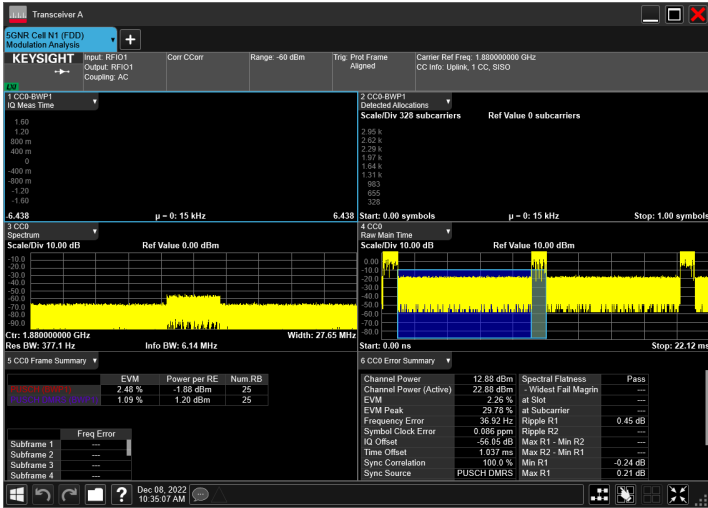


n2_20MHz_15kHz_1880MHz_DFT-s-OFDM QPSK_RB100@0

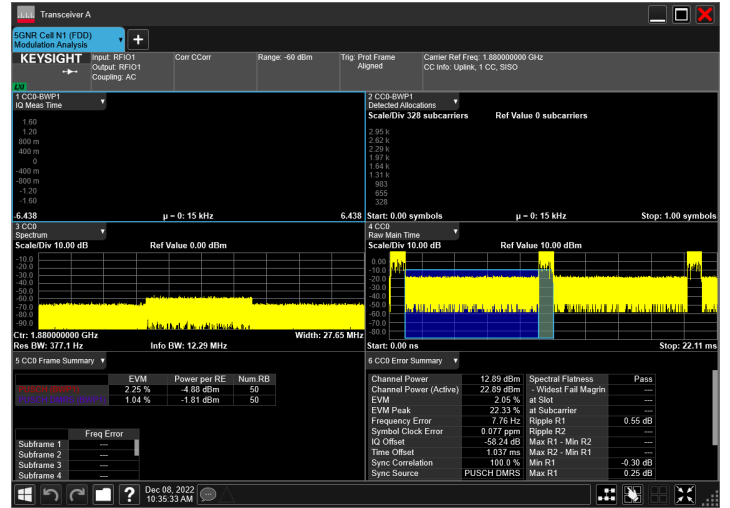


n2 , T8/VN

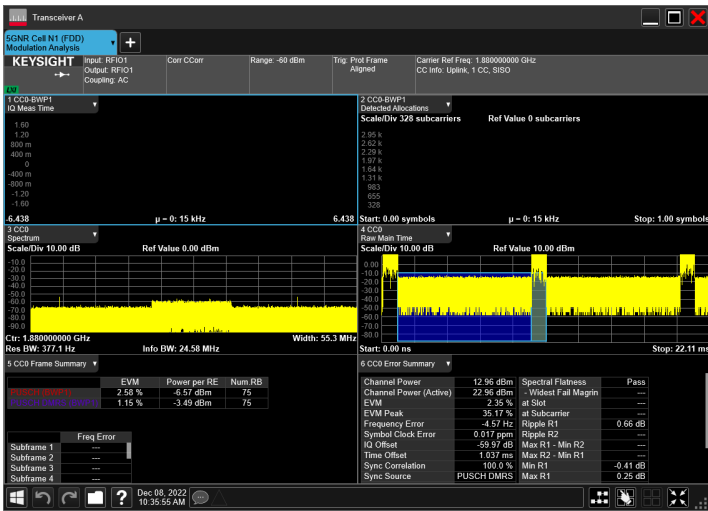
n2_5MHz_15kHz_1880MHz_DFT-s-OFDM QPSK_RB25@0



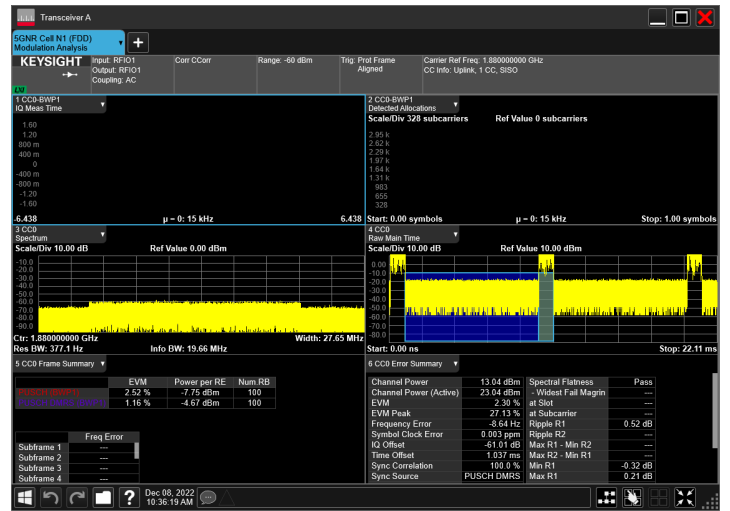
n2_10MHz_15kHz_1880MHz_DFT-s-OFDM QPSK_RB50@0



n2_15MHz_15kHz_1880MHz_DFT-s-OFDM QPSK_RB75@0

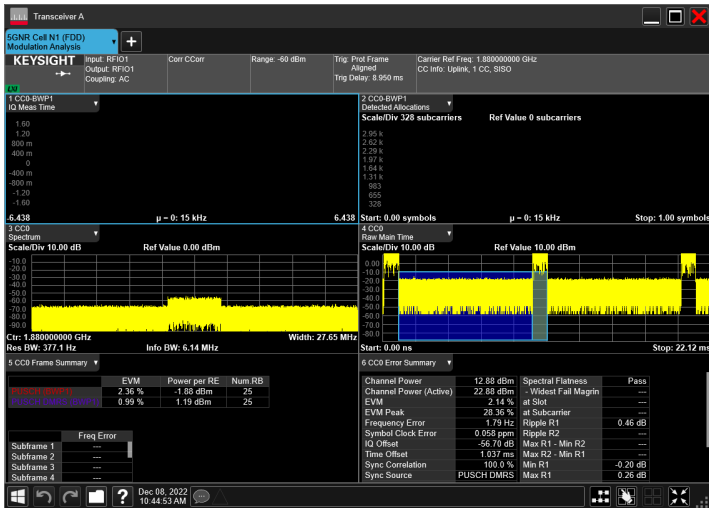


n2_20MHz_15kHz_1880MHz_DFT-s-OFDM QPSK_RB100@0

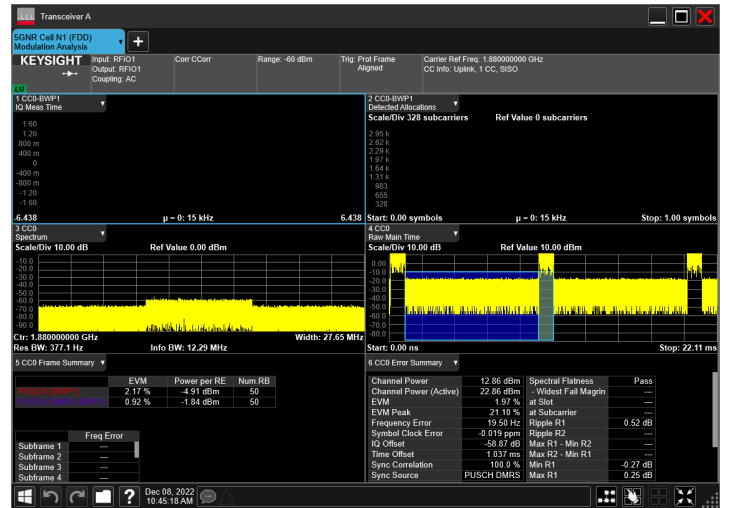


n2 , TN/VH

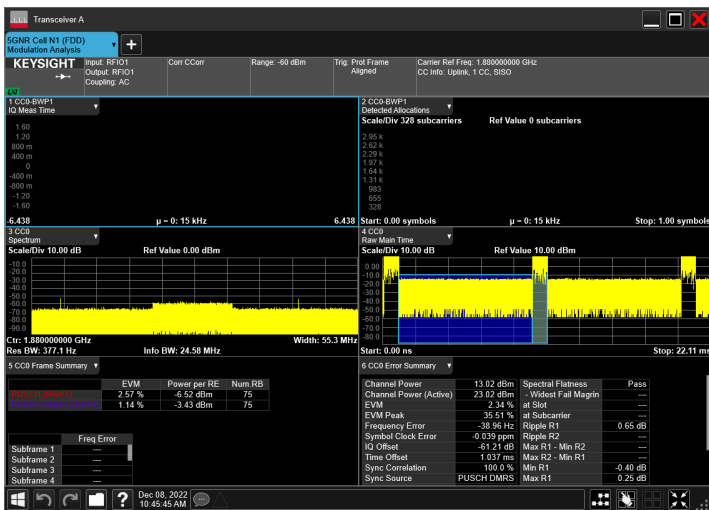
n2_5MHz_15kHz_1880MHz_DFT-s-OFDM QPSK_RB25@0



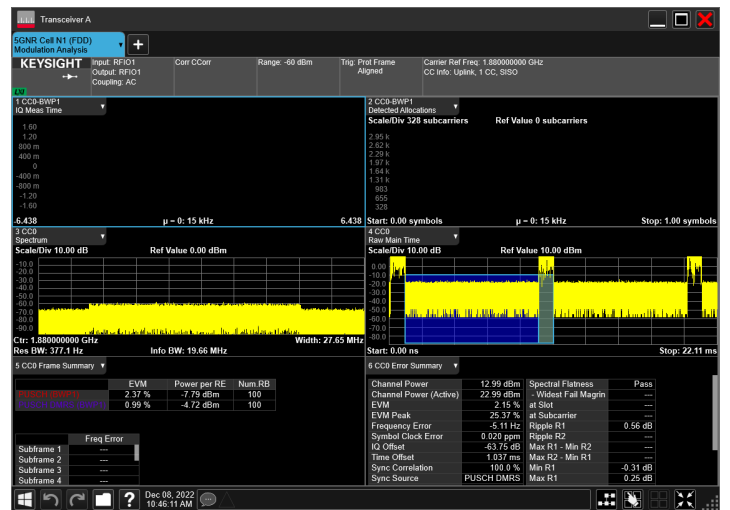
n2_10MHz_15kHz_1880MHz_DFT-s-OFDM QPSK_RB50@0



n2_15MHz_15kHz_1880MHz_DFT-s-OFDM QPSK_RB75@0

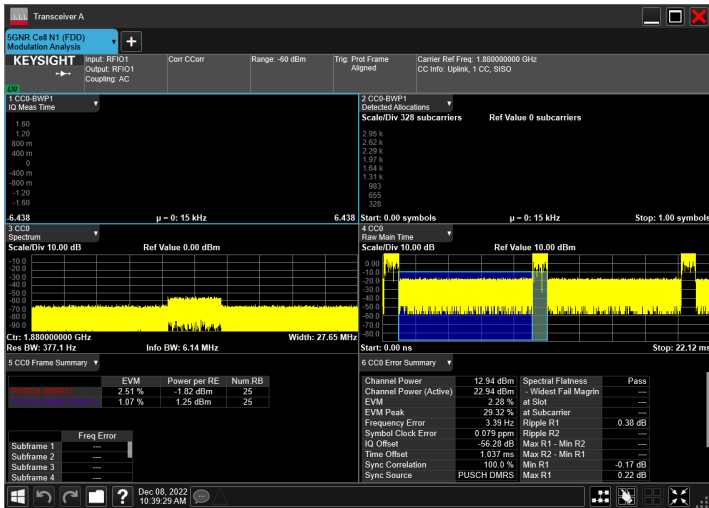


n2_20MHz_15kHz_1880MHz_DFT-s-OFDM QPSK_RB100@0

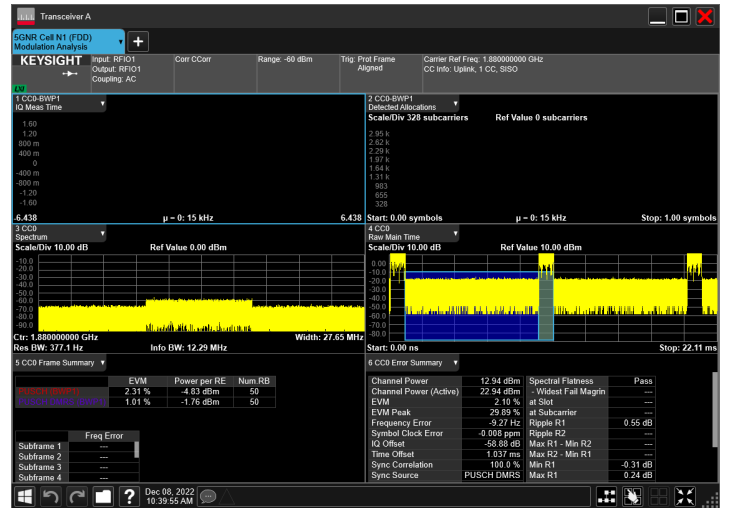


n2 , TN/VL

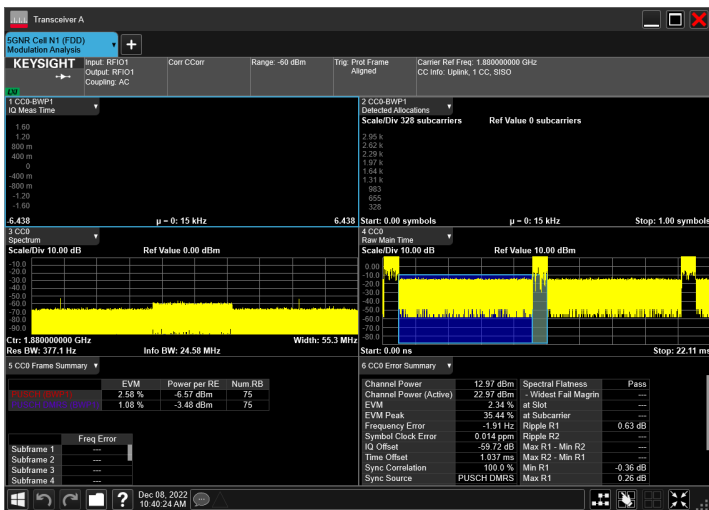
n2_5MHz_15kHz_1880MHz_DFT-s-OFDM QPSK_RB25@0



n2_10MHz_15kHz_1880MHz_DFT-s-OFDM QPSK_RB50@0



n2_15MHz_15kHz_1880MHz_DFT-s-OFDM QPSK_RB75@0



n2_20MHz_15kHz_1880MHz_DFT-s-OFDM QPSK_RB100@0

