

User's Manual (FDM-650)

Version 0.1

2013-09-13

Prepared by:



Regulatory Information & Safety notices (FDM-650)

Revision History

| Version | Date | Description | Editor |
|---------|---------------|-----------------|---------|
| 0.1 | 12th Sep 2013 | Initial release | WB Song |
| | | | |
| | | | |
| | | | |
| | | | |
| | | | |
| | | | |
| | | | |
| | | | |
| | | | |
| | | | |

Table of contents

1. Regulatory Notices ----- 5

2. Safety and Notices ----- 6

 Important Notice ----- 6

 Safety and Harzards ----- 7

 POTENTIALLY UNSAFE AREAS ----- 7

1. Regulatory Notices

FCC Part 15.105 statement

This equipment has been tested and found to comply with the limits for a Class B digital device, pursuant to part 15 of the FCC Rules.

These limits are designed to provide reasonable protection against harmful interference in a residential installation. This equipment generates, uses and can radiate radio frequency energy and, if not installed and used in accordance with the instructions, may cause harmful interference to radio communications. However, there is no guarantee that interference will not occur in a particular installation. If this equipment does cause harmful interference to radio or television reception, which can be determined by turning the equipment off and on, the user is encouraged to try to correct the interference by one or more of the following measures :

- Reorient or relocate the receiving antenna.
- Increase the separation between the equipment and receiver.
- Connect the equipment into an outlet on a circuit different from that to which the receiver is connected.
- Consult the dealer or an experienced radio/TV technician for help.

FCC Part 15.21 statement

Any changes or modifications to this device not explicitly approved by manufacturer could void your authority to operate this equipment.

FCC Part 15.19 statement

This device complies with part 15 of the FCC Rules. Operation is subject to the following two conditions: (1) This device may not cause harmful interference, and (2) this device must accept any interference received, including interference that may cause undesired operation.

This equipment complies with FCC radiation exposure limits set forth for an uncontrolled environment. This equipment should be installed and operated with minimum 20 cm between the radiator and your body. This transmitter must not be collocated or operating in conjunction with any other antenna or transmitter unless authorized to do so by the FCC.

2. Safety and Notices

Important Notice

Because of the nature of wireless communications, transmission and reception of data can never be guaranteed. Data may be delayed, corrupted (i.e., have errors), or be totally lost.

Although significant delay or losses of data are rare when wireless devices such as the FDM-650 CDMA modem are used in a normal manner with a well-constructed network, they should be used in situations where failure to transmit or receive data could result in damage of any kind to the user or any other party, including but not limited to personal injury, death, or loss or property.

FTI accepts no responsibility for damages of any kind resulting from delays or errors in data transmitted or received using the FDM-650 CDMA modem or failure of FDM-650 CDMA modem to transmit or receive such data.

Safety and Harzards

Do not operate the FDM-650 CDMA modem in areas where blasting is in progress, where explosive atmospheres may be present, near medical equipment, life support equipment, or any equipment which may be susceptible to any form of radio interference.

In such areas, the FDM-650 CDMA modem **MUST BE POWERED OFF**.

It can transmit signals that could interfere with this equipment.

Do not operate the FDM-650 CDMA modem in any aircraft, whether the aircraft is on the ground or in flight. In aircraft, the FDM-650 CDMA modem **MUST BE POWERED OFF**.

When operating, it can transmit signals that could interfere with various onboard systems.

The driver or operator of any vehicle should not operate the FDM-650 CDMA modem while in control of a vehicle. Doing so will detract from the driver or operator's control and operation of that vehicle. In some jurisdictions, operating such communications devices while in control of a vehicle is an offense.

POTENTIALLY UNSAFE AREAS

Posted facilities

- Turn off this modem in any facility or area when posted notices require you to do so.

Blasting areas

- Turn off Modem where blasting is in progress. Observe restrictions and follow any regulations or rules.

Potentially explosive atmospheres: Turn off Modem when you are in any area with a potentially explosive atmosphere. Obey all signs and instructions.

Sparks in such areas could cause an explosion or fire, resulting in bodily injury or death.

Areas with a potentially explosive atmosphere are often but not always clearly marked.

They include:

- fuelling areas such as gas or petrol stations
- below deck on boats
- transfer or storage facilities for fuel or chemicals
- vehicles using liquefied petroleum gas, such as propane or butane
- areas when the air contains chemicals or particles such as grain, dust or metal powders
- any other area where you would normally be advised to turn off your Modem.

**CDMA 1xEV-DO Industrial Modem
Driver Installation guide
(FDM-650)**

All data and information contained in or disclosed by this document are confidential and proprietary information of FTI, and all rights therein are expressly reserved. By accepting this material, the recipient agrees that this material and the information contained therein are held in confidence and in trust and will not be used, copied, reproduced in whole or in part, nor its contents revealed in any manner to others without the express written permission of FTI.

This information provided in this document is provided on an "as is" basis.

In no event will FTI be liable for any damages arising directly or indirectly from any use of information contained in this document.

Information in this document is preliminary and subjected to change without any notice.

Contact Information

If you have any technical queries about this manual, please contact:

Email: wbsong@franklintech.co.kr

Revision History

| Version | Date | Description | Editor |
|---------|---------------|-----------------|---------|
| 0.1 | 12th Sep 2013 | Initial release | WB Song |
| | | | |
| | | | |
| | | | |
| | | | |
| | | | |
| | | | |
| | | | |
| | | | |
| | | | |
| | | | |

Table of contents

- 1. Install Modem Driver ----- 11
 - 1.1 Automatic modem driver install ----- 11
 - 1.2 Manual modem driver install -----12

1. Install Modem Driver

Before you can begin using the FDM-650 CDMA 1x/EVDO Modem, you must:

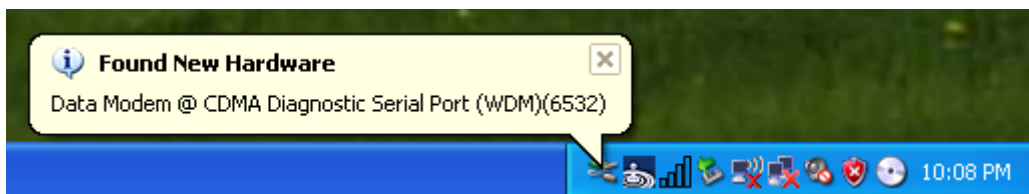
1.1 Automatic modem driver install

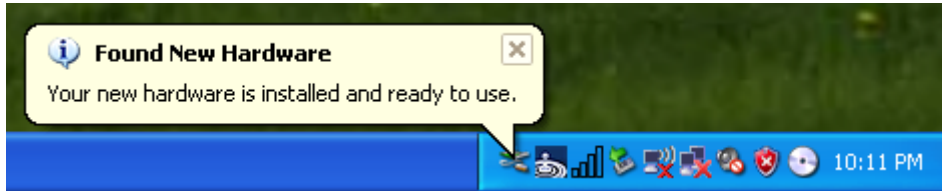
On Window 2000

On inserting Modem on Window 2000, there will not be any window and users can run applications after the device is detected.

On Window XP

If your operation system is XP on inserting Modem, you can see “Found New Hardware” Dialog.



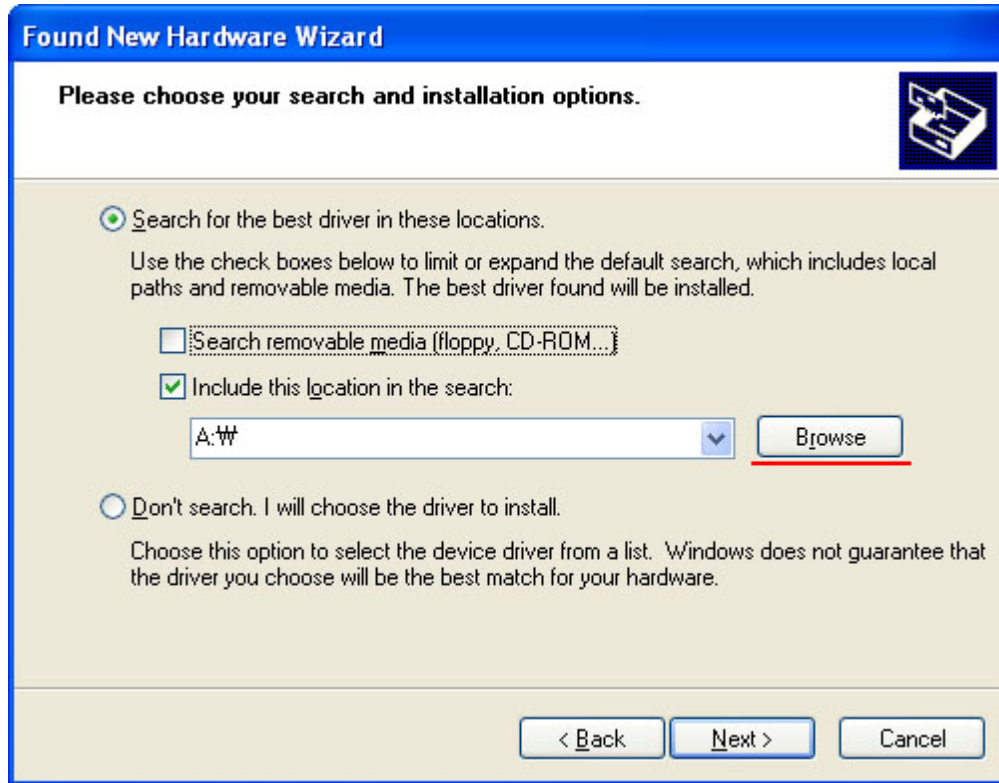


1.2 Manual modem driver install

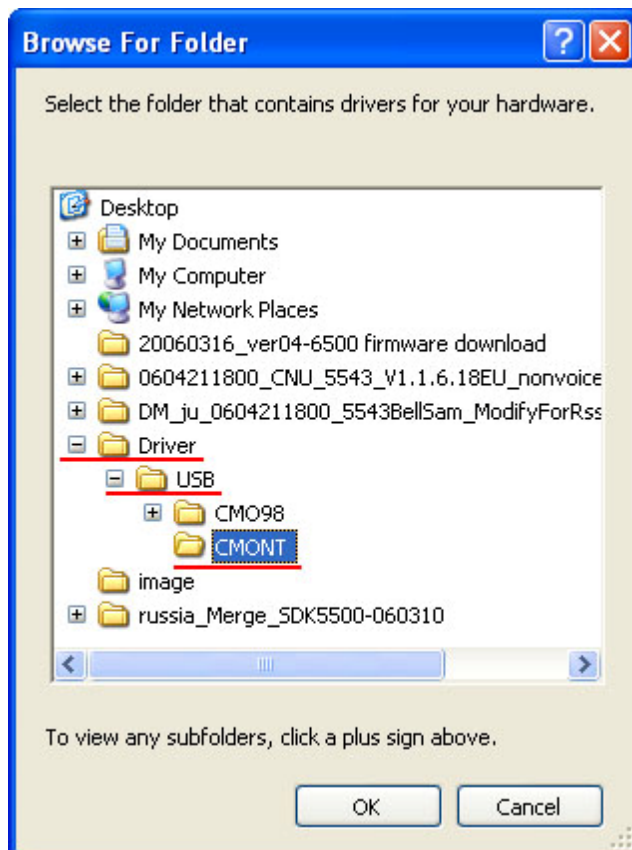
Install from a list or specific location

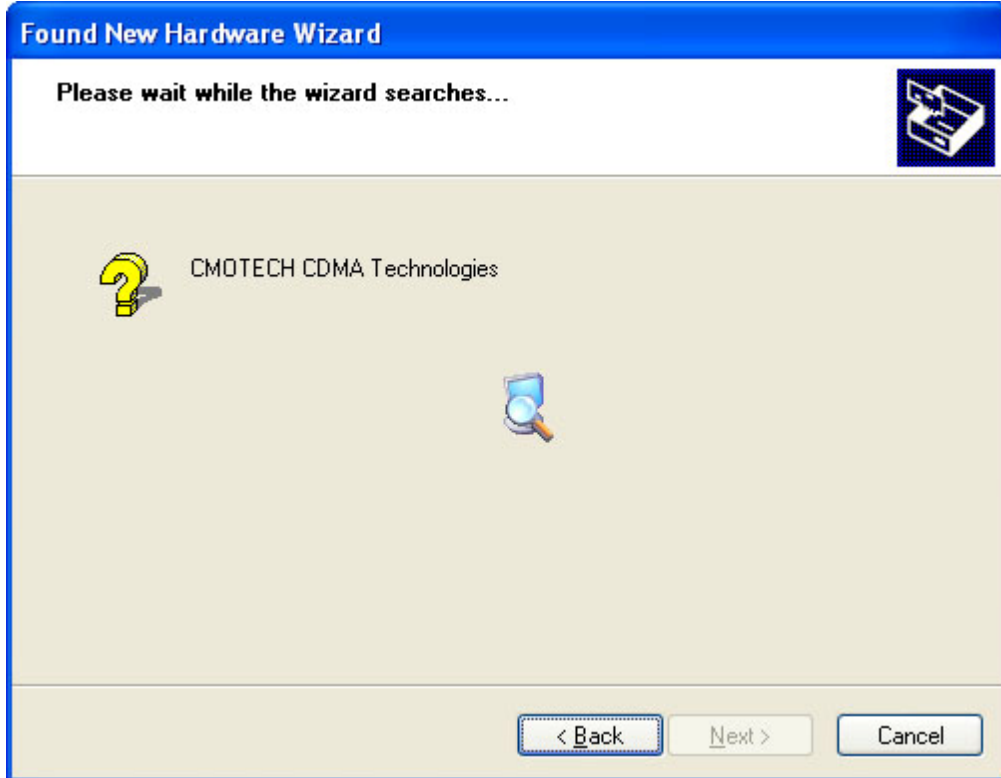
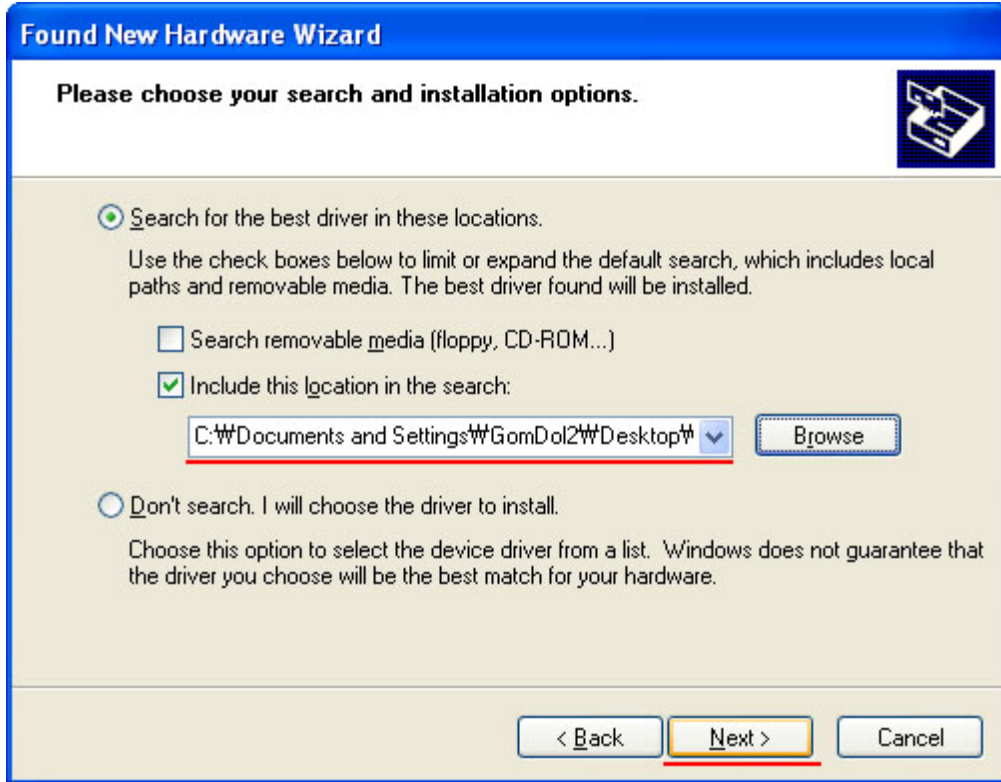


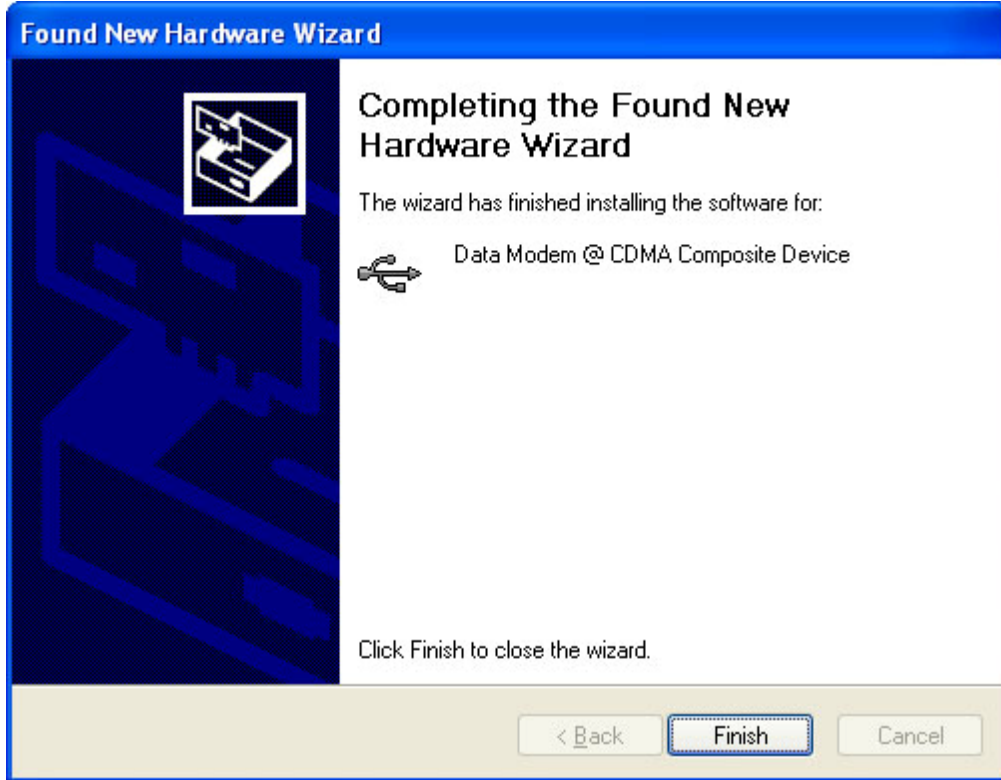
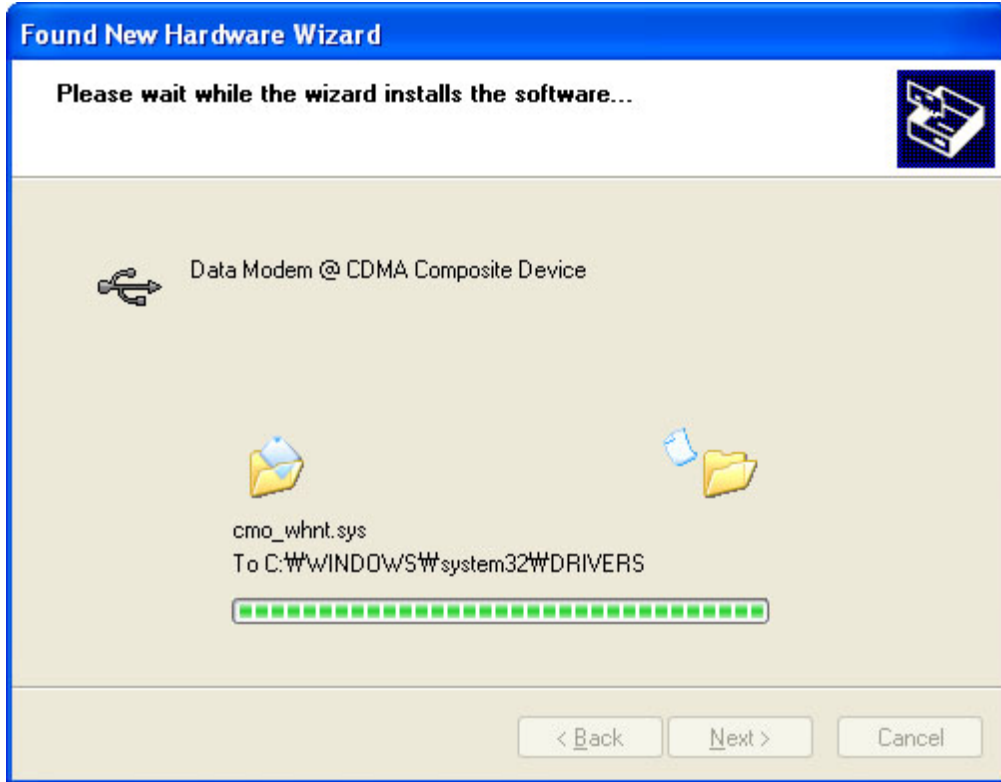
click 'browse'



select driver folder







more 2 time install, you can see mcci driver install complete.

