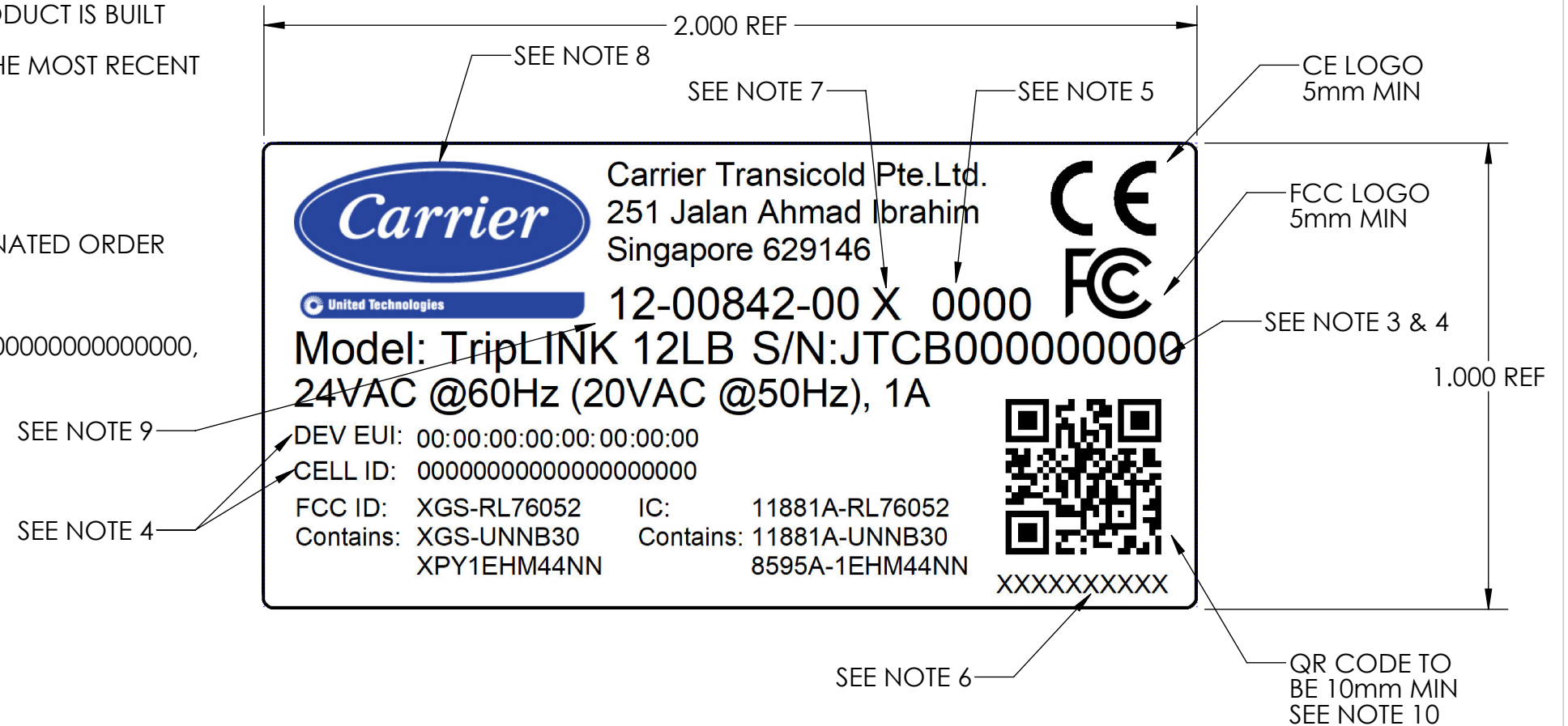


NOTES:

- PARTS TO BE MANUFACTURED IN COMPLIANCE WITH THE MOST CURRENT RoHS & REACH DIRECTIVE. RoHS & REACH DECLARATION MUST BE SUBMITTED WITH FIRST ARTICLE INSPECTION SAMPLES, AND RESUBMITTED WHENEVER NEW CHANGES TO THE DIRECTIVES ARE ISSUED.
- LABEL CONTENT, TEXT, QR CODE AND GRAPHIC SHOWN FOR REFERENCE ONLY, VERIFY CONTENT FOR PRODUCTION
- SERIAL NUMBER CONFIGURATION TO BE DESIGNATED AS PER DOC100190
- SERIAL NUMBERS, LoRA, CCID AUTOMATICALLY GENERATED
- MANUFACTURING DATE CODE TO FOLLOW 4 DIGIT FORMAT
 - FIRST 2 DIGITS: MFG YEAR, SECOND 2 DIGITS: MFG WEEK
 - (EXAMPLE: 1920 (2019, MAY))
- FIELD TO SPECIFY THE NAME OF THE COUNTRY IN WHICH THE PRODUCT IS BUILT
- REVISION TO MATCH THE REVISION OF THE PRODUCT BUILT PER THE MOST RECENT ACTIVE BOM
- GRAPHIC IMAGE ASPECT RATIOS MUST BE MAINTAINED
- ADDITIONAL VARIANT DEFINED BY VARYING "-00" SUFFIX
- QR CODE TO CONTAIN THE FOLLOWING ID NUMBERS IN DEPSIGNATED ORDER SEPARATED BY COMMMAS:
 - SERIAL NUMBER, PART NUMBER_REV, CCID, IMEI, LoRA ID
 - EXAMPLE BELOW:
JTCB000000000, 12-00842-00_A, 00000000000000000000, 0000000000000000, 00:00:00:00:00:00:00:00

REVISIONS				
REV	ECO	DESCRIPTION	DATE	APPROVAL
A	4349	INITIAL RELEASE		



VARIANT TABLE		
VARIANT PART NUMBER	PART REVISION	PRODUCT VARIANT
SR402195-001	A	12-00842-00
SR402195-002	A	12-00842-02

MATERIAL	WHT POLYESTER LBL STOCK (P/N 754001801)	ORBCOMM™ ORBCOMM Inc. 395 W Passaic St, Suite 325 Rochelle Park, NJ 07662, United States Tel: 703-433-6300
FINISH	REFER TO LABEL STOCK MATERIAL	
© ORBCOMM Inc. 2019 PROPRIETARY AND CONFIDENTIAL	THIRD ANGLE PROJECTION	TITLE: 12-00842-00 / CT 4000 CARRIER VARIANTS MAIN LABEL
DO NOT DISCLOSE OR COPY	ALL DIMENSIONS ARE IN INCHES (MILLIMETERS) UNLESS OTHERWISE SPECIFIED	DWG. NO. SR402195-000
DRAWING FOR REF ONLY USE 3D CAD MODEL FOR MANUFACTURE	DRAWN BY LAZAR R MUŠ	REV A
	DATE 2019-05-03	SIZE B DO NOT SCALE FROM DRAWING SHEET 1 OF 1