

OG2 Modem Internal Photos

Orbcomm
750 Palladium Drive, Suite 368
Ottawa, Ontario, Canada, K2V 1C7
(613) 836-6288
www.Orbcomm.com

Revision	Description	Date	Implemented By	Approved By
A	Initial release	April 18,2016	X. Wang	Xinming Wang

Restrictions on Disclosure of Data

This document contains information proprietary to ORBCOMM, or to a third party to which ORBCOMM may have legal obligation to protect such information from unauthorized disclosure, use or duplication. Any disclosure, use or duplication of this document, or of any of the information contained herein for other than the specific purpose for which it was disclosed, is expressly prohibited.

TABLE OF CONTENTS

1. INTRODUCTION3

2. OG2 MODULE CONFIGURATION DIAGRAM.....3

3. OG2 MODEM INTERNAL PICTURES4

1. INTRODUCTION

This document provides the internal pictures of ORBCOMM's Mobile Satellite Earth Station(MSES) Module :OG2 Module, which is operated in ORBCOMM OG2 Satellite network. The OG2 MSES Module consists of a OG2 Modem circuit card and a passive antenna card.

2. OG2 MODULE CONFIGURATION DIAGRAM

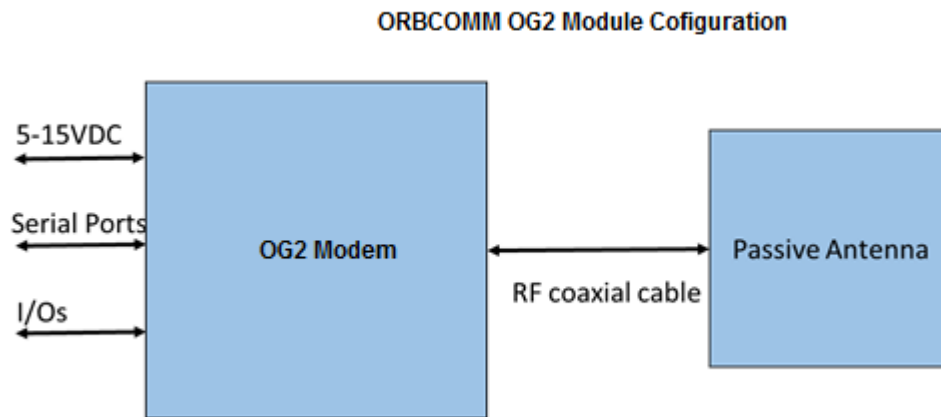


Figure 2.1 OG2 Module configuration diagram

3. OG2 MODEM PICTURES

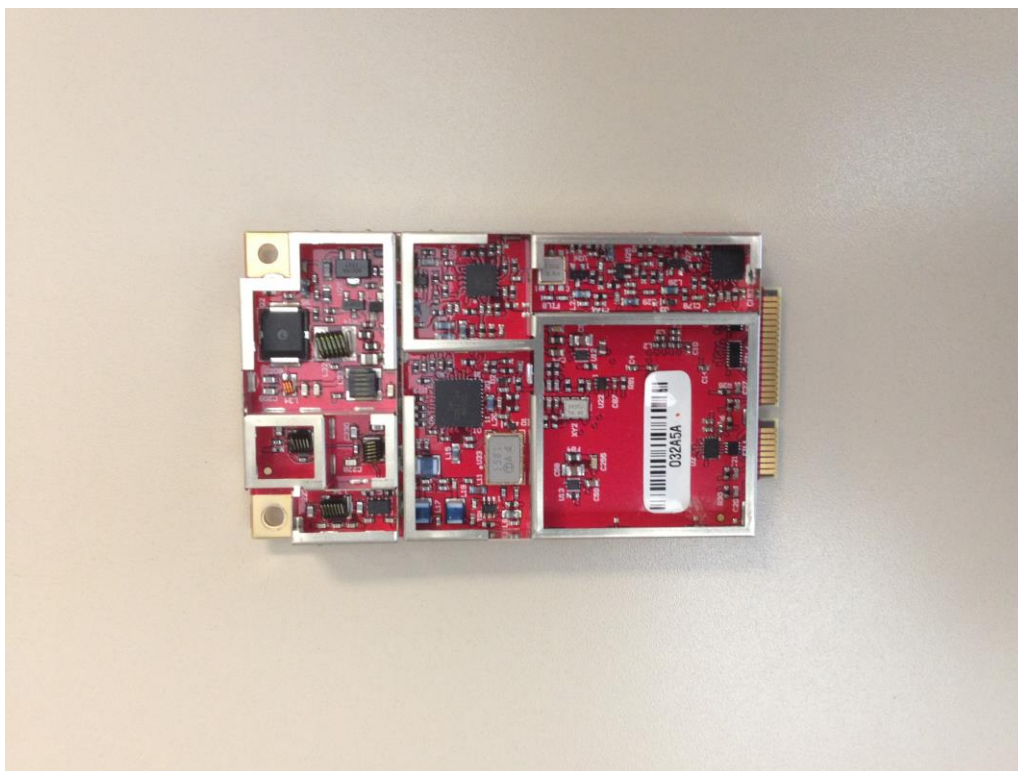


Figure 3.1 OG2 Modem top view without shielding

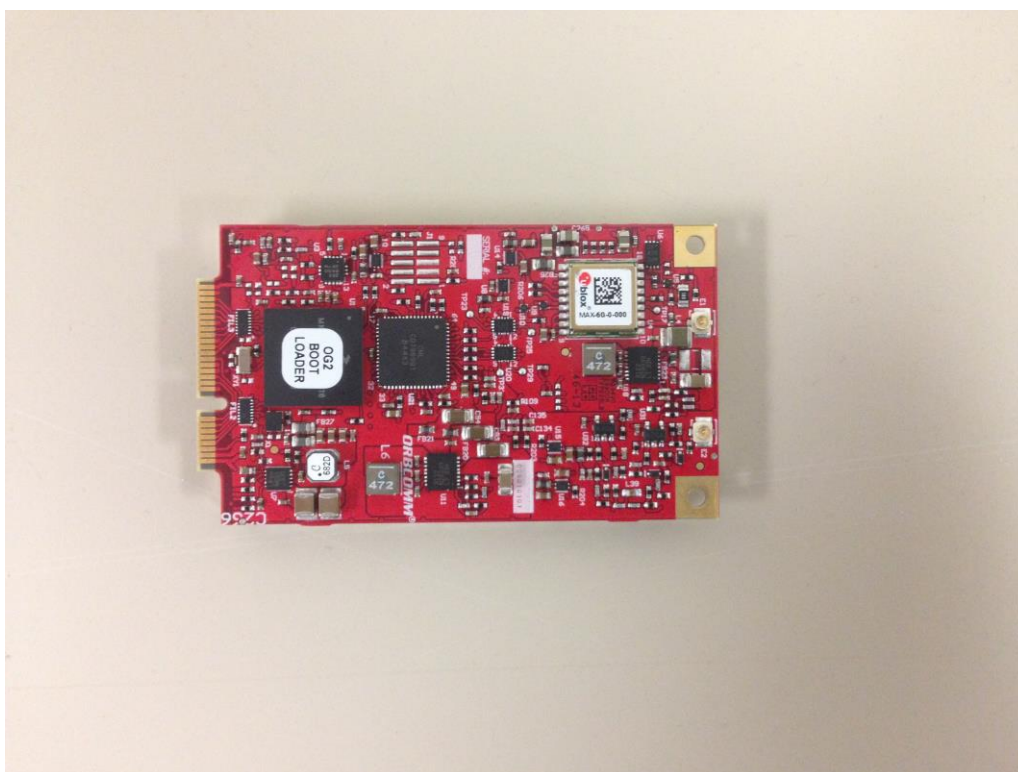


Figure 3.2 OG2 Modem bottom view without shielding