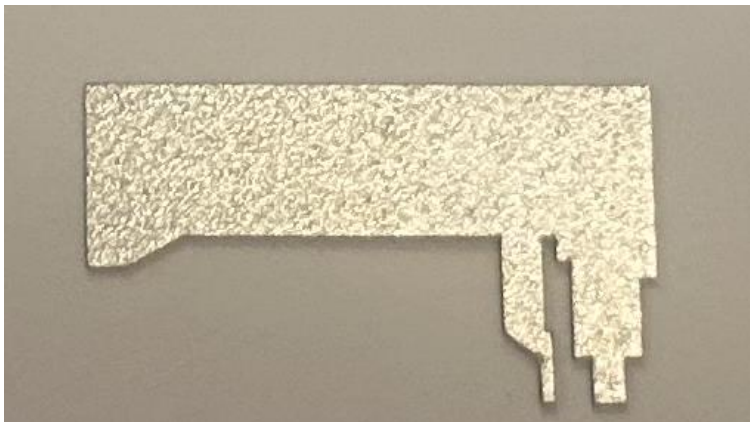


CT3600 BLE Antenna



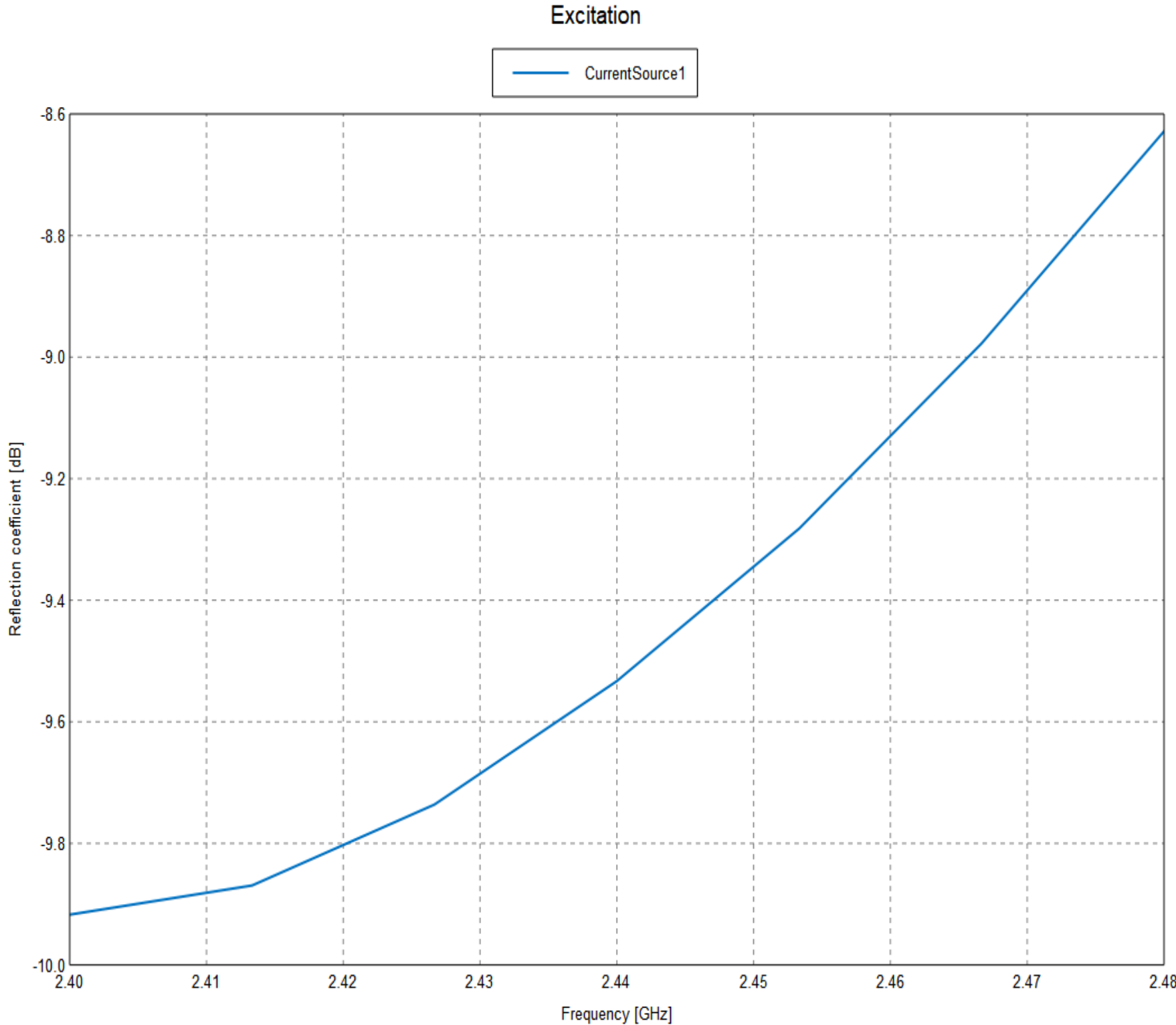
Internal Part Number: MD702301

F-Inverted Metal BLE Ant.

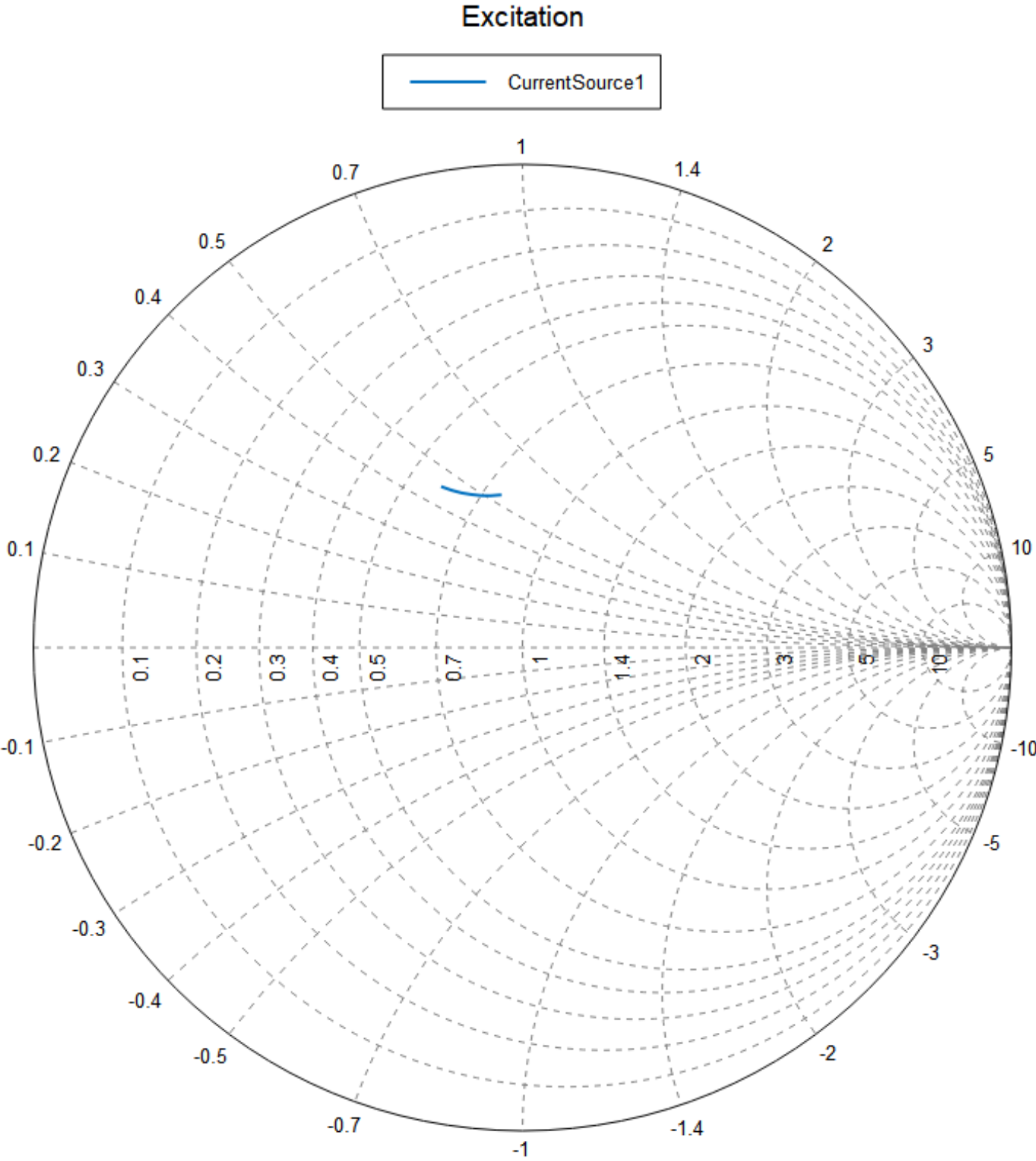
Technical data

Dimensions	24.18 mm ×13.6mm x 0.3 mm
Temperature range	-40 ~ +85°C
Frequency range	2400 - 2480 MHz
Impedance	50 Ohm
VSWR	≤ 2.2
Gain (realized gain)	3.64dBi max 2400MHz 3.73dBi max 2440MHz 3.72dBi max 2480MHz
Efficiency	88%

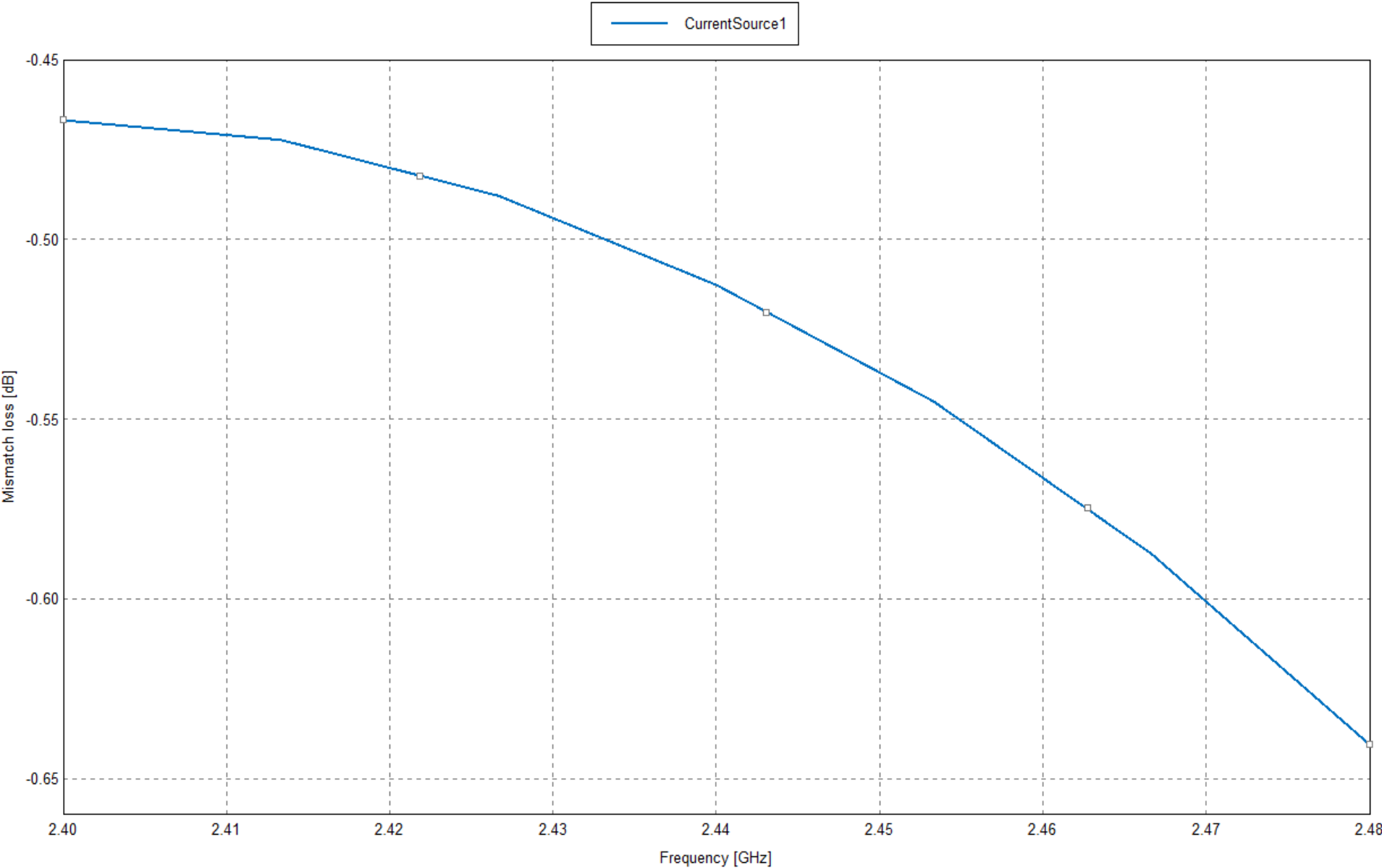
Antenna Reflection Coefficient:



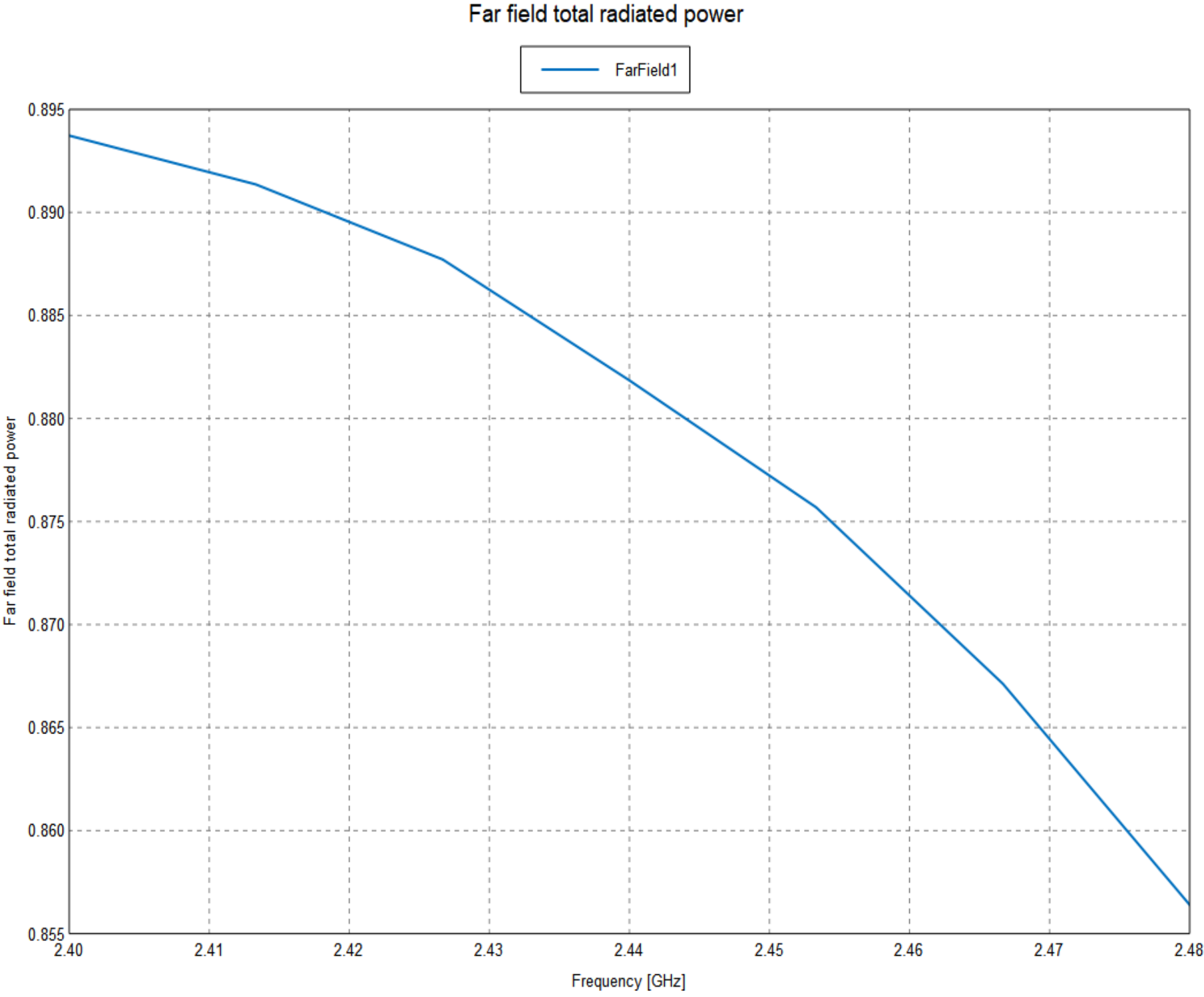
Antenna Excitation:



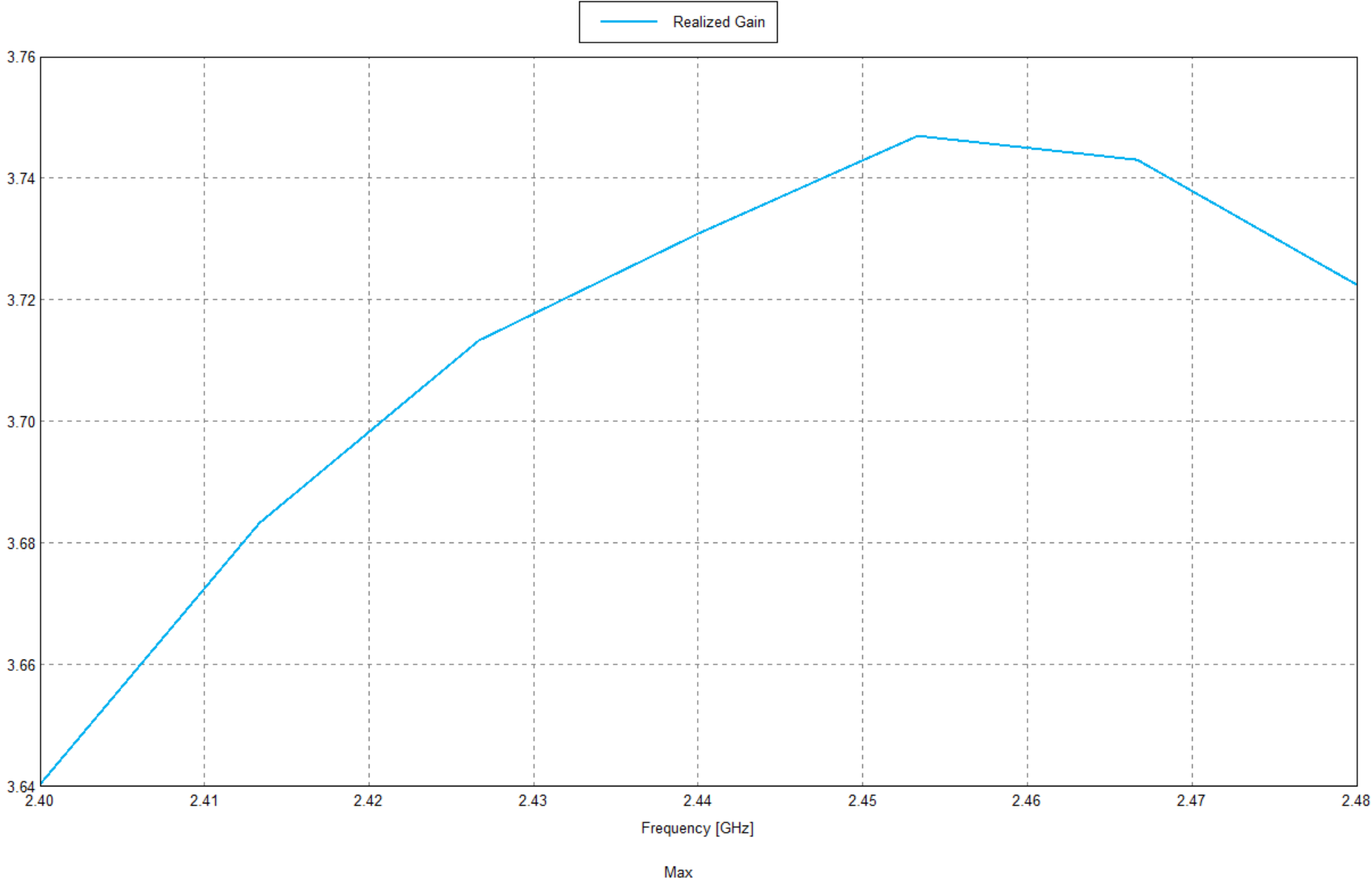
Antenna Mismatch Loss:



Antenna Far Field Total Radiated Power:

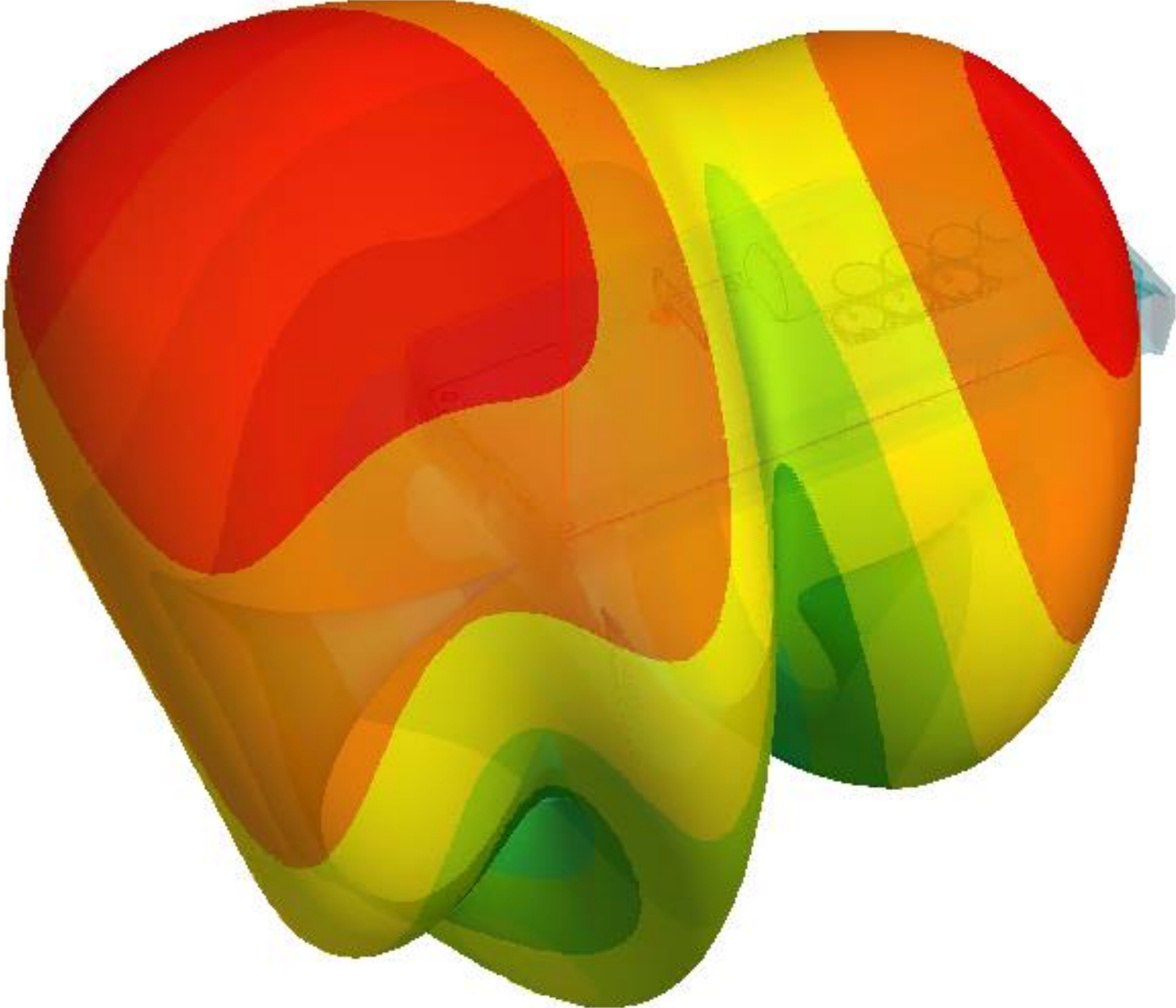
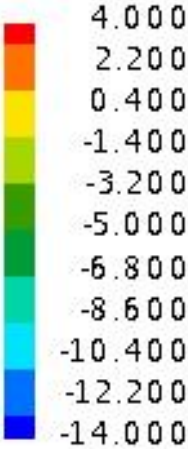


Antenna Max Realized Gain (dBi):



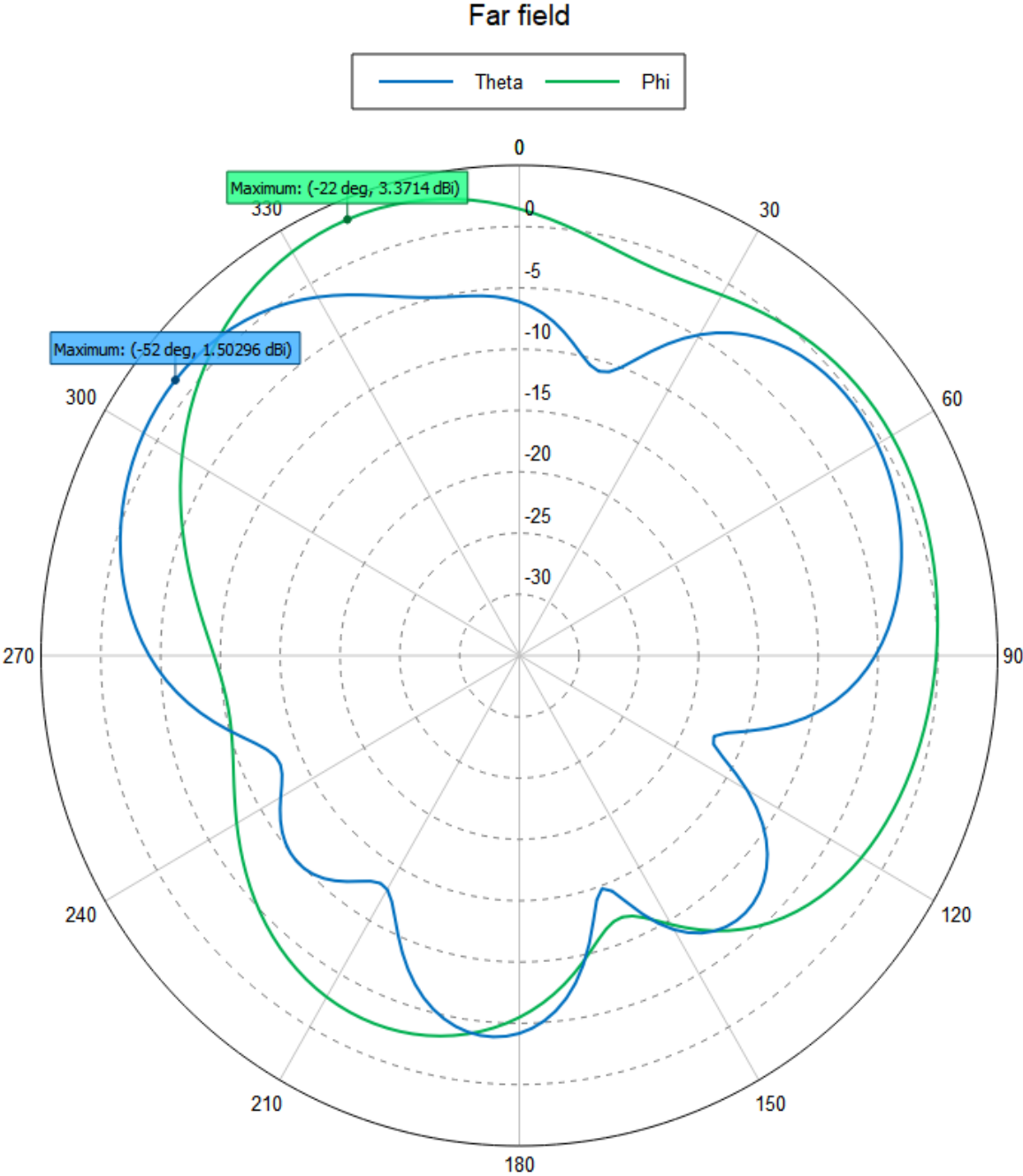
Antenna Radiation Patterns:

Total Realised gain [dBi]



Antenna Far Field:

2.4 GHZ, Phi=0 deg



Antenna Far Field:

2.4 GHZ, Phi=90 deg

