



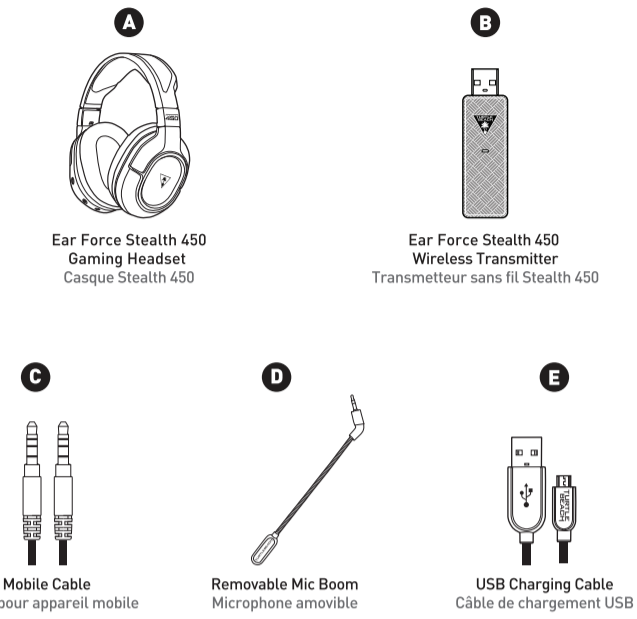
WIRELESS
FOR: PC
Mobile Gaming



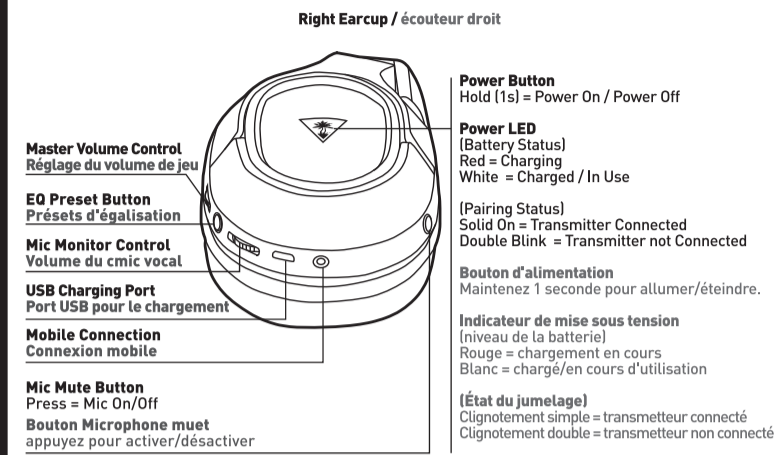
EAR FORCE
**STEALTH
450**
Quick Start Guide

For more detailed product information, visit: turtlebeach.com/Stealth450
www.turtlebeach.com/support

Package Contents
Contenu de la boîte



Headset Controls
Commandes sur casque

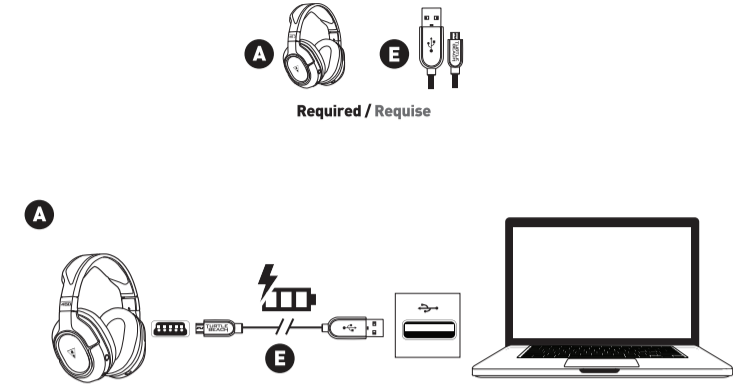


EQ Presets Présets d'égalisation	
Natural	Naturel
Bass Boost	Amplification des basses
Bass + Treble Boost	Amplification des basses et des aigus
Vocal Boost	Amplification vocale

Transmitter
Transmetteur



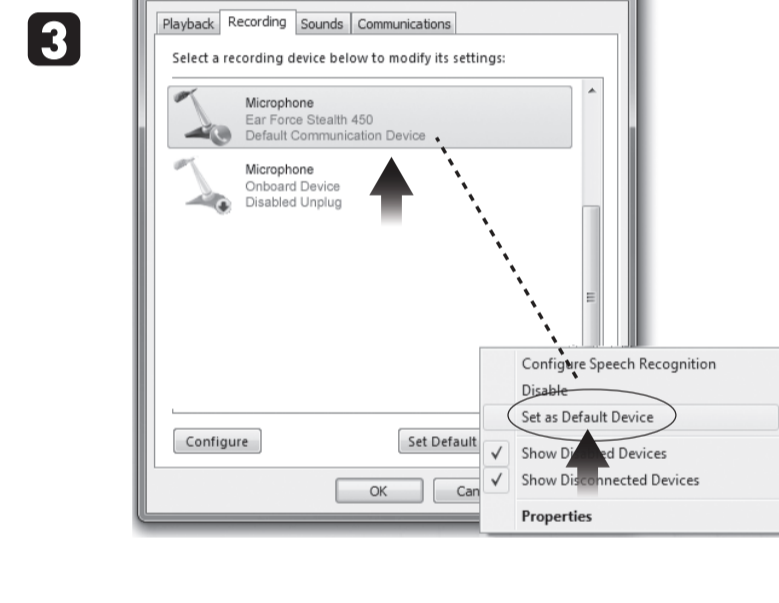
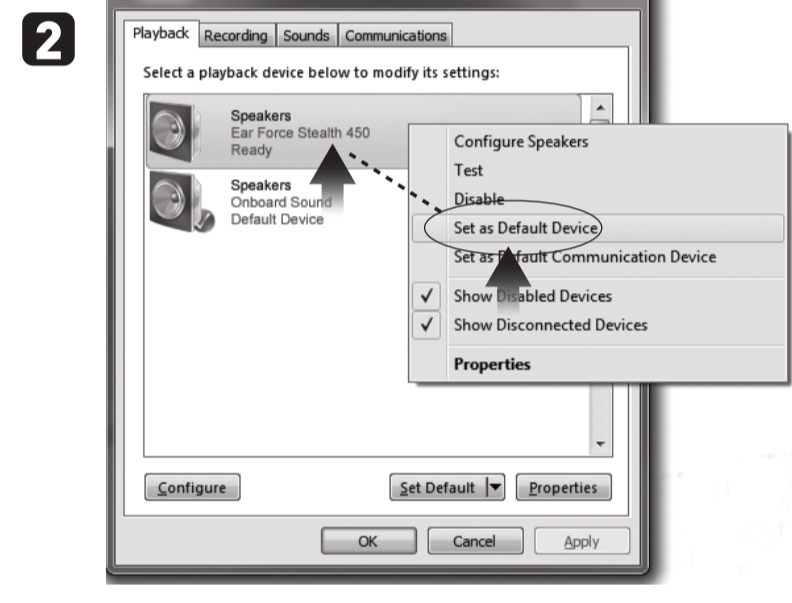
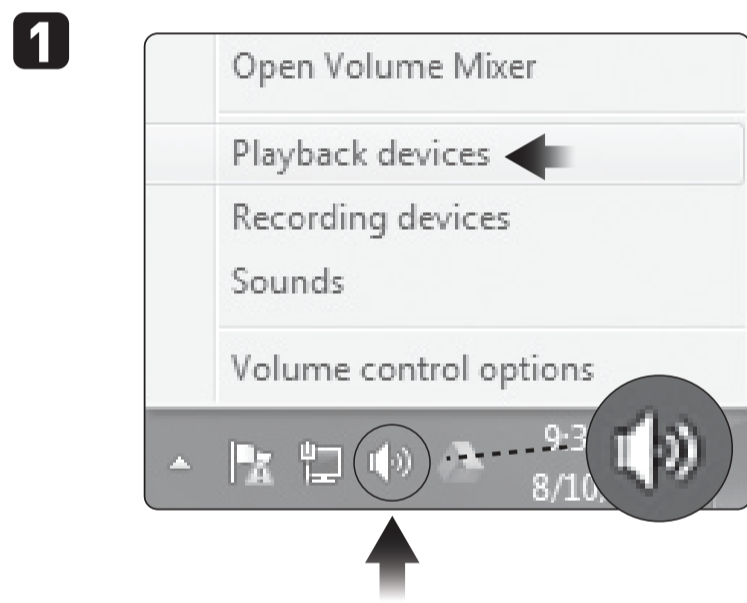
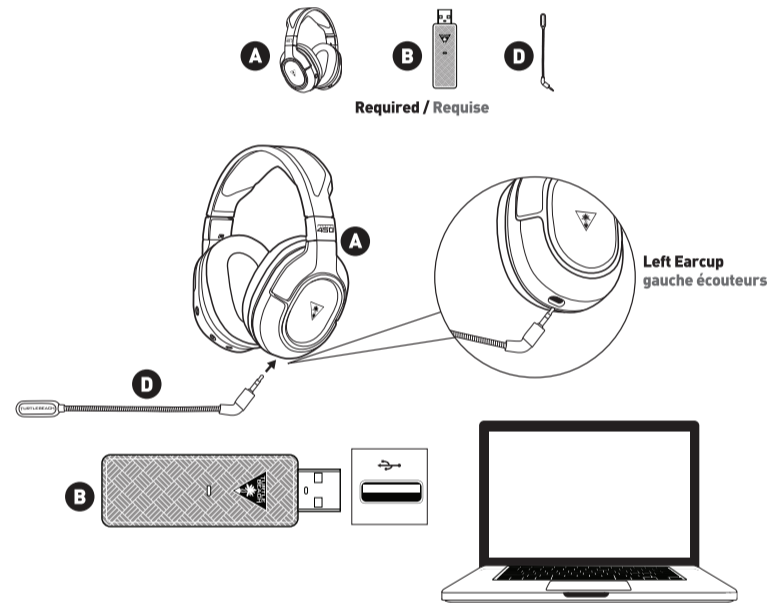
Charging
Chargement



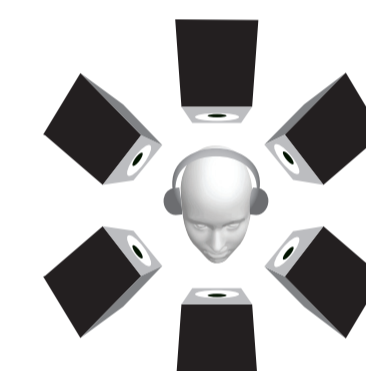
The Stealth 450 uses a rechargeable battery. Make sure to charge it regularly.
Headset Storage
Always charge your headset before storing it for any extended period of time (greater than 3 months). Never store the unit in temperatures above 113°F/45°C.

Le Stealth 450Z dispose d'une batterie rechargeable. Assurez-vous de la charger régulièrement.
Rangement du casque : Chargez toujours votre casque avant de le ranger pour une longue durée (plus de 3 mois). Ne stockez jamais le casque à des températures supérieures à 45°C.

PC Setup
Configuration PC



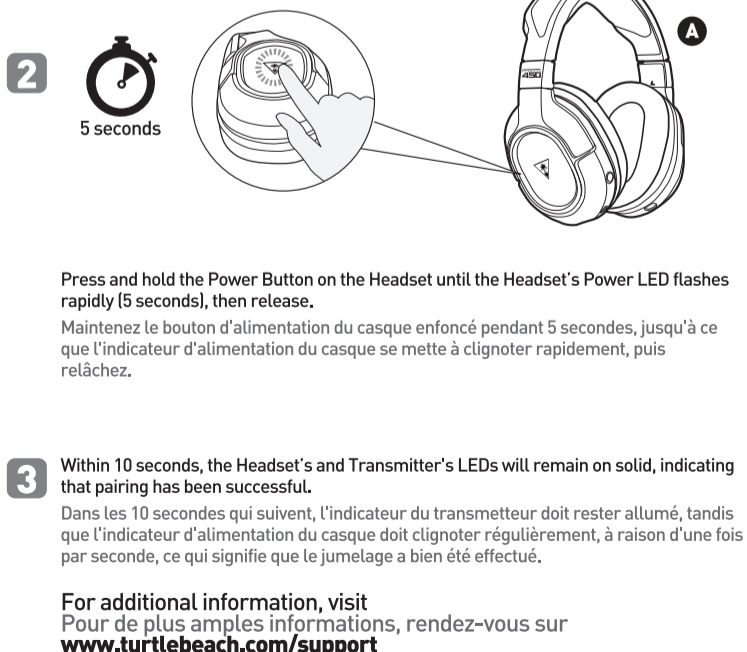
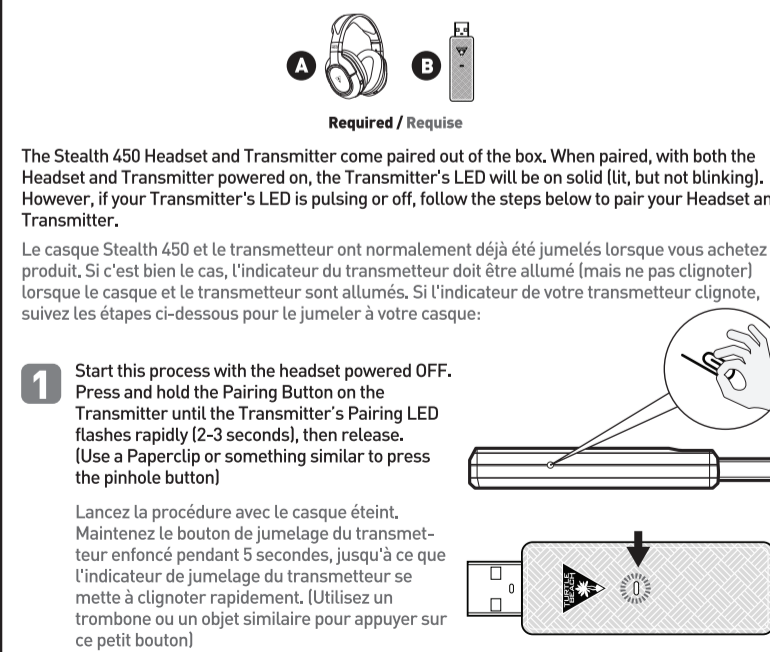
Surround Sound and Superhuman Hearing Setup
Configuration du son surround et Superhuman Hearing



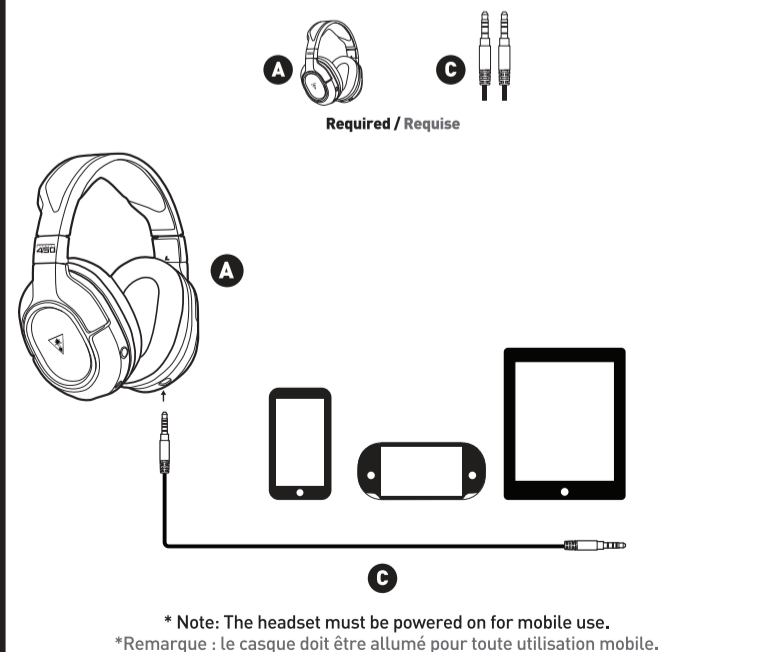
Visit www.turtlebeach.com/Stealth450 to download and install the Ear Force Stealth 450 DTS Headphone:X 7.1 software featuring Superhuman Hearing.

Rendez-vous sur www.turtlebeach.com/Stealth450 pour télécharger et installer le logiciel son surround DTS Headphone:X 7.1 avec la technologie Superhuman Hearing pour le casque Ear Force Stealth 450.

Pairing
Jumelage



Mobile Setup
Configuration mobile



Regulatory Compliance Statements for the EAR FORCE Stealth 450 RX & TX Models
Federal Communications Commission (FCC) Compliance Notices
 This section includes the following FCC statements for the EAR FORCE Stealth 450 RX & TX Models:
 - FCC ID: XGB-TB6160 (Headset)
 - FCC ID: XGB-TB6161 (Transmitter)
 - TB000-4160-01-F01 EAR FORCE STEALTH 450
 - TB000-4161-01-ACC_STEALTH 450 TRANSMITTER
 - Class B Interference Statement
 - RF Radiation Exposure & Hazard Warning
 - Non-Modification Statement
 - Deployment Statement

Class B Interference Statement
 This equipment has been tested and found to comply with the limits for a Class B digital device, pursuant to Part 15 of the FCC Rules. These limits are designed to provide reasonable protection against harmful interference in a residential installation. This equipment generates, uses, and can radiate radio frequency energy and, if not installed and used in accordance with the instructions, may cause harmful interference to radio communications. However, there is no guarantee that interference will not occur in a particular installation. If this equipment does cause harmful interference to radio or television reception, which can be determined by turning the equipment off and on, the user is encouraged to try to correct the interference by one or more of the following measures:
 - Reorient or relocate the receiving antenna.
 - Increase the separation between the equipment and receiver.
 - Connect the equipment into an outlet on a circuit different from that to which the receiver is connected.
 - Consult the dealer or an experienced radio/TV technician for help.

FCC Caution:
 This device complies with Part 15 of the FCC Rules. Operation is subject to the following two conditions: (1) This device may not cause harmful interference, and (2) this device must accept any interference received, including interference that may cause undesired operation.

RF Radiation Exposure & Hazard Statement
 To ensure compliance with FCC RF exposure requirements, this device must be installed in a location such that the antenna of the device will be greater than 2 cm (0.8 in.) away from all persons. Using higher gain antennas and types of antennas not covered under the FCC certification of this product is not allowed. Installers of the radio and end users of the product must adhere to the installation instructions provided in this manual. This transmitter must not be co-located or operated in conjunction with any other antenna or transmitter.

Non-Modification Statement
 Use only the supplied internal antenna. Unauthorized antennas, modifications, or attachments could damage the EAR FORCE Stealth 450 RX & TX Models and violate FCC regulations. Any changes or modifications not expressly approved by the party responsible for compliance could void the user's authority to operate this equipment. Please contact Turtle Beach for a list of approved 2.4 GHz antennas/antennas.

European Union and European Fair Trade Association Regulatory Compliance
 This equipment may be operated in the countries that comprise the member countries of the European Union and the European Fair Trade Association. These countries, listed below, are referred to as The European Community throughout this document:
 AUSTRIA, BELGIUM, BULGARIA, CYPRUS, CZECH REPUBLIC, DENMARK, ESTONIA, FINLAND, FRANCE, GERMANY, GREECE, HUNGARY, IRELAND, ITALY, LATVIA, LITHUANIA, LUXEMBOURG, MALTA, NETHERLANDS, POLAND, PORTUGAL, ROMANIA, SLOVAKIA, SLOVENIA, SPAIN, SWEDEN, UNITED KINGDOM, ICELAND, LICHTENSTEIN, NORWAY, SWITZERLAND

Declaration of Conformity
 Marking by this symbol:
 indicates compliance with the Essential Requirements of the R&TE Directive of the European Union (1999/5/EC). This equipment meets the following conformance standards:
 Safety: EN 60950-1:2006 + A1:2009 + A1:2010 + A12:2011 (T-Mark License), IEC 60950-1:2005 (2nd Edition) + Am 1:2009 (CB Scheme Report/Certificate), EN 50332-1:2000, EN 50332-2:2003, EN 71-3:2013
 EMC: EN 55022:2010, EN 301 489-1 v1.2 (2011-09), EN 301 489-17 v2.1.1 (2009-05), EN 61000-4-2: (2009), EN 61000-4-3: (2010), EN 61000-4-8: (2010)
 The products are licensed, as required, for additional country specific standards for the International Marketplace. Additional issued licenses available upon request.
 Radio: EN 300 328 v1.8.1 (2012-06) & EN 301 893 v1.7.1 (2012-06)
 SAR: EN 62231:2008
 Environmental : Low Voltage Directive 2006/95/EC, RoHS 2011/65/EU, WEEE 2012/19/EU, REACH 2006/1907/EC, Packaging 94/62/EC, Battery 2006/66/EC, Toys Safety Directive 2009/48/EC

Warning! This is a Class B product. In a domestic environment, this product may cause radio interference, in which case, the user may be required to take appropriate measures.
Achtung! Dieses ist ein Gerät der Funkstörgerneuerklasse B. In Wohnbereichen können bei Betrieb dieses Gerätes Rundfunkstörungen auftreten, in welchen Fällen der Benutzer für entsprechende Gegenmaßnahmen verantwortlich ist.
Attention! Ceci est un produit de Classe B. Dans un environnement domestique, ce produit risque de créer des interférences radioélectriques, il appartient alors à l'utilisateur de prendre les mesures spécifiques appropriées.

Canadian ICES Statements IC: IC: 3879A-6160 (Headset) & 3879A-6161 (Transmitter)
 This device complies with ICES-003 and RSS-210 of Industry Canada. Operation is subject to the following two conditions:
 1. This device may not cause interference, and
 2. This device must accept any interference, including interference that may cause undesired operation of the device.

Ce dispositif est conforme aux normes NMB003 et CNR-210 d'Industrie Canada.
 1. L'utilisation de ce dispositif est autorisée seulement aux conditions suivantes:
 2. Il ne doit pas produire de brouillage et l'utilisateur du dispositif doit être prêt à accepter tout brouillage radioélectrique reçu, même si ce brouillage est susceptible de compromettre le fonctionnement du dispositif.

To prevent radio interference to the licensed service (i.e. co-channel Mobile Satellite) this device is intended to be operated indoors and away from windows to provide maximum shielding. Equipment for its transmit antenna that is installed outdoors is subject to licensing and not supported by EAR FORCE Stealth 450 RX & TX Models.

RF Radiation Exposure & Hazard Statement
 To ensure compliance with RSS-102 RF exposure requirements, this device must be installed in a location such that the antenna of the device will be greater than 2 cm (0.8 in.) away from all persons. Using higher gain antennas and types of antennas not covered under the IC certification of this product is not allowed. Installers of the radio and end users of the product must adhere to the installation instructions provided in this manual. This transmitter must not be co-located or operated in conjunction with any other antenna or transmitter.

* Note: The headset must be powered on for mobile use.
*Remarque : le casque doit être allumé pour toute utilisation mobile.

Please visit the following URL for a complete copy of the declaration of conformity: <http://www.turtlebeach.com/nomologation>