



#1 IN GAMING AUDIO

WIRELESS
For: PC | Mobile

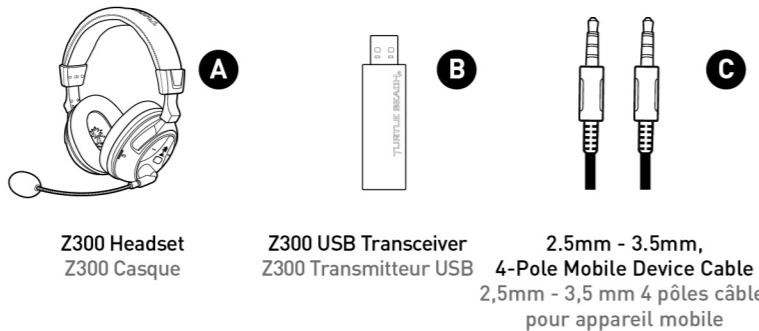
EAR FORCE® Z300 Quick Start Guide

For the full user guide or set up video,
please go to <http://www.turtlebeach.com/products/z300>

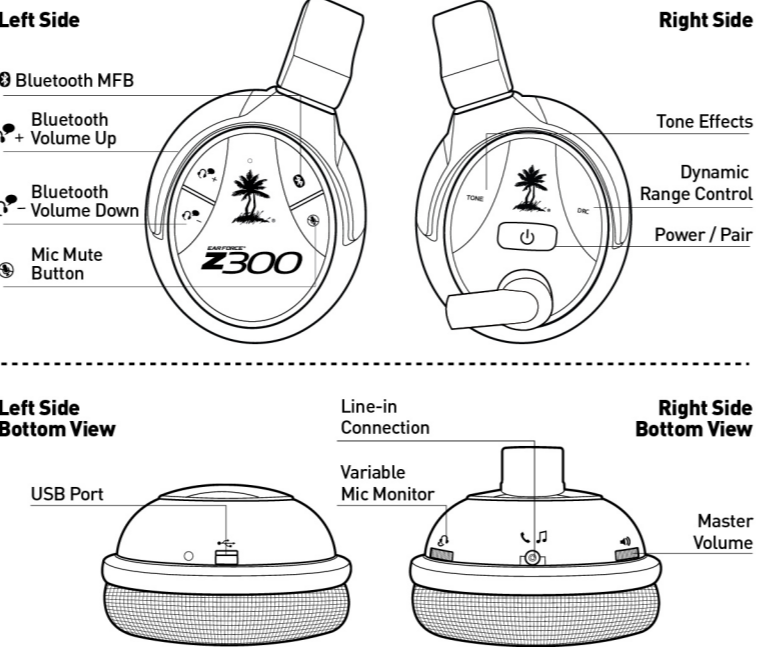
Watch Turtle Beach product training videos at:
youtube.com/TurtleBeachVideos Product support and warranty information:
TurtleBeach.com/support



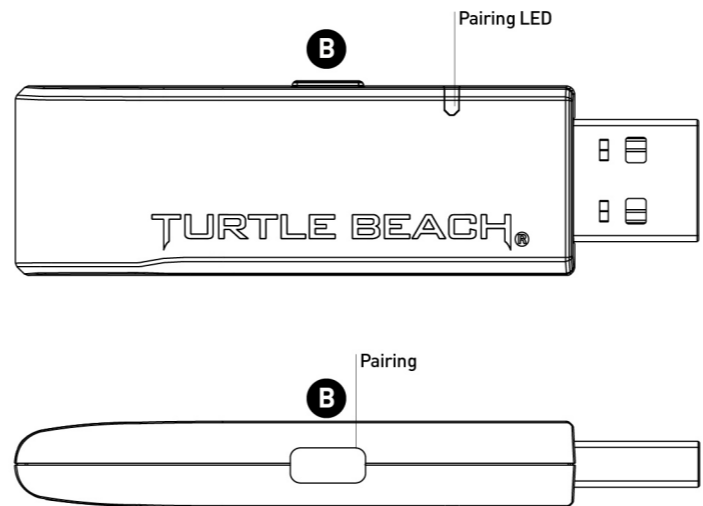
Package Contents | Contenu de la boîte



Headset Functions | Fonction du casque



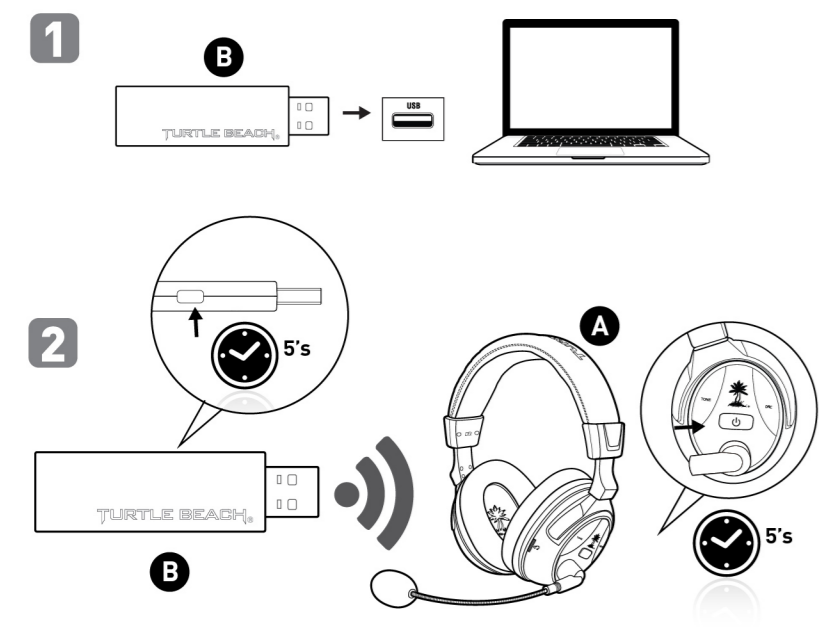
Transmitter Functions | Fonction transmetteur



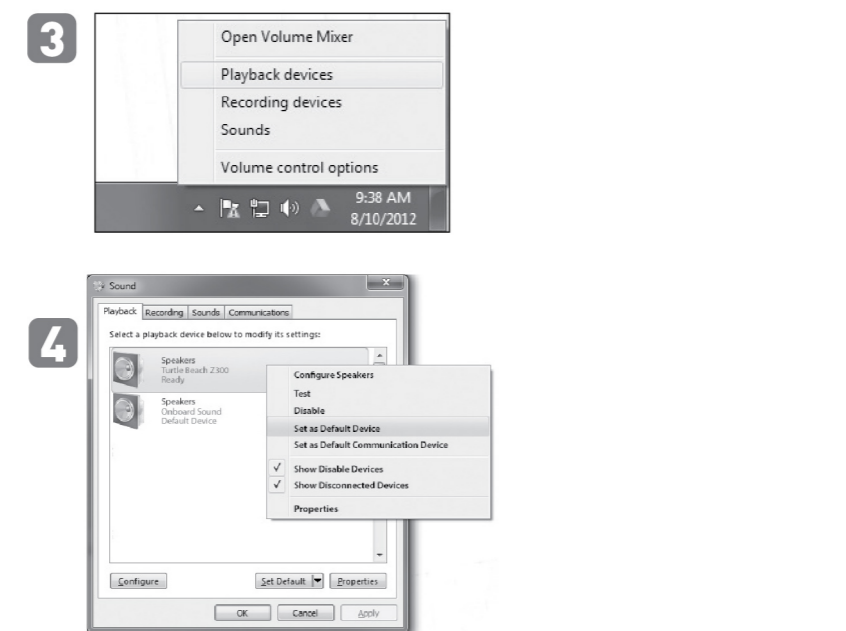
Regulatory Compliance Statements for the EAR FORCE Z300 RX & TX Models
Federal Communications Commission (FCC) Compliance Notices
 This section includes the following FCC statements for the EAR FORCE Z300 RX & TX Models:
 • FCC ID: XBB-TB404 & XBB-TB405
 • Class B Interference Statement
 • RF Radiation Exposure & Hazard Warning
 • Non-Modification Statement
 • Deployment Statement
Class B Interference Statement
 This equipment has been tested and found to comply with the limits for a Class B digital device, pursuant to Part 15 of the FCC Rules. These limits are designed to provide reasonable protection against harmful interference in a residential installation. This equipment generates, uses, and can radiate radio frequency energy and, if not installed and used in accordance with the instructions, may cause harmful interference to radio communications. However, there is no guarantee that interference will not occur in a particular installation. If this equipment does cause harmful interference to radio or television reception, which can be determined by turning the equipment off and on, the user is encouraged to try to correct the interference by one or more of the following measures:
 • Reorient or relocate the receiving antenna.
 • Increase the separation between the equipment and receiver.
 • Connect the equipment into an outlet on a circuit different from that to which the receiver is connected.
 • Consult the dealer or an experienced radio/TV technician for help.
FCC Caution:
 This device complies with Part 15 of the FCC Rules. Operation is subject to the following two conditions: (1) This device may not cause harmful interference, and (2) this device must accept any interference received, including interference that may cause undesired operation.
RF Radiation Exposure & Hazard Statement
 To ensure compliance with FCC RF exposure requirements, this device must be installed in a location such that the antenna of the device will be greater than 20 cm (8 in.) from all persons. Using higher gain antennas and types of antennas not covered under the FCC certification of this product is not allowed. Installers of the radio and end users of the product must adhere to the installation instructions provided in this manual. This transmitter must not be co-located or operated in conjunction with any other antenna or transmitter.
Non-Modification Statement
 Use only the supplied internal antenna. Unauthorized antennas, modifications, or attachments could damage the EAR FORCE Z300 RX & TX Models and violate FCC regulations. Any changes or modifications not expressly approved by the party responsible for compliance could void the user's authority to operate this equipment. Please contact Turtle Beach for a list of approved 2.4 GHz and 5.0 GHz antennas.
Deployment Statement
 This product is certified for indoor deployment only in the 5150 - 5250 MHz band. Do not install or use this product outdoors in that frequency band in the United States.
Canadian ICES Statements
 IC: 3879A-TB404 & 3879A-TB405
 This device complies with ICES-003 and RSS-210 of Industry Canada. Operation is subject to the following two conditions:
 1. This device may not cause interference, and
 2. This device must accept any interference, including interference that may cause undesired operation of the device.
 Ce dispositif est conforme aux normes NMB003 et CNR-210 d'Industrie Canada.
 1. L'utilisation de ce dispositif est autorisée seulement aux conditions suivantes:
 2. Il ne doit pas produire de brouillage et l'utilisateur du dispositif doit être prêt à accepter tout brouillage radioélectrique reçu, même si ce brouillage est susceptible de compromettre le fonctionnement du dispositif.
 To prevent radio interference to the licensed service (i.e. co-channel Mobile Satellite systems) this device is intended to be operated indoors and away from windows to provide maximum shielding. Equipment for its transmit antenna that is installed outdoors is subject to licensing and not supported by EAR FORCE Z300 RX & TX Models.
RF Radiation Exposure & Hazard Statement
 To ensure compliance with RSS-102 RF exposure requirements, this device must be installed in a location such that the antenna of the device will be greater than 20 cm (8 in.) away from all persons. Using higher gain antennas and types of antennas not covered under the IC certification of this product is not allowed. Installers of the radio and end users of the product must adhere to the installation instructions provided in this manual. This transmitter must not be co-located or operated in conjunction with any other antenna or transmitter.

Exposition aux radiations RF & Mention de danger
 Pour assurer la conformité avec les exigences RSS-102 d'exposition aux RF (Radio Fréquences), cet appareil doit être installé dans un endroit où l'antenne de l'appareil sera située à une distance de plus de 20 cm (8 po) de toutes personnes. L'utilisation d'antennes à gain plus élevé et les types d'antennes qui ne sont pas couverts en vertu de la certification IC de ce produit n'est pas autorisée. Les installateurs de la radio et les utilisateurs du produit final doivent se conformer aux instructions d'installation fournies dans ce manuel. Cet émetteur ne doit pas être co-implanté ou exploité en conjonction avec toute autre antenne ou transmetteur.
Deployment Statement
 This product is certified for indoor deployment only in the 5150 - 5250 MHz band. Do not install or use this product outdoors in that frequency band in Canada.
Déclaration de déploiement
 Ce produit est certifié pour le déploiement à l'intérieur tout en rencontrant les limites de cette bande de fréquences: 5150 - 5250 MHz. Ne pas installer ou utiliser ce produit à l'extérieur au Canada, si cette bande de fréquences ne peut être rencontrée.
 European Union and European Fair Trade Association Regulatory Compliance
 This equipment may be operated in the countries that comprise the member countries of the European Union and the European Fair Trade Association.
Declaration of Conformity
 Marking by this symbol:
 indicates compliance with the Essential Requirements of the R&TTE Directive of the European Union (1999/5/EC). This equipment meets the following conformance standards:
 Safety: EN 60950-1:2005 (2nd Edition) + Am 1:2009 (CB Scheme Report/Certificate), EN 50332-1:2005, EN50332-2:2003
 EMC: EN 55022:2010, EN 301 489-1 v1.9.2 (2011-09), EN 301 489-17 v2.2.1 (2012-09), EN 10100-4-2:2008-05, EN 61000-4-3:2010-04, EN 61000-4-4:2011-03, EN 61000-4-6:2005
 Radio: EN 300 328 v1.7.1 (2006-10) & EN 301 893 v1.6.1 (2011-11)
 SAR: EN 62311:2008
 Environmental: Low Voltage Directive 2004/95/EC, RoHS 2002/95/EC, WEEE 2002/96/EC, REACH 2006/1907/EC, Packaging 94/42/EC, Battery 2006/66/EC
Warning!
 This is a Class B product. In a domestic environment, this product may cause radio interference, in which case, the user may be required to take appropriate measures.
Achtung!
 Dieses ist ein Gerät der Funkstörwertklasse B. In Wohnbereichen können bei Betrieb dieses Gerätes Rundfunkstörungen auftreten, in welchen Fällen der Benutzer für entsprechende Gegenmaßnahmen verantwortlich ist.
Attention!
 Ceci est un produit de Classe B. Dans un environnement domestique, ce produit risque de créer des interférences radioélectriques, il appartient alors à l'utilisateur de prendre les mesures spécifiques appropriées.

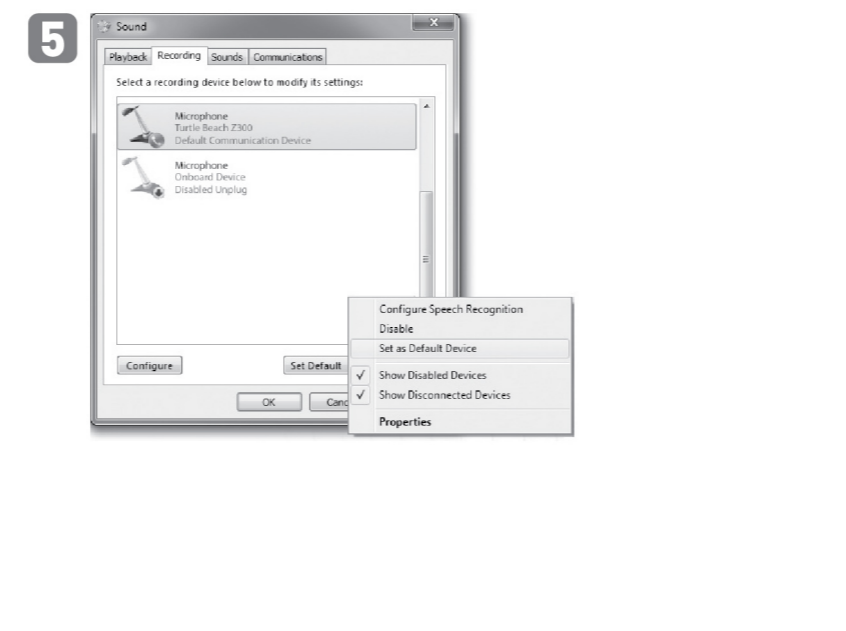
PC Hardware Setup | Configuration Matérielle PC



PC System Settings | Paramètres système PC



Bluetooth Setup | Configuration du Bluetooth®



Bluetooth Setup | Configuration du Bluetooth®



Bluetooth Setup | Configuration du Bluetooth®



Wired Setup | Configuration à fil

