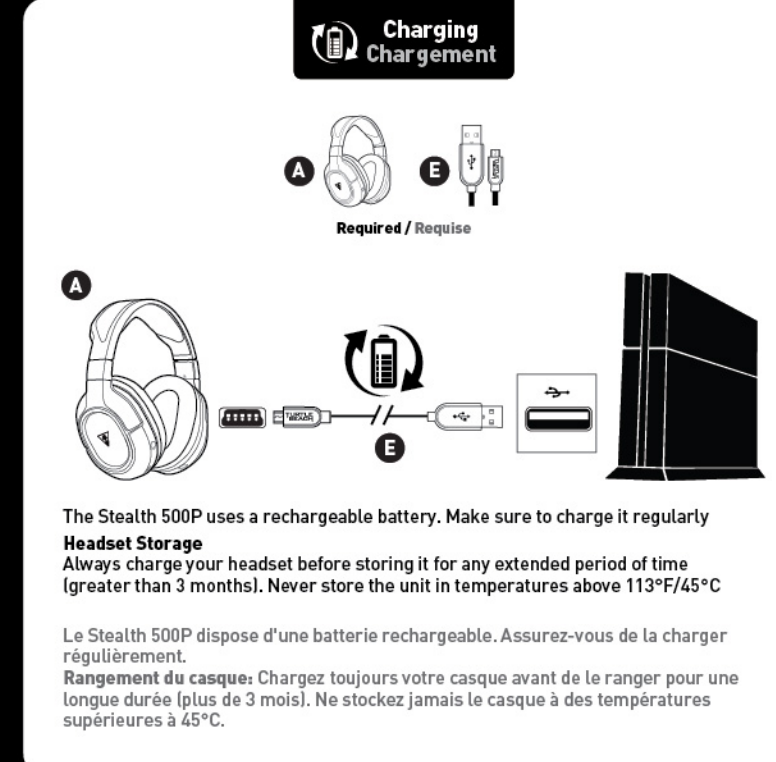
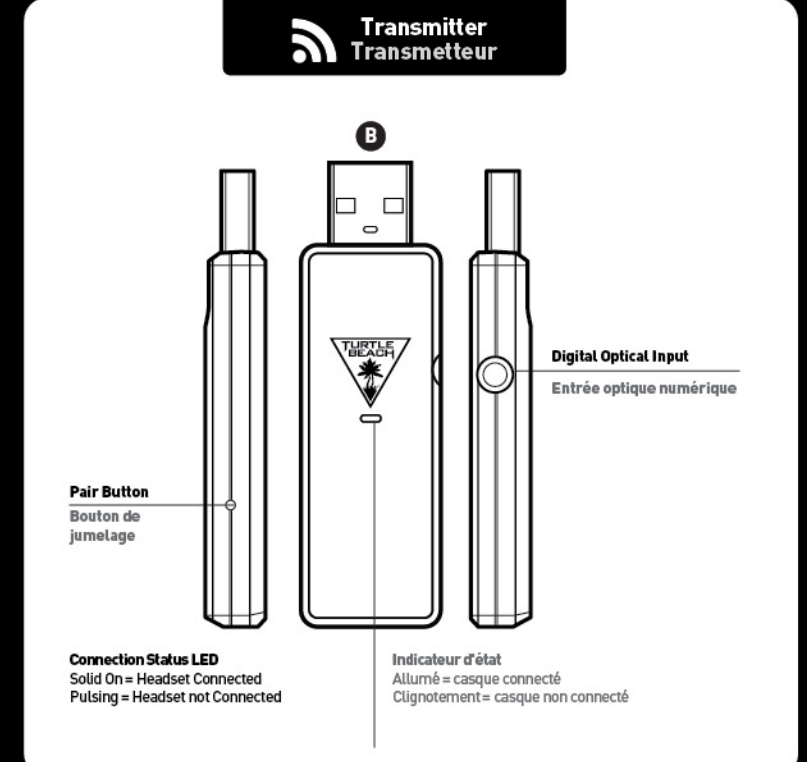
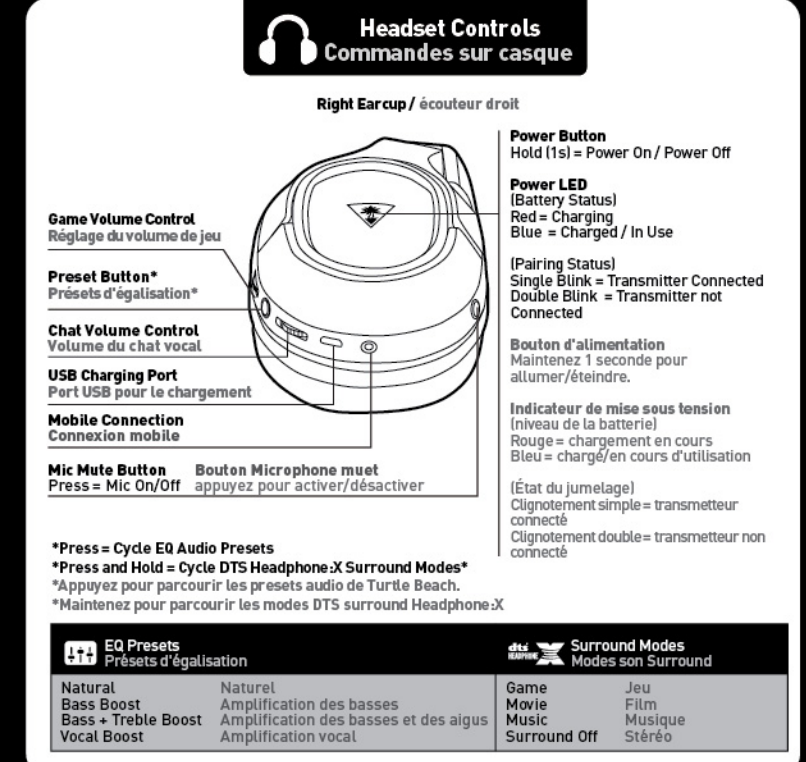
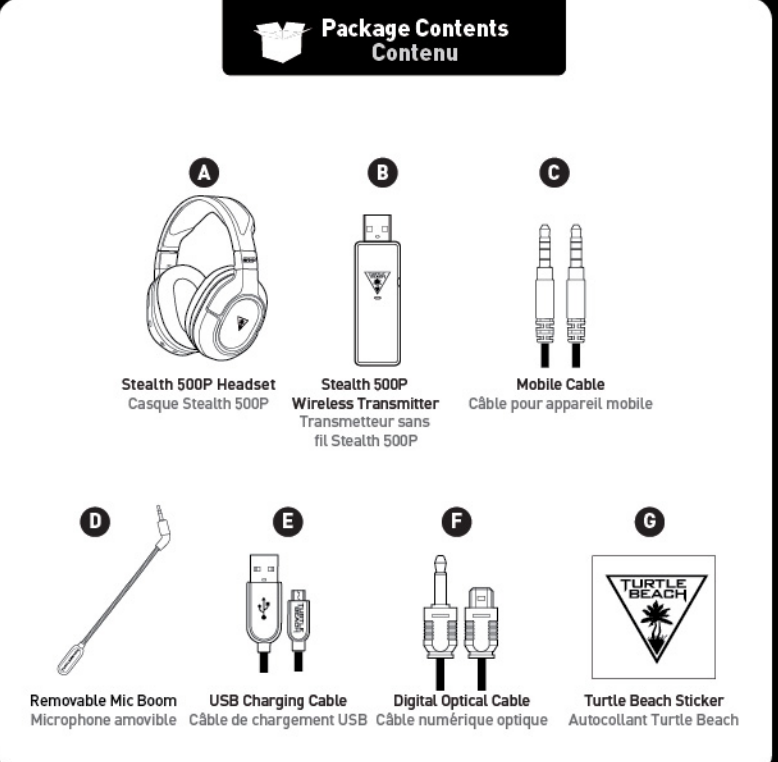




For more detailed product information, visit www.turtlebeach.com/Stealth500P
For additional console compatibility and connection information visit www.turtlebeach.com/connct



Designer:	Sal Juarez
Product:	Stealth 500P
Project:	QSG
Date:	JUL / 16 / 14
Scale:	100%

COMMENTS

Please do not print this layer!!!
 • 100% actual size
 • Refer to video on how to fold

SPECIFICATIONS

Printing information

BLK + WHT

QSG Paper Weight (80g) Foldout

Folding Line

QSG REFERENCE

