

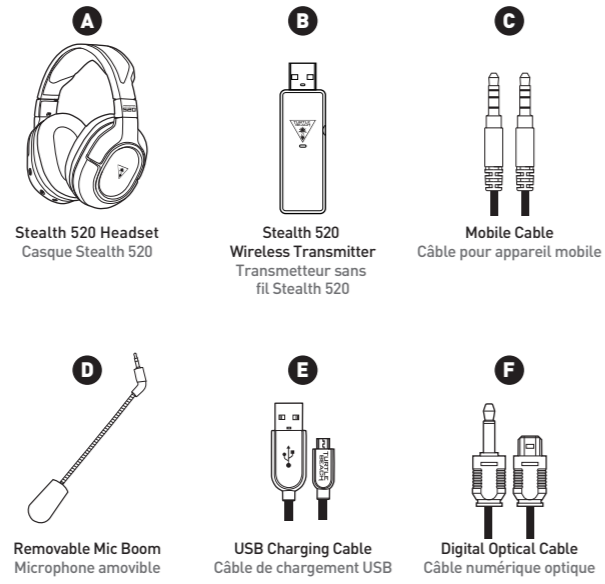
EAR FORCE STEALTH 520

QUICK START GUIDE GUIDE DE DÉMARRAGE RAPIDE

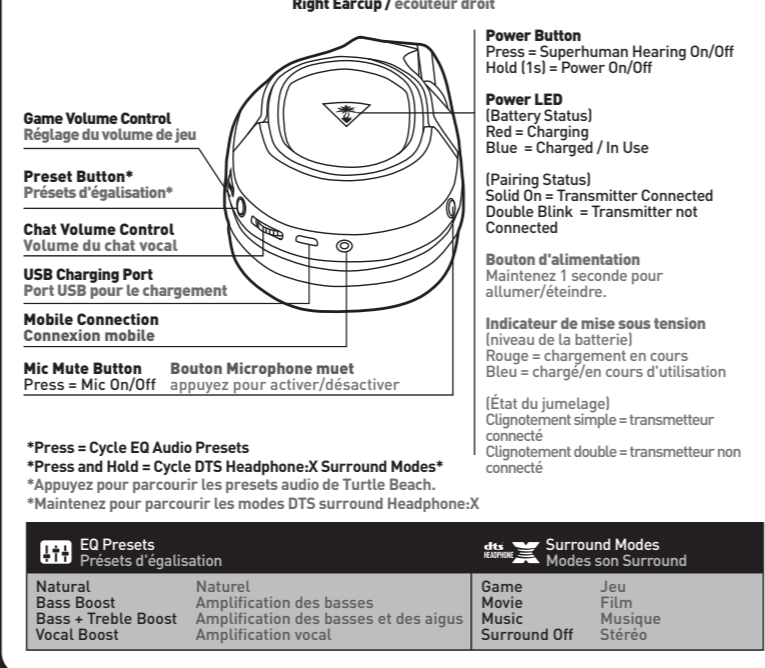
IMPORTANT À LIRE
READ BEFORE USING AVANT TOUTE UTILISATION

Any Questions? Des questions ?
turtlebeach.com/Stealth520 | turtlebeach.com/Support
For additional console compatibility and connection information visit:
www.turtlebeach.com/connect

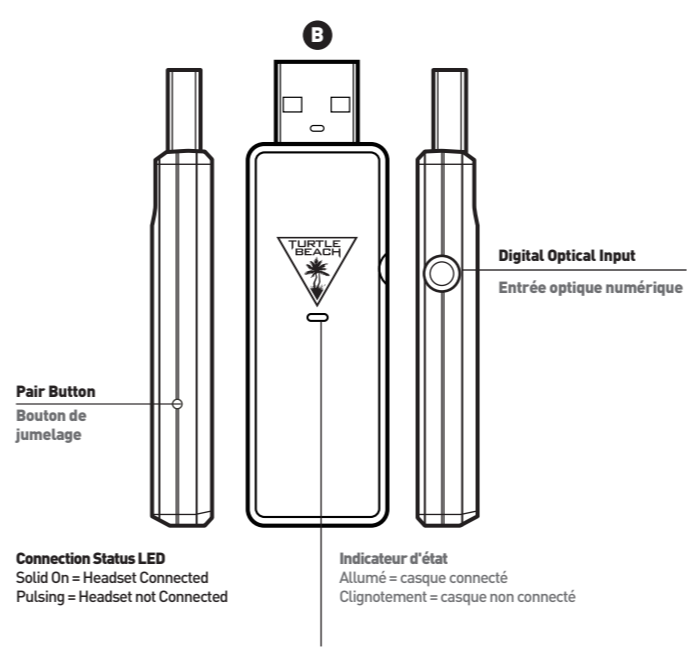
Package Contents Contenu



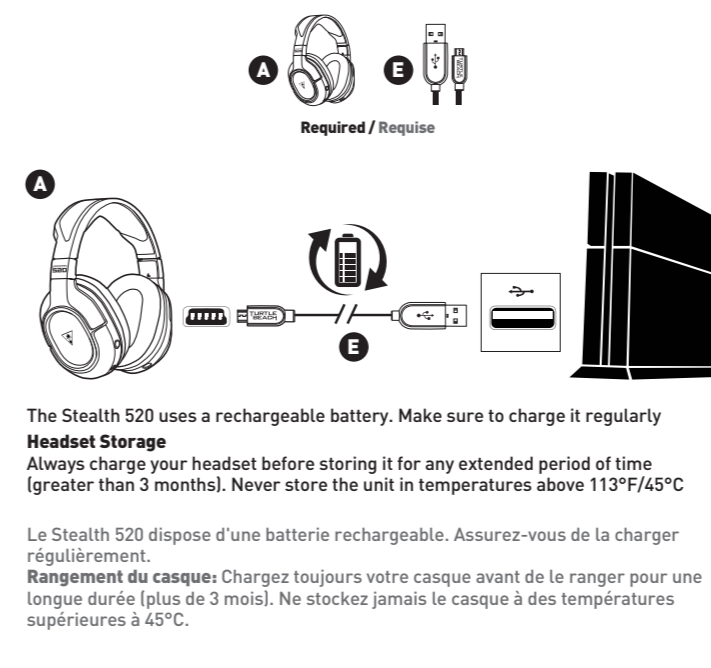
Headset Controls Commandes sur casque



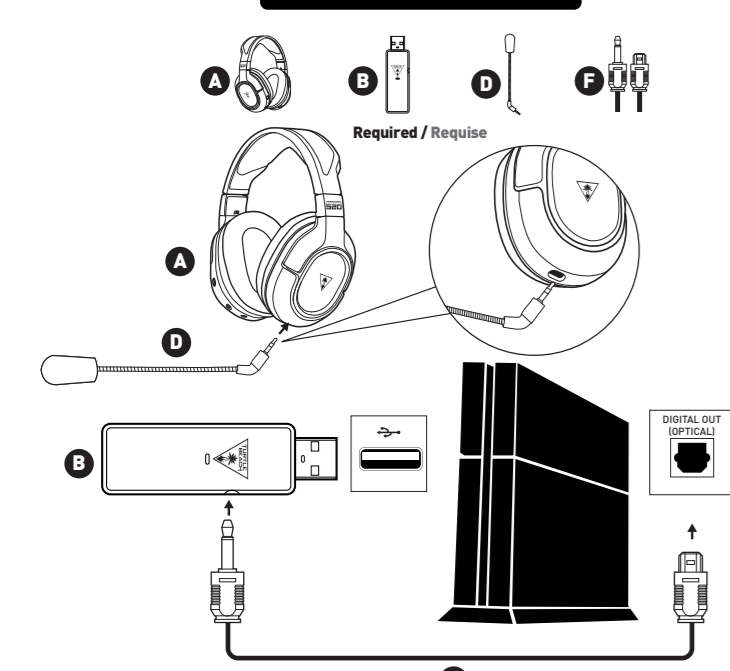
Transmitter Transmetteur



Charging Recharge



PS4™ Setup Configuration PS4™



1. Go to Settings >> Sound and Screen >> Audio Output Settings >> Primary Output Port >> Digital Out (OPTICAL)
2. Select Only Dolby Digital 5.1 ch.
Do NOT select DTS 5.1 ch.

1. Paramètres >> Son et écran >> Paramètres de sortie audio >> Port de sortie principal >> DIGITAL OUT (OPTICAL)
2. Only Dolby 5.1 ch.
L'option DTS 5.1 ch. ne doit PAS être sélectionnée.

3. Go to Settings >> Sound and Screen >> Audio Output Settings >> Audio Format (Priority) >> Select Bitstream (Dolby)

3. Sélectionnez Paramètres >> Son et écran >> Paramètres de sortie audio >> Format audio (Priority) >> Sélectionnez Bitstream (Dolby)

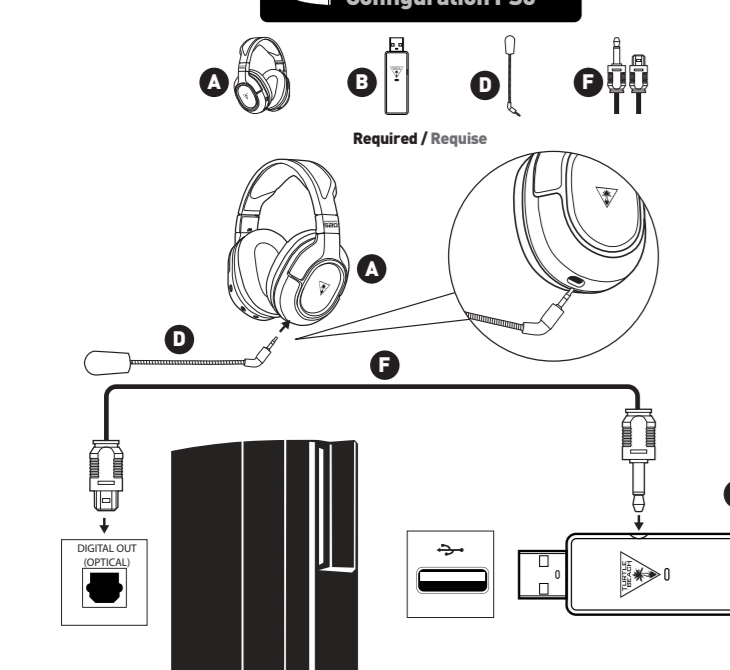
5. Go to Settings >> Devices >> Audio Devices >> Select USB Headset/Turtle Beach Stealth 520 Chat for Input & Output Device
6. Set Volume Control (Headphones) level to maximum

5. Ouvrez Paramètres >> Périphériques >> Périphériques audio >> Dans Périphérique d'entrée et Périphérique de sortie, sélectionnez Casque USB (Turtle Beach Stealth 520 Chat) pour les dispositifs de entrée et de sortie
6. Dans Sortie vers le casque, sélectionnez Audio du Chat & Le niveau de volume du paramètre Réglage du volume (casque) doit être au maximum

9. Select Adjust Microphone Level and follow the on-screen instructions to calibrate your microphone

9. Sélectionnez Régler le niveau du microphone et suivez les instructions à l'écran pour calibrer votre microphone

PS3™ Setup Configuration PS3™



1. Go to Settings >> Accessory Settings >> Audio Device Settings
2. Select the Input Device and Output Device fields to Turtle Beach Stealth 520.

1. Ouvrez Paramètres >> Paramètres accessoires >> Paramètres périphériques audio
2. Définissez "Turtle Beach Stealth 520" comme Périphérique d'entrée et Périphérique de sortie.

3. Go to Settings >> Sound Settings >> Audio Output Settings >> Optical Digital

3. Ouvrez Paramètres >> Paramètres son >> Paramètres de sortie audio >> Numérique optique

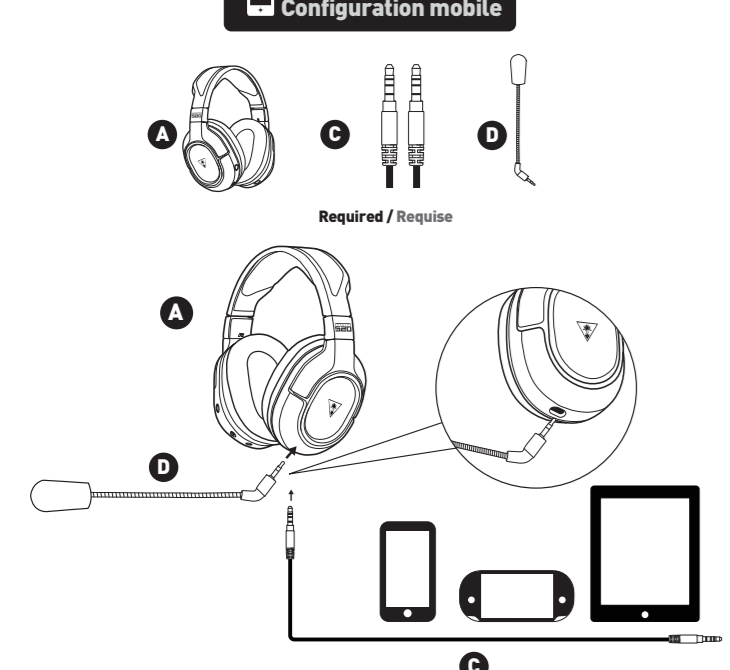
4. Check ONLY Dolby Digital 5.1 Ch.

4. Cochez l'UNIQUEMENT Dolby Digital 5.1 canaux.

5. Go to Settings >> Sound Settings >> Audio Multi-Output >> Set to On

5. Ouvrez Paramètres >> Paramètres sons >> Sortie audio multiple >> Choisissez On.

Mobile Setup Configuration mobile



**Microphone Setup
Configuration Microphone**

Make sure the line guide below the Microphone Foam Cover is facing toward your mouth during use. Assurez-vous que le repère situé sous la mousse couvrante du micro soit orienté vers votre bouche lors de toute utilisation.

Pairing Jumelage

The Stealth 520 Headset and Transmitter come paired out of the box. When paired, with both the Headset and Transmitter powered on, the Transmitter's LED will be on solid (lit, but not blinking). However, if your Transmitter's LED is double-blinking, follow the steps below to pair your Headset and Transmitter.

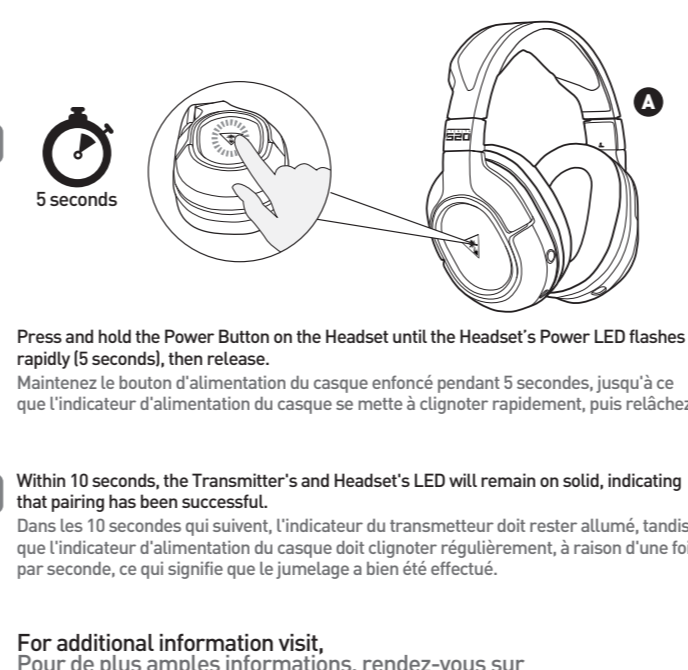
Le casque Stealth 520 et le transmetteur devaient avoir été jumelés lorsque vous achetez le produit. Si c'est bien le cas, l'indicateur du transmetteur doit être allumé (mais ne pas clignoter) lorsque le casque et le transmetteur sont allumés. Si l'indicateur de votre transmetteur clignote, suivez les étapes ci-dessous pour le jumeler à votre casque.

1 Start this process with the headset powered OFF. Press and hold the Pairing Button on the Transmitter until the Transmitter's Pairing LED flashes rapidly (5 seconds), then release. (Use a Paperclip or something similar to press the Pinhole button)

Lancez la procédure avec le casque éteint. Maintenez le bouton d'alimentation du casque enfoncé pendant 5 secondes, jusqu'à ce que l'indicateur d'alimentation du casque se mette à clignoter rapidement, puis relâchez.

2 Within 10 seconds, the Transmitter's and Headset's LED will remain on solid, indicating that pairing has been successful.

Dans les 10 secondes qui suivent, l'indicateur du transmetteur doit rester allumé, tandis que l'indicateur d'alimentation du casque doit clignoter régulièrement, à raison d'un fois par seconde, ce qui signifie que le jumelage a été effectué.



For additional information visit, Pour de plus amples informations, rendez-vous sur www.turtlebeach.com/support

PKG DESIGN DEPT

Designer: Audrey Javier
Product: Stealth 520
Project: QSG
Date: MAY / 06 / 16
Scale: 100%

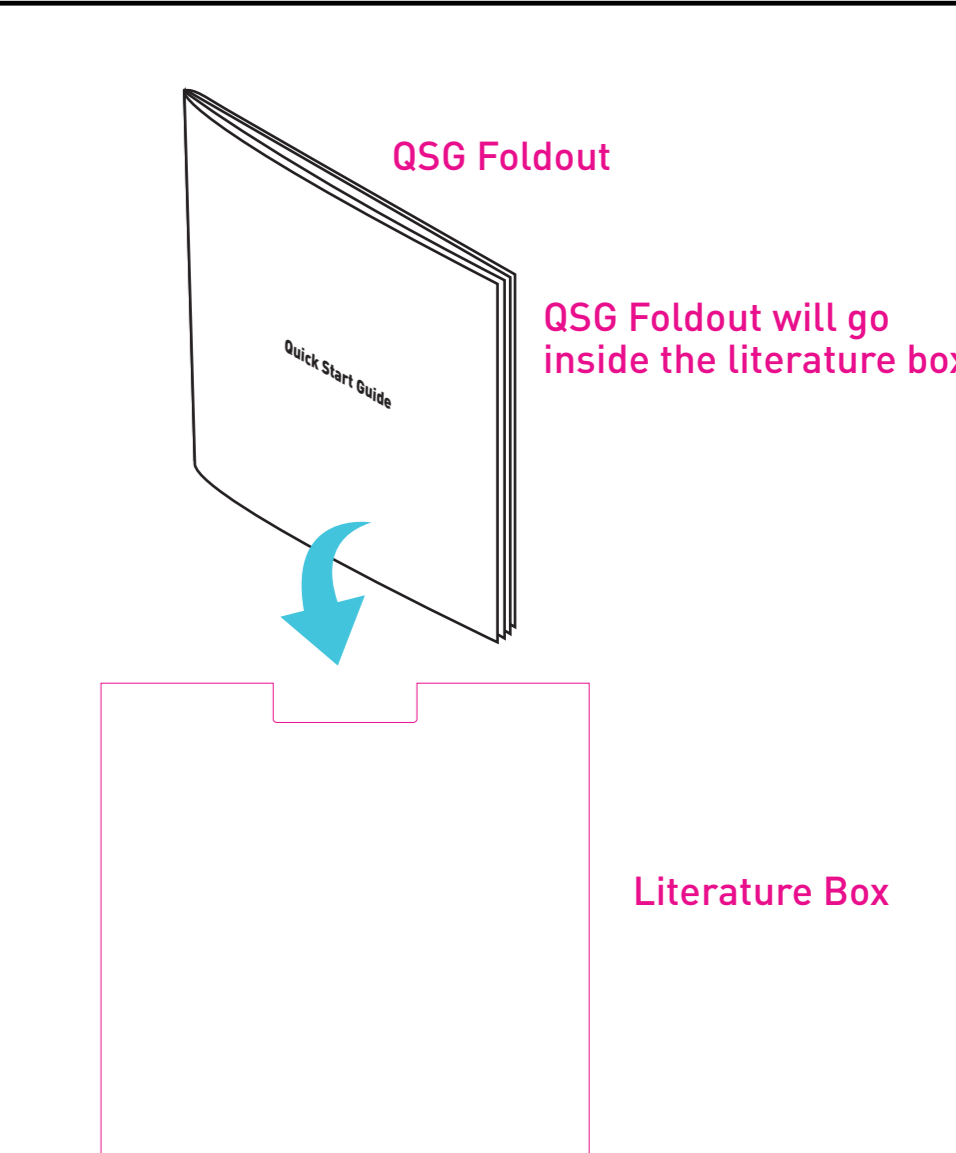
COMMENTS

Please do not print this layer!!!
• 100% actual size
• Refer to video on how to fold

SPECIFICATIONS

Printing information
BLK + WHT
QSG Paper Weight (80g) Foldout
Folding Line

QSG REFERENCE



Compliance Conformité

Regulatory Compliance Statements for the EAR FORCE Stealth 520 RX & TX
Federal Communications Commission (FCC) Compliance Metrics
This device complies with FCC Part 15B requirements for Class B digital devices, pursuant to Part 15 of the FCC Rules. These devices include but are not limited to: 1. This device must not cause harmful interference. 2. This device must accept any interference received, including interference that may cause undesired operation.

Class B Interference Statement
This equipment has been tested and found to comply with the limits for a Class B digital device, pursuant to Part 15 of the FCC Rules. These limits are designed to provide reasonable protection against harmful interference in a residential installation. This equipment generates, uses, and can radiate radio frequency energy and, if not installed and used in accordance with the instructions, may cause harmful interference to radio communications. However, there is no guarantee that interference will not occur in a particular installation. If this equipment does cause harmful interference to radio or television reception, which can be determined by turning the equipment off and on, the user is encouraged to try to correct the interference by one or more of the following measures:
• Reorient or relocate the receiving antenna.
• Increase the separation between the equipment and receiver.
• Connect the equipment into an outlet on a circuit different from that to which the receiver is connected.
• Consult the dealer or an experienced radio/TV technician for help.

FCC Caution:
This device complies with Part 15 of the FCC Rules. Operation is subject to the following two conditions: (1) This device may not cause harmful interference, and (2) this device must accept any interference received, including interference that may cause undesired operation.

RF Radiation Exposure & Hazard Statement
To ensure compliance with FCC RF exposure requirements, this device must be installed in a location such that the antenna of the device will be greater than 2 cm (0.8 in.) from all persons. Using higher gain antennas and types of antennas not covered under the FCC certification of this product is not allowed. Installation of the radio and end users of the product must adhere to the installation instructions provided in this manual. This transmitter must not be co-located or operated in conjunction with any other antenna or transmitter.

Non-Modification Statement
Use only the supplied internal antenna. Unauthorized antennas, modifications, or attachments could damage the EAR FORCE Stealth 520 RX & TX Models and void the FCC regulations. Any changes or modifications not expressly approved by the party responsible for compliance could void the user's authority to operate this equipment. Please contact Turtle Beach for a list of approved 2.4 GHz antennas.

Canadian ICES Statements IC: 3879A-TB2470 (Headset) 3879A-TB2471 (Transmitter)
This device complies with ICES-003 and RSS-247 of Industry Canada. Operation is subject to the following two conditions:
1. This device may not cause interference, and
2. This device must accept any interference, including interference that may cause undesired operation of the device.

CE Declaration of Conformity aux normes EN60950-1 et EN62368-1
L'utilisateur de ce dispositif est autorisé seulement sur les conditions suivantes:
1. Il ne doit pas produire de brouillage et l'utilisateur du dispositif doit être prêt à accepter le brouillage radioélectrique reçu, même si le brouillage est susceptible de compromettre le fonctionnement du dispositif.
2. Il ne peut pas prétendre à l'immunité contre le brouillage radioélectrique reçu, même si le brouillage est susceptible de compromettre le fonctionnement du dispositif.

RF Radiation Exposure & Hazard Statement
To ensure compliance with FCC RF exposure requirements, this device must be installed in a location such that the antenna of the device will be greater than 2 cm (0.8 in.) away from all persons. Using higher gain antennas and types of antennas not covered under the FCC certification of this product is not allowed. Installers of the radio and end users of the product must adhere to the installation instructions provided in this manual. This transmitter must not be co-located or operated in conjunction with any other antenna or transmitter.

Expозиция к радиации RF и Меры предосторожности
Для обеспечения соответствия с требованиями FCC (15C) к уровню излучения RF (Радио Фreqвенции), этот аппарат должен быть установлен в месте, которое будет находиться на расстоянии более 2 см (0,8 дюйма) от любых людей. Использование антенн с более высокой направленностью и типов антенн, не одобренных FCC, для сертификации этого продукта не разрешено. Установка радиоприемника и конечных пользователей продукта должны соблюдать инструкции по установке, предоставленные в этом руководстве. Этот передатчик не должен размещаться в непосредственной близости от любой другой антенны или передатчика.

European Union and European Fair Trade Association Regulatory Compliance
This equipment may be operated in the countries that comprise the member countries of the European Union and the European Fair Trade Association.
Marking by this symbol:
indicates compliance with the Essential Requirements of the R&TE Directive of the European Union (1999/5/EC). This equipment meets the following conference standards:
Safety: EN 60950-1:2006 + A11:2009 + A1:2010 + A12:2011 + A2:2011 (ET-Mark Licensal, EC 60950-1:2005 (2nd Edition) + A1:2009 + A1:2010 (2nd Edition) Scheme Recognition/Certification, EN 60236-1:2000, EN 60236-2:2000, EN 71-2:2011
EMC: EN 55022:2010 + AC:2011, EN 55014-1:2011 + A1:2011 + A2:2011 + A3:2011 + A4:2011 + A5:2011 + A6:2011 + A7:2011 + A8:2011 + A9:2011 + A10:2011 + A11:2011 + A12:2011 + A13:2011 + A14:2011 + A15:2011 + A16:2011 + A17:2011 + A18:2011 + A19:2011 + A20:2011 + A21:2011 + A22:2011 + A23:2011 + A24:2011 + A25:2011 + A26:2011 + A27:2011 + A28:2011 + A29:2011 + A30:2011 + A31:2011 + A32:2011 + A33:2011 + A34:2011 + A35:2011 + A36:2011 + A37:2011 + A38:2011 + A39:2011 + A40:2011 + A41:2011 + A42:2011 + A43:2011 + A44:2011 + A45:2011 + A46:2011 + A47:2011 + A48:2011 + A49:2011 + A50:2011 + A51:2011 + A52:2011 + A53:2011 + A54:2011 + A55:2011 + A56:2011 + A57:2011 + A58:2011 + A59:2011 + A60:2011 + A61:2011 + A62:2011 + A63:2011 + A64:2011 + A65:2011 + A66:2011 + A67:2011 + A68:2011 + A69:2011 + A70:2011 + A71:2011 + A72:2011 + A73:2011 + A74:2011 + A75:2011 + A76:2011 + A77:2011 + A78:2011 + A79:2011 + A80:2011 + A81:2011 + A82:2011 + A83:2011 + A84:2011 + A85:2011 + A86:2011 + A87:2011 + A88:2011 + A89:2011 + A90:2011 + A91:2011 + A92:2011 + A93:2011 + A94:2011 + A95:2011 + A96:2011 + A97:2011 + A98:2011 + A99:2011 + A100:2011 + A101:2011 + A102:2011 + A103:2011 + A104:2011 + A105:2011 + A106:2011 + A107:2011 + A108:2011 + A109:2011 + A110:2011 + A111:2011 + A112:2011 + A113:2011 + A114:2011 + A115:2011 + A116:2011 + A117:2011 + A118:2011 + A119:2011 + A120:2011 + A121:2011 + A122:2011 + A123:2011 + A124:2011 + A125:2011 + A126:2011 + A127:2011 + A128:2011 + A129:2011 + A130:2011 + A131:2011 + A132:2011 + A133:2011 + A134:2011 + A135:2011 + A136:2011 + A137:2011 + A138:2011 + A139:2011 + A140:2011 + A141:2011 + A142:2011 + A143:2011 + A144:2011 + A145:2011 + A146:2011 + A147:2011 + A148:2011 + A149:2011 + A150:2011 + A151:2011 + A152:2011 + A153:2011 + A154:2011 + A155:2011 + A156:2011 + A157:2011 + A158:2011 + A159:2011 + A160:2011 + A161:2011 + A162:2011 + A163:2011 + A164:2011 + A165:2011 + A166:2011 + A167:2011 + A168:2011 + A169:2011 + A170:2011 + A171:2011 + A172:2011 + A173:2011 + A174:2011 + A175:2011 + A176:2011 + A177:2011 + A178:2011 + A179:2011 + A180:2011 + A181:2011 + A182:2011 + A183:2011 + A184:2011 + A185:2011 + A186:2011 + A187:2011 + A188:2011 + A189:2011 + A190:2011 + A191:2011 + A192:2011 + A193:2011 + A194:2011 + A195:2011 + A196:2011 + A197:2011 + A198:2011 + A199:2011 + A200:2011 + A201:2011 + A202:2011 + A203:2011 + A204:2011 + A205:2011 + A206:2011 + A207:2011 + A208:2011 + A209:2011 + A210:2011 + A211:2011 + A212:2011 + A213:2011 + A214:2011 + A215:2011 + A216:2011 + A217:2011 + A218:2011 + A219:2011 + A220:2011 + A221:2011 + A222:2011 + A223:2011 + A224:2011 + A225:2011 + A226:2011 + A227:2011 + A228:2011 + A229:2011 + A230:2011 + A231:2011 + A232:2011 + A233:2011 + A234:2011 + A235:2011 + A236:2011 + A237:2011 + A238:2011 + A239:2011 + A240:2011 + A241:2011 + A242:2011 + A243:2011 + A244:2011 + A245:2011 + A246:2011 + A247:2011 + A248:2011 + A249:2011 + A250:2011 + A251:2011 + A252:2011 + A253:2011 + A254:2011 + A255:2011 + A256:2011 + A257:2011 + A258:2011 + A259:2011 + A260:2011 + A261:2011 + A262:2011 + A263:2011 + A264:2011 + A265:2011 + A266:2011 + A267:2011 + A268:2011 + A269:2011 + A270:2011 + A271:2011 + A272:2011 + A273:2011 + A274:2011 + A275:2011 + A276:2011 + A277:2011 + A278:2011 + A279:2011 + A280:2011 + A281:2011 + A282:2011 + A283:2011 + A284:2011 + A285:2011 + A286:2011 + A287:2011 + A288:2011 + A289:2011 + A290:2011 + A291:2011 + A292:2011 + A293:2011 + A294:2011 + A295:2011 + A296:2011 + A297:2011 + A298:2011 + A299:2011 + A300:2011 + A301:2011 + A302:2011 + A303:2011 + A304:2011 + A305:2011 + A306:2011 + A307:2011 + A308:2011 + A309:2011 + A310:2011 + A311:2011 + A312:2011 + A313:2011 + A314:2011 + A315:2011 + A316:2011 + A317:2011 + A318:2011 + A319:2011 + A320:2011 + A321:2011 + A322:2011 + A323:2011 + A324:2011 + A325:2011 + A326:2011 + A327:2011 + A328:2011 + A329:2011 + A330:2011 + A331:2011 + A332:2011 + A333:2011 + A334:2011 + A335:2011 + A336:2011 + A337:2011 + A338:2011 + A339:2011 + A340:2011 + A341:2011 + A342:2011 + A343:2011 + A344:2011 + A345:2011 + A346:2011 + A347:2011 + A348:2011 + A349:2011 + A350:2011 + A351:2011 + A352:2011 + A353:2011 + A354:2011 + A355:2011 + A356:2011 + A357:2011 + A358:2011 + A359:2011 + A360:2011 + A361:2011 + A362:2011 + A363:2011 + A364:2011 + A365:2011 + A366:2011 + A367:2011 + A368:2011 + A369:2011 + A370:2011 + A371:2011 + A372:2011 + A373:2011 + A374:2011 + A375:2011 + A376:2011 + A377:2011 + A378:2011 + A379:2011 + A380:2011 + A381:2011 + A382:2011 + A383:2011 + A384:2011 + A385:2011 + A386:2011 + A387:2011 + A388:2011 + A389:2011 + A390:2011 + A391:2011 + A392:2011 + A393:2011 + A394:2011 + A395:2011 + A396:2011 + A397:2011 + A398:2011 + A399:2011 + A400:2011 + A401:2011 + A402:2011 + A403:2011 + A404:2011 + A405:2011 + A406:2011 + A407:2011 + A408:2011 + A409:2011 + A410:2011 + A411:2011 + A412:2011 + A413:2011 + A414:2011 + A415:2011 + A416:2011 + A417:2011 + A418:2011 + A419:2011 + A420:2011 + A421:2011 + A422:2011 + A423:2011 + A424:2011 + A425:2011 + A426:2011 + A427:2011 + A428:2011 + A429:2011 + A430:2011 + A431:2011 + A432:2011 + A433:2011 + A434:2011 + A435:2011 + A436:2011 + A437:2011 + A438:2011 + A439:2011 + A440:2011 + A441:2011 + A442:2011 + A443:2011 + A444:2011 + A445:2011 + A446:2011 + A447:2011 + A448:2011 + A449:2011 + A450:2011 + A451:2011 + A452:2011 + A453:2011 + A454:2011 + A455:2011 + A456:2011 + A457:2011 + A458:2011 + A459:2011 + A460:2011 + A461:2011 + A462:2011 + A463:2011 + A464:2011 + A465:2011 + A466:2011 + A467:2011 + A468:2011 + A469:2011 + A470:2011 + A471:2011 + A472:2011 + A473:2011 + A474:2011 + A475:2011 + A476:2011 + A477:2011 + A478:2011 + A479:2011 + A480:2011 + A481:2011 + A482:2011 + A483:2011 + A484:2011 + A485:2011 + A486:2011 + A487:2011 + A488:2011 + A489:2011 + A490:2011 + A491:2011 + A492:2011 + A493:2011 + A494:2011 + A495:2011 + A496:2011 + A497:2011 + A498:2011 + A499:2011 + A500:2011 + A501:2011 + A502:2011 + A503:2011 + A504:2011 + A505:2011 + A506:2011 + A507:2011 + A508:2011 + A509:2011 + A510:2011 + A511:2011 + A512:2011 + A513:2011 + A514:2011 + A515:2011 + A516:2011 + A517:2011 + A518:2011 + A519:2011 + A520:2011 + A521:2011 + A522:2011 + A523:2011 + A524:2011 + A525:2011 + A526:2011 + A527:2011 + A528:2011 + A529:2011 + A530:2011 + A531:2011 + A532:2011 + A533:2011 + A534:2011 + A535:2011 + A536:2011 + A537:2011 + A538:2011 + A539:2011 + A540:2011 + A541:2011 + A542:2011 + A543:2011 + A544:2011 + A545:2011 + A546:2011 + A547:2011 + A548:2011 + A549:2011 + A550:2011 + A551:2011 + A552:2011 + A553:2011 + A554:2011 + A555:2011 + A556:2011 + A557:2011 + A558:2011 + A559:2011 + A560:2011 + A561:2011 + A562:2011 + A563:2011 + A564:2011 + A565:2011 + A566:2011 + A567:2011 + A568:2011 + A569:2011 + A570:2011 + A571:2011 + A572:2011 + A573:2011 + A574:2011 + A575:2011 + A576:2011 + A577:2011 + A578:2011 + A579:2011 + A580:2011 + A581:2011 + A582:2011 + A583:2011 + A584:2011 + A585:2011 + A586:2011 + A587:2011 + A588:2011 + A589:2011 + A590:2011 + A591:2011 + A592:2011 + A593:2011 + A594:2011 + A595:2011 + A596:2011 + A597:2011 + A598:2011 + A599:2011 + A600:2011 + A601:2011 + A602:2011 + A603:2011 + A604:2011 + A605:2011 + A606:2011 + A607:2011 + A608:2011 + A609:2011 + A610:2011 + A611:2011 + A612:2011 + A613:2011 + A614:2011 + A615:2011 + A616:2011 + A617:2011 + A618:2011 + A619:2011 + A620:2011 + A621:2011 + A622:2011 + A623:2011 + A624:2011 + A625:2011 + A626:2011 + A627:2011 + A628:2011 + A629:2011 + A630:2011 + A631:2011 + A632:2011 + A633:2011 + A634:2011 + A635:2011 + A636:2011 + A637:2011 + A638:2011 + A639:2011 + A640:2011 + A641:2011 + A642:2011 + A643:2011 + A644:2011 + A645:2011 + A646:2011 + A647:2011 + A648:2011 + A649:2011 + A650:2011 + A651:2011 + A652:2011 + A653:2011 + A654:2011 + A655:2011 + A656:2011 + A657:2011 + A658:2011 + A659:2011 + A660:2011 + A661:2011 + A662:2011 + A663:2011 + A664:2011 + A665:2011 + A666:2011 + A667:2011 + A668:2011 + A669:2011 + A670:2011 + A671:2011 + A672:2011 + A673:2011 + A674:2011 + A675:2011 + A676:2011 + A677:2011 + A678:2011 + A679:2011 + A680:2011 + A681:2011 + A682:2011 + A683:2011 + A684:2011 + A685:2011 + A686:2011 + A687:2011 + A688:2011 + A689:2011 + A690:2011 + A691:2011 + A692:2011 + A693:2011 + A694:2011 + A695:2011 + A696:2011 + A697:2011 + A698:2011 + A699:2011 + A700:2011 + A701:2011 + A702:2011 + A703:2011 + A704:2011 + A705:2011 + A706:2011 + A707:2011 + A708:2011 + A709:2011 + A710:2011 + A711:2011 + A712:2011 + A713:2011 + A714:2011 + A715:2011 + A716:2011 + A717:2011 + A718:2011 + A719:2011 + A720:2011 + A721:2011 + A722:2011 + A723:2011 + A724:2011 + A725:2011 + A726:2011 + A727:2011 + A728:2011 + A729:2011 + A730:2011 + A731:2011 + A732:2011 + A733:2011 + A734:2011 + A735:2011 + A736:2011 + A737:2011 + A738:2011 + A739:2011 + A740:2011 + A741:2011 + A742:2011 + A743:2011 + A744:2011 + A745:2011 + A746:2011 + A74