

1.1 Product Under Test Photo



Figure 1: Internal Photo of Stealth 600X Gen 2 MAX RX - Remove Speakers

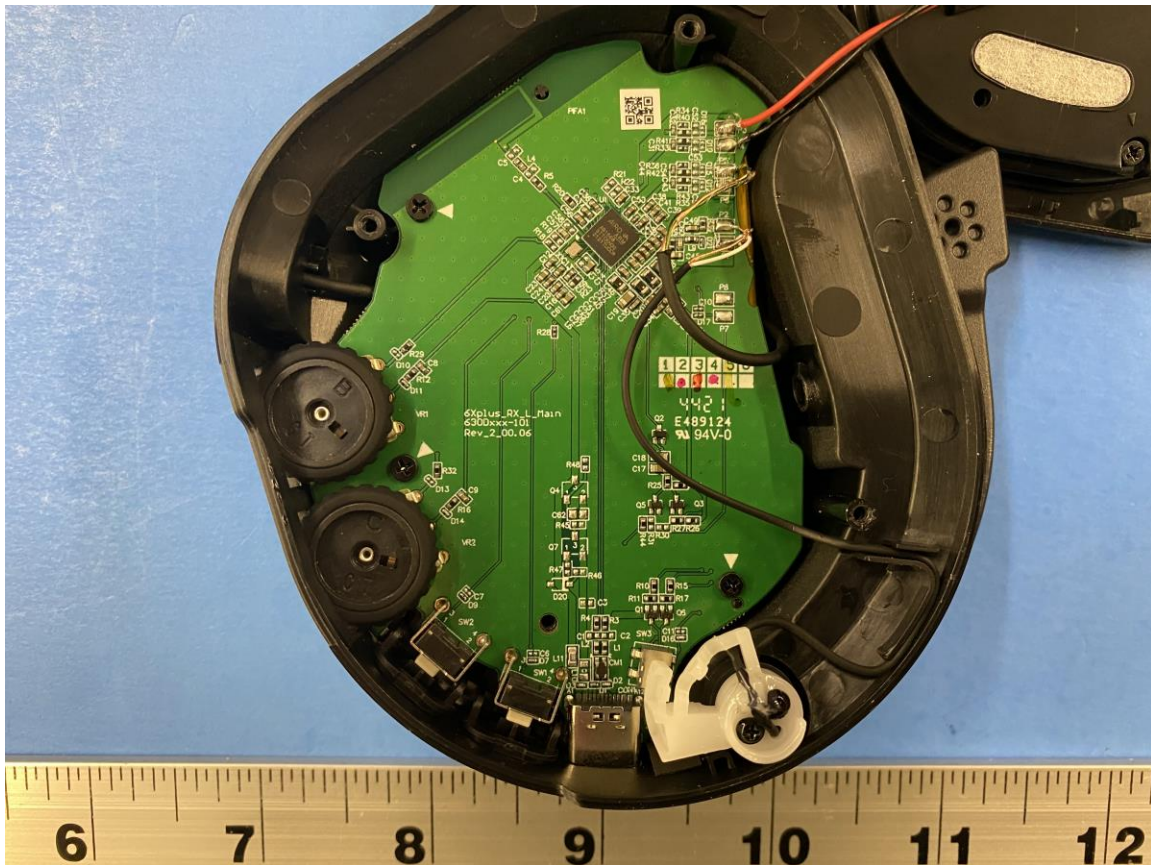


Figure 2: Internal Photo of Stealth 600X Gen 2 MAX RX Main PCB (Top)

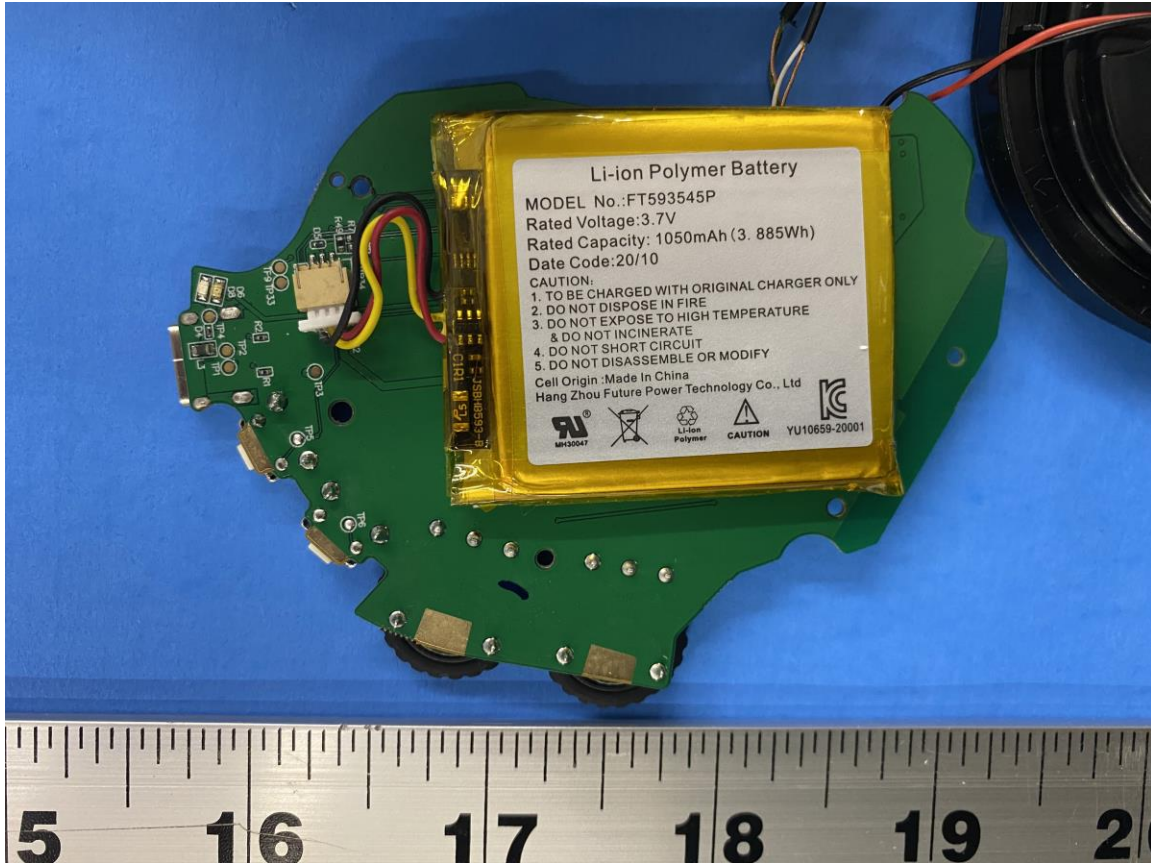


Figure 3: Internal Photo of Stealth 600X Gen 2 MAX RX Main PCB with Battery (Bottom)

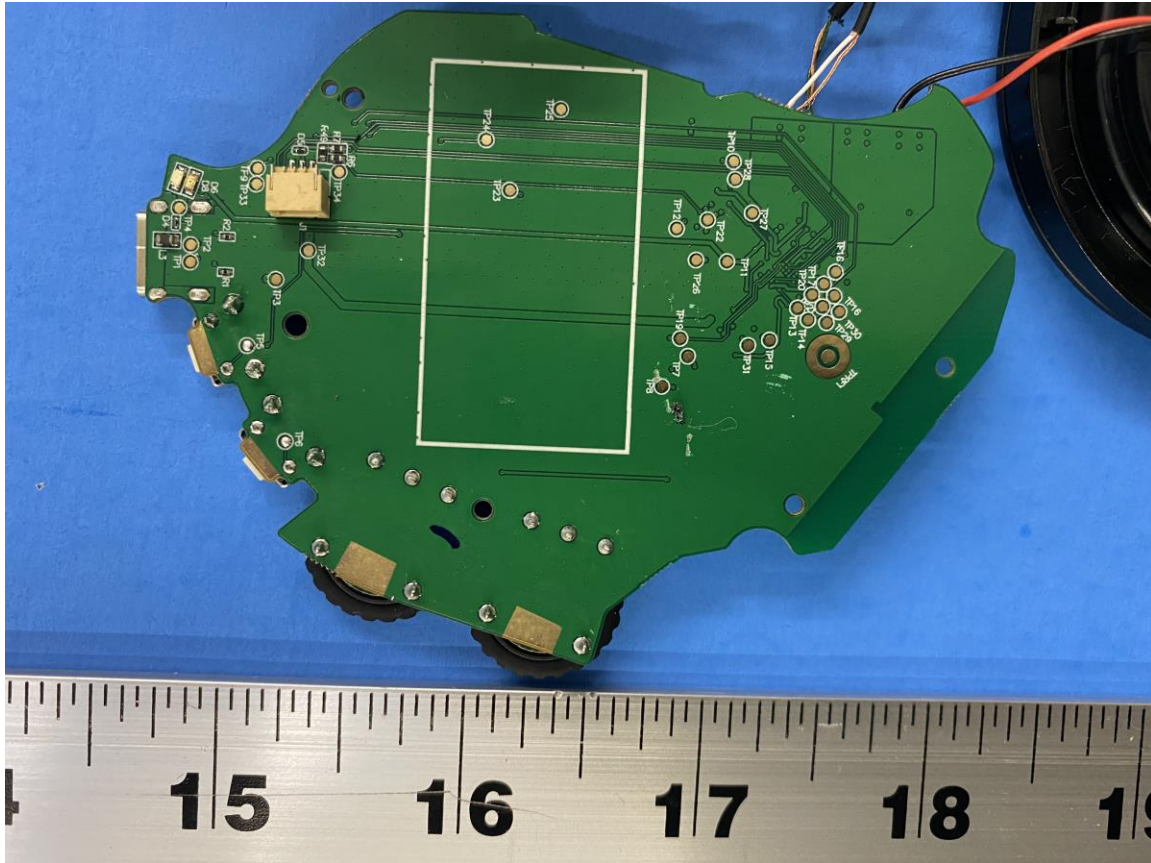


Figure 4: Internal Photo of Stealth 600X Gen 2 MAX RX Main PCB without Battery (Bottom)



Figure 5: Internal Photo of Stealth 600X Gen 2 MAX RX (1050 mAh Battery, Top)

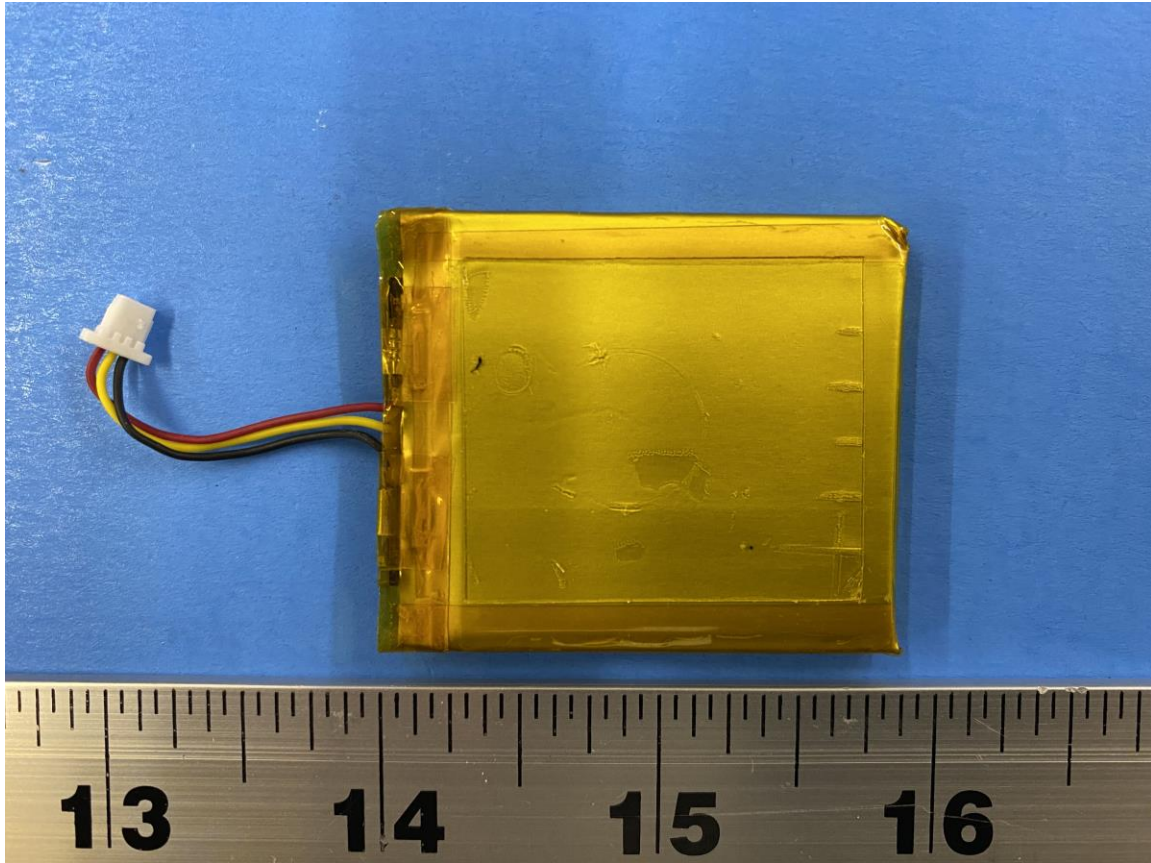


Figure 6: Internal Photo of Stealth 600X Gen 2 MAX RX (1050 mAh Battery, Bottom)