



Photograph 1. Back View



Photograph 2. Bottom View



Photograph 3. Front View



Photograph 4. Left View



Photograph 5. Right View



Photograph 6. Top View



ACCOLADE

YES CLR NO
1 2 3
4 5 6
7 8 9
* 0 #

Intrinsically Safe



PN17007
3.65V/4.8AH,
5 A MAX.
LITHIUM ION RECHARGEABLE
BATTERY

CHARGING INSTRUCTIONS: CHARGE TO
4.1V AT 1.5A MAXX WITH
TAPERING CURRENT TO 0.5MA ON FOR
5 HRS CUTOFF. CHARGE ONLY IN
TEMPERATURE RANGE OF 0 TO 130 F
TO 60° C (140° F)

SIN00312

BATTERY PACK MUST ONLY BE
CHARGED IN A FRESH AIR
LOCATION.

THE BATTERY SHALL NOT BE REPLACED BY THE
USER, IT IS NOT A USER SERVICEABLE PART.

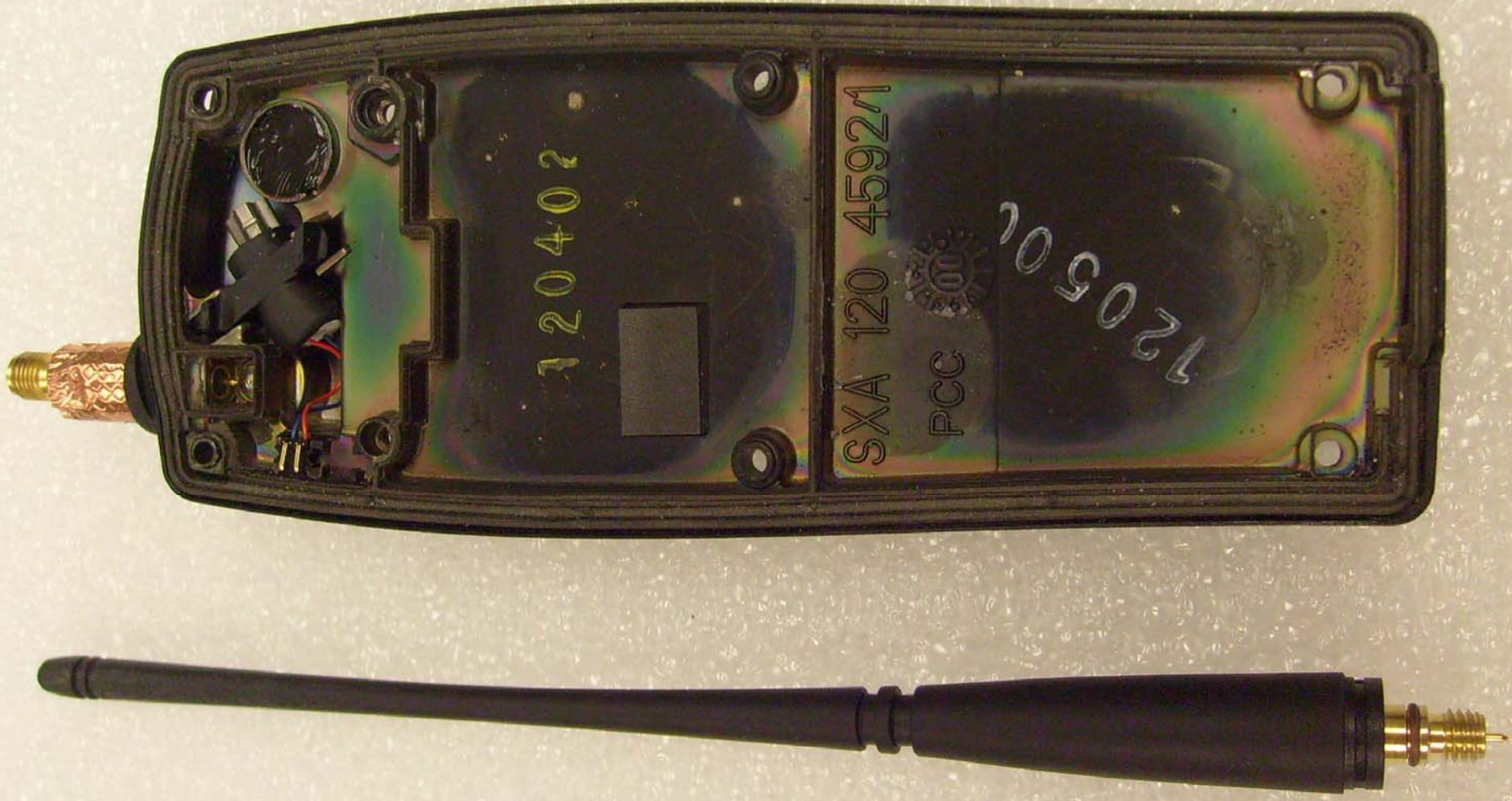
L-3 Communications
Permissible ASM100001
Accolada Miner Mesh Radio Handset

MSHA
Approved Safety Equipment for Use in
Methane-Air Mixtures Only

APPROVAL NO. 23-A080020-0

**TESTED FOR INTRINSIC SAFETY IN
METHANE-AIR MIXTURES ONLY**

WARNINGS:
1. The MMR handset is not MSHA approved for use with an external speaker and microphone.
2. Use of this product is subject to the conditions specified in MAM100001.



120402

SX A 120 4592M

PCC

120502