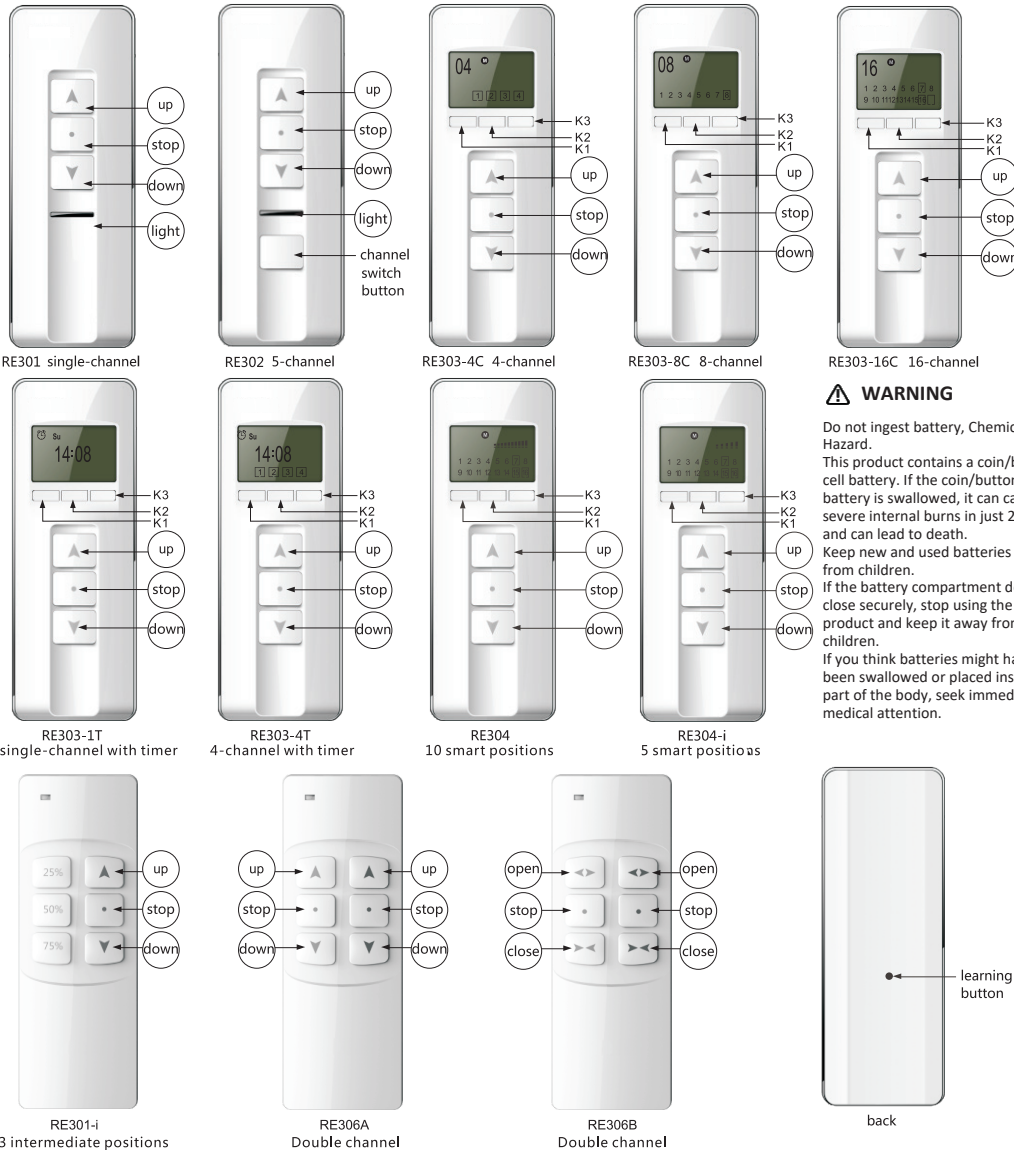


1.Product appearance



WARNING
 Do not ingest battery, Chemical Burn Hazard.
 This product contains a coin/button cell battery. If the coin/button cell battery is swallowed, it can cause severe internal burns in just 2 hours and can lead to death. Keep new and used batteries away from children. If the battery compartment does not close securely, stop using the product and keep it away from children. If you think batteries might have been swallowed or placed inside any part of the body, seek immediate medical attention.

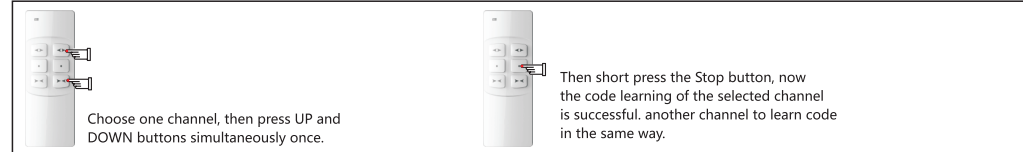
2.Technical data

Power : 3V \square Direct Current model:CR2032	Currency : $\leq 12\text{mA}$
Work temperature : $-20^{\circ}\text{C} \sim 60^{\circ}\text{C}$ (non LCD emitter)	Code: rolling code
Work temperature : $-10^{\circ}\text{C} \sim 60^{\circ}\text{C}$ (LCD emitter)	Frequency : 433.92MHz

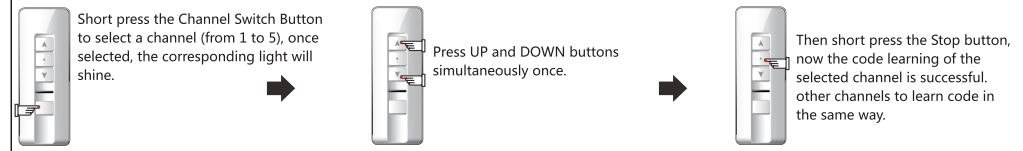
3.Code learning

01.Single channel
 Press UP and Down buttons simultaneously once, then short press Stop button once.

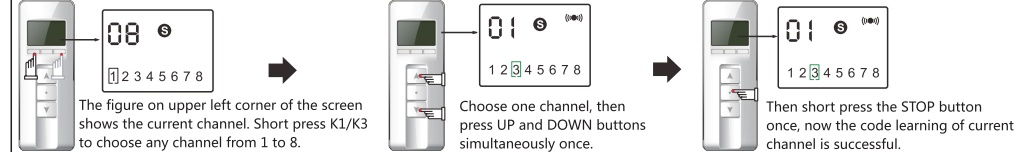
02.Double-channel emitter



03.5-channel emitter



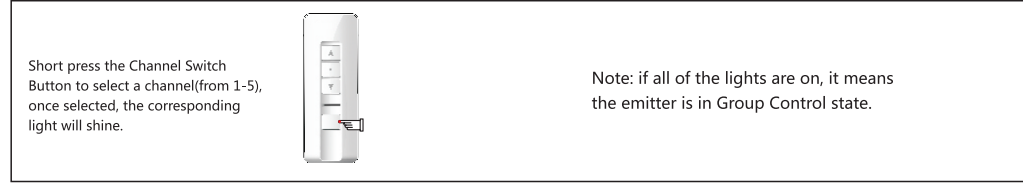
04.LCD Multi-channel(take 8-channel emitter as an example)



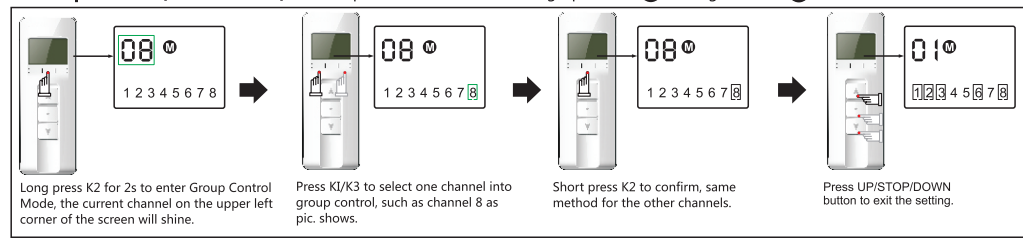
4.Single control

Press K1/K3 button to select a channel, then the corresponding motor can be controlled by the emitter through short pressing UP/STOP/DOWN button.

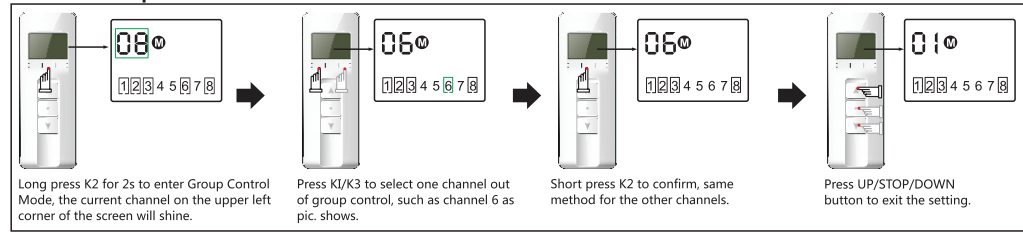
5.Group control(5-channel emitter)



6.Group control(LCD emitter) Short press K2 button to choose group control (M) or single control (S).



7.Delete Group Control



Note: whether in (M) or (S) mode, the current channel is always selected.

8.LCD emitter timer(4-channel)

01.Time setting

Press K1 button to enter hour setting page. now the hour figure will shine. press UP/ STOP/DOWN button to adjust the hour figure.

Press K1 again to adjust minute, the minute figure will shine.Press UP/STOP/ DOWN button to adjust the figure.

Press K1 again to adjust weekday, the weekday figure will shine. Press UP/ STOP/DOWN button to adjust the figure.

After setting, press STOP button to exit and go back to initial page.

02.Timing setting

In the initial page, press K2 to enter timing_setting page, there is a timing clock on the upper left corner. You can respectively set 8 opening time point and 8 closing time points, in total 16 point. 1~8 press K2 to cycle among 16 time points. Press K3 to choose the output channels which you want(single channel or 4 channels).

Press K2 to enter timing setting page.

Press K2 again to select one point among 16 timing points.

Press K3 to choose the channel you want(single channel or 4 channels).

Press K1 to set time(in the same way of Time setting above)

Once one time point is set, press K2 again to select other points to set time.

Press STOP button to exit the setting.

03.Close time function

Press K2 to enter timing setting page.

Press K2 again to select one point need to be closed.

Press K3 until above display appears, which means the point has closed; press K3 again to retrieve this point.

After setting, press STOP button to exit and go back to the initial page.

9.LCD emitter timer(single-channel)

01Time setting

Press K1 button to enter hour setting page. now the hour figure will shine. press UP/ STOP/DOWN button to adjust the hour figure.

Press K1 again to adjust minute, the minute figure will shine. Press UP/STOP/DOWN button to adjust the figure.

Press K1 again to adjust weekday, the weekday figure will shine. Press UP/STOP/DOWN button to adjust the figure.

After setting, press STOP button to exit and go back to initial page.

02.Timing setting

In the initial page, press K2 to enter timing_setting page, there is a timing clock on the upper left corner. You can respectively set 8 opening time point and 8 closing time points, in total 16 point. 1~8 press K2 to cycle among 16 time points.

Press K2 to enter timing setting page.

Press K2 again to select one point among 16 timing points.

Press K3 to enter time setting page, press K1 to set time(in the same way of Time setting above)

Once one time point is set, press K2 again to select other time points to set time.

03.Close timing function

Press K2 to enter timing setting page.

Press K2 again to select one point need to be closed.

Press K3 once to delete the point, press K3 again to retrieve this point

Press STOP button to exit the setting.

04.Stopwatch function

In the initial page, press K3 to enter Stopwatch page.

Press K3 again to go back to initial page.

Note:

- The emitter must enter into timing setting page if you want to set timing points (there is a timing clock on the upper left), otherwise, the setting is invalid. If there is no timing clock on the upper left hold STOP button and press K2 within 10 seconds, then the timing clock will be there.
- You'd better not press emitter's buttons too long. Each pressing is about 0.5s, and the pressing interval is about 1s.
- The emitter will stop working if the battery is in low power. Please replace the battery in this case.

10.Smart position mode(only for RE304、RE304-i)

01. S single control mode

Note: Whether in S mode or M mode, only up-and-down limit is setted, smart position function is effective.

Short press K2 to single control smart position mode.

In this mode, short press K1/K3, the motor of selected channel will automatically run to the selected position.

Press K1/K3 again to adjust position, for example adjust to full bar.

02. M group control mode

Short press K2 until in group location mode.

In this mode, short press K1/K3, the motor of selected channel will automatically run to the selected position.

Press K1/K3 again to adjust position, for example adjust to full bar.

FCC Warning

This device complies with part 15 of the FCC Rules. Operation is subject to the following two conditions: (1) This device may not cause harmful interference, and (2) this device must accept any interference received, including interference that may cause undesired operation.

Any Changes or modifications not expressly approved by the party responsible for compliance could void the user's authority to operate the equipment.

Note: This equipment has been tested and found to comply with the limits for a Class B digital device, pursuant to part 15 of the FCC Rules. These limits are designed to provide reasonable protection against harmful interference in a residential installation. This equipment generates uses and can radiate radio frequency energy and, if not installed and used in accordance with the instructions, may cause harmful interference to radio communications. However, there is no guarantee that interference will not occur in a particular installation. If this equipment does cause harmful interference to radio or television reception, which can be determined by turning the equipment off and on, the user is encouraged to try to correct the interference by one or more of the following measures:

- Reorient or relocate the receiving antenna.
- Increase the separation between the equipment and receiver.
- Connect the equipment into an outlet on a circuit different from that to which the receiver is connected.
- Consult the dealer or an experienced radio/TV technician for help.