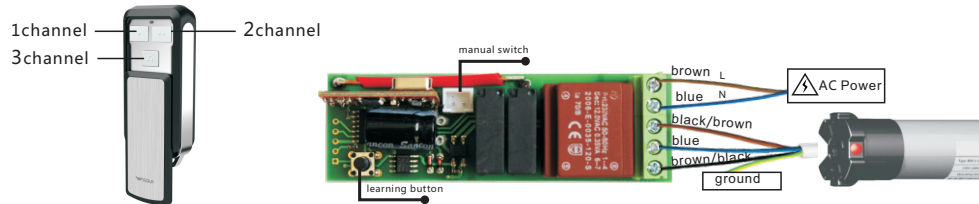


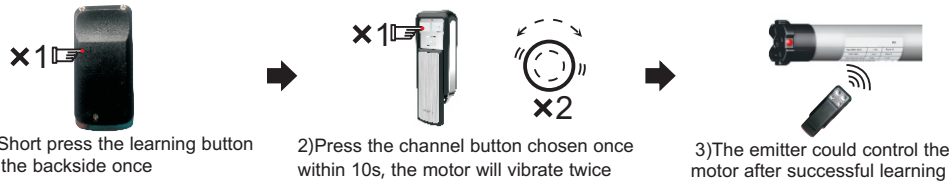
1 Technique Specifications

- > Power : 3V
 - > Emission current : <12mA
 - > Protection index : IP30
 - > code : rolling code
 - > Battery model : CR2032
 - > Standby current : <1uA
 - > Transmitting frequency : 433.92MHz
 - > The emitter is compatible with all the receivers in our company, the instruction will illustrate with RC006 for example.
- Battery:Rated Voltage: 3V Capacity: 210mAh

2 wiring

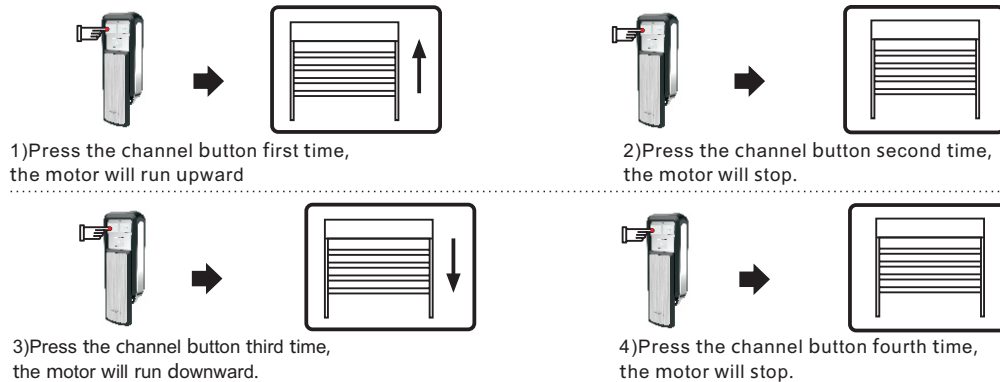


3 code learning



Remakes:after learning successfully, the step by

4 specific operation



Remarks: the operation will be in sequence, same as other channel

5 Code deleting



! Announcement

- > Setting may fail due to the interference of signal. If in this case, please reset.
- > Please do not press buttons for too long in case life span of battery declines. The button press should be about 0.5s with 1S interval .If the battery is in low power, please replace battery.
- > The control unit is of high voltage. Please do not place it in humid atmosphere.
- > Children should be supervised to ensure that they do not play with the appliance.
- > Ambient temperature:-10°C~+55°C.
- > All products are as per material subjects if there is change in appearance, color, function etc. The information is subject to changes without prior notice.

FCC Caution.

This device complies with part 15 of the FCC Rules. Operation is subject to the following two conditions: (1) This device may not cause harmful interference, and (2) this device must accept any interference received, including interference that may cause undesired operation.

Any Changes or modifications not expressly approved by the party responsible for compliance could void the user's authority to operate the equipment.

Note: This equipment has been tested and found to comply with the limits for a Class B digital device, pursuant to part 15 of the FCC Rules. These limits are designed to provide reasonable protection against harmful interference in a residential installation. This equipment generates uses and can radiate radio frequency energy and, if not installed and used in accordance with the instructions, may cause harmful interference to radio communications. However, there is no guarantee that interference will not occur in a particular installation. If this equipment does cause harmful interference to radio or television reception, which can be determined by turning the equipment off and on, the user is encouraged to try to correct the interference by one or more of the following measures:

- Reorient or relocate the receiving antenna.
- Increase the separation between the equipment and receiver.
- Connect the equipment into an outlet on a circuit different from that to which the receiver is connected.
- Consult the dealer or an experienced radio/TV technician for help.