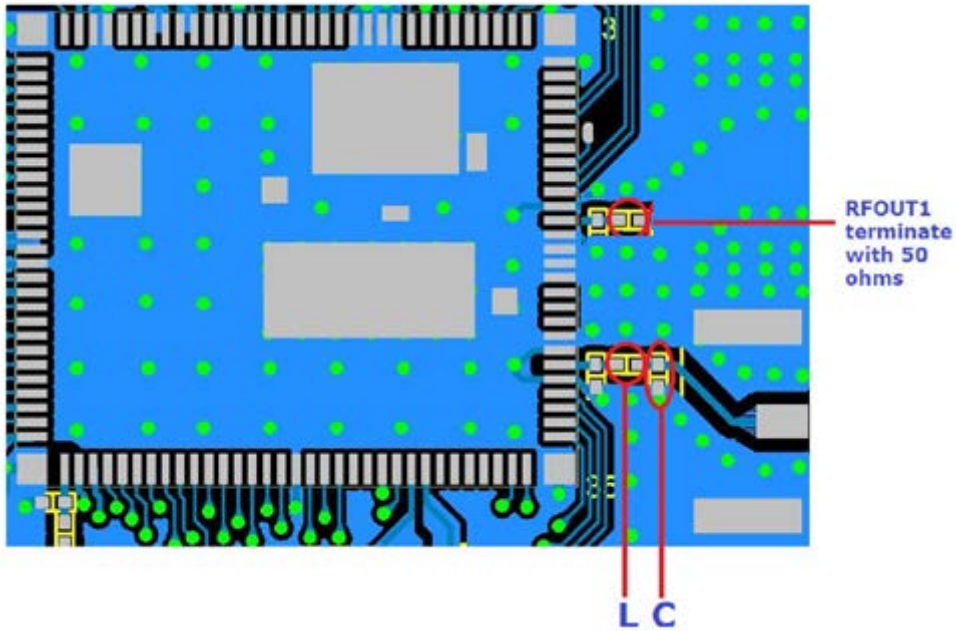


Trace layout and dimensions:

- 1) Trace Width :: 15.1 mil
- 2) Trace Length :: 403 mil
- 3) Trace to Copper gap :: 23.6 mil
- 4) Trace Impedance :: 50 ohm
- 5) Used an inductor and capacitor to match 50 ohm.
- 6) Below image shows the front end circuit



Manufacturer and specifications:

- 1) Resistor value :: 50ohms and Yageo manufacturer
Part Number:: RC0402JR-0751RL
- 2) Inductor value :: 0.6nH and Murata manufacturer
Part Number :: MLG1005S0N6CT000
- 3) Capacitor Value :: 0.5pF and Murata manufacturer
Part Number::GRM1555C1HR50BA01D
- 4) SMA Connector :: Edge Mount and Amphenol manufacturer
Part Number:: 132357-11

Test procedures for design verification

Final design will be verified at Redpine and make sure that they are as per recommendation.

Production test procedures for ensuring compliance

Customers will be advised to check the final design are as per the Redpine recommendation and if there is any deviation of the design then they have to go for re-certification of FCC compliance before launching their products.



Name: Chandra Sekhar Abburi

Title: VP-Systems

On behalf of Redpine Signals Inc

Phone: +91 40 39351008