



Test Report

Date : 2018-11-28
No. : HM18090017

Page 1 of 23

Applicant: Heng Yu Electronic Manufacturing Co., Ltd.
ROOM 1502-05, NAN FUNG COMMERCIAL CENTRE,
19 LAM LOK STREET, KOWLOON BAY, KOWLOON,
HONG KONG

Manufacturer: Zhuhai Heng Yu New Technology Co Ltd.
Heng Ke Campus, Jin Hai Avenue,
San Zao, Zhuhai, Guang Dong, P.R.C. 519040

Description of Sample(s): Product: Wireless mouse
Brand Name: Heng Yu
Model Number: HM805
FCC ID: XENHM805

Date Sample(s) Received: 2018-09-12

Date Tested: 2018-10-11 to 2018-10-14

Investigation Requested: Perform ElectroMagnetic Interference measurement in accordance with FCC 47CFR [Codes of Federal Regulations] Part 15: 2017 and ANSI C63.10:2013 for FCC Certification.

Conclusion(s): The submitted product COMPLIED with the requirements of Federal Communications Commission [FCC] Rules and Regulations Part 15. The tests were performed in accordance with the standards described above and on Section 2.2 in this Test Report.

Remark(s): ---


CHEUNG Chi, Kenneth
Authorized Signatory

A red circular seal with a serrated edge. Inside the seal is the 'SE' logo. The text around the inner border of the seal reads 'THE HONG KONG STANDARDS AND TESTING CENTRE LTD'.



Test Report

Date : 2018-11-28
No. : HM18090017

Page 2 of 23

CONTENT:

Cover	Page 1 of 23	
Content	Page 2 of 23	
<u>1.0</u>	<u>General Details</u>	
1.1	Equipment Under Test [EUT] Description of EUT operation	Page 3 of 23
1.2	Description of EUT Operation	
1.3	Date of Order	Page 3 of 23
1.4	Submitted Sample	Page 3 of 23
1.5	Test Duration	Page 3 of 23
1.6	Country of Origin	Page 3 of 23
<u>2.0</u>	<u>Technical Details</u>	
2.1	Investigations Requested	Page 4 of 23
2.2	Test Standards and Results Summary	Page 4 of 23
<u>3.0</u>	<u>Test Results</u>	
3.1	Emission	Page 5-18 of 23
<u>Appendix A</u>		
	List of Measurement Equipment	Page 19 of 23
<u>Appendix B</u>		
	Photograph(s) of EUT	Page 20-23 of 23



Test Report

Date : 2018-11-28
No. : HM18090017

Page 3 of 23

1.0 General Details

1.1 Equipment Under Test [EUT]

Description of Sample(s)

Product: Wireless mouse
Manufacturer: Zhuhai Heng Yu New Technology Co. Ltd.
Heng Ke Campus, Jin Hai Avenue, Sanzao, Zhuhai,
Guang Dong, P.R.C. 519040
Brand Name: Heng Yu
Model Number: HM805
Rating: 1.5V.d.c. (AA size battery x 1)

1.2 Description of EUT Operation

The Equipment Under Test (EUT) is a 2.4GHz Wireless Mouse. The EUT type of modulation is GFSK, the channel frequency range 2405-2474MHz.

1.3 Date of Order

2018-09-17

1.4 Submitted Sample(s):

1 Sample

1.5 Test Duration

2018-10-11 to 2018-10-14

1.6 Country of Origin

China



Test Report

Date : 2018-11-28
No. : HM18090017

Page 4 of 23

2.0 Technical Details

2.1 Investigations Requested

Perform Electromagnetic Interference measurements in accordance with FCC 47CFR [Codes of Federal Regulations] Part 15: 2017 Regulations and ANSI C63.10:2013 for FCC Certification.

2.2 Test Standards and Results Summary Tables

EMISSION Results Summary					
Test Condition	Test Requirement	Test Method	Class / Severity	Test Result	
				Pass	Fail
Field Strength of Fundamental & Harmonics Emissions	FCC 47CFR 15.249	ANSI C63.10:2013	N/A	<input checked="" type="checkbox"/>	<input type="checkbox"/>
AC power-line conducted emissions	FCC 47CFR 15.207	ANSI C63.10:2013	N/A	N/A	
Radiated Emissions	FCC 47CFR 15.209	ANSI C63.10:2013	N/A	<input checked="" type="checkbox"/>	<input type="checkbox"/>

Note: N/A - Not Applicable

The Hong Kong Standards and Testing Centre Limited

10 Dai Wang Street, Taiipo Industrial Estate, Tai Po, N.T., Hong Kong

Tel: +852 2666 1888 Fax: +852 2664 4353 Email: hkstc@stc.group Website: www.stc.group

This report shall not be reproduced unless with prior written approval from The Hong Kong Standards and Testing Centre Limited.

For Conditions of Issuance of this test report, please refer to "Conditions of Issuance of Test Reports" section or Website.



Test Report

Date : 2018-11-28
No. : HM18090017

Page 5 of 23

3.0 Test Results

3.1 Emission

3.1.1 Field Strength of Fundamental & Harmonics Emissions

Test Requirement:	FCC 47CFR 15.249
Test Method:	ANSI C63.10:2013
Test Date:	2018-10-11
Mode of Operation:	Tx Mode

Test Method:

For emission measurements at or below 1 GHz, the sample was placed 0.8m above the ground plane of semi-anechoic Chamber*. For emission measurements above 1 GHz, the sample was placed 1.5m above the ground plane of semi-anechoic Chamber*. Measurements in both horizontal and vertical polarities were performed. During the test, each emission was maximized by: having the EUT continuously working, investigated all operating modes, rotated about all 3 axis (X, Y & Z) and considered typical configuration to obtain worst position, manipulating interconnecting cables, rotating turntable, varying antenna height from 1m to 4m in both horizontal and vertical polarizations. In the frequency range of 9kHz to 30MHz, The center of the loop antenna shall be 1 meter above the ground and rotated loop axis for maximum reading. The emissions worst-case are shown in Test Results of the following pages.

Remark: 3 orthogonal axis apply to hand-held device only.

*: Semi-anechoic chamber located on the G/F of The Hong Kong Standards and Testing Centre Ltd.
FCC Test Firm Registration Number 723883
Designation Number HK0001

The Hong Kong Standards and Testing Centre Limited

10 Dai Wang Street, Taiipo Industrial Estate, Tai Po, N.T., Hong Kong

Tel: +852 2666 1888 Fax: +852 2664 4353 Email: hkstc@stc.group Website: www.stc.group

This report shall not be reproduced unless with prior written approval from The Hong Kong Standards and Testing Centre Limited.

For Conditions of Issuance of this test report, please refer to "Conditions of Issuance of Test Reports" section or Website.

Test Report

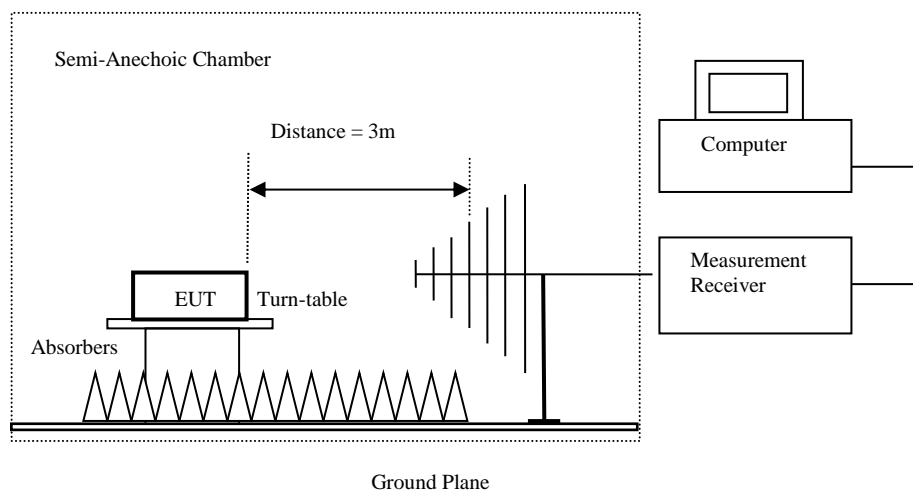
Date : 2018-11-28
No. : HM18090017

Page 6 of 23

Spectrum Analyzer Setting:

9KHz – 30MHz (Pk & Av)	RBW: 10kHz
	VBW: 30kHz
	Sweep: Auto
	Span: Fully capture the emissions being measured
	Trace: Max. hold
30MHz – 1GHz (QP)	RBW: 120kHz
	VBW: 120kHz
	Sweep: Auto
	Span: Fully capture the emissions being measured
	Trace: Max. hold
Above 1GHz (Pk & Av)	RBW: 3MHz
	VBW: 3MHz
	Sweep: Auto
	Span: Fully capture the emissions being measured
	Trace: Max. hold

Test Setup:



Absorbers placed on top of the ground plane are for measurements above 1000MHz only.



Test Report

Date : 2018-11-28
No. : HM18090017

Page 7 of 23

Limits for Field Strength of Fundamental & Harmonics Emissions [FCC 47CFR 15.249]:

Fundamental frequency [MHz]	Field strength of fundamental (millivolts/meter)	Field strength of harmonics (microvolts/meter)
902-928 MHz	50	500
2400-2483.5 MHz	50	500
5725-5875 MHz	50	500
24.0-24.25 GHz	250	2500

Result of TX mode (Lowest Channel), (Above 1GHz): Pass

Field Strength of Fundamental and Harmonics Emissions						
Peak Value						
Frequency MHz	Measured Level @3m dB μ V/m	Correction Factor dB μ V/m	Field Strength dB μ V/m	Field Strength μ V/m	Limit @3m μ V/m	E-Field Polarity
2405.0	59.3	27.9	87.2	22,908.7	500,000	Horizontal
* 4810.0	1.1	32.1	33.2	45.7	5,000	Horizontal
7215.0	0.4	38.6	39.0	89.1	5,000	Horizontal
9620.0	Emissions detected are more than 20 dB below the FCC Limits				5,000	Horizontal
* 12025.0					5,000	Horizontal
14430.0					5,000	Horizontal
16835.0					5,000	Horizontal
* 19240.0					5,000	Horizontal
21645.0					5,000	Horizontal
24050.0					5,000	Horizontal

Field Strength of Fundamental and Harmonics Emissions						
Average Value						
Frequency MHz	Measured Level @3m dB μ V/m	Correction Factor dB μ V/m	Field Strength dB μ V/m	Field Strength μ V/m	Limit @3m μ V/m	E-Field Polarity
2408.0	44.8	27.9	72.7	4,315.2	50,000	Horizontal
* 4816.0	0.4	32.1	32.5	42.2	500	Horizontal
7224.0	-1.3	38.6	37.3	73.3	500	Horizontal
9632.0	Emissions detected are more than 20 dB below the FCC Limits				500	Horizontal
* 12040.0					500	Horizontal
14448.0					500	Horizontal
16856.0					500	Horizontal
* 19264.0					500	Horizontal
21672.0					500	Horizontal
24080.0					500	Horizontal

Remarks: The fundamental frequency was not included in the pre-scan plot, a 2.4G notch filter was added prior to the Receiver, please refer the band-edge plot for the level of fundamental frequency.

The Hong Kong Standards and Testing Centre Limited

10 Dai Wang Street, Taipo Industrial Estate, Tai Po, N.T., Hong Kong

Tel: +852 2666 1888 Fax: +852 2664 4353 Email: hkstc@stc.group Website: www.stc.group

This report shall not be reproduced unless with prior written approval from The Hong Kong Standards and Testing Centre Limited.

For Conditions of Issuance of this test report, please refer to "Conditions of Issuance of Test Reports" section or Website.



Test Report

Date : 2018-11-28
 No. : HM18090017

Page 8 of 23

Result of TX mode (Middle Channel), (Above 1GHz): Pass

Field Strength of Fundamental and Harmonics Emissions						
Peak Value						
Frequency MHz	Measured Level @3m dB μ V/m	Correction Factor dB μ V/m	Field Strength dB μ V/m	Field Strength μ V/m	Limit @3m μ V/m	E-Field Polarity
2437.0	58.4	27.9	86.3	20,653.8	500,000	Horizontal
* 4874.0	1.4	32.1	33.5	47.3	5,000	Horizontal
* 7311.0	0.5	38.6	39.1	90.2	5,000	Horizontal
9748.0	Emissions detected are more than 20 dB below the FCC Limits				5,000	Horizontal
* 12185.0					5,000	Horizontal
14622.0					5,000	Horizontal
17059.0					5,000	Horizontal
* 19496.0					5,000	Horizontal
21933.0					5,000	Horizontal
24370.0					5,000	Horizontal

Field Strength of Fundamental and Harmonics Emissions						
Average Value						
Frequency MHz	Measured Level @3m dB μ V/m	Correction Factor dB μ V/m	Field Strength dB μ V/m	Field Strength μ V/m	Limit @3m μ V/m	E-Field Polarity
2435.0	46.1	27.9	74.0	5,011.9	50,000	Horizontal
* 4870.0	0.8	32.1	32.9	44.2	500	Horizontal
* 7305.0	-1.1	38.6	37.5	75.0	500	Horizontal
9740.0	Emissions detected are more than 20 dB below the FCC Limits				500	Horizontal
* 12175.0					500	Horizontal
14610.0					500	Horizontal
17045.0					500	Horizontal
* 19480.0					500	Horizontal
21915.0					500	Horizontal
24350.0					500	Horizontal

Remarks: The fundamental frequency was not included in the pre-scan plot, a 2.4G notch filter was added prior to the Receiver, please refer the band-edge plot for the level of fundamental frequency.



Test Report

Date : 2018-11-28
No. : HM18090017

Page 9 of 23

Result of TX mode (Highest Channel), (Above 1GHz): Pass

Field Strength of Fundamental and Harmonics Emissions						
Peak Value						
Frequency MHz	Measured Level @3m dB μ V/m	Correction Factor dB μ V/m	Field Strength dB μ V/m	Field Strength μ V/m	Limit @3m μ V/m	E-Field Polarity
2474.0	59.6	27.9	87.5	23,713.7	500,000	Horizontal
* 4948.0	1.2	32.1	33.3	46.2	5,000	Horizontal
* 7422.0	0.2	38.6	38.8	87.1	5,000	Horizontal
9896.0	Emissions detected are more than 20 dB below the FCC Limits				5,000	Horizontal
* 12370.0					5,000	Horizontal
14844.0					5,000	Horizontal
17318.0					5,000	Horizontal
* 19792.0					5,000	Horizontal
22266.0					5,000	Horizontal
24740.0					5,000	Horizontal

Field Strength of Fundamental and Harmonics Emissions						
Average Value						
Frequency MHz	Measured Level @3m dB μ V/m	Correction Factor dB μ V/m	Field Strength dB μ V/m	Field Strength μ V/m	Limit @3m μ V/m	E-Field Polarity
2474.0	45.9	27.9	73.8	4,897.8	50,000	Horizontal
* 4948.0	-0.6	32.1	31.5	37.6	500	Horizontal
* 7422.0	-1.4	38.6	37.2	72.4	500	Horizontal
9896.0	Emissions detected are more than 20 dB below the FCC Limits				500	Horizontal
* 12370.0					500	Horizontal
14844.0					500	Horizontal
17318.0					500	Horizontal
* 19792.0					500	Horizontal
22266.0					500	Horizontal
24740.0					500	Horizontal

Remarks: The fundamental frequency was not included in the pre-scan plot, a 2.4G notch filter was added prior to the Receiver, please refer the band-edge plot for the level of fundamental frequency.

No additional spurious emissions found between lowest internal used/generated frequency and 30 MHz

*: Denotes restricted band of operation.

Measurements were made using a peak detector. Any emission less than 1000 MHz and falling within the restricted bands of FCC Rules Part 15 Section 15.205 and the limits of FCC Rules Part 15 Section 15.209 were applied.

Calculated measurement uncertainty	: 9kHz to 30MHz	2.4dB
	30MHz to 18GHz	5.0dB
	18GHz – 26.5Hz:	5.24dB

The Hong Kong Standards and Testing Centre Limited

10 Dai Wang Street, Taipo Industrial Estate, Tai Po, N.T., Hong Kong

Tel: +852 2666 1888 Fax: +852 2664 4353 Email: hkstc@stc.group Website: www.stc.group

This report shall not be reproduced unless with prior written approval from The Hong Kong Standards and Testing Centre Limited.

For Conditions of Issuance of this test report, please refer to "Conditions of Issuance of Test Reports" section or Website.



Test Report

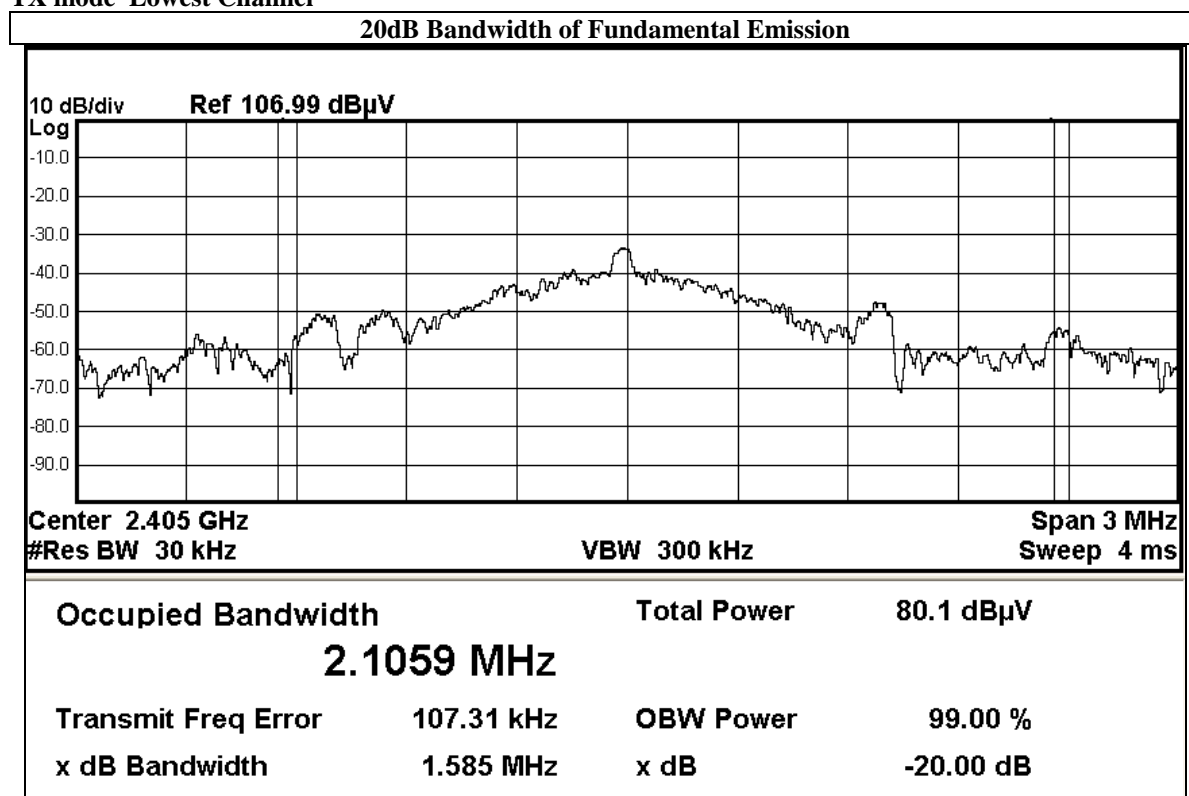
Date : 2018-11-28
 No. : HM18090017

Page 10 of 23

Limits for 20dB Bandwidth of Fundamental Emission:

Frequency Range [MHz]	20dB Bandwidth [MHz]
2405.0	1.59

TX mode Lowest Channel





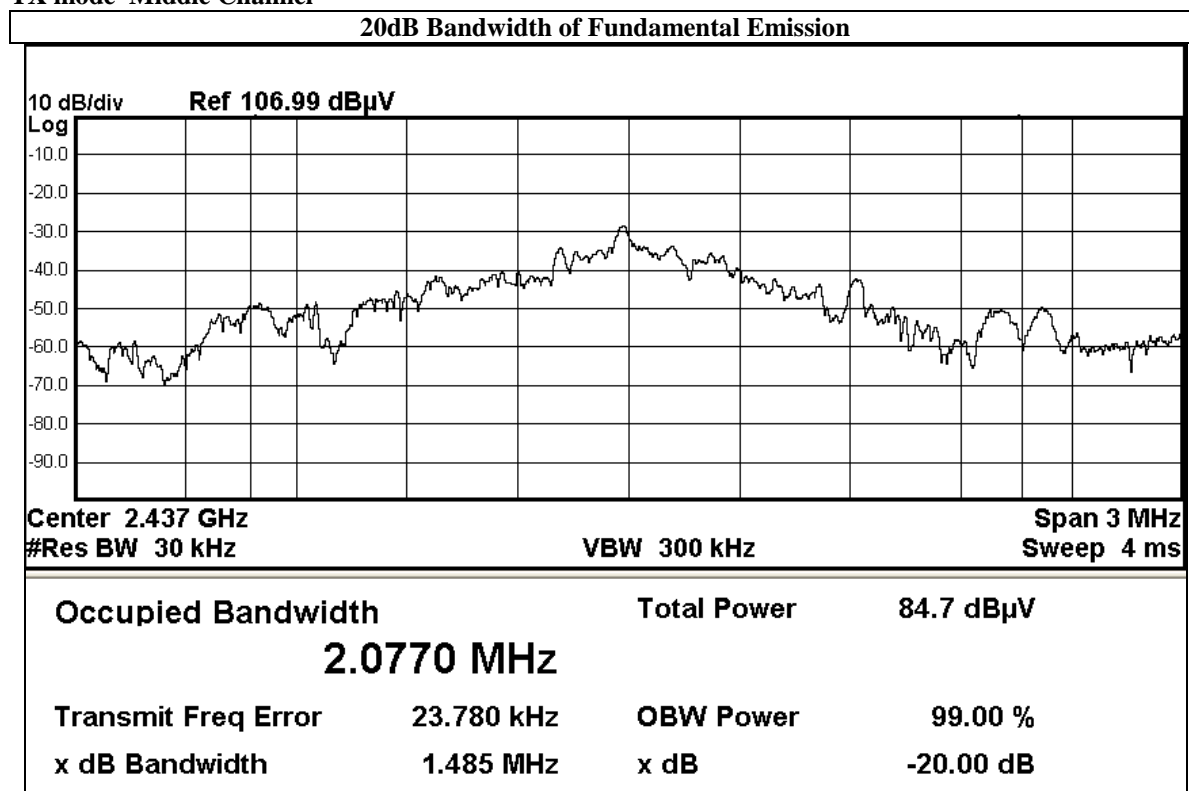
Test Report

Date : 2018-11-28
 No. : HM18090017

Page 11 of 23

Frequency Range [MHz]	20dB Bandwidth [MHz]
2437.0	1.49

TX mode Middle Channel





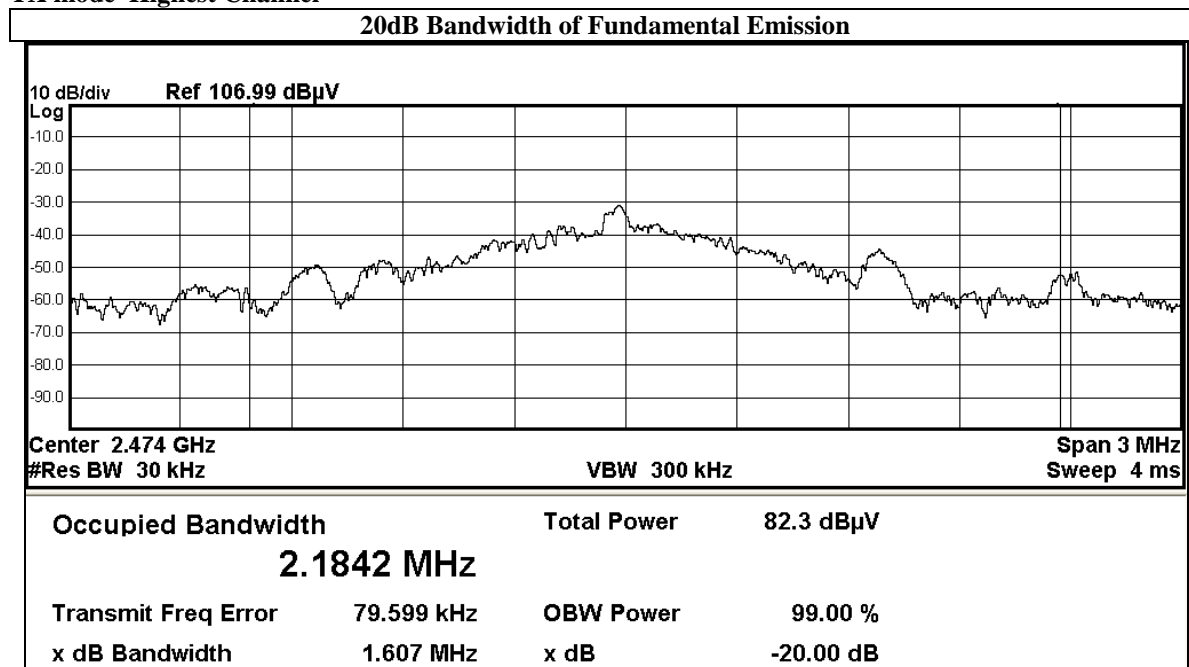
Test Report

Date : 2018-11-28
 No. : HM18090017

Page 12 of 23

Frequency Range [MHz]	20dB Bandwidth [MHz]
2474.0	1.61

TX mode Highest Channel



The Hong Kong Standards and Testing Centre Limited

10 Dai Wang Street, Taiipo Industrial Estate, Tai Po, N.T., Hong Kong

Tel: +852 2666 1888 Fax: +852 2664 4353 Email: hkstc@stc.group Website: www.stc.group

This report shall not be reproduced unless with prior written approval from The Hong Kong Standards and Testing Centre Limited.

For Conditions of Issuance of this test report, please refer to "Conditions of Issuance of Test Reports" section or Website.



Test Report

Date : 2018-11-28
 No. : HM18090017

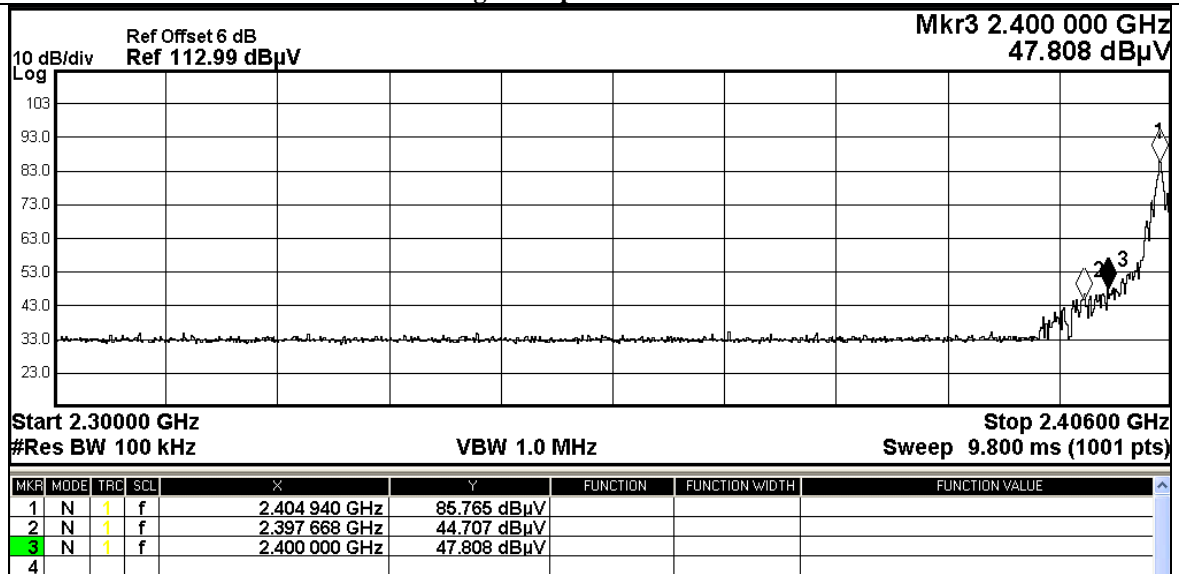
Page 13 of 23

Band Edge Measurement:

TX mode

Frequency Range [MHz]	Radiated Emission Attenuated below the Fundamental [dB]
2400MHz – Lowest Fundamental	38.0

Band Edge Compliance Measurement





Test Report

Date : 2018-11-28
 No. : HM18090017

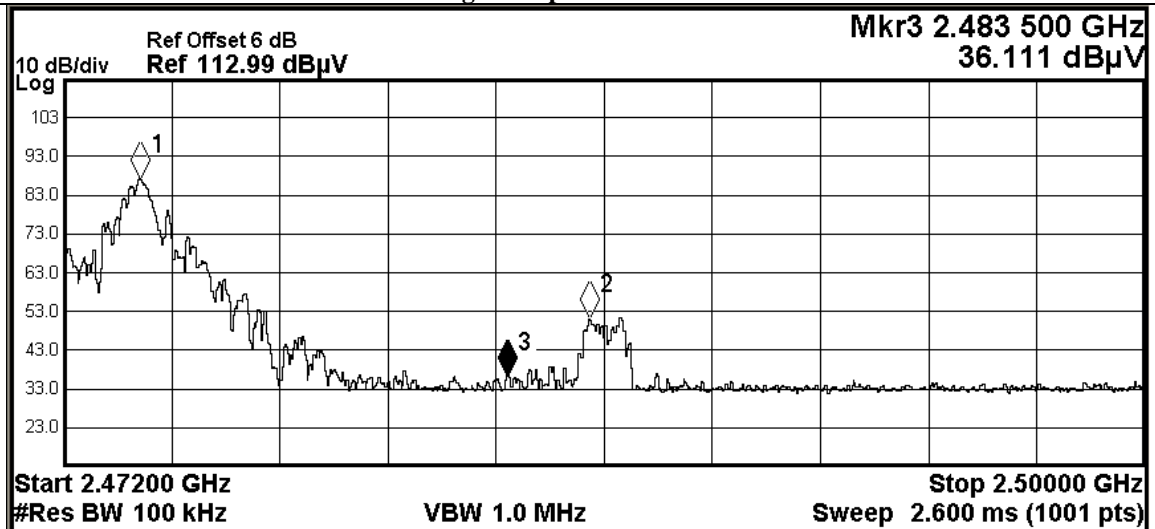
Page 14 of 23

Band Edge Measurement:

TX mode

Frequency Range [MHz]	Radiated Emission Attenuated below the Fundamental [dB]
Highest Fundamental – 2483.5MHz	51.1

Band Edge Compliance Measurement



MKR	MODE	TRC	SCL	X	Y	FUNCTION	FUNCTION WIDTH	FUNCTION VALUE
1	N	1	f	2.473 988 GHz	87.205 dB μ V			
2	N	1	f	2.485 636 GHz	51.096 dB μ V			
3	N	1	f	2.483 500 GHz	36.111 dB μ V			
4								

The Hong Kong Standards and Testing Centre Limited

10 Dai Wang Street, Taiipo Industrial Estate, Tai Po, N.T., Hong Kong

Tel: +852 2666 1888 Fax: +852 2664 4353 Email: hkstc@stc.group Website: www.stc.group

This report shall not be reproduced unless with prior written approval from The Hong Kong Standards and Testing Centre Limited.

For Conditions of Issuance of this test report, please refer to "Conditions of Issuance of Test Reports" section or Website.



Test Report

Date : 2018-11-28
No. : HM18090017

Page 15 of 23

Result of TX mode , Band-edge measurement: PASS

Field Strength of Fundamental and Harmonics Emissions						
Peak Value						
Frequency MHz	Measured Level @3m dB μ V/m	Correction Factor dB μ V/m	Field Strength dB μ V/m	Field Strength μ V/m	Limit @3m μ V/m	E-Field Polarity
2397.7	16.9	27.9	44.8	173.8	5,000	Horizontal
2485.6	23.2	27.9	51.1	358.9	5,000	Horizontal

Field Strength of Fundamental and Harmonics Emissions						
Average Value						
Frequency MHz	Measured Level @3m dB μ V/m	Correction Factor dB μ V/m	Field Strength dB μ V/m	Field Strength μ V/m	Limit @3m μ V/m	E-Field Polarity
2397.7	4.2	27.9	32.1	40.3	500	Horizontal
2485.6	8.4	27.9	36.3	65.3	500	Horizontal

The Hong Kong Standards and Testing Centre Limited

10 Dai Wang Street, Taiipo Industrial Estate, Tai Po, N.T., Hong Kong

Tel: +852 2666 1888 Fax: +852 2664 4353 Email: hkstc@stc.group Website: www.stc.group

This report shall not be reproduced unless with prior written approval from The Hong Kong Standards and Testing Centre Limited.

For Conditions of Issuance of this test report, please refer to "Conditions of Issuance of Test Reports" section or Website.



Test Report

Date : 2018-11-28
No. : HM18090017

Page 16 of 23

Limits for Radiated Emissions [FCC 47 CFR 15.209]:

Frequency Range [MHz]	Quasi-Peak Limits [μ V/m]
0.009-0.490	2400/F (kHz)
0.490-1.705	24000/F (kHz)
1.705-30	30
30-88	100
88-216	150
216-960	200
Above960	500

The emission limits shown in the above table are based on measurement employing a CISPR quasi-peak detector and above 1000MHz are based on measurements employing an average detector.

Result of Tx mode, (9kHz – 30MHz): PASS

Emissions detected are more than 20 dB below the FCC Limits

The Hong Kong Standards and Testing Centre Limited

10 Dai Wang Street, Taiipo Industrial Estate, Tai Po, N.T., Hong Kong

Tel: +852 2666 1888 Fax: +852 2664 4353 Email: hkstc@stc.group Website: www.stc.group

This report shall not be reproduced unless with prior written approval from The Hong Kong Standards and Testing Centre Limited.

For Conditions of Issuance of this test report, please refer to "Conditions of Issuance of Test Reports" section or Website.

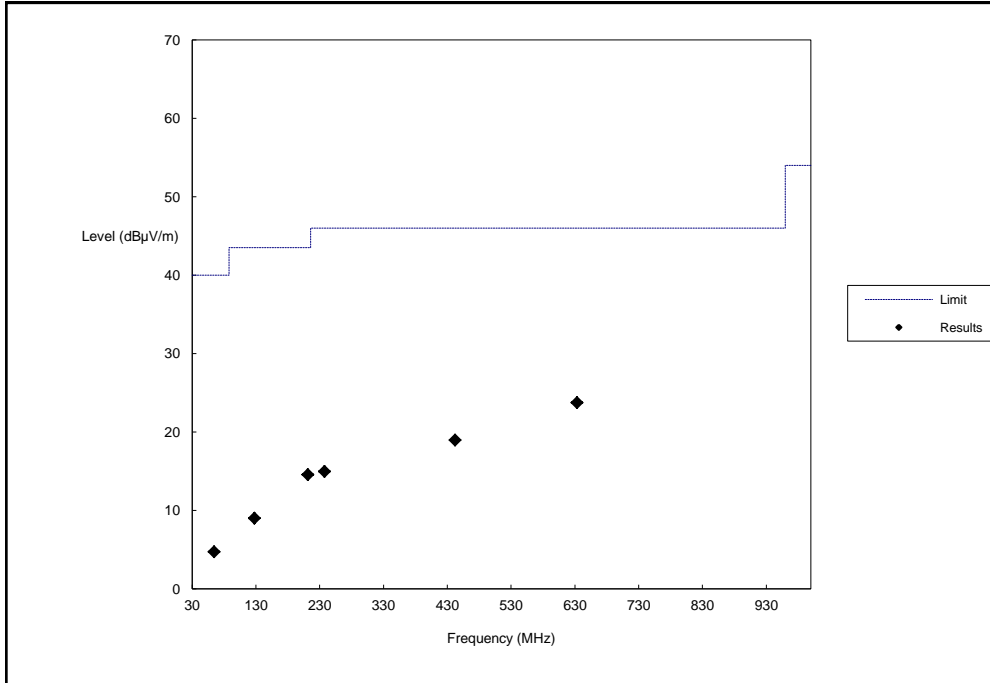


Test Report

Date : 2018-11-28
 No. : HM18090017

Page 17 of 23

Result of Tx mode, (30MHz – 1GHz): PASS



Field Strength of Fundamental and Harmonics Emissions						
Quasi-Peak Value						
Frequency MHz	Measured Level @3m dBµV/m	Correction Factor dBµV/m	Field Strength dBµV/m	Field Strength µV/m	Limit @3m µV/m	E-Field Polarity
64.3	3.5	1.2	4.7	1.7	100	Vertical
127.8	1.4	7.6	9.0	2.8	150	Horizontal
211.4	3.3	11.2	14.5	5.3	150	Horizontal
237.4	2.7	12.3	15.0	5.6	200	Horizontal
442.5	1.3	17.7	19.0	8.9	200	Horizontal
633.4	2.4	21.3	23.7	15.4	200	Horizontal



Test Report

Date : 2018-11-28
No. : HM18090017

Page 18 of 23

Result of Receiver mode, (9kHz – 30MHz): PASS

Emissions detected are more than 20 dB below the Limits

Result of Receiver mode, (30MHz – 1GHz): PASS

Emissions detected are more than 20 dB below the Limits

Result of Receiver mode, (1GHz – 18GHz): PASS

Field Strength of Fundamental and Harmonics Emissions						
Peak Value						
Frequency MHz	Measured Level @3m dB μ V/m	Correction Factor dB μ V/m	Field Strength dB μ V/m	Field Strength μ V/m	Limit @3m μ V/m	E-Field Polarity
2437.0	1.9	27.9	29.8	30.9	5,000	Vertical

Field Strength of Fundamental and Harmonics Emissions						
Average Value						
Frequency MHz	Measured Level @3m dB μ V/m	Correction Factor dB μ V/m	Field Strength dB μ V/m	Field Strength μ V/m	Limit @3m μ V/m	E-Field Polarity
2437.0	-1.1	27.9	26.8	21.9	500	Vertical

Remarks:

No additional spurious emissions found between lowest internal used/generated frequency and 30 MHz
Correction Factor included Antenna Factor and Cable Attenuation.

Calculated measurement uncertainty : (9kHz – 30MHz): 2.4dB
(30MHz – 1GHz): 5.0dB
(1GHz - 18GHz): 5.0dB
(1GHz - 18GHz): 5.24dB

The Hong Kong Standards and Testing Centre Limited

10 Dai Wang Street, Taiipo Industrial Estate, Tai Po, N.T., Hong Kong

Tel: +852 2666 1888 Fax: +852 2664 4353 Email: hkstc@stc.group Website: www.stc.group

This report shall not be reproduced unless with prior written approval from The Hong Kong Standards and Testing Centre Limited.
For Conditions of Issuance of this test report, please refer to "Conditions of Issuance of Test Reports" section or Website.



Test Report

Date : 2018-11-28
No. : HM18090017

Page 19 of 23

Appendix A

LIST OF MEASUREMENT EQUIPMENT

Radiated Emission

EQP NO.	DESCRIPTION	MANUFACTURER	MODEL NO.	SERIAL NO.	LAST CAL	DUE CAL
EM215	MULTIDEVICE CONTROLLER	EMCO	2090	00024676	N/A	N/A
EM217	ELECTRIC POWERED TURNTABLE	EMCO	2088	00029144	N/A	N/A
EM218	ANECHOIC CHAMBER	ETS-LINDGREN	FACT-3	--	2018/04/24	2019/04/24
EM356	ANTENNA POSITIONING TOWER	ETS-LINDGREN	2171B	00150346	N/A	N/A
EM355	BICONILOG ANTENNA	ETS-LINDGREN	3143B	00201783	2017/03/15	2019/03/15
EM229	EMI TEST RECEIVER	R&S	ESIB40	100248	2018/06/01	2019/06/01
EM299	DOUBLE-RIDGED WAVEGUIDE HORN ANTENNA	ETS-LINDGREN	3115	00114120	2018/04/27	2020/04/27
EM300	PYRAMIDAL STANDARD GAIN HORN ANTENNA	ETS-LINDGREN	3160-09	00130130	2018/05/13	2020/05/13
EM353	LOOP ANTENNA	ETS_LINDGREN	6502	00206533	2018/03/16	2020/03/16

Remarks:

CM Corrective Maintenance
N/A Not Applicable or Not Available
TBD To Be Determined

The Hong Kong Standards and Testing Centre Limited

10 Dai Wang Street, Taipo Industrial Estate, Tai Po, N.T., Hong Kong

Tel: +852 2666 1888 Fax: +852 2664 4353 Email: hkstc@stc.group Website: www.stc.group

This report shall not be reproduced unless with prior written approval from The Hong Kong Standards and Testing Centre Limited.

For Conditions of Issuance of this test report, please refer to "Conditions of Issuance of Test Reports" section or Website.

Test Report

Date : 2018-11-28
No. : HM18090017

Page 20 of 23

Appendix B

Photograph(s) of EUT

Front View of the product



Rear View of the product



The Hong Kong Standards and Testing Centre Limited

10 Dai Wang Street, Taiipo Industrial Estate, Tai Po, N.T., Hong Kong

Tel: +852 2666 1888 Fax: +852 2664 4353 Email: hkstc@stc.group Website: www.stc.group

This report shall not be reproduced unless with prior written approval from The Hong Kong Standards and Testing Centre Limited.

For Conditions of Issuance of this test report, please refer to "Conditions of Issuance of Test Reports" section or Website.

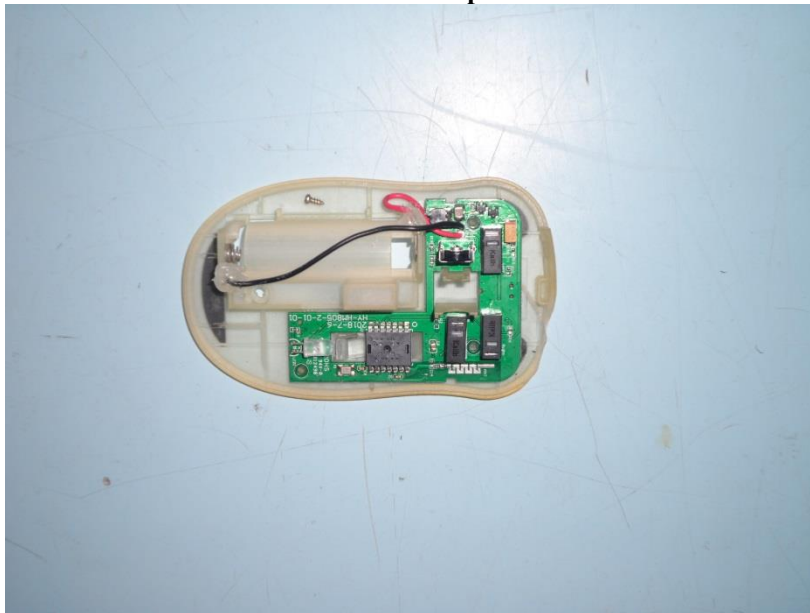
Test Report

Date : 2018-11-28
No. : HM18090017

Page 21 of 23

Photograph(s) of EUT

Inner Circuit Top View



Inner Circuit Bottom View



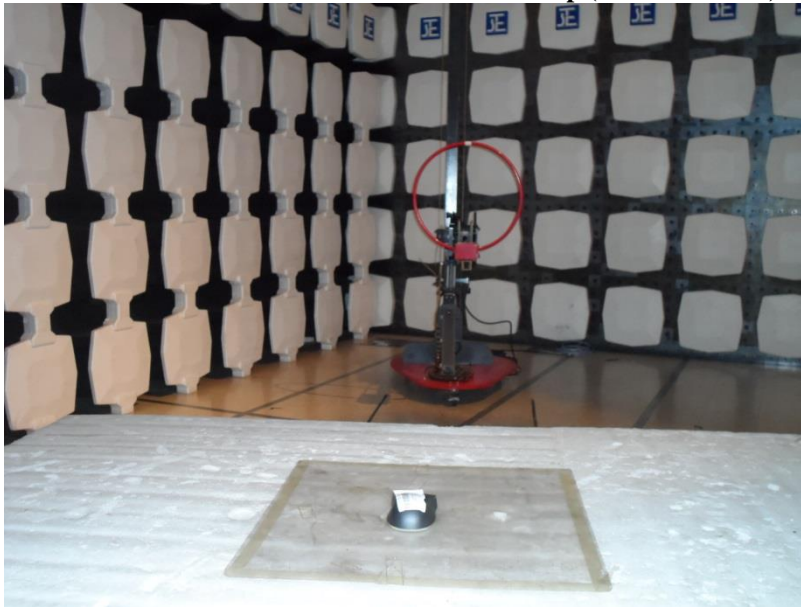
Test Report

Date : 2018-11-28
No. : HM18090017

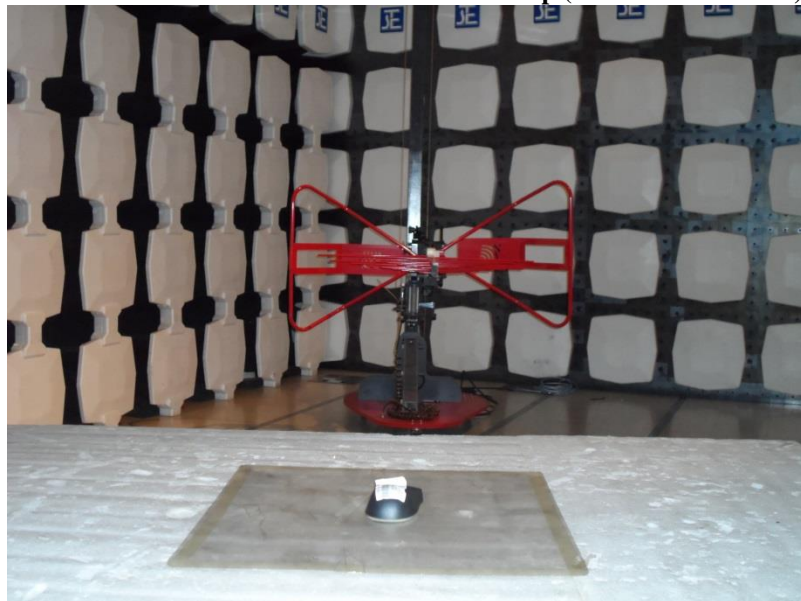
Page 22 of 23

Photograph(s) of EUT

Measurement of Radiated Emission Test Set Up (9kHz – 30MHz)



Measurement of Radiated Emission Test Set Up (30MHz – 1000MHz)



The Hong Kong Standards and Testing Centre Limited

10 Dai Wang Street, Tai Po Industrial Estate, Tai Po, N.T., Hong Kong

Tel: +852 2666 1888 Fax: +852 2664 4353 Email: hkstc@stc.group Website: www.stc.group

This report shall not be reproduced unless with prior written approval from The Hong Kong Standards and Testing Centre Limited.
For Conditions of Issuance of this test report, please refer to "Conditions of Issuance of Test Reports" section or Website.

Test Report

Date : 2018-11-28
No. : HM18090017

Page 23 of 23

Photograph(s) of EUT

Measurement of Radiated Emission Test Set Up (above 1000MHz)



******* End of Test Report *******

Conditions of Issuance of Test Reports

1. All samples and goods are accepted by The Hong Kong Standards & Testing Centre Limited (the "Company") solely for testing and reporting in accordance with the following terms and conditions. The Company provides its services on the basis that such terms and conditions constitute express agreement between the Company and any person, firm or company requesting its services (the "Clients").
2. Any report issued by the Company as a result of this application for testing service (the "Report") shall be issued in confidence to the Clients and the Report will be strictly treated as such by the Company. It may not be reproduced either in its entirety or in part and it may not be used for advertising or other unauthorized purposes without the written consent of the Company. The Clients to whom the Report is issued may, however, show or send it, or a certified copy thereof prepared by the Company to his customer, supplier or other persons directly concerned. The Company will not, without the consent of the Clients, enter into any discussion or correspondence with any third party concerning the contents of the Report, unless required by the relevant governmental authorities, laws or court orders.
3. The Company shall not be called or be liable to be called to give evidence or testimony on the Report in a court of law without its prior written consent, unless required by the relevant governmental authorities, laws or court orders.
4. The Report refers only to the sample tested and does not apply to the bulk, unless the sampling has been carried out by the Company and is stated as such in the Report.
5. In the event of the improper use the report as determined by the Company, the Company reserves the right to withdraw it, and to adopt any other additional remedies which may be appropriate.
6. Sample submitted for testing are accepted on the understanding that the Report issued cannot form the basis of, or be the instrument for, any legal action against the Company.
7. The Company will not be liable for or accept responsibility for any loss or damage howsoever arising from the use of information contained in any of its Reports or in any communication whatsoever about its said tests or investigations.
8. Clients wishing to use the Report in court proceedings or arbitration shall inform the Company to that effect prior to submitting the sample for testing.
9. Subject to the variable length of retention time for test data and report stored hereinto as to otherwise specifically required by individual accreditation authorities, the Company will only keep the supporting test data and information of this test report for a period of three years. The data and information will be disposed of after the aforementioned retention period has elapsed. Under no circumstances shall we provide any data and information which has been disposed of after the retention period. Under no circumstances shall we be liable for damages of any kind, including (but not limited to) compensatory damages, lost profits, lost data, or any form of special, incidental, indirect, consequential or punitive damages of any kind, whether based on breach of contract of warranty, tort (including negligence), product liability or otherwise, even if we are informed in advance of the possibility of such damages.
10. Issuance records of the Report are available on the internet at www.stc-group.org. Further enquiry of validity or verification of the Reports should be addressed to the Company.