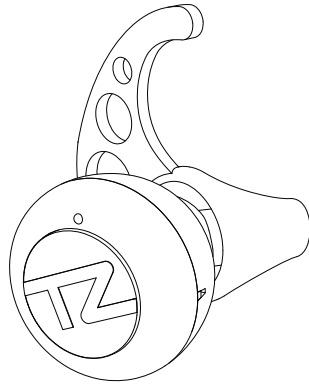


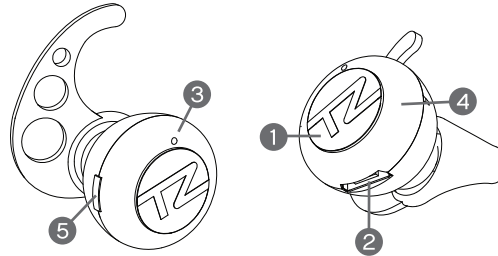
**TZumi**

# Handsfree MicroEarPiece



## User Guide

### PRODUCT OVERVIEW



#### PACKAGE CONTENTS

- Bluetooth Micro Ear Piece
- Micro USB cable

- 1. Power / Multi-functional ON/OFF, Call Answer, Reject, Redial, Hang Up, Call to Audio.**
- 2. Charge**
- 3. LED Indicator**
- 4. Microphone**
- 5. Volume Up/Down**

### POWER ON/OFF

**To power ON:** Press and hold the Multifunction button for about 5 seconds until the device flashes blue. You should hear a five tone sound.

**To power OFF:** Press and hold the Multifunction button for about 5 seconds until the device lights turn off. You should hear a five tone sound.

1

### CHARGING MICRO EAR PIECE

The Micro Ear Piece has an internal rechargeable battery. The battery must be fully charged prior to use. Charging time is approximately 2 hrs. Your Micro Ear Piece cannot be used while charging.

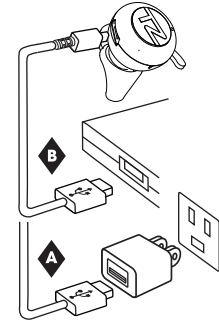
Red light ON – Charging  
Blue light ON – Fully charged

#### A Via AC Adapter Wall Charger

Using the provided Micro USB cable, connect the Mini Ear Mic (Micro USB port) to the AC Adapter (USB port).

#### B Via Computer

Using the provided Micro USB cable, connect the Micro Ear Piece to the computer or laptop (USB port).



### PAIRING THE MICRO EAR PIECE TO BLUETOOTH DEVICE

Make sure the Bluetooth function is available on your cell phone. Specific pairing procedures will be different depending on different cell phone. For detailed information, please refer to your cell phone's User Guide.

- If no device connection is made within 5 minutes of the Mini Ear Mic being switched on, the Micro Ear Piece will automatically be switched off to save power.

over

2

### PAIRING TO BLUETOOTH DEVICE (CONTINUED):

- After a successful pairing devices will memorize each. Therefore, no pairing will be needed next time.

1. Press and hold Multi-function button for 5-10 seconds until the earphone flashes blue and red alternately.
2. Keep the distance between the cell phone and the Micro Ear Piece within 3 feet (for pairing only).
3. Activate the Bluetooth function of the cell phone, to search for the Bluetooth devices. After finishing the search, select "Tzumi Ear-Piece" in the device list displayed. If you phone asks for a passcode, enter 0000 (four zeros).
4. Press "yes" or "enter" key to confirm the successful pairing.
5. After the successful connection, you will hear "The headset is connected" and the LED indicator should flash blue every 2 seconds.
6. Power off your Micro Ear Piece and turn off your Bluetooth device.
7. If pairing was unsuccessful, repeat steps 1-3 above.

### CONNECTING TO OTHER BLUETOOTH DEVICES

**Note:** Your Micro Ear Piece can only be connected to **one** Bluetooth device at a time.

1. In order to connect to the other Bluetooth device, you must first close the current Bluetooth connection.
2. Follow the above steps (under **PAIRING TO BLUETOOTH DEVICE**) to pair your Micro Ear Piece to another Bluetooth device.

3

### MICRO EAR PIECE CONTROLS

#### Answer a call

Press the Multifunction button once.

#### Reject a call

Double-press the Multifunction button.

#### End a call

Press the Multifunction button once.

#### Redial the last call

Double-press the Multifunction button while in standby mode. The cell phone will redial the last number.

#### Voice Dialing

Press and hold the Multifunction button for about 3 seconds while on standby. Repeat to cancel command.

#### Switch call audio output

Press and hold the Multifunction button for about 3 seconds during a call to switch the audio output to your device. Repeat to return call to Micro Ear Piece.

#### Volume

Keep pressing the Volume button to increase the volume. When it reaches its maximum volume, the volume will decrease.

#### BATTERY DISPOSAL:

This product contains a lithium polymer battery. Lithium Polymer batteries are environmentally safe when fully discharged. Please refer to your local and state laws for battery disposal procedures.

4

### IMPORTANT SAFEGUARDS

- Do not use this unit for anything other than its intended use.
- Keep the unit away from heat source, direct sunlight, humidity, water or any other liquid.
- Do not expose the device to extremely high or low temperatures, as it may damage the battery.
- Do not operate the unit if it has been wet or moist to prevent against electric shock and/or injury to yourself and damage to the unit.
- Do not use the unit if it has been dropped or damaged in any way.
- Repairs to electrical equipment should only be performed by a qualified electrician. Improper repairs may place the user at serious risk.
- Keep the unit out of reach of children.
- This unit is not a toy.

### SPECIFICATIONS

Bluetooth Version	Bluetooth V3.0 + EDR
Distance	Up to 33ft (10m)
Battery	Polymer Lithium-Ion 3.7V 40mAh
Frequency	2402—2483.5MHz
Standby Time	Up to 40 hours
Charging Time	2 hours
Talk Time	3.5-4 hours
Input	DC: +5.0±0.25VA
Driver Unit	8mm
Sensitivity	92dB±3dB
Rated power	3mW±15%

TZUMI® BT Micro Ear Piece Distributed by TZUMI® INC. NY, NY 10016  
©Copyright 2015 TZUMI® All Rights Reserved. Made In China.

The Bluetooth trademarks are owned by Bluetooth SIG, Inc. Other trademarks and trade names in this document are those of their respective owners. © 2015 Bluetooth SIG, Inc. Subject to change without prior notice.

---

## **FCC Statement:**

This equipment has been tested and found to comply with the limits for a Class B digital device, pursuant to part 15 of the FCC Rules. These limits are designed to provide reasonable protection against harmful interference in a residential installation. This equipment generates, uses and can radiate radio frequency energy and, if not installed and used in accordance with the instructions, may cause harmful interference to radio communications.

However, there is no guarantee that interference will not occur in a particular installation. If this equipment does cause harmful interference to radio or television reception, which can be determined by turning the equipment off and on, the user is encouraged to try to correct the interference by one or more of the following measures:

- Reorient or relocate the receiving antenna.
- Increase the separation between the equipment and receiver.
- Connect the equipment to an outlet on a circuit different from that to which the receiver is connected.

This device complies with part 15 of the FCC rules. Operation is subject to the following two conditions: (1) This device may not cause harmful interference, and (2) this device must accept any interference received, including interference that may cause undesired operation.

**Note: Modifications to this product will void the user's authority to operate this equipment.**