

ExcelStor wireless storage and media server user's manual

Thank you for selecting an ExcelStor wireless storage and media server. This user's manual will guide you through the use of your server.

Note: Printed capacity on the product label is Decimal.

(Decimal: 1GB=1,000,000,000 Bytes)

Computer's hardware & software recognize the HDD capacity with Binary.

(Binary: 1GB=1,073,741,824 Bytes)

Accessable capacity may vary depending on operating environment and formatting.

Package content

1	Wireless storage and media server	1
2	USB cable	1
3	AC power adapter	1
4	Travel pouch	1
5	User's manual	1
6	Quick start guide	1

1 : Product Specification

- **Build-in hard drive**

- 1.8" IDE interface
- 60GB / 120GB

- **Media file formats supported for RSP streaming**

Music - MP3, WMA, AAC

Photo - JPEG, PNG

Video - MPEG2, MPEG4, H.264, H.263, AMR, WMV

- **File system supported**

FAT32

- **Wireless security**

WPA2, WPA-PSK, WEP64, WEP128

- **Battery**

LithiumPolymer 2000mAh, 3.7V, user-replaceable

Standby: 48 hours

Operating: 3 hours

Charging cycles (minimum): 500

- **System requirements**

PC with Windows 2000/XP/Vista, Linux 2.6.x or later

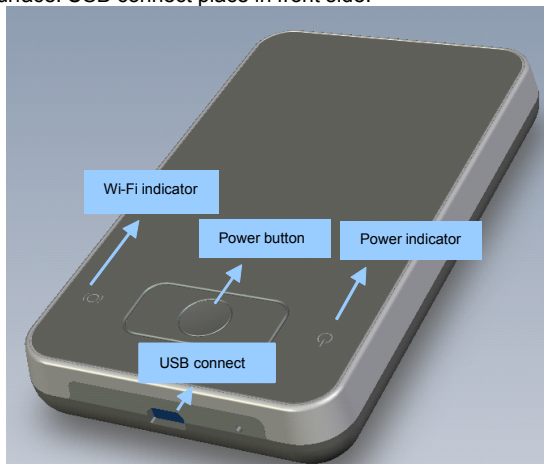
MAC OS X 10.3.x or later

PC, network router, mobile phone, game console or handheld
with 802.11 b/g Wi-Fi wireless capability

2 : Connection and LED

ExcelStor WSD is a media server with a build-in HDD that user can attach to and access via a wireless connection.

Power button, Power indicator, Wi-Fi indicator place in top surface. USB connect place in front side.



Note: "Power on" / "Power off" need to press power button for about 10 secs.

3 : LED indicator meaning

Power Indicator:

With Charger

Charging = Red, Solid ON

Fully Charged = Green, Solid ON

Pre-Boot Charging = Red, 1 Blink per second

Without Charger

Booting = Green, Solid ON

Ready = Green, 1 Blink per second

Standby = Green, 1 fast Blink per 2 seconds

Low Battery = Red, 3 fast blink per 2 seconds

Battery Critical = Red, 6 fast blink per 2 seconds (system will be shut off in next 5 minutes)

WIFI/HDD Indicator:

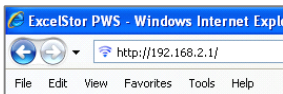
Connection with client established = Orange, Solid ON

HDD R/W = Orange, Blinking

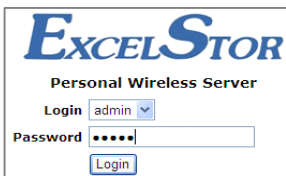
4 : Web browser management interface

4.1 Log in interface

Turn on your web browser (Microsoft Internet Explorer or others) in your laptop, cell phone, or other equipment with WiFi capability. Input <http://192.168.2.1/> in address bar. (picture 3.1.1) In logo in interface, use correct user name and password to log in. (default user name is "admin", password is "admin") (picture 3.1.2)。



Picture 3.1.1 address bar



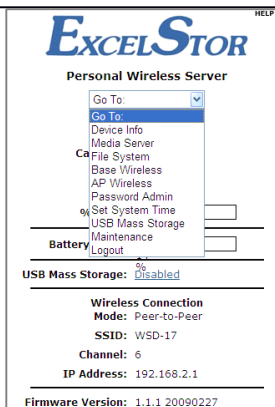
Picture 3.1.2 log in interface

4.2 User main interface

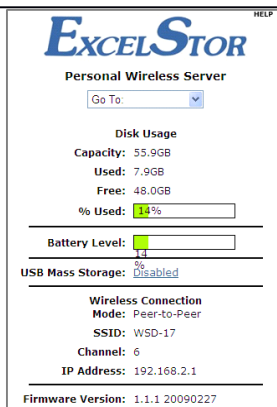
In main interface, user can enter each item via a pull-down menu, (picture 3.2.1). You can get detailed description of each item by link the "HELP" in top-right of screen.

➤ go to Device Info

In this page, you can view the basic information of you media server, such as disk usage, battery level, connection model, IP address and firmware version. (picture 3.2.2). You can click 并且您可以点击"USB Mass Storage: Disabled" to turn off "USB Mass Storage" function. Detailed operation please read paragraph "go to USB Mass Storage".



Picture 3.2.1 Fall-down menu

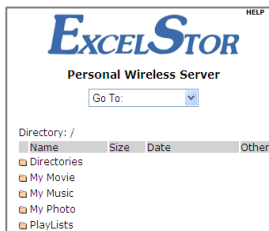


Picture 3.2.2 device information

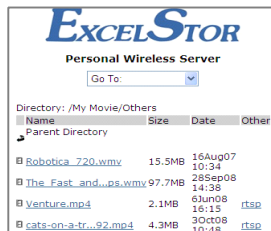
➤ go to Media Server

In this page, you can connect to media server and play video/audio save in it. You can enter a folder by click the folder icon.(picture 3.2.3), You can click one media icon to play it. (picture 3.2.4). If you want to return to previous menu, please click "Parent Directory" in the top.

Media content can only be identified when they were put into folder "audio" "audio" "images" under "media"






Picture 3.2.3 Media folder



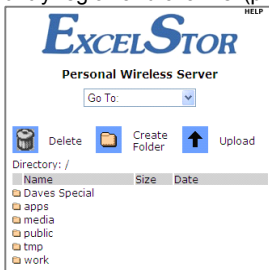
Picture 3.2.4 Media file

➤ go to File System

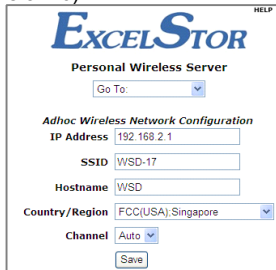
In this page, you can view and manage the whole file system,(picture 3.2.5). Click  Delete to delete folder, click  Create Folder to create a new folder, click  Upload to upload media file to current folder.

➤ go to Base Wireless

In this page, you can set IP address, SSID, Hostname, Country/region and channel (picture 3.2.6).



Picture 3.2.5 File system page



picture 3.2.6 Base wireless page

➤ go to AP Wireless

In this page, you can set the equipment SSID for each access point and set password for each access point.(picture 3.2.7).

Click "save" to save any changes. A message box will display to ask for confirmation to restart WSD.

Select "Ok" to restart now, and "cancel" to restart later.

➤ go to Password Admin

In this page, you can set or modify password of "admin" and "guest" (picture 3.2.8)

EXCELSTOR

Personal Wireless Server

Go To:

Access Point Network Configuration

Mode: ☒ DHCP ☐ Fixed IP

IP Address:

Subnet Mask:

Access Point 1

SSID:

Security Setting: ☒ Disabled ☐ WEP64 ☐ WEP128 ☐ WPA ☐ WPA2

Security Key:

picture3.2.7 AP security setting page

EXCELSTOR

Personal Wireless Server

Go To:

Admin Account

Username: admin

Password:

Confirm Password:

Guest Account

Username: guest

Password:

Confirm Password:

picture 3.2.8 password setting page

- go to Set System Time

In this page, you can set system date, time, zone and time format. (picture 3.2.9).

- go to USB Mass Storage

In this page, you can enable / disable USB connection function.click then you can switch between enable/disable USB connection.(picture 3.2.10).

When you enabling USB Mass Storage, "Media Server" and "File System" are disabling automatically.

EXCELSTOR

Personal Wireless Server

Go To:

System Time

Date: Mar 13 2009

Time: 25

Time Zone: 8:00) China Coast

Format: ☒ 24Hr

Picture 3.2.9 system time setup

EXCELSTOR

Personal Wireless Server

Go To:

USB Mass Storage: Disabled

Media Server: Enabled

Network/Web File System: Enabled

EXCELSTOR

Personal Wireless Server

Go To:

USB Mass Storage: Enabled

Media Server: Disabled

Network/Web File System: Disabled

picture 3.2.10 enable/disable USB connection

➤ go to Maintenance

In this page, you can resume to factory default setting, format drive and update firmware. (picture 3.2.11). (caution: please backup your data before these action. Otherwise, you may lost your data!)



Picture 3.2.11 Maintenance page

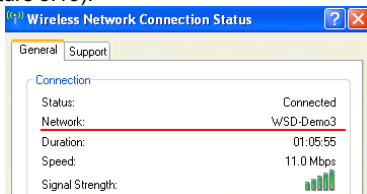
➤ go to Logout

Select this option, you will log out current user and return to log in page.

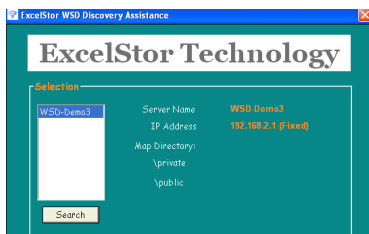
5 : WSD finder use guide

Finder is a attached program of WSD . You can use this program to connect to WSD and map it to a network drive. You can find it in the build-in HDD or you can download from Excelstor support website. www.excelstor.com

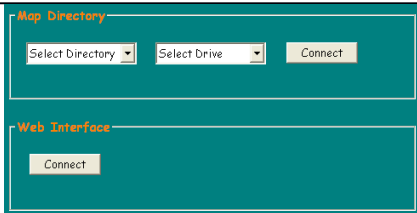
- When your network connect to WSD (Picture 5.1.1).
After you have searched WSD via finder.(picture 5.1.2) You can map it to a network drive via "Map Directory". You can launch the web browser interface to manage WSD via "Web Interface"(picture 5.1.3).



Picture 5.1.1 network connect to WSD



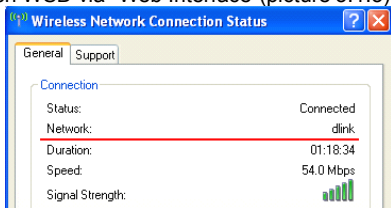
Picture 5.1.2 search for WSD



Picture 5.13 Mapping and visit WSD

- When your network connect to wireless router (picture 5.1.4)

Wireless router will assign DHCP IP address for all available WSD in network. After you have searched all WSD via finder.(picture 5.1.4) You can map them to a network drive via "Map Directory". You can launch the web browser interface to manage each WSD via "Web Interface"(picture 5.1.5).



Picture 5.1.4 network connect to wireless router



Picture 5.1.5 search for all WSD connected to router

6: Frequently asked question

1. Q: Why when I input correct IP address, web browser reminded "Internet Explorer cannot display the webpage"?

A: Before you accessing the WSD, you should connect WSD to your PC correctly. Please read the "Quick Start Guide" for detailed description.

2. Q: Why My PC cannot recognize WSD when it connect to USB port ?

A: you didn't turn on the USB Mass Storag of WSD, please access the WSD via wireless connection. Turn on the USB Mass Storage in web browser interface.(refer to chapter 4: go to USB mass storage).

Or you can connect to USB port after power off the WSD. it will automatically power on. Then you unplug it and plug it again. Then WSD should be recognized by PC.

Warranty limitation

Warranty is void if returned product exhibits a defect attributable to:

- Abuse, unreasonable use, mistreatment, or neglect
- Damage caused by the equipment or system with which the product is used
- Damage caused by modification or repair not made or authorized by ExcelStor
- Products whose ExcelStor Serial Number and/or Material Number label have been removed, torn or defaced
- Damage caused by use of non-ExcelStor packaging
- Damage caused by improper or improperly used packaging
- Damage caused by lack of ESD protection
- Products that are determined to be stolen

The product is warranted against workmanship and material defects and conforms to ExcelStor's specification for the particular product. The warranty period commences from the manufacturer's original shipping date. If the product is deemed defective due to workmanship or material defect, you may return it to the retailer where you bought the hard disk. For more detailed information, you may reach us at:

ExcelStor Technology

5F, #8 Building, Kaifu Industrial District,
7006 Caitian Road, Futian District, Shenzhen PRC 518035
Tel.: (86) 755-83346668
Fax: (86) 755-83275922
Website: www.excelstor.com
Technical support: techsupport@excelstor.com

For a Class B digital device or peripheral, the instructions furnished the user shall include the following or similar statement, placed in a prominent location in the text of the manual:

NOTE: This equipment has been tested and found to comply with the limits for a Class B digital device, pursuant to Part 15 of the FCC Rules. These limits are designed to provide reasonable protection against harmful interference in a residential installation. This equipment generates, uses and can radiate radio frequency energy and, if not installed and used in accordance with the instructions, may cause harmful interference to radio communications. However, there is no guarantee that interference will not occur in a particular installation.

If this equipment does cause harmful interference to radio or television reception, which can be determined by turning the equipment off and on, the user is encouraged to try to correct the interference by one or more of the following measures:

- Reorient or relocate the receiving antenna.

- Increase the separation between the equipment and receiver.
- Connect the equipment into an outlet on a circuit different from that to which the receiver is connected.
- Consult the dealer or an experienced radio/TV technician for help.

Note: RF exposure from the user's distance is 20cm.