

# TN400 Bluetooth Antenna Test Report

**WF-EM-1510-0067-A (WF0EM12-I080)**

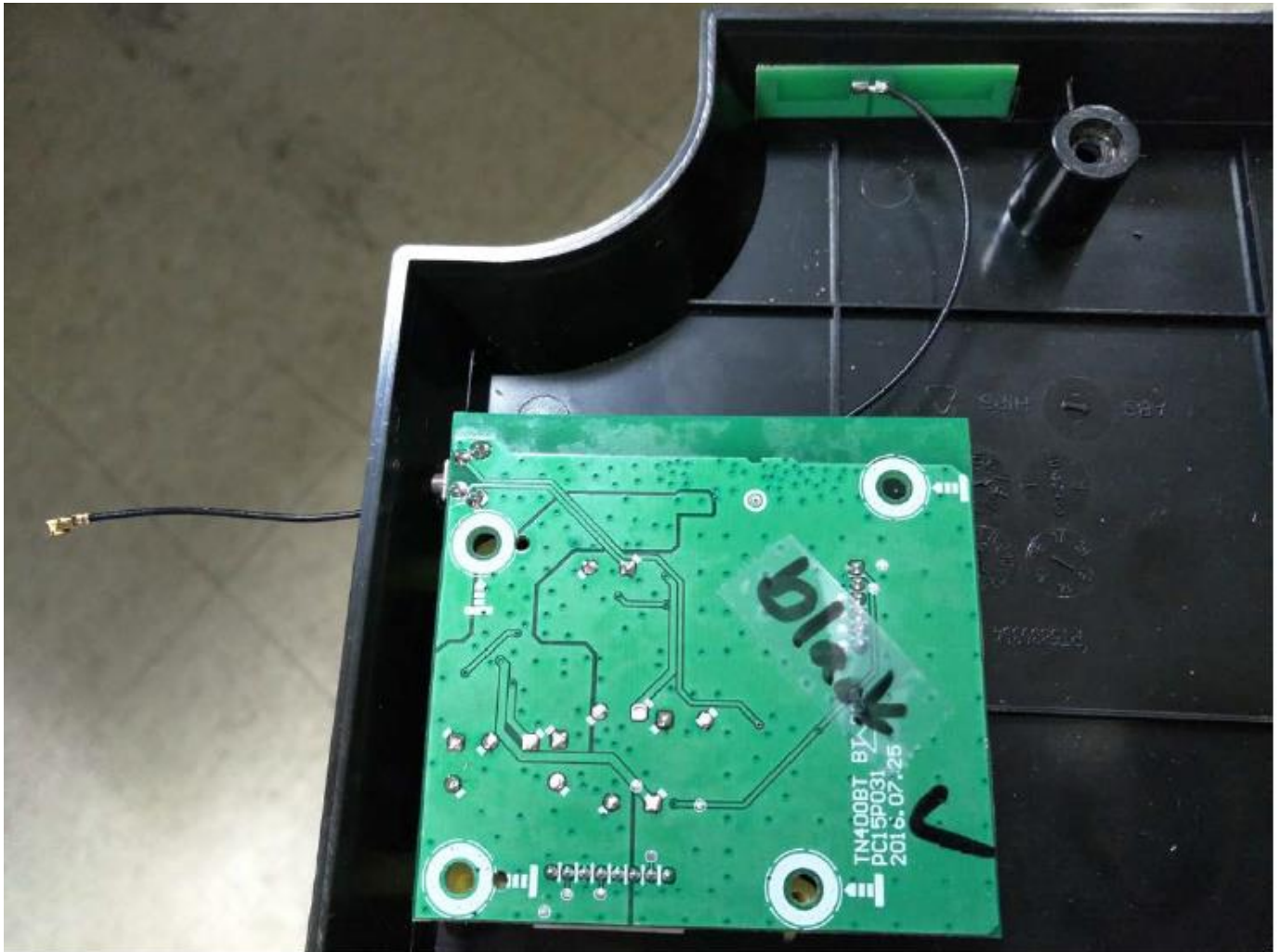
## *Antenna*



## 1. Antenna spec

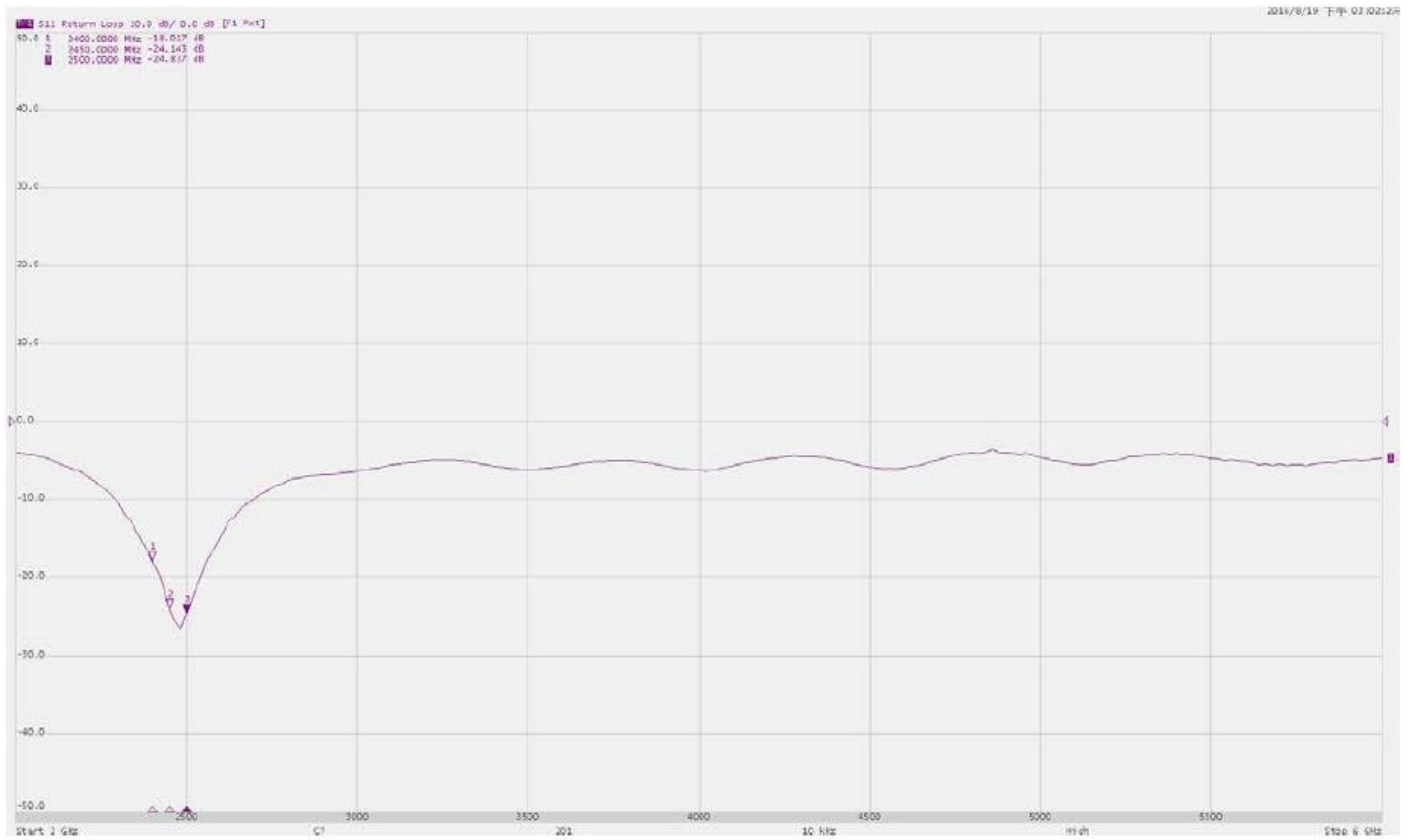
WF-EM-1510-0067-A (WF0EM12-I080)

### *Antenna*



## 2. Reference(S11&VSWR)

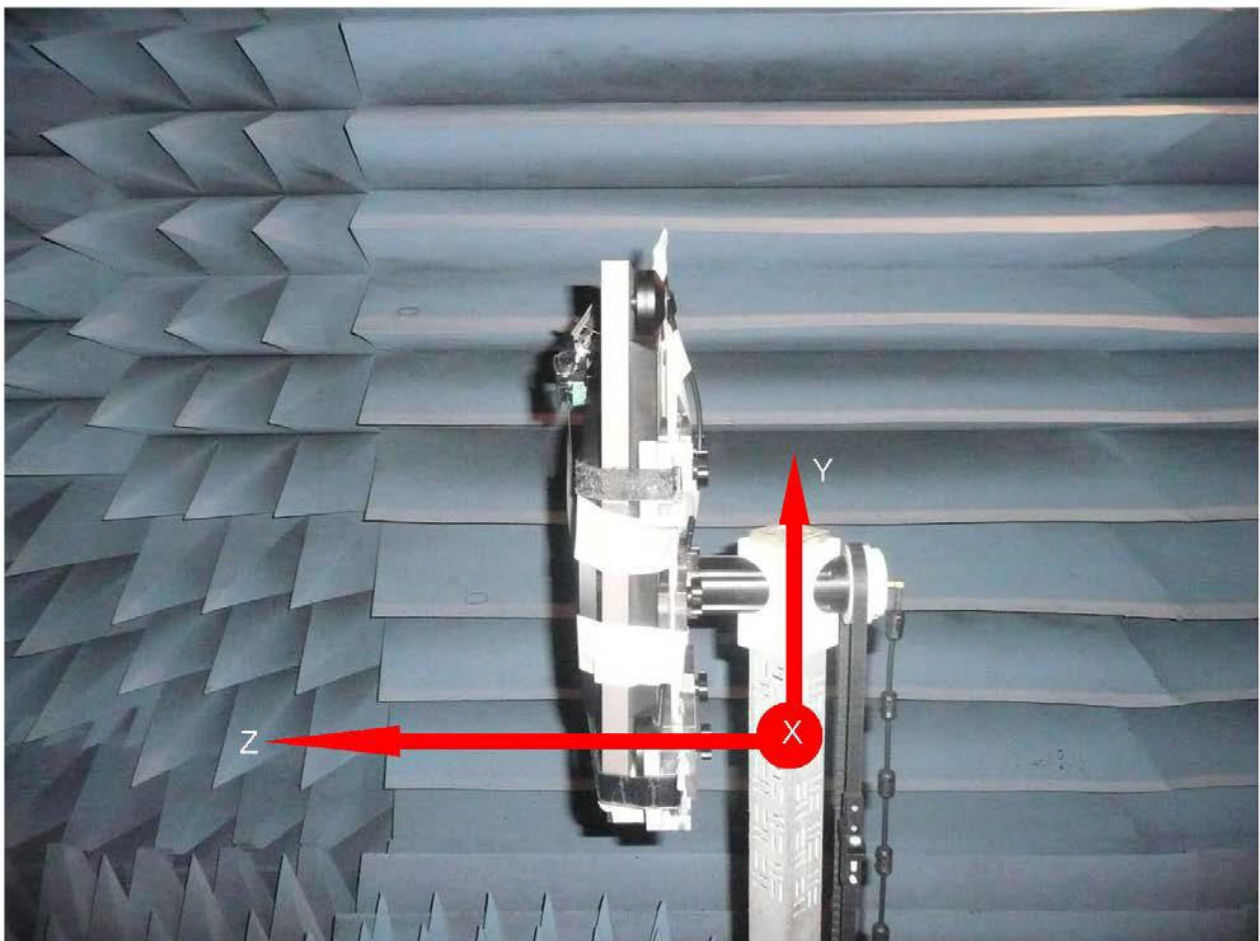
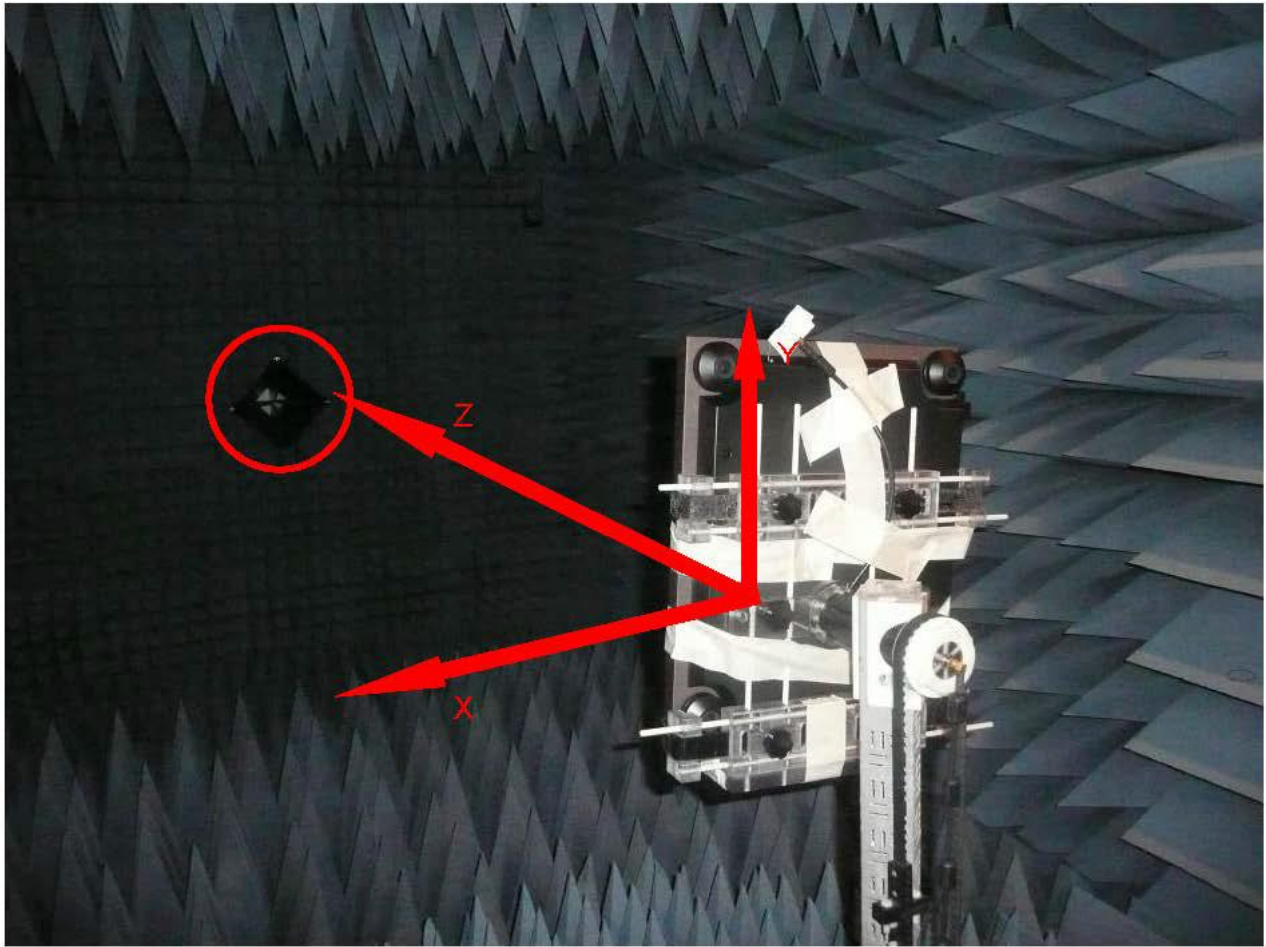
### Return loss



### VSWR



### 3. Test Set-up



# 4. Chamber

Test Date	2016/8/19		
Trade Name			
App.No			
Model Name			
Test Mode Free Space & Talking Position			
Communication System			
Channel	2400	2450	2500
Note	TN400-EM12-S		
Ant. Port Input Pwr. (dBm)	0	0	0
Tot. Rad. Pwr. (dBm)	-2.70407	-2.59269	-2.86766
Peak EIRP (dBm)	2.31176	1.45367	1.2694
Directivity (dBi)	5.01583	4.04635	4.13706
Efficiency (dB)	-2.70407	-2.59269	-2.86766
Efficiency (%)	53.6529	55.0467	51.6695

Job No.:160819-2400  
 Date:2016-08-19                      Time:15:32  
 Tested by: John

Center freq.(MHz): : 2400

