

## SPECIFICATION

Product : WIFI EMBEDDED ANTENNA

Descriptions : 2.4~2.5GHz+PCB+OD1.13 CABLE+IPEX

## SPECIFICATION

### ELECTICAL PROPERTIES

FREQUENCY RANGE ----- 2.4~2.5 GHz

VSWR-----  $\leq 2.0$

IMPEDANCE-----  $50\Omega$

GAIN----- 2dBi

### PHYSICAL PROPERTIES

WIRE----- OD1.13 CABLE BLACK

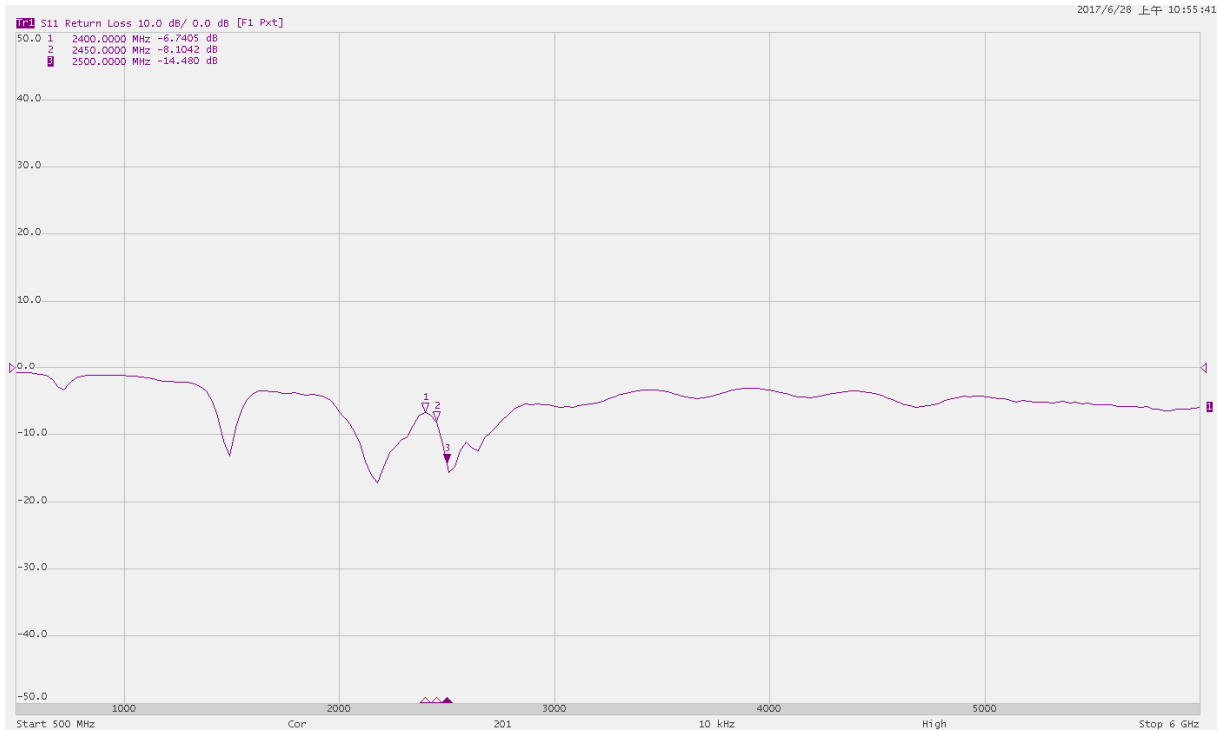
CONNECTOR----- IPEX

PCB----- FR4

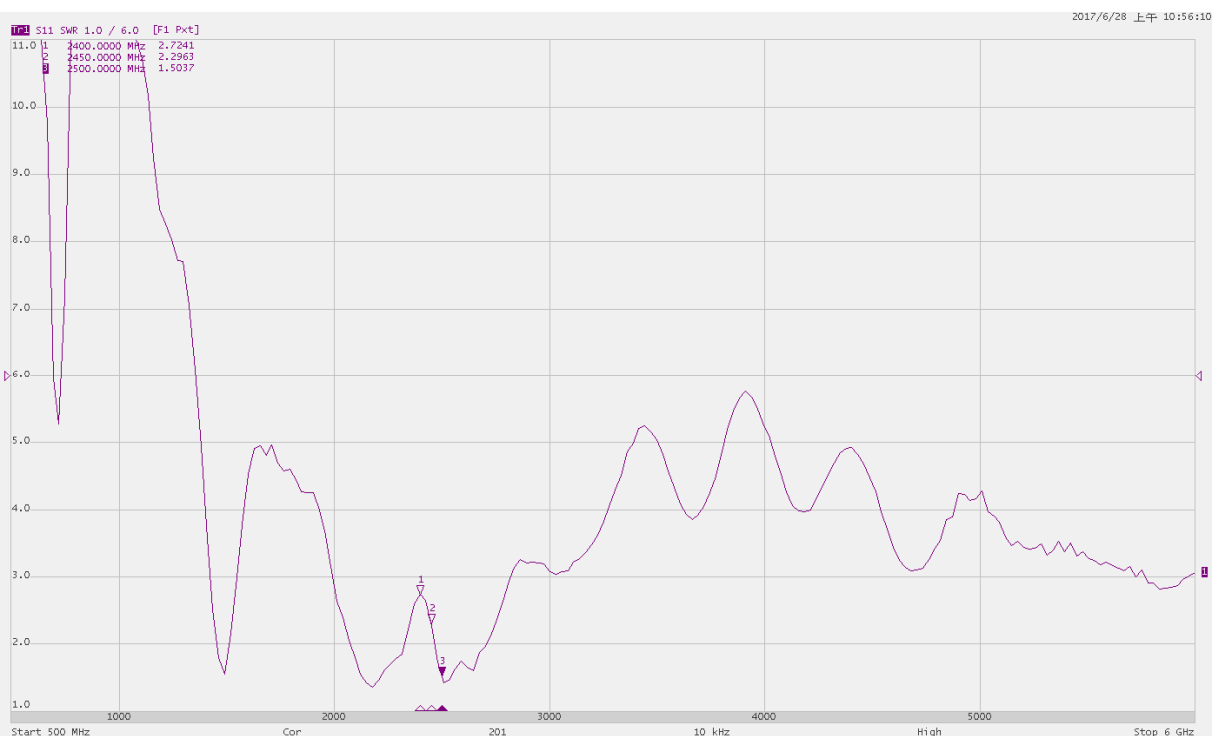
OPERATING TEMPERATURE-----  $-40^{\circ}\text{C} \sim +80^{\circ}\text{C}$

STORAGE TEMPERATURE-----  $-45^{\circ}\text{C} \sim +85^{\circ}\text{C}$

## RETURN LOSS



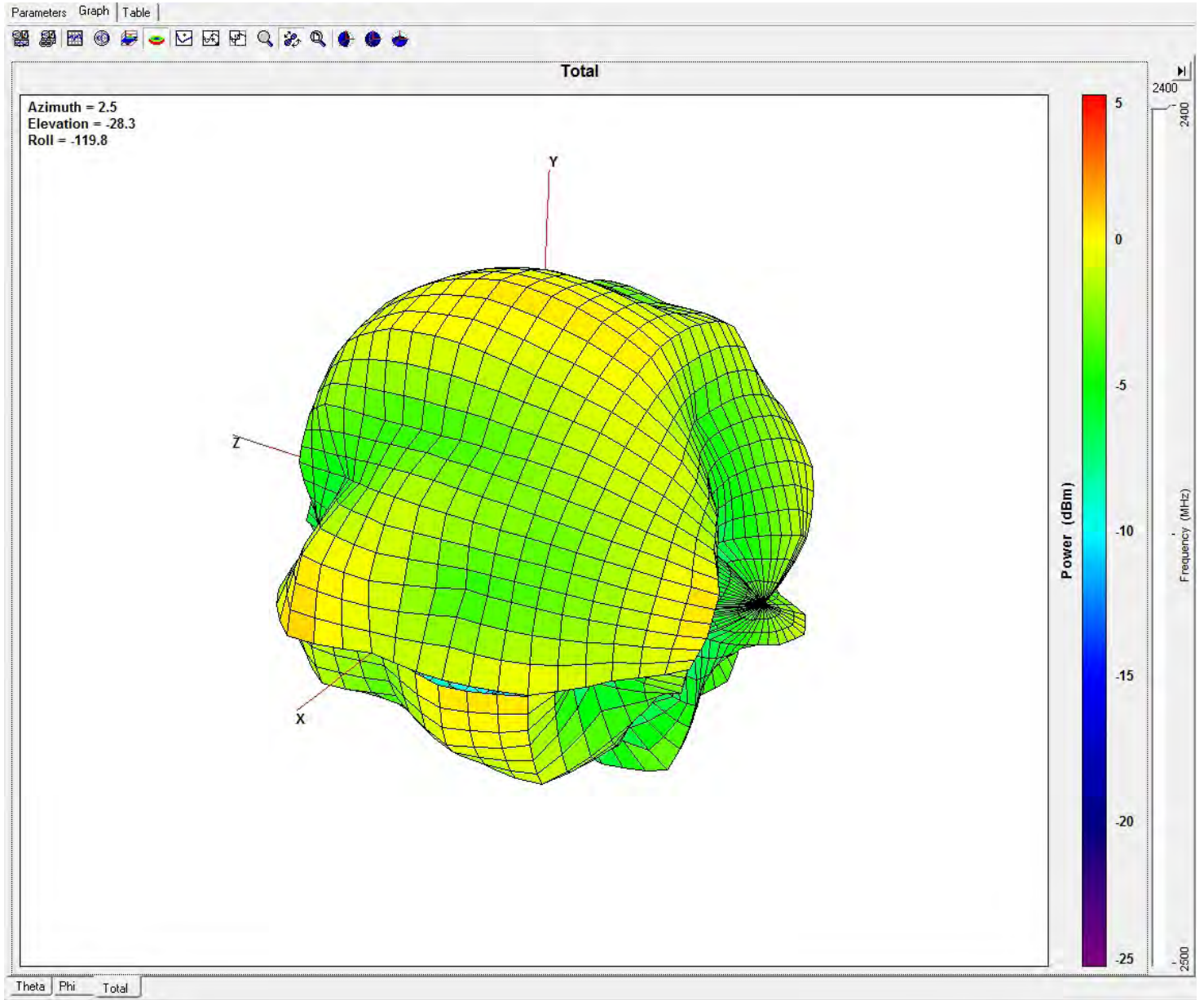
## VSWR



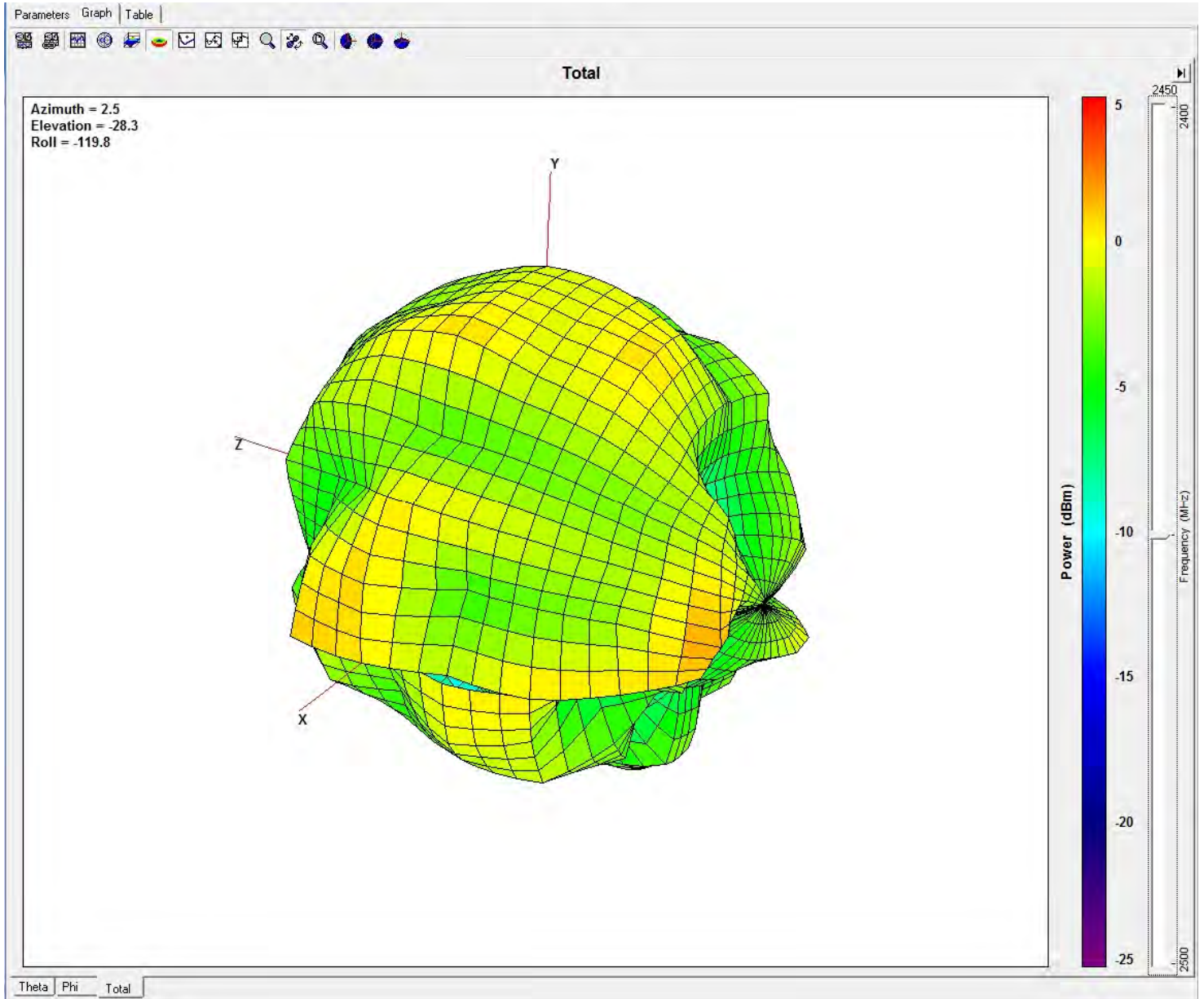
## Chamber

Test Date	2017/6/29		
Channel	2400	2450	2500
Note	CD400U-B		
Ant. Port Input Pwr. (dBm)	0	0	0
Tot. Rad. Pwr. (dBm)	-4.04755	-4.49824	-3.86299
Peak EIRP (dBm)	2.03344	1.53157	2.03658
Directivity (dBi)	6.081	6.02981	5.89957
Efficiency (dB)	-4.04755	-4.49824	-3.86299
Efficiency (%)	39.3772	35.4957	41.0867

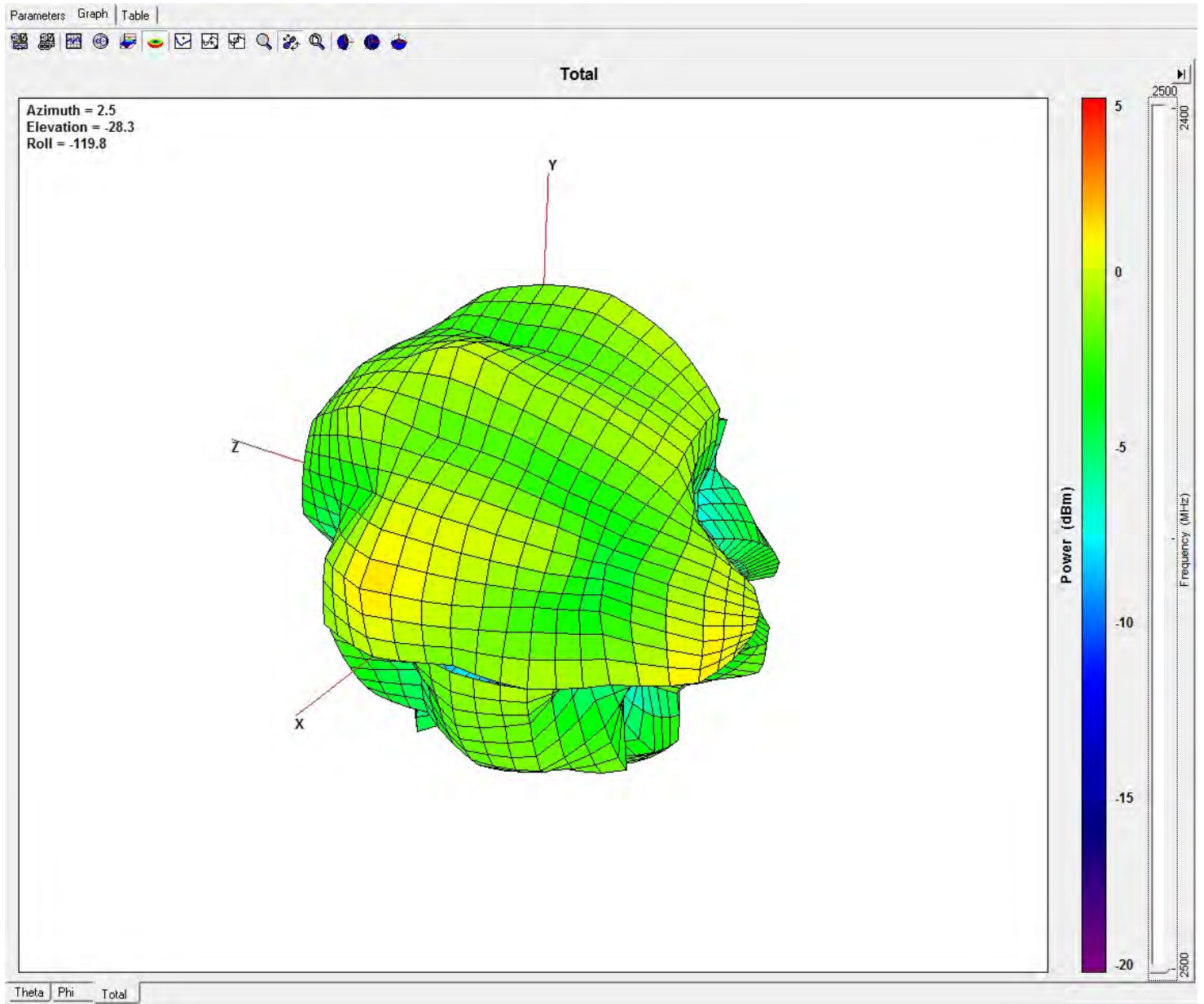
Center freq.(MHz): : 2400



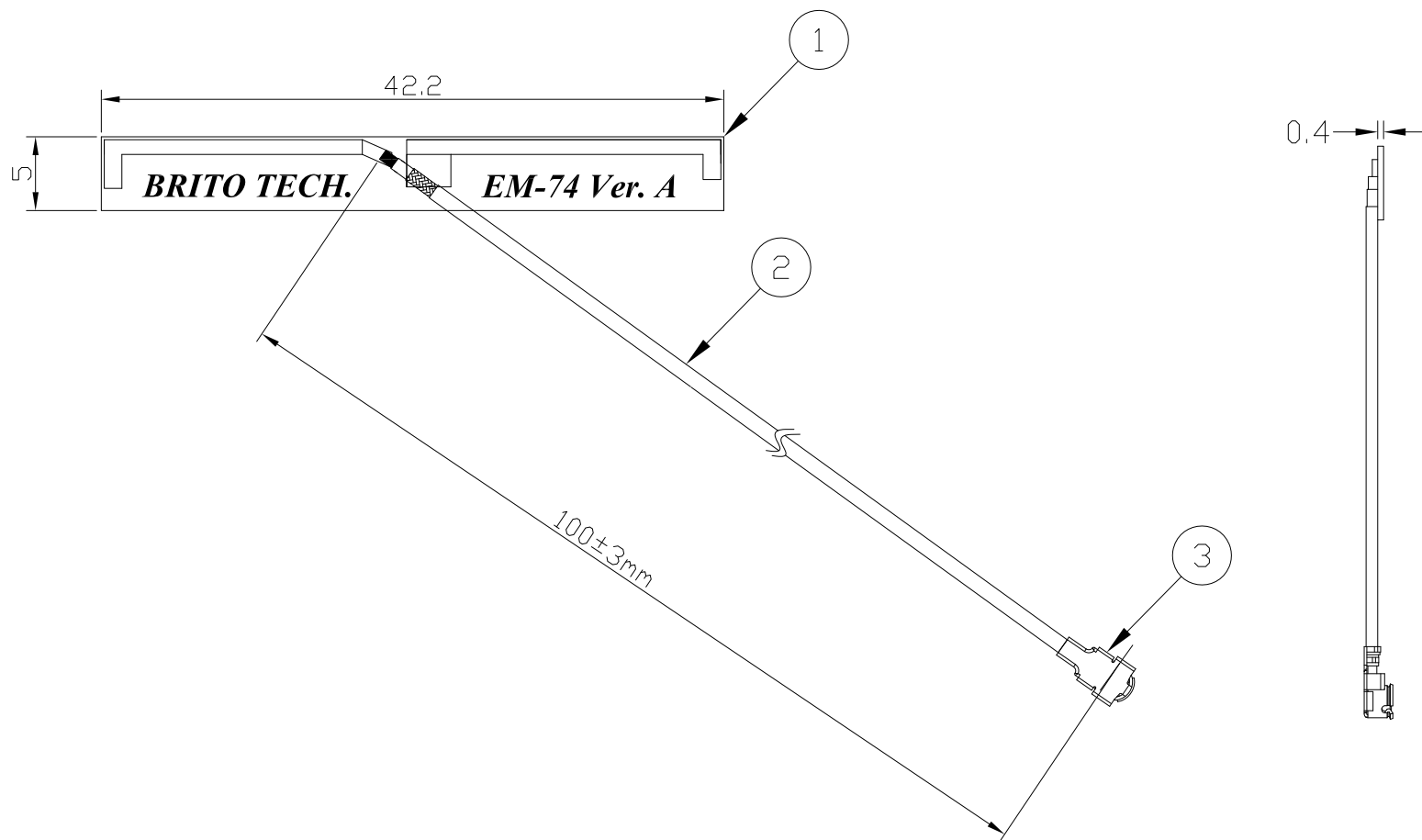
Center freq.(MHz): : 2450



Center freq.(MHz): : 2500



R E V I S I O N S				
REV	DESCRIPTION	LOCATION	DRAWN	DATE
△	圖面新增		ALGER	2017/8/9
△	新增料號		ALGER	2017/8/15



3	N/A	CONNECTOR	IPEX FOR Ø1.13mm	CPN-CA-1708-0455-A	1PCS	N/A
2	N/A	CABLE	Ø1.13mm CABLE BLACK	CPN-CA-1708-0455-A	1PCS	N/A
1	EM74-PCB	PCB	FR-4	CPN-PCB-1510-0211-A	1PCS	N/A
ITEM	PART NO.	PART NAME	MATERIAL	DWG NO.	QTY	REMARKS

RANGE	TOLERANCE	BRITO 昶陽科技有限公司			MODEL NAME	
X.xx	± 0.10				WIFI ANTENNA	
X.x	± 0.15	MATERIAL: SEE TABLE			TITLE: WIFI EMBEDDED ANTENNA	
X	± 0.25				FINISH: WIFI ANTENNA	
 THE 3RD PROJECTION		UNIT: mm	APPROVED: BRUCE	DATE: 2017/8/15	SIZE: A3	PART NO. WF1EM74-I0100
					SCALE : N/A	SHEET 1 OF 1
				DWG NO.	WF-EM-1708-0131-B	REV. B