



REPORT No.: SZ24020075S03

## Annex C Plots of System Performance Check

# RF System Check Test Report

Measurement performed on June 17, 2024 at 09:04

## Device Under Test

Manufacturer	Model	Dimensions [mm]	Speaker Position [mm]
		146.2 x 71.8 x 7.5	144.3

## Hardware Setup

Probe Name	Probe Calibration Date	DAE Name	DAE Calibration Date
ER3DV6 - SN2434	February 17, 2024	DAE4 Sn480	September 19, 2023

## Communication Systems

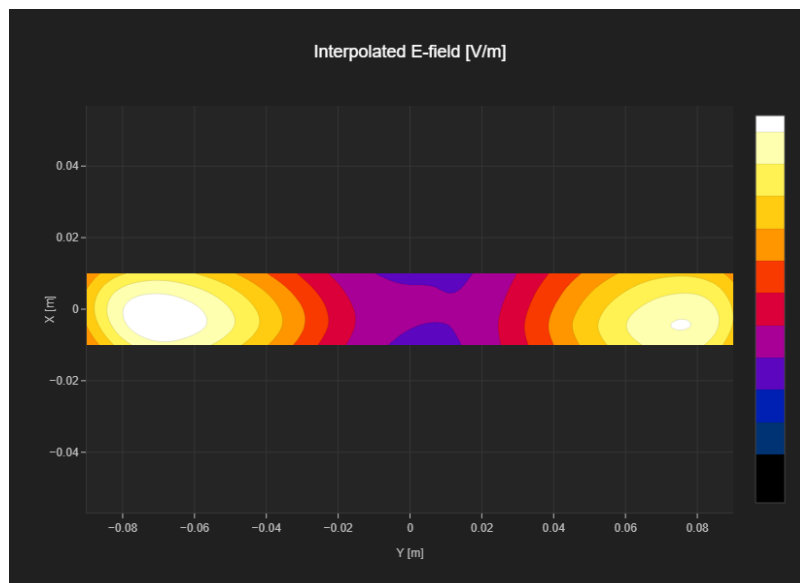
Band Name	Communication Systems Name	Channel	Frequency [MHz]
CD835	CW	50	835.0

## Grid Settings

Extent X [mm]	Extent Y [mm]	Step X [mm]	Step Y [mm]	Distance [mm]
20.0	180.0	5.0	5.0	15.0

## Results

Dipole Type	Dipole Serial Number	E <sub>max</sub> [V/m]	Drift [dB]
CD835	XXXX	102	-0.08



# RF System Check Test Report

Measurement performed on June 17, 2024 at 10:08

## Device Under Test

Manufacturer	Model	Dimensions [mm]	Speaker Position [mm]
		146.2 x 71.8 x 7.5	144.3

## Hardware Setup

Probe Name	Probe Calibration Date	DAE Name	DAE Calibration Date
ER3DV6 - SN2434	February 17, 2024	DAE4 Sn480	September 19, 2023

## Communication Systems

Band Name	Communication Systems Name	Channel	Frequency [MHz]
CD1880	CW	50	1880.0

## Grid Settings

Extent X [mm]	Extent Y [mm]	Step X [mm]	Step Y [mm]	Distance [mm]
20.0	90.0	5.0	5.0	15.0

## Results

Dipole Type	Dipole Serial Number	E <sub>max</sub> [V/m]	Drift [dB]
CD1880	XXXX	83.2	-0.12

