

UW538 Antenna Report

catalogue

1. Capability Status
2. Antenna Passive Efficiency
3. Simple Antenna Pattern Plot
4. Model number of the antenna
5. Antenna Type
6. Antenna return loss

1. Capability Status

a. Main software and hardware facilities for antenna Etheta

Equipment introduction

Shanghai: Satimo:1 GTS2800:1

A-plus:1

Shenzhen: Satimo:2 GTS2800:1 Dasy6:1

Airlink 1 NFC-Micro Pross CTS 3.0:1

Test software :GTS

Xian: GTS2800:1

Beijing: GTS1800:1

Chongqing: GTS2800:1

b. Full category testing capability

Support system

GSM/WCDMA/EVDO/TDSCDMA/TDD/FDD/5G-SA/5G-NSA/eMTC/NB-iot/GPS/WiFi
(WiFi 6/6E) /BT/CA/ENDC

Common equipment

Anritsu MT8000A

Anritsu MT8821C

5071C

CMW500

Anritsu MT8820

DASY4 SAR

Calibration Date: 2024/03/13

Due Date: 2025/03/12

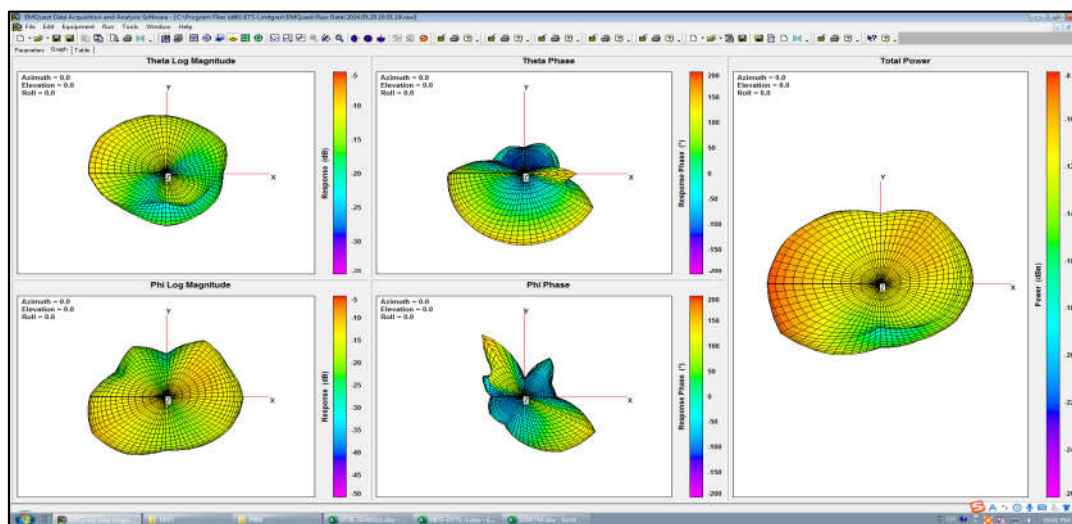
Manufacturer: Etheta Communication Technology (Shenzhen) CO.,Ltd

Headquarter ADD:Area B,Floor 3,Building 1,Baisha Technology Industrial Park,Shahe
West Road,Nanshan District, Shenzhen

2. Antenna Passive Efficiency

Test / Position	Free Space				
bands	Frequency	TX Antenna Peak Gain			
		Ant 1	Ant 2	Ant 3	Ant 4
WiFi 2.4G	2400-2483.5MHz	-1.5			

3. Simple Antenna Pattern Plot



BT/2.4G WiFi

4. Model number of the antenna

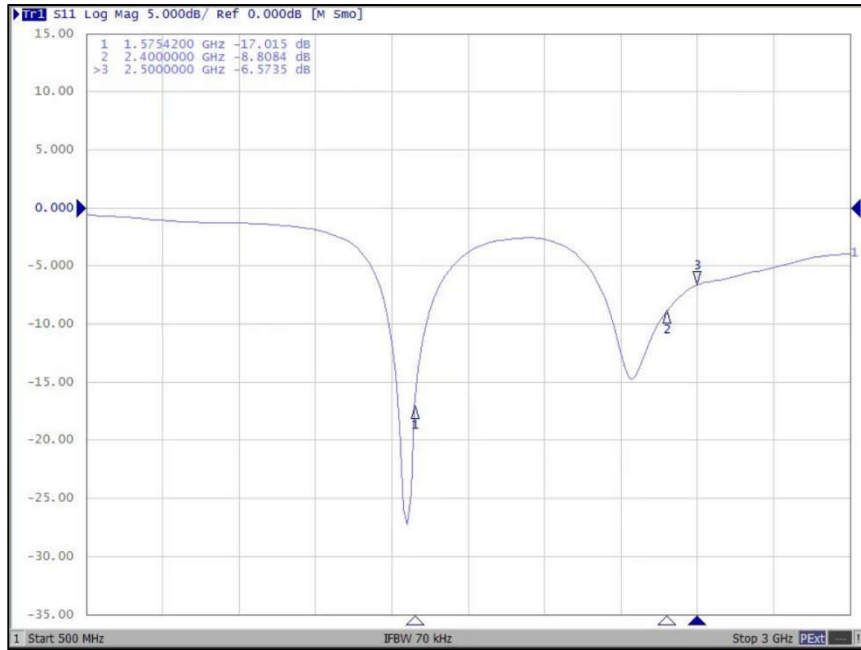
RD-XXXX-V. 03

5. Antenna Type

LDS

6. Antenna return loss

GPS&WIFI Antenna



The Antenna is tested individually, but it serves the UW538 model

Thank You !

蒋懿辰

Approved By : 蒋懿辰