

Report No.: SEWM2304000111RG010

Rev.: 01

Page: 1 of 4

Appendix D

Photographs

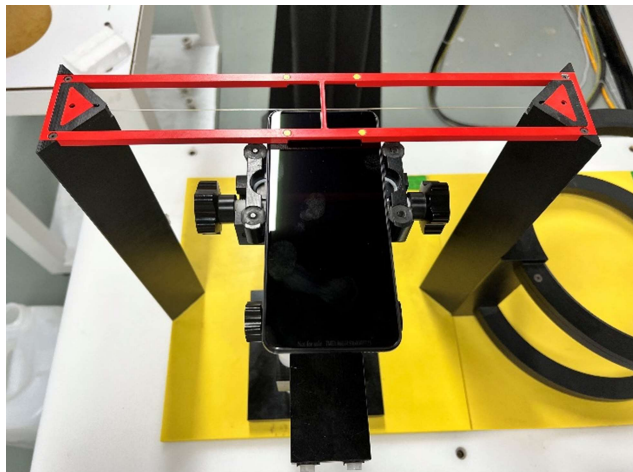
- | |
|-------------------------------------|
| 1. SAR measurement System |
| 2. Photographs of EUT test position |
| 3. EUT Constructional Details |

1 HAC measurement System

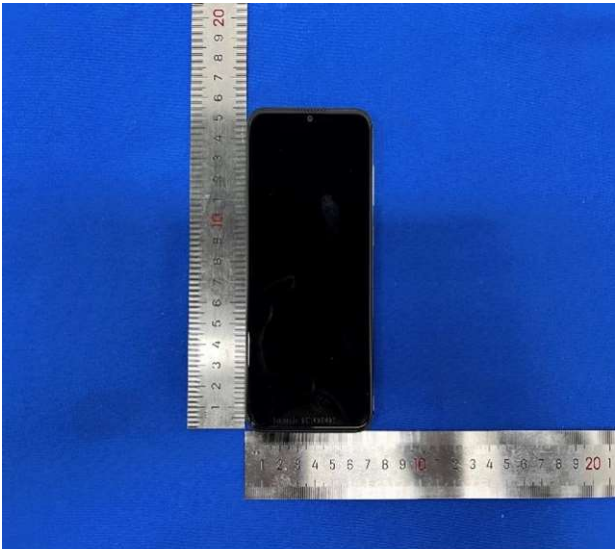
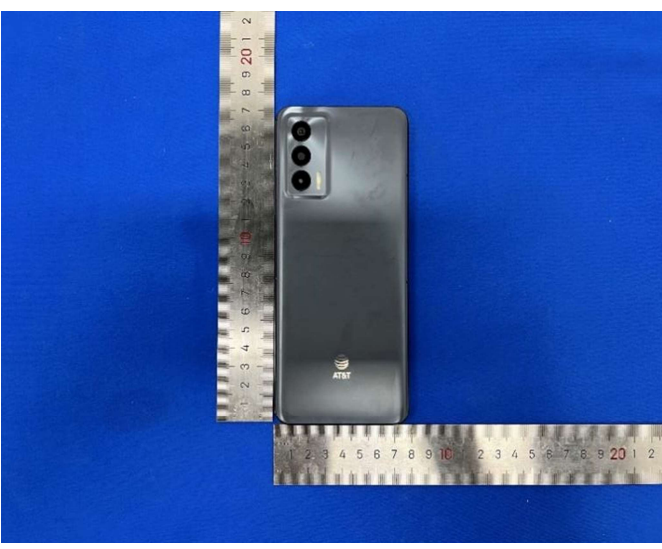


2 Photographs of Test Setup

Photo 1: Receiver of mobile contact center of Arch



3 EUT Constructional Details

Photo 2: Front View	Photo 3: Back View
 A photograph showing the front view of a black smartphone. The phone is centered vertically and horizontally against a blue background. A vertical ruler is placed to the left of the phone, and a horizontal ruler is placed below it. The vertical ruler shows the phone's height is approximately 15.5 cm. The horizontal ruler shows the phone's width is approximately 7.5 cm.	 A photograph showing the back view of a black smartphone. The phone is centered vertically and horizontally against a blue background. A vertical ruler is placed to the left of the phone, and a horizontal ruler is placed below it. The vertical ruler shows the phone's height is approximately 15.5 cm. The horizontal ruler shows the phone's width is approximately 7.5 cm. The back of the phone features a camera module with three lenses and an AT&T logo.