

---

# **Antenna Data Sheet**

## **Catalogue**

- 1. Capability Status**
- 2. Antenna Location**
- 3. Antenna Passive Efficiency**
- 4. Simple Antenna Pattern Plot**
- 5. Antenna return loss**

---

## 1. Capability Status

### a. Main software and hardware facilities for antenna R&X

#### Equipment introduction

Shanghai: Satimo:2 GTS1800:3 NFC Micropross:1

SAR DASY 5:1

Shenzhen: GTS1800:1 GTS2800:1 NFC Micropross:1

Xian: GTS2800:1

Beijing: GTS1800:2 GTS2800:1

Kunshan: GTS2800:1 Satimo:2 GTS1800:3

SAR DASY 4:2



Satimo SG24



GTS2800



---

DASY4/5

NFC

b. Full category testing capability

Support system

GSM/WCDMA/EVDO/TDSCDMA/TDD/FDD/5G-SA/5G-NSA/eMTC/NB-  
iot/GPS/WiFi/BT/CA/ENDC

Common equipment

SP9500

Anritsu MT8820C

5071C

CMW500

DASY4/5 SAR

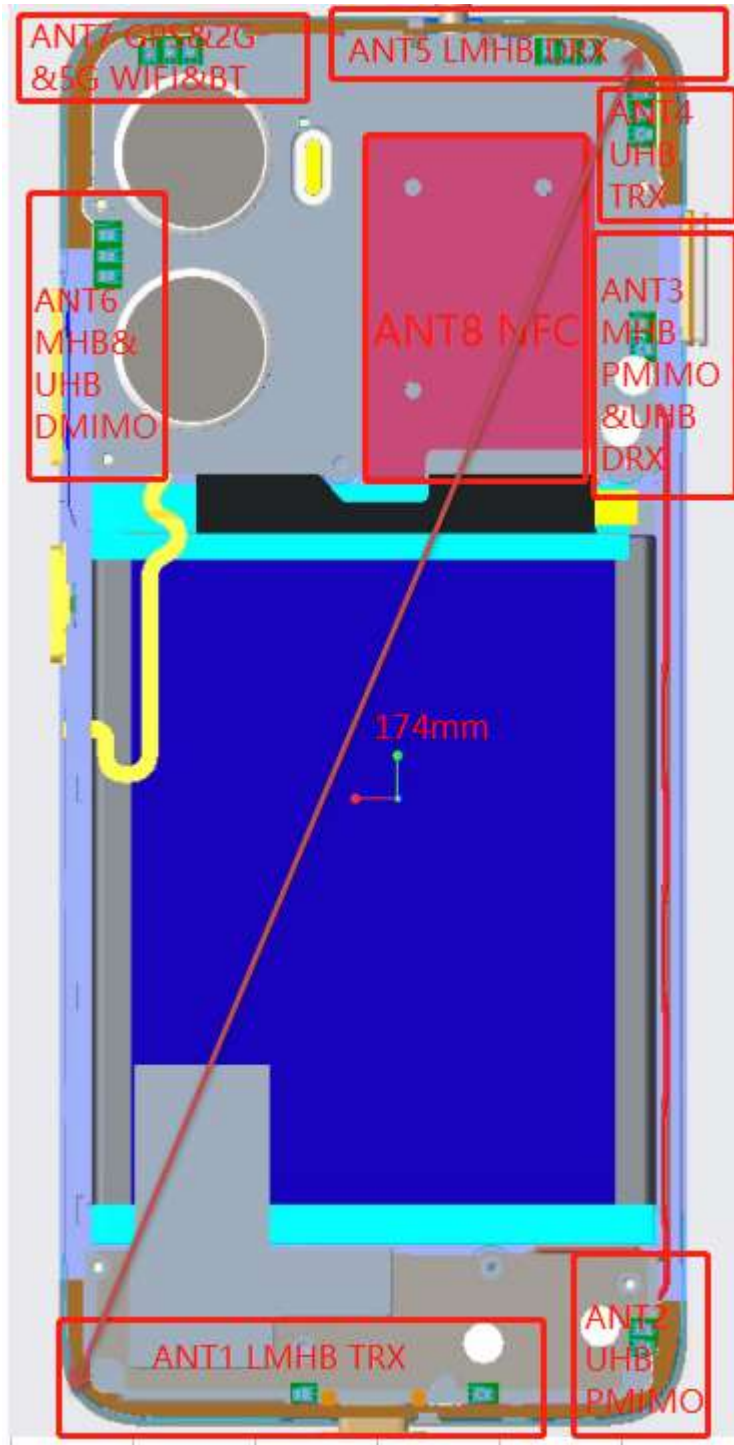


**StarPoint SP9500**

**Anritsu MT8820C**

## 2. Antenna Location

ANT1&ANT5 supports UL CA and ENDC.



---

**ANT1:**

**TX(ENDC/UL CA): WCDMA:B1 B2 B4 B5 B8**

**LTE: B2 B3 B4 B5 B7 B12 B14 B20 B30 B66**

**NR: N2 N5 N30 N66**

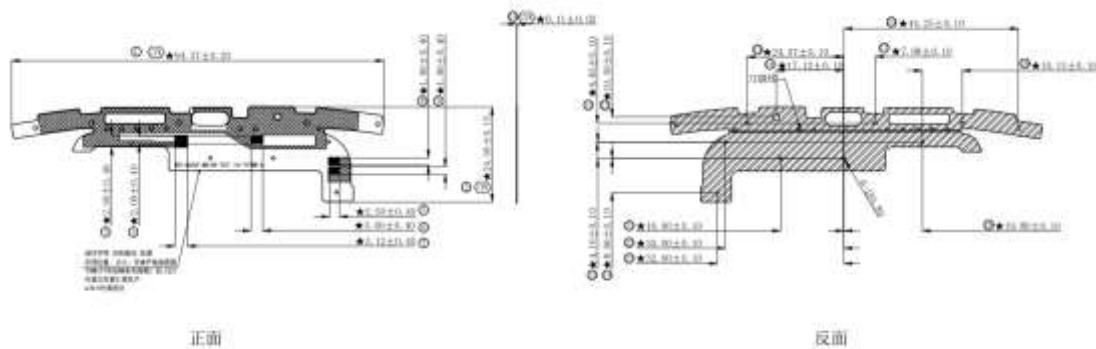
**PRX: WCDMA:B1 B2 B4 B5 B8**

**LTE: B2 B3 B4 B5 B7 B12 B14 B20 B29 B30 B66**

**NR:N2 N5 N30 N66**

**ANT2:**

**RX: NR: N77**



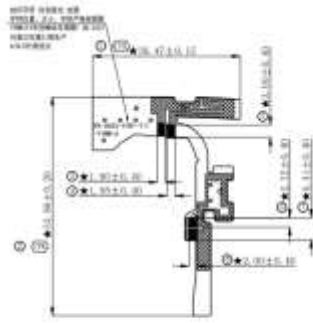
**ANT6:**

**RX(DM): LTE:B2 B4 B30 B66**

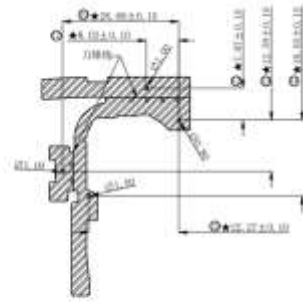
**NR: N2 N30 N66 N77**

**ANT7:**

**WIFI2.4G&5G / BT / GPS L1**



正面



反面

ANT1/2 Model:U655AA\_MAIN

ANT6/7 Model:U655AA\_4IN1

ANT1/2/6/7 Model:U655AA\_MAIN

Kunshan Innwave Communication Technology Co., Ltd.

www.innowave.cn

Tel: 86-0512-57258326

Fax: 86-0755-21633856

Address: Building H, No.55 Shengchuang Road, Kunshan

**ANT3:**

**RX(PM): LTE:B2 B4 B30 B66**

**NR: N2 N30 N66 N77**

**ANT4:**

**TX: NR:N77**

**PRX: NR:N77**

**ANT5:**

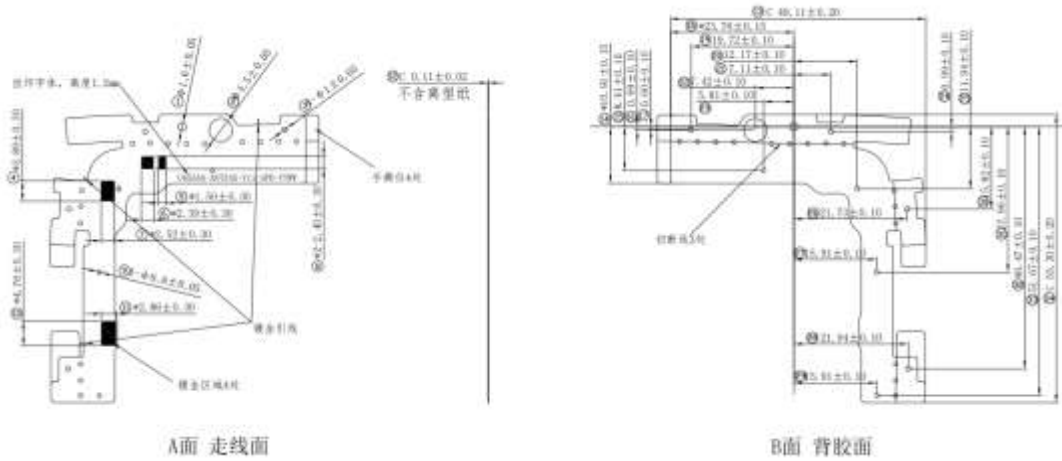
**TX(ENDC/UL CA): LTE: B2 B12 B30 B66**

**NR: N2 N66**

**DRX: WCDMA:B1 B2 B4 B5 B8**

LTE: B2 B3 B4 B5 B7 B12 B14 B20 B29 B30 B66

NR:N2 N5 N30 N66



Model:U655AA\_ANT345

ANT3/4/5 Vendor:

Huizhou Speed Wireless Technology Co.,Ltd.

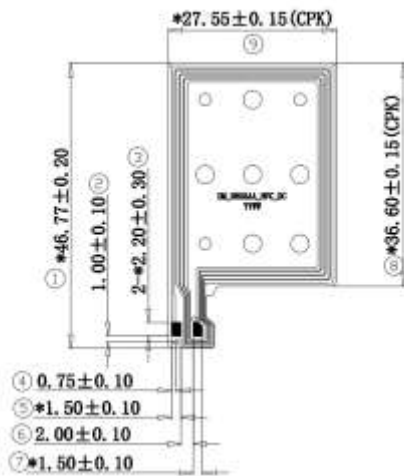
[www.speed-hz.com](http://www.speed-hz.com)

Tel: 0752-2836333

FAX:0752-2836333

Address: No.SX-01-02Shangxia Section,Hi-tech District of East-river,Huizhou,Guangdong Province P.R,China

## ANT8: NFC



Model:U655AA\_NFC

The devices does not support the test of NFC gain.In addition,all measurements were performed radiated.

ANT8 Vendor

Shanghai Demen Electronic Technology Co., Ltd

[www.deman-china.com](http://www.deman-china.com)

Tel: 86-21-64909006

Fax: 86-21-64909812

Address:No.58, Shenxue Road, Xinzhuang Industrial Park, Minhang District, Shanghai

### 3. **Antenna Passive Efficiency**

#### Ant1

	Average Gain	Maximum Gain
WCDMA B1	-5.8dBi	-2.3dBi
WCDMA B2	-5.3dBi	-3dBi



---

WCDMA B4	-5.3dBi	-0.6dBi
WCDMA B5	-7dBi	-3.6dBi
WCDMA B8	-6.5dBi	-2.4dBi
LTE B2	-5.3dBi	-3dBi
LTE B3	-5.3dBi	-0.6dBi
LTE B4	-5.3dBi	-0.6dBi
LTE B5	-7dBi	-3.6dBi
LTE B7	-9.7dBi	-6.1dBi
LTE B12	-6dBi	-3dBi
LTE B14	-6.5dBi	-3.6dBi
LTE B20	-7dBi	-3.6dBi
LTE B29	-6dBi	-3dBi
LTE B30	-6dBi	-0.5dBi
LTE B66	-5.3dBi	-0.6dBi
N2	-5.3dBi	-3dBi
N5	-7dBi	-3.6dBi
N30	-6dBi	-0.5dBi
N66	-5.3dBi	-0.6dBi

### **Ant2**

N77	-7.1dBi	-0.6dBi
-----	---------	---------

### **Ant3**

LTE B2	-11.8dBi	-6.2dBi
LTE B4	-12.5dBi	-6.2dBi
LTE B30	-13.0dBi	-5.7dBi

---

LTE B66	-12.5dBi	-6.2dBi
N2	-11.8dBi	-6.2dBi
N30	-13.0dBi	-5.7dBi
N66	-12.5dBi	-6.2dBi
N77	-10.1dBi	-4.5dBi

### Ant4

N77	-5.9dBi	0.6dBi
-----	---------	--------

### Ant5

WCDMA B1	-6.4dBi	-2.3dBi
WCDMA B2	-5.3dBi	-2.9dBi
WCDMA B4	-6.4dBi	-2.3dBi
WCDMA B5	-11.1dBi	-7.2dBi
WCDMA B8	-11.2dBi	-7.4dBi
LTE B2	-5.3dBi	-2.9dBi
LTE B3	-6.4dBi	-2.3dBi
LTE B4	-6.4dBi	-2.3dBi
LTE B5	-11.1dBi	-7.2dBi
LTE B7	-8.1dBi	-1.3dBi
LTE B12	-13.1dBi	-10.2dBi
LTE B14	-12.2dBi	-9.0dBi
LTE B20	-12.3dBi	-9.0dBi
LTE B29	-12.5dBi	-9.3dBi

---

LTE B30	-5.0dBi	0.4dBi
LTE B66	-6.4dBi	-2.3dBi
N2	-5.3dBi	-2.9dBi
N5	-11.1dBi	-7.2dBi
N30	-5.0dBi	0.4dBi
N66	-6.8dBi	-3.6dBi

TX(ENDC)

LTE B2	-5.3dBi	-2.9dBi
LTE B12	-13.1dBi	-10.2dBi
LTE B30	-5.0dBi	0.4dBi
LTE B66	-6.8dBi	-3.6dBi
N2	-5.3dBi	-2.9dBi
N66	-6.8dBi	-3.6dBi

**Ant6**

LTE B2	-10.0dBi	-4.6dBi
LTE B4	-7.1dBi	-1dBi
LTE B30	-8.7dBi	-2.2dBi
LTE B66	-7.1dBi	-1dBi
N2	-10.0dBi	-4.6dBi
N30	-8.7dBi	-2.2dBi
N66	-7.1dBi	-1dBi
N77	-9.0dBi	-5.3dBi

---

## Ant7

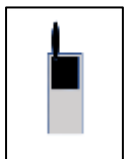
GPS	-4.9dBi	0.6dBi
WIFI 2.4G	-5.5dBi	1.35dBi
WIFI 5G	-5.3dBi	-0.1dBi
BT	-5.5dBi	1.35dBi

## ANT8 NFC

The devices does not support the test of NFC gain. In addition, all measurements were performed radiated .

## 4. Simple Antenna Pattern Plot

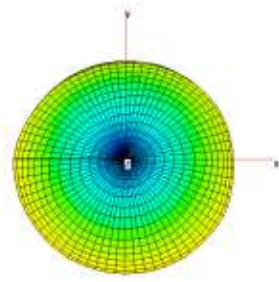
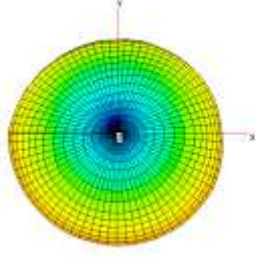
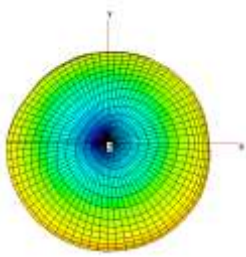
a. Antenna1



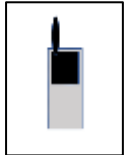
B2/3/4/7/66/5/20

B14

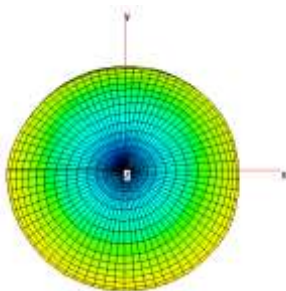
B12/29



b. Antenna2

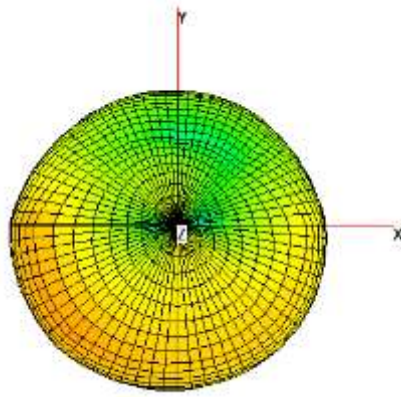


N77

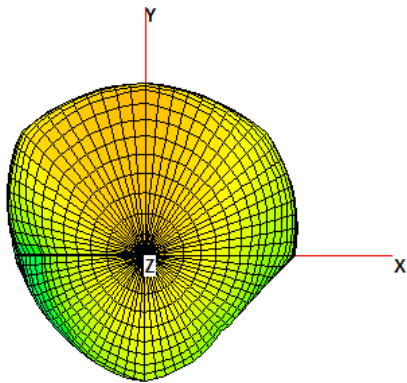
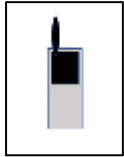


c. Antenna3

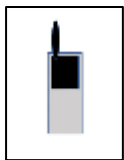




d.Antenna4



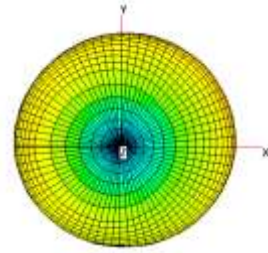
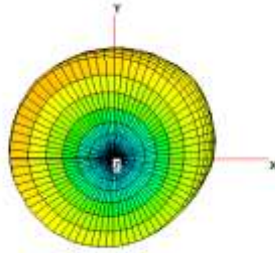
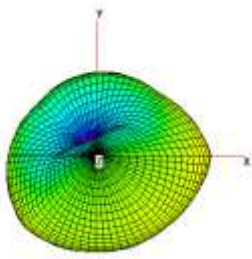
e.Antenna5



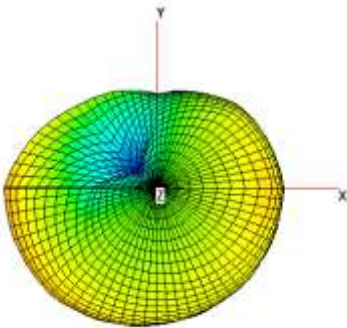
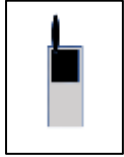
B2/3/4/7/66/5/20

B14

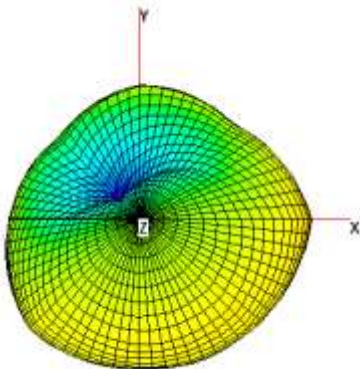
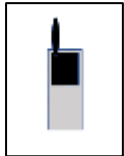
B12/29



f. Antenna6

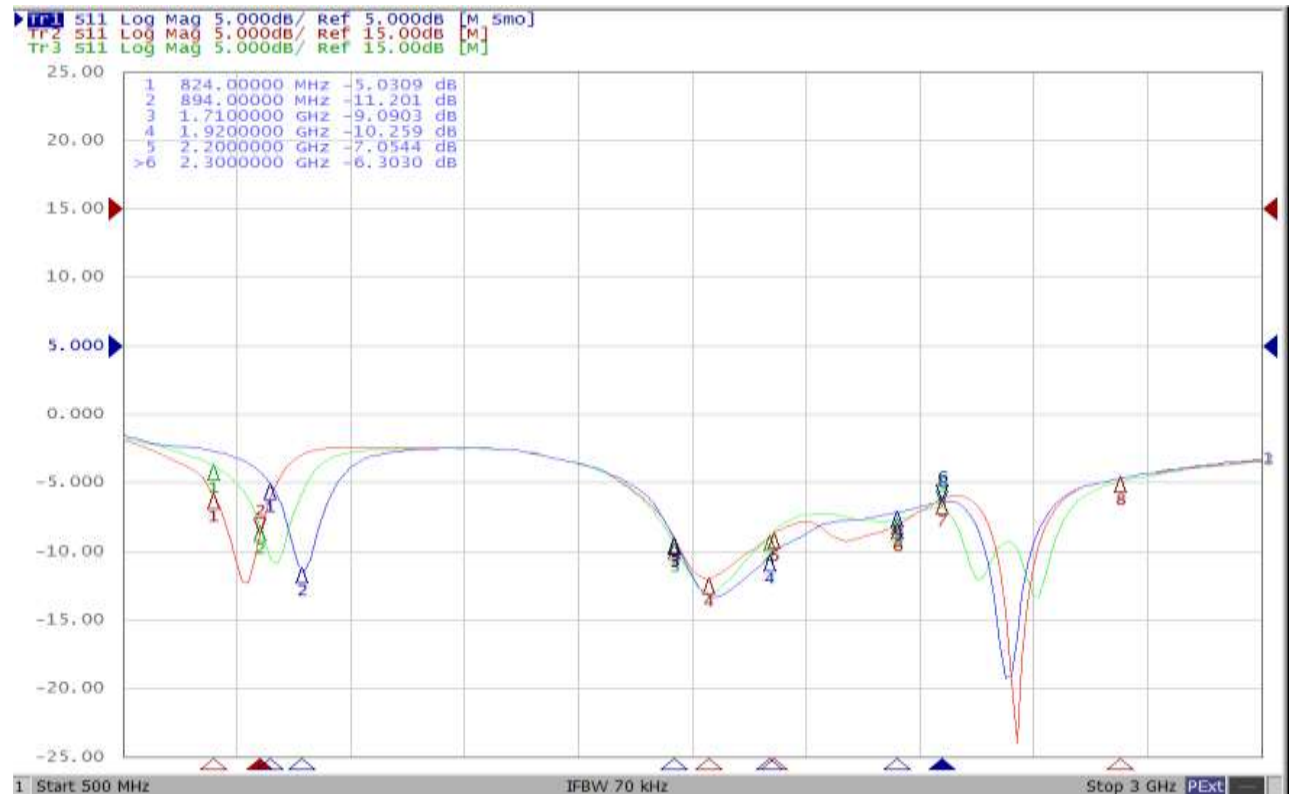


g. Antenna7



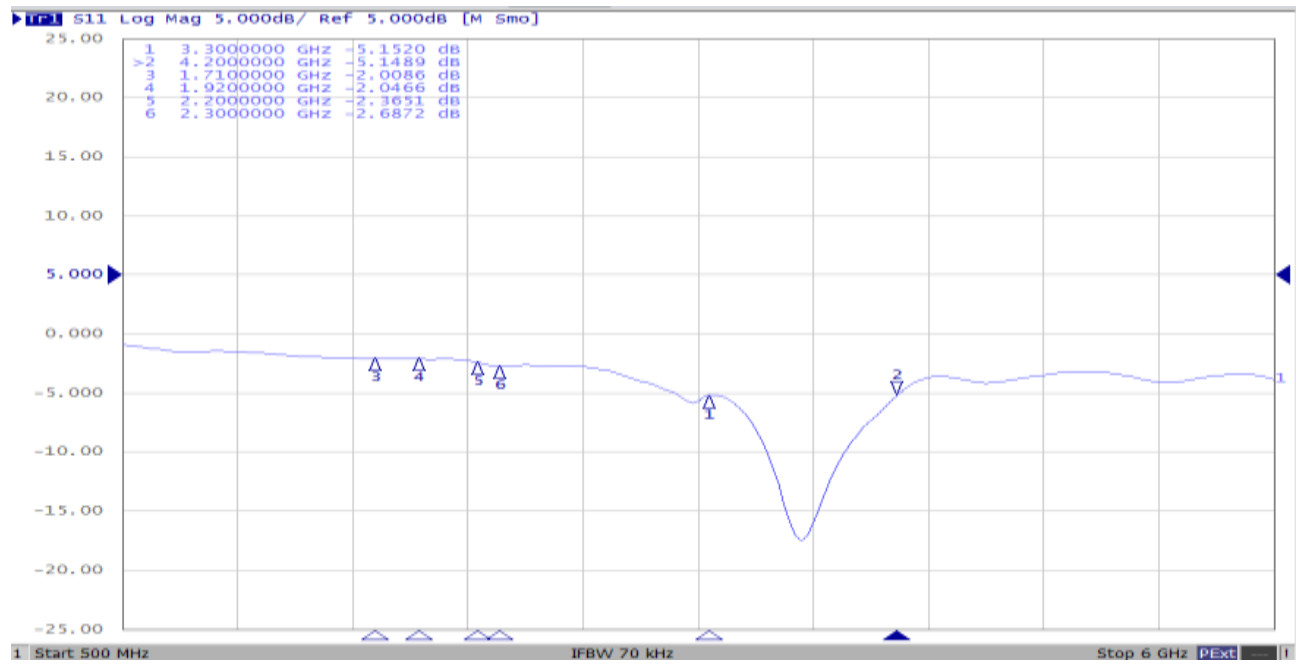
## 4. Antenna return loss

Antenna1



Antenna2

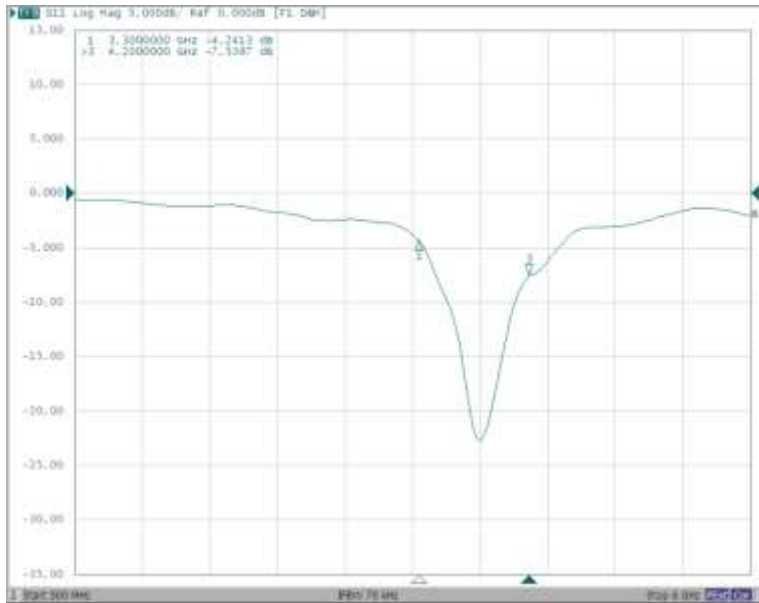




Antenna3



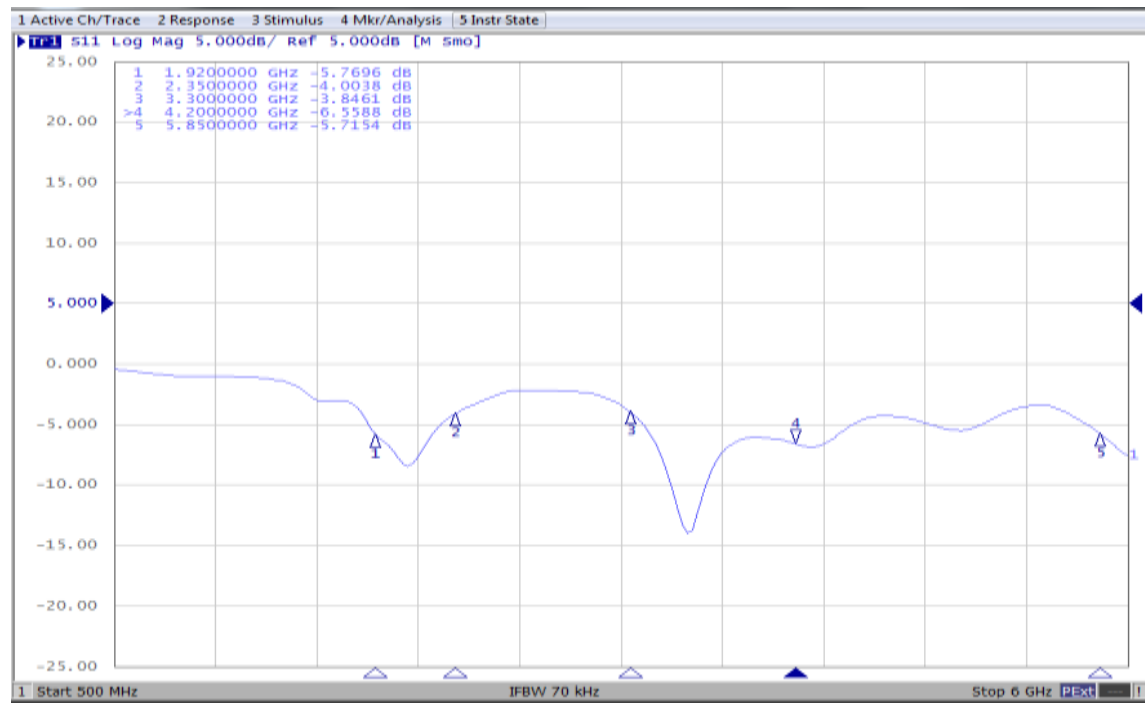
Antenna4



Antenna5



Antenna6



## Antenna7

