

Report No.: SEWM2304000115RG02

Rev.: 01

Page: 1 of 4

Appendix C

Photographs

- | |
|-------------------------------------|
| 1. SAR measurement System |
| 2. Photographs of EUT test position |
| 3. EUT Constructional Details |

Report No.: SEWM2304000115RG02

Rev.: 01

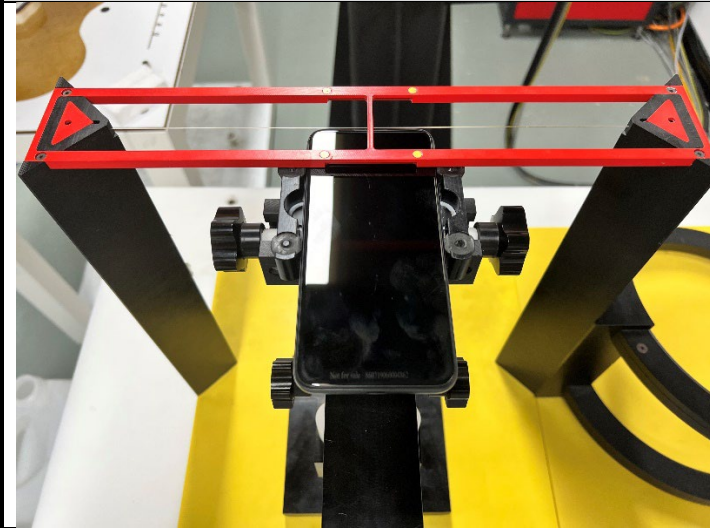
Page: 2 of 4

1 HAC measurement System





2 Photographs of Test Setup

Photo 1: Receiver of mobile contact center of Arch



3 EUT Constructional Details

Photo 2: Front View	Photo 3: Back View
 A photograph showing the front view of a black smartphone. The phone is centered on a blue fabric background. A metal ruler is placed vertically to the left of the phone, and another metal ruler is placed horizontally below the phone. The vertical ruler shows the phone's height is approximately 15.5 cm. The horizontal ruler shows the phone's width is approximately 7.5 cm.	 A photograph showing the back view of a black smartphone. The phone is centered on a blue fabric background. A metal ruler is placed vertically to the left of the phone, and another metal ruler is placed horizontally below the phone. The vertical ruler shows the phone's height is approximately 15.5 cm. The horizontal ruler shows the phone's width is approximately 7.5 cm. The back of the phone features a triple-camera system in the top left corner and the AT&T logo at the bottom center.