

45m m

HONOR CHOICE

Tinno Smart Stylus Quick Start Guide

टिननो स्मार्ट स्टाइलस
तुरत प्रारम्भ नरिदेशिका
الذكي Tinno قلم
دليل التشغيل السريع

Tinno Smart Stylus Panduan Mula Pantas

小瓏智聯手寫筆
快速入門指南

"Умный" стилус Tinno Краткое руководство по началу работы

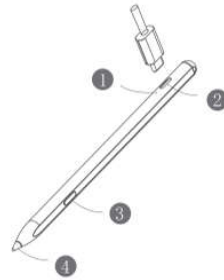
Tinno Akıllı Stylus
Hızlı Başlangıç Kılavuzu

Жылдам бастау
нұсқаулығы

Tinno Smart Stylus Guia de início rápido Estilógrafo Inteligente Tinno Guía de Inicio Rápido

Please read this User Manual carefully
before use and keep it in a safe place.

Appearance



1	Indicator light	2	USB port
3	Button	4	Nib

1. Double-clicking the button allows you to switch between the eraser and pen modes.
2. In sleep mode, a single click on the button will wake it up. If a pairing record is made, it will automatically reconnect after waking up.

English

Pairing and Charging

The first time you use the stylus, please pair it with the tablet:
1. Connect the charging cable for charging activation.
2. Hold the stylus close to the tablet (make sure the Bluetooth switch of the tablet is turned on), and press and hold the stylus button until the indicator light flashes and the stylus enters the pairing state, and then pair the stylus with the tablet according to the on-screen pop-up prompts on the tablet.

Bluetooth Name: HONOR CHOICE Pencil

Notes:

1. The stylus will enter a deep sleep state after a period of inactivity, and it needs to be awakened by pressing a button before it can be used again.
2. If the stylus is left unused for a long time, the battery will slowly drain until it enters the battery protection state. At this point, the stylus needs to be charged for 5-10 minutes before it can be used.

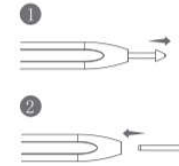


The HONOR CHOICE Pencil is compatible with the Honor Tablet 9.
More tablet models will be gradually added to the compatible list in the future, please look forward to it.

English

Replace the Nib

1. The nib may wear out over regular writing, and writing on a rough screen protector will accelerate the wear. It is recommended to purchase the nib through the official Honor channels.
2. Please handle the stylus with care to prevent the nib from falling off and getting damaged.



1. Hold the nib with one finger, and grip the body of the stylus with the other hand. Pull the nib vertically back with appropriate force until it separates from the tube.
2. Hold the head of the new nib with one finger, and insert the tail of the nib straight into the center of the nib hole. Push the nib in with appropriate force until it is fully seated inside. After the nib is pushed all the way in, please check if the installed nib is crooked or loose, to prevent the nib from falling off.

English

Safety Information

Before using and operating the device, please read and comply with the following precautions to ensure optimal device performance and to avoid dangerous or illegal situations.

- To avoid interference from radio waves, please keep at least 15 centimeters away from implanted medical devices or personal medical devices (such as pacemakers, implanted cochleas, hearing aids, etc.) when the device is in use, and consult with its manufacturer for the limitations of this device.

Please make use of this device within a temperature range of 0° C to 35° C, and store the device and its accessories within a temperature range of -20° C to +45° C. Device failure may occur when the ambient temperature is too high or too low.


- This device and its accessories may contain some small parts, please place the device and its accessories in a location inaccessible to children. Children may inadvertently damage the device and its accessories, or swallow small parts leading to choking or other hazards.

- Please avoid exposing the device and its accessories to rain or moisture, which may cause fire or electrical shock hazards.

- Do not place the device and its accessories in areas with too high temperature (such as heat sources, exposed flames) or too low temperature, which may cause device failure, fire or explosion.

English

90m m

<div>Safety Information</div> <div><div></div><div><ul style="list-style-type: none">● Do not disassemble, drop, hit, squeeze or modify the batteries; do not insert foreign objects, or puncture the batteries; do not immerse the batteries in water or other liquids; do not place the batteries in a high-temperature environment to avoid internal short-circuit, overheating, liquid leakage, fire or explosion.● Do not arbitrarily disassemble, modify the device (including replacing the built-in battery) and its accessories, otherwise the device and its accessories will not be covered by our company's warranty, and please contact the official customer service center in case of device failure.● Using unauthorized or incompatible power supplies, chargers or batteries may cause fire, explosion or other hazards.● Please comply with the local laws and regulations for handling this device and its accessories, and support recycling efforts.● Please handle this device, batteries, and other accessories in accordance with local regulations and do not dispose of them as domestic waste. Improper disposal of batteries may cause battery explosions.</div><div>Hereby, Shenzhen Tinno Mobile Technology Corp. declares that the radio equipment type MAL-HP000 is in compliance with Directive 2014/53/EU. The full text of the EU declaration of conformity is available at the following internet address: https://en.tinno.com/eu-doc/ *EIRP power: 5.50 dBm</div></div> <div>English</div>	<div>FCC Regulations:</div> <div><div>This device complies with part 15 of the FCC Rules. Operation is subject to the following two conditions: (1) This device may not cause harmful interference, and (2) this device must accept any interference received, including interference that may cause undesired operation.</div><div>This device has been tested and found to comply with the limits for a Class B digital device, pursuant to Part 15 of the FCC Rules. These limits are designed to provide reasonable protection against harmful interference in a residential installation. This equipment generates, uses and can radiated radio frequency energy and, if not installed and used in accordance with the instructions, may cause harmful interference to radio communications. However, there is no guarantee that interference will not occur in a particular installation. If this equipment does cause harmful interference to radio or television reception, which can be determined by turning the equipment off and on, the user is encouraged to try to correct the interference by one or more of the following measures: -Reorient or relocate the receiving antenna. -Increase the separation between the equipment and receiver. -Connect the equipment into an outlet on a circuit different from that to which the receiver is connected. -Consult the dealer or an experienced radio/TV technician for help.</div><div>Caution: Changes or modifications not expressly approved by the party responsible for compliance could void the user 's authority to operate the equipment.</div></div> <div>RF Exposure Information</div> <div><div>This device meets the government' s requirements for exposure to radio waves.</div><div>This device is designed and manufactured not to exceed the emission limits for exposure to radio frequency (RF) energy set by the Federal Communications Commission of the U.S. Government.</div><div>● This device complies with FCC radiation exposure limits set forth for an uncontrolled environment.</div></div> <div>English</div>	<div>Service Policy</div> <div><div>I. Where the product experiences a performance failure due to non-human damage during the normal use of the product, the consumer may enjoy free maintenance services for 12 months from the date of purchase within the warranty period.</div><div>II. The consumer may not enjoy the warranty rights under any of the following circumstances:<ul style="list-style-type: none">● Return or exchange, damage due to transportation or loading and unloading on the way of sending the device to repair.● Modification, disassembly, maintenance, or repair not authorized by our company.● Damage to the product due to accidental factors or human behavior; damage due to incorrect operation, etc.; damage to accessories due to use, maintenance, or preservation not required by the User Manual; damage due to using unauthorized consumables or spare parts.● Normal wear and tear, including cracks, scratches, wear, discoloration, or fading.● No valid invoice or warranty card; beyond the warranty period; warranty voucher not matching the product model or warranty voucher altered.● The product label, SN barcode, and anti-tampering label have been removed or damaged, and the text is blurred and cannot be recognized.● Damage due to force majeure.</div></div> <div>English</div>	<div>Service Information</div> <div><div>Consumer Service Hotline: 400 033 6333</div><div>Consumer Service Website: www.hihonorchoice.com</div><div><div>HONOR CHOICE SERVICE Scan the code to follow the service public account.</div></div><div>Legal Statement</div><div><div>This information is for reference only and will not represent any form of commitment at all. The product (including, without limitation, color, size, etc.) shall be as per the physical object.</div></div><div>English</div></div>	<div>Warranty Card</div> <table><tr><td>Product Model</td><td colspan="2"></td></tr><tr><td>SN No.</td><td colspan="2"></td></tr><tr><td rowspan="4">User Information</td><td>Name</td><td></td></tr><tr><td>Purchase Date</td><td></td></tr><tr><td>Tel</td><td></td></tr><tr><td>Address</td><td></td></tr><tr><td rowspan="3">Sales Unit Information</td><td>Invoice No.</td><td></td></tr><tr><td>Name</td><td>(Stamped with Company Seal)</td></tr><tr><td>Address</td><td></td></tr><tr><td rowspan="2">Fault Description</td><td>Tel</td><td></td></tr><tr><td></td><td></td></tr></table> <div>English</div>	Product Model			SN No.			User Information	Name		Purchase Date		Tel		Address		Sales Unit Information	Invoice No.		Name	(Stamped with Company Seal)	Address		Fault Description	Tel			
Product Model																															
SN No.																															
User Information	Name																														
	Purchase Date																														
	Tel																														
	Address																														
Sales Unit Information	Invoice No.																														
	Name	(Stamped with Company Seal)																													
	Address																														
Fault Description	Tel																														

