

Manufacturer:
Hansong(Nanjing) Technology Ltd.

Antenna Evaluating Report

Contact Information:

PM:

RD:

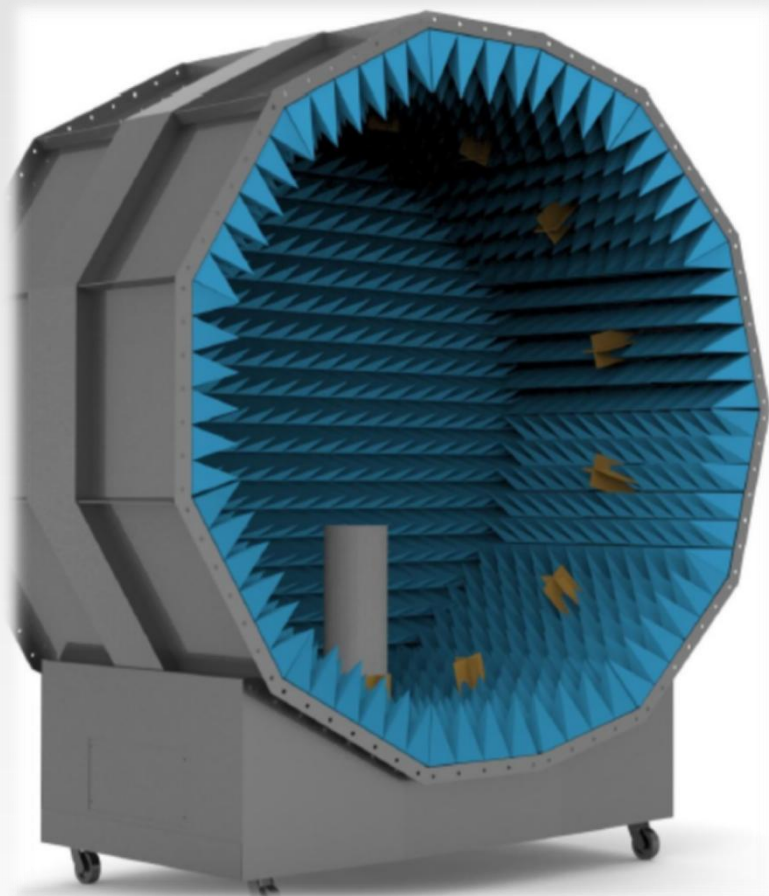
ME:

Prepared By:

Checked By:

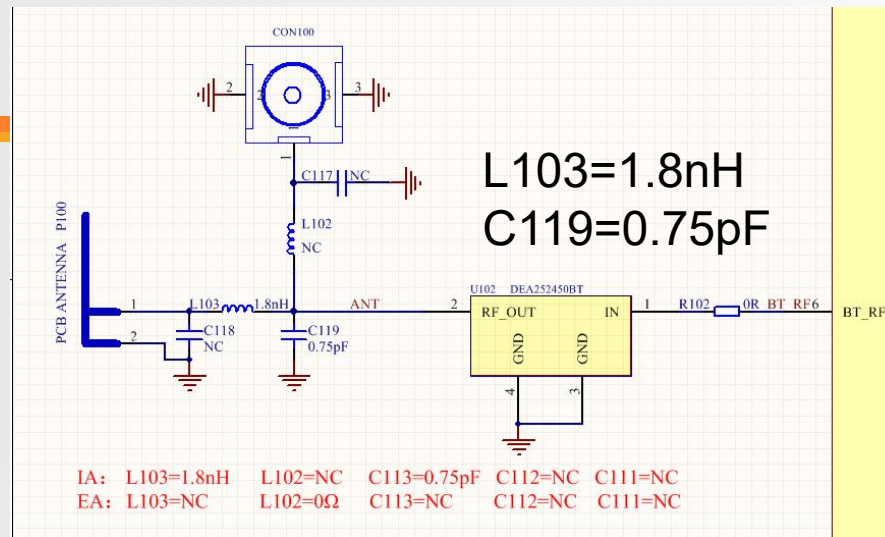
Date of Report:



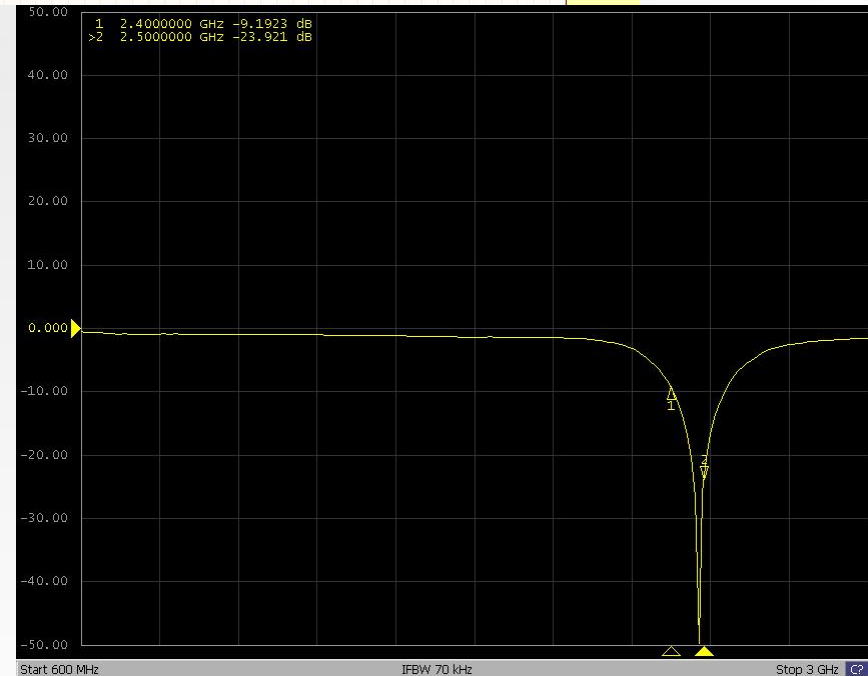
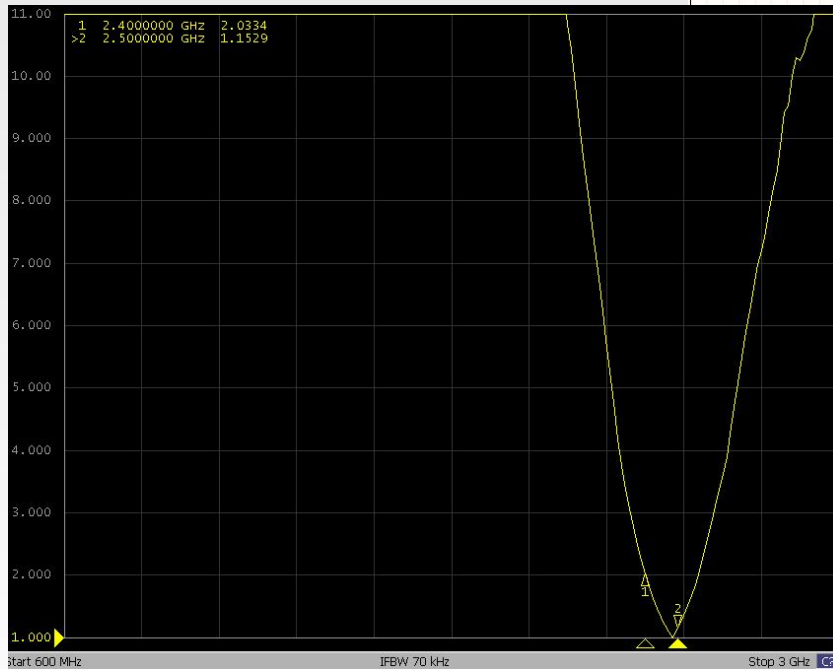


- Chamber : GTS Rayzone1800
- network analyzer : Agilent E5071C
- 2G/3G integrated measuring instrument : Agilent 8960
- LTE integrated measuring instrument : Anritsu MT8820
- TD integrated measuring instrument : StarPoint SP6010
- WIFI integrated measuring instrument : Anritsu MT8860
- GPS signal source : Agilent E4438C

antenna data



VSWR



3D-Gain

Freq	Effi	Peak EIRP
	(%)	Total (dBi)
2.4G	51.10	0.86
2.41G	54.16	1.11
2.42G	55.67	1.24
2.43G	56.80	1.47
2.44G	56.52	1.45
2.45G	62.14	1.91
2.46G	63.08	1.95
2.47G	62.14	1.94
2.48G	63.55	1.97
2.49G	59.12	1.64
2.5G	54.98	1.34

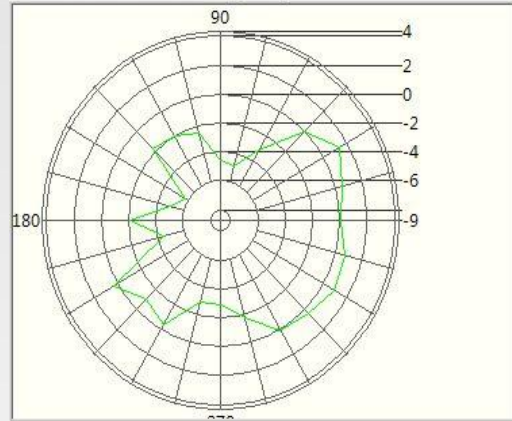


antenna data

2D Radiation Pattern

**2.4GHz
E-Plane**

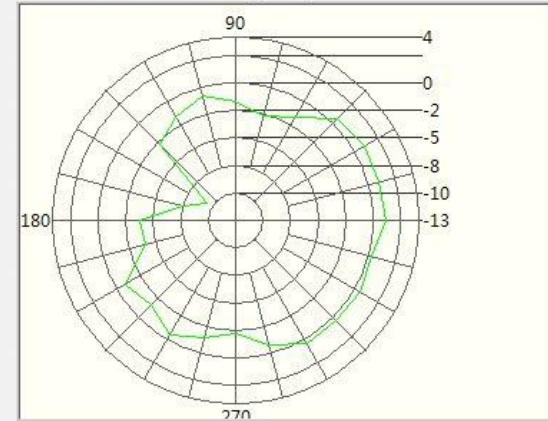
Excel XY Plot (Value dB / Angle deg.)



**2.5GHz
E-Plane**

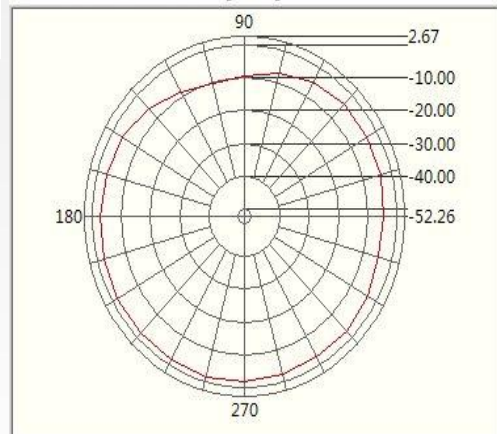
2D Radiation Pattern

Excel XY Plot (Value dB / Angle deg.)



H-Plane

Excel XY Plot (Value dB / Angle deg.)



H-Plane

Excel XY Plot (Value dB / Angle deg.)

