

Internal Picture

Photo 1

Description: internal view (For Internal Antenna Used)

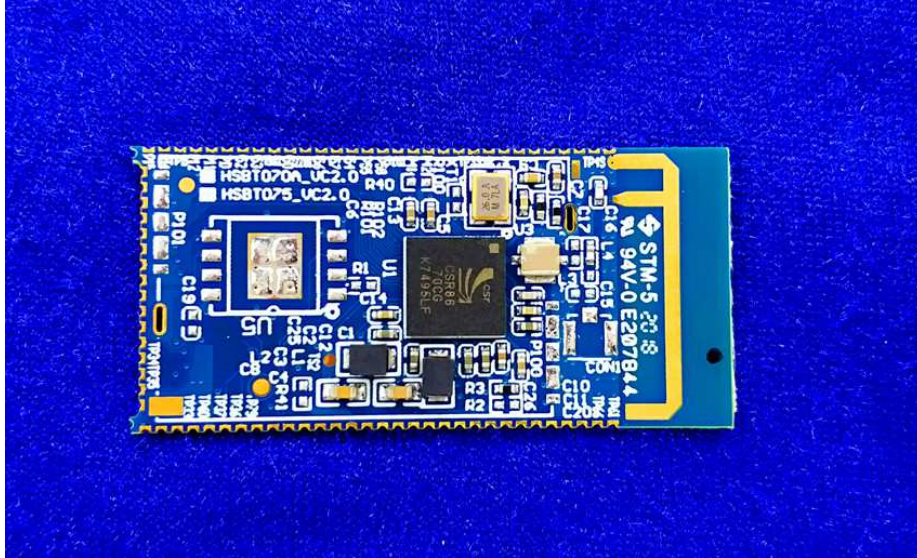


Photo 2

Description: internal view (For Internal Antenna Used)

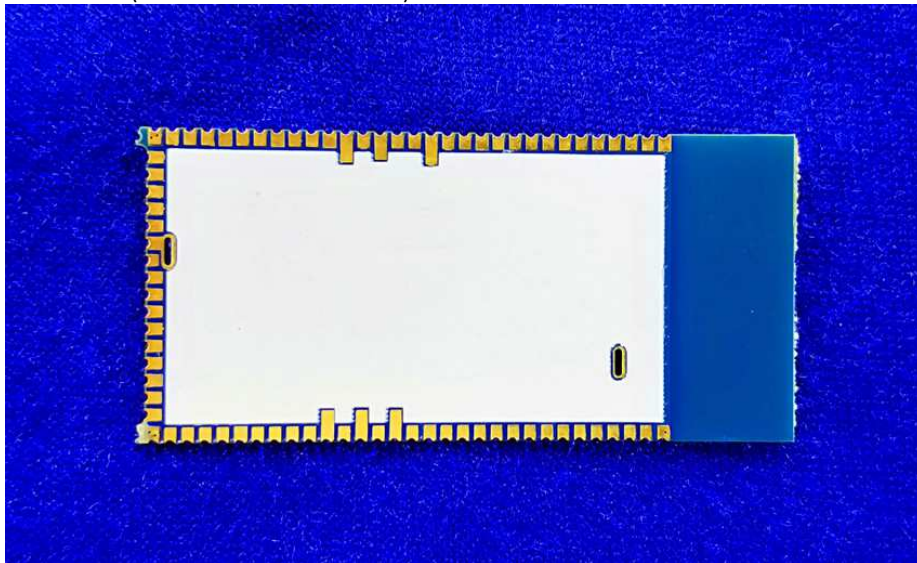


Photo 3

Description: internal view (For External Antenna Used)

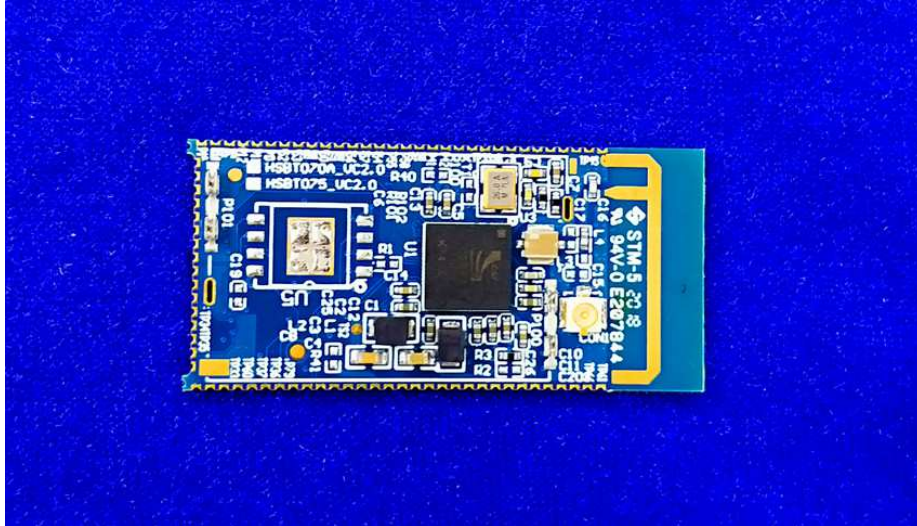


Photo 4

Description: internal view (For External Antenna Used)

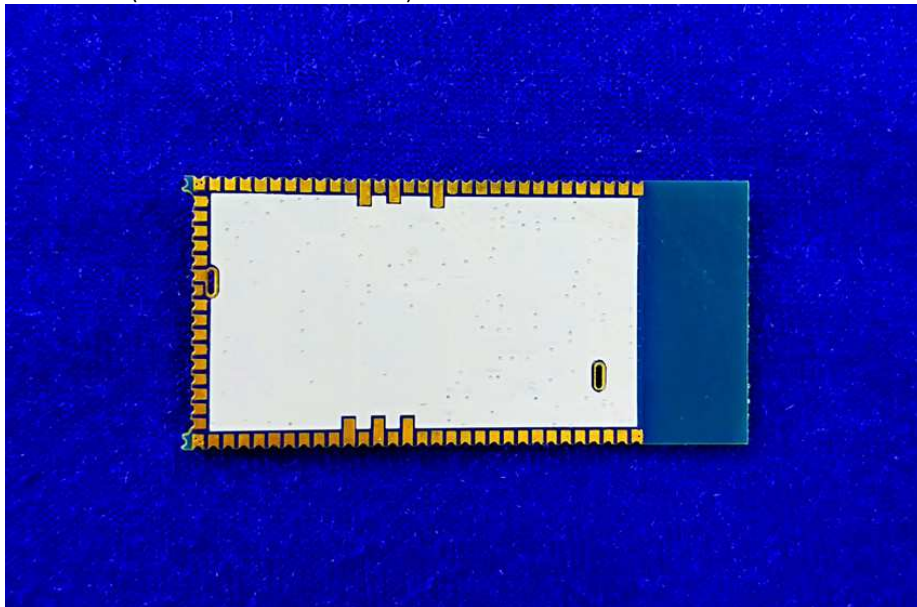


Photo 5

Description: Stand-alone configuration

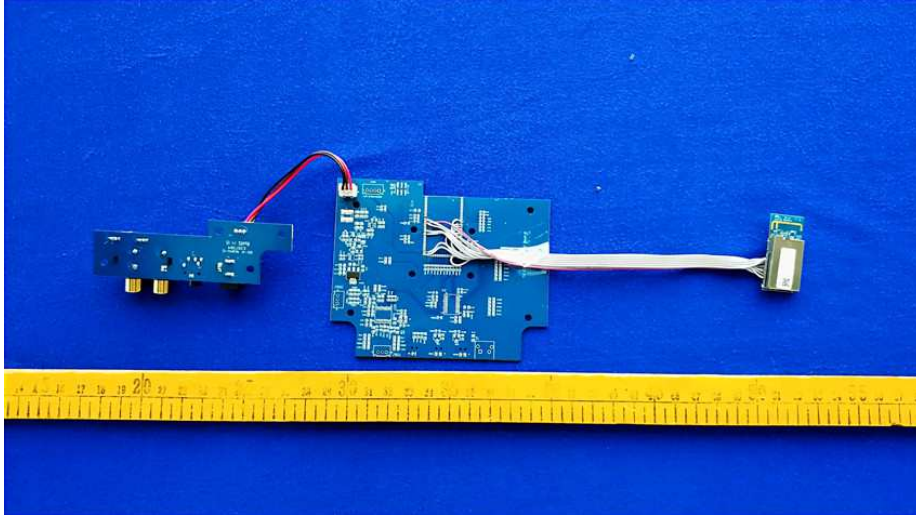


Photo 6

Description: External Antennas

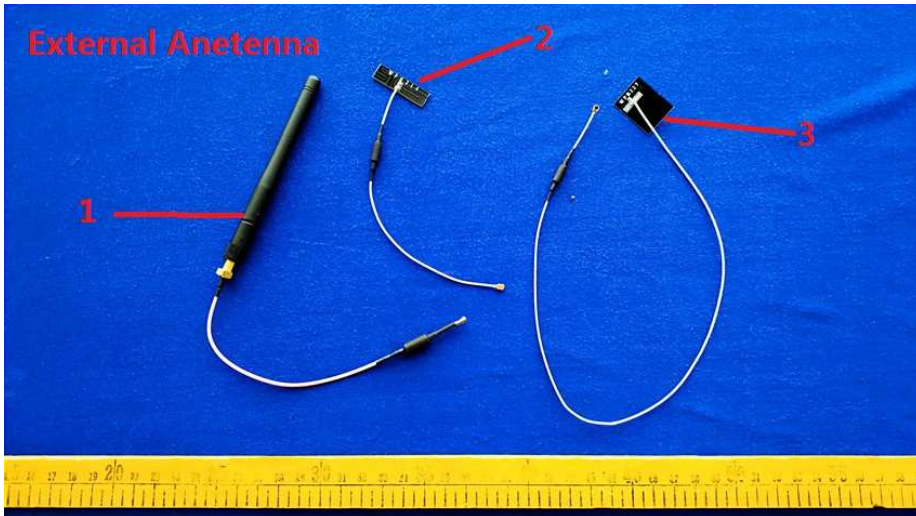


Photo 7

Description: Internal antenna on PCB

