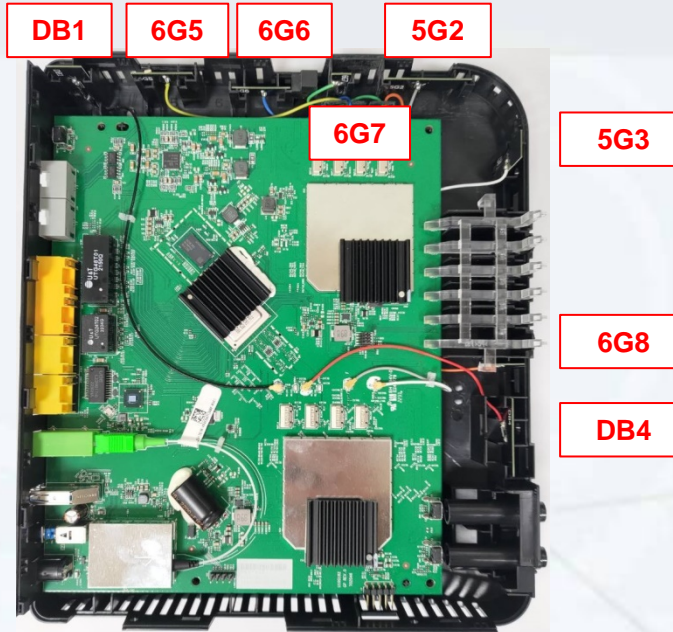


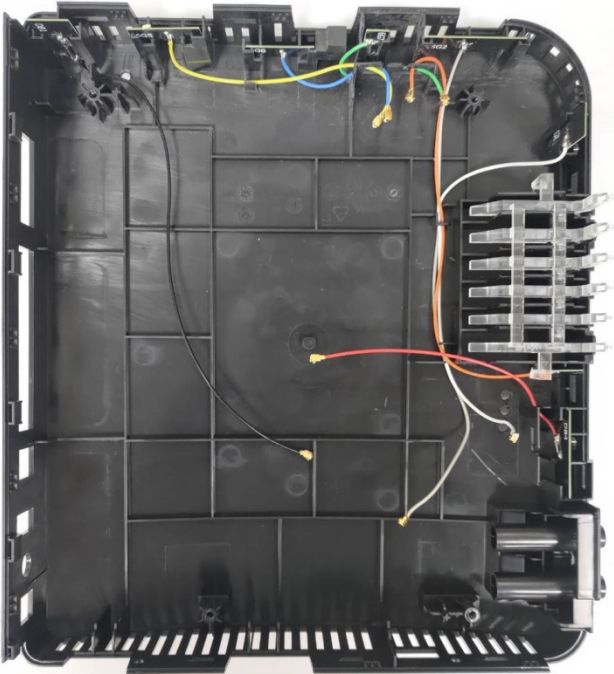
Antenna Placement & Solution



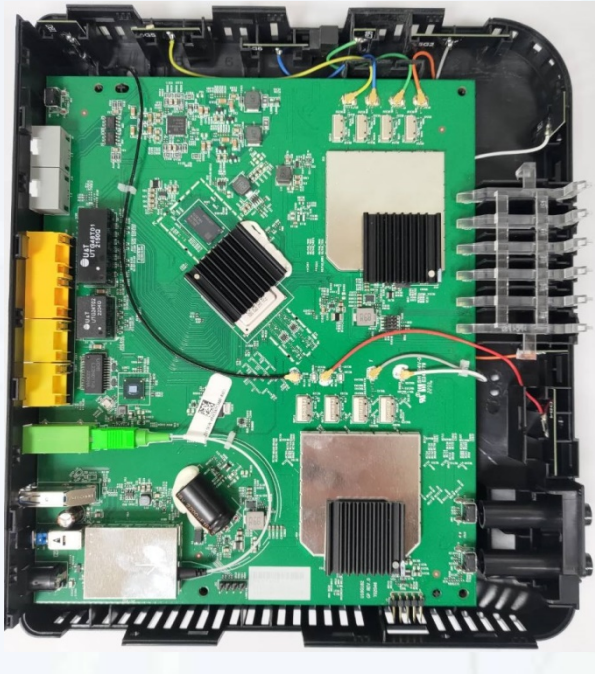
ANT	ANT Type	Size (L * W * H)	Cable Length (mm)	Cable Type	Connector
DB1	Dipole ANT	33.7mm*14.4mm*0.6mm	Total:215mm 、 Exposed:193mm	Φ=1.13	I-Pex
5G2	Dipole ANT	36.0mm*11.0mm*0.6mm	Total:214mm 、 Exposed:209mm	Φ=1.13	I-Pex
5G3	Dipole ANT	36.0mm*11.0mm*0.6mm	Total:185mm 、 Exposed:180mm	Φ=1.13	I-Pex
DB4	Dipole ANT	30.6mm*14.6mm*0.6mm	Total:113mm 、 Exposed:98mm	Φ=1.13	I-Pex
6G5	Dipole ANT	25.0mm*8.0mm*0.6mm	Total:122mm 、 Exposed:116mm	Φ=1.13	I-Pex
6G6	Dipole ANT	25.0mm*8.0mm*0.6mm	Total:73mm 、 Exposed:67mm	Φ=1.13	I-Pex
6G7	Dipole ANT	20.5mm*8.0mm*0.6mm	Total:78mm 、 Exposed:73mm	Φ=1.13	I-Pex
6G8	Dipole ANT	20.0mm*12.0mm*0.6mm	Total:187mm 、 Exposed:180mm	Φ=1.13	I-Pex

Antenna Placement & Solution

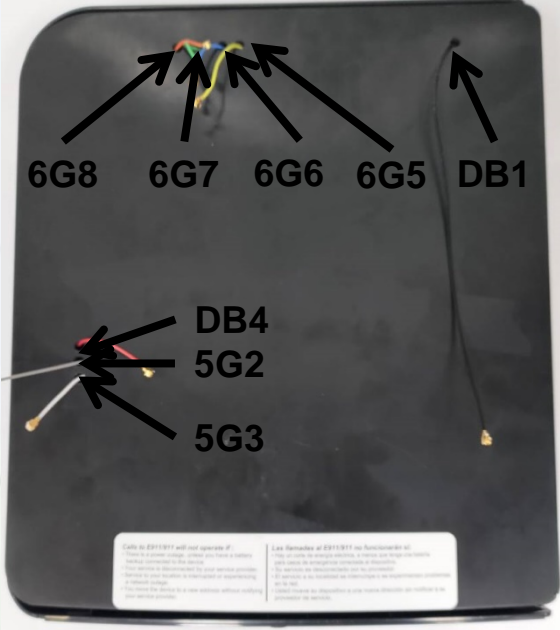
Front



Front

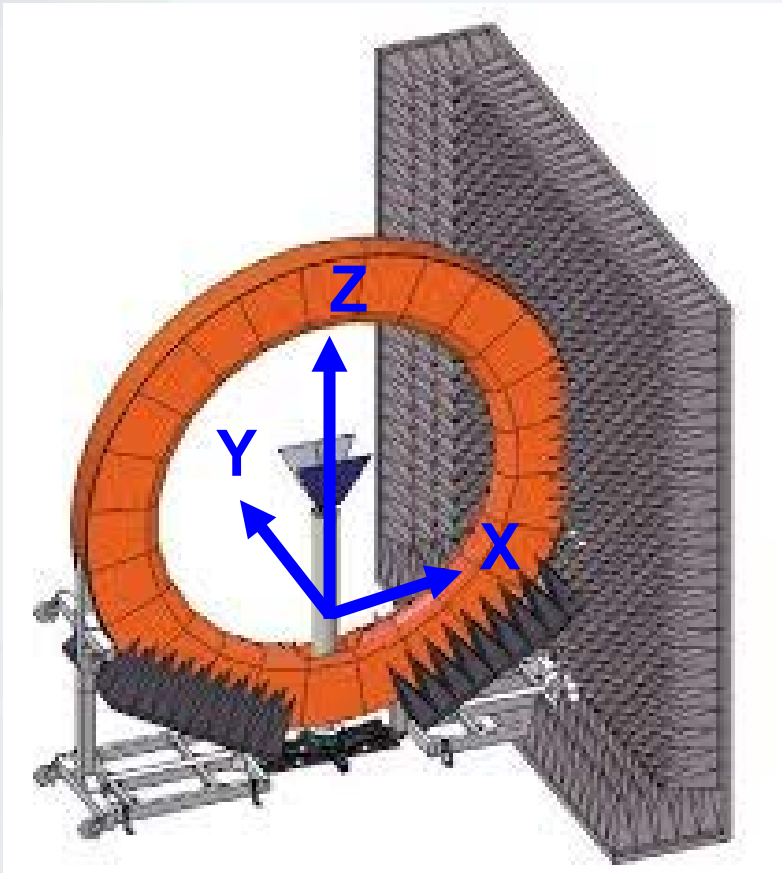


Back
Cable EXIT

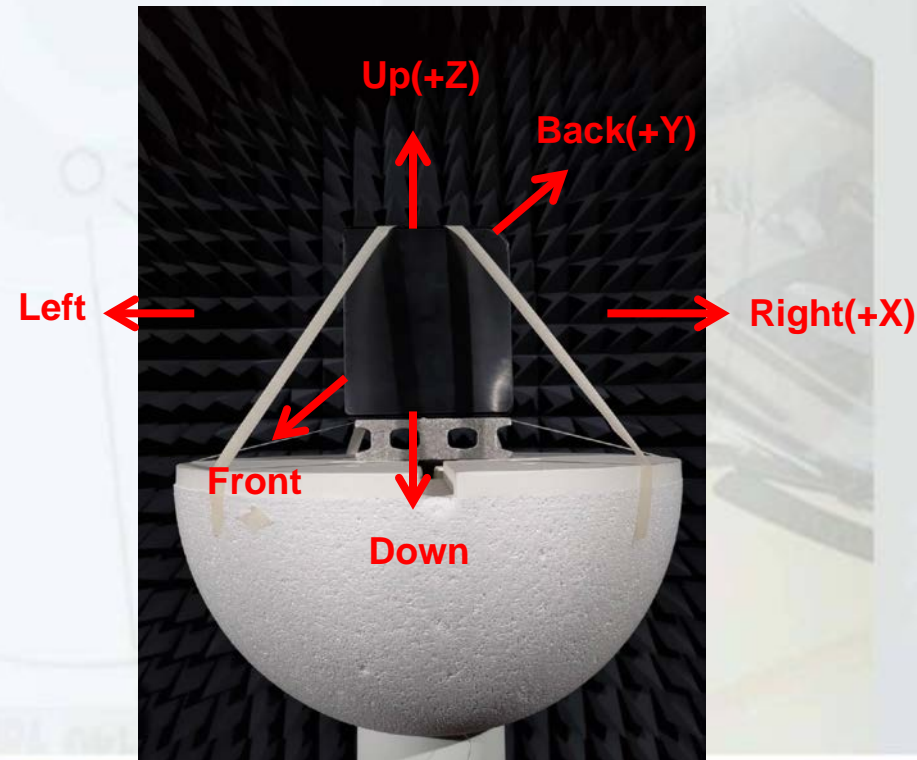


Test Setup for Radiation Pattern Measurement

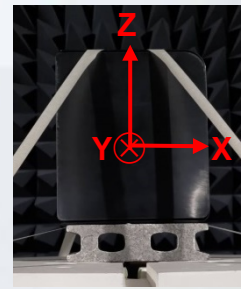
Chamber Information



- SATIMO SG-24L Multi-Probe Antenna Measurement System
 - Angle between probes: 15°
 - Frequency range: 400 MHz – 8.5 GHz
 - Chamber Room Size: 5m L x 5m W x 5m H
 - Software: Wave Studio
 - Calibration Date: 2021.12.20



2D Radiation Pattern Results



DB1

