

UBN2310

GPON



Safety Manual

IMPORTANT:

Read these instructions before using the device.

● **SAFETY NOTICES**

- Do not use this device in a humid space, in the rain or near splashing water.
- Do not install during thunder or lightning storms.
- For operation within the 5.15-5.25GHz and 5.47-5.725GHz frequency ranges, this device is restricted to indoor environments.
- Do not cover any ventilation openings in the device housing.
- Do not place the device near heat sources such as radiators or stoves.
- Clean the device with a clean, dry cloth. Do not use liquid or chemical cleaners.
- Disconnecting the device: If the device becomes damaged or encounters some other abnormality, disconnect the power plug from the AC wall outlet immediately.
- The device should be installed in a location not to exceed the maximum temperature of 40° Celsius (104° Fahrenheit).
- Keep the device away from children and pets.
- This equipment is not suitable for use in locations where children are likely to be present.
- Do not modify or attempt to disassemble the device. Use it only according to the instructions.
- Place the device on a cool surface. Failure to do so may result in overheating which can cause significant damage.
- Product information is located on the bottom panel of the apparatus.
- Do not dispose of the device in a trash container. Please recycle.

● **DECLARATION OF CONFORMITY**

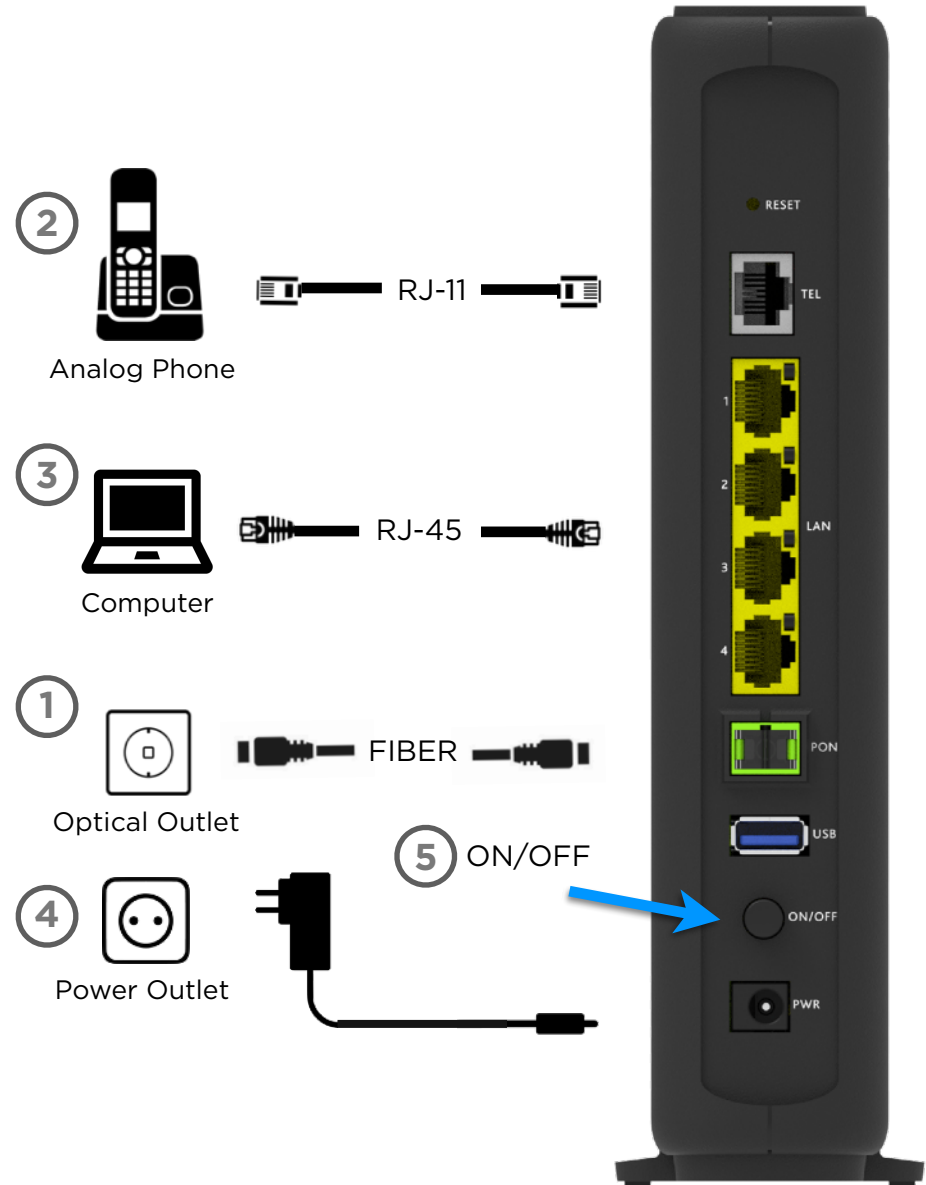
- This product is intended to be supplied by a Listed Power Adapter or DC power source marked "L.P.S." (or "Limited Power Source"), rated 12 Vdc, 2A minimum, Tma = 40 degree C minimum. If need further assistance, please contact HON LIN Technology Co., Ltd. for further information."
- Use only a Laser Class 1 optical transceiver:
 - CLASS 1 LASER PRODUCT & "IEC 60825-1:2014"
 - Complies with FDA performance standards for laser products except for conformance with IEC 60825-1 Ed. 3, as described in Laser Notice No. 56, dated May 8, 2019.
 - Caution - Use of controls or adjustments or performance of procedures other than those specified herein may result in hazardous radiation exposure.

Manufacturer:

Ubee Interactive Holding Corp. Taiwan Branch
10F-1, No. 5 Taiyuan 1st St. Jhubei City, Hsinchu County 302,
Taiwan

● **INSTALLATION INSTRUCTIONS**

1. Plug one end of a fiber optic cable into the green **PON** (passive optical network) port on the rear panel of the device. The connector will “click” into place when properly installed. Plug the other end into the optical wall outlet. **WARNING:** Do not look directly into the optical cable end or directly into the PON port as eye injury may occur.
2. For telephone service, connect one end of another RJ-11 phone cable (not included) to one of the grey **PHONE** ports. Connect the other end of the cable to the RJ-11 port of an analog telephone. Note that voice service must be provisioned by your service provider.
3. Connect an Ethernet cable (not supplied) to one of the yellow **LAN** (Ethernet) ports on the back panel of the modem and connect the other end to the Ethernet port of a PC. Use a Category 5e or Category 6 Ethernet cable. A PC should be connected initially for device installation and configuration.
4. Connect the power adapter (supplied) to the **POWER** port. Connect the other end to a power outlet.
5. Turn the modem on by pressing the **ON/OFF** button the rear panel.





- **Federal Communication Commission (FCC) Interference Statement**

This device complies with Part 15 of the FCC Rules. Operation is subject to the following two conditions: (1) This device may not cause harmful interference, and (2) this device must accept any interference received, including interference that may cause undesired operation.

This equipment has been tested and found to comply with the limits for a Class B digital device, pursuant to Part 15 of the FCC Rules. These limits are designed to provide reasonable protection against harmful interference in a residential installation. This equipment generates, uses and can radiate radio frequency energy and, if not installed and used in accordance with the instructions, may cause harmful interference to radio communications. However, there is no guarantee that interference will not occur in a particular installation. If this equipment does cause harmful interference to radio or television reception, which can be determined by turning the equipment off and on, the user is encouraged to try to correct the interference by one of the following measures:

- Reorient or relocate the receiving antenna.
- Increase the separation between the equipment and receiver.
- Connect the equipment into an outlet on a circuit different from that to which the receiver is connected.
- Consult the dealer or an experienced radio/TV technician for help.

5GHz Wireless Statement:

For operation within the 5.15-5.25GHz and 5.47-5.725GHz frequency ranges, this device is restricted to indoor environments.

This device meets all the other requirements specified in Part 15E, Section 15.407 of the FCC Rules.

FCC Caution:

Any changes or modifications not expressly approved by the party responsible for compliance could void the user's authority to operate this equipment.

This transmitter must not be co-located or operating in conjunction with any other antenna or transmitter.

Radiation Exposure Statement:

This equipment complies with FCC radiation exposure limits set forth for an uncontrolled environment. This equipment should be installed and operated with minimum distance 20 cm between the radiator & your body.