



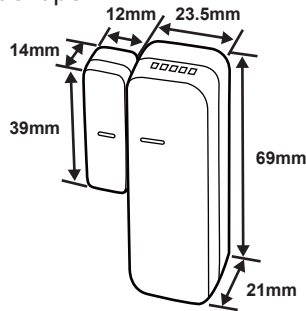
Overview

Name: Wireless Contact Sensor

Battery Type: CR123A x 1

Dimension: 21 x 69 x 23.5 mm, Magnet: 12 x 39 x 14 mm

Accessories: Magnet, Double-side Tape

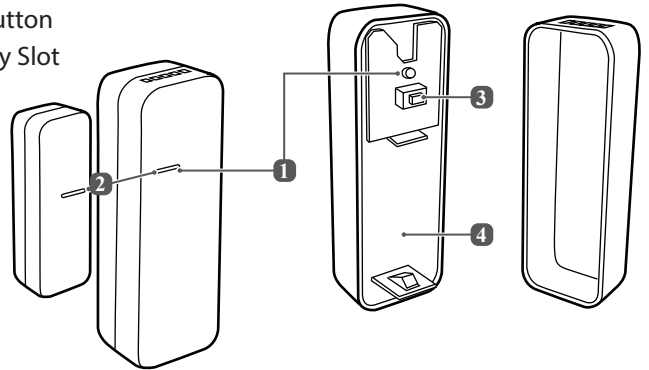


CAUTION

RISK OF EXPLOSION IF BATTERY IS REPLACED BY AN INCORRECT TYPE. DISPOSE OF USED BATTERIES ACCORDING TO THE INSTRUCTIONS.

Names of Parts

1. Status LED
2. Reed Switch Indicator
3. SET Button
4. Battery Slot



Features

- ❖ Burglar-Proof – once the device is triggered, the device will automatically send the signal wirelessly to the Gateway for monitoring the door/window status.
- ❖ Power Saving – one CR123A battery can be used for more than 3 year. It is also equipped with the low battery alert function.
- ❖ Easy Setup – Simply press the SET button at the front of the device to join the system at the first time.

Installation

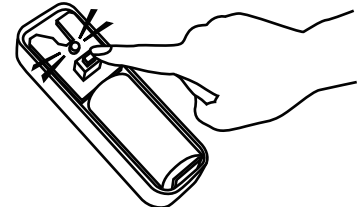
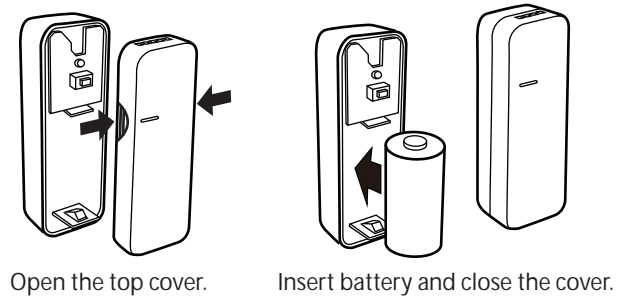
I. Before Installation

1. Power on the Gateway.
2. Waiting for about 90 seconds until the Gateway led light become solid green instead of blinking.

Note: We suggest to use auto joining all device via APP at the first time. Please refer to **APP Quick Installation Guide**.

II. Device Installation and Manual Joining

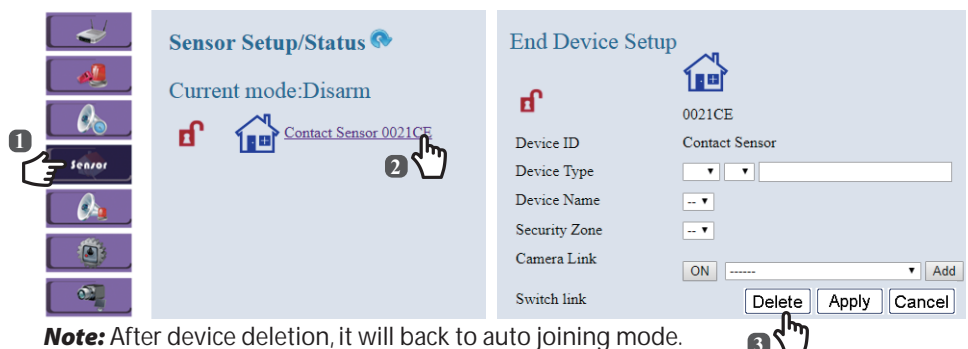
1. Press the both side of SCT-230N to open top cover. Install the battery .
Note: Do not use rechargeable battery.
2. Press the SET button at the top of the Gateway or short press the set button at the bottom of Router (Power Switching). Then press the SET button of device.
3. The Gateway/Router and the device are joining as both LED indicators blink blue light around 60 seconds. The device blinks light blue LED indicators once and turns off, indicating the device joining process is successful.
Note: If the device joining process is failed, both LED indicators on those joined devices will light blue and stop blinking after 60 seconds.
4. Use the double-sided tap or flathead screw to fix bottom case.



III. Device Deletion (Back to factory default settings)



1. First, Login into website.
About Login methods, please refer to **4. Basic Setting of Installation** in **Wireless Gateway Installation Guide**. (Page1).
2. To remove the device joining, take out the battery, long press SET button 10 seconds.

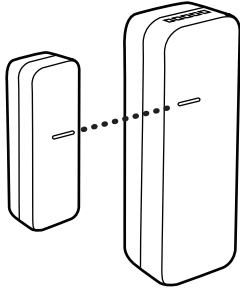
3. Delete the device from the website.
(See the features on the right side.)
4. Press and hold the set button of the device to install the battery. (Do not release the button while installing the battery.) After 6 seconds, the LED indicator blinks light blue once and starts blinking. That means device deletion successfully. (Please complete the procedure in 3 minutes.)



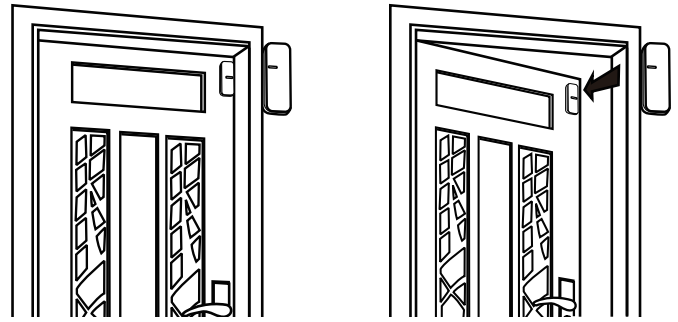
Note: After device deletion, it will back to auto joining mode.

Notice

- ❖ The  sign of left side of SCT-230N that need to align the middle sign  of upper cover for reed as below photo. The distance of device and reed is over 25mm, it will send the wireless signal.



- ❖ Mount the screw into the screw hole or stick the sticker at the static part on the frame side of the door or window and put the reed at the moving part on the frame side of the door or window as below photo.



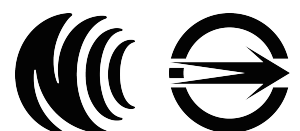
Troubleshooting

Problem	Solution
The LED indicator lights abnormally when linking to the system.	<ol style="list-style-type: none"> Make sure the battery has been properly installed and its power is adequate. Reset to factory default (Please see Installation, III. Device Deletion), and re-join to the system. If the problem persists, please contact your local distributor.
Cannot link to the system.	Check the distance between device and Gateway/Router (line of sight) is 50 meters (max). If there is any obstructions (i.e. walls or metal objects) between the devices, the distance will be shorter. Users can move the device closer or add a Router, then try again.

Specifications

Wireless Contact Sensor	
Communication Protocol	Zigbee Pro ZHA1.2
Frequency	2.4 GHz ISM band
Operation Range	Up to 50 meters (LOS)
Power Consumption	Working: max 38mA Standby: max 2uA (open), max 4uA (close)
CPU	JN5169
LED Indicator	Blue 1PCS LED Status: Trigger LED Flash Join LED Flash
Operation Interface	Push button switch for setting & Tamper
Operating Voltage	3.0 VDC
Battery Type	CR123A Battery (3V) x 1
Battery Life	max 3 year (Day Trigger 4Times)
Low battery life	3 Weeks
Sensor Type	Magnetic reed relay
Environmental Specification	Operating Temperature 0°C ~ 40°C Storage Temperature -20°C ~ 70°C Humidity 90% RH Max, Non-Condensing
Dimension (W x H x D)	21 x 69 x 23.5mm, (Magnet) 12 x 39 x 14 mm
Weight	14g (w/o Battery)

RF exposure warning statement



Federal Communications Commission (FCC) Statement

15.21

You are cautioned that changes or modifications not expressly approved by the part responsible for compliance could void the user's authority to operate the equipment.

15.105(b)

This equipment has been tested and found to comply with the limits for a Class B digital device, pursuant to part 15 of the FCC rules. These limits are designed to provide reasonable protection against harmful interference in a residential installation. This equipment generates, uses and can radiate radio frequency energy and, if not installed and used in accordance with the instructions, may cause harmful interference to radio communications. However, there is no guarantee that interference will not occur in a particular installation. If this equipment does cause harmful interference to radio or television reception, which can be determined by turning the equipment off and on, the user is encouraged to try to correct the interference by one or more of the following measures:

- Reorient or relocate the receiving antenna.
- Increase the separation between the equipment and receiver.
- Connect the equipment into an outlet on a circuit different from that to which the receiver is connected.
- Consult the dealer or an experienced radio/TV technician for help.

This device complies with Part 15 of the FCC Rules. Operation is subject to the following two conditions:

- 1) this device may not cause harmful interference and
- 2) this device must accept any interference received, including interference that may cause undesired operation of the device.

FCC RF Radiation Exposure Statement:

1. This Transmitter must not be co-located or operating in conjunction with any other antenna or transmitter.
2. This equipment complies with RF radiation exposure limits set forth for an uncontrolled environment. This equipment should be installed and operated with a minimum distance of 20 cm between the radiator and your body.