

ADJUSTMENT

Required Test Equipment

1. Stabilized Power supply

1. The supply voltage can be changed between 5V and 18V, and the current is 3A or more.
2. The standard voltage is 7.5V.

2. DC Ammeter

1. Class 1 ammeter (17 ranges and other features).
2. The full scale can be set to either 300mA or 3A.
3. A cable of less internal loss must be used.

3. Frequency Counter (f. counter)

1. Frequencies of up to 1GHz or so can be measured.
2. The sensitivity can be changed to 500MHz or below, and measurements are highly stable and accurate (0.2ppm or so).

4. Power Meter

1. Measurable frequency : Up to 500MHz
2. Impedance : 50 , unbalanced
3. Measuring range : Full scale of 10W or so
4. A standard cable (5D2W 1m) must be used.

5. RF Voltmeter(RF V.M)

1. Measurable frequency : Up to 500MHz or so.

6. Linear Detector

1. Measurable frequency : Up to 500MHz or so
2. Characteristics are flat, and CN is 60dB or more.

7. Digital Voltmeter

1. Voltage range : FS=18V or so
2. Input resistance : 1M or more

8. Oscilloscope

1. Measuring range : DC to 30MHz
2. Provides highly accurate measurements for 5 to 25MHz.

9. AF Voltmeter (AF V.M)

1. Measurable frequency : 50Hz to 1MHz
2. Maximum sensitivity : 1mV or more

10. Spectrum Analyzer

1. Measuring range : DC to 1GHz or more

11. Standard Signal Generator (SSG)

1. Maximum frequency : 500MHz or more
2. Output : -133dBm/0.05 μ V to 7dBm/501mV
3. Output impedance : 50

12. Tracking Generator

1. Center frequency : 50kHz to 500MHz
2. Frequency deviation : \pm 35MHz
3. Output voltage : 100mV or more

13. Dummy Load

1. 8 , 3W or more

14. AF Generator(AG)

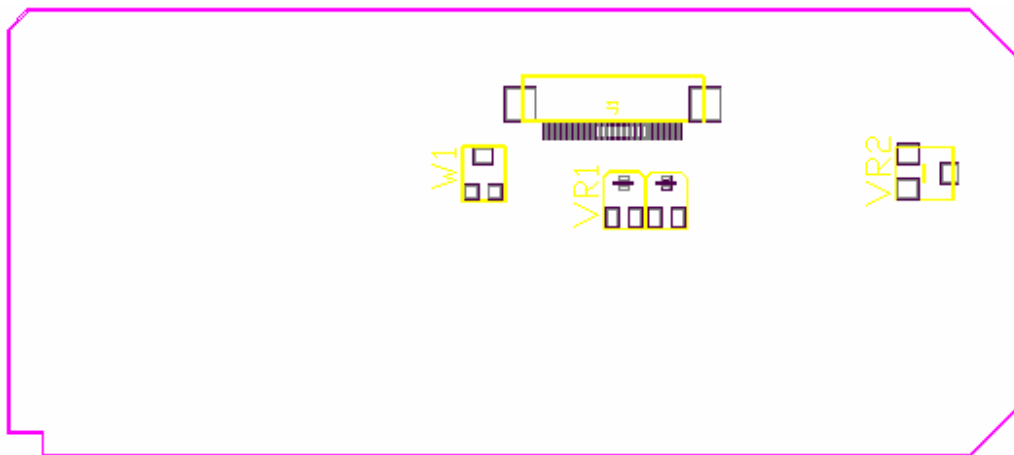
1. Frequency range : 100Hz to 100kHz
2. Output : 0.5mV to 1V

15. Distortion Meter

1. Measurable frequency : 30Hz to 100kHz
2. Input level : 50mV to 10Vrms

While holding MENU and EXIT key,turn power switch ON to enter Adjustment Mode

信道频率	压控电压	信噪比	功率	调制失真度	调制频偏	DCS,ctcss	频率误差
0-136.100	RX \geq 0.5V,TX \geq 0.5V	\geq 12dB (-122dBm)	\geq 3.5W	\leq 5%	4.0~4.3KHz		\leq 200Hz
1-151.250		\geq 12dB (-122dBm)	\geq 4W	\leq 5%	4.0~4.3KHz		\leq 200Hz
2-173.125	RX \leq 3.8V,TX \leq 2.5V	\geq 12dB (-122dBm)	\geq 3W	\leq 5%	4.0~4.3KHz		\leq 200Hz
3-136.125						0.5~0.9KHz	
4-151.750						0.5~0.9KHz	
5-173.175						0.5~0.9KHz	
6-136.150						0.5~0.9KHz	
7-151.150						0.5~0.9KHz	
8-173.225						0.5~0.9KHz	
9-400.125	RX \geq 0.4V,TX \geq 0.5V	\geq 12dB (-121dBm)	\geq 3.5W	\leq 5%	4.0~4.3KHz		\leq 200Hz
10-440.325		\geq 12dB (-121dBm)	\geq 4W	\leq 5%	4.0~4.3KHz		\leq 200Hz
11-469.225	RX \leq 4.2V,TX \leq 3.8V	\geq 12dB (-121dBm)	\geq 3W	\leq 5%	4.0~4.3KHz		\leq 200Hz
12-400.150						0.5~0.9KHz	
13-440.350						0.5~0.9KHz	
14-469.250						0.5~0.9KHz	
15-400.175						0.5~0.9KHz	
16-440.375						0.5~0.9KHz	
17-469.275						0.5~0.9KHz	
18-150.125					2.0~2.5KHz		
19-440.425					2.0~2.5KHz		



W1:HI POWER ADJUST

VR1:MAX DEVIATION ADJUSTMENT
VR3:FREQUENCY ADJUSTMENT