

## IP CAMERA



## USER MANUAL

Model# SC-BIPC-1001

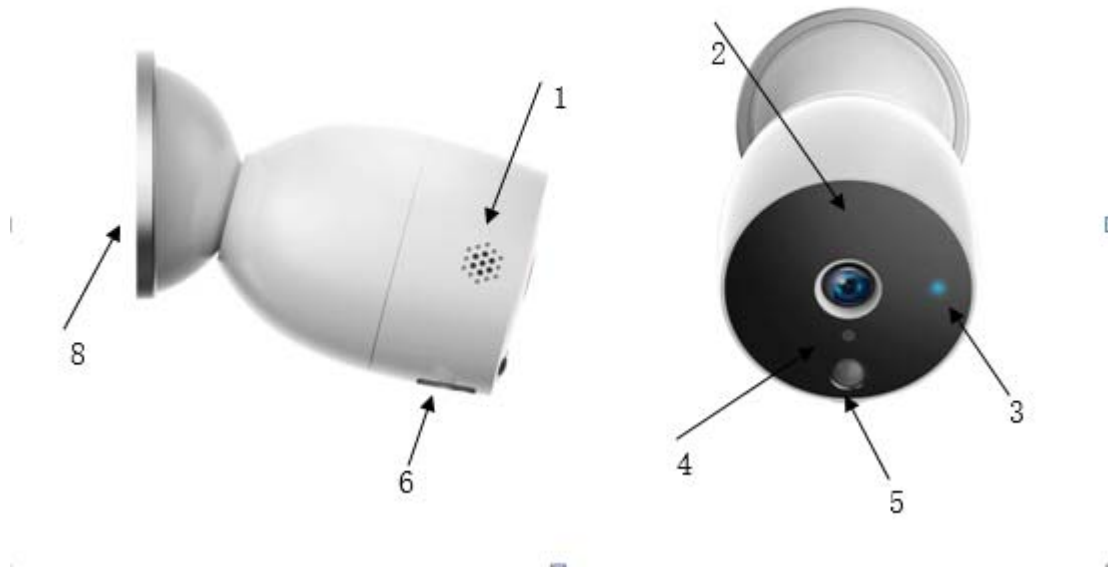
For ongoing product improvement, this manual is subject to modification without prior notice

Thank you for purchasing the eco4life IP camera. We are excited in being a part of making your life easier, safer and bringing peace of mind into your homes.

### **What in the box?**

- 1x Camera
- 6x Battery
- 1x Warranty
- 1x User manual
- 2x Screws
- 2x Plastic housing

## Product overview



1. Speaker
2. Microphone
3. Indicator Light  
Solid Red light on: the camera network is abnormal  
Slowly Blinking red light: awaiting WiFi connection  
( Hold on the reset button for 5seconds to set the red light to Slowly blink )  
Solid blue light on: camera running correctly  
Blinking blue light: Currently Connecting
4. Light sensor
5. Motion sensor
6. Micro USB port  
Connect the camera to the computer, to copy the video from camera to computer.
7. Turn the upper half part of the camera clockwise and pull it up to open the camera to put the battery
8. Camera base  
Hang it on the wall by the screws



9. SD slot ( SD slot is inner the camera)
10. Reset button



### Set-up

1. Install 6pcs AA battery into the camera.
2. Download our eco4life app by scanning QR code below or searching from you app store.  
Follow our prompts to finish setup.

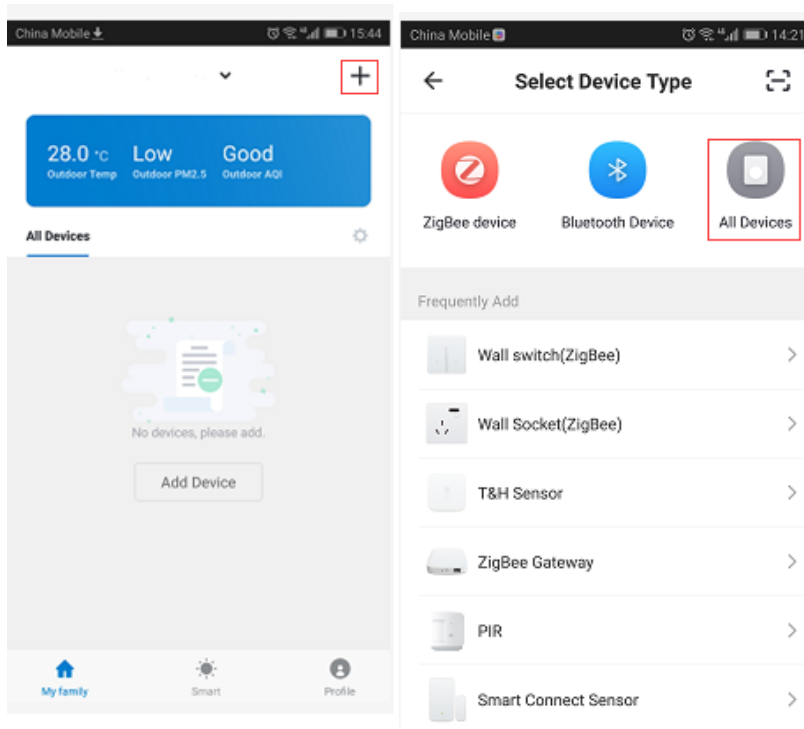


Important reminders before adding the device:

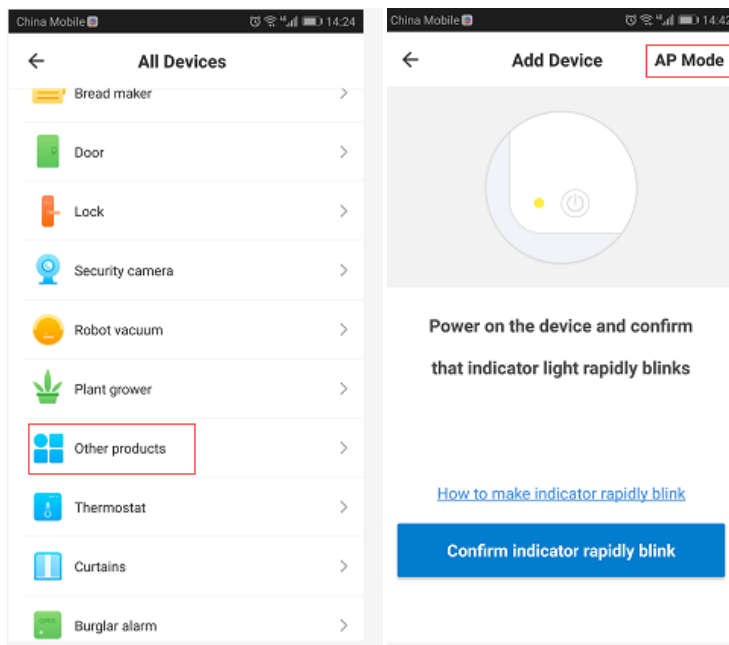
1. This camera only supports 2.4GHZ WiFi router, please make sure you are using a 2.4GHZ WiFi router.
2. Please follow the instructions and make sure the password is entered correctly.
3. Only one camera and one registered account is allowed by the app. if a Registered account added the camera through the APP, another User can not longer add and register an account.
4. You must delete the first Registered Account from the App, then another User may add the device and register an account.

## How to add the device:

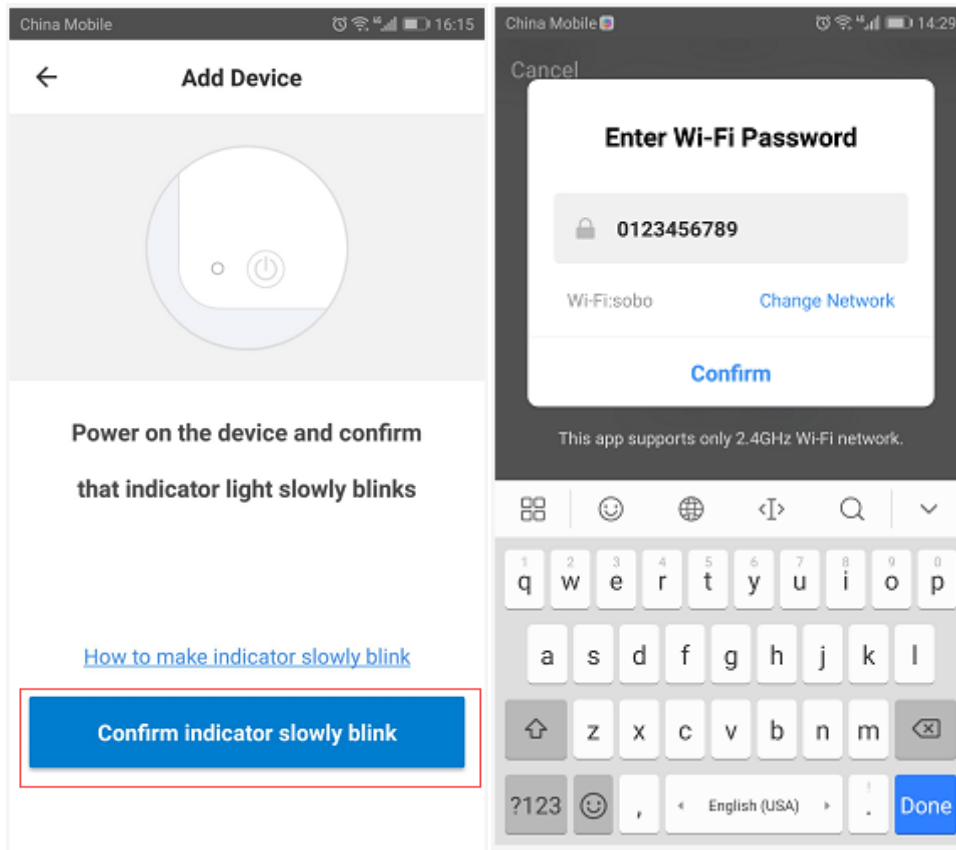
Step 1: Open the eco4life App, click"+", Select" All devices" then select "other devices"



Select "other devices", and click" AP mode"

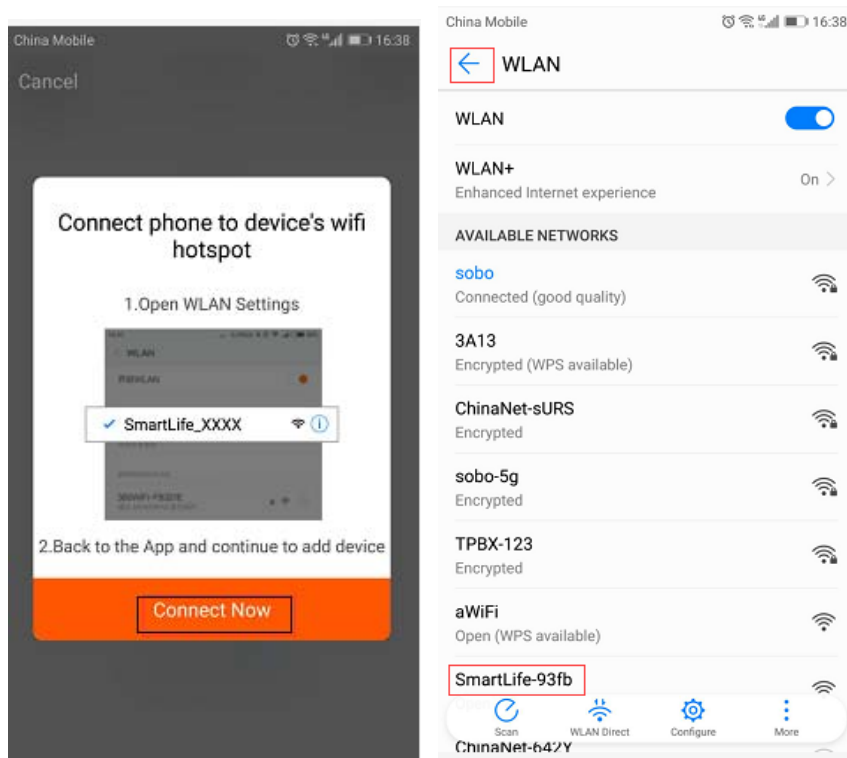


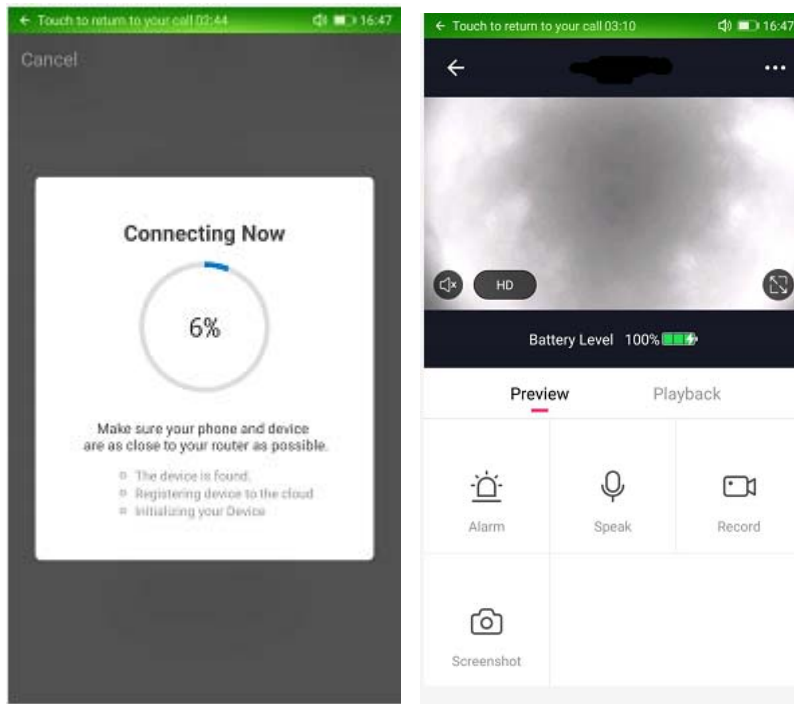
Make sure the indicator light is slowly blinking, and click " Confirm indicator slowly blink"  
Select the WiFi router and input the WiFi password, and click the " Confirm"



Click "Connect Now", and select the wlan "SmartLife-93fb" to connect.

Press the back arrow of the top left corner. Will begin the configuration of the mobile and the camera,





**FCC Statement:**

This device complies with Part 15 of the FCC rules. Operation is subject to the following two conditions: 1) this device may not cause harmful interference, and 2) this device must accept any interference received, including interference that may cause undesired operation.

Note: This equipment has been tested and found to comply with the limits for a Class B digital device, pursuant to part 15 of the FCC Rules. These limits are designed to provide reasonable protection against harmful interference in a residential installation.

This equipment generates uses and can radiate radio frequency energy and, if not installed and used in accordance with the instructions, may cause harmful interference to radio communications. However, there is no guarantee that interference will not occur in particular installation. If this equipment does cause harmful interference to radio or television reception, which can be determined by turning the equipment off and on, the user is encouraged to try to correct the interference by one or more of the following measures:

- Reorient or relocate the receiving antenna.
- Increase the separation between the equipment and receiver.
- Connect the equipment into an outlet on a circuit different from that to which the receiver is connected.
- Consult the dealer or an experienced radio/TV technician for help.

Changes or modifications not expressly approved by the party responsible for compliance could void the user's authority to operate the equipment.

**FCC Radiation Exposure Statement**

This device complies with FCC RF radiation exposure limits set forth for an uncontrolled environment. This transmitter must not be co-located or operating in conjunction with any other antenna or transmitter.

This device must operate with a minimum distance of 20 cm between the radiator and user body.