



## HUB-ALARM

### User Manual

Model# SH12A01

Thank you for purchasing the eco4life Smart Siren with Hub. We are excited in being a part of making your life easier, safer and bringing peace of mind into your homes.

#### Remote Access

When used with eco4life and eco4life power, Hub allows you to control & appliances from virtually anywhere on your phone

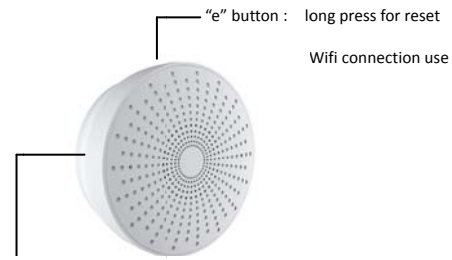
#### Night light

Built in night light

#### Window/Door sensor alarms

When the sensor is triggered, it signals alarm to ring and the camera to record activity

#### Product image



Back light LED: 1. Indicator for wifi connection  
2. Night light function

#### Installation

**Plug** your hub into a wall outlet centrally located in your home or office  
A red light should illuminate, indicating the hub is powered on and ready.

**Download** the free eco4life App from the Google Play or Apple App store onto your smart phone



Step 2. Plug in the Super siren into an existing power outlet

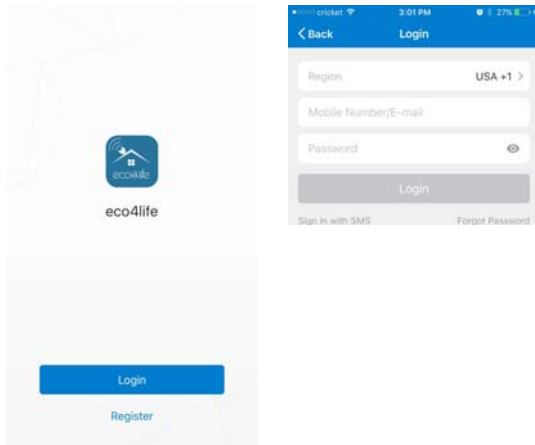
Step 3. Press the "e" button and hold on 5 seconds to pair to your smart phone, until the back light flashing. It means the Super siren is standby to connect the wifi network.

Once the smartphone and hub are paired, the hub will start searching nearby routers. Enter your Wi-Fi password is accepted, the indicator light will become steady for 3 seconds before going off.

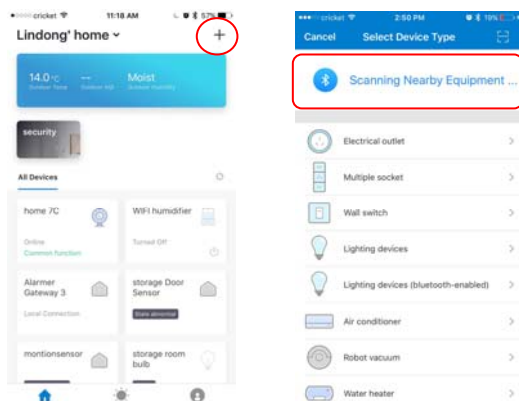
Step 4. WI-FI/Bluetooth Bridge

Converts BLE to WIFI and WIFI to BLE

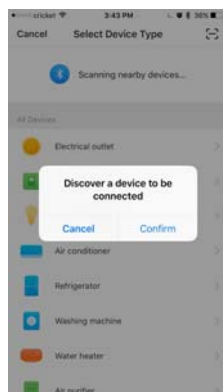
Open the app, and registration your account



phone by Bluetooth, Touch “+” in the top right corner of your phone and select “scanning nearby equipment...”

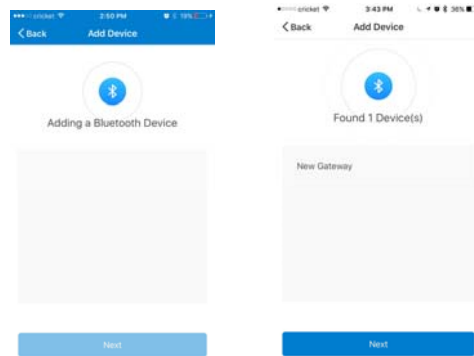


b. Once the app scanned the Super siren device , will show as below:



c. Press “confirm” to add the device, app will

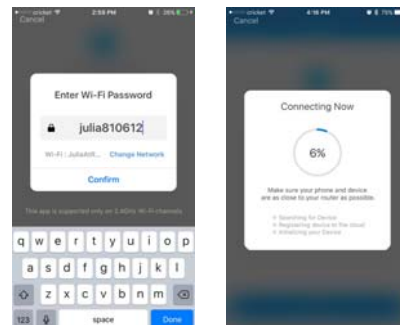
show as bellow:



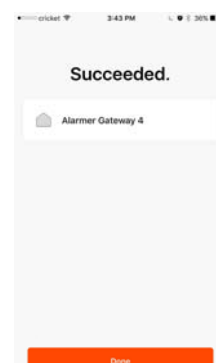
( It means the Super Siren connected your smartphone via Bluetooth. )

d. WIFI connection

Input your home wifi password to connect the hub to your wifi router, app will guide to this step

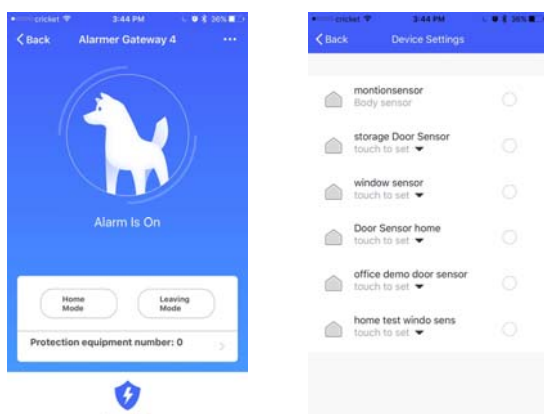


e. Connection successful will show as below:



Congratulations, you connect your super siren connected successful. Then you can according to you desire to add the window sensor, motion sensors... to

set your home security. Or set your smart home scene.  
(according to bellow app guide to do the setting)



**Indicator State:**

**light keep on:** night light mode

**light Flashing:** ready for the connection

**light off:** No power

remark:

Put the others eco4life hardware in the area of the super siren covering range.

10 meters is the good range for Bluetooth hardware

**Specification**

Bluetooth:4.0 Version

APP Support:IOS/Android

Working Temperature: -20°C ~ 60°C

Night light

**Perfect for**

**Frequent travelers**

Set or change your timers from the road

**Pet Owners**

**Staying late at works**

Turn your lights on your pets anytime, from anywhere.

**Energy Saving**

Never leave your lights on again

**NOTE:**

Put all your smart home devices in the signal coverage area . It will take the devices response more sensitivity.

**Package Contents**

- 1x Siren gateway
- 1x User Manual
- 1x Warranty Card

**Troubleshooting**

Q: I am having trouble getting my smartphone to connect my smart Siren with hub

A: Different phones may behave differently when connecting to eco4life smart siren with hub. When experiencing difficulties, try the following steps;

- 1、 Turn Wi-Fi & BLE off, then turn them back on, Try to connect again.
- 2、 Close the Eco4life App & restart the App - try to connect.
- 3、 Uninstall the App & download it again

For more troubleshooting help, please visit [www.sonicgracehome.com](http://www.sonicgracehome.com) FAQ or send us an email at [cs@sonicgracehome.com](mailto:cs@sonicgracehome.com)

**FCC Statement:**

This device complies with Part 15 of the FCC rules. Operation is subject to the following two conditions: 1) this device may not cause harmful interference, and 2) this device must accept any interference received, including interference that may cause undesired operation.

Note: This equipment has been tested and found to comply with the limits for a Class B digital device, pursuant to part 15 of the FCC Rules. These limits are designed to provide reasonable protection against harmful interference in a residential installation.

This equipment generates uses and can radiate radio frequency energy and, if not installed and used in accordance with the instructions, may cause harmful interference to radio communications. However, there is

no guarantee that interference will not occur in particular installation. If this equipment does cause harmful interference to radio or television reception, which can be determined by turning the equipment off and on, the user is encouraged to try to correct the interference by one or more of the following measures:

- Reorient or relocate the receiving antenna.
- Increase the separation between the equipment and receiver.
- Connect the equipment into an outlet on a circuit different from that to which the receiver is connected.
- Consult the dealer or an experienced radio/TV technician for help.

Changes or modifications not expressly approved by the party responsible for compliance could void the user's authority to operate the equipment.

#### FCC Radiation Exposure Statement

This device complies with FCC RF radiation exposure limits set forth for an uncontrolled environment. This transmitter must not be co-located or operating in conjunction with any other antenna or transmitter.

The distance between user and products should be no less than 20cm.