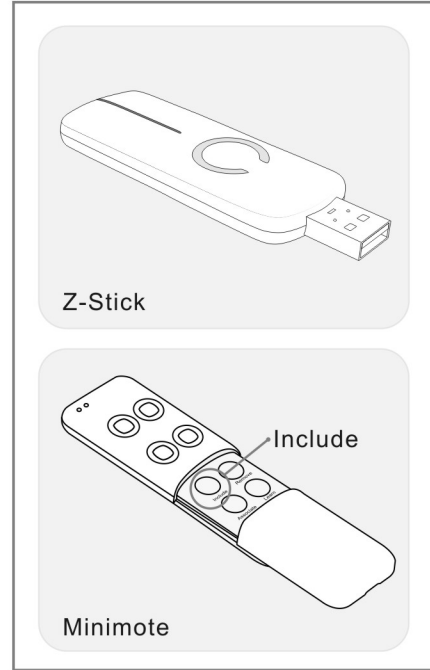
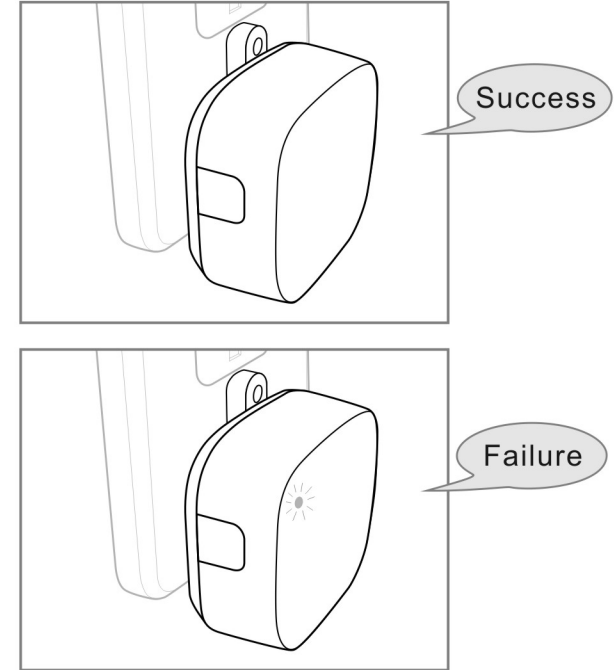


Decide on where you want your Repeater to be placed and plug it in. Its main light will begin to blink.



If you're using a Z-Stick:
Press the Action Button on your Z-Stick.
Press the Action Button on your Repeater.

If you're using a Minimote:
Press the Include on your Minimote.
Press the Action Button on your Repeater.



If your Repeater has been successfully linked to your network, its light will no longer blink.

If the linking was unsuccessful the light will continue to blink.