



Professional ODM/OEM supplier

AWM50G-US

(WT-mU-MTRa01) (AWM503g-WT)

User's Manual

Part Name: 802.11b/g Wireless Module

Part No.: AWM50G-US

Version: V1.0

Revision History

| Release | Date | Revision | Initials |
|---------|-----------|-----------------|----------|
| 1.0 | 2009-4-24 | Initial release | SH |

Table of Contents

| | |
|---|-----------|
| 1.INSTALL THE DRIVER ----- | 5 |
| 2.CONNECT ----- | 8 |
| 3.MAKE INFRASTRUCTURE CONNECTION ----- | 9 |
| 4.HELP INFORMATION IN RAUI ----- | 10 |
| 5.MAKE AD-HOC MODE CONNECTION ----- | 11 |
| APPENDIX A: TERMINOLOGY ----- | 15 |
| APPENDIX B: IMPORTANT NOTICES ----- | 16 |

IMPORTANT NOTE

In the event that these conditions can not be met (for example certain laptop configurations or co-location with another transmitter), then the FCC authorization is no longer considered valid and the FCC ID can not be used on the final product. In these circumstances, the OEM integrator will be responsible for re-evaluating the end product (including the transmitter) and obtaining a separate FCC authorization.

Important Information Required By the FCC

The Manufacturer is not responsible for any radio or TV interference caused by unauthorized modifications to this equipment. Such modifications could void the user's authority to operate the equipment

RF Exposure Statement

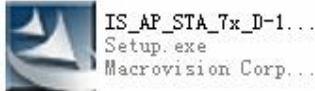
To maintain compliance with FCC's RF exposure guidelines, this equipment should be installed and operated with minimum distance between 20cm the radiator and your body: Use only the supplied antenna.

AWM50G-US User's Manual

(WT-mU-MTRa01) (AWM503g-WT)

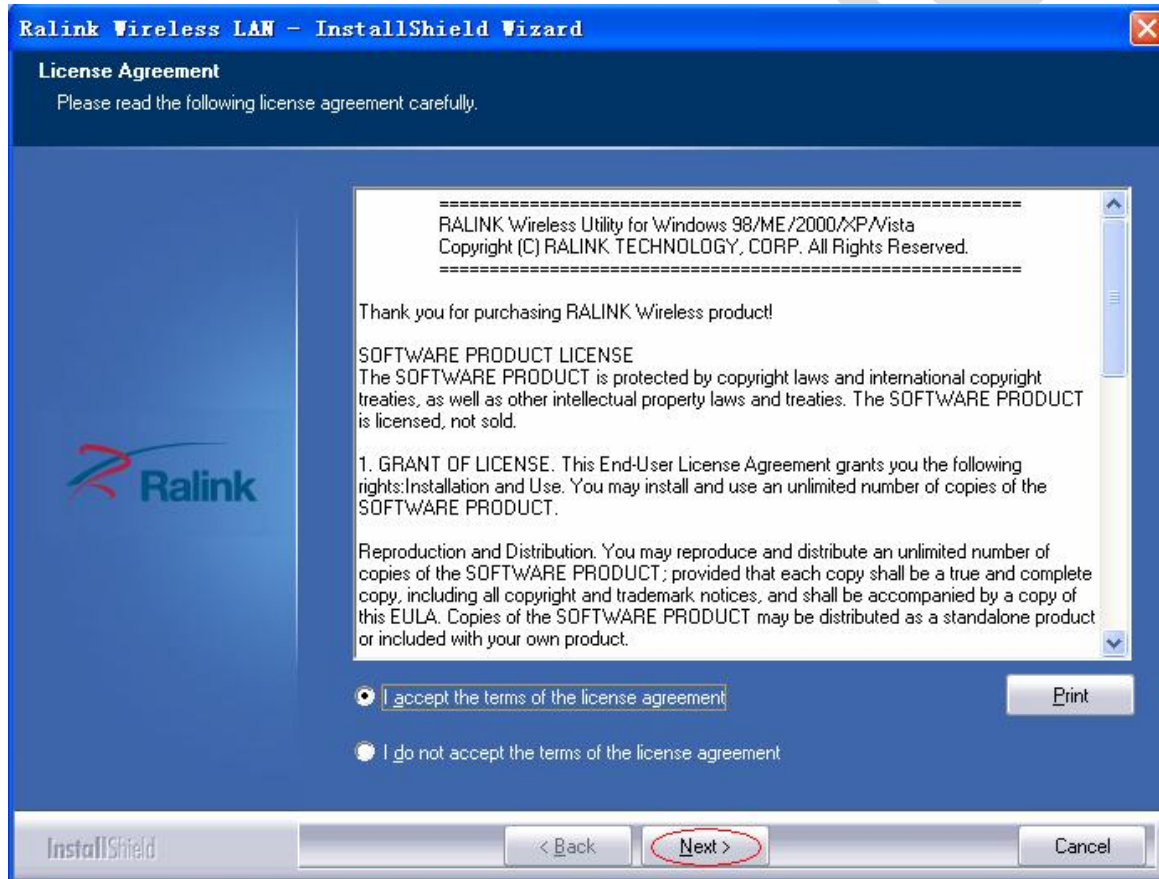
1. Install the driver

Step1 Insert the installation CD into your CD-ROM driver, Double click the icon

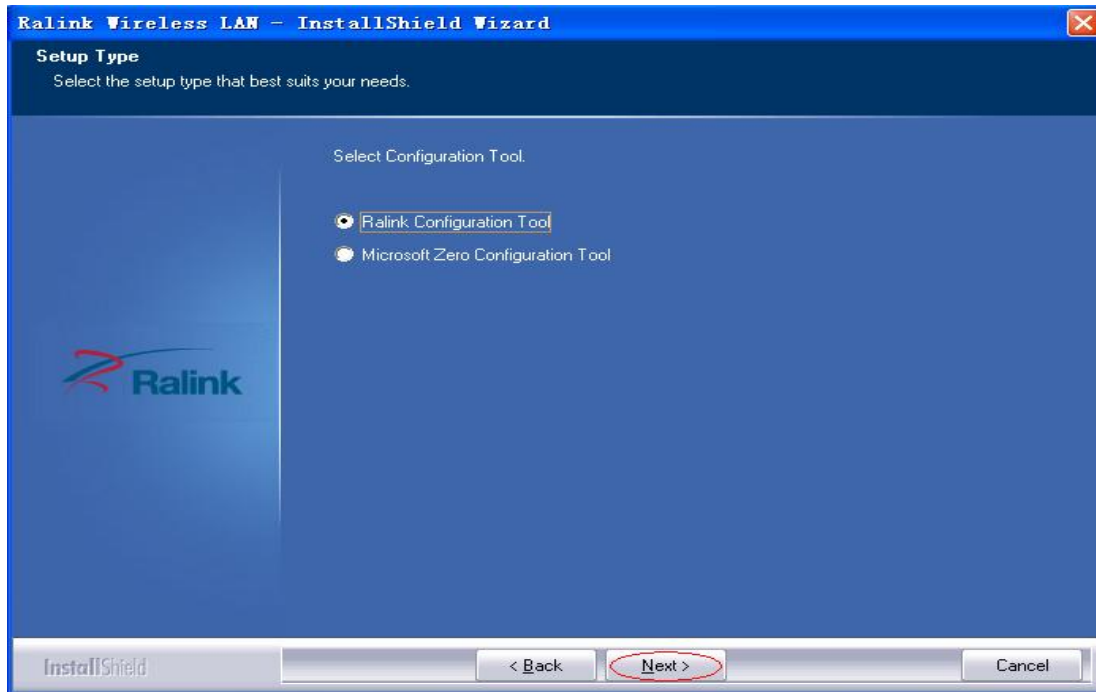


to start setup.

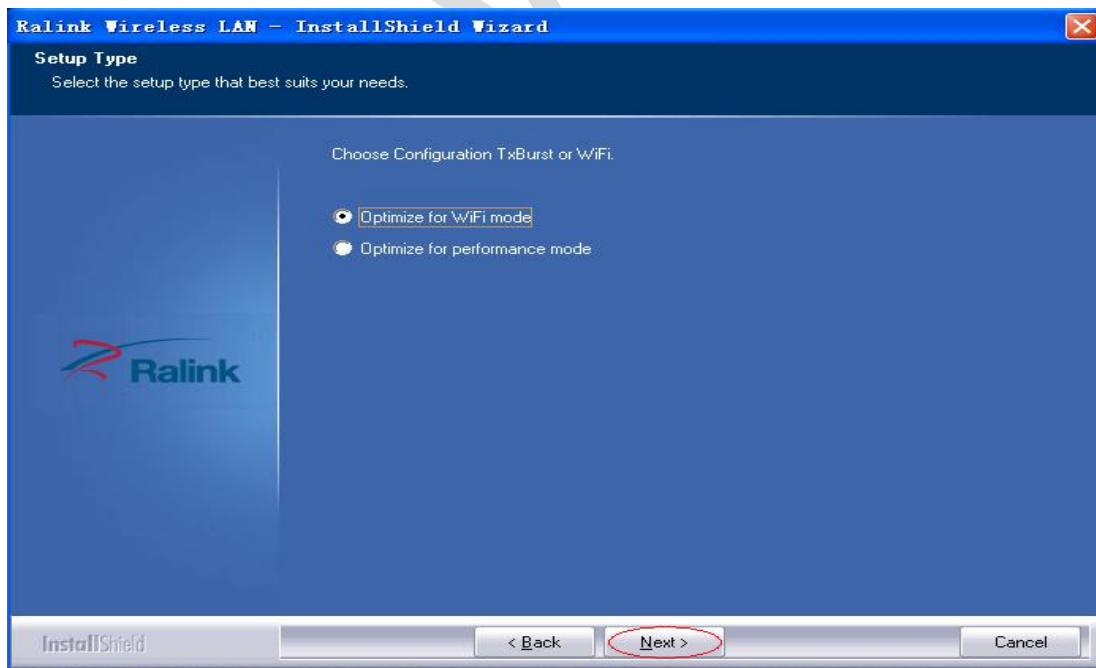
Step2 Choose **I accept the terms of the license agreement** and click **next** to go on.



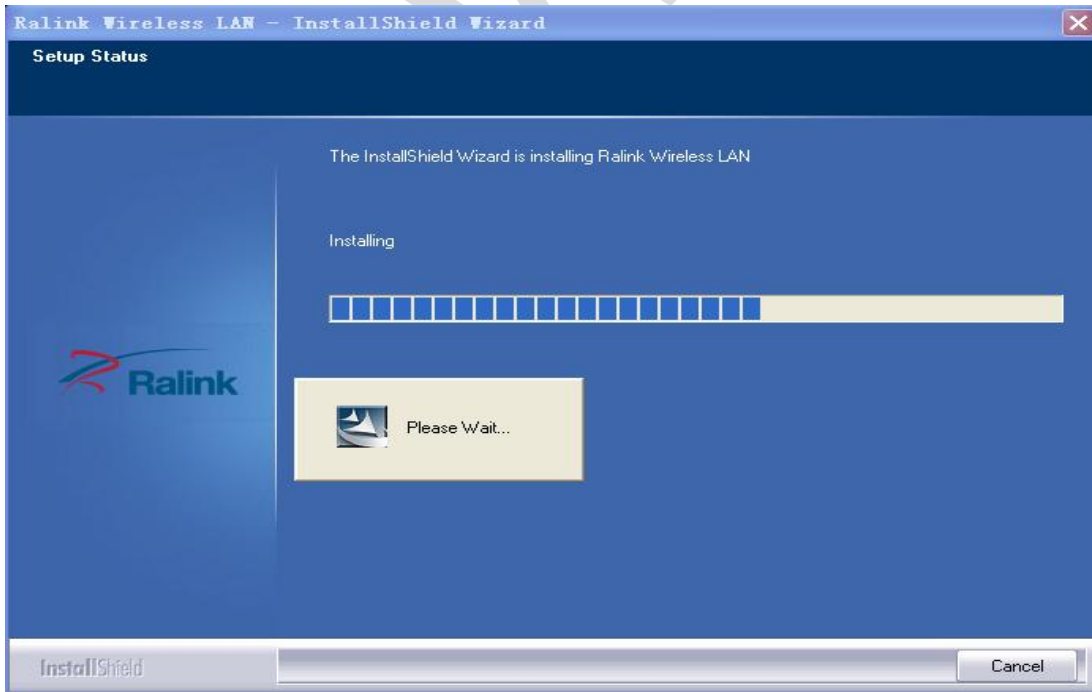
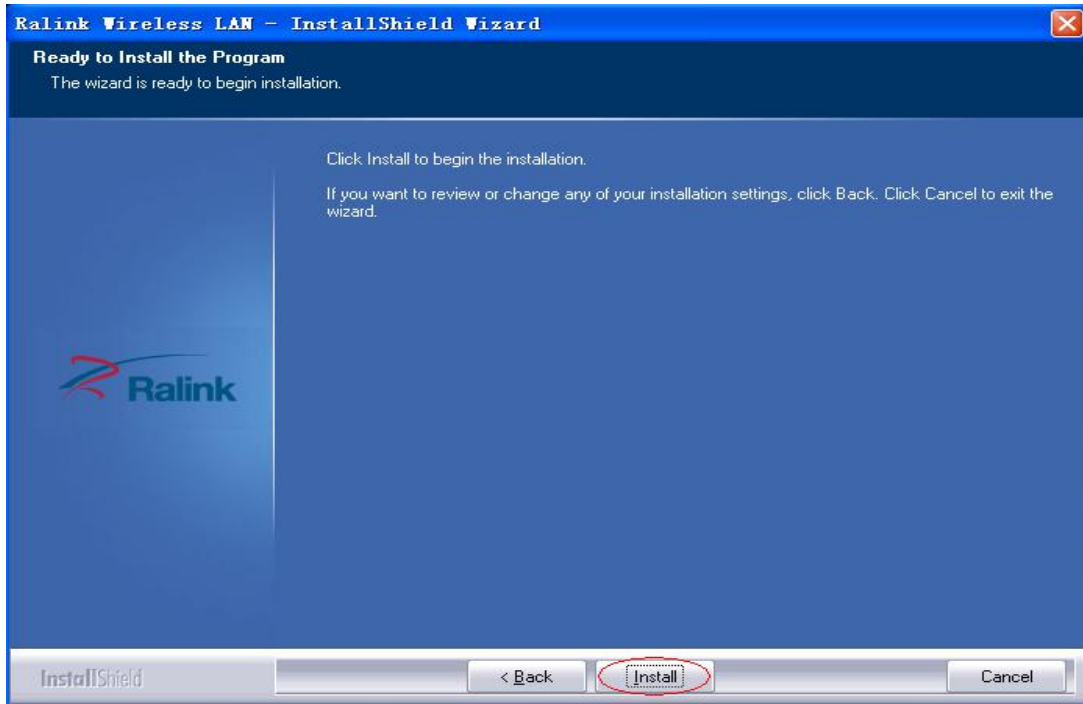
Step3 Choose **Ralink Configuration Tool** and click **next** to go on.



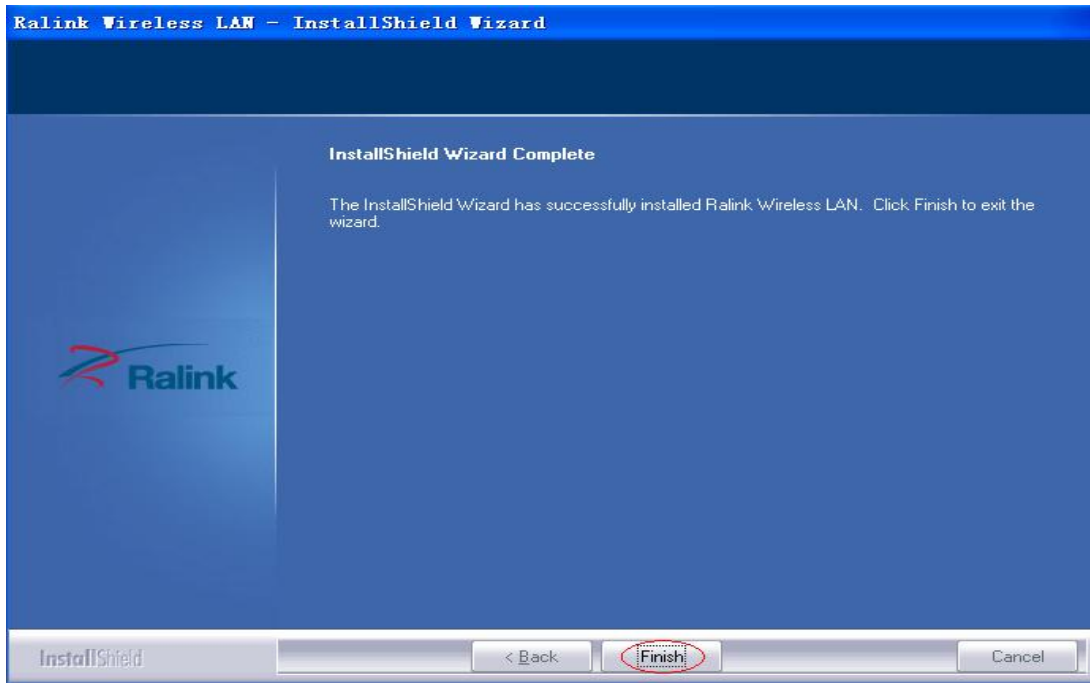
Step4 Choose **Optimize for WiFi mode** and click **next** to go on.



Step5 Click **Install** to begin the setup.

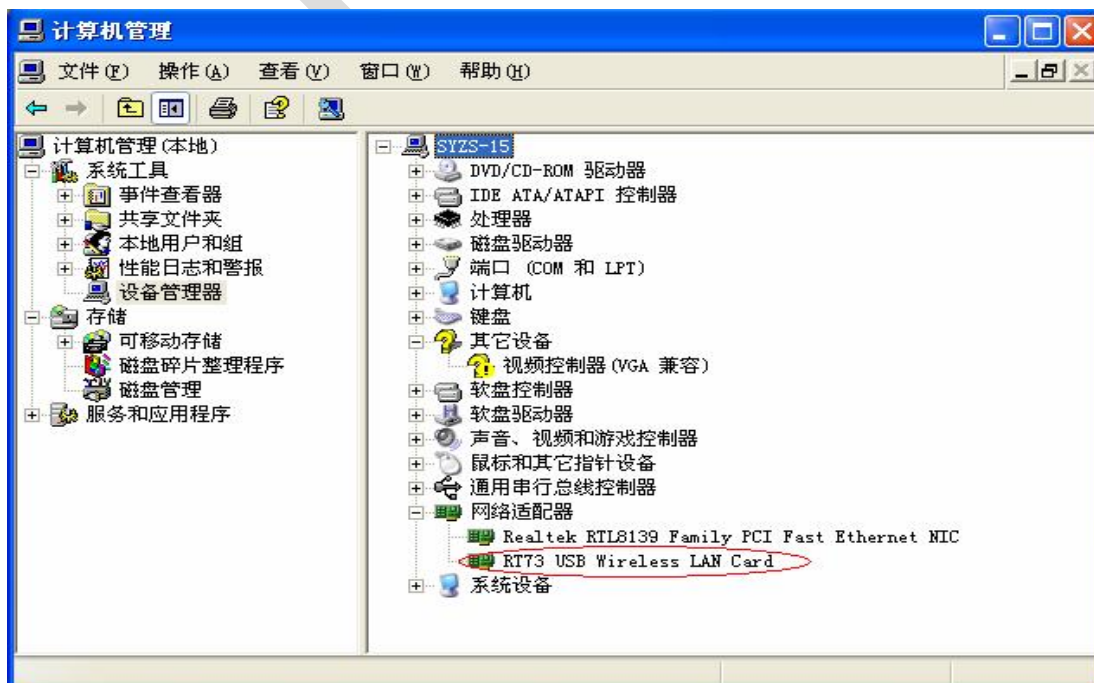


Step6 Click **Finish** to end the setup.



2. connect

Plug in your usb wireless LAN adapter, it will be recognized and auto installed. Just confirmed it like below:

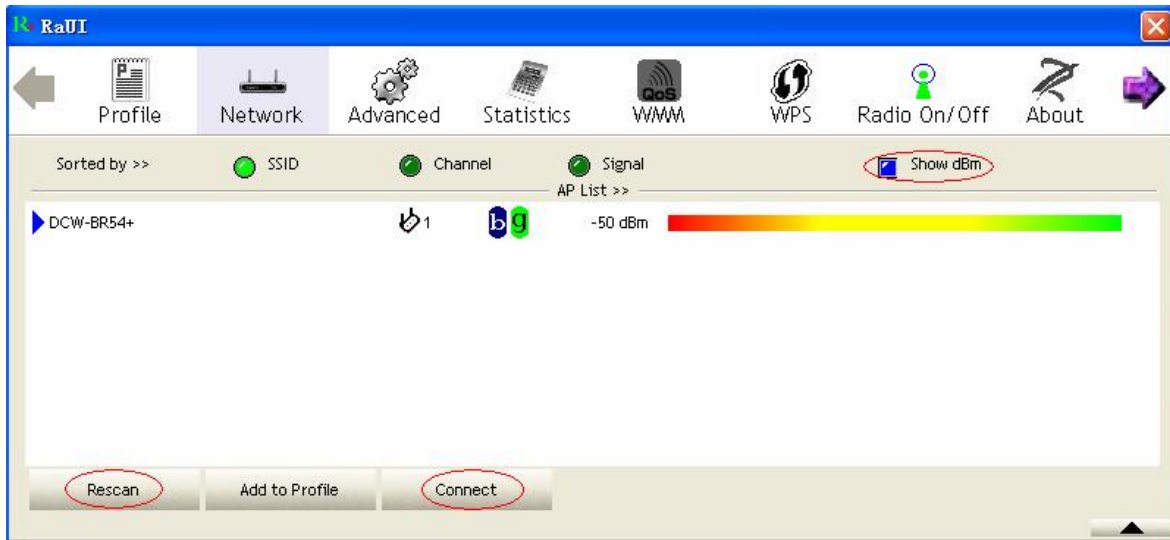


3. Make infrastructure connection

Double click the icon in red circle

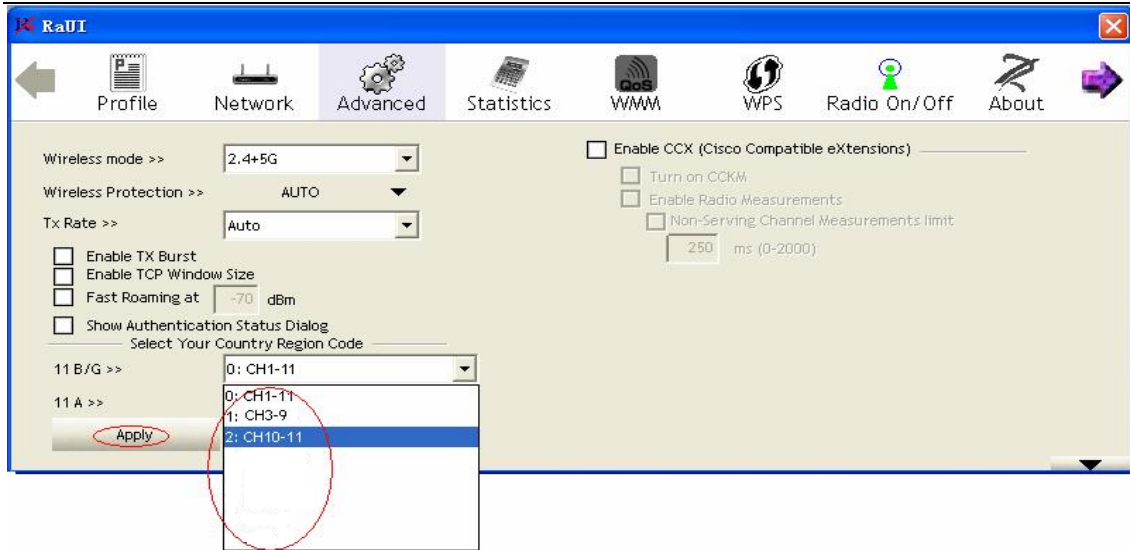


You will see:



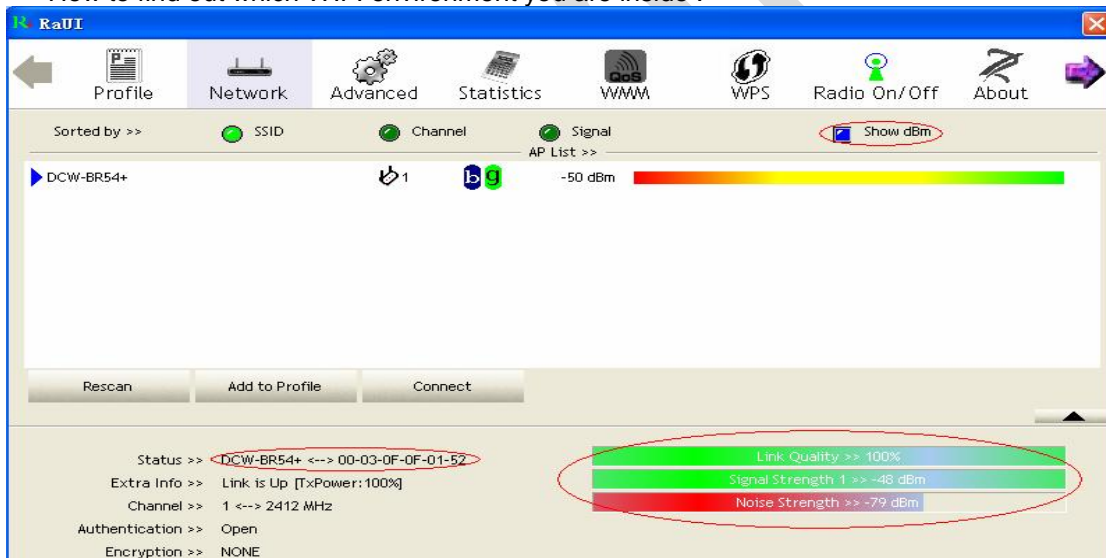
You can click the button **Rescan** to find which AP is in range, they will show on the window. Choice one you want to connect, and click the button **connect** to finish the connection. An infrastructure connection is completed.

Note: please choose correct channel setting up to your law. For example, ch13 is permitted in your country, and you set your router at ch13, while you choose ch1-ch11 (default setting), you will never find the AP. So you should have to choose ch1-ch13 in Advanced page as below.

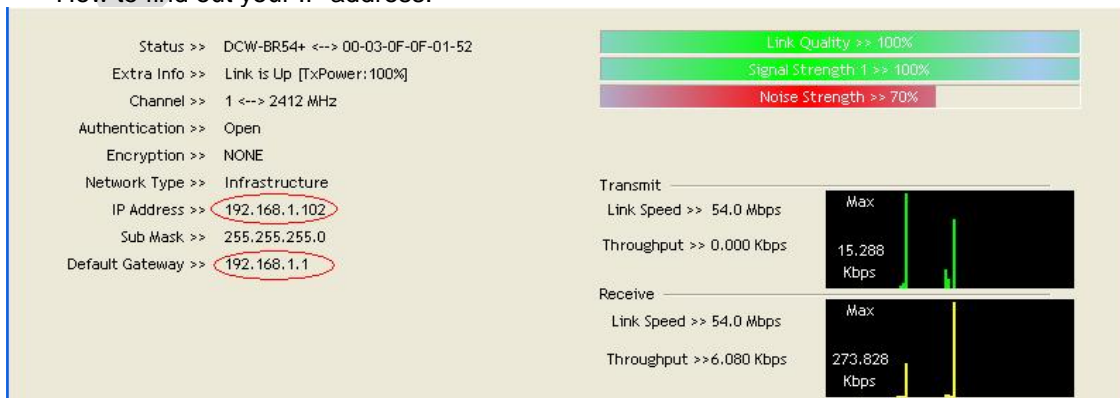


4.Help information in RaUI

How to find out which WIFI environment you are inside :



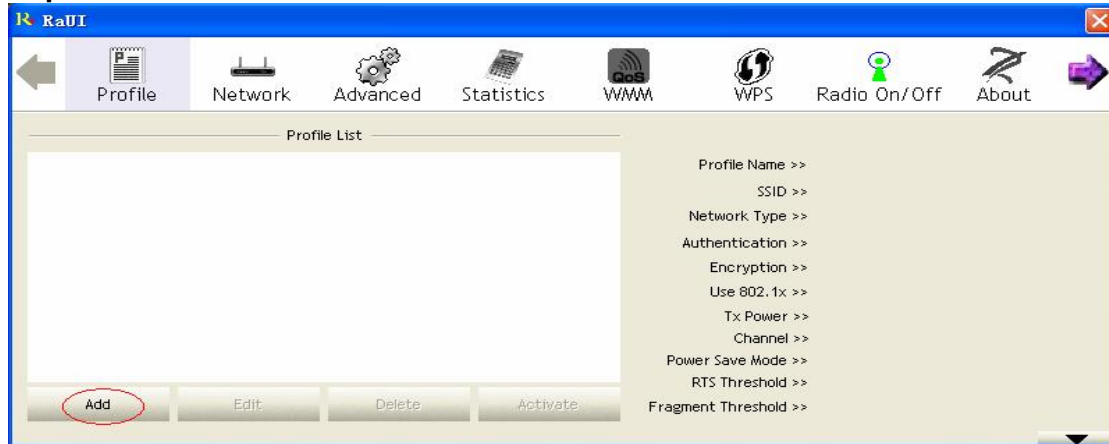
How to find out your IP address:



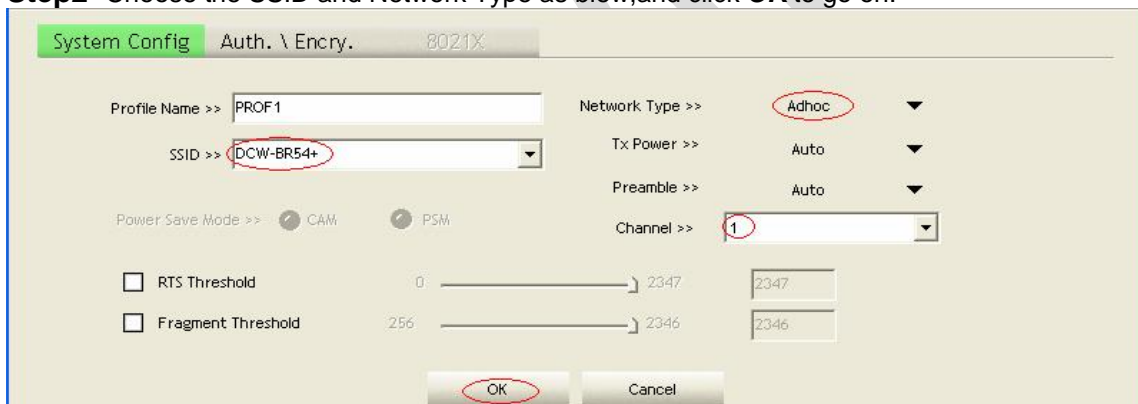
5. Make Ad-Hoc mode connection

5.1 Make an Ad-Hoc SSID

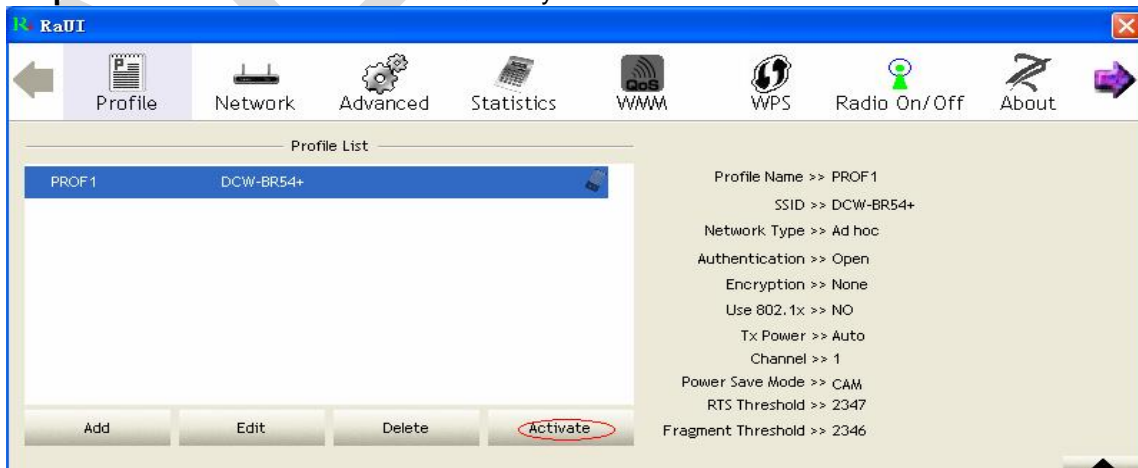
Step1 Click the button **Add** to make the Ad-Hoc SSID:



Step2 Choose the SSID and Network Type as blew, and click **OK** to go on.

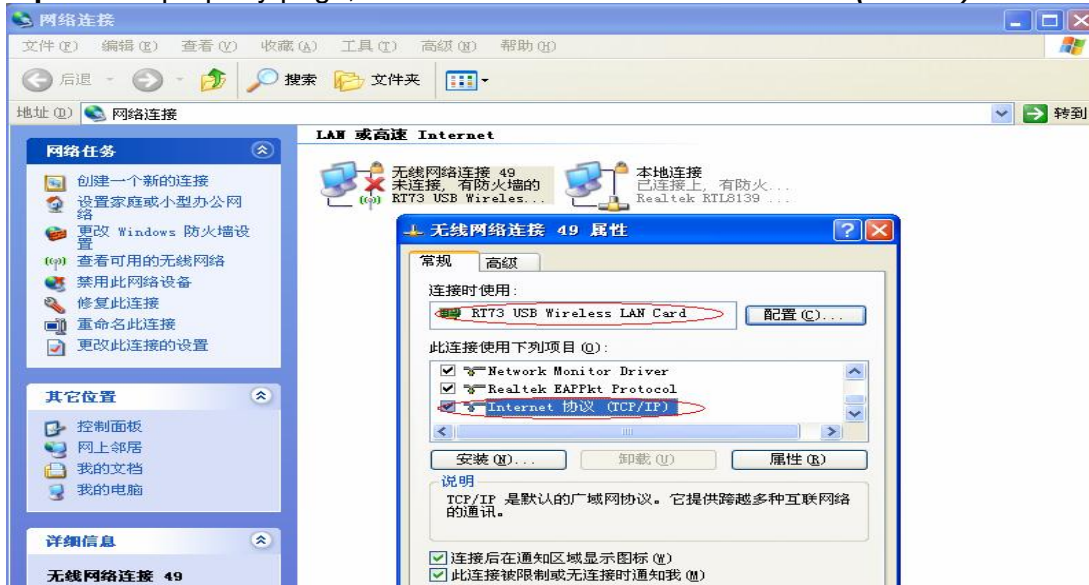


Step3 Click the **PROF1** in the window, and you can see the information of Ad-Hoc SSID.

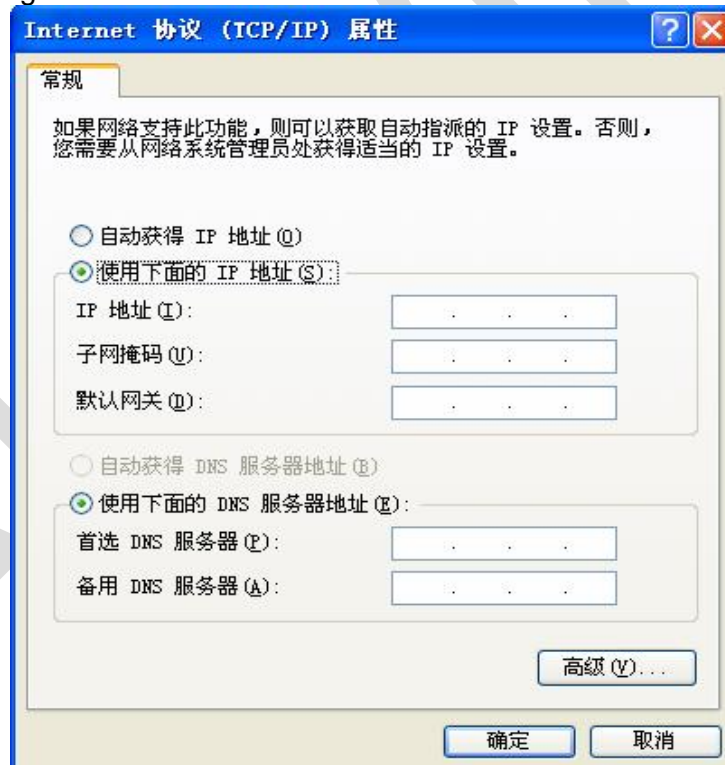


5.2 Setup static IP address for the Ad-Hoc link

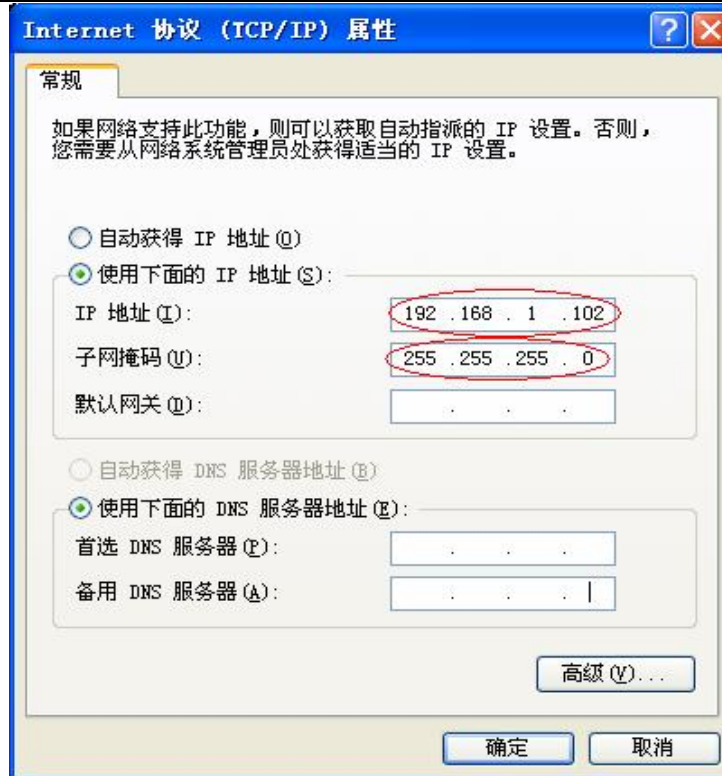
Step1 At its property page, double click item **Internet Protocol (TCP/IP)**



Step2 You will get:



Step3 Fill the IP address blank, example as below:



Step4 Click **OK** to finish the setup.



- 5.3 Ad-Hoc setup for one point completed.**
- 5.4 Setup another Ad-Hoc point as step a,b,c,d.**
- 5.5 Ad-Hoc mode link accomplished. And you can visit each other.**

Note: To make an Ad-Hoc mode link, we should choice the same channel. Its static IP address should be in the same subnet, and the SSID should be the same too.

Appendix A: Terminology

- n **ad hoc network** A network composed solely of stations within mutual communication range of each other via the wireless medium (WM).
- n **access point (AP)** Any entity that has station functionality and provides access to the distribution services, via the wireless medium (WM) for associated stations.
- n **Station (STA)** Any device that contains an IEEE 802.11 conformant medium access control (MAC) and physical layer (PHY) interface to the wireless medium (WM).
- n **RTS (Request To Send)** The frame type used to deign the RTS-CTS clearing exchange. RTS frames are used when the frame that will be transmitted is larger than the RTS threshold.
- n **CTS (Clear To Send)** The frame type used to acknowledge receipt of a Request to Send and the second component used in the RTS-CTS clearing exchange used to prevent interference from hidden nodes.
- n **WEP (Wired Equivalent Privacy)** The optional cryptographic confidentiality algorithm specified by IEEE 802.11 used to provide data confidentiality that is subjectively equivalent to the confidentiality of a wired local area network (LAN) medium that does not employ cryptographic techniques to enhance privacy.
- n **authentication** The service used to establish the identity of one station as a member of the set of stations authorized to associate with another station.
- n **WPA (Wi-Fi Protected Access)** A specification of standards-based, interoperable security enhancements that strongly increase the level of data protection and access control for existing and future wireless LAN systems.

Appendix B: Important Notices

Federal Communications Commission Interference Statement

This equipment has been tested and found to comply with the limits for a Class B digital device, pursuant to Part 15 of the FCC Rules. These limits are designed to provide reasonable protection against harmful interference in a residential installation. This equipment generates uses and can radiate radio frequency energy and, if not installed and used in accordance with the instructions, may cause harmful interference to radio communications. However, there is no guarantee that interference to radio or television reception, which can be determined by turning the equipment off and on, the user is encouraged to try to correct the interference by one of the following measures.

- Reorient or relocate the receiving antenna.
- Increase the separation between the equipment and receiver.
- Connect the equipment into an outlet on a circuit different from that to which the receiver is connected.
- Consult the dealer or an experienced radio/TV technician for help.

This device complies with Part 15 of the FCC Rules. Operation is subject to the following two conditions: (1) This device may not cause harmful interference, and (2) this device must accept any interference received, including interference that may cause undesired operation.

FCC Caution: Any changes or modifications not expressly approved by the party responsible for compliance could void the user's authority to operate this equipment.

IMPORTANT NOTE:

FCC Radiation Exposure Statement:

This equipment complies with FCC radiation exposure limits set forth for an uncontrolled environment. This equipment should be installed and operated with minimum distance 20cm between the radiator & your body.

This transmitter must not be co-located or operating in conjunction with any other antenna or transmitter.

This device is intended only for OEM integrators under the following conditions:

The antenna must be installed such that 20 cm is maintained between the antenna and users, and The transmitter module may not be co-located with any other transmitter or antenna. As long as 2 conditions above are met, further transmitter test will not be required. However, the OEM integrator is still responsible for testing their end-product for any additional compliance requirements required with this module installed (for example, digital device emissions, PC peripheral requirements, etc.).

IMPORTANT NOTE: In the event that these conditions can not be met (for example certain laptop configurations or co-location with another transmitter), then the FCC authorization is no longer considered valid and the FCC ID can not be used on the final product. In these circumstances, the OEM integrator will be responsible for re-evaluating the end product (including the transmitter) and obtaining a separate FCC authorization.

This device complies with Part 15 of the FCC Rules.

Operation is subject to the following two conditions:

(1) This device may not cause harmful interference, and (2) This device must accept any interference received including interference that may cause undesired operation.