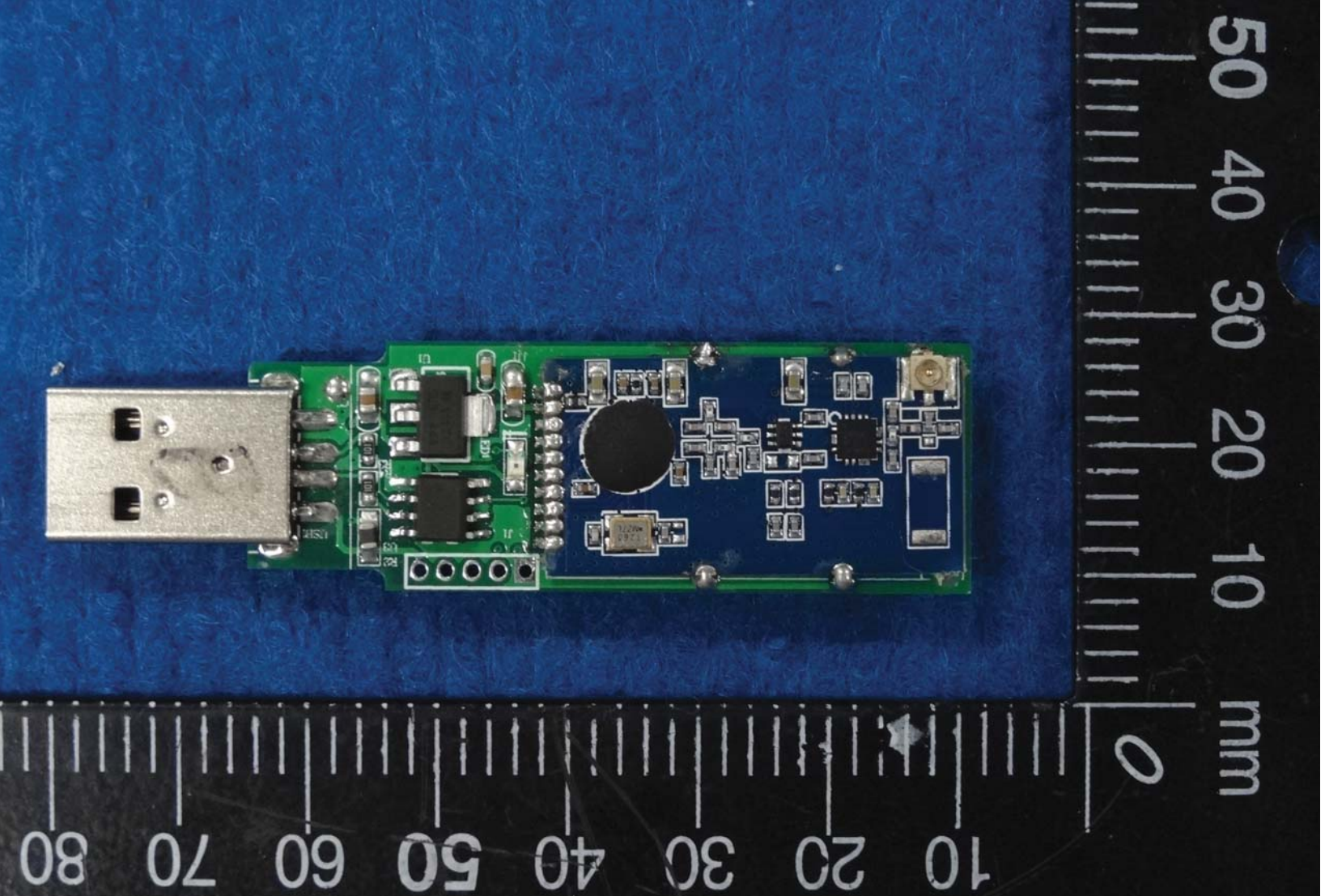




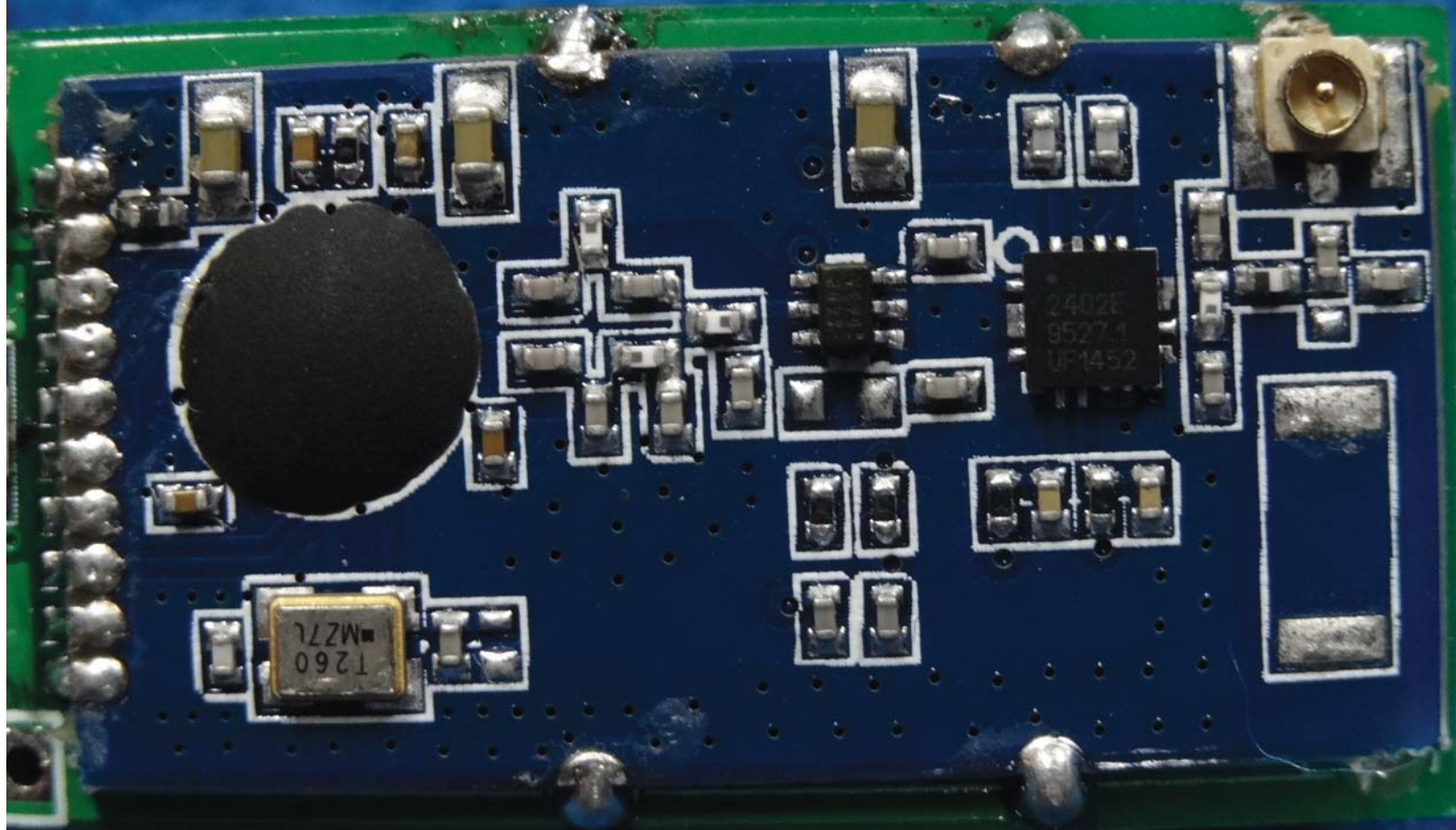
80 70 60 50 40 30 20 10 0 mm

0 10 20 30 40 0



50 40 30 20 10 mm

80 70 60 50 40 30 20 10



T260  
M27L

2402E  
85274  
UF1452

+5V DAT CLK RES GND

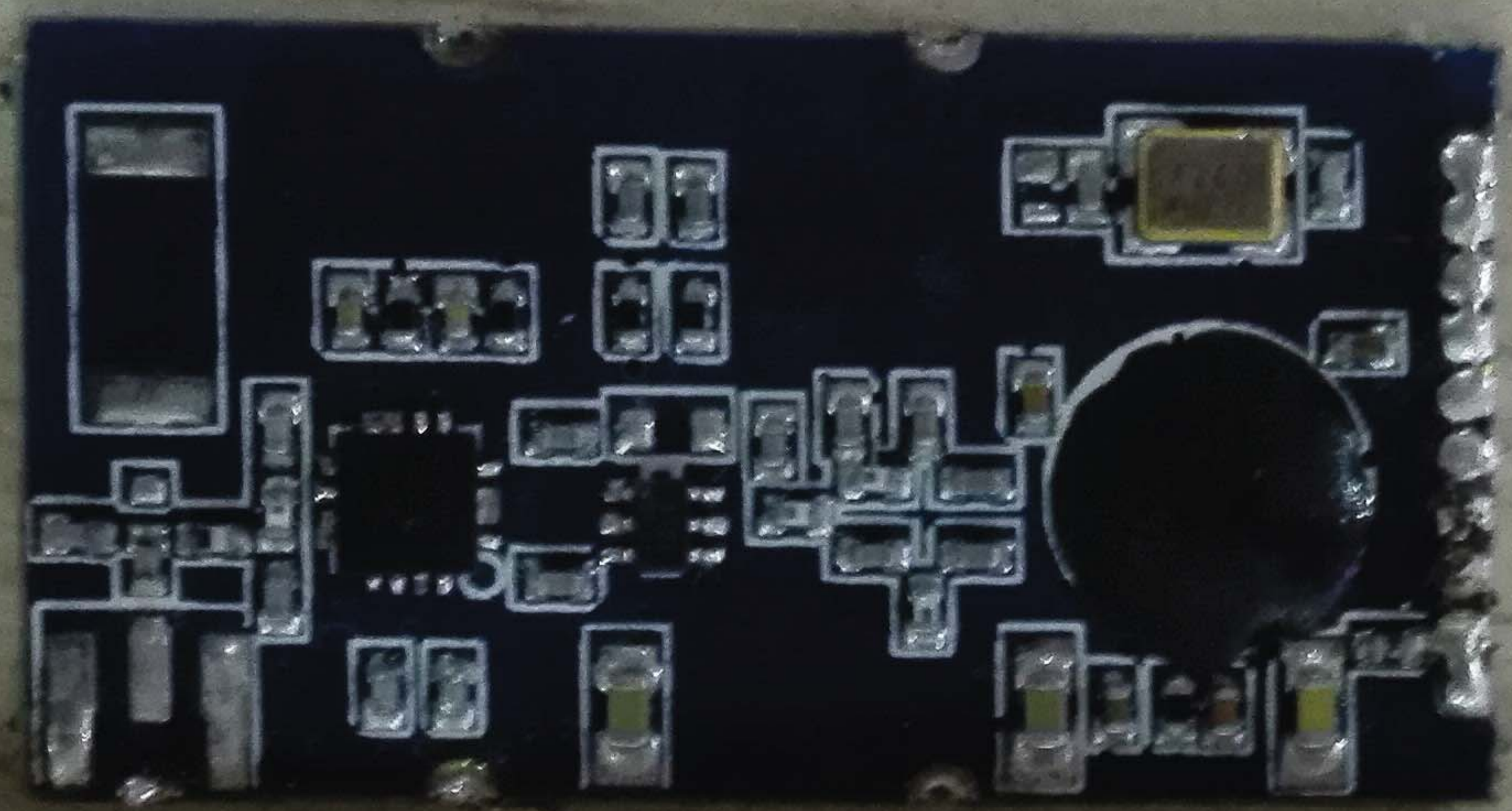
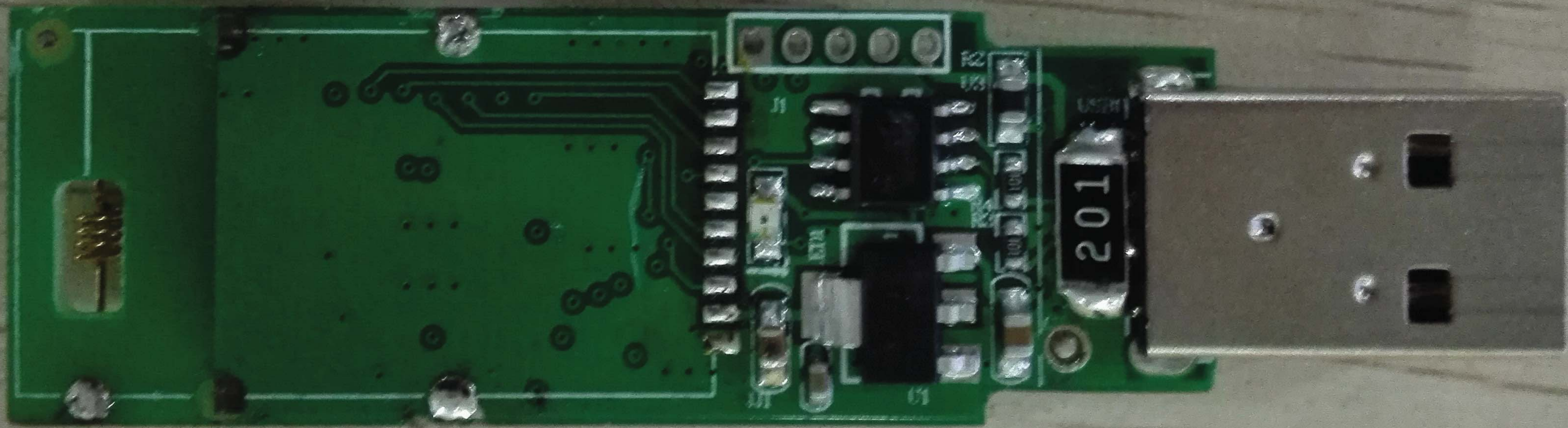
ON  
1 2 3 4 5

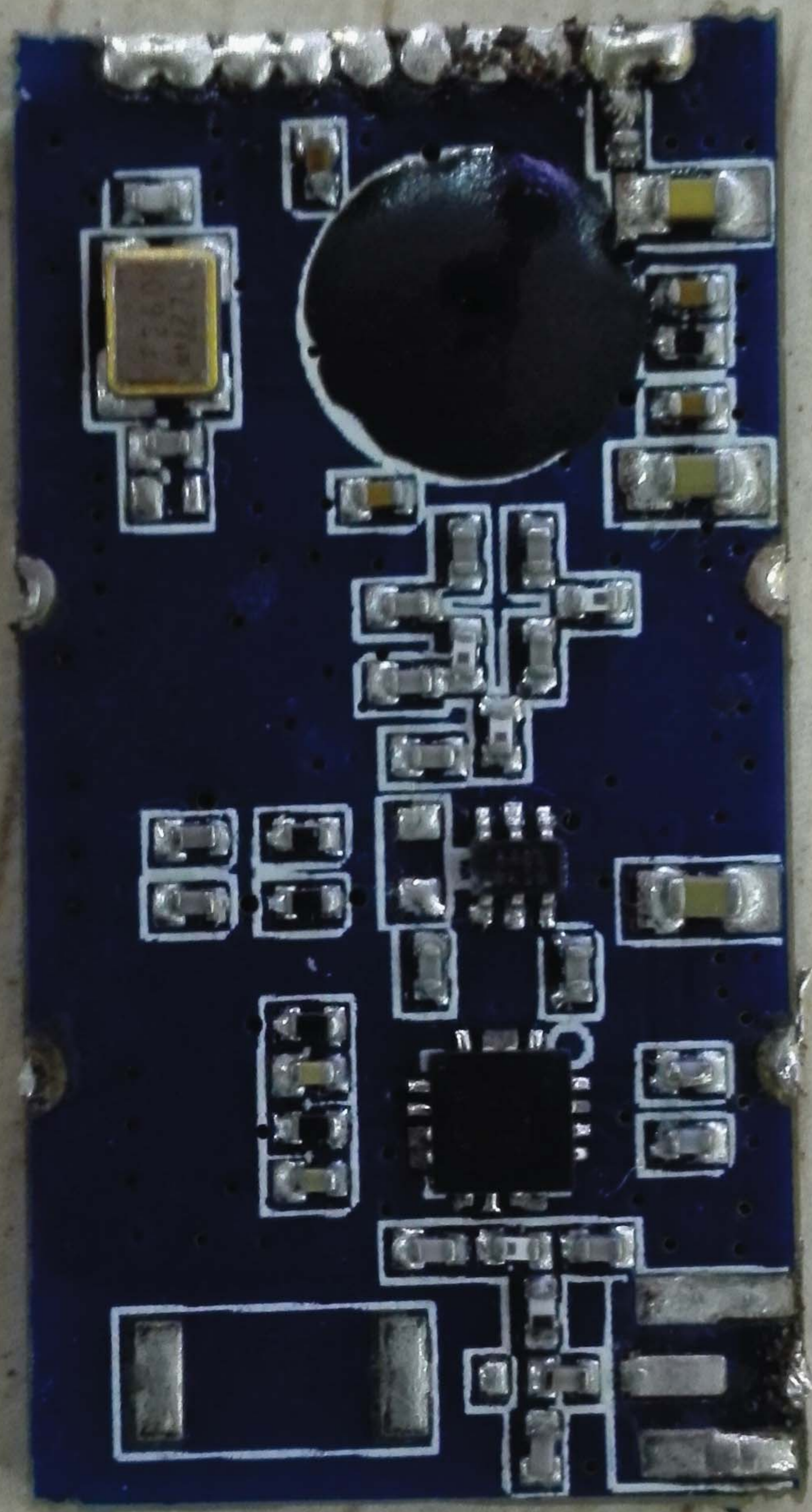
R14  
R13  
R12  
R11  
R10  
R9  
R8  
R7  
R6  
R5  
R4  
R3  
R2  
R1  
R0  
R15  
R16  
R17  
R18  
R19  
R20  
R21  
R22  
R23  
R24  
R25  
R26  
R27  
R28  
R29  
R30  
R31  
R32  
R33  
R34  
R35  
R36  
R37  
R38  
R39  
R40  
R41  
R42  
R43  
R44  
R45  
R46  
R47  
R48  
R49  
R50  
R51  
R52  
R53  
R54  
R55  
R56  
R57  
R58  
R59  
R60  
R61  
R62  
R63  
R64  
R65  
R66  
R67  
R68  
R69  
R70  
R71  
R72  
R73  
R74  
R75  
R76  
R77  
R78  
R79  
R80  
R81  
R82  
R83  
R84  
R85  
R86  
R87  
R88  
R89  
R90  
R91  
R92  
R93  
R94  
R95  
R96  
R97  
R98  
R99  
R100

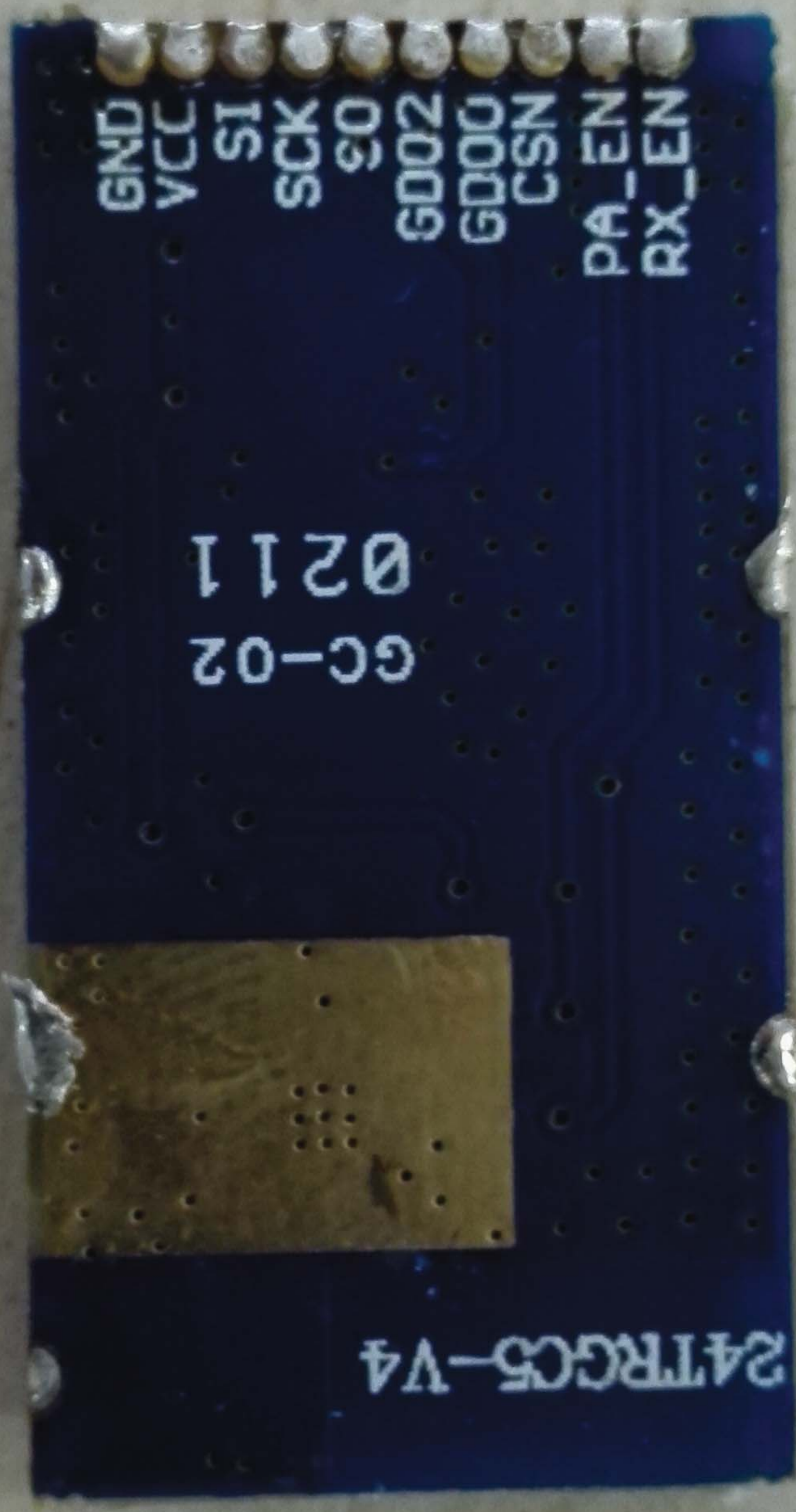
12.0000  
MHZ

CH-UFI-TC-NEW.PCB  
2015.04.16  
303000XXXX









GND  
VCC  
SI  
SCK  
SO  
GD02  
GD00  
CSN  
PA\_EN  
RX\_EN

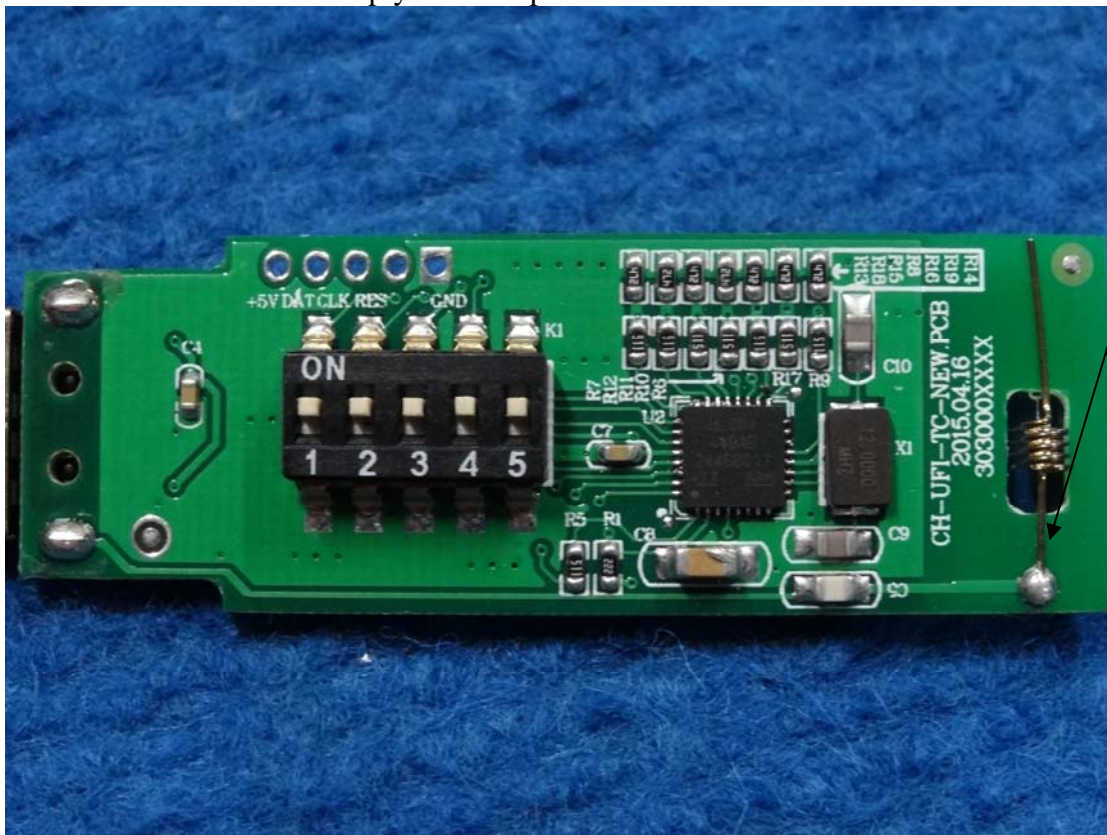
GC-02  
0211

24TRGC5-V4



## ANTENNA REQUIREMENT

The EUT use Internal spring antenn. Antenna gain is 2.0dBi .which accordance 15.203.is considered sufficient to comply with the provisions of this section.



Internal Antenna