

Measurement Conditions

DASY system configuration, as far as not given on page 1.

DASY Version	DASY5	V52.8.2
Extrapolation	Advanced Extrapolation	
Phantom	Modular Flat Phantom	
Distance Dipole Center - TSL	10 mm	with Spacer
Zoom Scan Resolution	dx, dy, dz = 5 mm	
Frequency	2450 MHz \pm 1 MHz	

Head TSL parameters

The following parameters and calculations were applied.

	Temperature	Permittivity	Conductivity
Nominal Head TSL parameters	22.0 °C	39.2	1.80 mho/m
Measured Head TSL parameters	(22.0 \pm 0.2) °C	39.9 \pm 6 %	1.84 mho/m \pm 6 %
Head TSL temperature change during test	< 0.5 °C	----	----

SAR result with Head TSL

SAR averaged over 1 cm³ (1 g) of Head TSL	Condition	
SAR measured	250 mW input power	13.2 mW / g
SAR for nominal Head TSL parameters	normalized to 1W	52.5 mW / g \pm 17.0 % (k=2)

SAR averaged over 10 cm³ (10 g) of Head TSL	condition	
SAR measured	250 mW input power	6.14 mW / g
SAR for nominal Head TSL parameters	normalized to 1W	24.5 mW / g \pm 16.5 % (k=2)

Body TSL parameters

The following parameters and calculations were applied.

	Temperature	Permittivity	Conductivity
Nominal Body TSL parameters	22.0 °C	52.7	1.95 mho/m
Measured Body TSL parameters	(22.0 \pm 0.2) °C	51.0 \pm 6 %	2.01 mho/m \pm 6 %
Body TSL temperature change during test	< 0.5 °C	----	----

SAR result with Body TSL

SAR averaged over 1 cm³ (1 g) of Body TSL	Condition	
SAR measured	250 mW input power	12.9 mW / g
SAR for nominal Body TSL parameters	normalized to 1W	50.5 mW / g \pm 17.0 % (k=2)

SAR averaged over 10 cm³ (10 g) of Body TSL	condition	
SAR measured	250 mW input power	6.03 mW / g
SAR for nominal Body TSL parameters	normalized to 1W	23.8 mW / g \pm 16.5 % (k=2)

Appendix

Antenna Parameters with Head TSL

Impedance, transformed to feed point	52.3 Ω + 7.6 j Ω
Return Loss	- 22.2 dB

Antenna Parameters with Body TSL

Impedance, transformed to feed point	48.8 Ω + 8.4 j Ω
Return Loss	- 21.3 dB

General Antenna Parameters and Design

Electrical Delay (one direction)	1.152 ns
----------------------------------	----------

After long term use with 100W radiated power, only a slight warming of the dipole near the feedpoint can be measured.

The dipole is made of standard semirigid coaxial cable. The center conductor of the feeding line is directly connected to the second arm of the dipole. The antenna is therefore short-circuited for DC-signals. On some of the dipoles, small end caps are added to the dipole arms in order to improve matching when loaded according to the position as explained in the "Measurement Conditions" paragraph. The SAR data are not affected by this change. The overall dipole length is still according to the Standard.

No excessive force must be applied to the dipole arms, because they might bend or the soldered connections near the feedpoint may be damaged.

Additional EUT Data

Manufactured by	SPEAG
Manufactured on	October 16, 2002

DASY5 Validation Report for Head TSL

Date: 13.09.2012

Test Laboratory: SPEAG, Zurich, Switzerland

DUT: Dipole 2450 MHz; Type: D2450V2; Serial: D2450V2 - SN: 722

Communication System: CW; Frequency: 2450 MHz

Medium parameters used: $f = 2450$ MHz; $\sigma = 1.84$ mho/m; $\epsilon_r = 39.9$; $\rho = 1000$ kg/m³

Phantom section: Flat Section

Measurement Standard: DASY5 (IEEE/IEC/ANSI C63.19-2007)

DASY52 Configuration:

- Probe: ES3DV3 - SN3205; ConvF(4.45, 4.45, 4.45); Calibrated: 30.12.2011;
- Sensor-Surface: 3mm (Mechanical Surface Detection)
- Electronics: DAE4 Sn601; Calibrated: 27.06.2012
- Phantom: Flat Phantom 5.0 (front); Type: QD000P50AA; Serial: 1001
- DASY52 52.8.2(969); SEMCAD X 14.6.6(6824)

Dipole Calibration for Head Tissue/Pin=250 mW, d=10mm/Zoom Scan (7x7x7)/Cube 0:

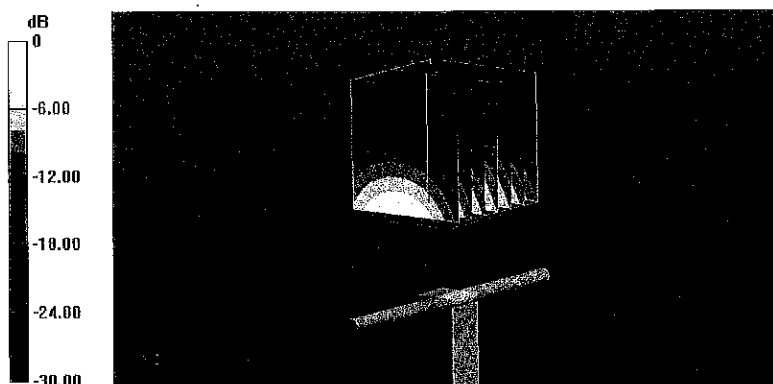
Measurement grid: dx=5mm, dy=5mm, dz=5mm

Reference Value = 98.454 V/m; Power Drift = 0.03 dB

Peak SAR (extrapolated) = 27.064 mW/g

SAR(1 g) = 13.2 mW/g; SAR(10 g) = 6.14 mW/g

Maximum value of SAR (measured) = 16.6 W/kg



0 dB = 16.6 W/kg = 24.40 dB W/kg

Impedance Measurement Plot for Head TSL

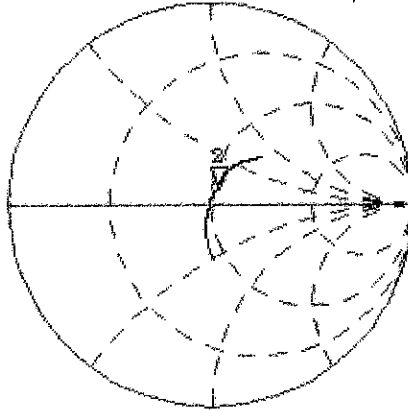
13 Sep 2012 10:23:45

CH1 S11 1 U FS

Z: 52.344 Ω 7.6426 Ω 495.47 pF

2 450.000 000 MHz

*
DeI
CA



Avg
16

H1d

CH2 S11 LOG

5 dB/REF -20 dB

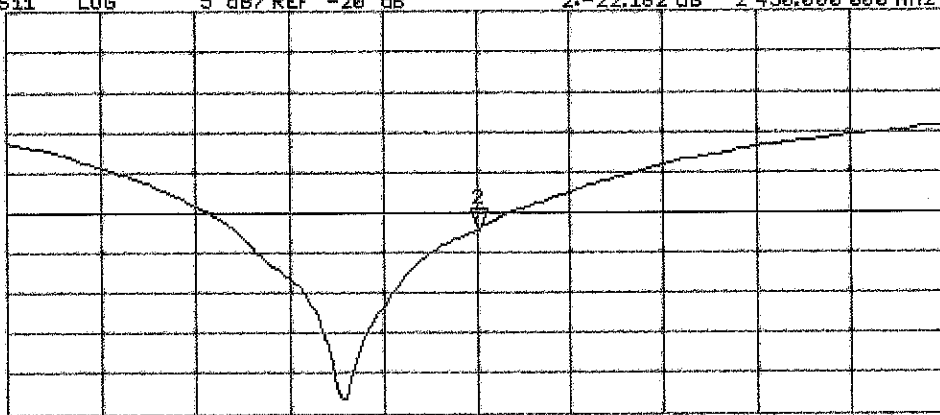
Z: -22.152 dB

2 450.000 000 MHz

CA

Avg
16

H1d



START 2 250.000 000 MHz

STOP 2 650.000 000 MHz

DASY5 Validation Report for Body TSL

Date: 13.09.2012

Test Laboratory: SPEAG, Zurich, Switzerland

DUT: Dipole 2450 MHz; Type: D2450V2; Serial: D2450V2 - SN: 722

Communication System: CW; Frequency: 2450 MHz

Medium parameters used: $f = 2450$ MHz; $\sigma = 2.01$ mho/m; $\epsilon_r = 51$; $\rho = 1000$ kg/m³

Phantom section: Flat Section

Measurement Standard: DASY5 (IEEE/IEC/ANSI C63.19-2007)

DASY52 Configuration:

- Probe: ES3DV3 - SN3205; ConvF(4.26, 4.26, 4.26); Calibrated: 30.12.2011;
- Sensor-Surface: 3mm (Mechanical Surface Detection)
- Electronics: DAE4 Sn601; Calibrated: 27.06.2012
- Phantom: Flat Phantom 5.0 (back); Type: QD000P50AA; Serial: 1002
- DASY52 52.8.2(969); SEMCAD X 14.6.6(6824)

Dipole Calibration for Body Tissue/Pin=250 mW, d=10mm/Zoom Scan (7x7x7)/Cube 0:

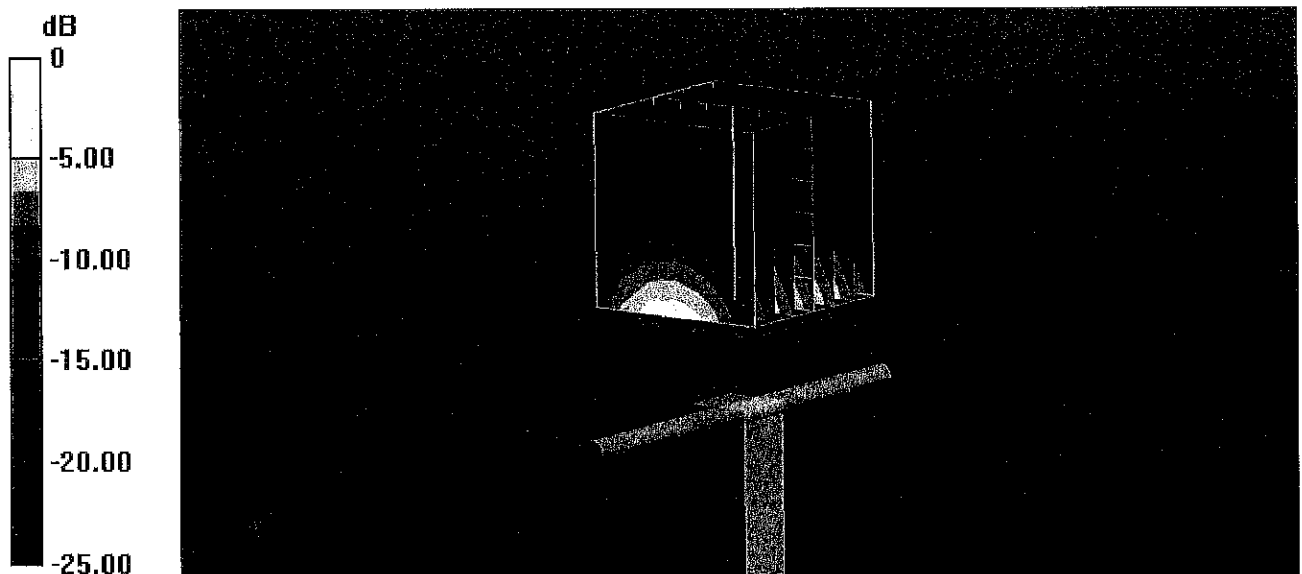
Measurement grid: dx=5mm, dy=5mm, dz=5mm

Reference Value = 94.538 V/m; Power Drift = 0.03 dB

Peak SAR (extrapolated) = 26.530 mW/g

SAR(1 g) = 12.9 mW/g; SAR(10 g) = 6.03 mW/g

Maximum value of SAR (measured) = 16.8 W/kg



0 dB = 16.8 W/kg = 24.51 dB W/kg

Impedance Measurement Plot for Body TSL

13 Sep 2012 10:23:18

CH1 S11 1 U FS

2: 48.768 Ω 8.4238 Ω 547.22 pF 2 450.000 000 MHz

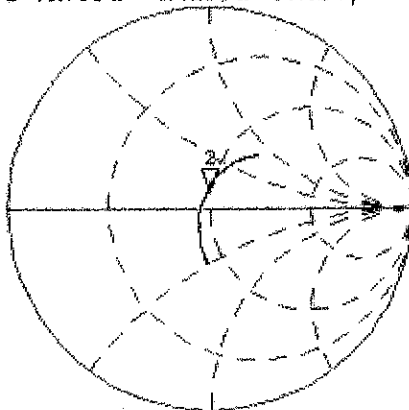
*

De1

CA

Avg
16

H1 d

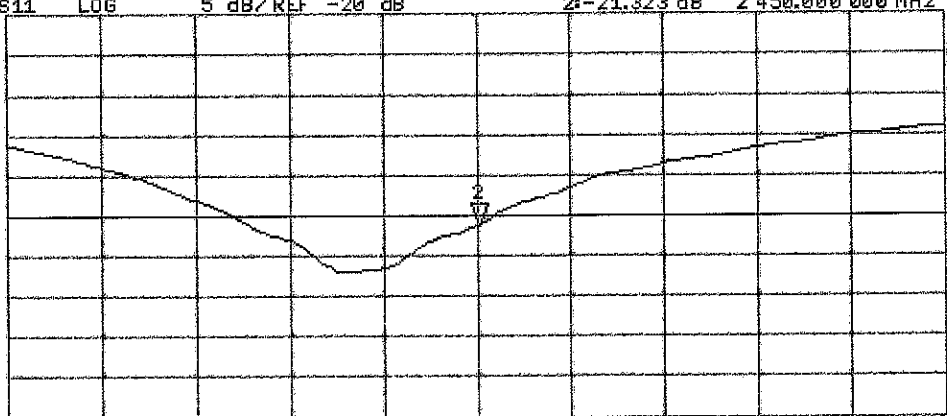


CH2 S11 LOG 5 dB/REF -20 dB 2:-21.323 dB 2 450.000 000 MHz

CA

Avg
16

H1 d



START 2 250.000 000 MHz

STOP 2 650.000 000 MHz



Accredited by the Swiss Accreditation Service (SAS)
The Swiss Accreditation Service is one of the signatories to the EA
Multilateral Agreement for the recognition of calibration certificates

Accreditation No.: **SCS 108**

Client **Eurofins**

Certificate No: **D5GHzV2-1140_Nov12**

CALIBRATION CERTIFICATE

Object **D5GHzV2 - SN: 1140**

Calibration procedure(s) **QA CAL-22.v1
Calibration procedure for dipole validation kits between 3-6 GHz**

Calibration date: **November 13, 2012**

This calibration certificate documents the traceability to national standards, which realize the physical units of measurements (SI).
The measurements and the uncertainties with confidence probability are given on the following pages and are part of the certificate.

All calibrations have been conducted in the closed laboratory facility: environment temperature (22 ± 3)°C and humidity < 70%.

Calibration Equipment used (M&TE critical for calibration)

Primary Standards	ID #	Cal Date (Certificate No.)	Scheduled Calibration
Power meter EPM-442A	GB37480704	01-Nov-12 (No. 217-01640)	Oct-13
Power sensor HP 8481A	US37292783	01-Nov-12 (No. 217-01640)	Oct-13
Reference 20 dB Attenuator	SN: 5058 (20k)	27-Mar-12 (No. 217-01530)	Apr-13
Type-N mismatch combination	SN: 5047.2 / 06327	27-Mar-12 (No. 217-01533)	Apr-13
Reference Probe EX3DV4	SN: 3503	30-Dec-11 (No. EX3-3503_Dec11)	Dec-12
DAE4	SN: 601	27-Jun-12 (No. DAE4-601_Jun12)	Jun-13
Secondary Standards	ID #	Check Date (in house)	Scheduled Check
Power sensor HP 8481A	MY41092317	18-Oct-02 (in house check Oct-11)	In house check: Oct-13
RF generator R&S SMT-06	100005	04-Aug-99 (in house check Oct-11)	In house check: Oct-13
Network Analyzer HP 8753E	US37390585 S4206	18-Oct-01 (in house check Oct-12)	In house check: Oct-13

Calibrated by: **Name** Leif Klysner **Function** Laboratory Technician

Signature

Approved by: **Name** Katja Pokovic **Function** Technical Manager

Issued: November 13, 2012

This calibration certificate shall not be reproduced except in full without written approval of the laboratory.



Accredited by the Swiss Accreditation Service (SAS)

The Swiss Accreditation Service is one of the signatories to the EA
Multilateral Agreement for the recognition of calibration certificates

Accreditation No.: **SCS 108**

Glossary:

TSL	tissue simulating liquid
ConvF	sensitivity in TSL / NORM x,y,z
N/A	not applicable or not measured

Calibration is Performed According to the Following Standards:

- IEC 62209-2, "Evaluation of Human Exposure to Radio Frequency Fields from Handheld and Body-Mounted Wireless Communication Devices in the Frequency Range of 30 MHz to 6 GHz: Human models, Instrumentation, and Procedures"; Part 2: "Procedure to determine the Specific Absorption Rate (SAR) for including accessories and multiple transmitters", March 2010
- Federal Communications Commission Office of Engineering & Technology (FCC OET), "Evaluating Compliance with FCC Guidelines for Human Exposure to Radiofrequency Electromagnetic Fields; Additional Information for Evaluating Compliance of Mobile and Portable Devices with FCC Limits for Human Exposure to Radiofrequency Emissions", Supplement C (Edition 01-01) to Bulletin 65

Additional Documentation:

- DASY4/5 System Handbook

Methods Applied and Interpretation of Parameters:

- Measurement Conditions:* Further details are available from the Validation Report at the end of the certificate. All figures stated in the certificate are valid at the frequency indicated.
- Antenna Parameters with TSL:* The dipole is mounted with the spacer to position its feed point exactly below the center marking of the flat phantom section, with the arms oriented parallel to the body axis.
- Feed Point Impedance and Return Loss:* These parameters are measured with the dipole positioned under the liquid filled phantom. The impedance stated is transformed from the measurement at the SMA connector to the feed point. The Return Loss ensures low reflected power. No uncertainty required.
- Electrical Delay:* One-way delay between the SMA connector and the antenna feed point. No uncertainty required.
- SAR measured:* SAR measured at the stated antenna input power.
- SAR normalized:* SAR as measured, normalized to an input power of 1 W at the antenna connector.
- SAR for nominal TSL parameters:* The measured TSL parameters are used to calculate the nominal SAR result.

The reported uncertainty of measurement is stated as the standard uncertainty of measurement multiplied by the coverage factor $k=2$, which for a normal distribution corresponds to a coverage probability of approximately 95%.

Measurement Conditions

DASY system configuration, as far as not given on page 1.

DASY Version	DASY5	V52.8.3
Extrapolation	Advanced Extrapolation	
Phantom	Modular Flat Phantom V5.0	
Distance Dipole Center - TSL	10 mm	with Spacer
Zoom Scan Resolution	dx, dy = 4.0 mm, dz = 1.4 mm	Graded Ratio = 1.4 (Z direction)
Frequency	5200 MHz ± 1 MHz 5500 MHz ± 1 MHz 5800 MHz ± 1 MHz	

Head TSL parameters at 5200 MHz

The following parameters and calculations were applied.

	Temperature	Permittivity	Conductivity
Nominal Head TSL parameters	22.0 °C	36.0	4.66 mho/m
Measured Head TSL parameters	(22.0 ± 0.2) °C	34.8 ± 6 %	4.53 mho/m ± 6 %
Head TSL temperature change during test	< 0.5 °C	----	----

SAR result with Head TSL at 5200 MHz

SAR averaged over 1 cm³ (1 g) of Head TSL	Condition	
SAR measured	100 mW input power	7.99 W/kg
SAR for nominal Head TSL parameters	normalized to 1W	79.3 W/kg ± 19.9 % (k=2)

SAR averaged over 10 cm³ (10 g) of Head TSL	condition	
SAR measured	100 mW input power	2.28 W/kg
SAR for nominal Head TSL parameters	normalized to 1W	22.6 W/kg ± 19.5 % (k=2)

Head TSL parameters at 5500 MHz

The following parameters and calculations were applied.

	Temperature	Permittivity	Conductivity
Nominal Head TSL parameters	22.0 °C	35.6	4.96 mho/m
Measured Head TSL parameters	(22.0 ± 0.2) °C	34.4 ± 6 %	4.83 mho/m ± 6 %
Head TSL temperature change during test	< 0.5 °C	----	----

SAR result with Head TSL at 5500 MHz

SAR averaged over 1 cm³ (1 g) of Head TSL	Condition	
SAR measured	100 mW input power	8.46 W/kg
SAR for nominal Head TSL parameters	normalized to 1W	83.9 W / kg ± 19.9 % (k=2)

SAR averaged over 10 cm³ (10 g) of Head TSL	condition	
SAR measured	100 mW input power	2.40 W/kg
SAR for nominal Head TSL parameters	normalized to 1W	23.7 W/kg ± 19.5 % (k=2)

Head TSL parameters at 5800 MHz

The following parameters and calculations were applied.

	Temperature	Permittivity	Conductivity
Nominal Head TSL parameters	22.0 °C	35.3	5.27 mho/m
Measured Head TSL parameters	(22.0 ± 0.2) °C	34.0 ± 6 %	5.15 mho/m ± 6 %
Head TSL temperature change during test	< 0.5 °C	----	----

SAR result with Head TSL at 5800 MHz

SAR averaged over 1 cm ³ (1 g) of Head TSL	Condition	
SAR measured	100 mW input power	7.83 W/kg
SAR for nominal Head TSL parameters	normalized to 1W	77.6 W/kg ± 19.9 % (k=2)

SAR averaged over 10 cm ³ (10 g) of Head TSL	condition	
SAR measured	100 mW input power	2.23 W/kg
SAR for nominal Head TSL parameters	normalized to 1W	22.1 W/kg ± 19.5 % (k=2)

Body TSL parameters at 5200 MHz

The following parameters and calculations were applied.

	Temperature	Permittivity	Conductivity
Nominal Body TSL parameters	22.0 °C	49.0	5.30 mho/m
Measured Body TSL parameters	(22.0 ± 0.2) °C	46.8 ± 6 %	5.35 mho/m ± 6 %
Body TSL temperature change during test	< 0.5 °C	----	----

SAR result with Body TSL at 5200 MHz

SAR averaged over 1 cm³ (1 g) of Body TSL	Condition	
SAR measured	100 mW input power	7.42 W/kg
SAR for nominal Body TSL parameters	normalized to 1W	73.5 W/kg ± 19.9 % (k=2)

SAR averaged over 10 cm³ (10 g) of Body TSL	condition	
SAR measured	100 mW input power	2.08 W/kg
SAR for nominal Body TSL parameters	normalized to 1W	20.6 W/kg ± 19.5 % (k=2)

Body TSL parameters at 5500 MHz

The following parameters and calculations were applied.

	Temperature	Permittivity	Conductivity
Nominal Body TSL parameters	22.0 °C	48.6	5.65 mho/m
Measured Body TSL parameters	(22.0 ± 0.2) °C	46.3 ± 6 %	5.73 mho/m ± 6 %
Body TSL temperature change during test	< 0.5 °C	----	----

SAR result with Body TSL at 5500 MHz

SAR averaged over 1 cm³ (1 g) of Body TSL	Condition	
SAR measured	100 mW input power	7.97 W/kg
SAR for nominal Body TSL parameters	normalized to 1W	79.0 W/kg ± 19.9 % (k=2)

SAR averaged over 10 cm³ (10 g) of Body TSL	condition	
SAR measured	100 mW input power	2.22 W/kg
SAR for nominal Body TSL parameters	normalized to 1W	21.9 W/kg ± 19.5 % (k=2)

Body TSL parameters at 5800 MHz

The following parameters and calculations were applied.

	Temperature	Permittivity	Conductivity
Nominal Body TSL parameters	22.0 °C	48.2	6.00 mho/m
Measured Body TSL parameters	(22.0 ± 0.2) °C	45.9 ± 6 %	6.13 mho/m ± 6 %
Body TSL temperature change during test	< 0.5 °C	----	----

SAR result with Body TSL at 5800 MHz

SAR averaged over 1 cm ³ (1 g) of Body TSL	Condition	
SAR measured	100 mW input power	7.43 W/kg
SAR for nominal Body TSL parameters	normalized to 1W	73.6 W/kg ± 19.9 % (k=2)

SAR averaged over 10 cm ³ (10 g) of Body TSL	condition	
SAR measured	100 mW input power	2.07 W/kg
SAR for nominal Body TSL parameters	normalized to 1W	20.4 W/kg ± 19.5 % (k=2)

Appendix

Antenna Parameters with Head TSL at 5200 MHz

Impedance, transformed to feed point	48.6 Ω - 7.5 j Ω
Return Loss	- 22.2 dB

Antenna Parameters with Head TSL at 5500 MHz

Impedance, transformed to feed point	53.3 Ω - 0.6 j Ω
Return Loss	- 29.8 dB

Antenna Parameters with Head TSL at 5800 MHz

Impedance, transformed to feed point	56.6 Ω - 1.8 j Ω
Return Loss	- 23.8 dB

Antenna Parameters with Body TSL at 5200 MHz

Impedance, transformed to feed point	48.6 Ω - 6.9 j Ω
Return Loss	- 22.9 dB

Antenna Parameters with Body TSL at 5500 MHz

Impedance, transformed to feed point	54.2 Ω + 0.6 j Ω
Return Loss	- 27.7 dB

Antenna Parameters with Body TSL at 5800 MHz

Impedance, transformed to feed point	57.4 Ω - 1.2 j Ω
Return Loss	- 23.1 dB

General Antenna Parameters and Design

Electrical Delay (one direction)	1.202 ns
----------------------------------	----------

After long term use with 100W radiated power, only a slight warming of the dipole near the feedpoint can be measured.

The dipole is made of standard semirigid coaxial cable. The center conductor of the feeding line is directly connected to the second arm of the dipole. The antenna is therefore short-circuited for DC-signals. On some of the dipoles, small end caps are added to the dipole arms in order to improve matching when loaded according to the position as explained in the "Measurement Conditions" paragraph. The SAR data are not affected by this change. The overall dipole length is still according to the Standard.

No excessive force must be applied to the dipole arms, because they might bend or the soldered connections near the feedpoint may be damaged.

Additional EUT Data

Manufactured by	SPEAG
Manufactured on	May 07, 2012

Test Laboratory: SPEAG, Zurich, Switzerland

DUT: Dipole 5GHz; Type: D5GHzV2; Serial: D5GHzV2 - SN: 1140

Communication System: CW; Frequency: 5200 MHz, Frequency: 5500 MHz, Frequency: 5800 MHz
Medium parameters used: $f = 5200$ MHz; $\sigma = 4.53$ mho/m; $\epsilon_r = 34.8$; $\rho = 1000$ kg/m³, Medium parameters used: $f = 5500$ MHz; $\sigma = 4.83$ mho/m; $\epsilon_r = 34.4$; $\rho = 1000$ kg/m³, Medium parameters used: $f = 5800$ MHz; $\sigma = 5.15$ mho/m; $\epsilon_r = 34$; $\rho = 1000$ kg/m³

Phantom section: Flat Section

Measurement Standard: DASY5 (IEEE/IEC/ANSI C63.19-2007)

DASY52 Configuration:

- Probe: EX3DV4 - SN3503; ConvF(5.41, 5.41, 5.41); Calibrated: 30.12.2011, ConvF(4.91, 4.91, 4.91); Calibrated: 30.12.2011, ConvF(4.81, 4.81, 4.81); Calibrated: 30.12.2011;
- Sensor-Surface: 1.4mm (Mechanical Surface Detection)
- Electronics: DAE4 Sn601; Calibrated: 27.06.2012
- Phantom: Flat Phantom 5.0 (front); Type: QD000P50AA; Serial: 1001
- DASY52 52.8.3(988); SEMCAD X 14.6.7(6848)

Dipole Calibration for Head Tissue/Pin=100mW, dist=10mm, f=5200 MHz/Zoom Scan, dist=1.4mm (8x8x7)/Cube 0: Measurement grid: dx=4mm, dy=4mm, dz=1.4mm

Reference Value = 62.376 V/m; Power Drift = 0.04 dB

Peak SAR (extrapolated) = 29.2 W/kg

SAR(1 g) = 7.99 W/kg; SAR(10 g) = 2.28 W/kg

Maximum value of SAR (measured) = 18.0 W/kg

Dipole Calibration for Head Tissue/Pin=100mW, dist=10mm, f=5500 MHz/Zoom Scan, dist=1.4mm (8x8x7)/Cube 0: Measurement grid: dx=4mm, dy=4mm, dz=1.4mm

Reference Value = 62.330 V/m; Power Drift = 0.04 dB

Peak SAR (extrapolated) = 33.1 W/kg

SAR(1 g) = 8.46 W/kg; SAR(10 g) = 2.4 W/kg

Maximum value of SAR (measured) = 19.7 W/kg

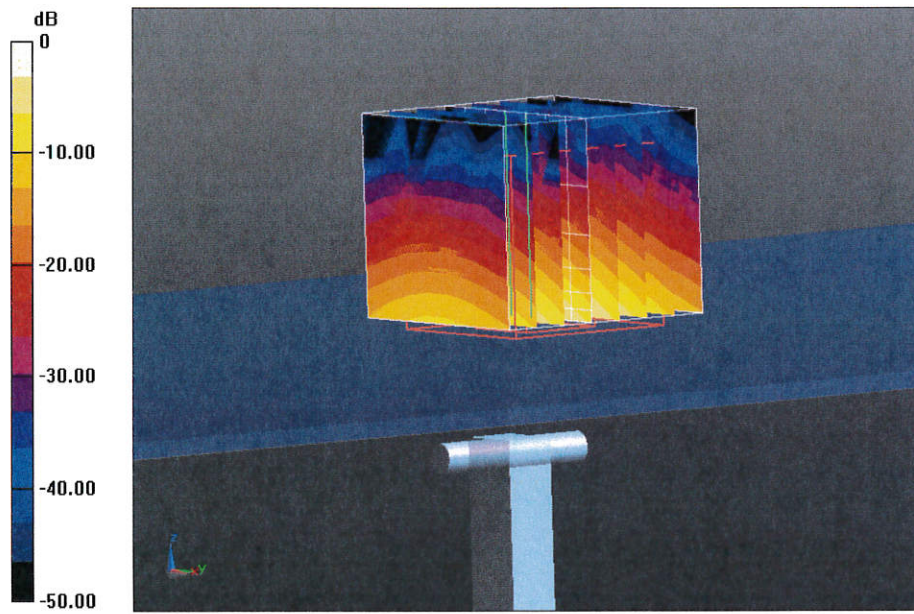
Dipole Calibration for Head Tissue/Pin=100mW, dist=10mm, f=5800 MHz/Zoom Scan, dist=1.4mm (8x8x7)/Cube 0: Measurement grid: dx=4mm, dy=4mm, dz=1.4mm

Reference Value = 59.000 V/m; Power Drift = 0.04 dB

Peak SAR (extrapolated) = 32.2 W/kg

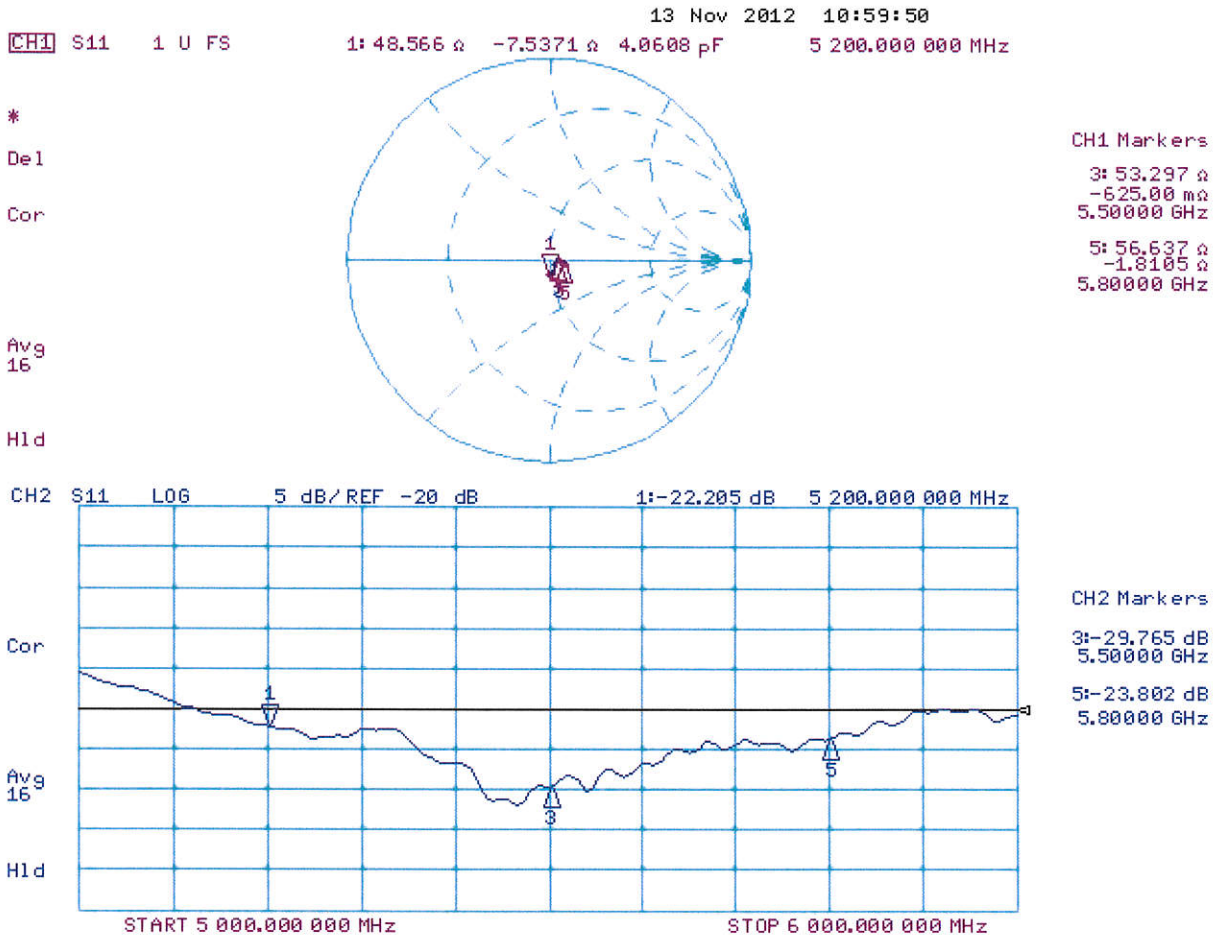
SAR(1 g) = 7.83 W/kg; SAR(10 g) = 2.23 W/kg

Maximum value of SAR (measured) = 18.6 W/kg



0 dB = 18.6 W/kg = 12.70 dBW/kg

Impedance Measurement Plot for Head TSL



DASY5 Validation Report for Body TSL

Date: 12.11.2012

Test Laboratory: SPEAG, Zurich, Switzerland

DUT: Dipole 5GHz; Type: D5GHzV2; Serial: D5GHzV2 - SN: 1140

Communication System: CW; Frequency: 5200 MHz, Frequency: 5500 MHz, Frequency: 5800 MHz
Medium parameters used: $f = 5200$ MHz; $\sigma = 5.35$ mho/m; $\epsilon_r = 46.8$; $\rho = 1000$ kg/m³, Medium parameters used: $f = 5500$ MHz; $\sigma = 5.73$ mho/m; $\epsilon_r = 46.3$; $\rho = 1000$ kg/m³, Medium parameters used: $f = 5800$ MHz; $\sigma = 6.13$ mho/m; $\epsilon_r = 45.9$; $\rho = 1000$ kg/m³

Phantom section: Flat Section

Measurement Standard: DASY5 (IEEE/IEC/ANSI C63.19-2007)

DASY52 Configuration:

- Probe: EX3DV4 - SN3503; ConvF(4.91, 4.91, 4.91); Calibrated: 30.12.2011, ConvF(4.43, 4.43, 4.43); Calibrated: 30.12.2011, ConvF(4.38, 4.38, 4.38); Calibrated: 30.12.2011;
- Sensor-Surface: 1.4mm (Mechanical Surface Detection)
- Electronics: DAE4 Sn601; Calibrated: 27.06.2012
- Phantom: Flat Phantom 5.0 (back); Type: QD000P50AA; Serial: 1002
- DASY52 52.8.3(988); SEMCAD X 14.6.7(6848)

Dipole Calibration for Body Tissue/Pin=100mW, dist=10mm, f=5200 MHz/Zoom Scan, dist=1.4mm (8x8x7)/Cube 0: Measurement grid: dx=4mm, dy=4mm, dz=1.4mm

Reference Value = 58.434 V/m; Power Drift = -0.01 dB

Peak SAR (extrapolated) = 29.5 W/kg

SAR(1 g) = 7.42 W/kg; SAR(10 g) = 2.08 W/kg

Maximum value of SAR (measured) = 17.7 W/kg

Dipole Calibration for Body Tissue/Pin=100mW, dist=10mm, f=5500 MHz/Zoom Scan, dist=1.4mm (8x8x7)/Cube 0: Measurement grid: dx=4mm, dy=4mm, dz=1.4mm

Reference Value = 59.004 V/m; Power Drift = -0.01 dB

Peak SAR (extrapolated) = 34.8 W/kg

SAR(1 g) = 7.97 W/kg; SAR(10 g) = 2.22 W/kg

Maximum value of SAR (measured) = 19.8 W/kg

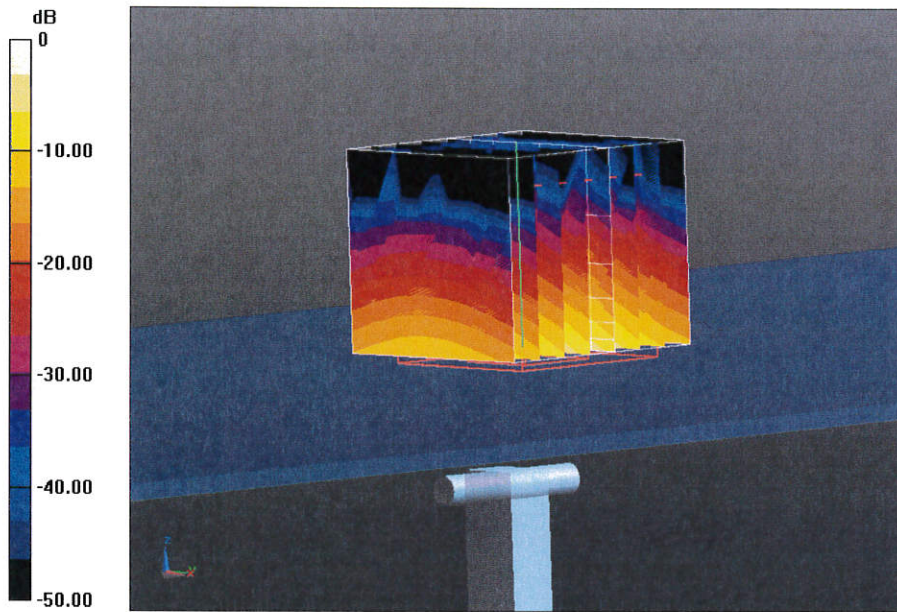
Dipole Calibration for Body Tissue/Pin=100mW, dist=10mm, f=5800 MHz/Zoom Scan, dist=1.4mm (8x8x7)/Cube 0: Measurement grid: dx=4mm, dy=4mm, dz=1.4mm

Reference Value = 54.978 V/m; Power Drift = -0.01 dB

Peak SAR (extrapolated) = 34.8 W/kg

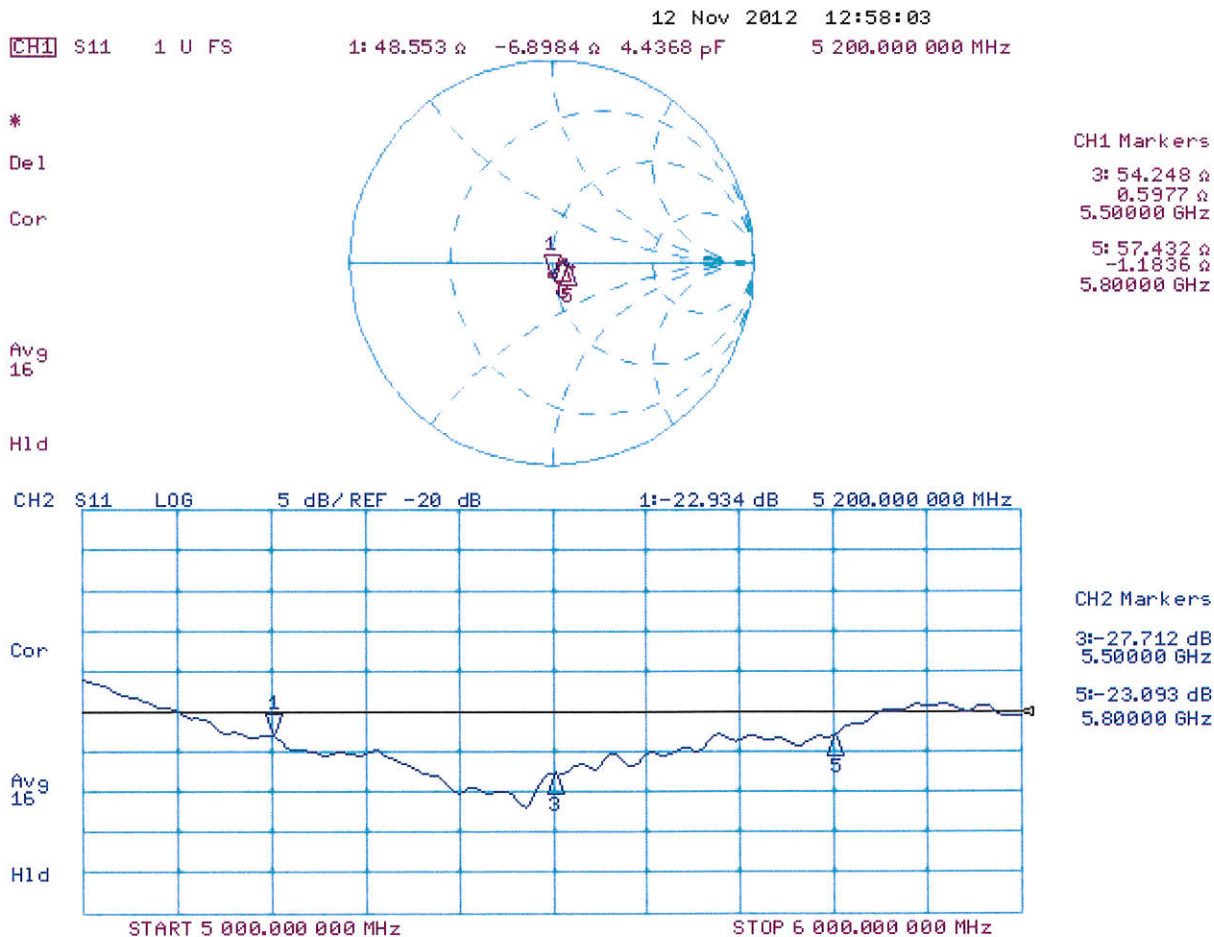
SAR(1 g) = 7.43 W/kg; SAR(10 g) = 2.07 W/kg

Maximum value of SAR (measured) = 18.7 W/kg



0 dB = 18.7 W/kg = 12.72 dBW/kg

Impedance Measurement Plot for Body TSL



ANNEX B System Validation Reports

Test Laboratory: Eurofins Product Service GmbH

Dipol Valid.2450 (m)_250mW 10.01.2013

DUT: Dipole 2450 MHz; Type: D2450V2; Serial: 722

Communication System: CW; Frequency: 2450 MHz; Duty Cycle: 1:1
Medium: Muscle 2450 MHz Medium parameters used: $f = 2450$ MHz; $\sigma = 2.002$ mho/m; $\epsilon_r = 52.935$; $\rho = 1000$ kg/m³
Phantom section: Flat Section

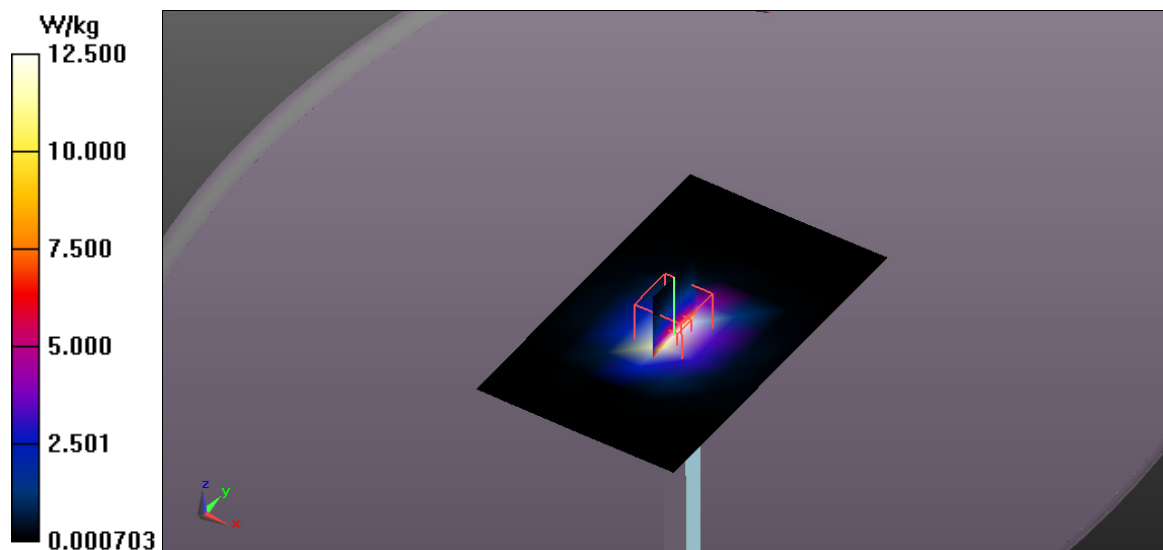
Measurement Standard: DASYS (IEEE/IEC/ANSI C63.19-2007)

DASY5.2 Configuration:

- Probe: ET3DV6 - SN1711; ConvF(4.07, 4.07, 4.07); Calibrated: 19.09.2012;
- Sensor-Surface: 4mm (Mechanical Surface Detection)
- Electronics: DAE3 Sn522; Calibrated: 13.09.2012
- Phantom: ELI v4.0; Type: QDOVA001BB; Serial: TP: 1013
- Measurement SW: DASYS2, Version 52.8 (2); SEMCAD X Version 14.6.6 (6824)

System Performance Check at Frequencies above 1 GHz/d=10mm, Pin=250 mW, dist=4.0mm (ET-Probe)/Area Scan (7x11x1): Measurement grid: dx=15mm, dy=15mm
Maximum value of SAR (measured) = 12.5 W/kg

System Performance Check at Frequencies above 1 GHz/d=10mm, Pin=250 mW, dist=4.0mm (ET-Probe)/Zoom Scan (7x7x7)/Cube 0: Measurement grid: dx=5mm, dy=5mm, dz=5mm
Reference Value = 78.785 V/m; Power Drift = -0.02 dB
Peak SAR (extrapolated) = 33.623 mW/g
SAR(1 g) = 12.8 mW/g; SAR(10 g) = 5.77 mW/g
Maximum value of SAR (measured) = 13.8 W/kg



Test Laboratory: Eurofins Product Service GmbH

Dipol Valid.5200 (m)_100mW 14.01.2013

DUT: Dipole D5GHzV2; Type: D5GHzV2; Serial: D5GHzV2 - SN1140

Communication System: CW; Frequency: 5200 MHz; Duty Cycle: 1:1

Medium: MBBL 3-6 GHz Medium parameters used: $f = 5200$ MHz; $\sigma = 5.474$ mho/m; $\epsilon_r = 49.147$; $\rho = 1000$ kg/m³

Phantom section: Flat Section

Measurement Standard: DASYS (IEEE/IEC/ANSI C63.19-2007)

DASY5.2 Configuration:

- Probe: EX3DV4 - SN3893; ConvF(4.33, 4.33, 4.33); Calibrated: 26.11.2012;
- Sensor-Surface: 4mm (Mechanical Surface Detection)
- Electronics: DAE3 Sn522; Calibrated: 13.09.2012
- Phantom: ELI v4.0; Type: QDOVA001BB; Serial: TP: 1013
- Measurement SW: DASY52, Version 52.8 (2); SEMCAD X Version 14.6.6 (6824)

System Performance Check at Frequencies above 1 GHz/d=10mm, Pin=100 mW, dist=2.0mm

(EX-Probe)/Area Scan (7x13x1): Measurement grid: dx=10mm, dy=10mm

Maximum value of SAR (measured) = 6.66 W/kg

System Performance Check at Frequencies above 1 GHz/d=10mm, Pin=100 mW, dist=2.0mm

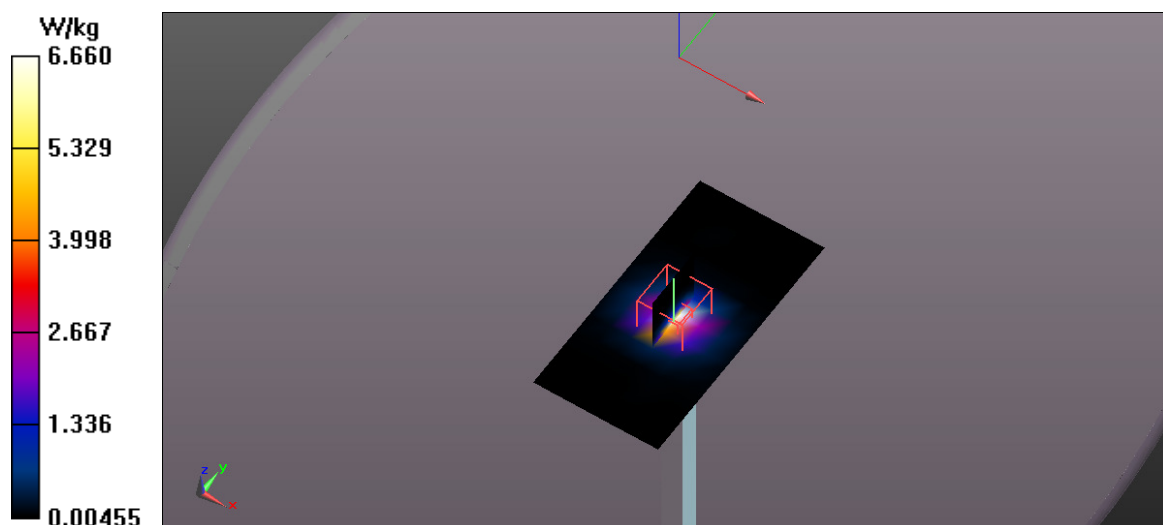
(EX-Probe)/Zoom Scan (7x7x7) (7x7x7)/Cube 0: Measurement grid: dx=5mm, dy=5mm, dz=5mm

Reference Value = 36.535 V/m; Power Drift = -0.04 dB

Peak SAR (extrapolated) = 38.734 mW/g

SAR(1 g) = 7.47 mW/g; SAR(10 g) = 2.02 mW/g

Maximum value of SAR (measured) = 7.54 W/kg



Test Laboratory: Eurofins Product Service GmbH

Dipol Valid.5500 (m)_100mW 12.07.2013

DUT: Dipole D5GHzV2; Type: D5GHzV2; Serial: D5GHzV2 - SN1140

Communication System: UID 0 - n/a, CW; Frequency: 5500 MHz; Duty Cycle: 1:1

Medium: MBBL 3-6 GHz Medium parameters used: $f = 5500\text{MHz}$; $\sigma = 5.86\text{ S/m}$; $\epsilon_r = 48.9$; $\rho = 1000\text{ kg/m}^3$

Phantom section: Flat Section

Measurement Standard: DASY5 (IEEE/IEC/ANSI C63.19-2007)

DASY5.2 Configuration:

- Probe: EX3DV4 - SN3893; ConvF(4.33, 4.33, 4.33); Calibrated: 26.11.2012;
- Sensor-Surface: 4mm (Mechanical Surface Detection)
- Electronics: DAE3 Sn522; Calibrated: 13.09.2012
- Phantom: ELI v4.0; Type: QDOVA001BB; Serial: TP: 1013
- Measurement SW: DASY52, Version 52.8 (6); SEMCAD X Version 14.6.9 (7117)

System Performance Check at Frequencies above 1 GHz/d=10mm, Pin=100 mW, dist=2.0mm (EX-Probe)/Area Scan (7x7x1): Measurement grid: dx=10mm, dy=10mm

Maximum value of SAR (measured) = 8.14 W/kg

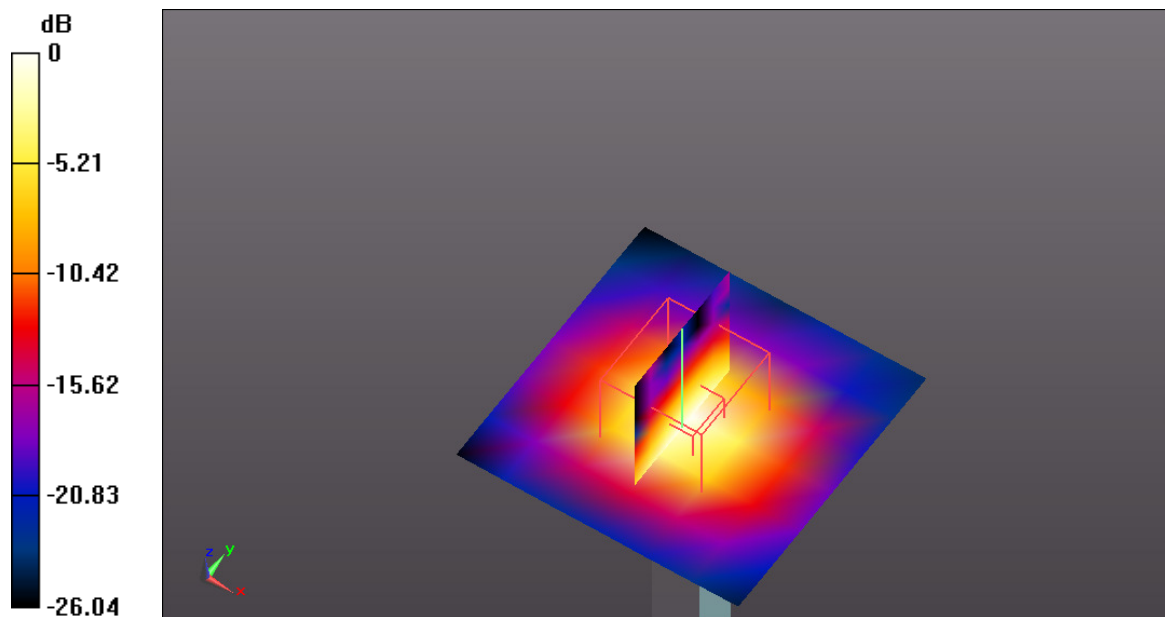
System Performance Check at Frequencies above 1 GHz/d=10mm, Pin=100 mW, dist=2.0mm (EX-Probe)/Zoom Scan (7x7x7) (7x7x7)/Cube 0: Measurement grid: dx=5mm, dy=5mm, dz=5mm

Reference Value = 39.990 V/m; Power Drift = -0.04 dB

Peak SAR (extrapolated) = 50.6 W/kg

SAR(1 g) = 8.67 W/kg; SAR(10 g) = 2.3 W/kg

Maximum value of SAR (measured) = 8.25 W/kg



0 dB = 8.14 W/kg = 9.11 dBW/kg

Test Laboratory: Eurofins Product Service GmbH

Dipol Valid.5800 (m)_100mW 11.07.2013

DUT: Dipole D5GHzV2; Type: D5GHzV2; Serial: D5GHzV2 - SN1140

Communication System: UID 0 - n/a, CW; Frequency: 5800 MHz; Duty Cycle: 1:1

Medium: MBBL 3-6 GHz Medium parameters used: $f = 5800$ MHz; $\sigma = 6.29$ S/m; $\epsilon_r = 48.4$; $\rho = 1000$ kg/m³

Phantom section: Flat Section

Measurement Standard: DASYS (IEEE/IEC/ANSI C63.19-2007)

DASY5.2 Configuration:

- Probe: EX3DV4 - SN3893; ConvF(4.08, 4.08, 4.08); Calibrated: 26.11.2012;
- Sensor-Surface: 4mm (Mechanical Surface Detection)
- Electronics: DAE3 Sn522; Calibrated: 13.09.2012
- Phantom: ELI v4.0; Type: QDOVA001BB; Serial: TP: 1013
- Measurement SW: DASY52, Version 52.8 (6); SEMCAD X Version 14.6.9 (7117)

System Performance Check at Frequencies above 1 GHz/d=10mm, Pin=100 mW, dist=2.0mm (EX-Probe)/Area Scan (7x7x1): Measurement grid: dx=10mm, dy=10mm

Maximum value of SAR (measured) = 8.31 W/kg

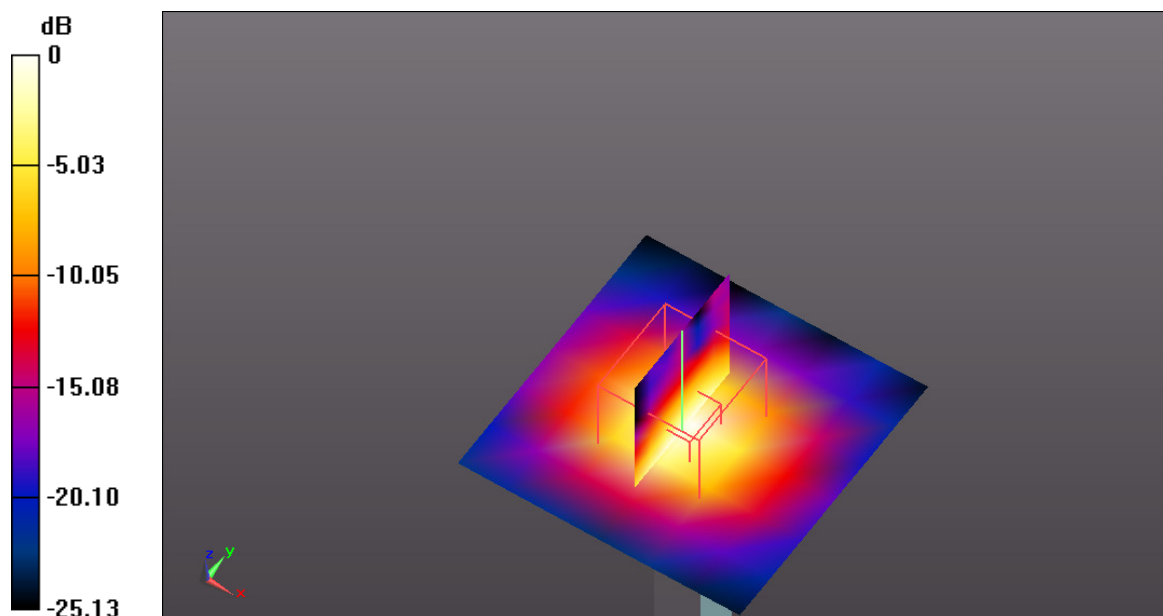
System Performance Check at Frequencies above 1 GHz/d=10mm, Pin=100 mW, dist=2.0mm (EX-Probe)/Zoom Scan (7x7x7) (7x7x7)/Cube 0: Measurement grid: dx=5mm, dy=5mm, dz=5mm

Reference Value = 37.029 V/m; Power Drift = -0.02 dB

Peak SAR (extrapolated) = 66.8 W/kg

SAR(1 g) = 8.04W/kg; SAR(10 g) = 2.2 W/kg

Maximum value of SAR (measured) = 8.61 W/kg



0 dB = 8.31 W/kg = 9.20 dBW/kg

ANNEX C SAR Measurement Reports

Test Laboratory: Eurofins Product Service GmbH

WLAN-2.4G_CH-6_DSSS_1MBit_Flat_Front_0mm

DUT: i.roc Ci70; Type: PDA with WLAN 2.4G/5G; Serial: Sample1

Communication System: WLAN 2.4G / 5G FCC; Frequency: 2437 MHz; Duty Cycle: 1:1

Medium: Muscle 2450 MHz Medium parameters used: $f = 2437$ MHz; $\sigma = 2.003$ mho/m; $\epsilon_r = 52.932$; $\rho = 1000$ kg/m³

Phantom section: Flat Section

Measurement Standard: DASYS (IEEE/IEC/ANSI C63.19-2007)

DASY5.2 Configuration:

- Probe: ET3DV6 - SN1711; ConvF(4.07, 4.07, 4.07); Calibrated: 19.09.2012;
- Sensor-Surface: 4mm (Mechanical And Optical Surface Detection), Sensor-Surface: 4mm (Mechanical Surface Detection)
- Electronics: DAE3 Sn522; Calibrated: 13.09.2012
- Phantom: ELI v4.0; Type: QDOVA001BB; Serial: TP: 1013
- Measurement SW: DASYS2, Version 52.8 (2); SEMCAD X Version 14.6.6 (6824)

Configuration/i.roc Ci70/Area Scan (7x15x1): Measurement grid: dx=20mm, dy=20mm

Maximum value of SAR (measured) = 0.0925 W/kg

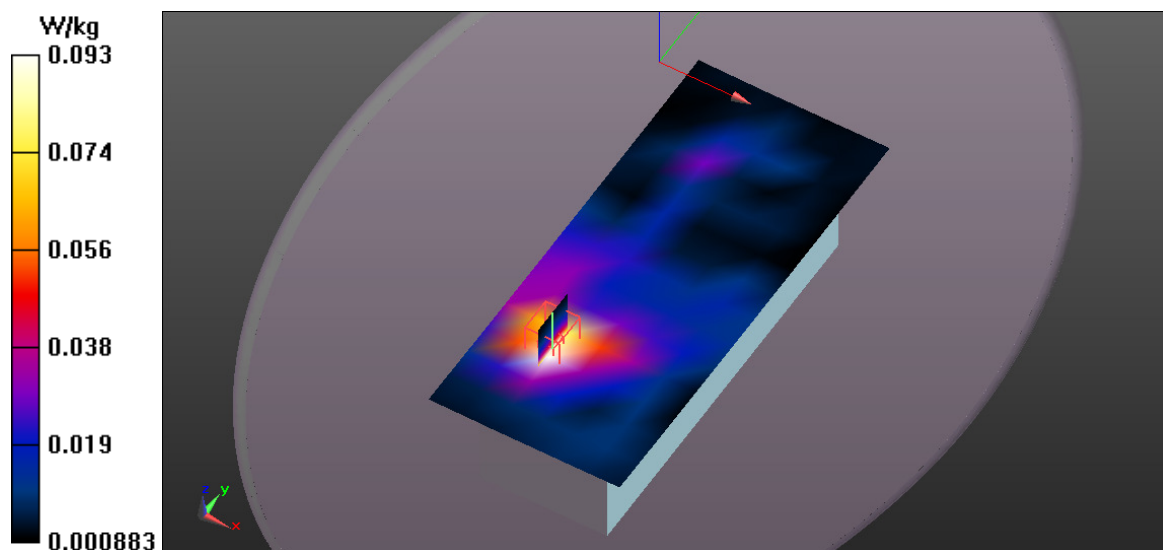
Configuration/i.roc Ci70/Zoom Scan (7x7x7)/Cube 0: Measurement grid: dx=5mm, dy=5mm, dz=5mm

Reference Value = 2.748 V/m; Power Drift = -0.05 dB

Peak SAR (extrapolated) = 0.230 mW/g

SAR(1 g) = 0.098 mW/g; SAR(10 g) = 0.053 mW/g

Maximum value of SAR (measured) = 0.101 W/kg



Test Laboratory: Eurofins Product Service GmbH

WLAN-2.4G_CH-6_DSSS_1MBit_Flat_Back_0mm

DUT: i.roc Ci70; Type: PDA with WLAN 2.4G/5G; Serial: Sample1

Communication System: WLAN 2.4G / 5G FCC; Frequency: 2437 MHz; Duty Cycle: 1:1

Medium: Muscle 2450 MHz Medium parameters used: $f = 2437 \text{ MHz}$; $\sigma = 2.003 \text{ mho/m}$; $\epsilon_r = 52.932$; $\rho = 1000 \text{ kg/m}^3$

Phantom section: Flat Section

Measurement Standard: DASY5 (IEEE/IEC/ANSI C63.19-2007)

DASY5.2 Configuration:

- Probe: ET3DV6 - SN1711; ConvF(4.07, 4.07, 4.07); Calibrated: 19.09.2012;
- Sensor-Surface: 4mm (Mechanical And Optical Surface Detection), Sensor-Surface: 4mm (Mechanical Surface Detection)
- Electronics: DAE3 Sn522; Calibrated: 13.09.2012
- Phantom: ELI v4.0; Type: QDOVA001BB; Serial: TP: 1013
- Measurement SW: DASY52, Version 52.8 (2); SEMCAD X Version 14.6.6 (6824)

Configuration/i.roc Ci70/Area Scan (7x15x1): Measurement grid: $dx=20\text{mm}$, $dy=20\text{mm}$

Maximum value of SAR (measured) = 0.116 W/kg

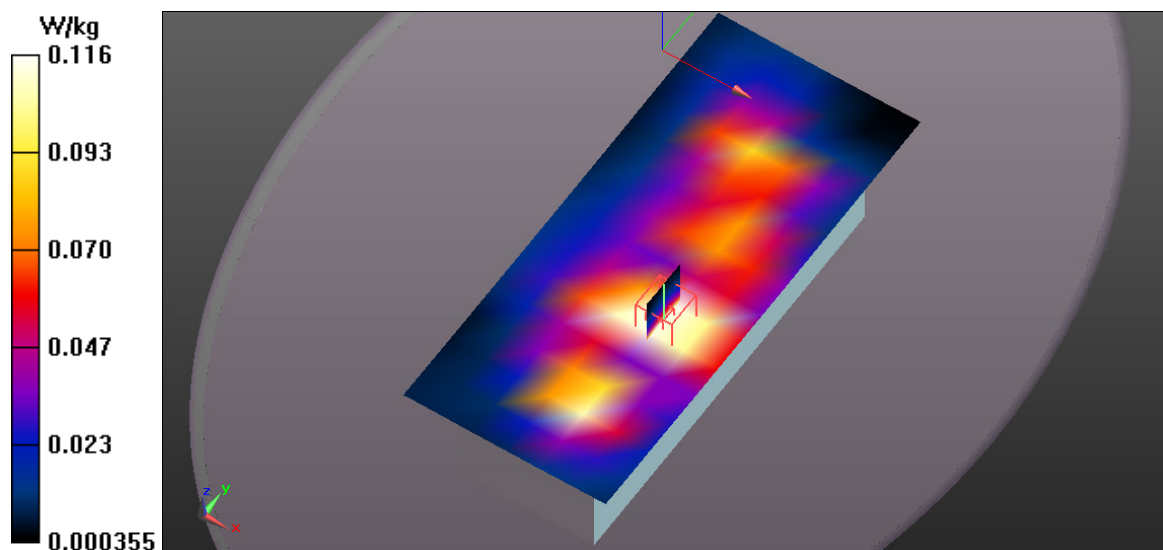
Configuration/i.roc Ci70/Zoom Scan (7x7x7)/Cube 0: Measurement grid: $dx=5\text{mm}$, $dy=5\text{mm}$, $dz=5\text{mm}$

Reference Value = 4.142 V/m; Power Drift = -0.16 dB

Peak SAR (extrapolated) = 0.302 mW/g

SAR(1 g) = 0.134 mW/g; SAR(10 g) = 0.076 mW/g

Maximum value of SAR (measured) = 0.138 W/kg



Test Laboratory: Eurofins Product Service GmbH

WLAN-5G-U-NII-Lower_CH-48_OFDM_6MBit_Flat_Back_0mm

DUT: i.roc Ci70; Type: PDA with WLAN 2.4G/5G; Serial: Sample1

Communication System: WLAN 2.4G / 5G FCC; Frequency: 5240 MHz; Duty Cycle: 1:1
Medium: MBBL 3-6 GHz Medium parameters used (interpolated): $f = 5240$ MHz; $\sigma = 5.513$ mho/m; $\epsilon_r = 49.068$; $\rho = 1000$ kg/m³
Phantom section: Flat Section

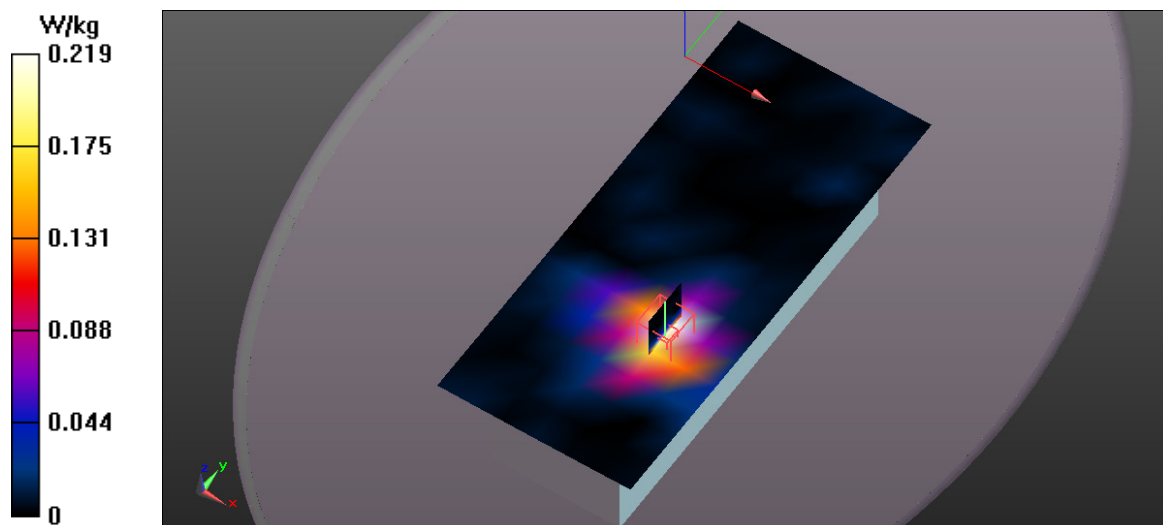
Measurement Standard: DASYS (IEEE/IEC/ANSI C63.19-2007)

DASY5.2 Configuration:

- Probe: EX3DV4 - SN3893; ConvF(4.33, 4.33, 4.33); Calibrated: 26.11.2012;
- Sensor-Surface: 4mm (Mechanical Surface Detection)
- Electronics: DAE3 Sn522; Calibrated: 13.09.2012
- Phantom: ELI v4.0; Type: QDOVA001BB; Serial: TP: 1013
- Measurement SW: DASYS2, Version 52.8 (2); SEMCAD X Version 14.6.6 (6824)

Configuration/i.roc Ci70/Area Scan (7x15x1): Measurement grid: dx=20mm, dy=20mm
Maximum value of SAR (measured) = 0.219 W/kg

Configuration/i.roc Ci70/Zoom Scan (7x7x7)/Cube 0: Measurement grid: dx=5mm, dy=5mm, dz=5mm
Reference Value = 1.362 V/m; Power Drift = -0.09 dB
Peak SAR (extrapolated) = 0.771 mW/g
SAR(1 g) = 0.260 mW/g; SAR(10 g) = 0.105 mW/g
Maximum value of SAR (measured) = 0.289 W/kg



Test Laboratory: Eurofins Product Service GmbH

WLAN-5G-U-NII-middle_CH-64_OFDM_6MBit_Flat_Back_0mm

DUT: i.roc Ci70; Type: PDA with WLAN 2.4G/5G; Serial: Sample1

Communication System: WLAN 2.4G / 5G FCC; Frequency: 5320 MHz; Duty Cycle: 1:1
Medium: MBBL 3-6 GHz Medium parameters used: $f = 5320$ MHz; $\sigma = 5.563$ mho/m; $\epsilon_r = 48.964$; $\rho = 1000$ kg/m³
Phantom section: Flat Section

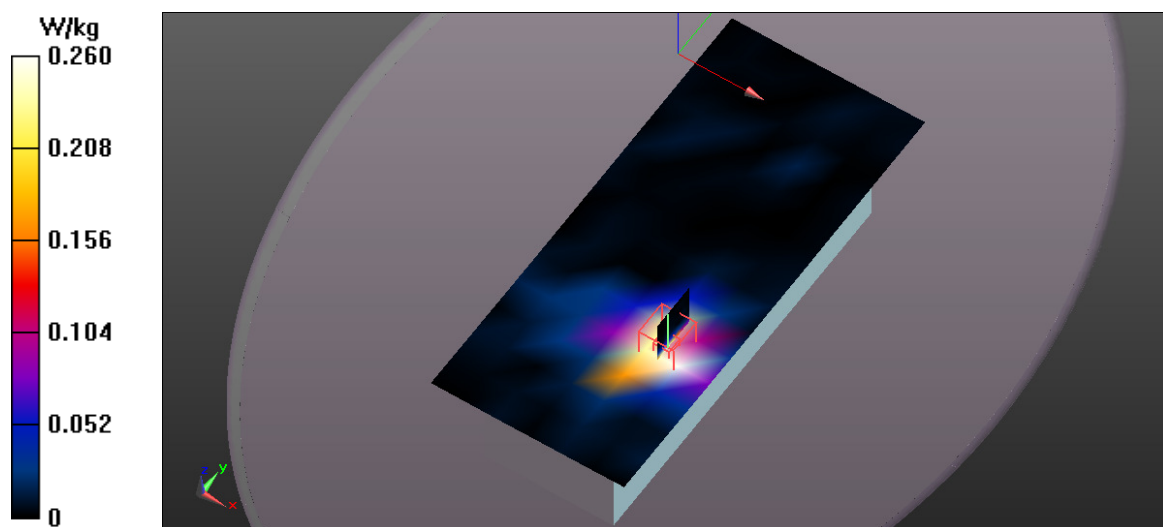
Measurement Standard: DASYS (IEEE/IEC/ANSI C63.19-2007)

DASY5.2 Configuration:

- Probe: EX3DV4 - SN3893; ConvF(4.33, 4.33, 4.33); Calibrated: 26.11.2012;
- Sensor-Surface: 4mm (Mechanical Surface Detection)
- Electronics: DAE3 Sn522; Calibrated: 13.09.2012
- Phantom: ELI v4.0; Type: QDOVA001BB; Serial: TP: 1013
- Measurement SW: DASYS2, Version 52.8 (2); SEMCAD X Version 14.6.6 (6824)

Configuration/i.roc Ci70/Area Scan (7x15x1): Measurement grid: dx=20mm, dy=20mm
Maximum value of SAR (measured) = 0.260 W/kg

Configuration/i.roc Ci70/Zoom Scan (7x7x7)/Cube 0: Measurement grid: dx=5mm, dy=5mm, dz=5mm
Reference Value = 1.036 V/m; Power Drift = 0.09 dB
Peak SAR (extrapolated) = 0.888 mW/g
SAR(1 g) = 0.334 mW/g; SAR(10 g) = 0.130 mW/g
Maximum value of SAR (measured) = 0.388 W/kg



Test Laboratory: Eurofins Product Service GmbH

WLAN-5G-U-NII-CH-100_OFDM_6MBit_Flat_front 2_0mm

DUT: i.roc Ci70; Type: PDA with WLAN 2.4G/5G; Serial: Sample1

Communication System: UID 0 - n/a, IEEE 802.11a/h WiFi 5 GHz (OFDM, 6Mbps); Frequency: 5500 MHz; Duty Cycle: 1:17.0608

Medium: MBBL 3-6 GHz Medium parameters used: $f = 5500$ MHz; $\sigma = 5.86$ S/m; $\epsilon_r = 48.9$; $\rho = 1000$ kg/m³

Phantom section: Flat Section

Measurement Standard: DASYS (IEEE/IEC/ANSI C63.19-2007)

DASY5.2 Configuration:

- Probe: EX3DV4 - SN3893; ConvF(4.1, 4.1, 4.1); Calibrated: 26.11.2012;
- Sensor-Surface: 4mm (Mechanical Surface Detection)
- Electronics: DAE3 Sn522; Calibrated: 13.09.2012
- Phantom: ELI v4.0; Type: QDOVA001BB; Serial: TP: 1013
- Measurement SW: DASYS2, Version 52.8 (6); SEMCAD X Version 14.6.9 (7117)

Configuration/i.roc Ci70/Area Scan (8x9x1): Measurement grid: dx=20mm, dy=20mm

Maximum value of SAR (measured) = 0.0245 W/kg

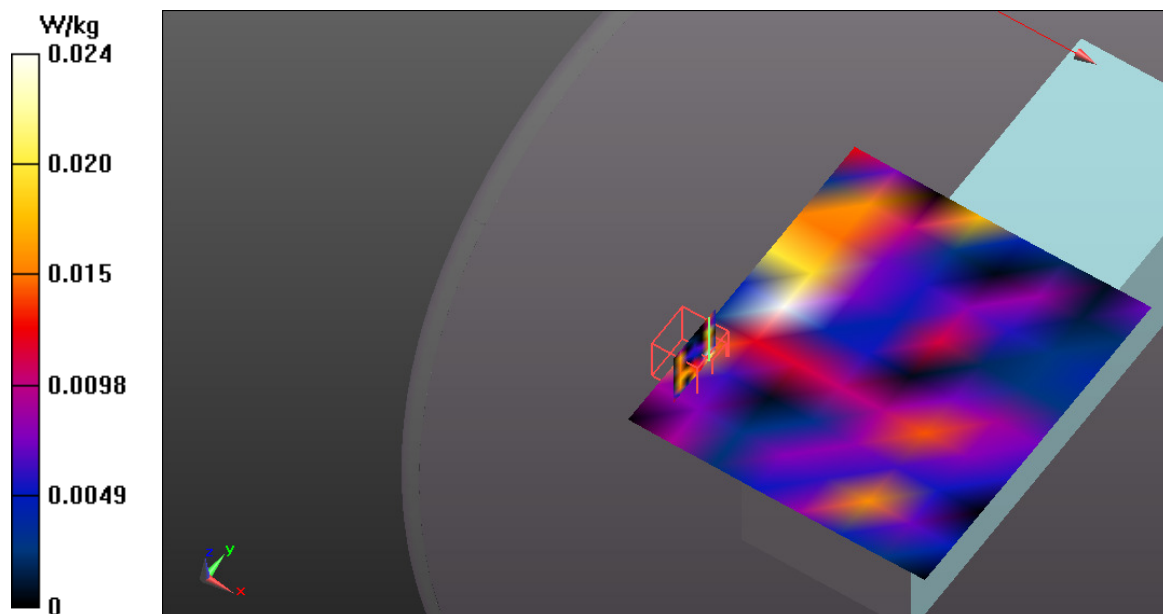
Configuration/i.roc Ci70/Zoom Scan (7x7x7)/Cube 0: Measurement grid: dx=5mm, dy=5mm, dz=5mm

Reference Value = 1.047 V/m; Power Drift = 0.06 dB

Peak SAR (extrapolated) = 0.0150 W/kg

SAR(1 g) = 0.000211 W/kg; SAR(10 g) = 2.26e-005 W/kg

Maximum value of SAR (measured) = 0.0151 W/kg



Test Laboratory: Eurofins Product Service GmbH

WLAN-5G-U-NII-CH-100_OFDM_6MBit_Flat_back_0mm

DUT: i.roc Ci70; Type: PDA with WLAN 2.4G/5G; Serial: Sample1

Communication System: UID 0 - n/a, IEEE 802.11a/h WiFi 5 GHz (OFDM, 6Mbps); Frequency: 5500 MHz; Duty Cycle: 1:17.0608

Medium: MBBL 3-6 GHz Medium parameters used: $f = 5500$ MHz; $\sigma = 5.86$ S/m; $\epsilon_r = 48.9$; $\rho = 1000$ kg/m³

Phantom section: Flat Section

Measurement Standard: DASYS (IEEE/IEC/ANSI C63.19-2007)

DASY5.2 Configuration:

- Probe: EX3DV4 - SN3893; ConvF(4.1, 4.1, 4.1); Calibrated: 26.11.2012;
- Sensor-Surface: 4mm (Mechanical Surface Detection)
- Electronics: DAE3 Sn522; Calibrated: 13.09.2012
- Phantom: ELI v4.0; Type: QDOVA001BB; Serial: TP: 1013
- Measurement SW: DASYS2, Version 52.8 (6); SEMCAD X Version 14.6.9 (7117)

Configuration/i.roc Ci70/Area Scan (8x14x1): Measurement grid: dx=20mm, dy=20mm

Maximum value of SAR (measured) = 0.107 W/kg

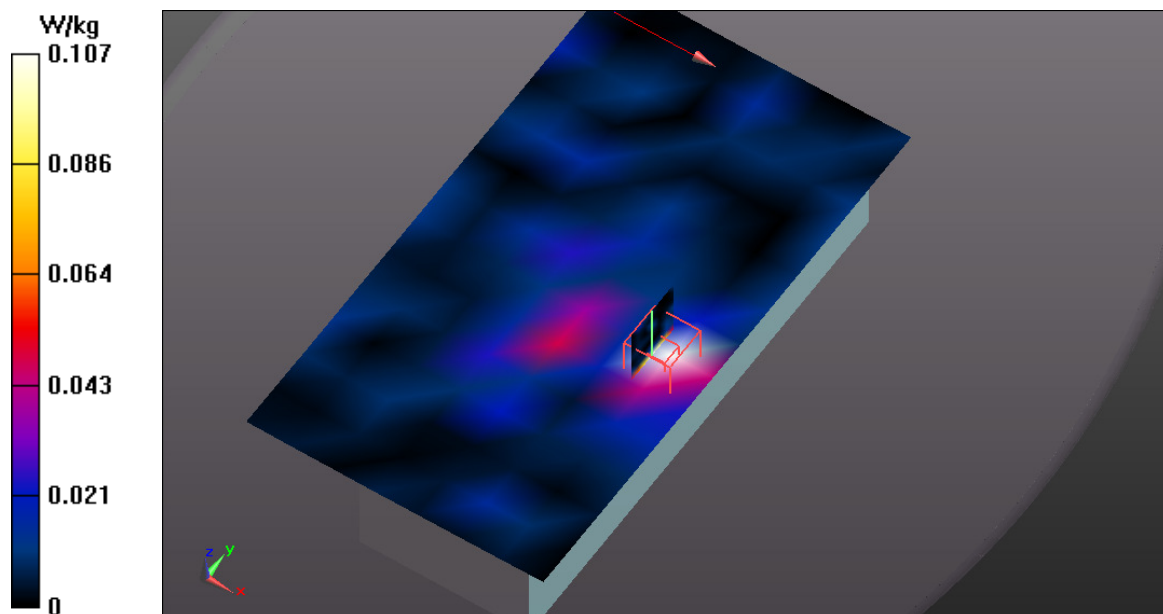
Configuration/i.roc Ci70/Zoom Scan (7x7x7)/Cube 0: Measurement grid: dx=5mm, dy=5mm, dz=5mm

Reference Value = 0 V/m; Power Drift = 0.05 dB

Peak SAR (extrapolated) = 0.487 W/kg

SAR(1 g) = 0.101 W/kg; SAR(10 g) = 0.038 W/kg

Maximum value of SAR (measured) = 0.0849 W/kg



Test Laboratory: Eurofins Product Service GmbH

WLAN-5G-U-NII-CH-149_OFDM_6MBit_Flat_front 2_0mm

DUT: i.roc Ci70; Type: PDA with WLAN 2.4G/5G; Serial: Sample1

Communication System: UID 0 - n/a, IEEE 802.11a/h WiFi 5 GHz (OFDM, 6Mbps); Frequency: 5745 MHz; Duty Cycle: 1:17.0608
Medium: MBBL 3-6 GHz Medium parameters used (interpolated): $f = 5745$ MHz; $\sigma = 6.221$ S/m; $\epsilon_r = 48.41$; $\rho = 1000$ kg/m³
Phantom section: Flat Section

Measurement Standard: DASYS (IEEE/IEC/ANSI C63.19-2007)

DASY5.2 Configuration:

- Probe: EX3DV4 - SN3893; ConvF(4.08, 4.08, 4.08); Calibrated: 26.11.2012;
- Sensor-Surface: 4mm (Mechanical Surface Detection)
- Electronics: DAE3 Sn522; Calibrated: 13.09.2012
- Phantom: ELI v4.0; Type: QDOVA001BB; Serial: TP: 1013
- Measurement SW: DASY52, Version 52.8 (6); SEMCAD X Version 14.6.9 (7117)

Configuration/i.roc Ci70/Area Scan (7x15x1): Measurement grid: dx=20mm, dy=20mm

Maximum value of SAR (measured) = 0.0289 W/kg

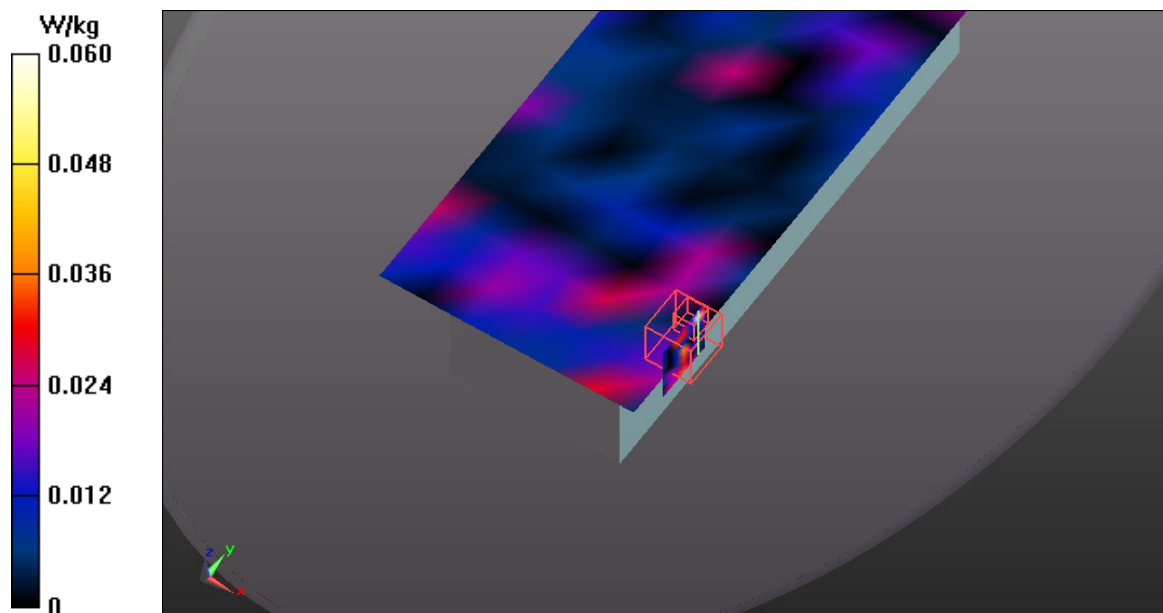
Configuration/i.roc Ci70/Zoom Scan (7x7x7)/Cube 0: Measurement grid: dx=5mm, dy=5mm, dz=5mm

Reference Value = 0.781 V/m; Power Drift = 0.1dB

Peak SAR (extrapolated) = 0.0190 W/kg

SAR(1 g) = 0.000296 W/kg; SAR(10 g) = 6.52e-005 W/kg

Maximum value of SAR (measured) = 0.0187 W/kg



Test Laboratory: Eurofins Product Service GmbH

WLAN-5G-U-NII-CH-149_OFDM_6MBit_Flat_back_0mm

DUT: i.roc Ci70; Type: PDA with WLAN 2.4G/5G; Serial: Sample1

Communication System: UID 0 - n/a, IEEE 802.11a/h WiFi 5 GHz (OFDM, 6Mbps); Frequency: 5745 MHz; Duty Cycle: 1:17.0608
Medium: MBBL 3-6 GHz Medium parameters used (interpolated): $f = 5745$ MHz; $\sigma = 6.221$ S/m; $\epsilon_r = 48.41$; $\rho = 1000$ kg/m³
Phantom section: Flat Section

Measurement Standard: DASY5 (IEEE/IEC/ANSI C63.19-2007)

DASY5.2 Configuration:

- Probe: EX3DV4 - SN3893; ConvF(4.08, 4.08, 4.08); Calibrated: 26.11.2012;
- Sensor-Surface: 4mm (Mechanical Surface Detection)
- Electronics: DAE3 Sn522; Calibrated: 13.09.2012
- Phantom: ELI v4.0; Type: QDOVA001BB; Serial: TP: 1013
- Measurement SW: DASY52, Version 52.8 (6); SEMCAD X Version 14.6.9 (7117)

Configuration/i.roc Ci70/Area Scan (7x15x1): Measurement grid: dx=20mm, dy=20mm

Maximum value of SAR (measured) = 0.0556 W/kg

Configuration/i.roc Ci70/Zoom Scan (7x7x7)/Cube 0: Measurement grid: dx=5mm, dy=5mm, dz=5mm

Reference Value = 2.043 V/m; Power Drift = -0.01 dB

Peak SAR (extrapolated) = 0.148 W/kg

SAR(1 g) = 0.019 W/kg; SAR(10 g) = 0.00542 W/kg

Maximum value of SAR (measured) = 0.0363 W/kg

