


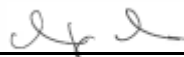


FCC TEST REPORT

Product : Silver Seal Keyboard
Trade mark : 
Model/Type reference : SSKSV207xxx, SSWKSV207xxx,
SSKSV208xxx, SSWKSV208xxx
Serial Number : N/A
Ratings : DC 5V
FCC ID : X7LSS207208
Report Number : EESZF11140002-2
Date : Dec. 30, 2013
Regulations : See below

Test Standards	Results
<input checked="" type="checkbox"/> 47 CFR FCC Part 15 Subpart B: 2012	PASS

Prepared for:
Seal Shield Corporation
3105 Riverside Avenue Jacksonville, FL 32205

Prepared by:
Centre Testing International (Shenzhen) Corporation
Hongwei Industrial Zone, 70 Area, Bao'an District,
Shenzhen, Guangdong, China
TEL: +86-755-3368 3668
FAX: +86-755-3368 3385

Tested by:  Reviewed by: 
Approved by:  Date: Dec. 30, 2013



Check No.: 1702082273

TABLE OF CONTENTS

Description	Page
1. GENERAL INFORMATION	3
2. TEST SUMMARY	3
3. MEASUREMENT UNCERTAINTY	3
4. PRODUCT INFORMATION AND TEST SETUP	4
5. FACILITIES AND ACCREDITATIONS	4
5.1 TEST FACILITY	4
5.2 TEST EQUIPMENT LIST	4
6. SYSTEM TEST CONFIGURATION	5
6.1. JUSTIFICATION	5
6.2. PRODUCT EXERCISING SOFTWARE	5
7. CONDUCTED EMISSION TEST	6
7.1. LIMITS	6
7.2. BLOCK DIAGRAM OF TEST SETUP	6
7.3. PROCEDURE OF CONDUCTED EMISSION TEST	6
7.4. WORST CASE TEST GRAPHS AND TEST DATA	7
8. RADIATED EMISSION TEST	9
8.1. LIMITS	9
8.2. BLOCK DIAGRAM OF TEST SETUP	9
8.3. PROCEDURE OF RADIATED EMISSION TEST	9
8.4. WORST CASE TEST GRAPHS AND TEST DATA	10
APPENDIX 1 PHOTOGRAPHS OF TEST SETUP	12
APPENDIX 2 EXTERNAL PHOTOGRAPHS OF PRODUCT	13
APPENDIX 3 INTERNAL PHOTOGRAPHS OF PRODUCT	15

(Note: N/A means not applicable)

1. GENERAL INFORMATION

Applicant: Seal Shield Corporation
3105 Riverside Avenue Jacksonville, FL 32205

Factory: Delux Technology Co., LTD.
Delux Industrial Park, Lanzhu Street, New Pingshan District,
Shenzhen, Guangdong Province, 518118 China

Equipment Authorization: Certification

FCC ID: X7LSS207208

Product: Silver Seal Keyboard

Trade mark: 

Model/Type reference: SSKSV207xxx, SSWKSV207xxx, SSKSV208xxx, SSWKSV208xxx

Serial Number: N/A

Report Number: EESZF11140002-2

Sample Received Date: Nov. 15, 2013

Sample tested Date: Nov. 15, 2013 to Dec. 29, 2013

2. TEST SUMMARY

The Product has been tested according to the following specifications:

Standard	Test Item	Test
FCC 15.107	Conducted Emission	Yes
FCC 15.109	Radiated Emission	Yes

3. MEASUREMENT UNCERTAINTY

Where relevant, the following measurement uncertainty levels have been estimated for tests performed on the Product as specified in CISPR 16-4-2. This uncertainty represents an expanded uncertainty expressed at approximately the 95% confidence level using a coverage factor of $k=2$.

Test item	Value (dB)
Conducted disturbance	3.0
Radiated disturbance (30MHz to 1GHz)	4.9

4. PRODUCT INFORMATION AND TEST SETUP

4.1. PRODUCT INFORMATION

Ratings: DC 5V

Model difference: All the models are identical except for the images on the keycaps.

4.2. TEST SETUP CONFIGURATION

See test photographs attached in Appendix 1 for the actual connections between Product and support equipment.

4.3. SUPPORT EQUIPMENT

No.	Device Type	Brand	Model	Series No.	Data Cable	Remark
1.	Notebook	DELL	Vostro 3400	GYQTVP1	N/A	FCC DOC
2.	Mouse	L.Selectron	M004	02284699	Un-shielded 1.2M	FCC DOC

Notes:

- All the equipment/cables were placed in the worst-case configuration to maximize the emission during the test.
- Grounding was established in accordance with the manufacturer's requirements and conditions for the intended use.

5. FACILITIES AND ACCREDITATIONS

5.1 TEST FACILITY

All test facilities used to collect the test data are located at Hongwei Industrial Zone, 70 Area, Bao'an District, Shenzhen, Guangdong, China. The site and apparatus are constructed in conformance with the requirements of ANSI C63.4, CISPR 16-1-1 and other equivalent standards.

5.2 TEST EQUIPMENT LIST

Instrumentation: The following list contains equipments used at CTI for testing.

The calibrations of the measuring instruments, including any accessories that may effect such calibration, are checked frequently to assure their accuracy. Adjustments are made and correction factors applied in accordance with instructions contained in the manual for the measuring instrument.

Equipment used during the tests:

Shielding Room No. 1 - Conducted Emission Test				
Equipment	Manufacturer	Model	Serial No.	Due Date
Receiver	R&S	ESCI	100009	07/19/2014
LISN	R&S	ENV216	100098	07/19/2014

3M Semi-anechoic Chamber (1)- Radiated disturbance Test				
Equipment	Manufacturer	Model	Serial No.	Due Date
3M Chamber & Accessory Equipment	ETS-LINDGREN	FACT-3	3510	07/12/2016
Spectrum Analyzer	Agilent	E4443A	MY45300910	01/18/2014
Receiver	R&S	ESCI	100435	07/19/2014
TRILOG Broadband Antenna	schwarzbeck	VULB 9163	618	06/25/2014
Multi device Controller	ETS-LINGREN	2090	00057230	N/A

6. SYSTEM TEST CONFIGURATION

6.1. JUSTIFICATION

The system was configured for testing in a typical fashion (as a customer would normally use it), The Product was placed on a turn table, which enabled the engineer to maximize emissions through its placement as outlined in ANSI C63.4 (2009).

The Product was powered by DC 5V during test.

For maximizing emissions, the Product was rotated through 360°, the antenna height was varied from 1 meter to 4 meters above the ground plane, and the antenna polarization was changed. The rear of unit shall be flushed with the rear of the table.

All readings are extrapolated back to the equivalent three meter reading using inverse scaling with distance. Analyzer resolution is 100 kHz or greater for frequencies below 1000 MHz. The spurious emissions more than 20 dB below the permissible value are not reported.

6.2. PRODUCT EXERCISING SOFTWARE

No Software was used during testing.

7. CONDUCTED EMISSION TEST

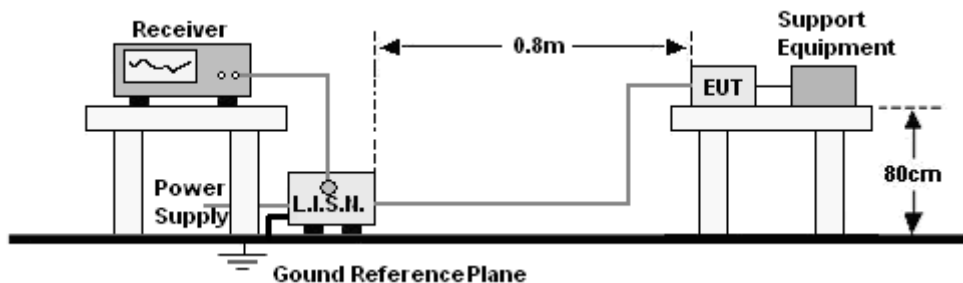
7.1. LIMITS

Limits for Class B digital devices

Frequency range (MHz)	Limits dB(μV)	
	Quasi-peak	Average
0,15 to 0,50	66 to 56	56 to 46
0,50 to 5	56	46
5 to 30	60	50

NOTE: 1. The lower limit shall apply at the transition frequencies.
2. The limit decreases linearly with the logarithm of the frequency in the range 0.15 to 0.50 MHz.

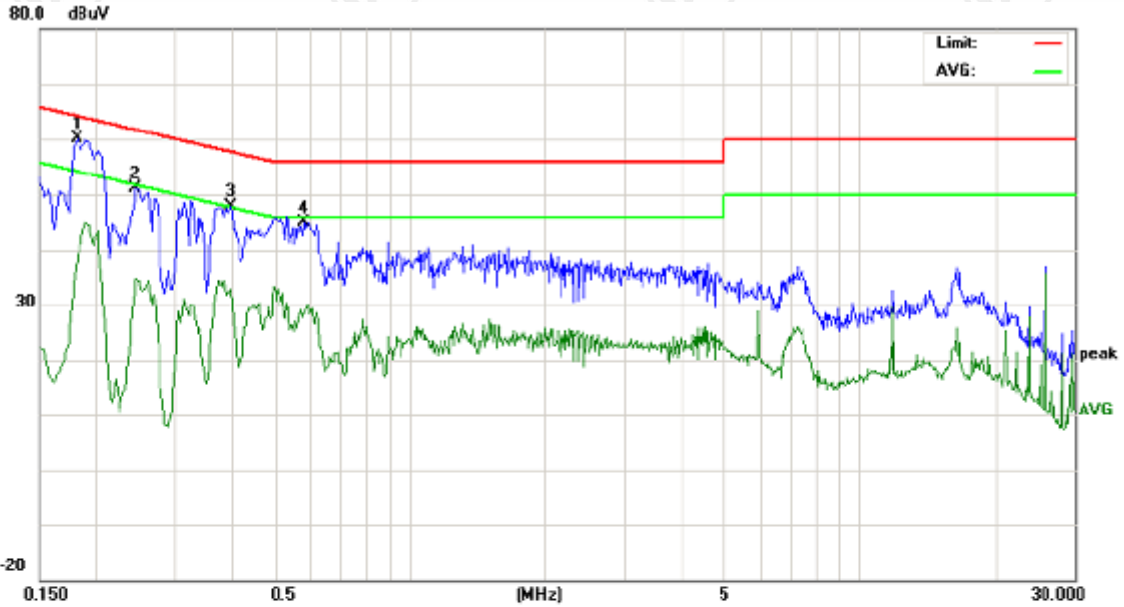
7.2. BLOCK DIAGRAM OF TEST SETUP



7.3. PROCEDURE OF CONDUCTED EMISSION TEST

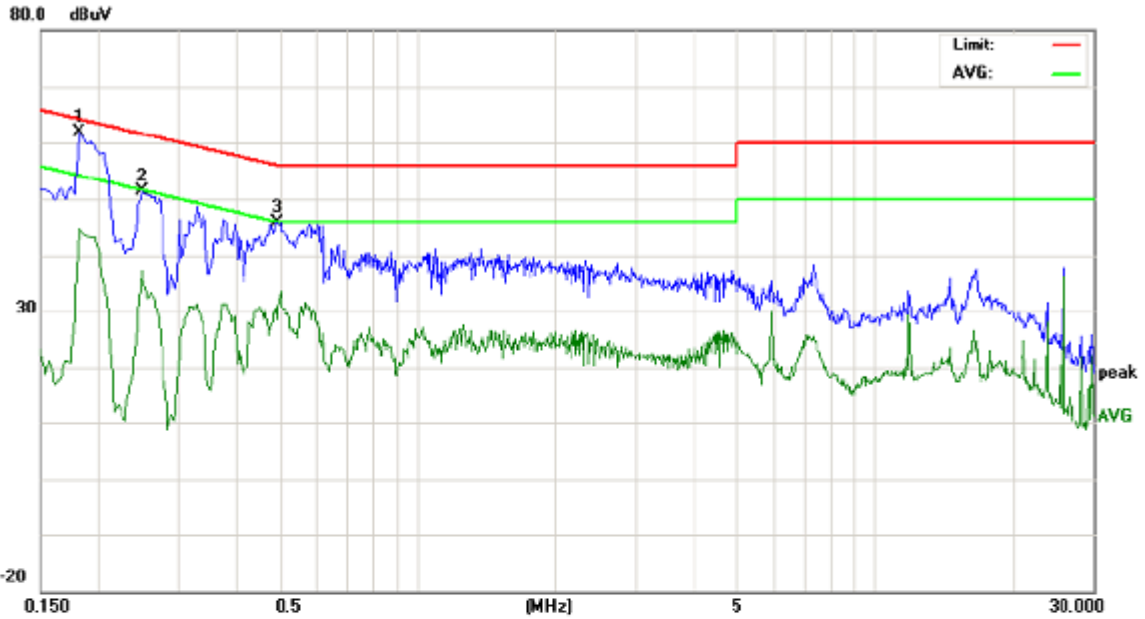
- The Product was placed on a nonconductive table above the horizontal ground reference plane, and 0.4 m from the vertical ground reference plane, and connected to the main through Line Impedance Stability Network (L.I.S.N).
- The RBW of the receiver was set at 9 kHz in 150 kHz ~ 30MHz with Peak and AVG detector in Max Hold mode. Run the receiver's pre-scan to record the maximum disturbance generated from Product in all power lines in the full band.
- For each frequency whose maximum record was higher or close to limit, measure its QP and AVG values and record.

7.4. WORST CASE TEST GRAPHS AND TEST DATA



Site site #1 Phase: **L1** Temperature: 18
 Limit: FCC Class B CE (QP) Power: AC 120V/60Hz Humidity: 45 %
 EUT: Silver Seal Keyboard
 M/N: SSKSV207xxx
 Mode: Normal
 Note:

No.	Freq. MHz	Reading_Level (dBuV)			Correct Factor dB	Measurement (dBuV)			Limit (dBuV)		Margin (dB)		P/F	Comment
		Peak	QP	AVG		peak	QP	AVG	QP	AVG	QP	AVG		
1	0.1819	50.44	46.79	27.11	9.78	60.22	56.57	36.89	64.39	54.39	-7.82	-17.50	P	
2	0.2460	41.39	36.77	20.41	9.80	51.19	46.57	30.21	61.89	51.89	-15.32	-21.68	P	
3	0.3980	38.19	34.40	21.86	9.80	47.99	44.20	31.66	57.89	47.89	-13.69	-16.23	P	
4	0.5820	35.18	31.19	17.93	9.80	44.98	40.99	27.73	56.00	46.00	-15.01	-18.27	P	



Site site #1 Phase: **N** Temperature: 18
 Limit: FCC Class B CE (QP) Power: AC 120V/60Hz Humidity: 45 %
 EUT: Silver Seal Keyboard
 M/N: SSKSV207xxx
 Mode: Normal
 Note:

No.	Freq. MHz	Reading_Level (dBuV)			Correct Factor dB	Measurement (dBuV)			Limit (dBuV)		Margin (dB)		P/F	Comment
		Peak	QP	AVG		peak	QP	AVG	QP	AVG	QP	AVG		
1	0.1819	52.19	47.66	27.73	9.78	61.97	57.44	37.51	64.39	54.39	-6.95	-16.88	P	
2	0.2500	41.57	38.36	23.02	9.80	51.37	48.16	32.82	61.75	51.75	-13.59	-18.93	P	
3	0.4940	36.19	32.90	20.50	9.80	45.99	42.70	30.30	56.10	46.10	-13.40	-15.80	P	

8. RADIATED EMISSION TEST

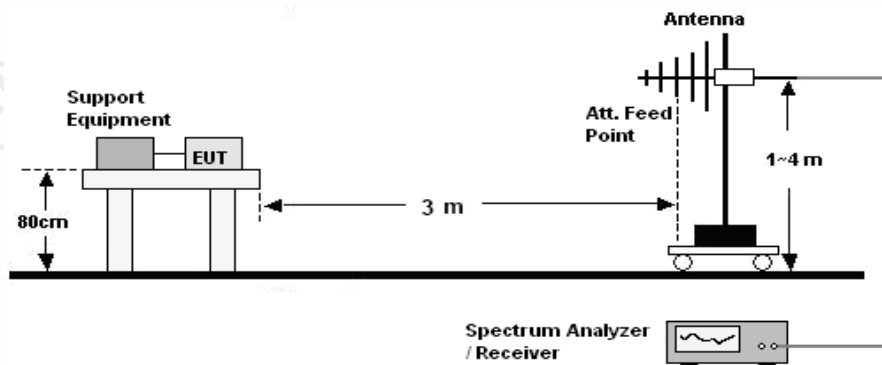
8.1. LIMITS

Limits for Class B digital devices

Frequency (MHz)	limits at 3m dB(μ V/m)
30-88	40.0
88-216	43.5
216-960	46.0
Above 960	54.0

- NOTE:**
1. The lower limit shall apply at the transition frequency.
 2. The limits shown above are based on measuring equipment employing a CISPR quasi-peak detector function for frequencies below or equal to 1000MHz.
 3. The limits shown above are based on measuring equipment employing an average detector function for frequencies above 1000MHz.

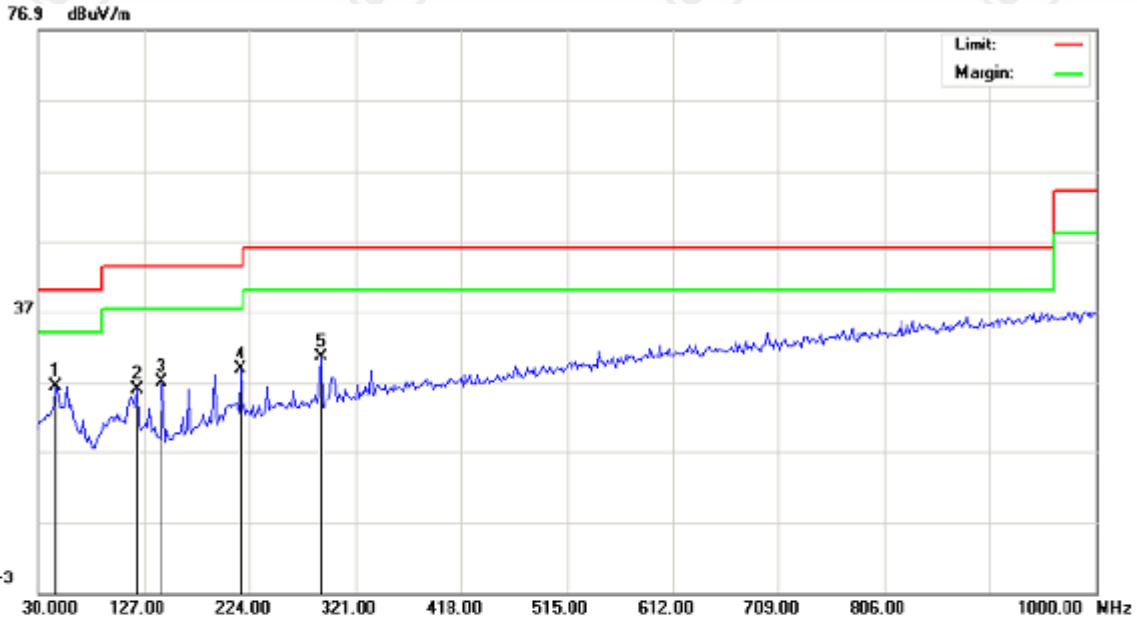
8.2. BLOCK DIAGRAM OF TEST SETUP



8.3. PROCEDURE OF RADIATED EMISSION TEST

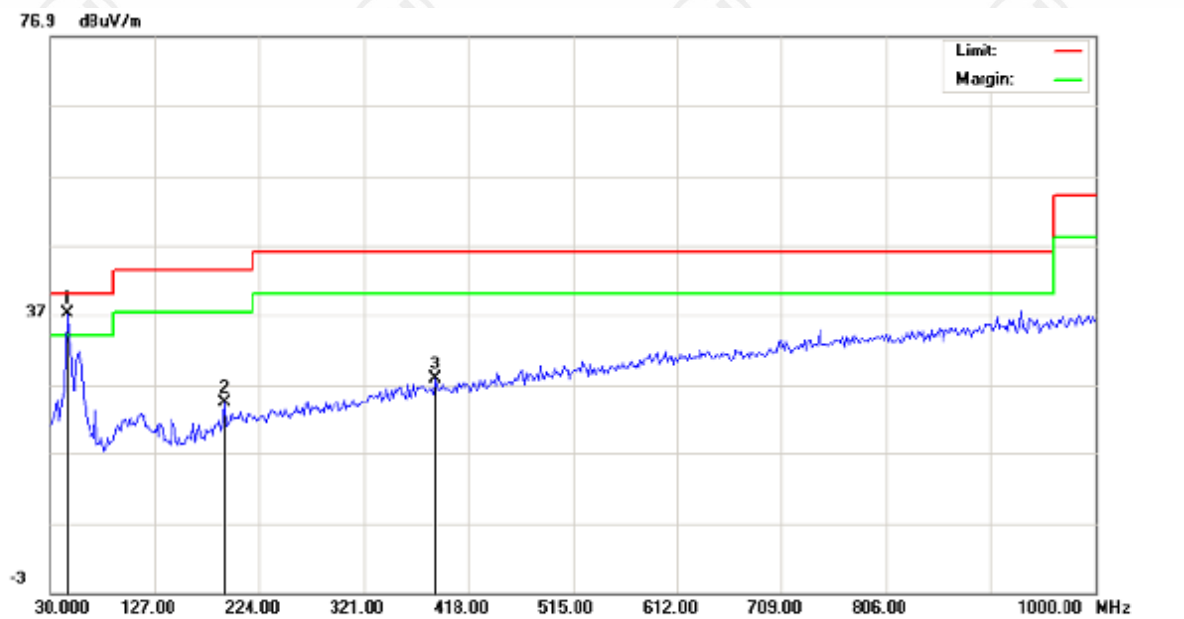
- a. The Product was placed on the non-conductive turntable 0.8m above the ground at a chamber.
- b. Set the spectrum analyzer/receiver in Peak detector, Max Hold mode, and 100 kHz RBW. Record the maximum field strength of all the pre-scan process in the full band when the antenna is varied between 1~4 m in both horizontal and vertical, and the turntable is rotated from 0 to 360 degrees.
- c. For each frequency whose maximum record was higher or close to limit, measure its QP value(120 kHz RBW): vary the antenna's height and rotate the turntable from 0 to 360 degrees to find the height and degree where Product radiated the maximum emission, then set the test frequency analyzer/receiver to QP Detector and specified bandwidth with Maximum Hold Mode, and record the maximum value.

8.4. WORST CASE TEST GRAPHS AND TEST DATA



Site site #1 Polarization: **Horizontal** Temperature: 18
 Limit: FCC PART15 B Power: DC 5V Humidity: 45 %
 EUT: Silver Seal Keyboard
 M/N: SSKSV207xxx
 Mode: Normal
 Note:

No.	Freq. MHz	Reading_Level (dBuV)			Correct Factor dB	Measurement (dBuV/m)			Limit (dBuV/m)		Margin (dB)		P/F	Comment
		Peak	QP	AVG		peak	QP	AVG	QP	AVG	QP	AVG		
1	46.1667	11.22			15.22	26.44			40.00		-13.56		P	
2	120.5333	13.48			12.54	26.02			43.50		-17.48		P	
3	143.1667	16.03			11.05	27.08			43.50		-16.42		P	
4	215.9167	14.63			14.25	28.88			43.50		-14.62		P	
5	288.6666	15.00			15.70	30.70			46.00		-15.30		P	



Site site #1 Polarization: **Vertical** Temperature: 18
 Limit: FCC PART15 B Power: DC 5V Humidity: 45 %
 EUT: Silver Seal Keyboard
 M/N: SSKSV207xxx
 Mode: Normal
 Note:

No.	Freq. MHz	Reading_Level (dBuV)			Correct Factor dB	Measurement (dBuV/m)			Limit (dBuV/m)		Margin (dB)		P/F	Comment
		Peak	QP	AVG		peak	QP	AVG	QP	AVG	QP	AVG		
1	46.1667	21.91	19.36		15.22	37.13	34.58	40.00		-5.42			P	
2	191.6667	11.09			13.35	24.44		43.50		-19.06			P	
3	387.2833	9.57			18.22	27.79		46.00		-18.21			P	

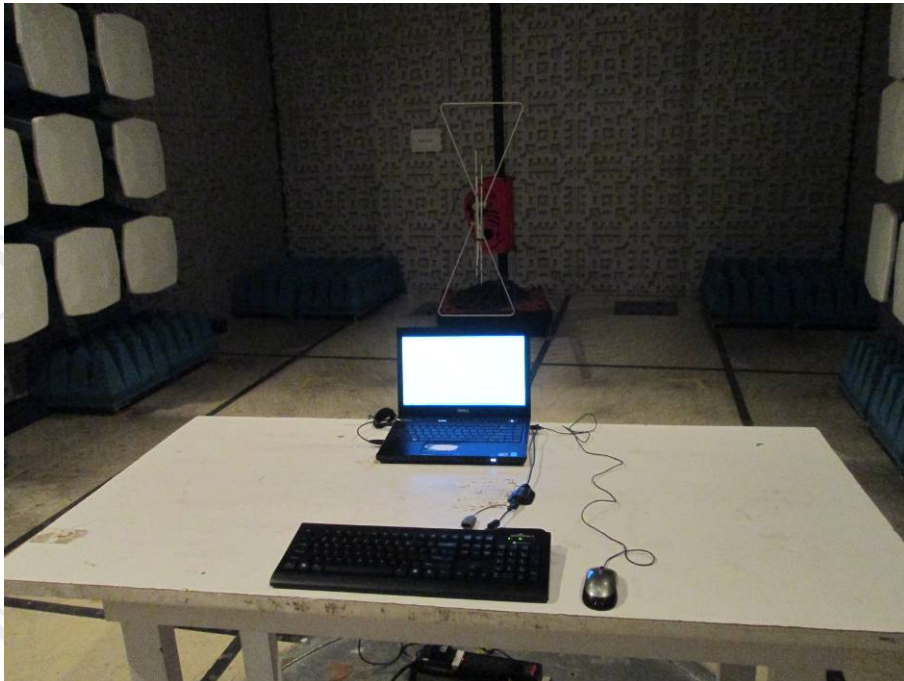
Remark:

The highest frequency of the internal sources of the EUT is less than 1MHz, so the measurement shall only be made up to 1 GHz.

APPENDIX 1 PHOTOGRAPHS OF TEST SETUP



CONDUCTED EMISSION TEST SETUP



RADIATED EMISSION TEST SETUP

APPENDIX 2 EXTERNAL PHOTOGRAPHS OF PRODUCT



External View of Product-1



External View of Product-2

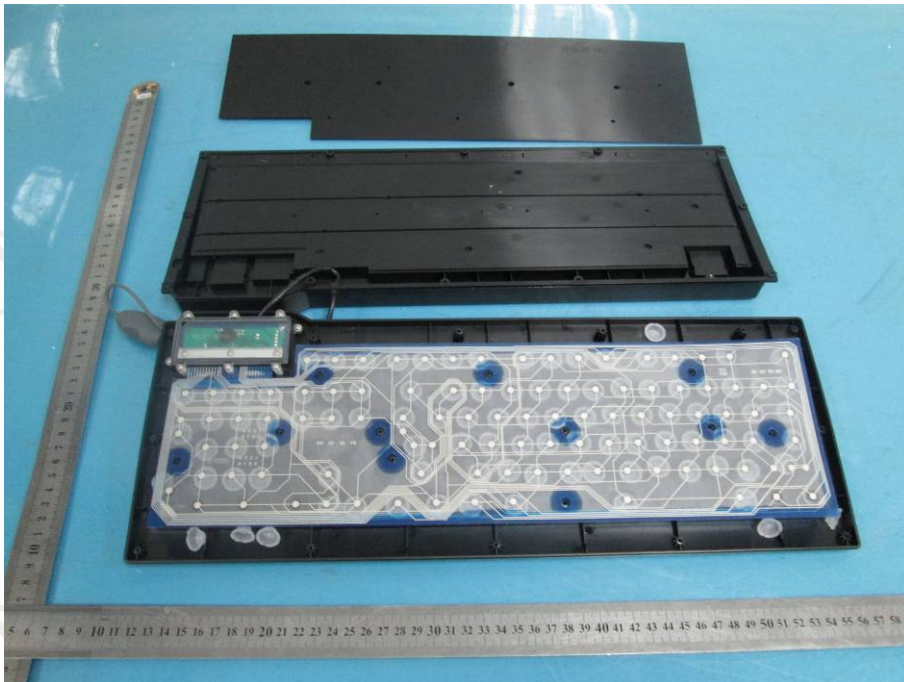


External View of Product-3

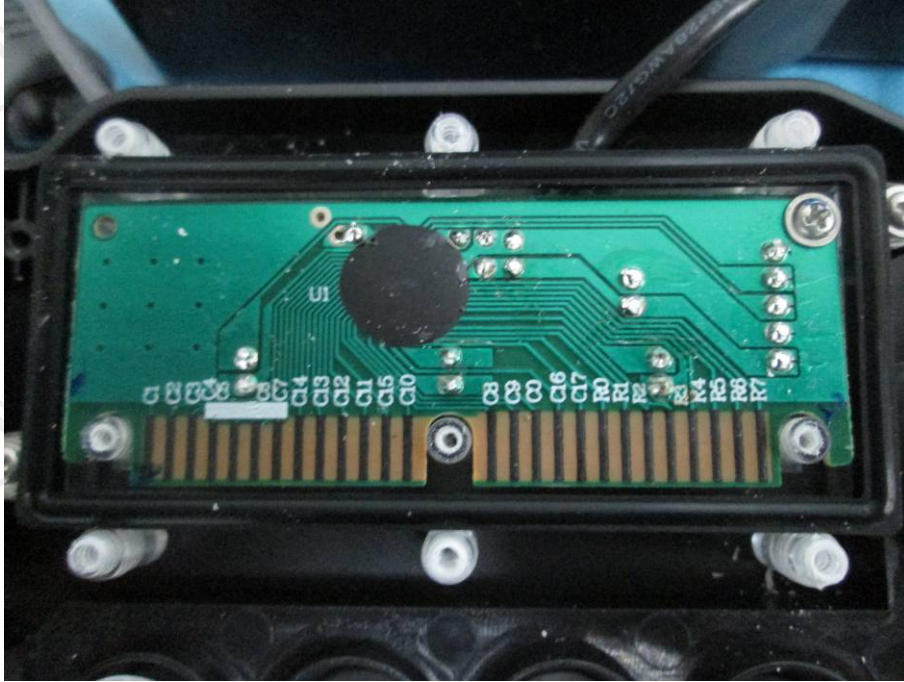
APPENDIX 3 INTERNAL PHOTOGRAPHS OF PRODUCT



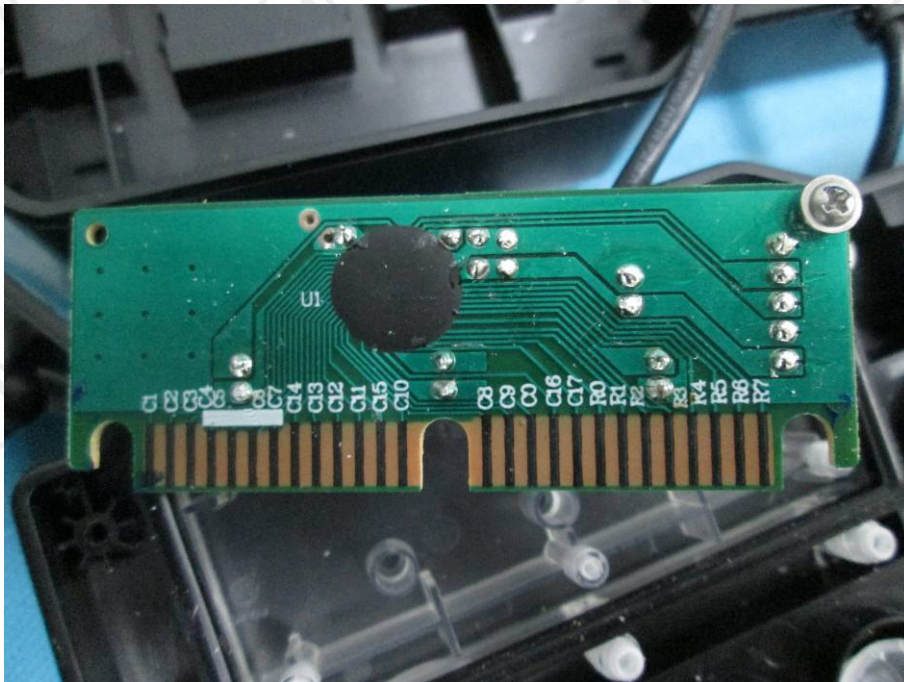
Internal View of Product-1



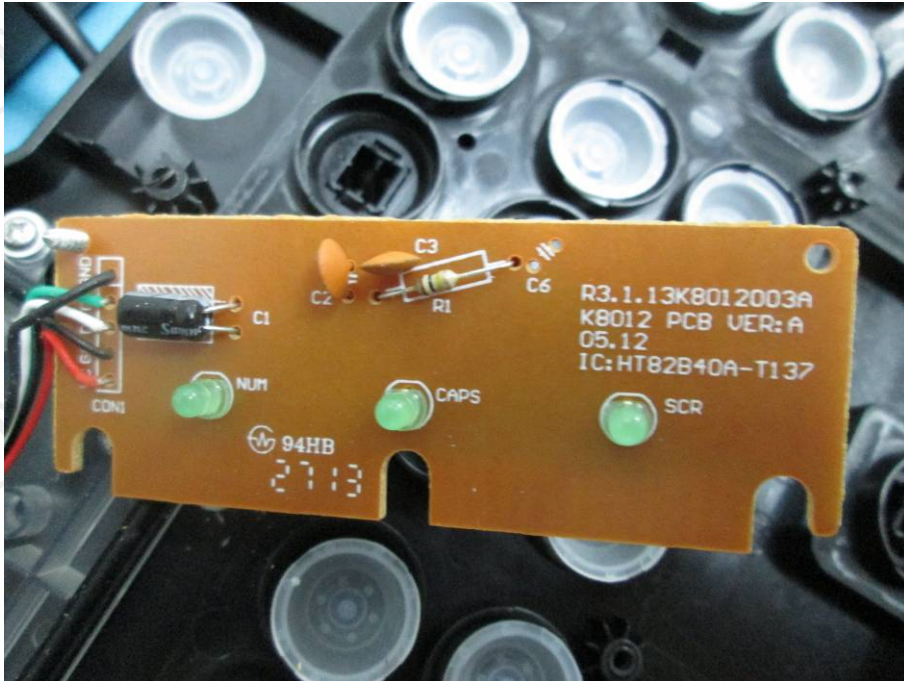
Internal View of Product-2



Internal View of Product-3



Internal View of Product-4



Internal View of Product-5

*** End of Report ***

The test report is effective only with both signature and specialized stamp. The result(s) shown in this report refer only to the sample(s) tested. Without written approval of CTI, this report can't be reproduced except in full.