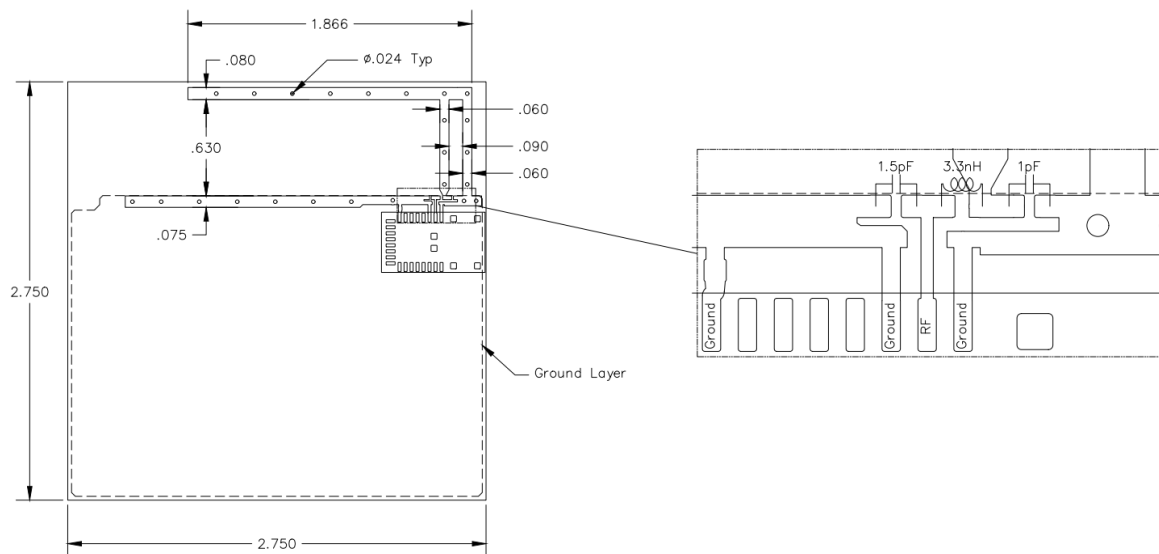


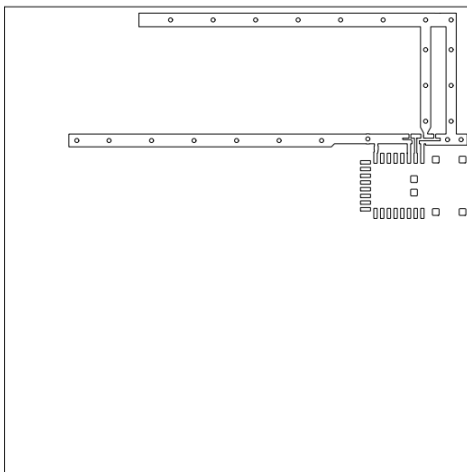
The antenna specification needs to include:

- Physical description (including PCB trace layout in this case)
- Frequency range capability
- Peak gain
- Antenna pattern
- SWR plot (if available)
- Impedance plot (if available)
- S_{11} plot (if available)

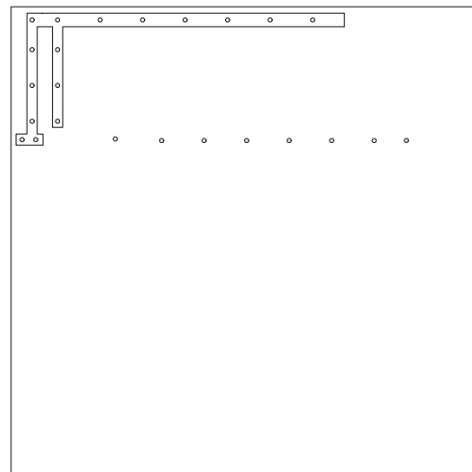
PHYSICAL DESCRIPTION



FRONT VIEW

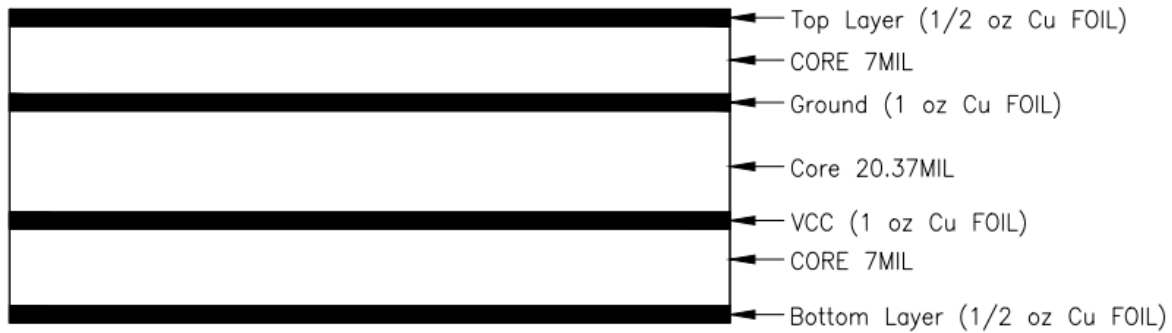


BACK VIEW



REFERENCE STACK UP

BOARD CROSS-SECTION (STACK-UP)
SCALE: NTS
(SOLDER MASK OMITTED FOR CLARITY)



FREQUENCY RANGE CAPABILITY

The antenna has been designed to operate in the 800Mhz to 1000Mhz range

PEAK GAIN

1.3db

ANTENNA PATTERN

