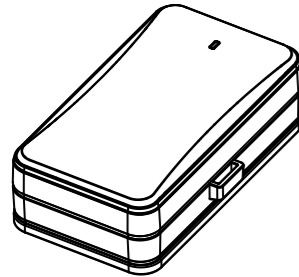


# Asset Tracker with HERE Tracking

(Version 1.0.1)



To get started quickly and use the device correctly, please read this manual first. Changes to the product's appearance, color or accessories may happen without prior notice.

## 1. Overview

### 1.1 Main Functions

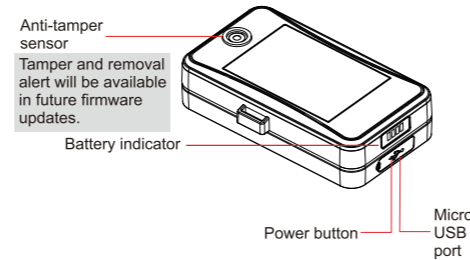
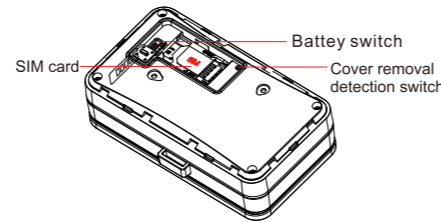
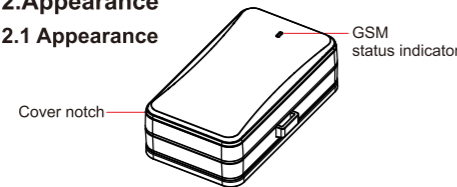
- GPS + Cell + Wi-Fi positioning
- Intelligent power saving
- IPX6 waterproof rating
- Powerful internal magnet
- Fast charging
- 10000mAh battery

### 1.2 Specifications

Frequency	GSM 850/900/1800/1900MHz
Location accuracy	<10 meters
Working voltage/ current	3.7V/ 60mA
Battery	10000mAh/3.7V industrial grade lithium polymer battery
Buzzer	>85dB
Environmental sensor	Humidity 0-100% Temperature -20°C~+70°C Air Pressure 300-1100 hPa
BLE	Nordic 52832
Operating temperature	-20°C— +35°C
Dimension	108(L) x 61(W) x 30(H) mm
Weight	285g

## 2. Appearance

### 2.1 Appearance



### 2.2 What's in the box

HERE Powered Tracker, AC Adapter, Micro USB Cable, Magnetic baseplate, Strip

## 2.3 GSM Indicator

Status	Meaning
Flashes quickly (0.3 seconds)	GSM initialization/ No GSM signal/ No SIM card

## 2.4 Battery indicator

Charging:

Battery	LED 1	LED 2	LED 3	LED 4
0-25%	Flashing	OFF	OFF	OFF
25-50%	ON	Flashing	OFF	OFF
50-75%	ON	ON	Flashing	OFF
75-96%	ON	ON	ON	Flashing
charging completed	ON	ON	ON	ON

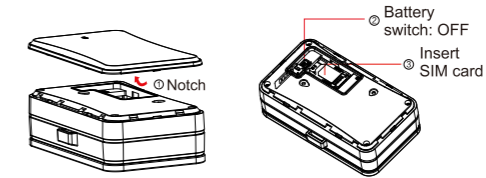
In use:

Battery	LED 1	LED 2	LED 3	LED 4
0	OFF	OFF	OFF	OFF
0-25%	ON	OFF	OFF	OFF
25-50%	ON	ON	OFF	OFF
50-75%	ON	ON	ON	OFF
75-100%	ON	ON	ON	ON

To check the battery status when the tracker is powered on, press the power button. The battery indicator will remain lit for 20 seconds.

## 3. SIM card

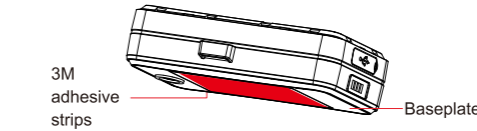
- 1.Remove the cover by pulling up from the notch
- 2.Turn battery switch to OFF
- 3.Insert an unlocked GPRS and SMS-enabled SIM



## 4. Installation

The bottom of the tracker is fitted with a powerful magnet. To place the tracker, remove the base plate and put the tracker directly on a magnetic surface.

To attach the tracker to a clean, non-magnetic surface, attach the baseplate and peel the backing off the included 3M adhesive strips. Then attach the tracker and baseplate to the surface, applying even pressure for at least 30 seconds



## 5. Operation

### 5.1 Adding to HERE Tracking

Download the 'HERE Locate' Android app from the Google Play Store. In the HERE Locate app, register for a HERE account, or sign in. When prompted, scan the QR code on the tracker. The tracker should now be visible in the app and on <https://app.tracking.here.com/> It may take a few minutes for the device to appear on the map.

If you don't have an Android device, go to <http://app.tracking.here.com> and register for a HERE account, or sign in. Once signed in, click 'Add device' in the 'Get started' section of the app. When prompted, enter the 32-digit device ID printed on the Tracker.

### 5.2 Power ON/OFF

Power ON: Press the power button for 3 seconds (ensure the 'battery switch' is set to "ON")

Power OFF: Press the power button for 3 seconds

### 5.3 SMS Commands

#### Set APN

Send your provider's APN to the Tracker via SMS For example, "apn internet.telekom"

#### Restart device

Send an SMS to the Tracker consisting of only the word "reboot".

#### Instant update

To make the Tracker send an instant update, send an SMS consisting of only the word "update": to the Tracker. It will immediately send its location instead waiting through the regular "data-sending interval."

- Please note:
- You need a Premium business plan to use instant update
  - If the data-sending interval is set at longer than 15 min, the device will go into hibernation mode, and instant updates will be delayed

## 6. Warning

You should only use a battery recommended by the manufacturer. The manufacturer assumes no responsibility for any damage caused by using non-original accessories. Maintenance or service arising from the use of any non-original accessories is not under warranty.

Do not bend or open the battery. Do not immerse the battery in liquid or burn the battery. Don't disassemble the device. Operation by unqualified users may damage the device.

## Troubleshooting

If you're having trouble with your device, try these before contacting a service professional:

Problems	Causes	Solutions
Poor signal	The signal waves can't transmit when using the GPS tracker in places that have poor signal reception, such as in tall buildings or a basement.	Use the GPS tracker in places that offer good signal conditions.
Unable to boot	Power switch is off	Switch it on
	Flat battery	Charge battery
	No SIM card	Insert SIM card

Unable to connect to the network	SIM needs a PIN code	Make sure the SIM will work without a PIN code before using.
	SIM card inserted incorrectly	Check SIM card
	There's dirt on the SIM card	Clean SIM card
	Invalid SIM card	Contact network provider
	Not in GSM service area	Move to a GSM service area
Device can't be located	Poor signal	Move to an area with a stronger signal
	SIM has no access to GPRS	Contact network provider to get GPRS service
	APN is not set correctly	Consult the operator for the correct APN and see "Set APN" above

## Warranty instructions and service

1.The warranty is valid only when the warranty card is properly completed and upon presentation of proof of purchase, which consists of the original invoice displaying the date of purchase, the model and the serial number of the product. We reserve the right to refuse warranty service if this information has been removed or changed after the purchase of the product from the dealer.

2.Our obligations are limited to repairs of defects or replacement of defective parts or, at our discretion, replacement of the product.

3.Warranty repairs must be carried out by our Authorized Service Centre. Warranty cover becomes void even if a repair has been attempted by any unauthorized service center.

4.Repair or replacement under the terms of this warranty does not extend or renew the original warranty period.

5.The warranty is not applicable in cases other than defects in material, design or workmanship.

## Maintenance Record

Date	Serviced by
Product Model	
IMEI Number	
Fault Descriptions	
Comments	

## FCC RF Exposure Information and Statement

This device meets the government's requirements for exposure to radio waves. The guidelines are based on standards that were developed by independent scientific organizations through periodic and thorough evaluation of scientific studies. The standards include a substantial safety margin designed to assure the safety of all persons regardless of age or health. The SAR limit of USA (FCC) is 1.6 W/kg averaged. Device types: Asset GPS Tracker (FCC ID: X71-AT4H) has also been tested against this SAR limit. SAR information on this and other pad can be viewed on-line at <http://www.fcc.gov/oet/ea/fccid/>. Please use the device FCC ID number for search. This device was tested simulation typical 10mm body.. To maintain compliance with FCC RF exposure requirements, use accessories should maintain a separation distance between the user's bodies mentioned above.

## FCC Warning

This device complies with Part 15 of the FCC Rules. Operation is subject to the following two conditions: (1) This device may not cause harmful interference, and (2) This device must accept any interference received, including interference that may cause undesired operation.

NOTE 1: This equipment has been tested and found to comply with the limits for a Class B digital device, pursuant to part 15 of the FCC Rules. These limits are designed to provide reasonable protection against harmful interference in a residential installation. This equipment generates, uses and can radiate radio frequency energy and, if not installed and used in accordance with the instructions, may cause harmful interference to radio communications. However, there is no guarantee that interference will not occur in a particular installation. If this equipment does cause harmful interference to radio or television reception, which

can be determined by turning the equipment off and on, the user is encouraged to try to correct the interference by one or more of the following measures:

- Reorient or relocate the receiving antenna.
- Increase the separation between the equipment and receiver.
- Connect the equipment into an outlet on a circuit different from that to which the receiver is connected.
- Consult the dealer or an experienced radio/TV technician for help.

NOTE 2: Any changes or modifications to this unit not expressly approved by the party responsible for compliance could void the user's authority to operate the equipment.

Caution:  
Use the Product in the environment with the temperature Between -20°C and 35°C; Otherwise, it may damage your product. Products can only be used below 2000m altitude For the following equipment:  
Product Name: Asset GPS Tracker  
Model: AT4H Brand Name: CONCOX  
Shenzhen Concox Information Technology Co., Ltd  
E-mail: gaoxingxin@concox.cn  
hereby declares that this [Name: Asset GPS Tracker, Model: AT4H] is in compliance with the essential requirements and other relevant provisions of Directive 2014/53/EU.



The full text of the EU declaration of conformity is available at the internet address: <http://www.iconcox.com/AT4H.pdf>  
The product shall only be connected to a USB interface of version USB2.0 and that the connection to a power USB is allowed.

## CAUTION RISK OF EXPLOSION IF BATTERY IS REPLACED BY AN INCORRECT TYPE. DISPOSE OF USED BATTERIES ACCORDING TO THE INSTRUCTIONS

Adapter Model:HJ-0502000N1-EU  
Input: AC 100-240V, 50/60Hz, 0.3A; Output: DC5V, 2000mA

This product is intended for sale and application in a business environment.

RED Article 10 2

-This product can be used across EU member states  
RED Article 10 10

-The product is class 1 product, No restrictions  
The RF distance between body and product is 5mm

Support Bands:GSM900, DCS1800, GSM850, PCS1900  
Frequency Range:  
GSM900: Tx:880-915MHz, Rx:925-960MHz  
DCS1800: Tx:1710-1785MHz, Rx:1805-1880MHz  
GSM850: Tx:824-849MHz, Rx:869-894MHz  
PCS1900: Tx:1850-1910MHz, Rx:1805-1880MHz  
RF Output Power:GSM900: 33.1dBm, GSM1800: 30.86dBm

Wi-Fi (2.4G) (Receiver Only)  
Frequency Range: 2412-2472MHz for 802.11b/g/n(HT20);  
2422-2462MHz for 802.11n(HT40)

Bluetooth Version:V5.0 (Only BLE)  
Frequency Range:2402-2480MHz  
Max.RF Output Power:-0.85dBm(EIRP)

GPS  
Frequency Range:1575.42MHz