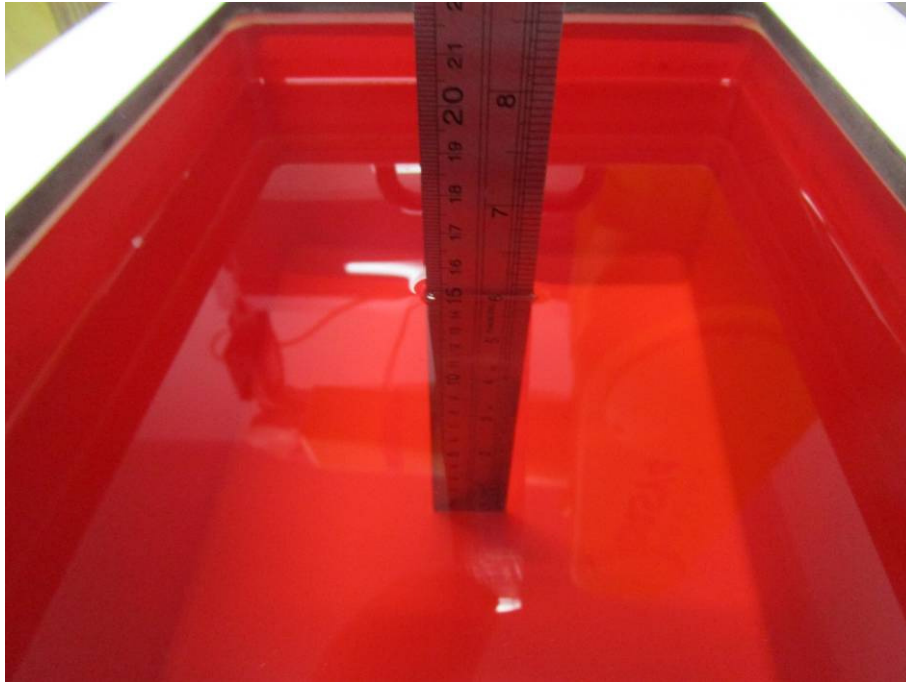


APPENDIX B EUT TEST POSITION PHOTOS

Liquid depth $\geq 15\text{cm}$



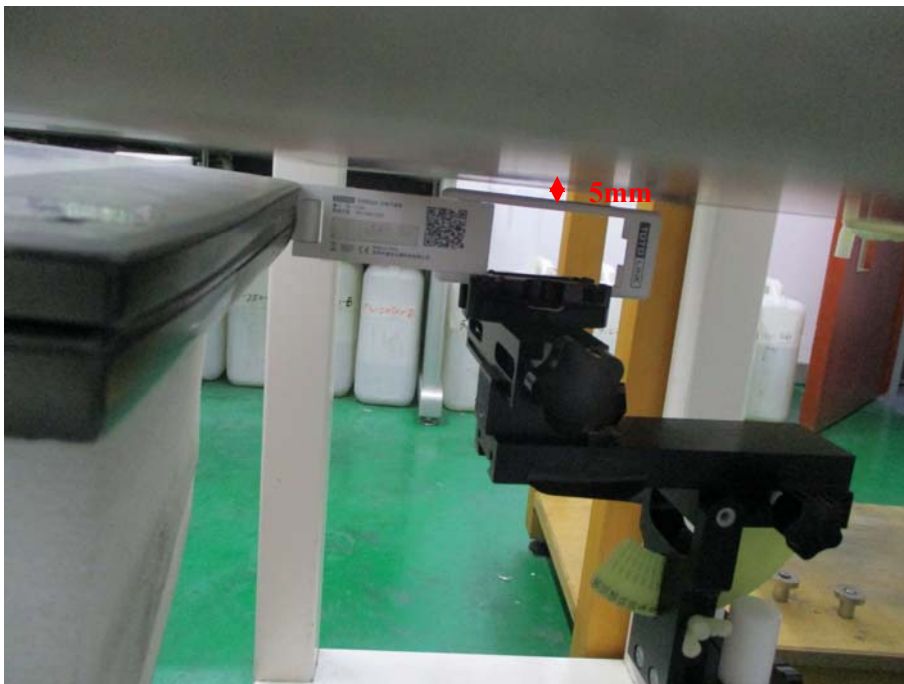
Test Position_Body Back (5mm)



Test Position_Body Left (5mm)



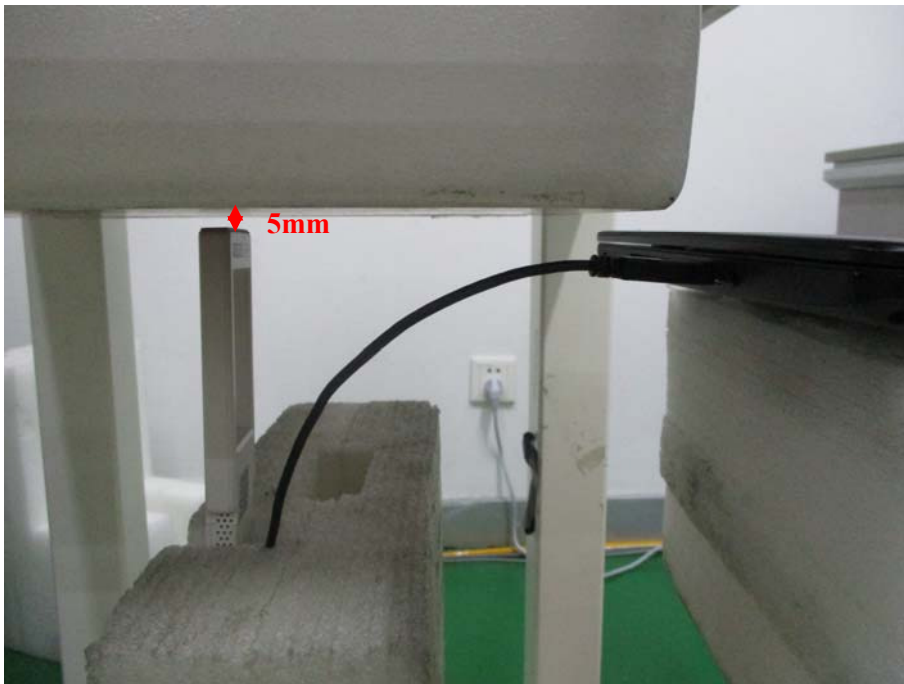
Test Position_Body Right (5mm)



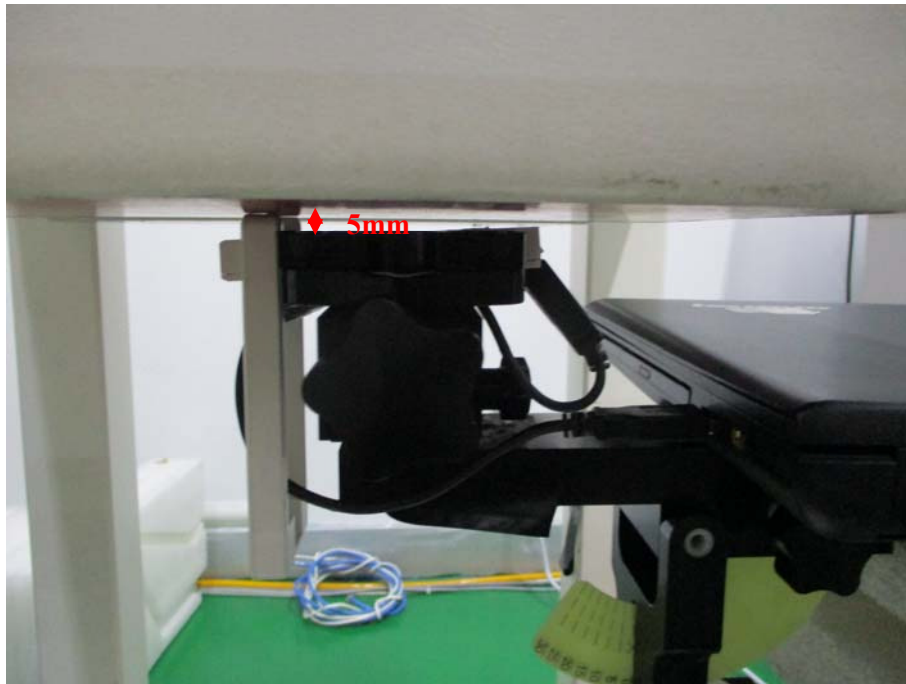
Test Position_ Body Front (5mm)



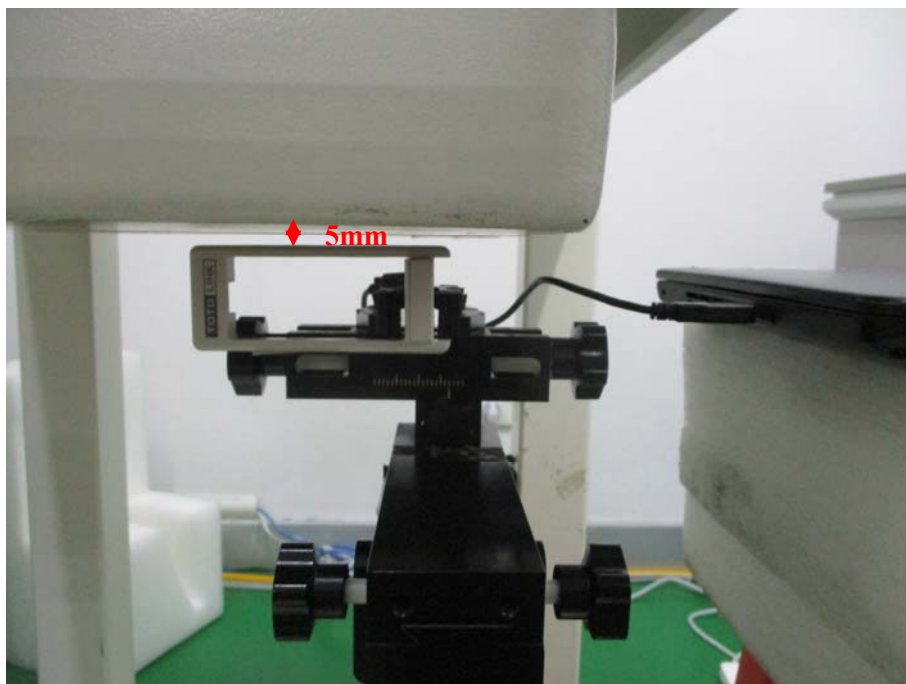
Test Position_ Body Top (5mm)



Test Position_Body Back (5mm) Antenna Fold



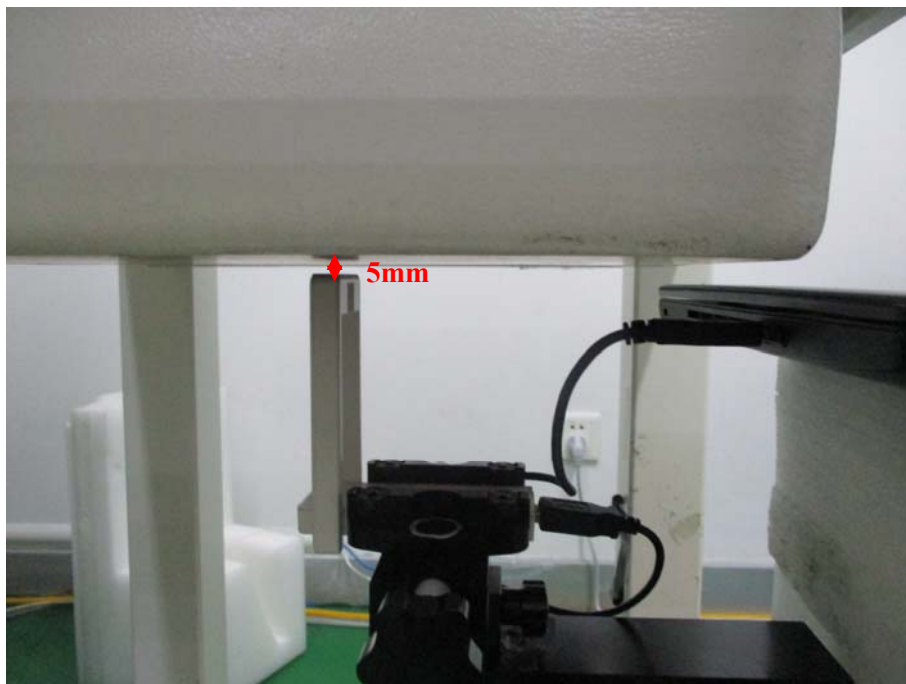
Test Position_Body Left (5mm) Antenna Fold



Test Position_ Body Right (5mm) Antenna Fold



Test Position_ Body Front (5mm) Antenna Fold



Test Position_ Body Top (5mm) Antenna Fold



Test Position_ Body Bottom(5mm) Antenna Fold

